

**UNDERSEA FEATURE NAME PROPOSAL**

(Sea NOTE overleaf)

Note: The boxes will expand as you fill the form.

<b>Name Proposed:</b>	Suoli Guyot	<b>Ocean or Sea:</b>	Central Pacific Ocean
-----------------------	-------------	----------------------	-----------------------

Geometry that best defines the feature (Yes/No) :						
Point	Line	Polygon	Multiple points	Multiple lines*	Multiple polygons*	Combination of geometries*
		Yes				

\* Geometry should be clearly distinguished when providing the coordinates below.

	Lat. (e.g. 63°32.6'N)	Long. (e.g. 046°21.3'W)
<b>Coordinates:</b>	18°42.6'N (summit)	178°42.5'W (summit)
	18°44.1'N (bottom)	178°54.1'W (bottom)
	18°49.5'N	178°51.2'W
	18°50.9'N	178°45.3'W
	18°50.2'N	178°39.4'W
	18°51.9'N	178°37.1'W
	18°50.9'N	178°32.7'W
	18°48.3'N	178°30.3'W
	18°43.8'N	178°31.7'W
	18°40.7'N	178°30.5'W
	18°38.4'N	178°35.0'W
	18°35.7'N	178°35.9'W
	18°34.7'N	178°38.7'W
	18°38.0'N	178°48.4'W
18°40.9'N	178°52.7'W	
18°44.1'N	178°54.1'W	

<b>Feature Description:</b>	Maximum Depth:	4400 m	Steepness :	
	Minimum Depth :	1600 m	Shape :	

Total Relief :	2800 m	Dimension/Size :	35 km × 38 km
----------------	--------	------------------	---------------

<b>Associated Features:</b>	This guyot has a flat top and steep hillsides and extends from east to west.
-----------------------------	--

<b>Chart/Map References:</b>	Shown Named on Map/Chart:	
	Shown Unnamed on Map/Chart:	GEBCO 5.07
	Within Area of Map/Chart:	

<b>Reason for Choice of Name</b> (if a person, state how associated with the feature to be named):	Suoli comes from a poem named Wu Yang in SHI JING • XIAO YA (SHI JING is a collection of ancient Chinese poems). This poem describes the lively hunting life with prosperous cattle and sheep spreading over the hills and ponds. The shepherd wearing straw rain cape and bamboo hat gently waves his whip and the cattle and sheep jump onto the top of the hill. The shepherd dreams locusts turning into fish and flags with eagles. A seer tells him that the dream forebodes a great harvest the next year. This region has many seamounts such as the Weiyu Seamount, we use six words Suoli, Chunyang, Nianfeng, Echi, Huigong and Mulai in the poem Wu Yang to name the six seamounts clockwise located in this region to represent the dense seamounts in this region which are just like the flock of cattle and sheep. This seamount is named Suoli which means the straw rain cape and bamboo hat worn by the shepherd.
--	--

<b>Discovery Facts:</b>	Discovery Date:	Nov. 1998
	Discoverer (Individual, Ship):	R/V Dayang Yihao

<b>Supporting Survey Data, including Track Controls:</b>	Date of Survey:	Nov. 1998
	Survey Ship:	R/V Dayang Yihao
	Sounding Equipment:	Multi-beam sounding system (Seabeam2112.360)
	Type of Navigation:	Sercel NR51 DGPS
	Estimated Horizontal Accuracy (nm):	<=0.08nm
	Survey Track Spacing:	5nm
	Supporting material can be submitted as Annex in analog or digital form.	

<b>Proposer(s):</b>	Name(s):	Haiwen Zhang
	Date:	14 May 2014
	E-mail:	heyunxu@sina.com
	Organization and Address:	Sub Committee on Undersea Feature Names of China Committee on Geographical Names No.1 Fuxingmenwai Ave. Beijing

<b>Remarks:</b>	
-----------------	--

# Attachment

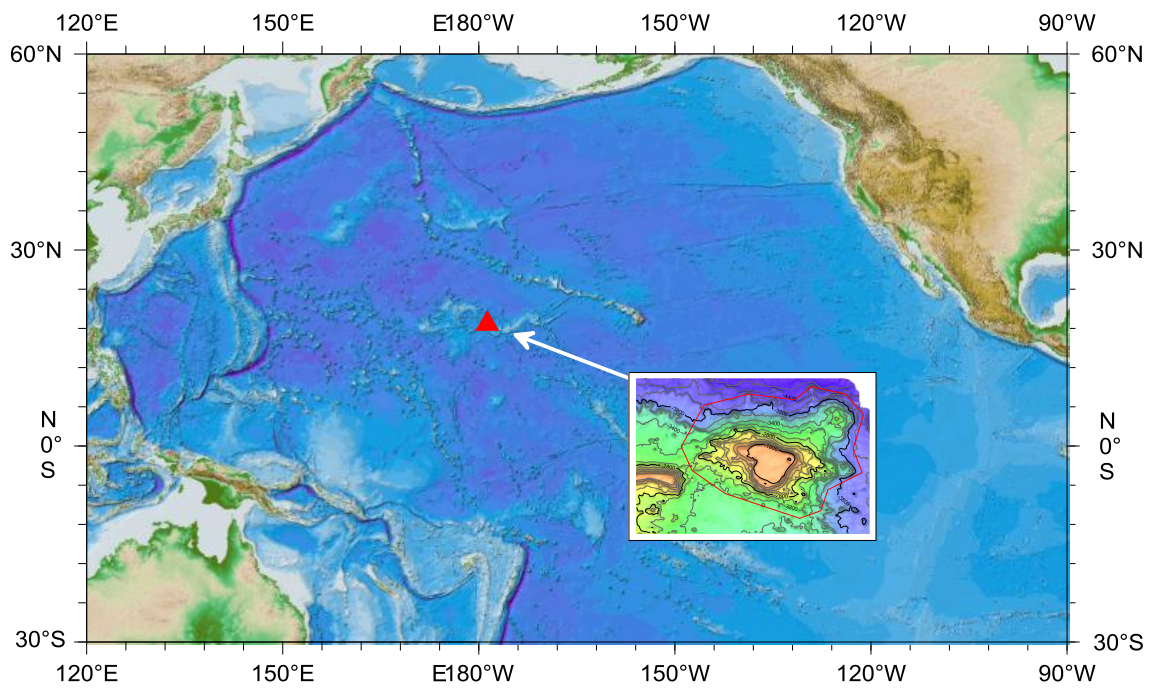


Fig.1 Index map showing the location of the Suoli Guyot

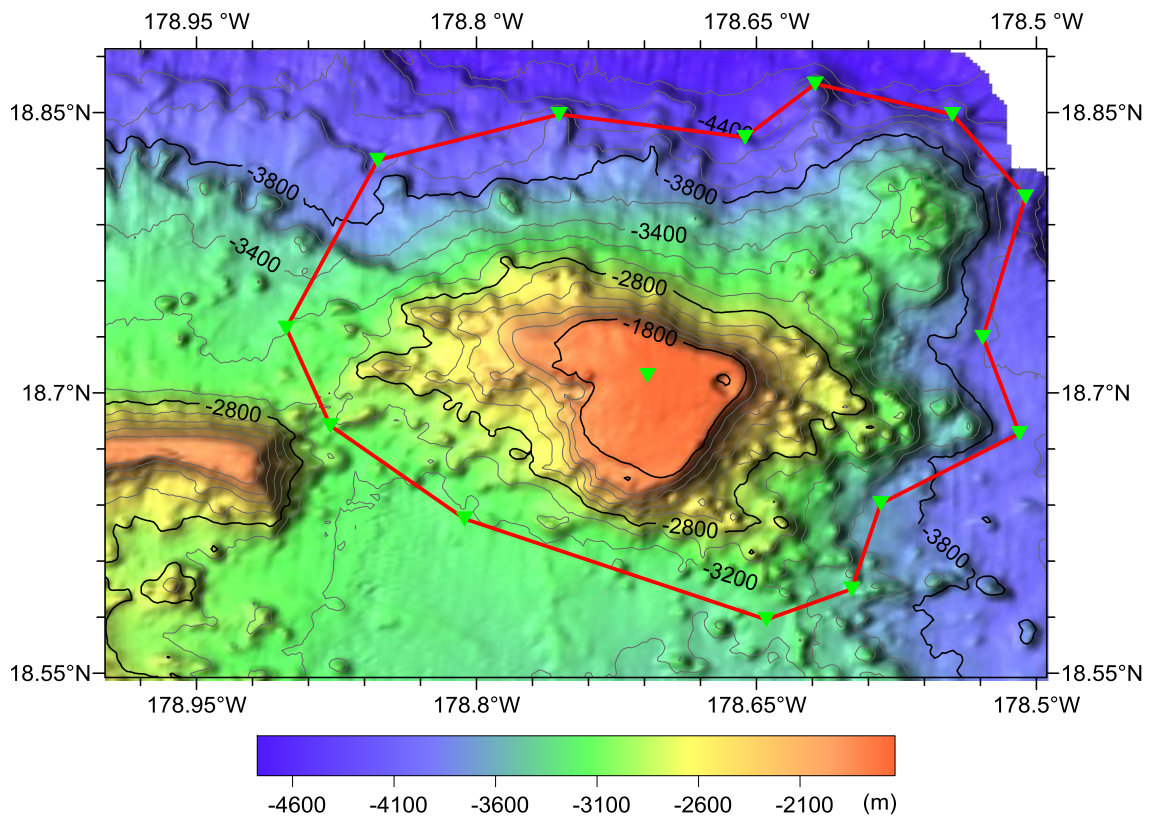


Fig.2 Bathymetric map of the Suoli Guyot(Contours are in 200 m)

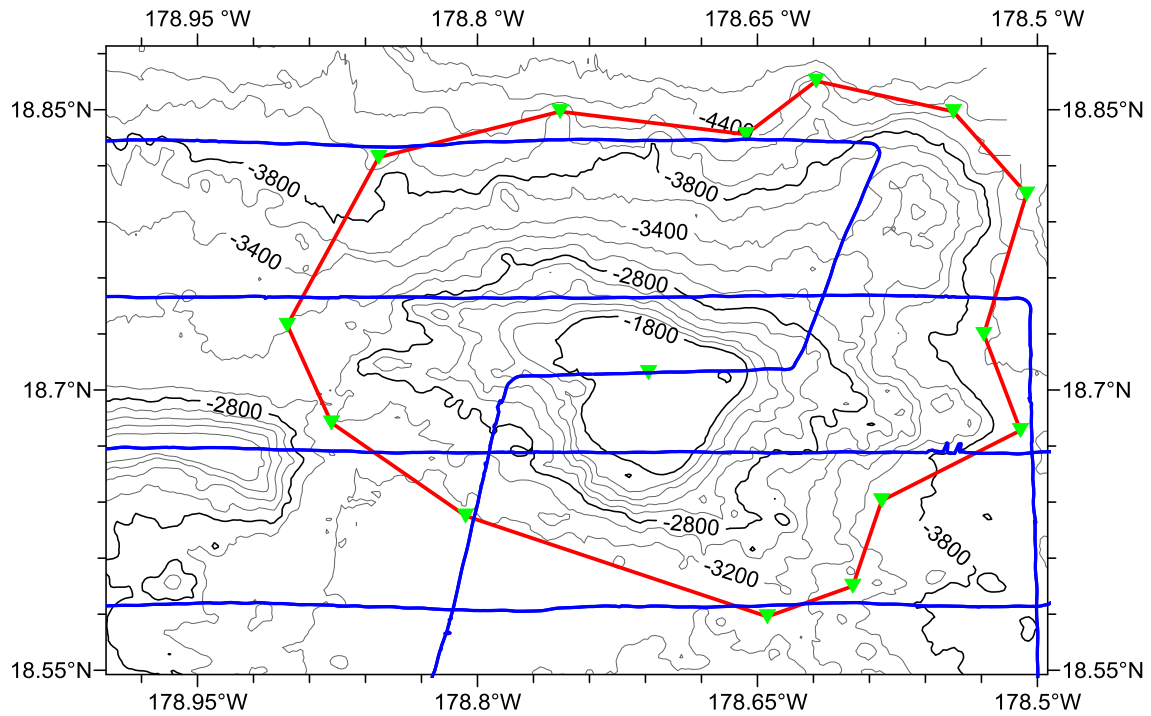


Fig.3 Bathymetric map of the Suoli Guyot, showing track lines.  
(Contours are in 200 m, blue lines for the track lines)

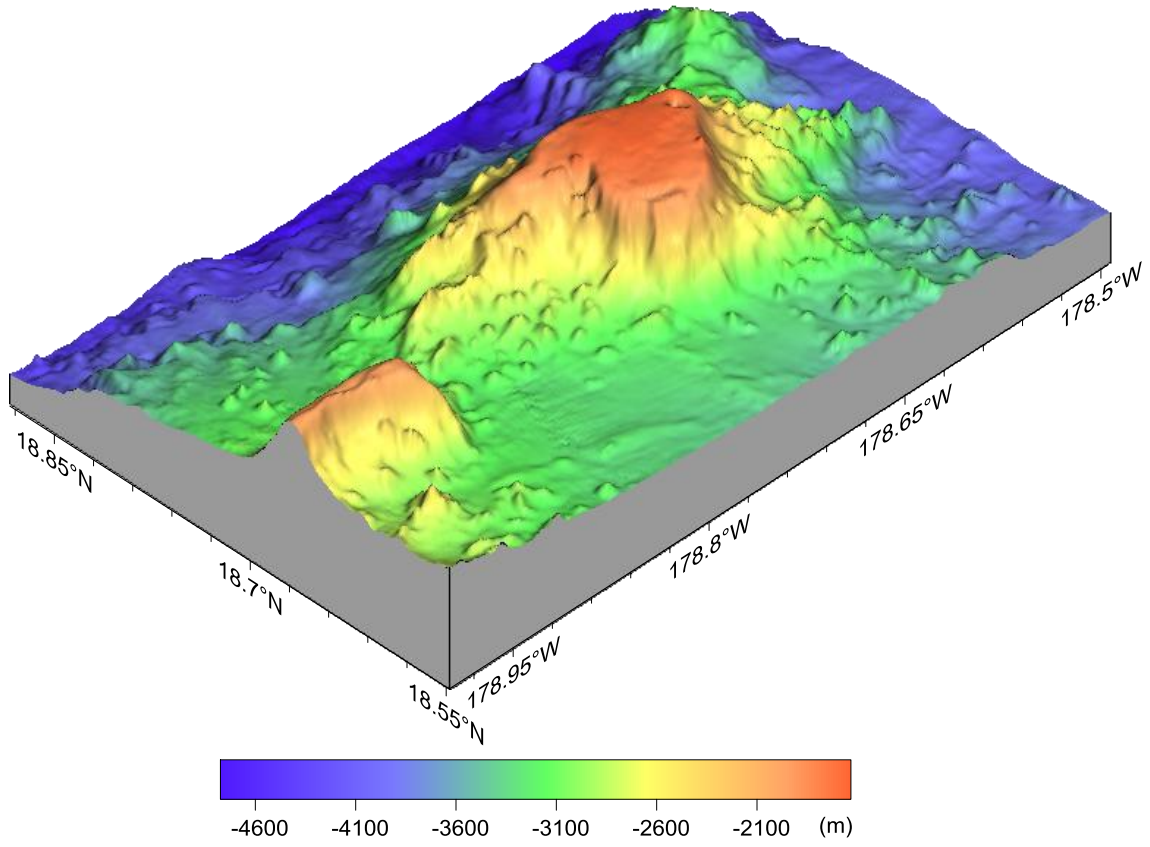


Fig.4 3-D bathymetric map of the Suoli Guyot.

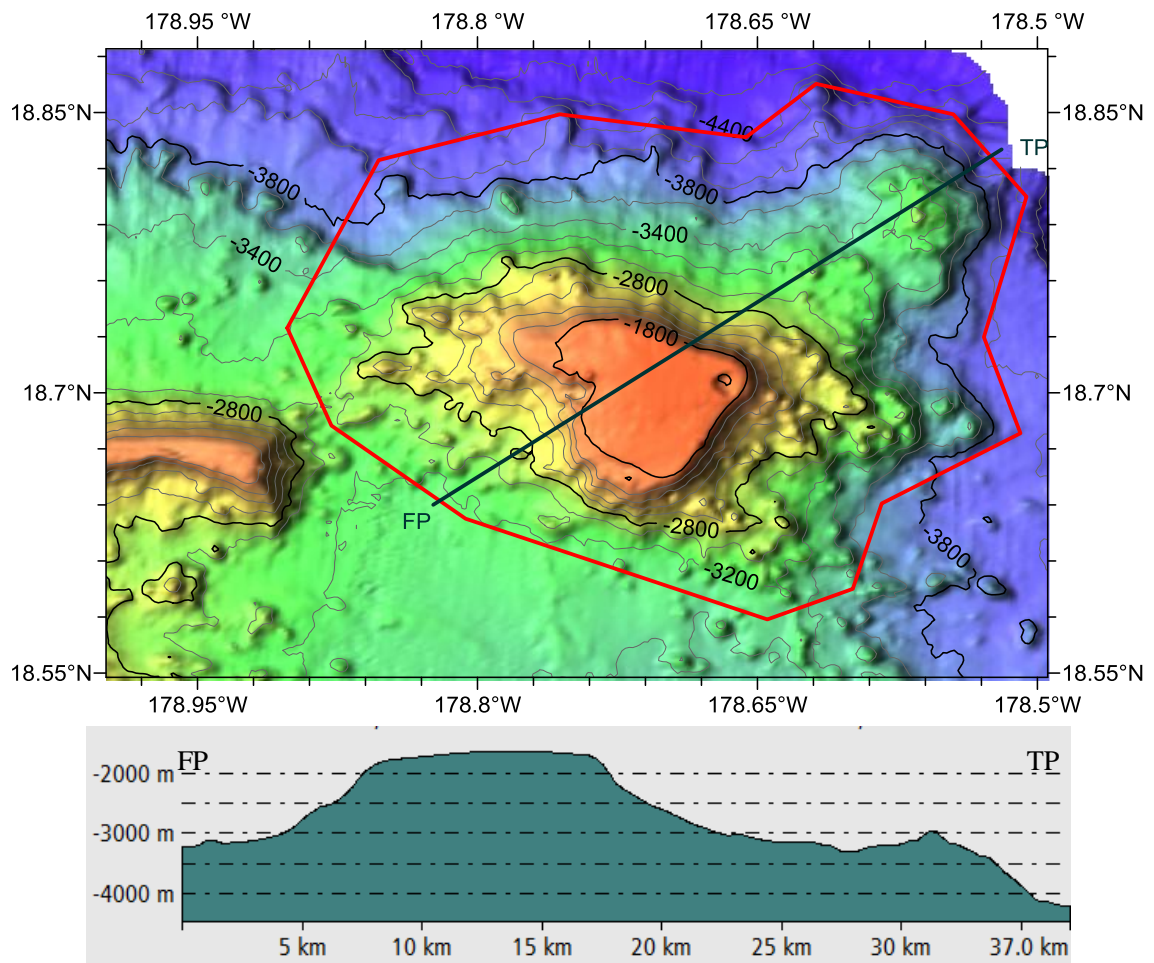


Fig.5 Profile map of the Suoli Guyot.