

**INTERNATIONAL HYDROGRAPHIC  
ORGANIZATION**

**INTERGOVERNMENTAL  
OCEANOGRAPHIC  
COMMISSION (of UNESCO)**

**UNDERSEA FEATURE NAME PROPOSAL**

(Sea NOTE overleaf)

Note: The boxes will expand as you fill the form.

<b>Name Proposed:</b>	Mulai Guyot	<b>Ocean or Sea:</b>	Central Pacific Ocean
-----------------------	-------------	----------------------	-----------------------

<b>Geometry that best defines the feature (Yes/No) :</b>						
Point	Line	Polygon	Multiple points	Multiple lines*	Multiple polygons*	Combination of geometries*
		Yes				

\* Geometry should be clearly distinguished when providing the coordinates below.

	Lat. (e.g. 63°32.6'N)	Long. (e.g. 046°21.3'W)
<b>Coordinates:</b>	18°49.8'N (summit)	179°16.8'W (summit)
	18°50.0'N (bottom)	179°22.5'W (bottom)
	18°47.3'N	179°25.1'W
	18°45.9'N	179°24.1'W
	18°46.3'N	179°21.3'W
	18°43.3'N	179°13.7'W
	18°43.8'N	179°12.6'W
	18°49.0'N	179°11.9'W
	18°52.4'N	179°12.6'W
	18°54.0'N	179°16.1'W
	18°53.4'N	179°19.9'W
	18°49.6'N	179°24.4'W

<b>Feature Description:</b>	Maximum Depth:	3700m	Steepness :	
	Minimum Depth :	1600m	Shape :	
	Total Relief :	2100m	Dimension/Size :	21km×24km

<b>Associated Features:</b>	This guyot's peak is flat and the hillside is steep. The shape of this guyot is like a truncated cone.
-----------------------------	--

<b>Chart/Map References:</b>	Shown Named on Map/Chart:	
	Shown Unnamed on Map/Chart:	GEBCO 5.07
	Within Area of Map/Chart:	

<b>Reason for Choice of Name</b> (if a person, state how associated with the feature to be named):	Mulai comes from a poem named Wu Yang in SHI JING XIAO YA (Shi Jing is a collection of ancient Chinese poems). This poem describes the lively hunting life with prosperous cattle and sheep spreading over the hills and ponds. The shepherd wearing straw rain cape and bamboo hat gently waves his whip and the cattle and sheep jump onto the top of the hill. The shepherd dreams locusts turning into fish and flags with eagles. A seer tells him that the dream forebodes a great harvest the next year. This region has many seamounts such as the Wei Yu Seamount, we use six words Suoli, Chunyang, Nianfeng, Echi, Huigong and Mulai in the poem Wu Yang to name the six seamounts clockwise located in this region to represent the dense seamounts in this region which are just like the flock of cattle and sheep. The seamount is named Mulai representing the shepherd grazing in the wild.
--	--

<b>Discovery Facts:</b>	Discovery Date:	Nov. 1998
	Discoverer (Individual, Ship):	R/V Dayang Yihao

<b>Supporting Survey Data, including Track Controls:</b>	Date of Survey:	Nov. 1998
	Survey Ship:	R/V Dayang Yihao
	Sounding Equipment:	Multi-beam sounding system (Seabeam2112.360)
	Type of Navigation:	Sercel NR51 DGPS
	Estimated Horizontal Accuracy (nm):	<=0.08nm
	Survey Track Spacing:	5nm
Supporting material can be submitted as Annex in analog or digital form.		

<b>Proposer(s):</b>	Name(s):	Haiwen Zhang
	Date:	14 May 2014
	E-mail:	heyunxu@sina.com
	Organization and Address:	Sub Committee on Undersea Feature Names of China Committee on Geographical Names No.1 Fuxingmenwai Ave. Beijing

<b>Remarks:</b>	
-----------------	--

**Attachments:**

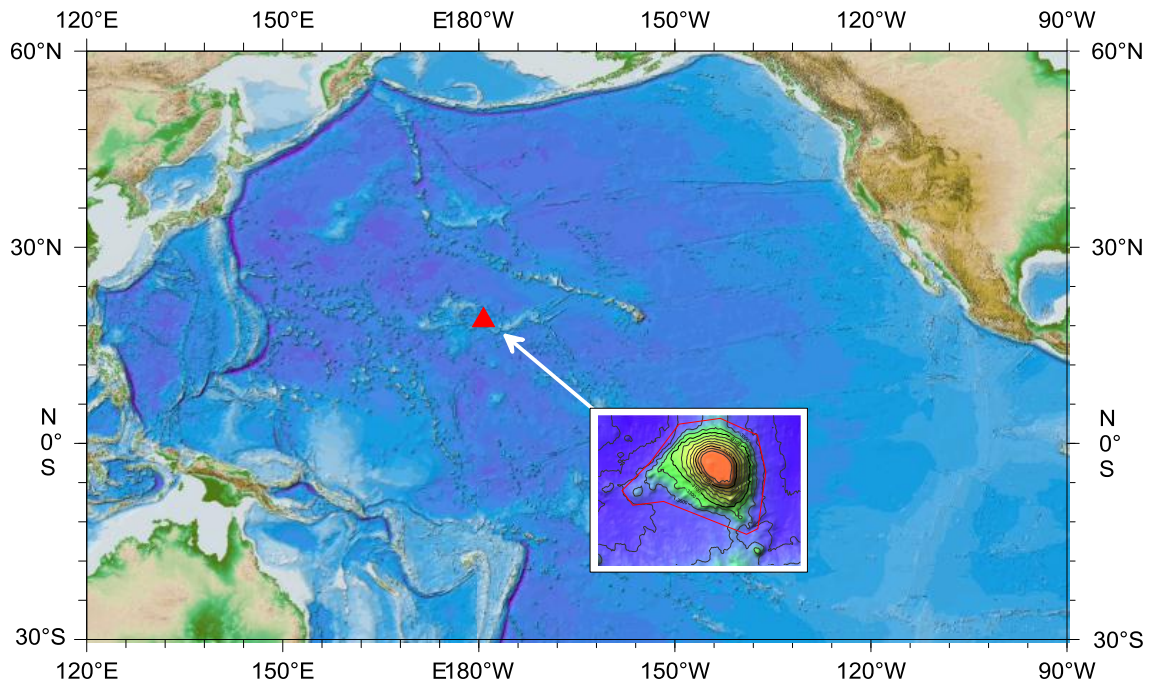


Fig.1 Index map showing the location of the Mulai Guyot.

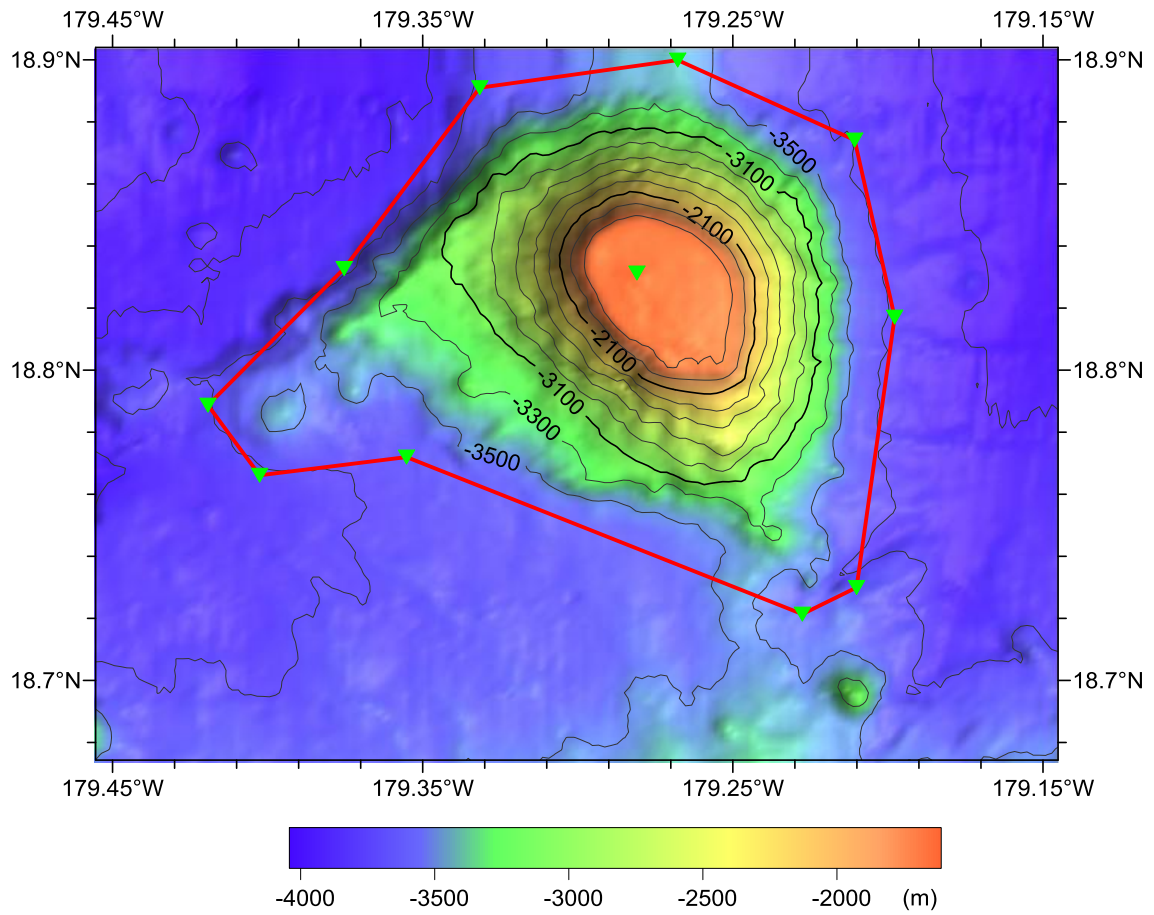


Fig.2 Bathymetric map of the Mulai Guyot. (Contours are in 200 m)

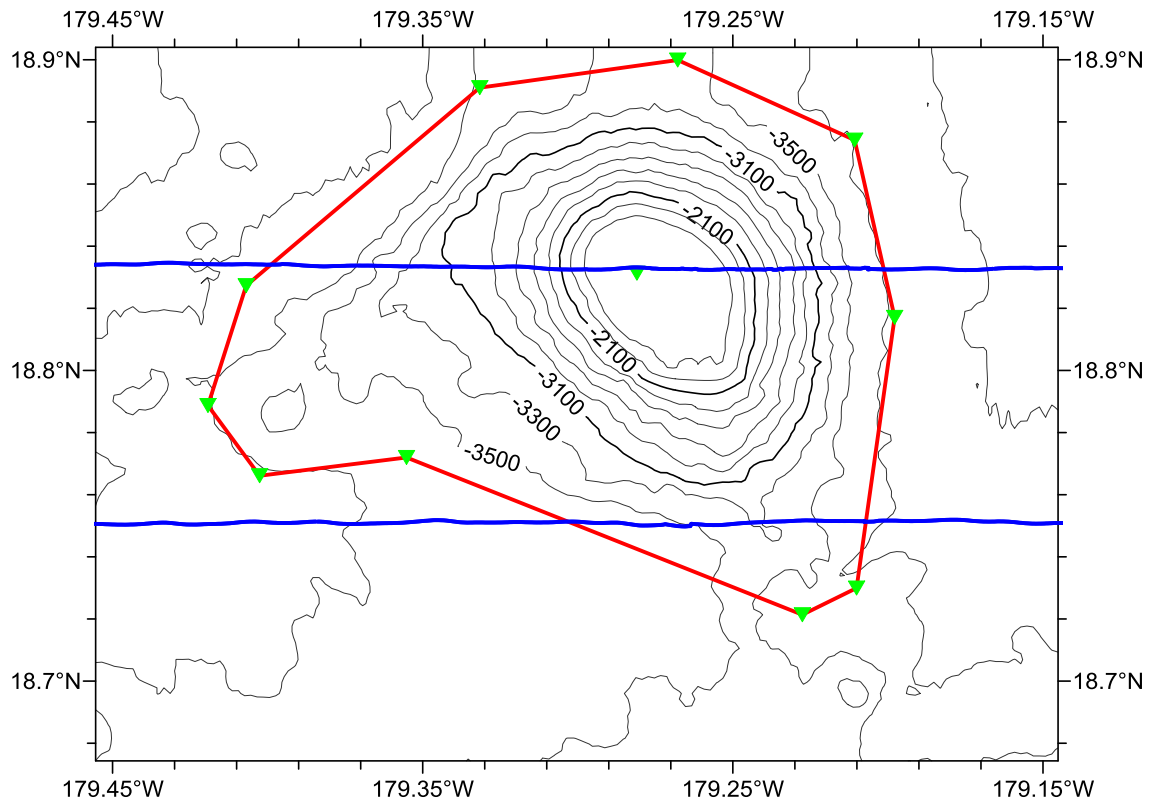


Fig.3 Bathymetric map of the Mulai Guyot, showing track lines.  
(Contours are in 200 m. Blue lines for the track lines.)

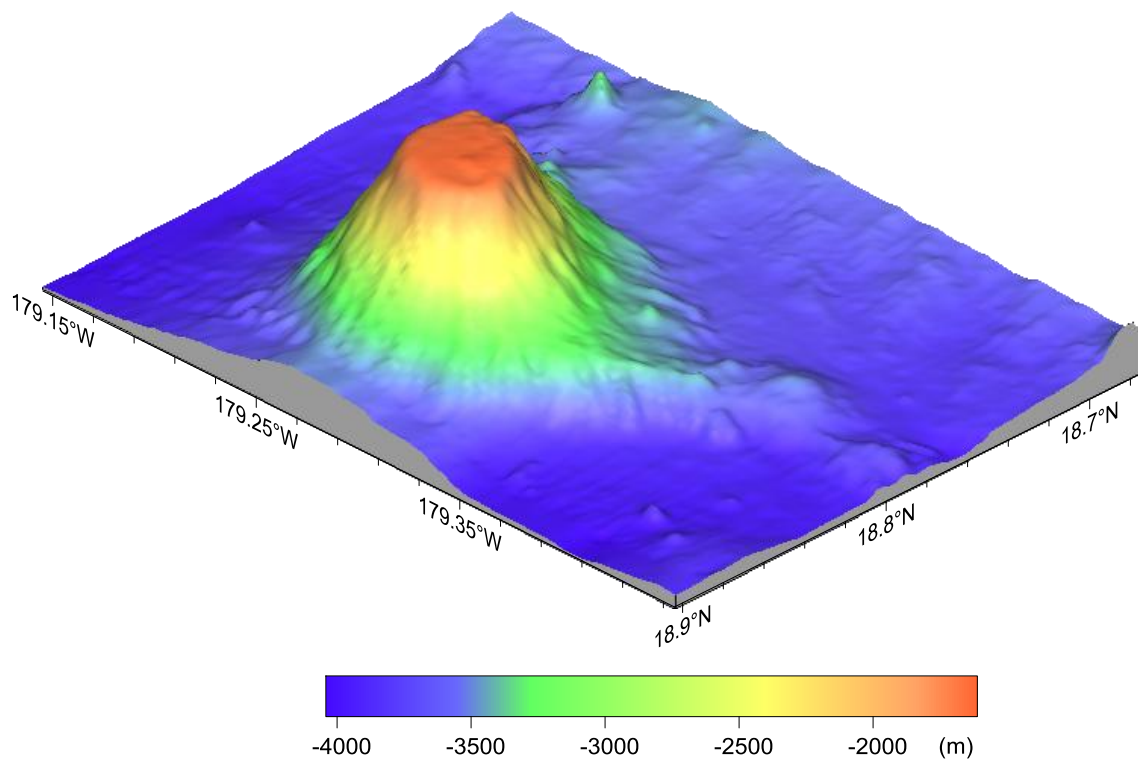


Fig.4 3-D bathymetric map of the Mulai Guyot.

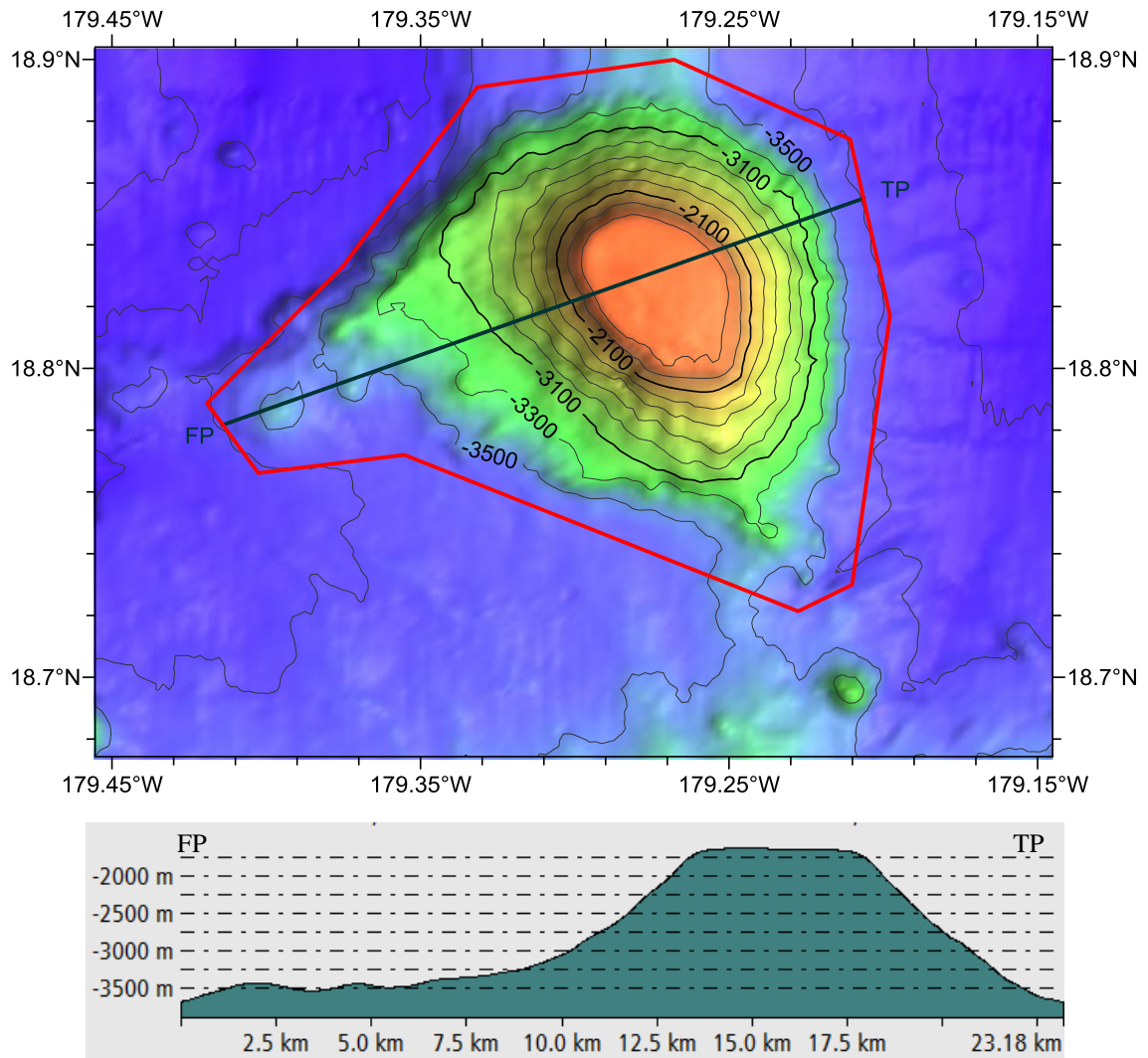


Fig.5 Profile map of the Mulai Guyot.