

**INTERNATIONAL HYDROGRAPHIC  
ORGANIZATION**

**INTERGOVERNMENTAL  
OCEANOGRAPHIC  
COMMISSION (of UNESCO)**

**UNDERSEA FEATURE NAME PROPOSAL**

(Sea NOTE overleaf)

Note: The boxes will expand as you fill the form.

<b>Name Proposed:</b>	Tiancheng Seamount	<b>Ocean or Sea:</b>	Southwest Indian Ocean
-----------------------	--------------------	----------------------	------------------------

<b>Geometry that best defines the feature (Yes/No) :</b>						
Point	Line	Polygon	Multiple points	Multiple lines*	Multiple polygons*	Combination of geometries*
		Yes				

\* Geometry should be clearly distinguished when providing the coordinates below.

	Lat. (e.g. 63°32.6'N)	Long. (e.g. 046°21.3'W)
<b>Coordinates:</b>	27°54.5'S (summit)	063°53.7'E (summit)
	27°44.7'S (bottom)	063°51.5'E (bottom)
	27°44.4'S	063°57.5'E
	27°44.9'S	064°02.0'E
	27°46.7'S	063°58.6'E
	27°48.6'S	063°59.8'E
	27°50.2'S	064°03.9'E
	27°51.9'S	064°04.4'E
	27°52.5'S	064°01.2'E
	27°53.7'S	064°01.1'E
	27°54.5'S	064°03.7'E
	27°55.5'S	063°58.5'E
	27°57.3'S	064°01.4'E
	27°58.3'S	063°54.4'E
	27°59.7'S	063°52.1'E
	27°59.0'S	063°42.4'E
	27°57.7'S	063°42.9'E
27°56.3'S	063°46.5'E	
27°51.8'S	063°48.2'E	
27°51.8'S	063°45.4'E	
27°48.9'S	063°46.6'E	
27°48.2'S	063°43.5'E	
27°44.7'S	063°51.5'E	

<b>Feature</b>	<b>Maximum Depth:</b>	4500m	<b>Steepness :</b>	
----------------	-----------------------	-------	--------------------	--

<b>Description:</b>	Minimum Depth :	2300m	Shape :	
	Total Relief :	2200m	Dimension/Size :	25km×26km

<b>Associated Features:</b>	This seamount is located in the middle of Southeast India Ocean . It extends from south to north. There are three sea peaks on the top of this seamount.
-----------------------------	--

<b>Chart/Map References:</b>	Shown Named on Map/Chart:	
	Shown Unnamed on Map/Chart:	GEBCO 5.09
	Within Area of Map/Chart:	

<b>Reason for Choice of Name</b> (if a person, state how associated with the feature to be named):	Tiancheng is from a poem in “Shi Jing Zhou Song” (an ancient book of poems). "The heaven issued lofty orders; Lord Wen and Wu received the orders" which means King Wen and King Wu accept their destiny and govern their country well. The seamount named "Tiancheng" means that ancient Chinese people cherish peace and stability.
--	---

<b>Discovery Facts:</b>	Discovery Date:	Feb. 2009
	Discoverer (Individual, Ship):	R/V Dayang Yihao

<b>Supporting Survey Data, including Track Controls:</b>	Date of Survey:	Feb. 2009
	Survey Ship:	R/V Dayang Yihao
	Sounding Equipment:	EM120 multi-beam sounding system
	Type of Navigation:	StarFire-2050M WAD DGPS
	Estimated Horizontal Accuracy (nm):	<=0.0054nm
	Survey Track Spacing:	3nm
	Supporting material can be submitted as Annex in analog or digital form.	

<b>Proposer(s):</b>	Name(s):	Haiwen Zhang
	Date:	14 May 2014
	E-mail:	heyunxu@sina.com
	Organization and Address:	Sub Committee on Undersea Feature Names of China Committee on Geographical Names No.1 Fuxingmenwai Ave. Beijing

Remarks:

Attachments:

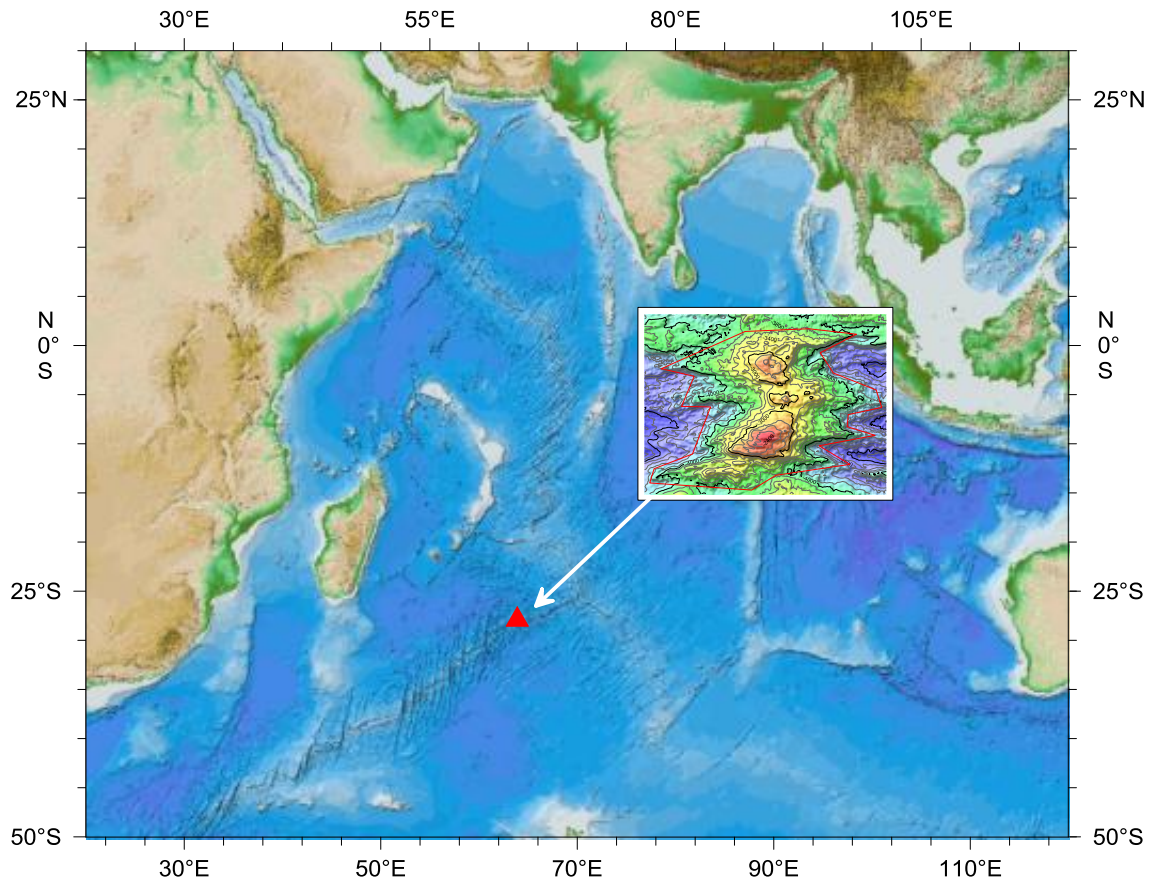


Fig.1 Index map showing the location of the Tiancheng Seamount.

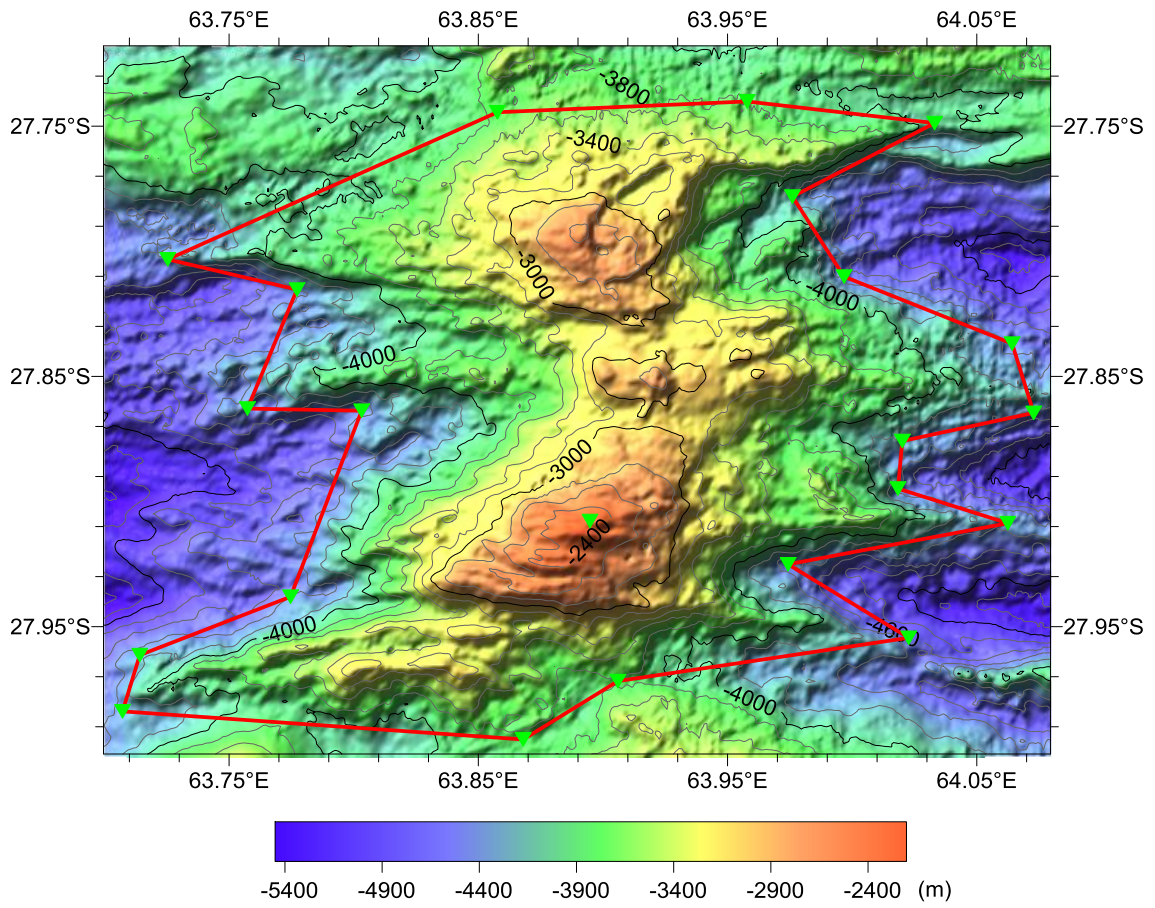


Fig.2 Bathymetric map of the Tiancheng Seamount. (Contours are in 200 m)

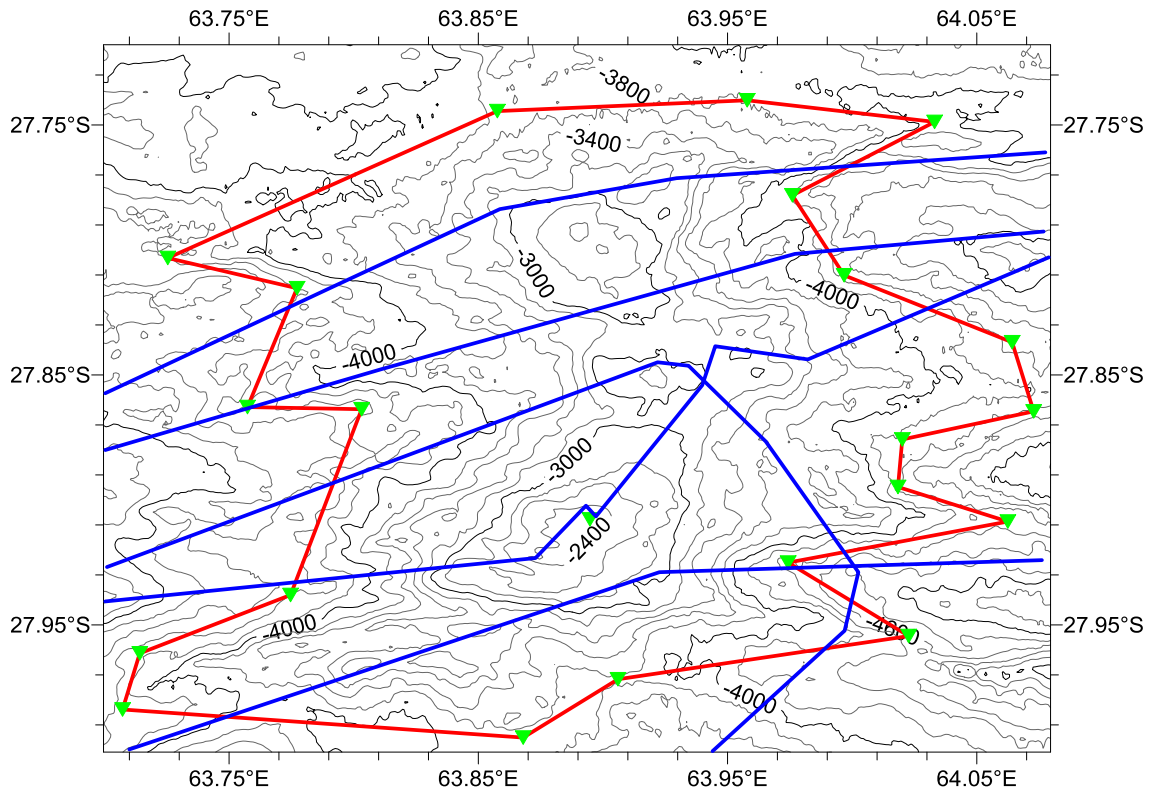


Fig.3 Bathymetric map of the Tiancheng Seamount, showing track lines.  
(Contours are in 200 m. Blue lines for the track lines.)

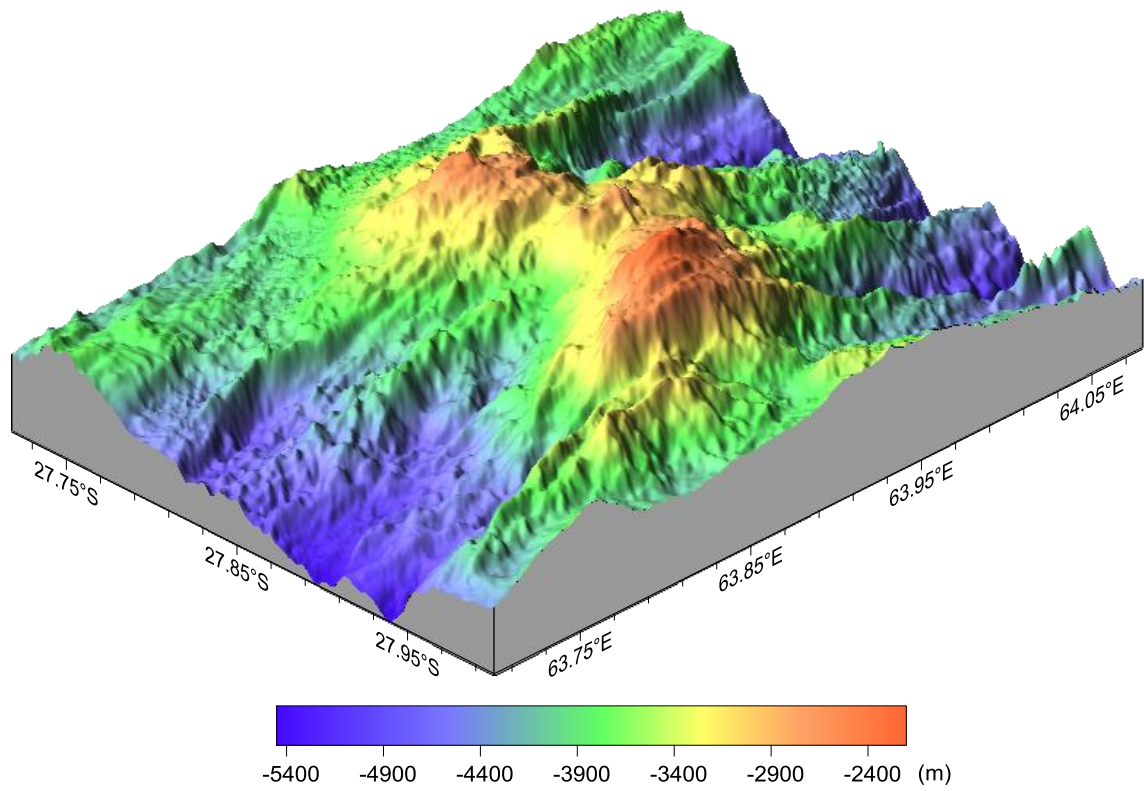


Fig.4 3-D bathymetric map of the Tiancheng Seamount.

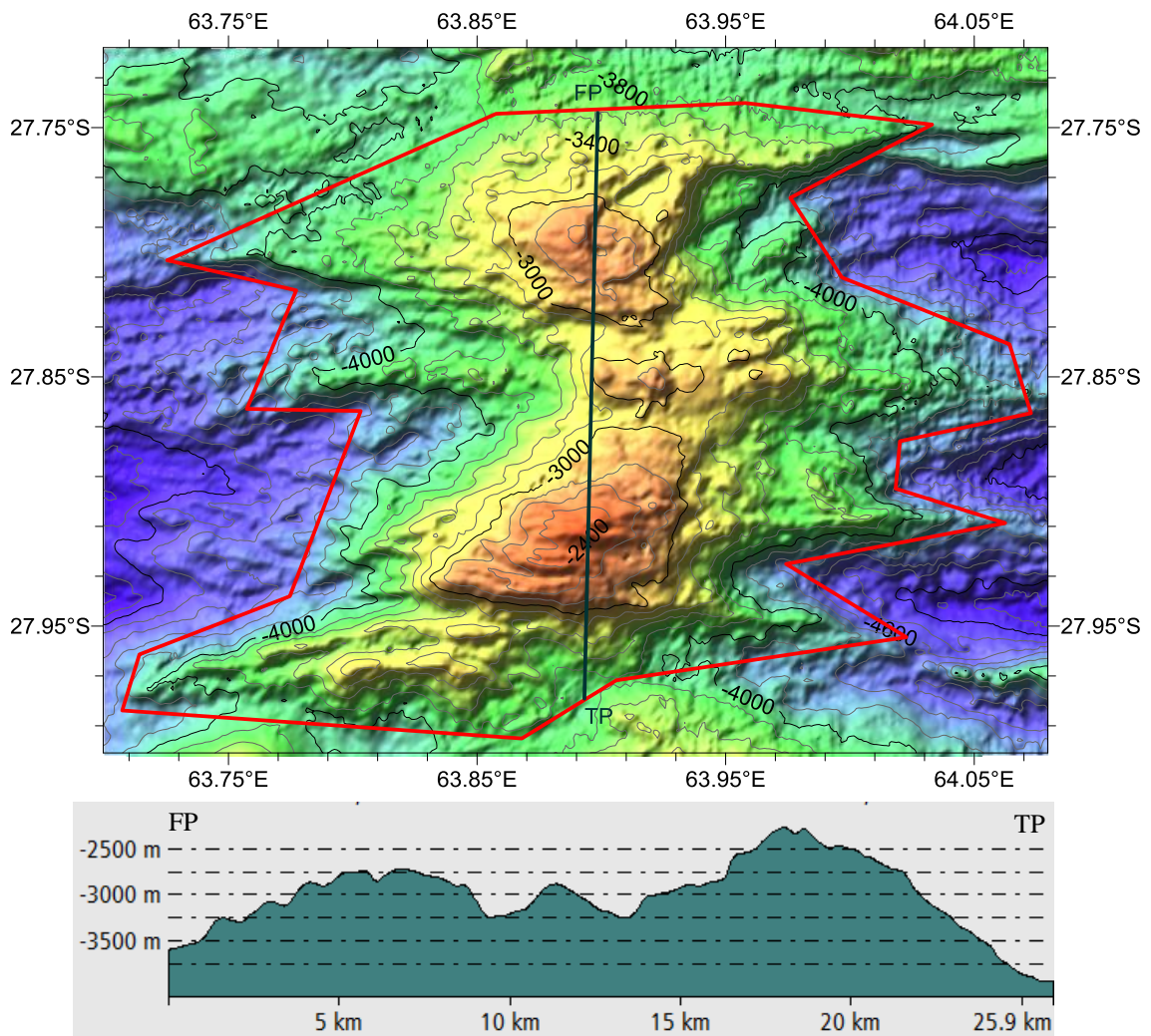


Fig.5 Profile map of the Tiancheng Seamount.