

**INTERNATIONAL HYDROGRAPHIC
ORGANIZATION**

**INTERGOVERNMENTAL
OCEANOGRAPHIC
COMMISSION (of UNESCO)**

UNDERSEA FEATURE NAME PROPOSAL

(Sea NOTE overleaf)

Note: The boxes will expand as you fill the form.

Name Proposed:	Fangzhou Seamount	Ocean or Sea:	The South Atlantic Ocean
-----------------------	-------------------	----------------------	--------------------------

Geometry that best defines the feature (Yes/No) :						
Point	Line	Polygon	Multiple points	Multiple lines*	Multiple polygons*	Combination of geometries*
		Yes				

* Geometry should be clearly distinguished when providing the coordinates below.

	Lat. (e.g. 63°32.6'N)	Long. (e.g. 046°21.3'W)
Coordinates:	25 °46.8'S (summit)	13°38.8'W (summit)
	25 °40.8'S (bottom)	13°44.0'W (bottom)
	25 °39.9'S	13°41.9'W
	25 °40.2'S	13°39.9'W
	25 °47.4'S	13 °36.0'W
	25 °50.1'S	13 °35.9'W
	25 °52.1'S	13°36.2'W
	25 °52.0'S	13°38.6'W
	25 °49.4'S	13°41.7'W
	25 °45.7'S	13°44.0'W
	25 °42.3'S	13 °44.7'W
25 °40.8'S	13°44.0'W	

Feature Description:	Maximum Depth:	4400m	Steepness :	
	Minimum Depth :	1600m	Shape :	
	Total Relief :	2800m	Dimension/Size :	10km×24km

Associated Features:	This seamount is located in the middle of South Atlantic Ocean . It extends from northwest to southeast. Its top develops two small sea peaks.
-----------------------------	--

Chart/Map References:	Shown Named on Map/Chart:	
	Shown Unnamed on Map/Chart:	GEBCO 5.12

	Within Area of Map/Chart:	
--	---------------------------	--

Reason for Choice of Name (if a person, state how associated with the feature to be named):	Fangzhou is from a poem in “Shi Jing Guo Feng” (an ancient book of poems). "When river water's deep and wide, I'll take a boat upon the tide. Where river water's low and slow, I'll swim or wade across the flow". This means that dealing with things is like crossing the river. If the river is deep, we raft through the river. If the river is shallow, we swim. It shows that, according to different situations, people should adopt different ways. The seamount named "Fangzhou" refers to the flexible means of transaction and the philosophy thinking of ancient Chinese people.
---	---

Discovery Facts:	Discovery Date:	Mar. 2011
	Discoverer (Individual, Ship):	R/V Dayang Yihao

Supporting Survey Data, including Track Controls:	Date of Survey:	Mar. 2011
	Survey Ship:	R/V Dayang Yihao
	Sounding Equipment:	EM120 multi-beam sounding system
	Type of Navigation:	StarFire-2050M WAD DGPS
	Estimated Horizontal Accuracy (nm):	<=0.0054nm
	Survey Track Spacing:	6nm
	Supporting material can be submitted as Annex in analog or digital form.	

Proposer(s):	Name(s):	Haiwen Zhang
	Date:	14 May 2014
	E-mail:	heyunxu@sina.com
	Organization and Address:	Sub Committee on Undersea Feature Names of China Committee on Geographical Names No.1 Fuxingmenwai Ave. Beijing

Remarks:	
-----------------	--

Attachments:

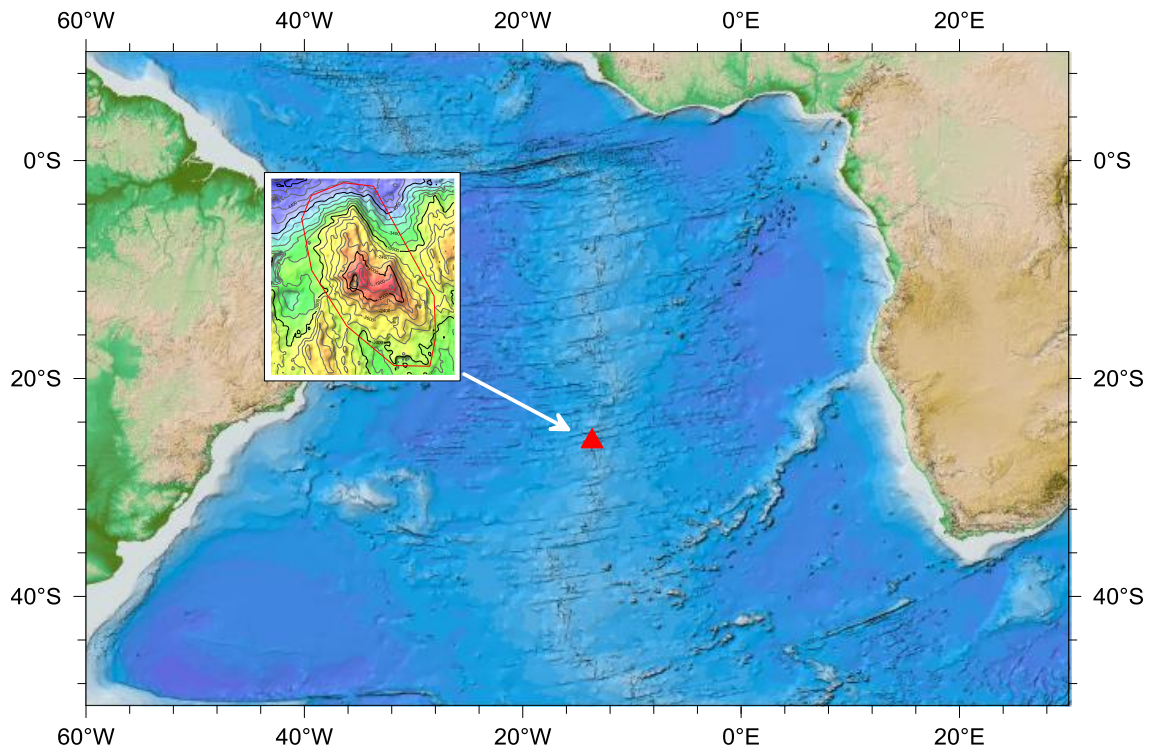


Fig.1 Index map showing the location of the Fangzhou Seamount.

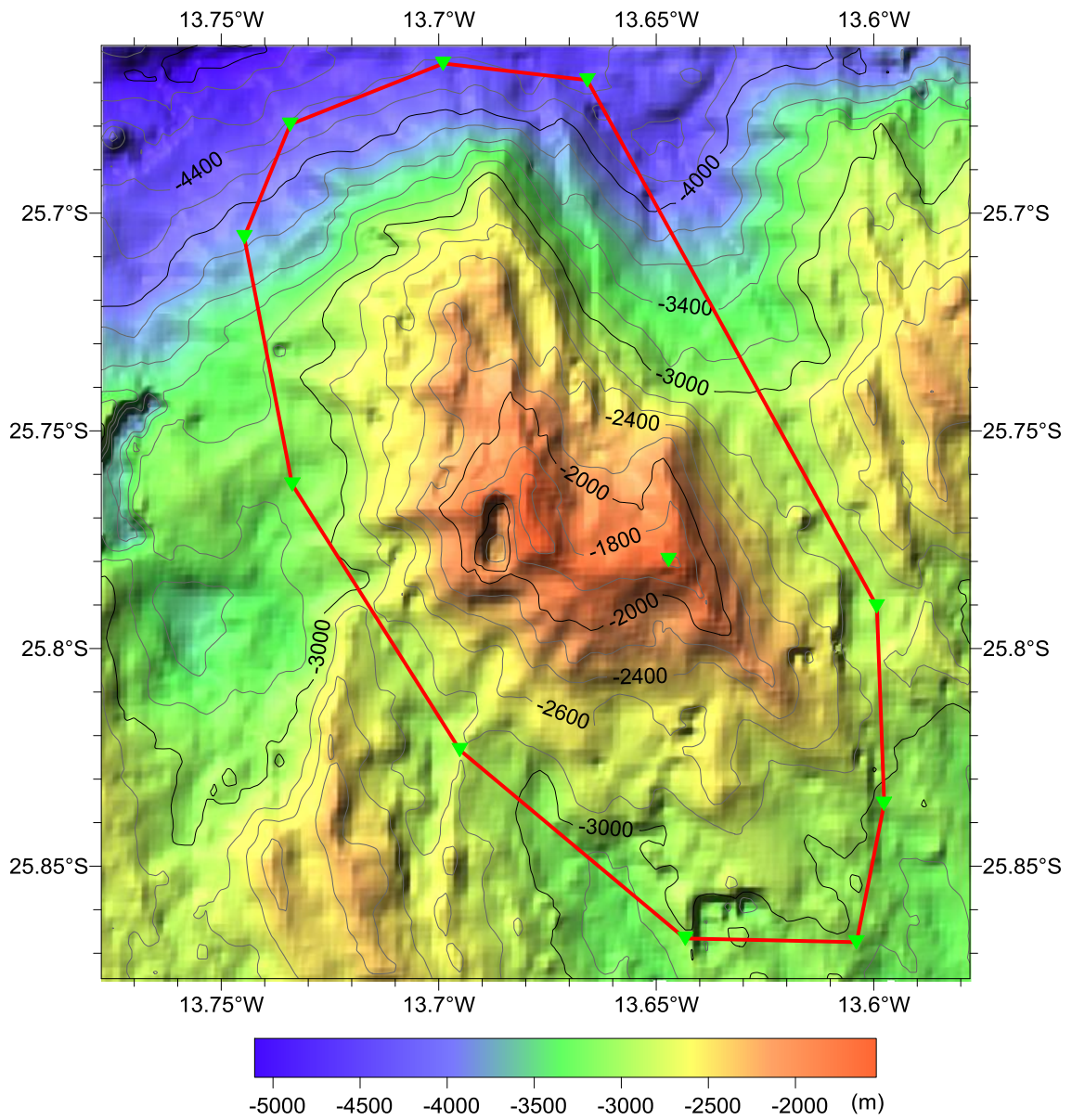


Fig.2 Bathymetric map of the Fangzhou Seamount. (Contours are in 200 m)

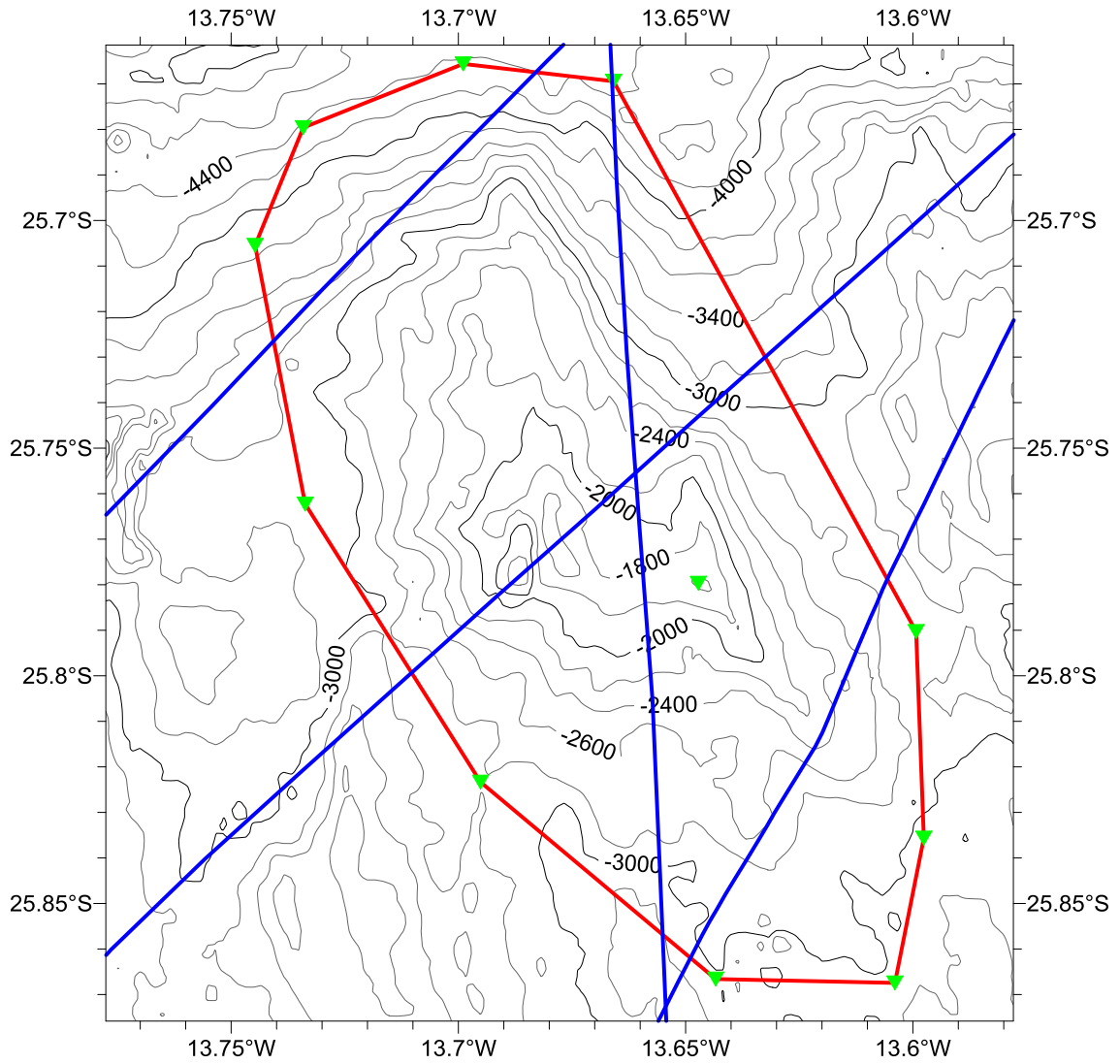


Fig.3 Bathymetric map of the Fangzhou Seamount, showing track lines.
(Contours are in 200 m. Blue lines for the track lines.)

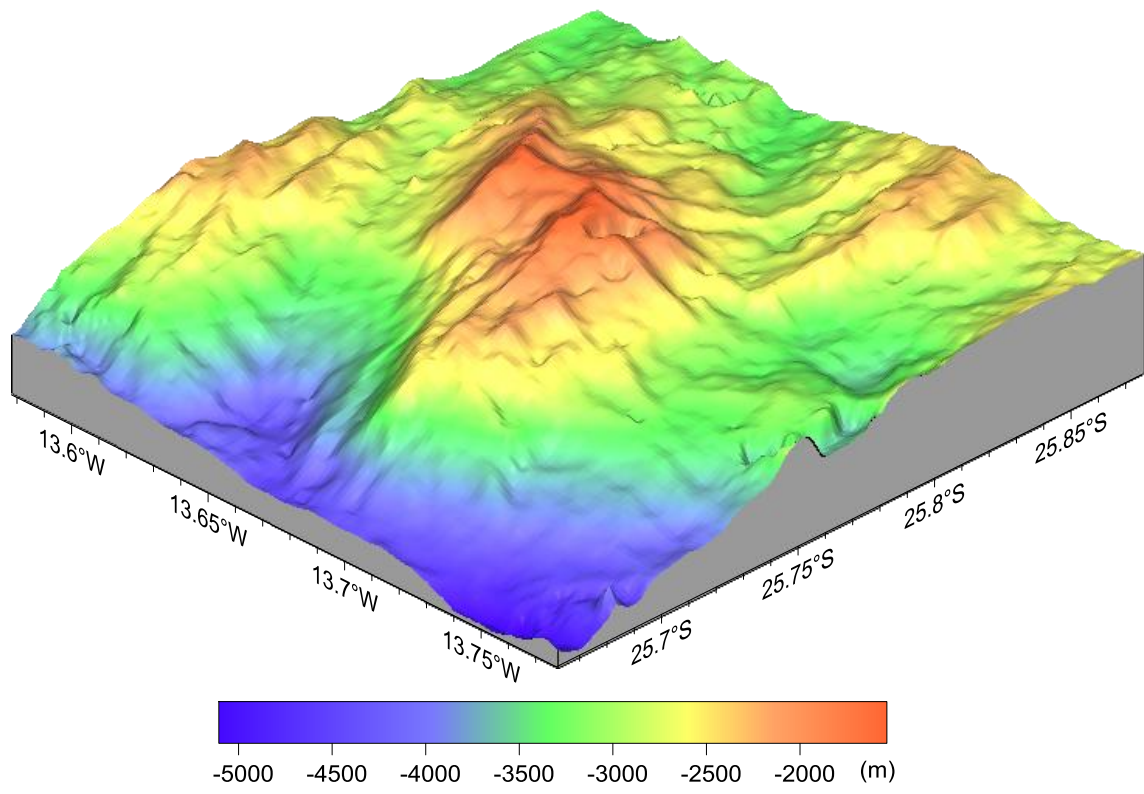


Fig.4 3-D bathymetric map of the Fangzhou Seamount.

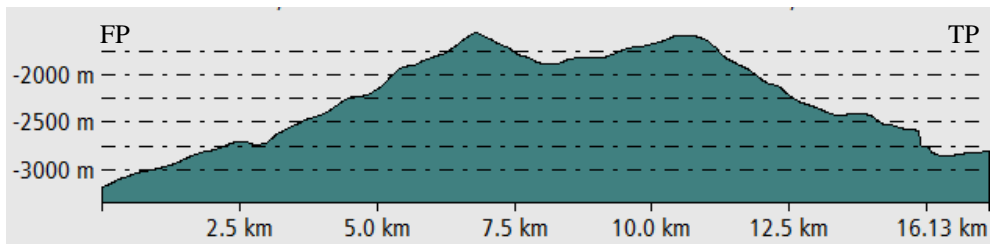
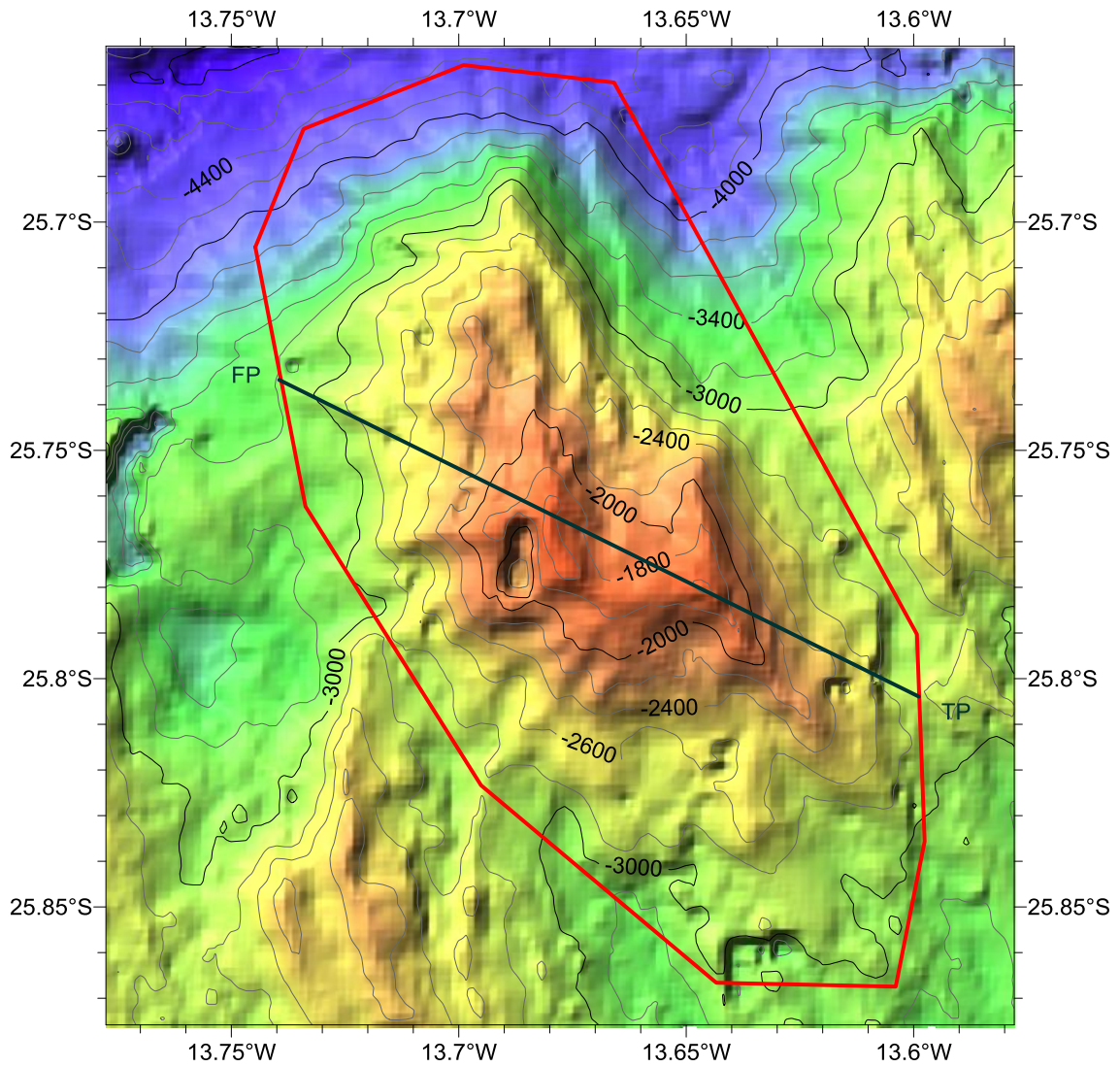


Fig.5 Profile map of the Fangzhou Seamount.