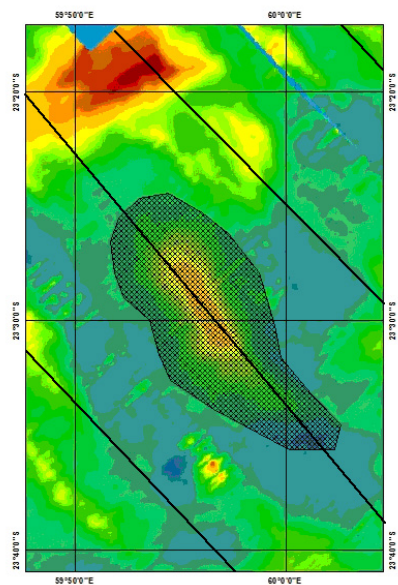
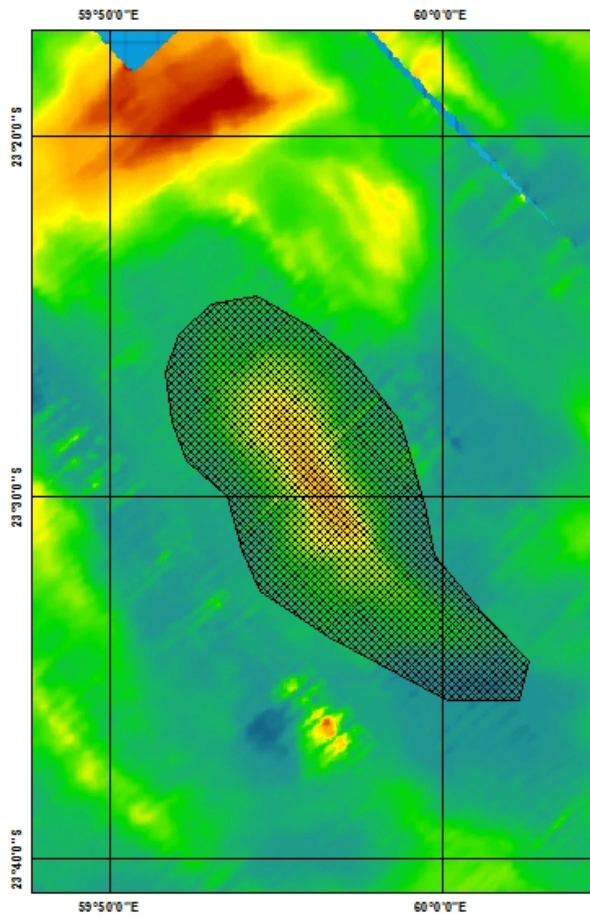


UNDERSEA FEATURE NAME *Aniva Seamount*

Coordinates of top: 23°30'S 59°58,8'E

Track lines



Steepness 10-17 grd

UNDERSEA FEATURE NAME *Bezrukov Ridge*

Coordinates of feature:

Lat.

Long.

25°47,4'S

62°18,5'E

25°51,3'S

62°15,7'E

25°55,4'S

62°11,4'E

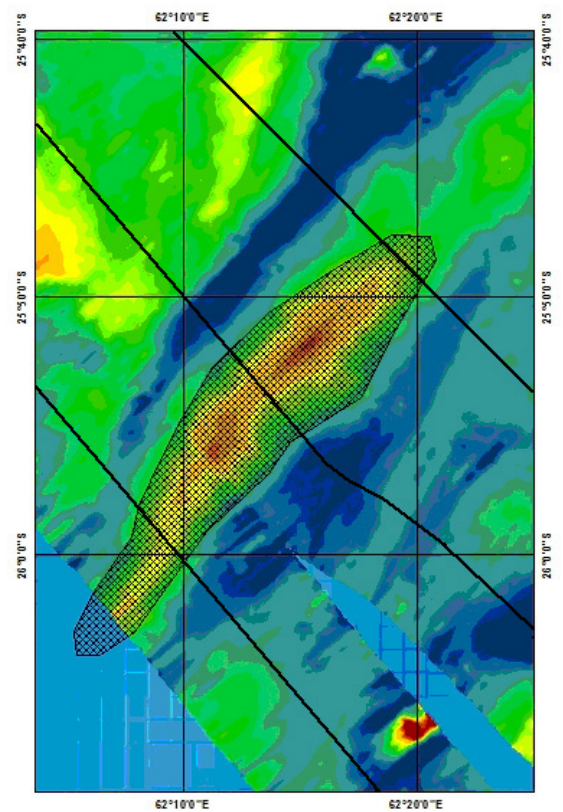
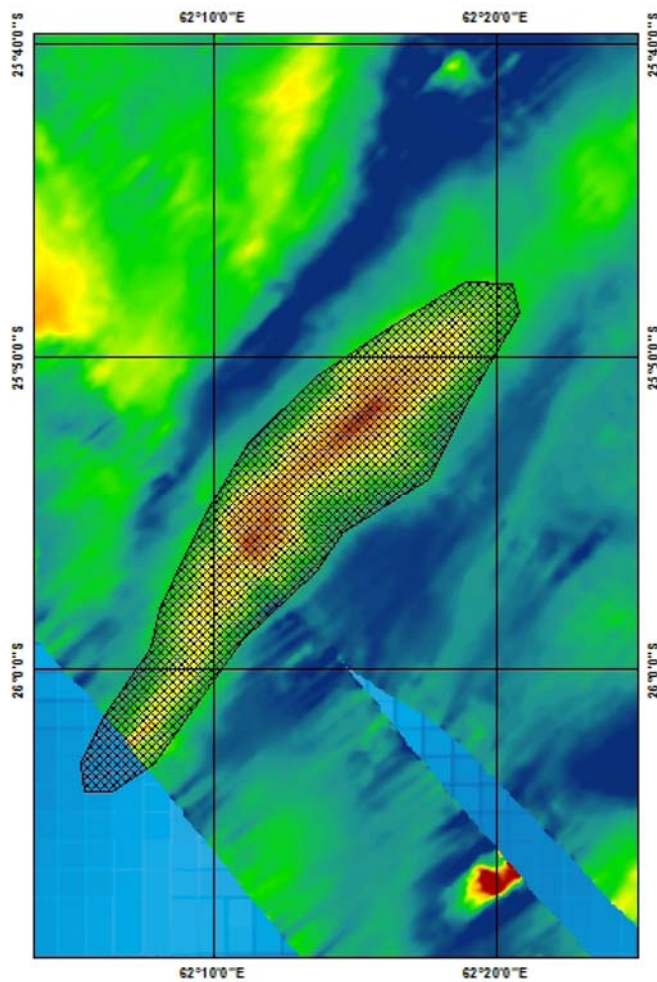
26°01,1'S

62°08,1'E

26°03,5'S

62°06,2'E

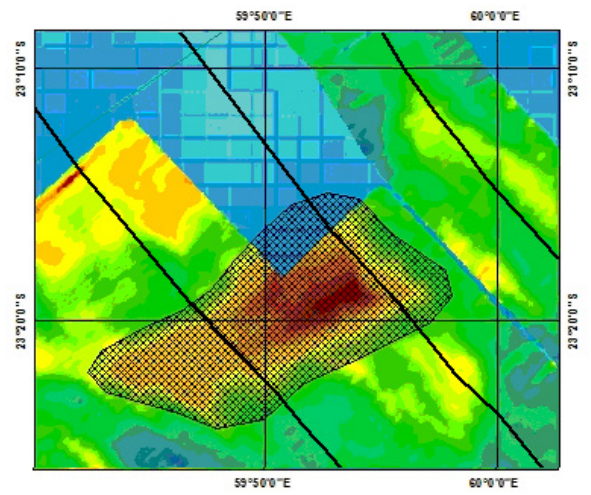
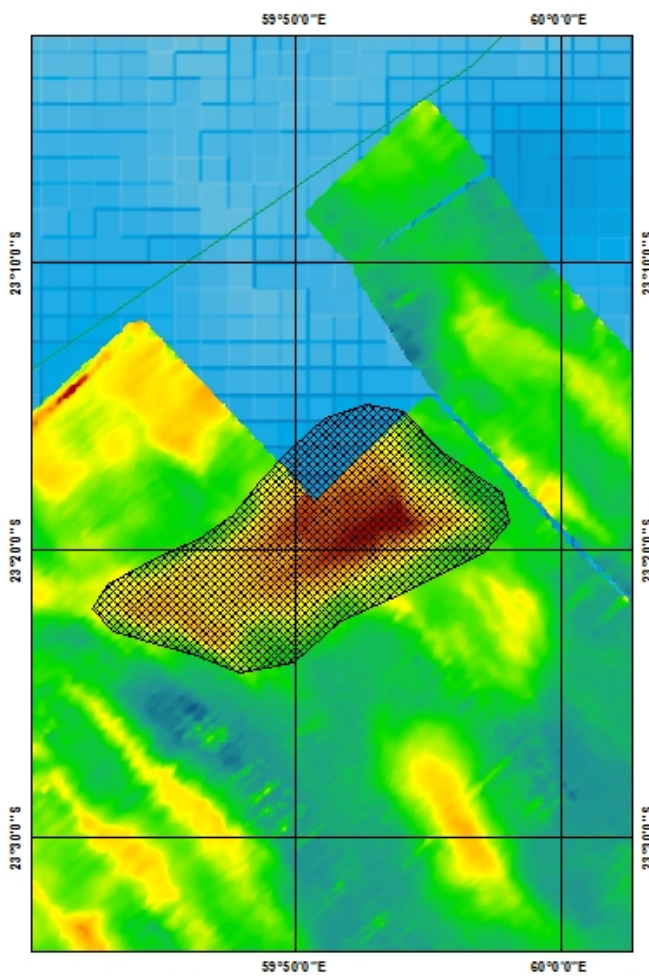
Track lines



UNDERSEA FEATURE NAME *Neprochnov Seamount*

Coordinates of top: 23°19,1'S 59°53,4'E

Track lines

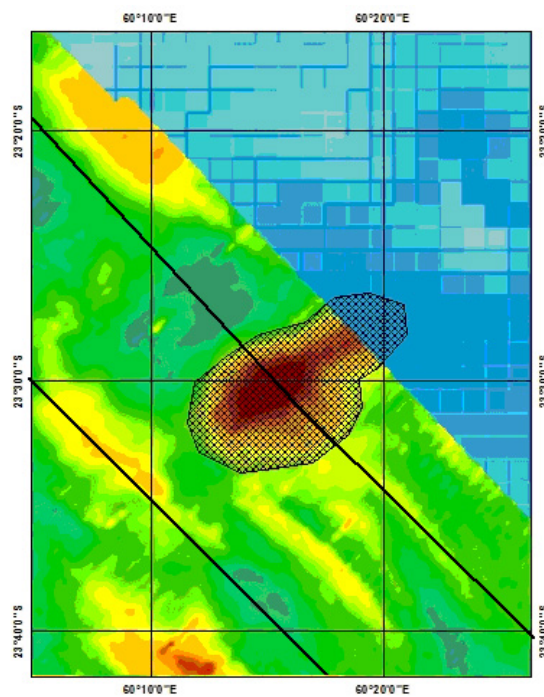
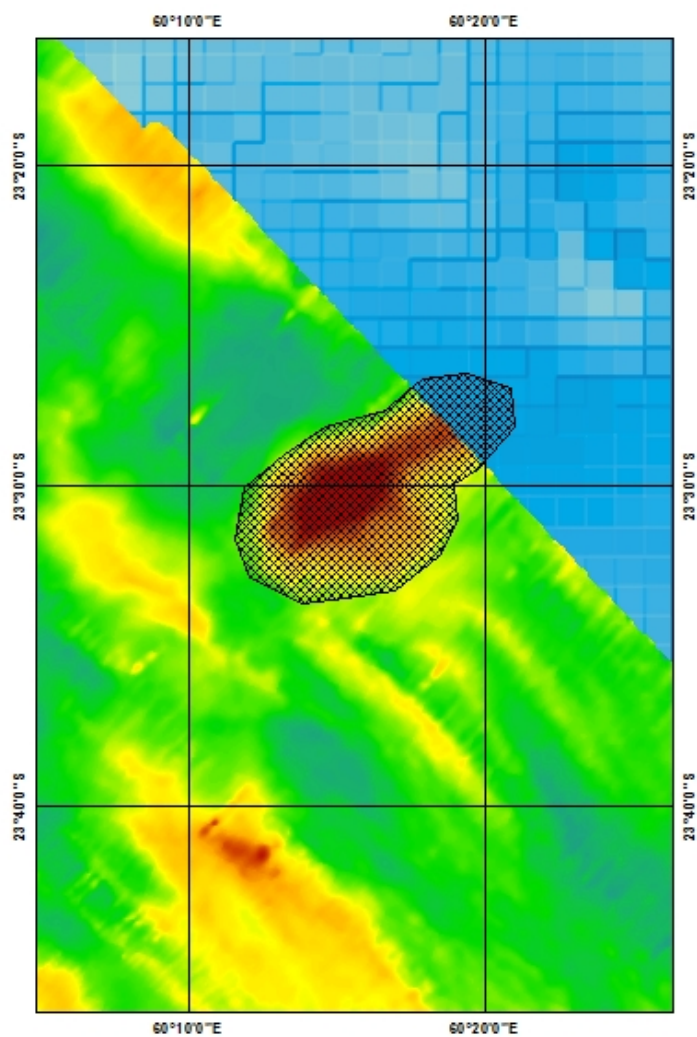


Steepness 10-15 grd

UNDERSEA FEATURE NAME *Zhuze Seamount*

Coordinates of top: 23°30'S 60°15,8'E

Track lines



Steepness 13-21 grd