

Candidate SEAMOUNT 2, Nazca Ridge, South Pacific

32-54s., 83-38w **[correction: 23 54.3' S, 83 37.9'W]**

SW of Leont'ev Seamount

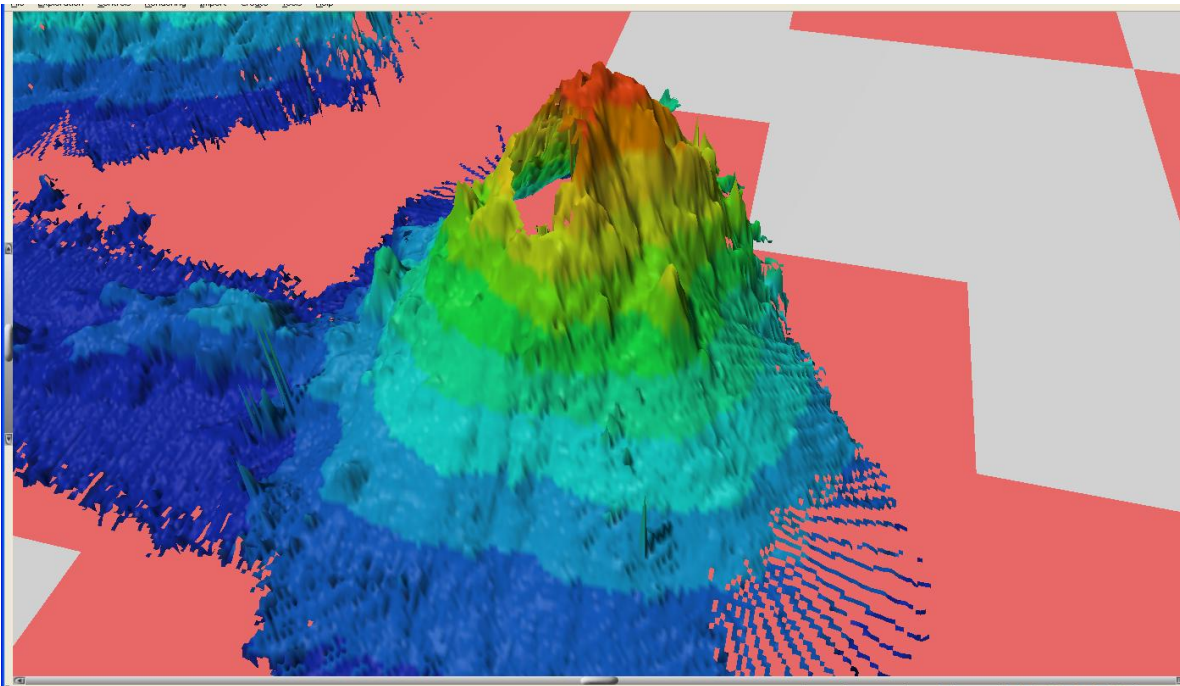
Maximum rise, > 2,000m as measured from 3,500m isobaths, NE-SW profile

Least Depth, 755

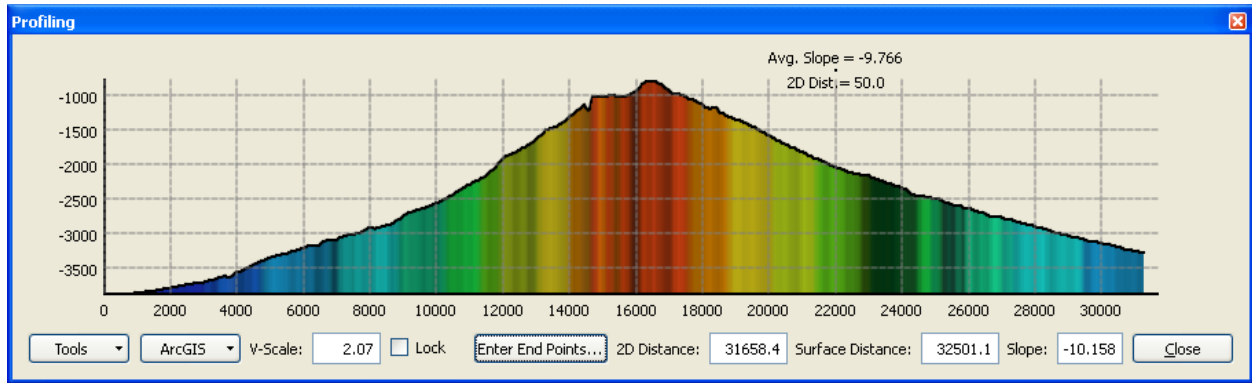
Maximum slope, 27%

Dimensions-29km NE/SW transect, between 3,500m isobaths, 14km NW/SE transect, between the 2,000m isobaths (note, data is incomplete on the SE quadrant of feature, peak appears to be adequately defined.

Source, multibeam dataset DRFT06RR, R/V Roger Revell, 2001.



Candidate 2 from SSW, exaggeration 6x



Profile, Candidate 2 NE/SW transect, all units in meters