

**UNDERSEA FEATURE NAME PROPOSAL**

(See NOTE overleaf)

Note: The boxes will expand as you fill the form.

<b>Name Proposed:</b>	Penxi Canyon	<b>Ocean or Sea:</b>	the South China Sea
-----------------------	--------------	----------------------	---------------------

<b>Geometry that best defines the feature (Yes/No) :</b>						
Point	Line	Polygon	Multiple points	Multiple lines*	Multiple polygons*	Combination of geometries*
	Yes					

\* Geometry should be clearly distinguished when providing the coordinates below.

	Lat. (e.g. 63°32.6'N)	Long. (e.g. 046°21.3'W)
<b>Coordinates:</b>	13°31.5'N	110°58.0'E
	13°29.3'N	111°12.2'E
	13°21.0'N	111°22.8'E
	13°15.5'N	111°34.4'E
	13°14.7'N	111°39.4'E
	13°08.4'N	111°44.1'E
	13°00.6'N	111°47.3'E
	12°56.3'N	111°54.3'E
	12°51.0'N	112°05.8'E
	12°39.4'N	112°15.0'E

<b>Feature Description:</b>	Maximum Depth:	4400	Steepness :	0.5 °-1.5 °
	Minimum Depth :	2800	Shape :	Elongated
	Total Relief :	1600	Dimension/Size :	170km × 10km

<b>Associated Features:</b>	Penxi Canyon lies in the western slope of the South China Sea. This canyon extends into South China Sea Basin from northwest to southeast. The length of this canyon is 170 km.
-----------------------------	---

<b>Chart/Map References:</b>	Shown Named on Map/Chart:	
	Shown Unnamed on Map/Chart:	GEBCO 5.06
	Within Area of Map/Chart:	

<b>Reason for Choice of Name</b> (if a person, state how associated with the feature to be named):	Penxi Canyon is named after its relative position. Penxi means it is to the west of South China Sea Basin.
--	--

<b>Discovery Facts:</b>	Discovery Date:	1998
	Discoverer (Individual, Ship):	R/V Haiyang Sihao

<b>Supporting Survey Data, including Track Controls:</b>	Date of Survey:	1998-1999
	Survey Ship:	R/V Haiyang Sihao
	Sounding Equipment:	Multi-beam sounding system (Seabeam2112)
	Type of Navigation:	DGPS
	Estimated Horizontal Accuracy (nm):	<=0.08 nm

	Survey Track Spacing:	4nm
Supporting material can be submitted as Annex in analog or digital form.		

<b>Proposer(s):</b>	Name(s):	Zhu Benduo, Huang Wenxing
	Date:	2016.8.10
	E-mail:	Zhubenduo@163.com
	Organization and Address:	Guangzhou Marine Geological Survey, China Geological Survey. No.188 Guanghai Rd., Huangpu District, Guangzhou, China.

<b>Remarks:</b>	The proposal has been reviewed and approved by Sub-Committee on Undersea Feature Names of China Committee on Geographical Names (CCUFN). No.1, Fuxingmenwai Street, Xicheng District, Beijing, China, 100860 heyunxu@sina.com
-----------------	---

Attachment

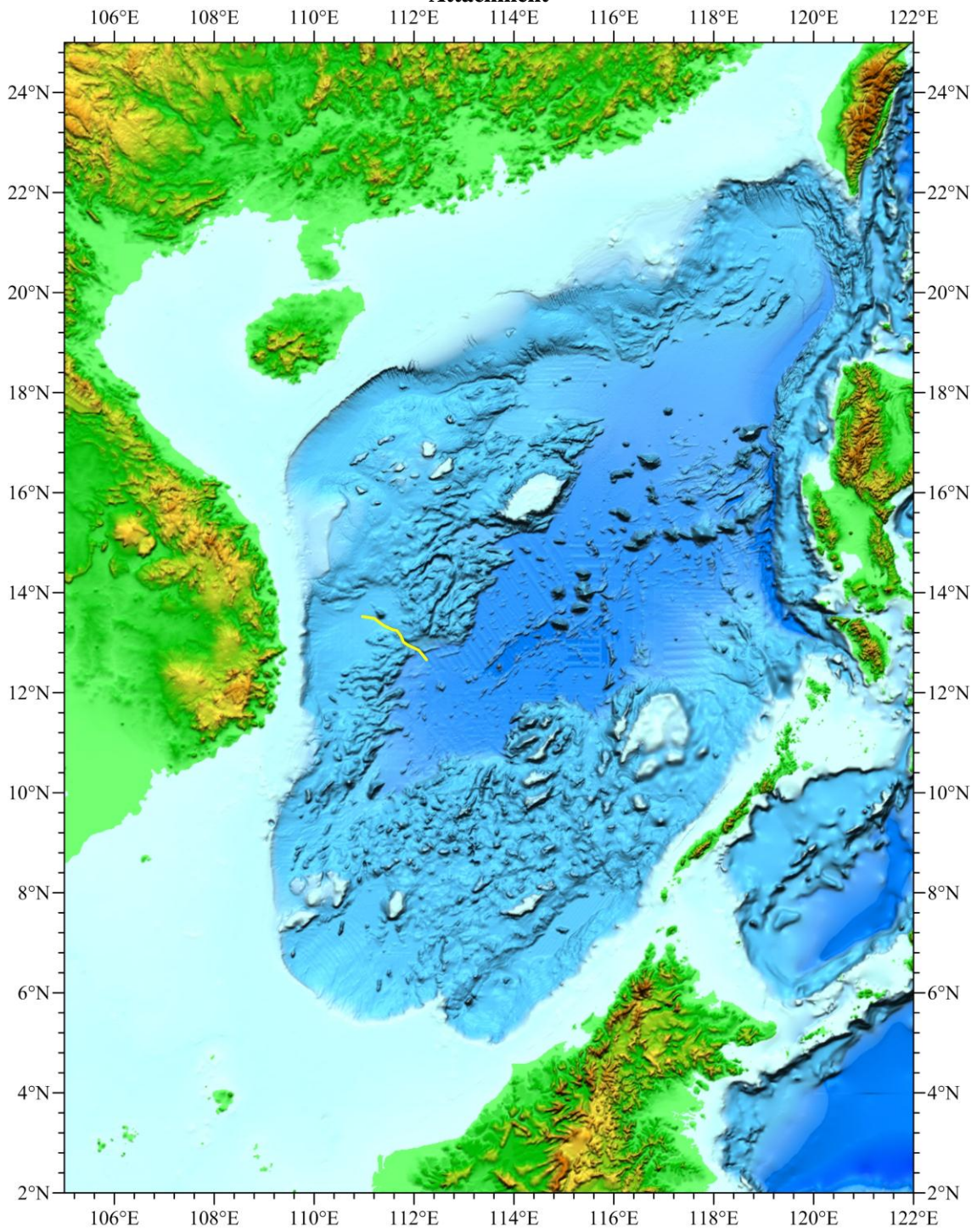
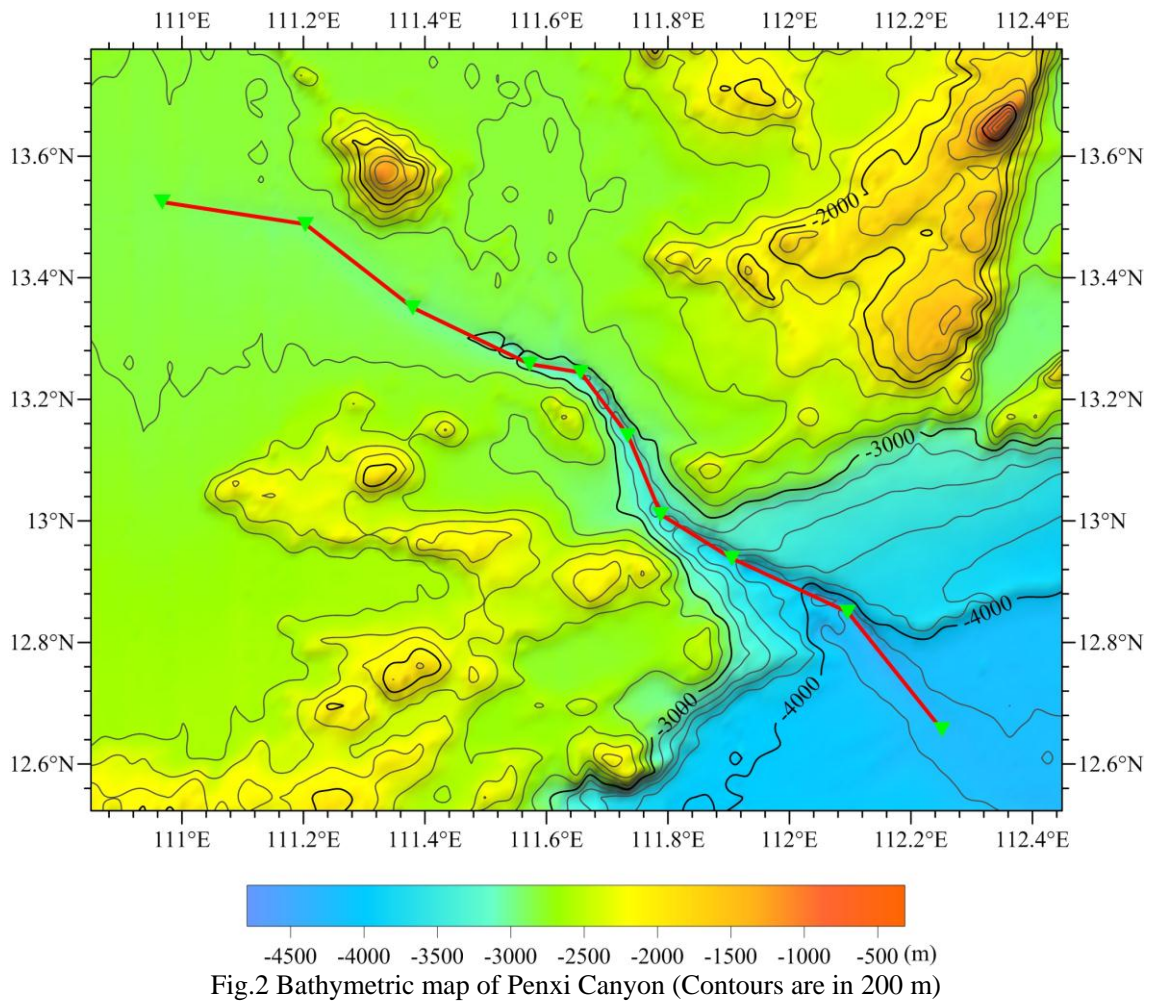


Fig.1 Index map showing the location of Penxi Canyon.



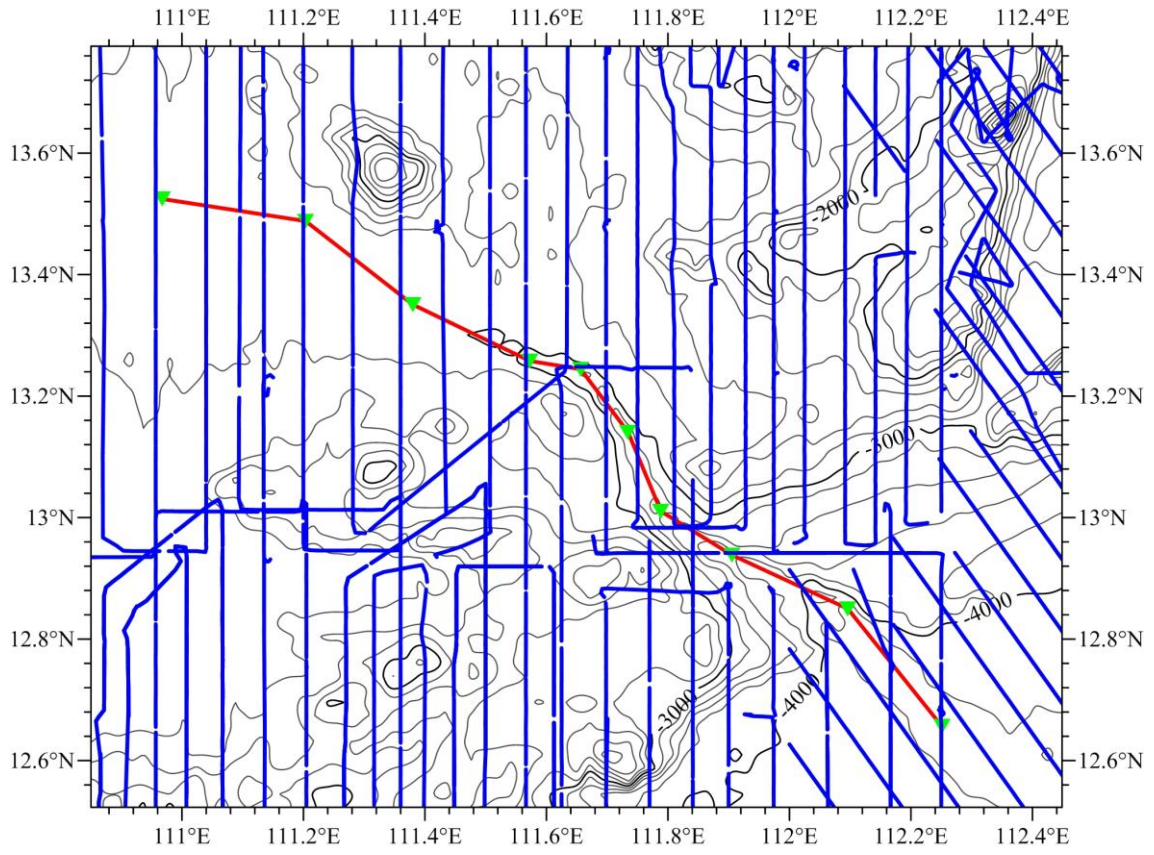


Fig.3 Bathymetric map of Penxi Canyon overlain with track lines  
(Contours are in 200 m, blue lines for the track lines)

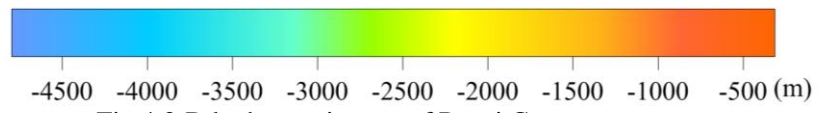
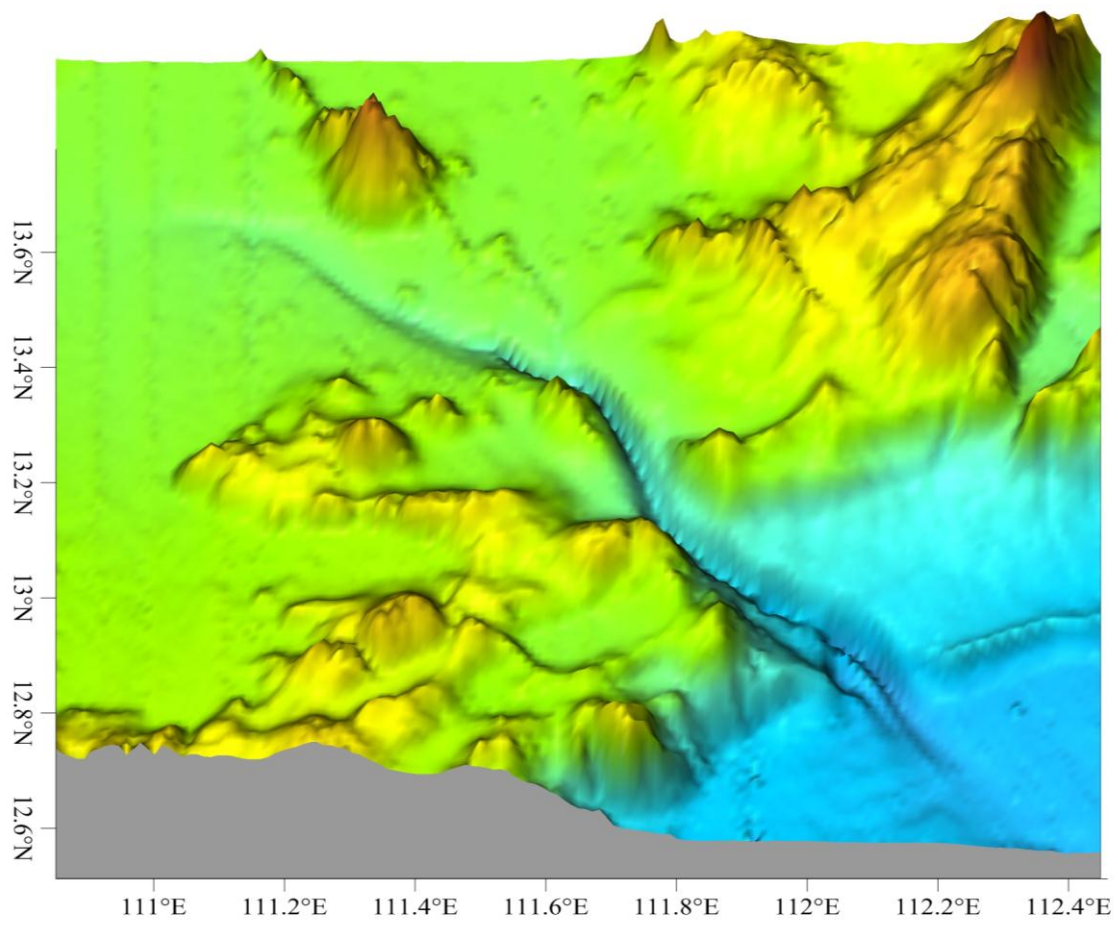
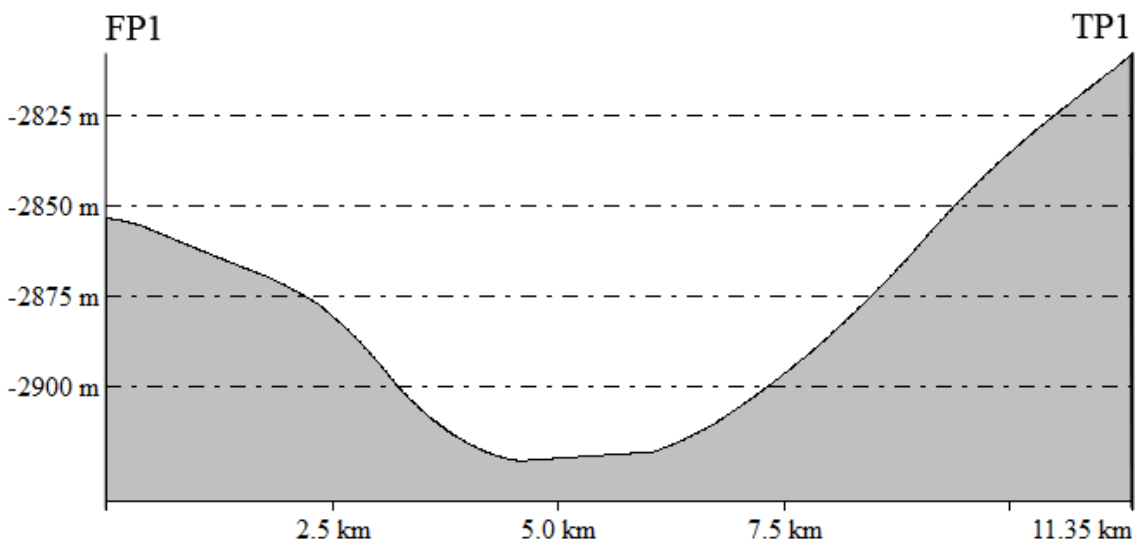
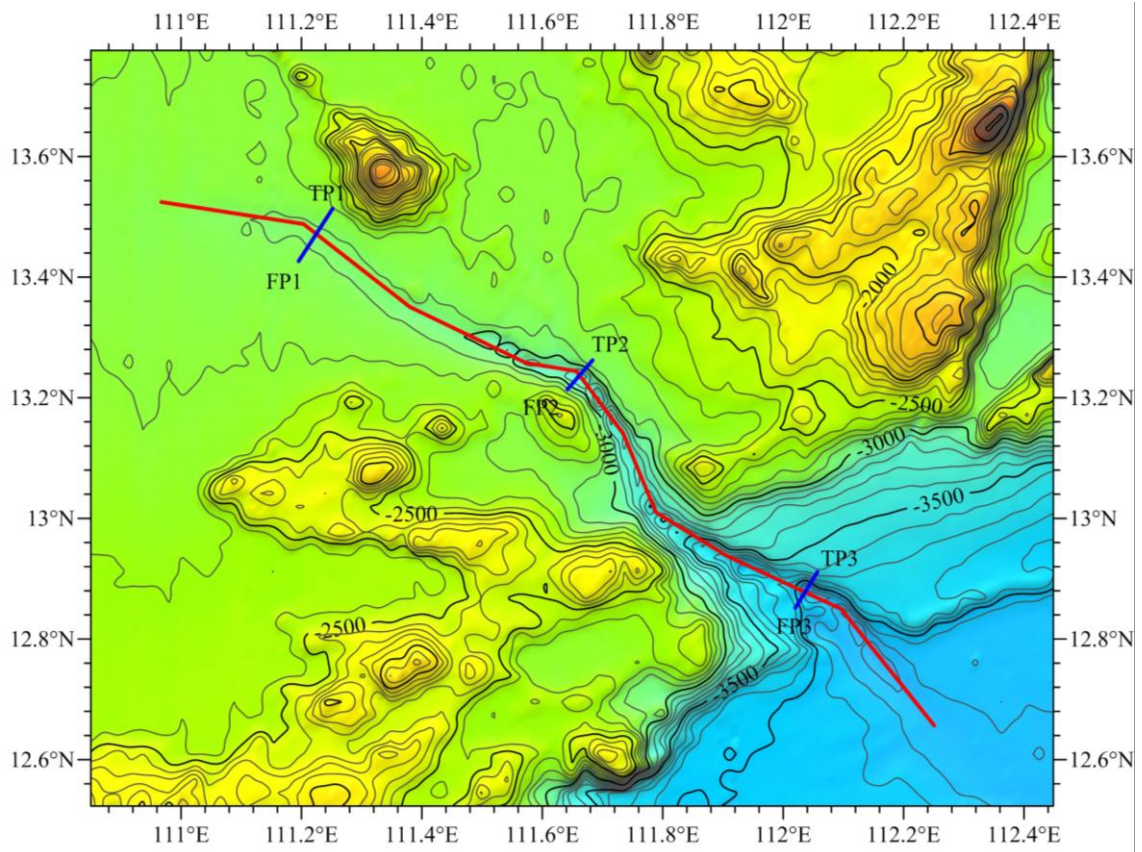


Fig.4 3-D bathymetric map of Penxi Canyon



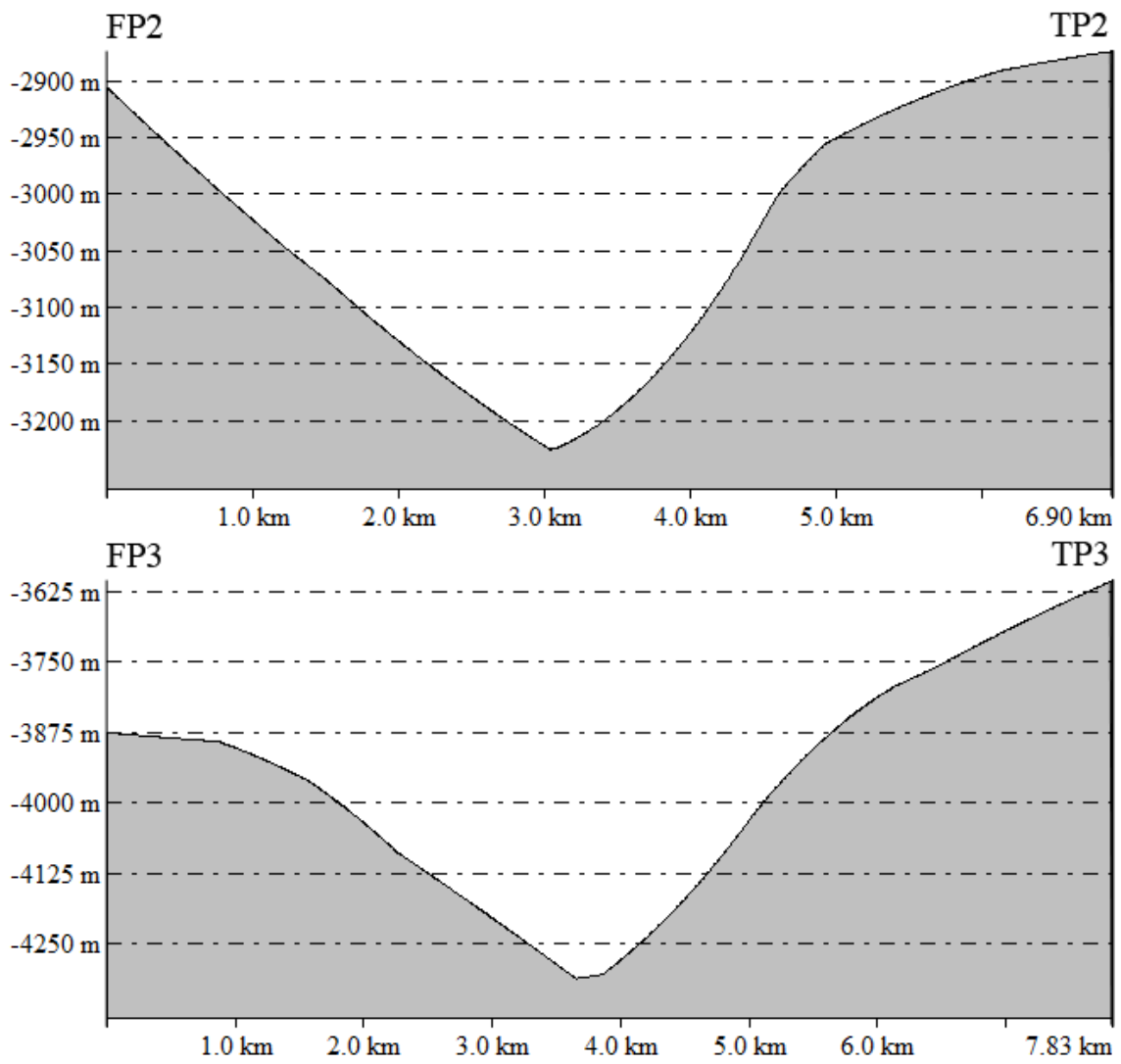


Fig.5 Profile map of Penxi Canyon