

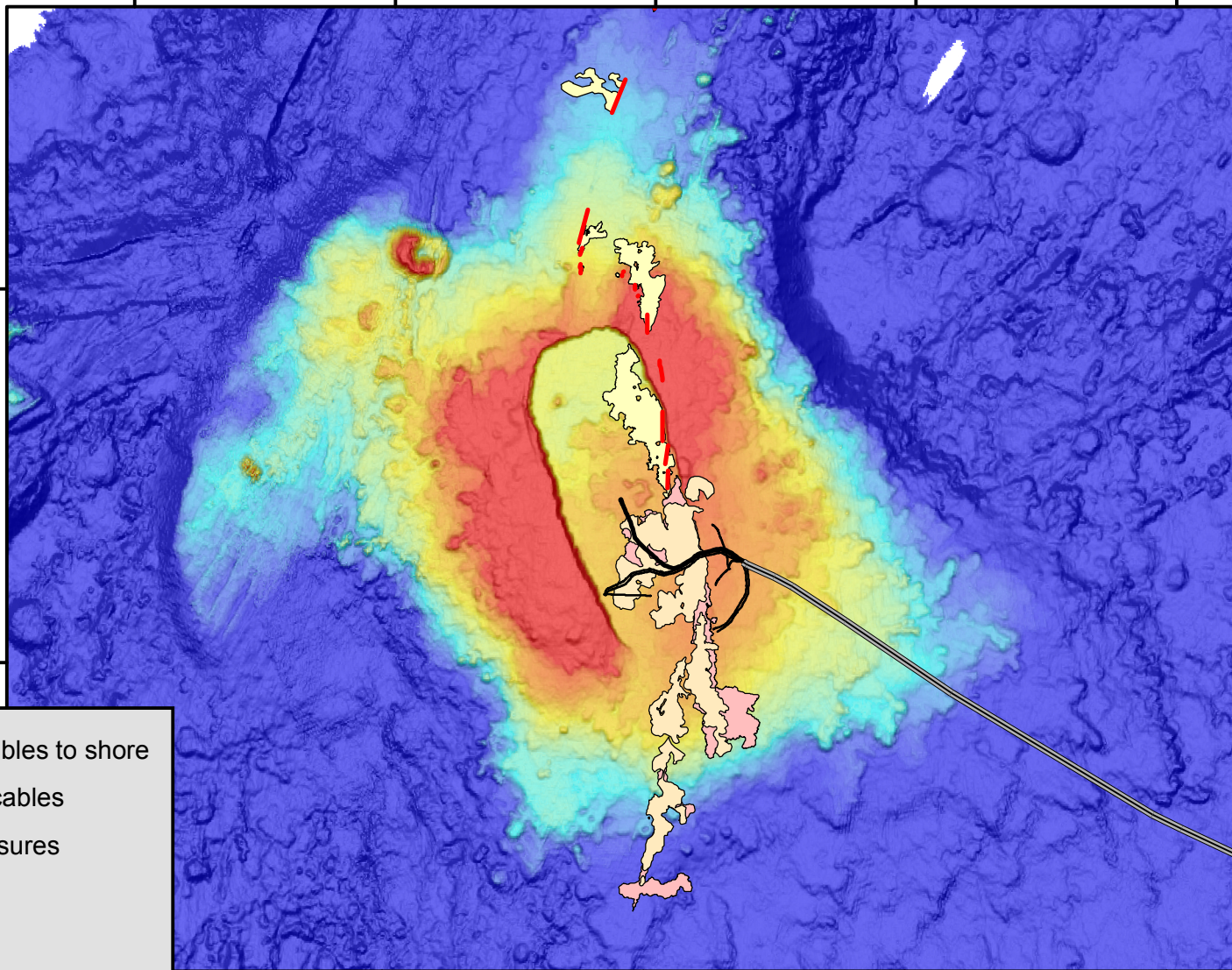
130°10'0"W

130°5'0"W

130°0'0"W

129°55'0"W

129°50'0"W



46°0'0"N

45°55'0"N

— OOI Real-time data cables to shore

— OOI Axial Instrument cables

— Axial 2015 eruptive fissures

2015 Lava Flow

2011 Lava Flow

1998 Lava Flow

EM300 Multibeam Bathymetry

depths

High : -1500

Low : -1700