

**UNDERSEA FEATURE NAME PROPOSAL**

(See **NOTE** overleaf)

Note: The boxes will expand as you fill the form.

<b>Name Proposed:</b>	Xiazhi Seamount	<b>Ocean or Sea:</b>	West Pacific Ocean
-----------------------	-----------------	----------------------	--------------------

<b>Geometry</b> that best defines the feature (Yes/no):						
Point	Line	Polygon	Multiple points	Multiple lines*	Multiple polygons*	Combination of geometries*
		Yes				

\* Geometry should be clearly distinguished when providing the coordinates below.

<b>Coordinates:</b>	Lat. (e.g. 63°32.6'N)	Long. (e.g. 046°21.3'W)
	15 44.7 'N (top)	133 51.3 'E (top)
	15 43.1'N (bottom)	133 57.8 'E (bottom)
	15 44.7'N	133 56.3 'E
	15 46.2'N	133 54.2 'E
	15 47.2'N	133 53.1 'E
	15 48.4'N	133 52.3 'E
	15 49.7'N	133 51.8 'E
	15 50.1'N	133 51.6 'E
	15 50.1'N	133 50.6 'E
	15 49.5'N	133 49.3 'E
	15 49.3'N	133 48.3 'E
	15 49.9'N	133 46.3 'E
	15 50.4'N	133 45.0 'E
	15 50.9'N	133 43.3 'E
	15 51.6'N	133 42.4 'E
	15 51.9'N	133 40.9 'E
	15 51.7'N	133 40.1 'E
	15 50.8'N	133 39.2 'E
	15 50.0'N	133 38.2 'E
15 48.8'N	133 36.6 'E	
15 48.0'N	133 35.7 'E	
15 47.2'N	133 34.7 'E	
15 46.9'N	133 34.1 'E	
15 46.9'N	133 32.9 'E	
15 46.5'N	133 32.4 'E	
15 45.9'N	133 32.6 'E	
15 45.9'N	133 33.7 'E	
15 45.7'N	133 33.9 'E	

15 44.7'N	133 33.6 'E
15 43.6'N	133 32.8 'E
15 43.2'N	133 32.2 'E
15 42.4'N	133 31.7 'E
15 41.7'N	133 31.7 'E
15 41.5'N	133 32.1 'E
15 41.6'N	133 32.7 'E
15 42.1'N	133 33.0 'E
15 42.2'N	133 34.3 'E
15 42.5'N	133 35.4 'E
15 42.4'N	133 36.8 'E
15 42.8'N	133 38.4 'E
15 43.1'N	133 39.6 'E
15 43.5'N	133 40.7 'E
15 43.2'N	133 42.0 'E
15 42.5'N	133 43.0 'E
15 41.9'N	133 44.1 'E
15 41.5'N	133 45.0 'E
15 41.4'N	133 46.0 'E
15 41.9'N	133 47.5 'E
15 42.3'N	133 48.7 'E
15 41.8'N	133 49.5 'E
15 41.7'N	133 50.3 'E
15 42.3'N	133 51.2 'E
15 42.9'N	133 51.6 'E
15 42.6'N	133 52.5 'E
15 42.2'N	133 53.5 'E
15 41.9'N	133 54.3 'E
15 42.1'N	133 56.0 'E
15 42.4'N	133 57.3 'E
15 43.1'N	133 57.8 'E

<b>Feature description:</b>	Maximum Depth:	5300 m	Steepness:	
	Minimum Depth:	3660 m	Shape:	polygon
	Total Relief:	1640m	Dimension/Size:	45km × 18km

<b>Associated Features:</b>	This seamount is located on the Kyushu-Palau ridge. It is about 64km north to “Qingming” Seamount. The base size of this seamount is about 45km. The water depth is about 3660 m to the top and about 5300m to foothills.
-----------------------------	---

<b>Chart/Map References:</b>	Shown Named on Chart/Map	
	Shown Unnamed on Chart/Map	GEBCO 5.07
	Within Area of Chart/Map	

<b>Reason for Choice of Name</b> (if a person, state how associated with the feature to be named):	The UN Educational, Scientific, and Cultural Organization (UNESCO) adopted a decision that China's "the 24 Solar Terms" be inscribed on the Representative List of the Intangible Cultural Heritage of Humanity on 30 November in Ethiopia's capital Addis Ababa. "The 24 Solar Terms" is the Chinese heritage and knowledge in China of time and practices developed through observation of the sun's annual motion. The ancient Chinese divided the sun's annual circular motion into 24 segments. Each segment was called a specific Solar Term. "Xiazhi" is the tenth term of the 24 Solar Terms in lunar calendar. "Xiazhi" means Summer solstice.
---	---

<b>Discovery Facts:</b>	Discovery Date:	September 2014
	Discoverer(individual, ship):	R/V Xiang Yang Hong 10

<b>Supporting Survey data, including Track Controls:</b>	Date of survey:	September 2014
	Survey ship:	R/V Xiang Yang Hong 10
	Sounding Equipment:	SeaBeam3012
	Type of navigation:	StarFire3050M
	Estimated Horizontal Accuracy:	0.0005nm (1m)
	Distance between survey lines:	10 km
	Supporting material can be submitted as annex in analog or digital form.	

<b>Proposer(s):</b>	Name(s):	The Second Institute of Oceanography, SOA, China
	Date :	28 May 2017
	E-mail:	0911guang@163.com
	Organization and address:	The Second Institute of Oceanography, No.36 Baochubei Road, Hangzhou China 310012
	Concurrer (name, organization, address):	Lishoujun, Zhaodineng, Wuziyin, Wuzhaocai, Luoxiaowen, Shangjihong, The Second Institute of Oceanography
<b>Remark :</b>	The proposal has been reviewed and approved by Sub-Committee on Undersea Feature Names of China Committee on Geographical Names (CCUFN) No.1 Fuxingmenwai Ave. Beijing 100860 heyunxu@sina.com	

**Note:** this form should be forwarded, when completed:

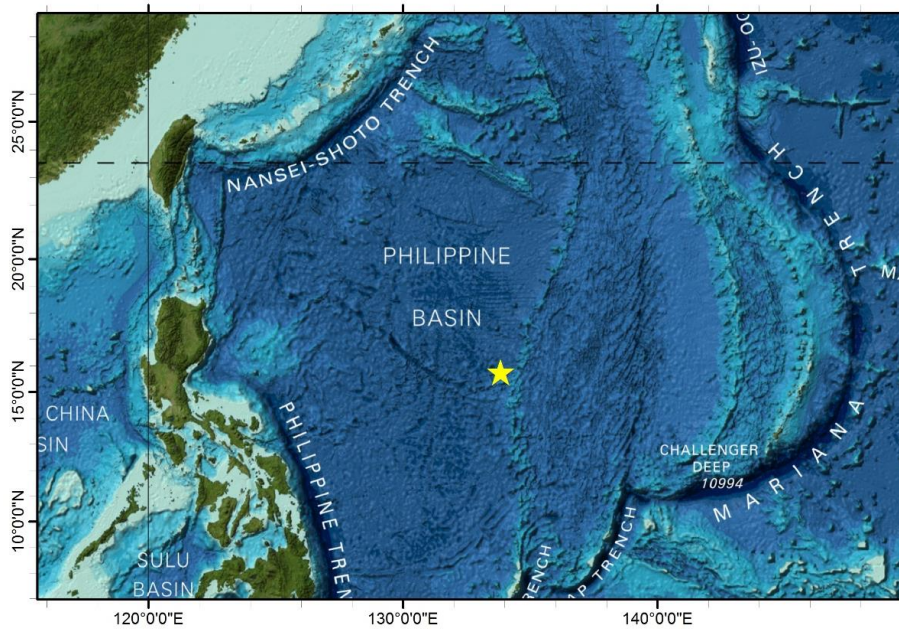
- a) **If the undersea feature is located inside the external limit of the territorial sea:** to your

“National Authority for Approval of Undersea Feature Names”(see page 2-9) or, if this does exist or is not known, either to the IHB or to the IOC (see address below):

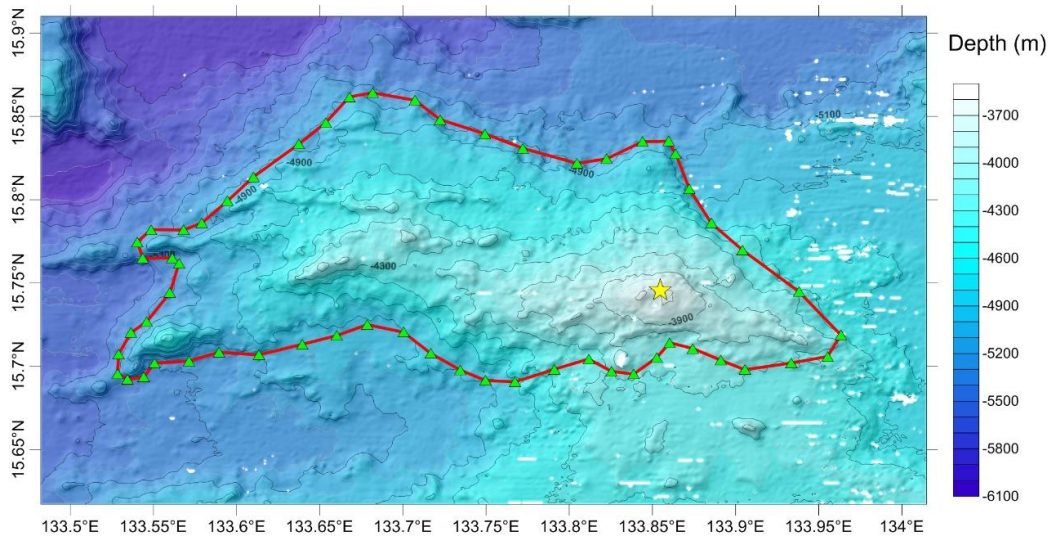
- b) **If at least 50% of the undersea feature is located outside the external limits of the territorial sea**: to the IHB or to the IOC, at the following address:

International Hydrographic Bureau (IHB) 4, Quai Antoine 1er B.P. 445 MC 98011 MONACO CEDEX <u>Principality of MONACO</u> Fax: +377 93 10 81 40 E-mail: <a href="mailto:info@ihb.mc">info@ihb.mc</a>	Intergovernmental Oceanographic Commission (IOC) UNESCO Place de Fontenoy 75700 PARIS <u>France</u> Fax: +33 1 45 68 58 12 E-mail: <a href="mailto:info@unesco.org">info@unesco.org</a>
---	---

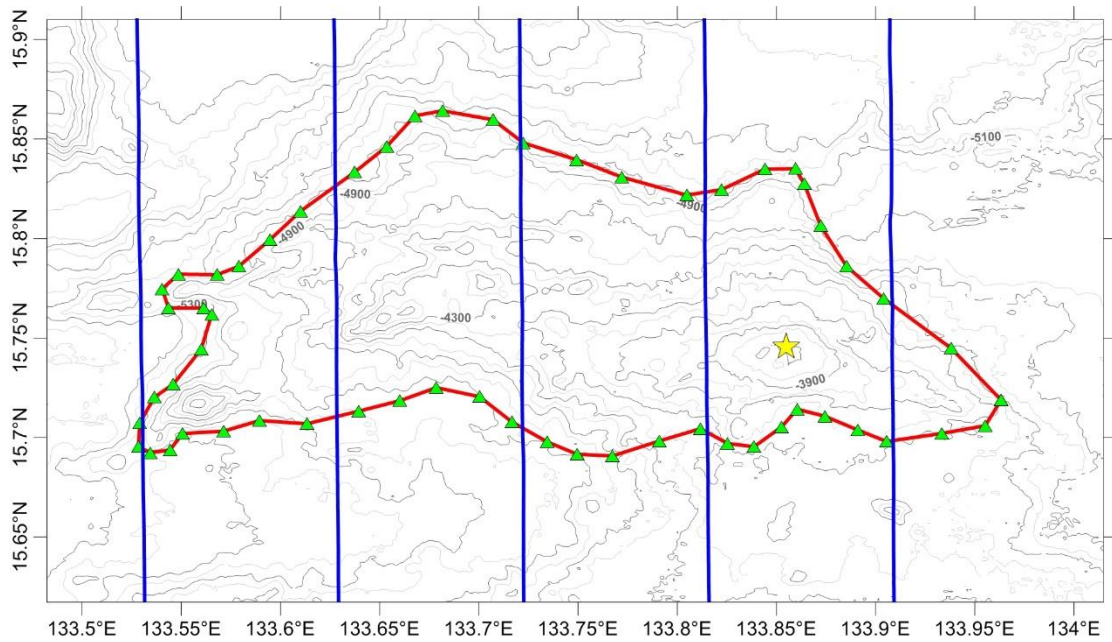
## Figures



**Fig.1** Index map showing the location of Xiazhi Seamount

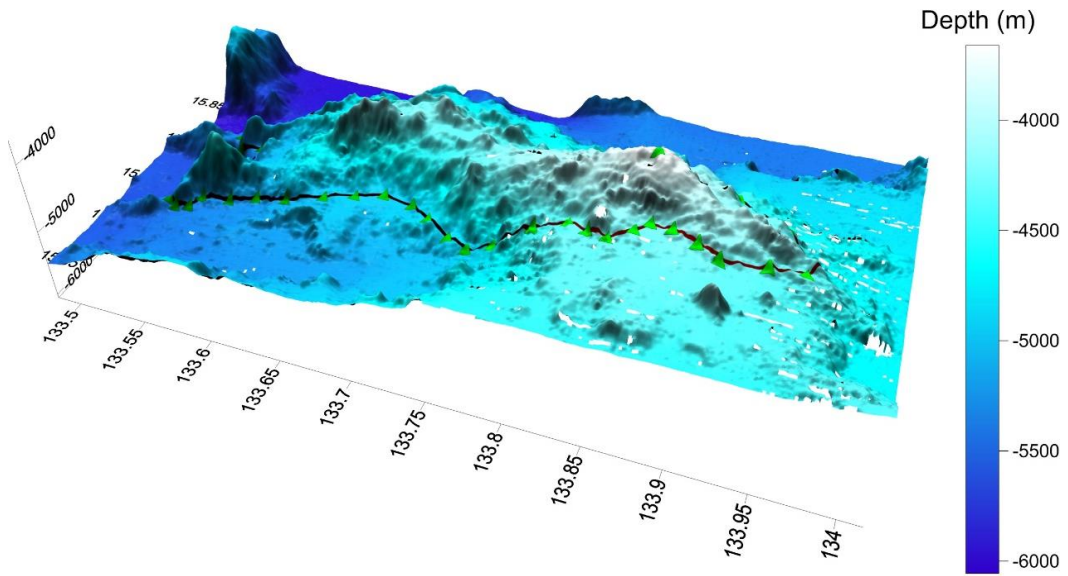


**Fig.2** Bathymetric map of Xiazhi Seamount  
(Contours are in 100 m)

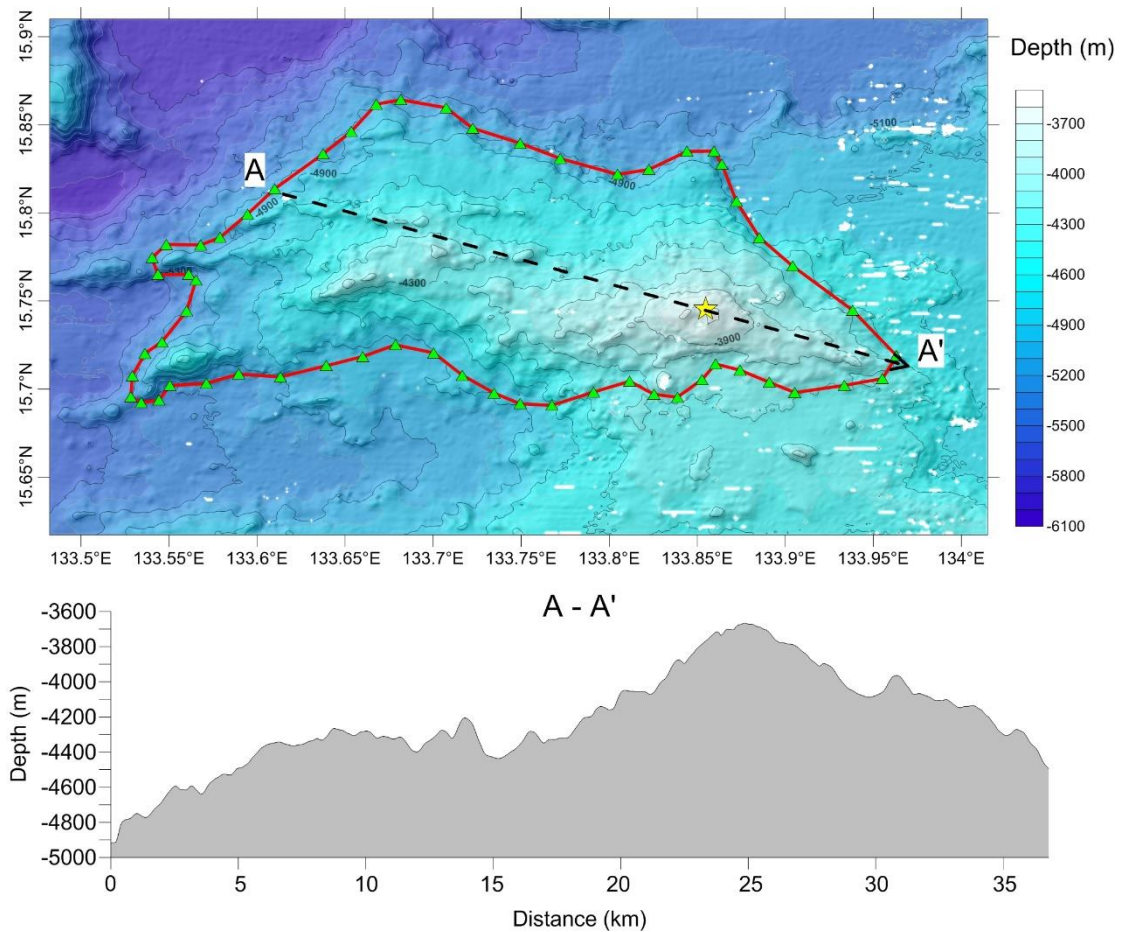


**Fig.3** Bathymetric map of Xiazhi Seamount, showing track lines  
(Contours are in 100 m, blue lines are survey lines)





**Fig.4** 3-D topography map of Xiazhi Seamount



**Fig.5** Bathymetric map and profile of Xiazhi Seamount