

UNDERSEA FEATURE NAME PROPOSAL
(See IHO-IOC Publication B-6 and NOTE overleaf)

Note: The boxes will expand as you fill the form.

Name Proposed:	Xiaoge Hill	Ocean or Sea:	East Pacific Ocean
-----------------------	-------------	----------------------	--------------------

Geometry that best defines the feature (Yes/No) :						
Point	Line	Polygon	Multiple points	Multiple lines*	Multiple polygons*	Combination of geometries*
		Yes				

* Geometry should be clearly distinguished when providing the coordinates below.

	Lat. (e.g. 63°32.6'N)	Long. (e.g. 046°21.3'W)
Coordinates:	1°55.3'N (Top)	103°09.0'W (Top)
	1°53.1'N(Bottom)	103°08.0'W(Bottom)
	1°53.8'N	103°09.8'W
	1°55.3'N	103°10.1'W
	1°56.2'N	103°10.1'W
	1°57.0'N	103°09.3'W
	1°57.3'N	103°08.5'W
	1°56.8'N	103°07.9'W
	1°55.9'N	103°07.9'W
	1°54.8'N	103°07.3'W
	1°53.9'N	103°07.4'W
	1°53.1'N	103°08.0'W

Feature Description:	Maximum Depth:	3400 m	Steepness :	
	Minimum Depth :	2710 m	Shape :	
	Total Relief :	690 m	Dimension/Size :	7.5 km * 5 km

Associated Features:	Xiaoge Hill is located at the East Pacific Ocean and at 300 km northeast to Baiyun Hill, 240 km southeast to Nuoju Knoll. It has an irregular elongated plane shape and extends towards nearly N-S.
-----------------------------	---

Chart/Map References:	Shown Named on Map/Chart:	
	Shown Unnamed on Map/Chart:	GEBCO 5.07
	Within Area of Map/Chart:	

Reason for Choice of Name (if a person, state how associated with the feature to be named):	Xiaoge comes from a poem named Baihua in Shijing·Xiaoya. Shijing is a collection of ancient Chinese Poems from 11 th century B.C. to 6 th century B.C. "The Biao Stream quietly northward flows, moistening fields in which rice grows. My sighs become a song of sorrow when I recall the man I follow." "Xiaoge" is a way to intone with rhythm and sorrow. This poem expresses the woman's sadness and sense of loss because of absence of her husband.
--	--

Discovery Facts:	Discovery Date:	2009
	Discoverer (Individual, Ship):	Chinese R/V Dayang Yihao

Supporting Survey Data, including Track Controls:	Date of Survey:	2009
	Survey Ship:	Chinese R/V Dayang Yihao
	Sounding Equipment:	Multi-beam Echo Sounding System (Seabeam2112)
	Type of Navigation:	GPS
	Estimated Horizontal Accuracy (nm):	≤0.08nm
	Survey Track Spacing:	5 nm
	Supporting material can be submitted as Annex in analog or digital form: see Annex	

Proposer(s):	Name(s):	China Ocean Mineral Resources R&D Association (COMRA)
	Date:	July 1, 2017
	E-mail:	jin@comra.org
	Organization and Address:	Fuxingmenwai Street No.1, Beijing, China China Ocean Mineral Resources R&D Association
	Concurrer (name, e-mail, organization and address):	

Remarks:	The proposal has been reviewed and approved by Sub-Committee on Undersea Feature Names of China Committee on Geographical Names (CCUFN). And the proposal has also been published in "Chinese Gazetteer of Undersea Features on the International Seabed(2016)". No.1, Fuxingmenwai Street, Xicheng District, Beijing, China, 100860 heyunxu@sina.com
-----------------	--

NOTE : This form should be forwarded, when completed :

- a) **If the undersea feature is located inside the external limit of the territorial sea :-**
to your "National Authority for Approval of Undersea Feature Names" (see Publication B-6) or, if this does not exist or is not known, either to the IHO or to the IOC (see addresses below);
- b) **If at least 50 % of the undersea feature is located outside the external limits of the territorial sea :-**
to the IHO or to the IOC, at the following addresses :

International Hydrographic Organization (IHO) 4, Quai Antoine 1er B.P. 445 MC 98011 MONACO CEDEX Principality of MONACO Fax: +377 93 10 81 40 E-mail: info@iho.int Web: www.iho.int	Intergovernmental Oceanographic Commission (IOC) UNESCO Place de Fontenoy 75700 PARIS France Fax: +33 1 45 68 58 12 E-mail: info@unesco.org Web: http://ioc-unesco.org/
---	--

ANNEX

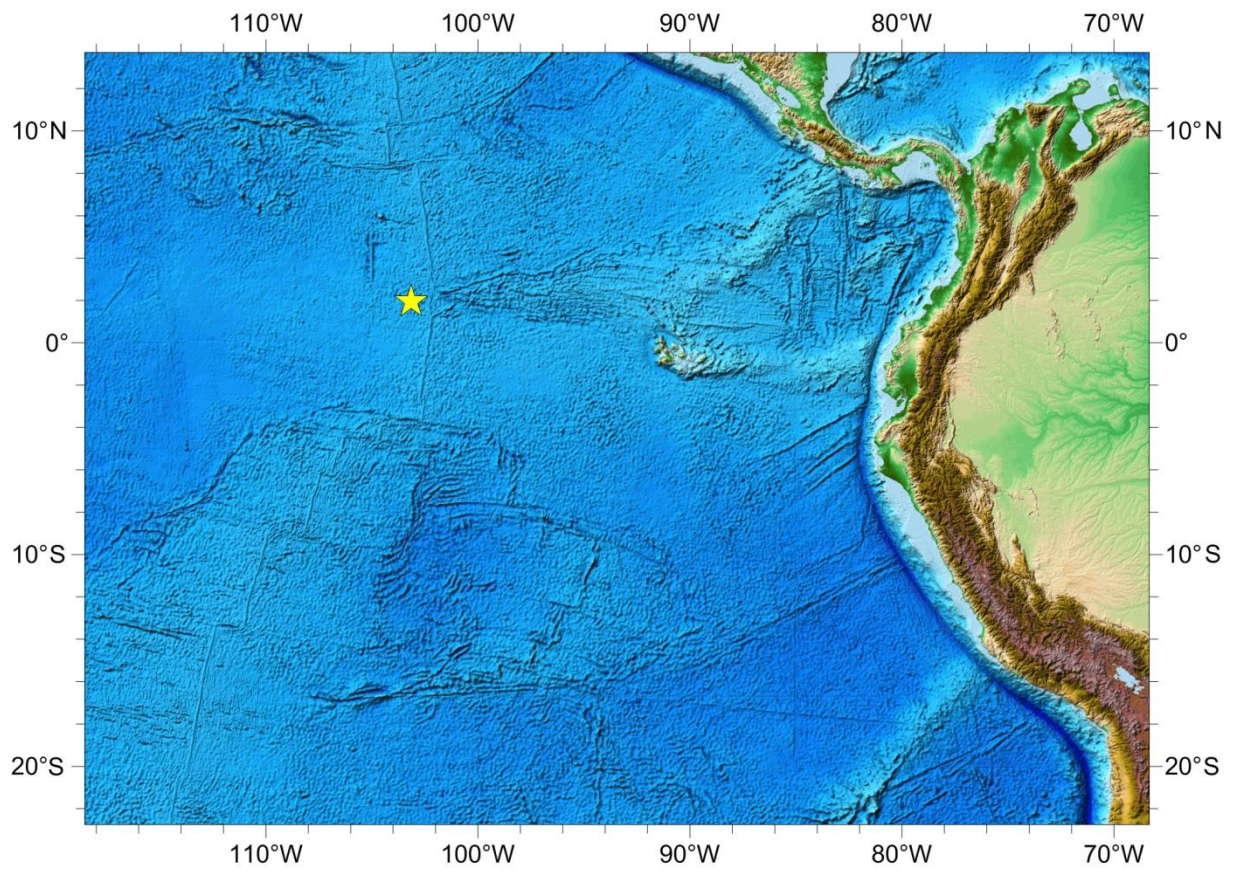


Fig. 1 Location of Xiaoge Hill

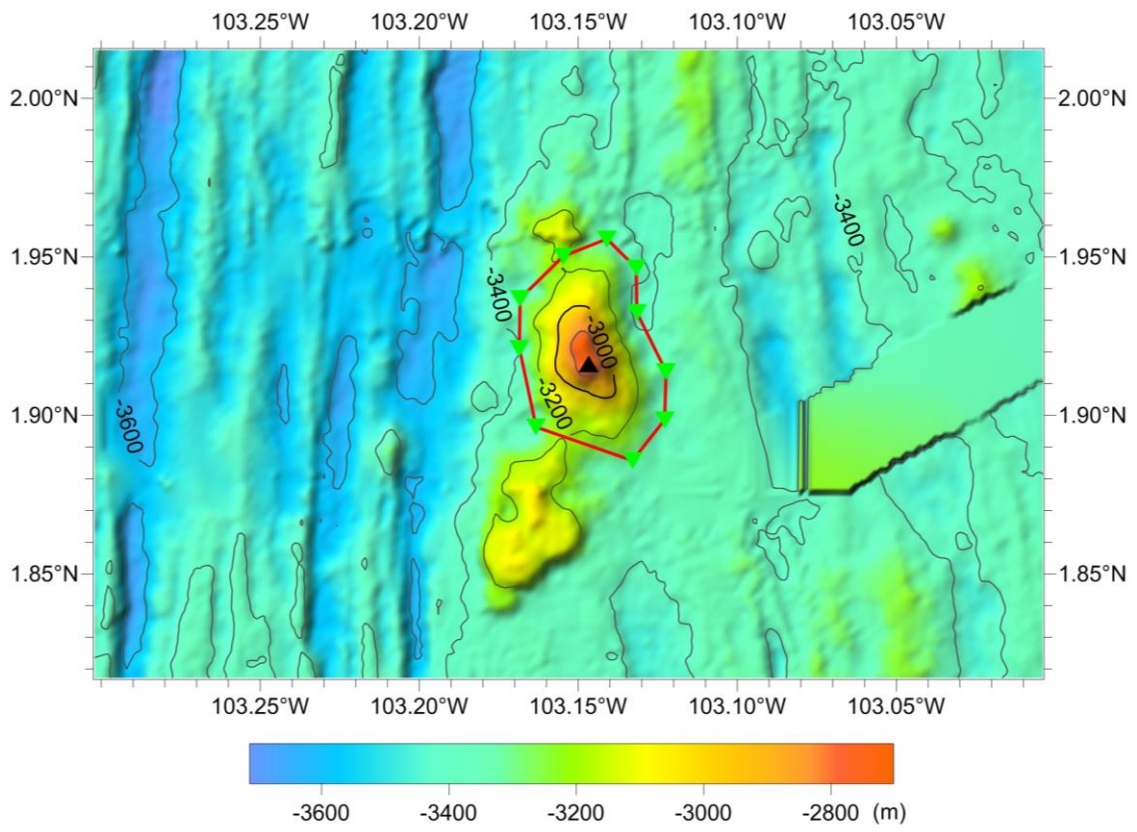


Fig. 2 Bathymetric map of Xiaoge Hill (Contours are in 200 m)

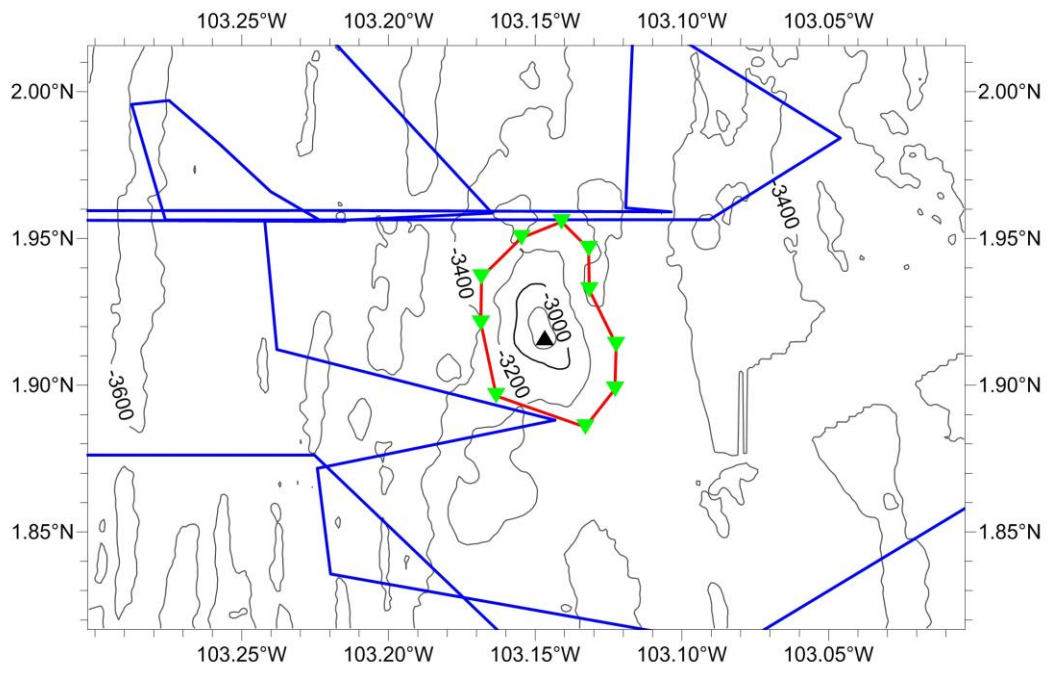


Fig. 3 Bathymetric and survey line map of Xiaoge Hill (Contours are in 200 m, blue ones are survey lines)

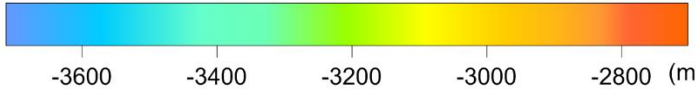
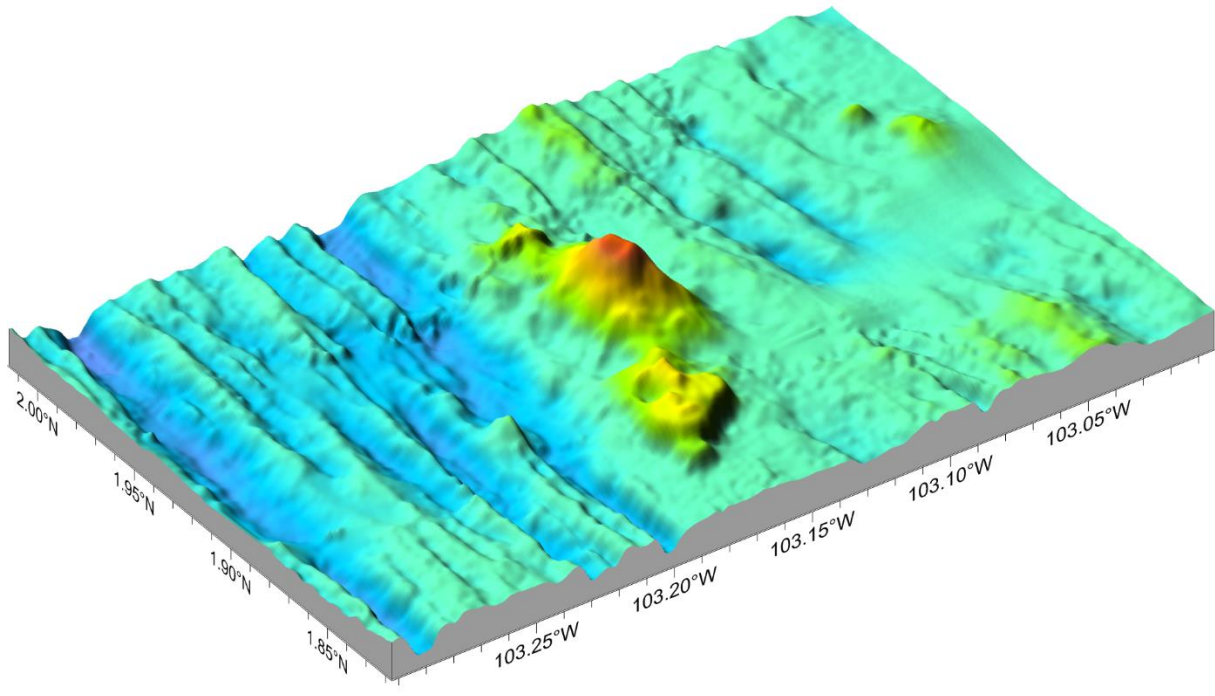


Fig. 4 3-D topography map of Xiaoge Hill

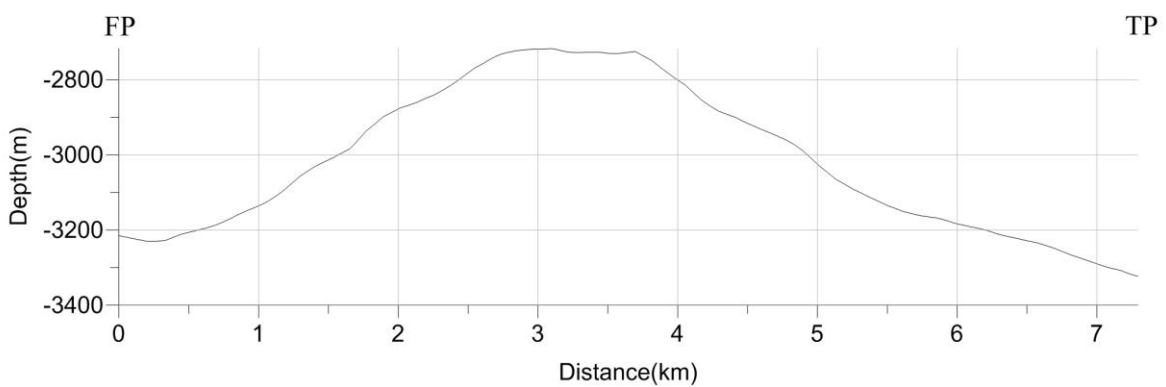
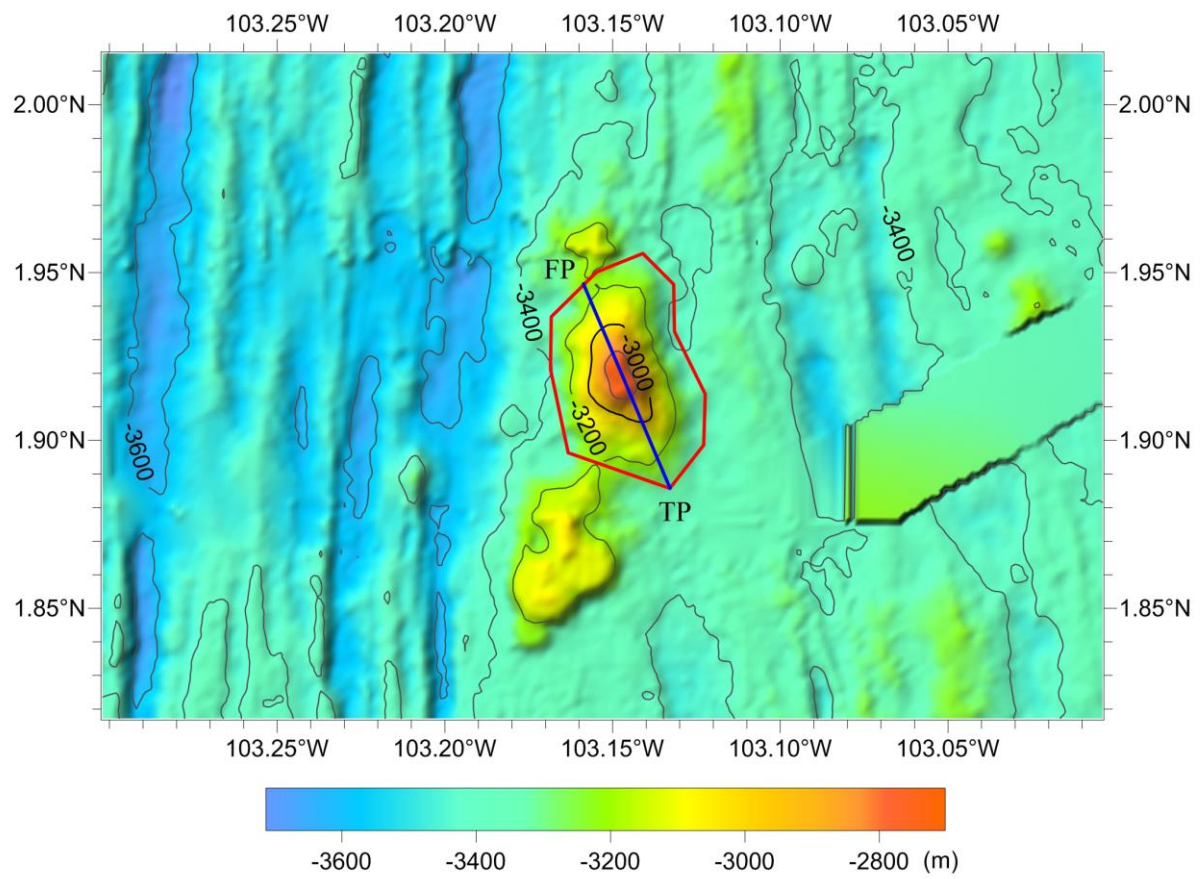


Fig. 5 Profile map of Xiaoge Hill