

UNDERSEA FEATURE NAME PROPOSAL

(See NOTE overleaf)

Note: The boxes will expand as you fill the form.

Name Proposed:	Longnan Seamount	Ocean or Sea:	South China Sea
-----------------------	------------------	----------------------	-----------------

Geometry that best defines the feature (Yes/No) :						
Point	Line	Polygon	Multiple points	Multiple lines*	Multiple polygons*	Combination of geometries*
		Yes				

* Geometry should be clearly distinguished when providing the coordinates below.

	Lat. (e.g. 63°32.6'N)	Long. (e.g. 046°21.3'W)
Coordinates:	13°21.8'N (summit)	114°58.5'E (summit)
	13°25.5'N (bottom)	114°43.5'E (bottom)
	13°27.8'N	114°43.4'E
	13°28.1'N	114°47.0'E
	13°31.0'N	114°54.3'E
	13°30.2'N	114°58.7'E
	13°27.6'N	115°01.1'E
	13°27.2'N	115°03.6'E
	13°25.0'N	115°06.2'E
	13°21.1'N	115°07.3'E
	13°15.3'N	115°05.0'E
	13°14.2'N	115°00.6'E
	13°13.6'N	114°58.2'E
	13°13.7'N	114°53.4'E
	13°15.7'N	114°49.4'E
	13°19.2'N	114°45.2'E
13°22.9'N	114°43.8'E	
13°25.5'N	114°43.5'E	

Feature Description:	Maximum Depth:	4471m	Steepness :	
	Minimum Depth :	513m	Shape :	
	Total Relief :	3958m	Dimension/Size :	45km × 30km

Associated Features:	The seamount lies in the middle of South China Sea Basin. This seamount extends from southeast to northwest.
-----------------------------	--

Chart/Map References:	Shown Named on Map/Chart:	
	Shown Unnamed on Map/Chart:	GEBCO 5.06
	Within Area of Map/Chart:	

Reason for Choice of Name (if a person, state how associated with the feature to be named):	The Chinese government named the seamount as Longnan Seamount in 1986. Longnan means this seamount is to the south of Longtou Seamount. In 2005, China carried out multi-beam measurement for this seamount again.
--	--

Discovery Facts:	Discovery Date:	1980-1982
	Discoverer (Individual, Ship):	R/V HaiyangErhao

Supporting Survey Data, including Track Controls:	Date of Survey:	Mar-Sep 2005
	Survey Ship:	R/V HaiyangSihao
	Sounding Equipment:	Multi-beamsounding system (Seabeam2112)
	Type of Navigation:	DGPS
	Estimated Horizontal Accuracy (nm):	<=0.08 nm
	Survey Track Spacing:	5nm
	Supporting material can be submitted as Annex in analog or digital form.	

Proposer(s):	Name(s):	Zhu Benduo, Huang Wenxing
	Date:	2016.8.10
	E-mail:	Zhubenduo@163.com
	Organization and Address:	Guangzhou Marine Geological Survey, China Geological Survey. No.188 Guanghai Rd., Huangpu District, Guangzhou, China.

Remarks:	The proposal has been reviewed and approved by Sub-Committee on Undersea Feature Names of China Committee on Geographical Names (CCUFN) No.1 Fuxingmenwai Ave. Beijing 100860 heyunxu@sina.com
-----------------	--

Attachment

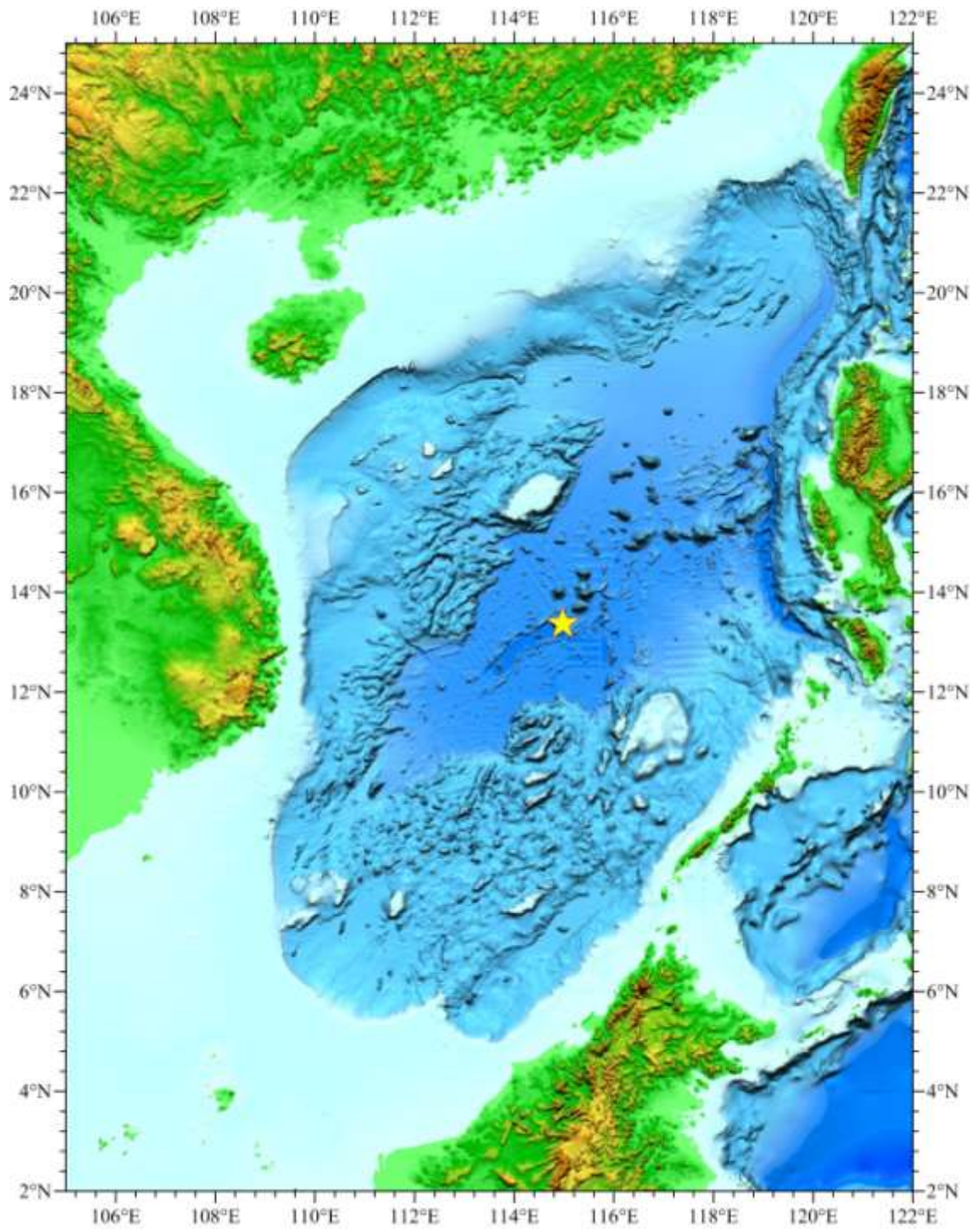


Fig.1 Index map showing the location of the Longnan Seamount

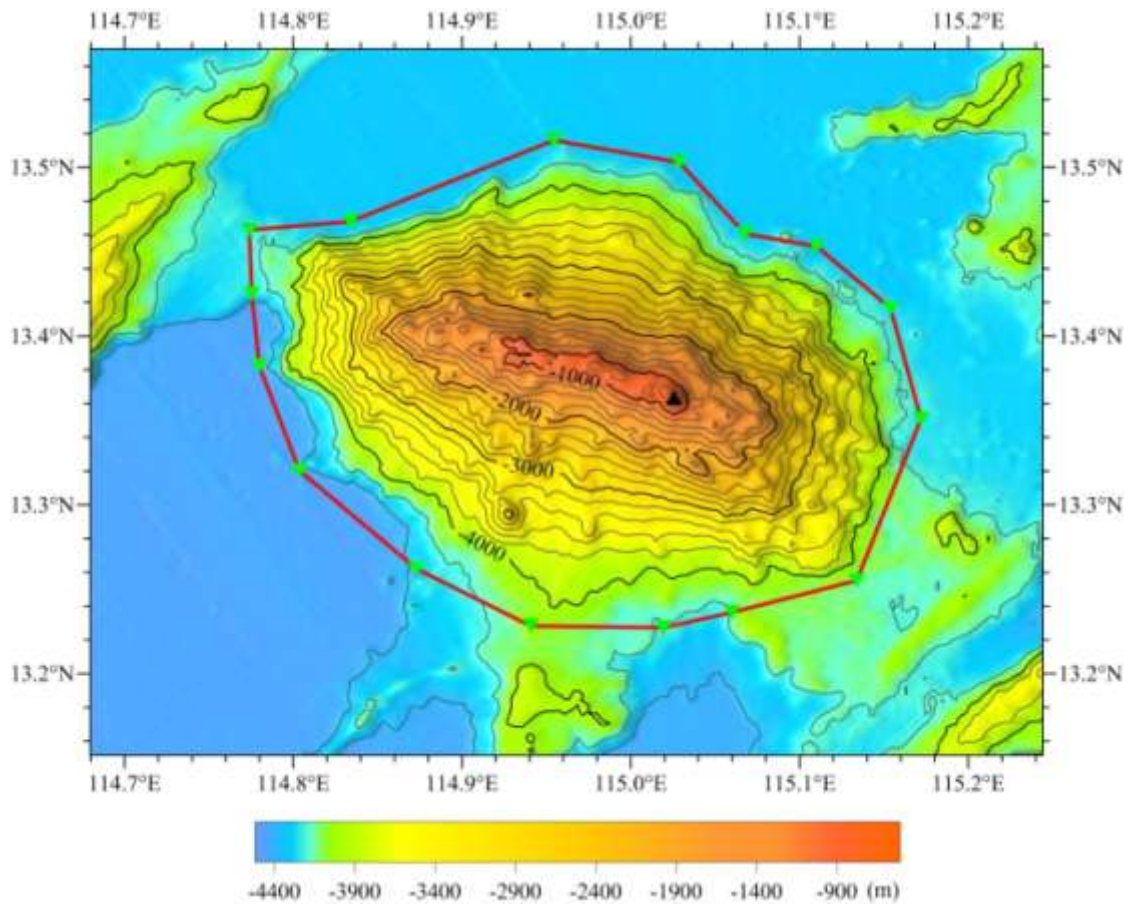


Fig.2 Bathymetric map of the Longnan Seamount(Contours are in 200 m)

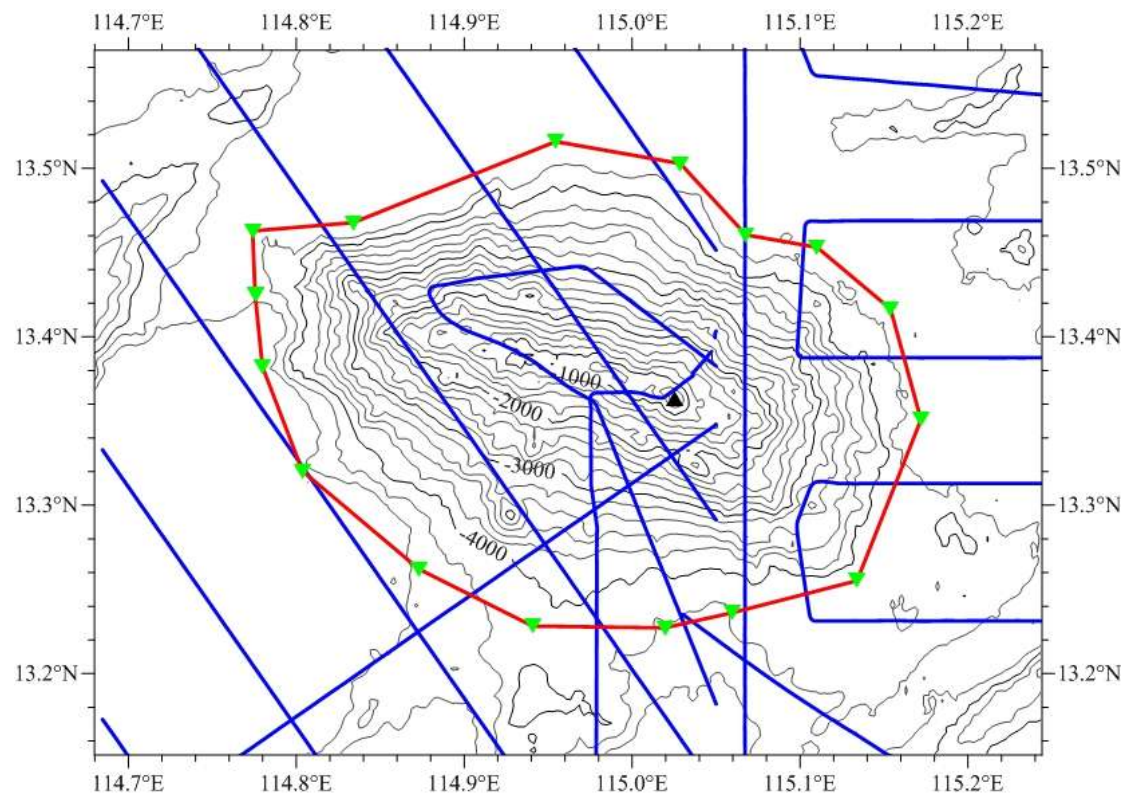


Fig.3 Bathymetric map of the Longnan Seamount overlain with track lines (Contours are in 200 m, blue lines for the track lines)

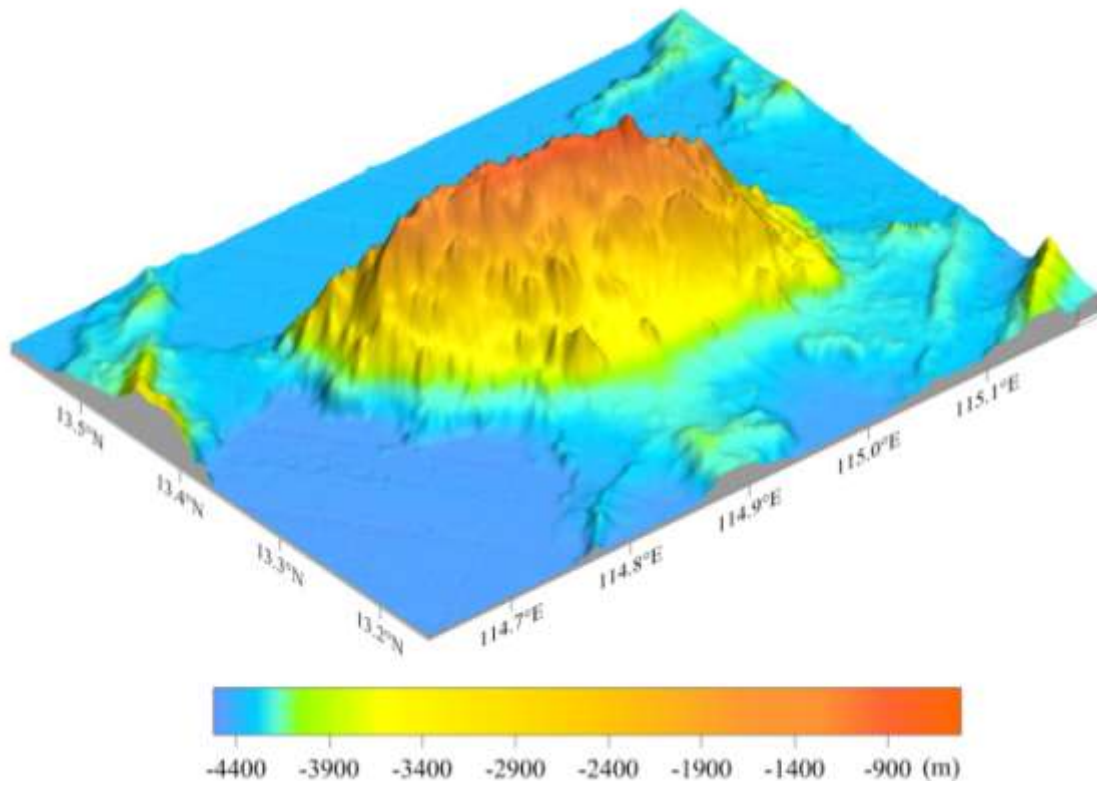


Fig.4 3-D bathymetric map of the Longnan Seamount

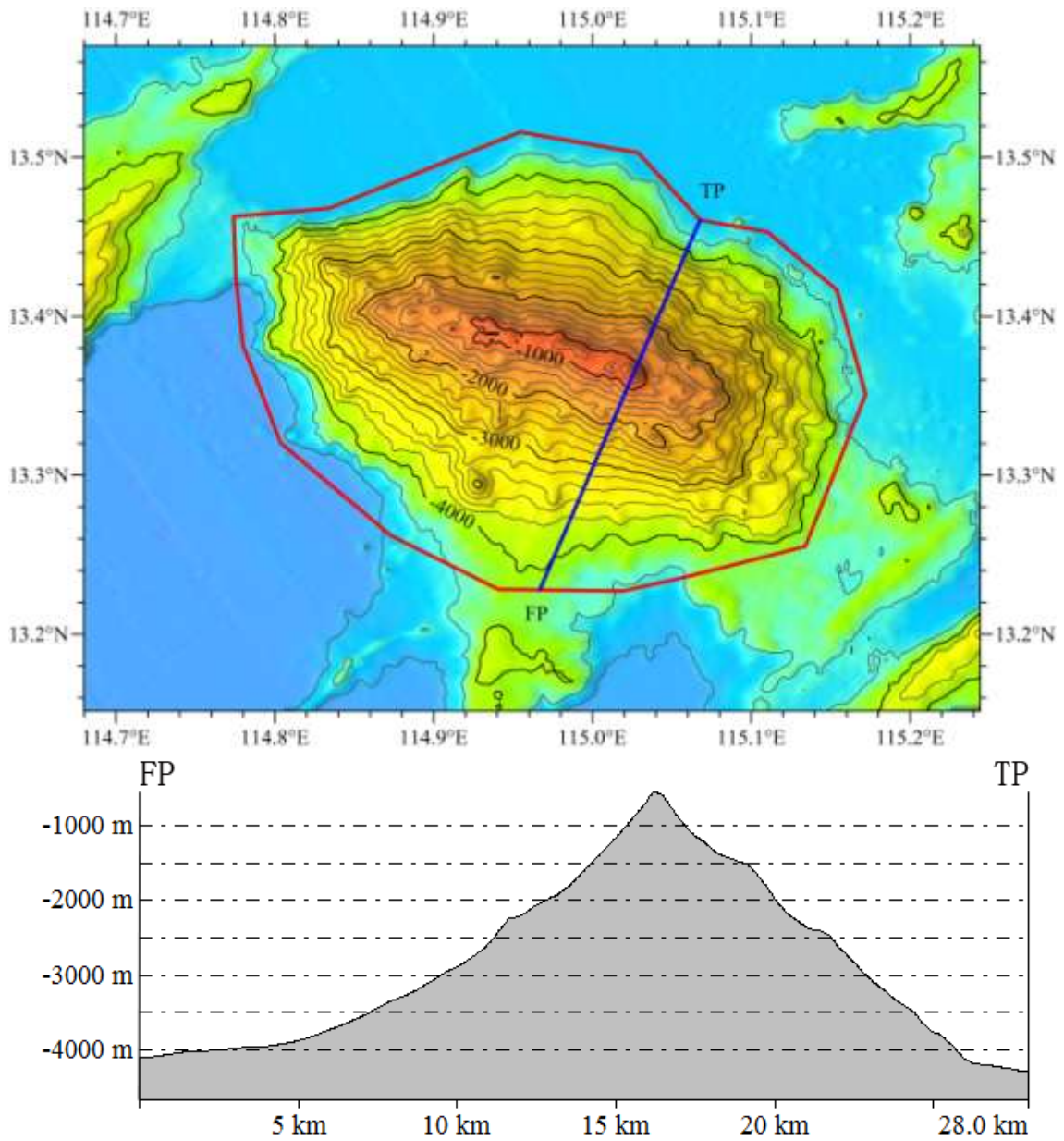


Fig.5 Profile map of the Longnan Seamount