

UNDERSEA FEATURE NAME PROPOSAL

(See NOTE overleaf)

Note: The boxes will expand as you fill the form.

Name Proposed:	Wangheng Hill	Ocean or Sea:	South China Sea
-----------------------	---------------	----------------------	-----------------

Geometry that best defines the feature (Yes/No) :						
Point	Line	Polygon	Multiple points	Multiple lines*	Multiple polygons*	Combination of geometries*
		Yes				

* Geometry should be clearly distinguished when providing the coordinates below.

	Lat. (e.g. 63°32.6'N)	Long. (e.g. 046°21.3'W)
Coordinates:	07°20.7'N (summit)	111°21.3'E (summit)
	07°23.5'N (bottom)	111°25.2'E (bottom)
	07°22.3'N	111°25.3'E
	07°22.1'N	111°26.4'E
	07°19.3'N	111°26.5'E
	07°16.8'N	111°23.5'E
	07°16.6'N	111°21.5'E
	07°17.1'N	111°19.3'E
	07°19.8'N	111°16.5'E
	07°21.8'N	111°17.5'E
	07°22.0'N	111°18.9'E
	07°22.9'N	111°21.0'E
	07°24.0'N	111°21.8'E
	07°24.1'N	111°22.4'E
	07°23.5'N	111°25.2'E

Feature Description:	Maximum Depth:	1977m	Steepness :	
	Minimum Depth :	1653m	Shape :	
	Total Relief :	324m	Dimension/Size :	18km × 14km

Associated Features:	Wangheng Hill lies in the southern South China Sea. The shape of this hill is irregular.
-----------------------------	--

Chart/Map References:	Shown Named on Map/Chart:	
	Shown Unnamed on Map/Chart:	GEBCO 5.06
	Within Area of Map/Chart:	

Reason for Choice of Name (if a person, state how associated with the feature to be named):	Wangheng (14 th -15 th century) was a Chinese navigator in the Ming dynasty of China. He took several voyages with Zhenghe's fleet to the South China Sea. This hill is named after Wangheng to commemorate his great contribution in sailing history.
--	--

Discovery Facts:	Discovery Date:	2000
	Discoverer (Individual, Ship):	R/V Haiyang Sihao

Supporting Survey Data, including	Date of Survey:	2000-2001
--	-----------------	-----------

Track Controls:	Survey Ship:	R/V Haiyang Sihao
	Sounding Equipment:	Multi-beam sounding system (Seabeam2112)
	Type of Navigation:	DGPS
	Estimated Horizontal Accuracy (nm):	<=0.08 nm
	Survey Track Spacing:	4.2nm
	Supporting material can be submitted as Annex in analog or digital form.	

Proposer(s):	Name(s):	Zhu Benduo, Huang Wenxing
	Date:	2016.8.10
	E-mail:	Zhubenduo@163.com
	Organization and Address:	Guangzhou Marine Geological Survey, China Geological Survey. No.188 Guanghai Rd., Huangpu District, Guangzhou, China.

Remarks:	The proposal has been reviewed and approved by Sub-Committee on Undersea Feature Names of China Committee on Geographical Names (CCUFN) No.1 Fuxingmenwai Ave. Beijing 100860 heyunxu@sina.com
-----------------	--

Attachment

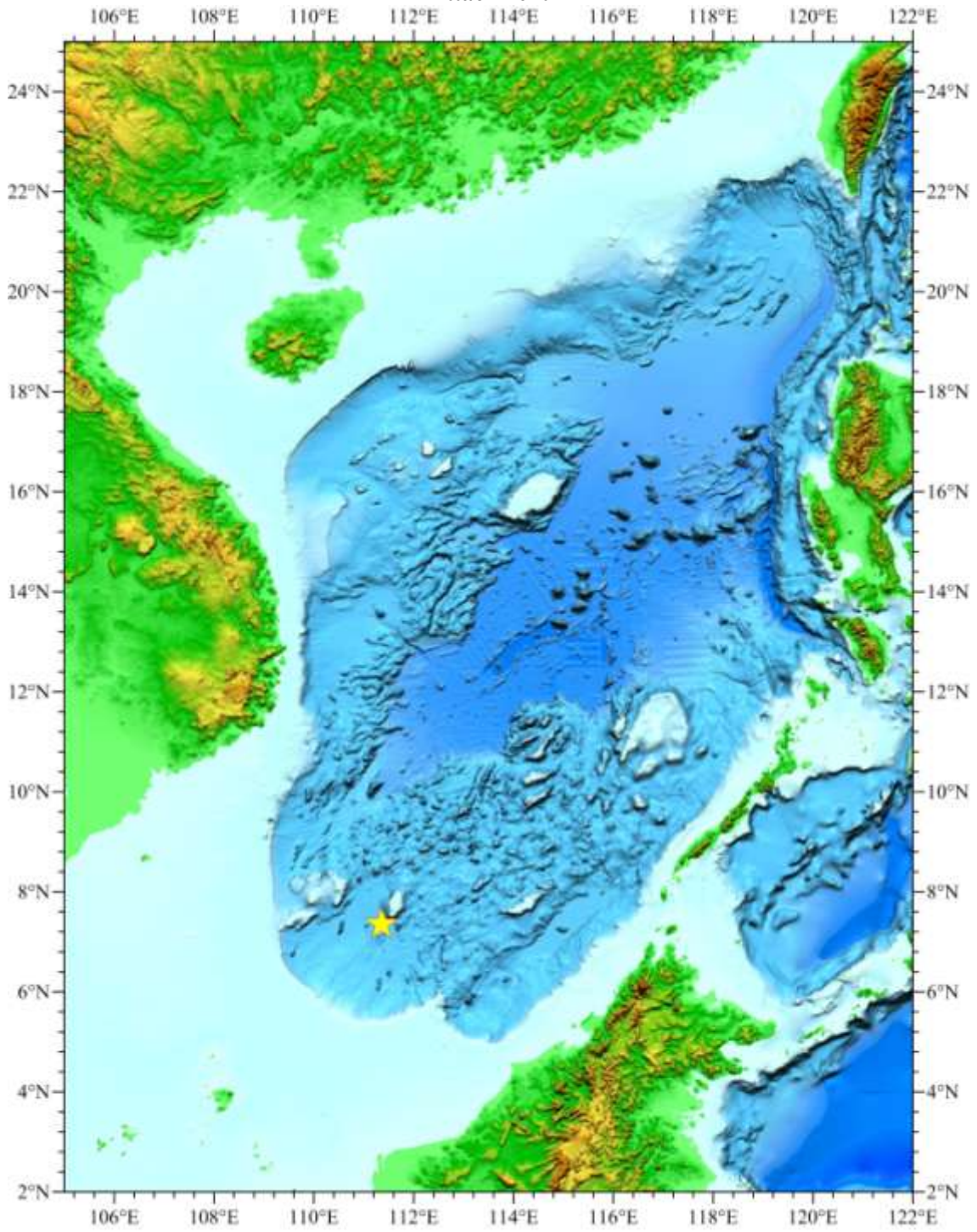


Fig.1 Index map showing the location of the Wangheng Hill

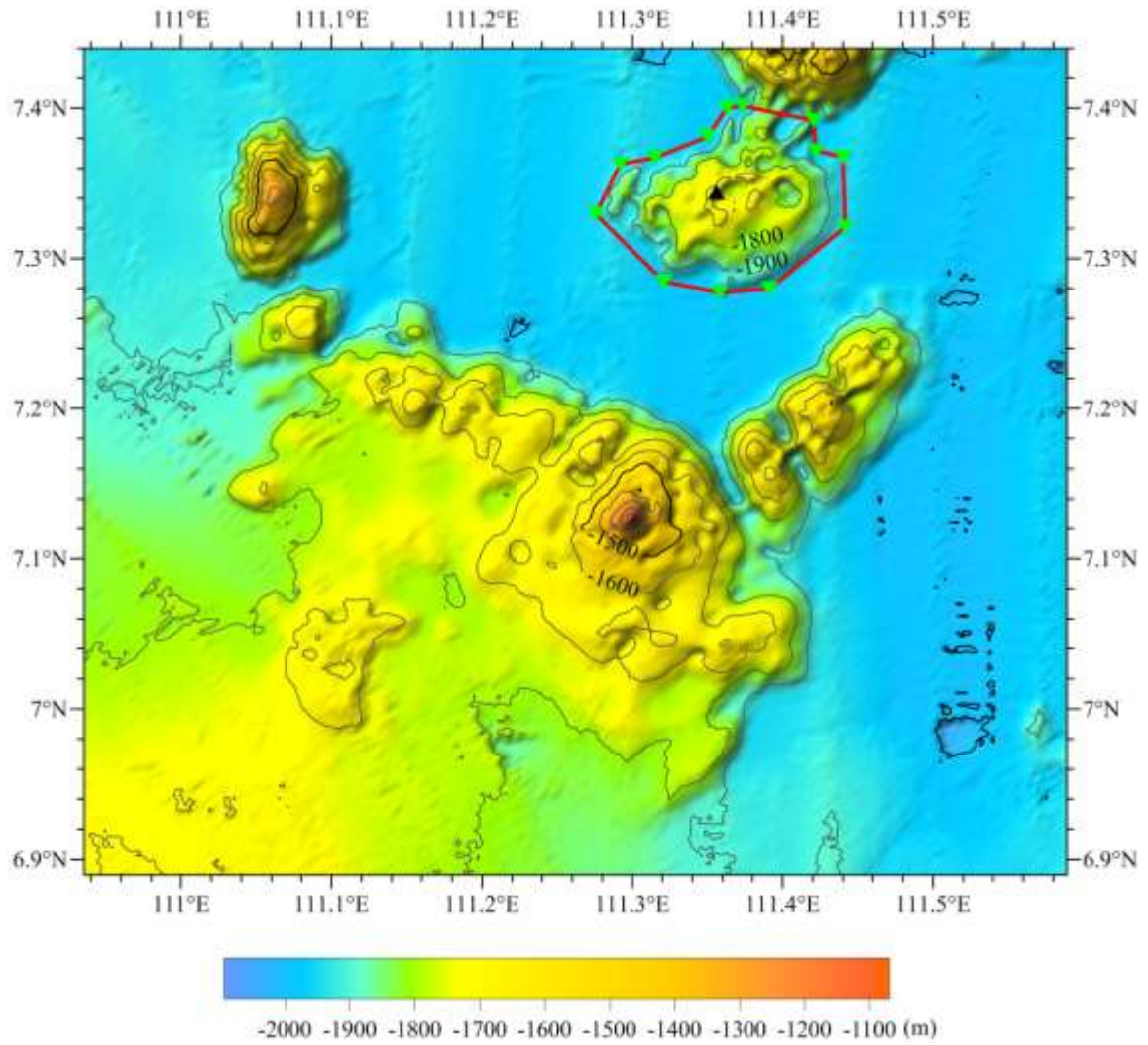


Fig.2 Bathymetric map of the Wangheng Hill (Contours are in 100m)

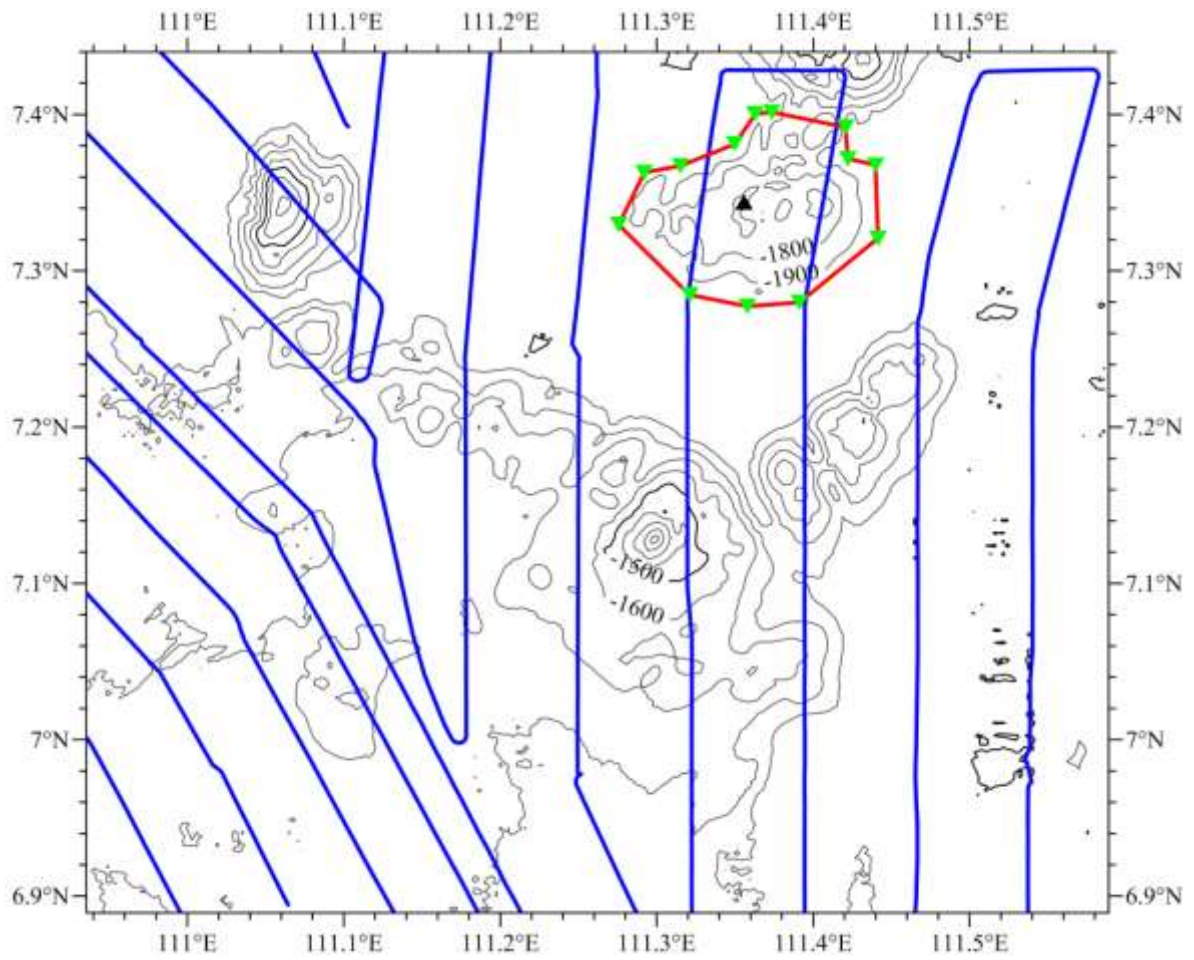


Fig.3 Bathymetric map of the Wangheng Hill overlain with track lines
(Contours are in 100 m, blue lines for the track lines)

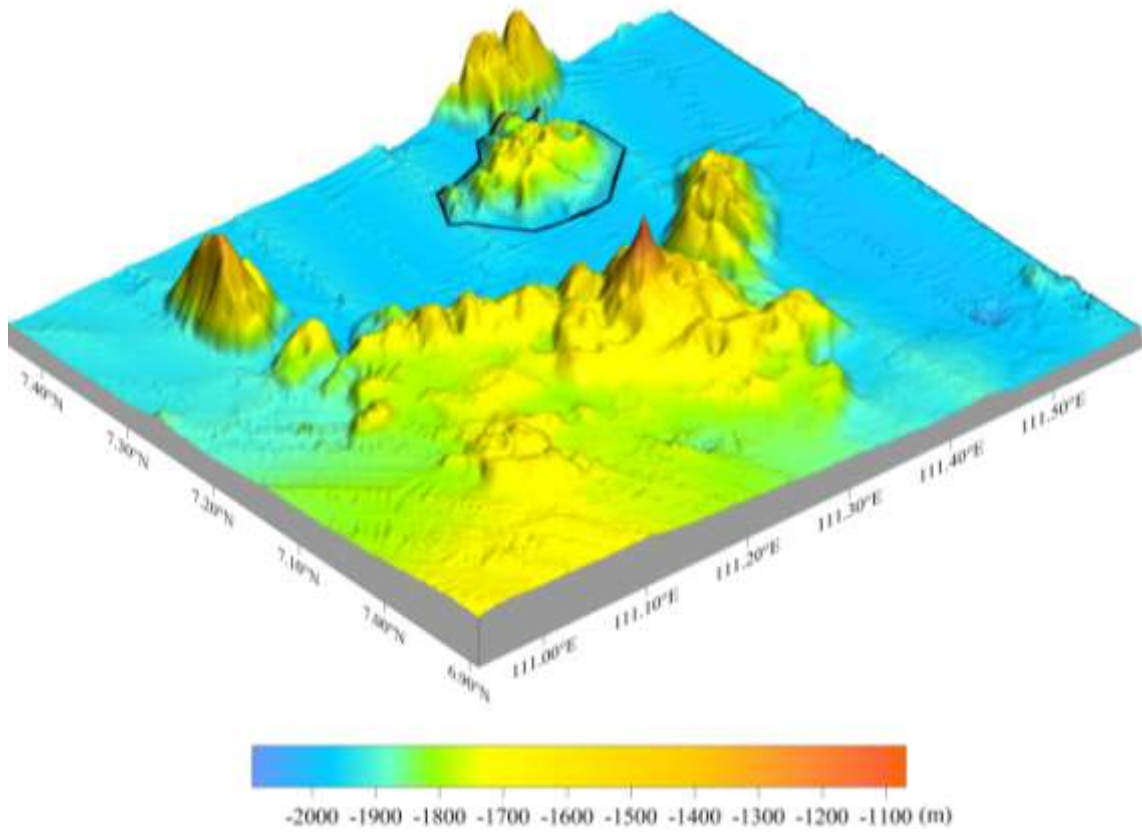


Fig.4 3-D bathymetric map of the Wangheng Hill

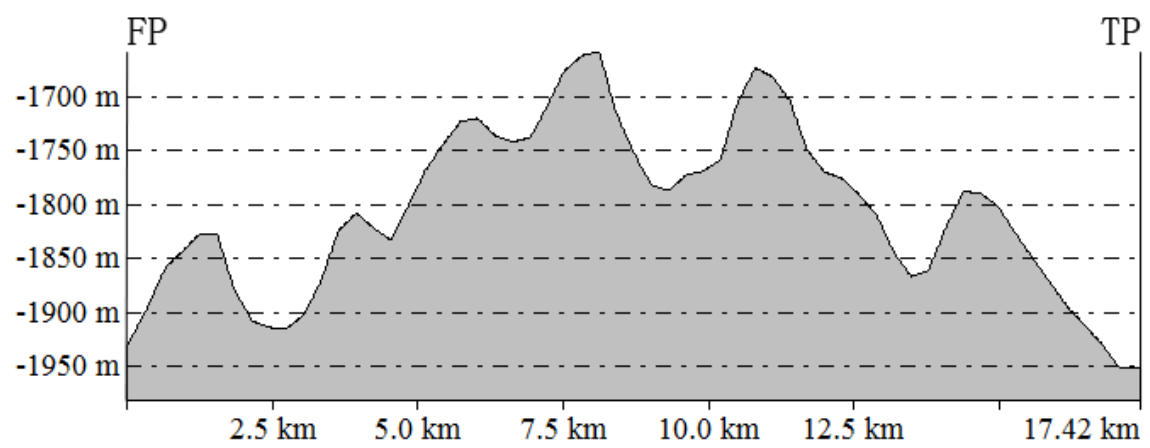
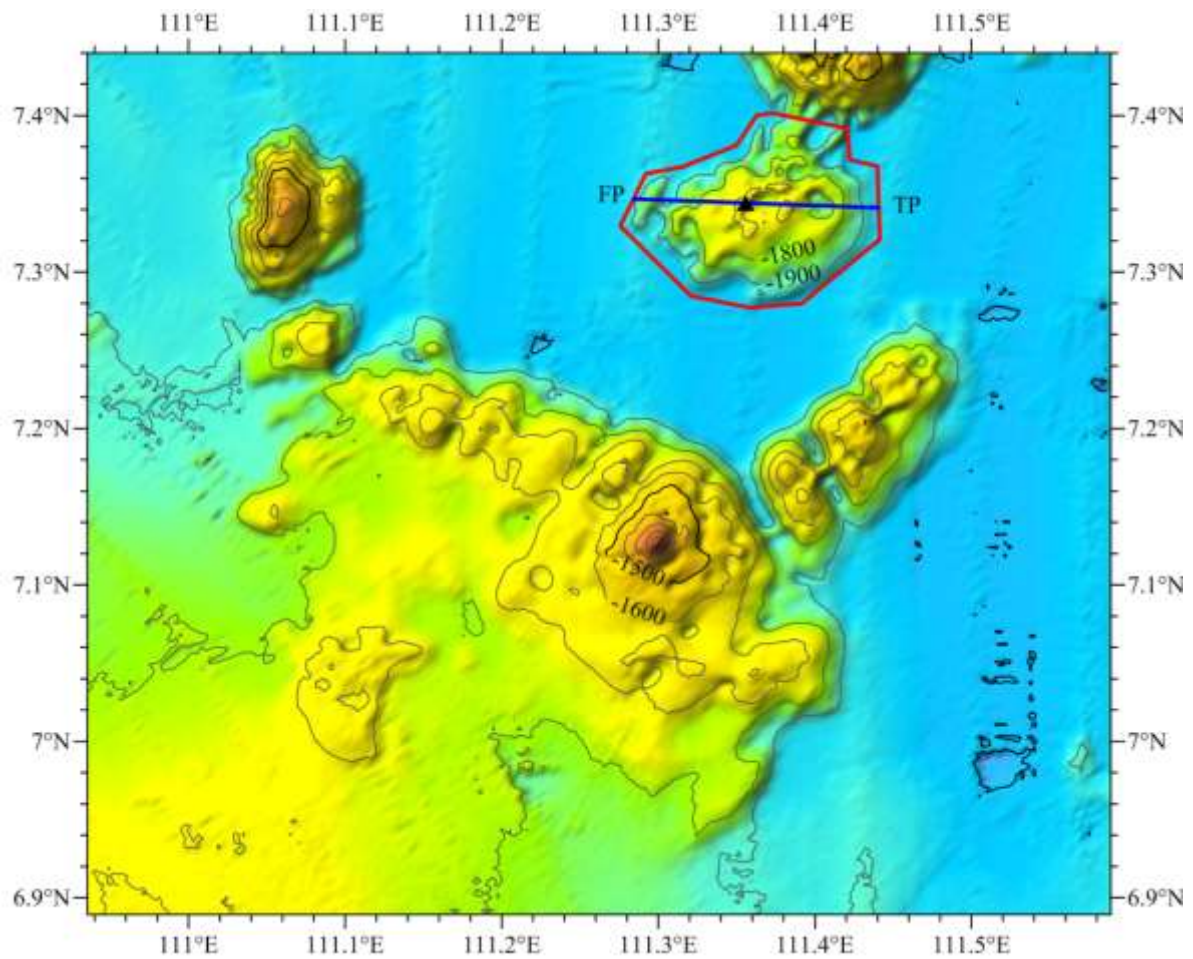


Fig.5 Profile map of the Wangheng Hill