



Republic of Palau TERRITORY AND BOUNDARY

Task Force

Authorized by Executive Order No. 340 dated June, 17 2013

Dear Sir,

The Republic of Palau kindly submits several proposals for the naming of undersea features to be considered at SCUFN 31. Your consideration and support of our proposals is highly appreciated.

The Republic of Palau comprises of about 350 islands and islets. Most of these surmount the Palau-Kyushu Ridge (also known as the Kyushu-Palau Ridge). The largest island is Babeldaob, and the northernmost one is Kayangel (**Fig. 1**). The proposed undersea feature names relate to the features in the Palau-Kyushu Ridge.

In total, the Republic of Palau is submitting 40 proposals. The 40 proposals include 14 BASINS, 16 RIDGES, 3 PEAKS, and 7 SEAMOUNTS (**Fig. 2**), most of which are the undersea features located within the Kobayashi Basin and Ridge Province (**Fig. 1**). All undersea feature names are relevant to Palau’s geography, indigenous fish, and indigenous birds and bats, following the primary naming rule written in “Standardization of Undersea Feature Names”, Publication B-6.

The Japanese government generously provided parts of the bathymetric data (**Fig. 3**). **Table 1** list the source and relevant information of multi-beam bathymetric data used for Palau’s undersea feature name proposals.

Table 1. Source and relevant information of primary multi-beam bathymetric data used for Palau's undersea feature name proposals

Cruise ID	Embark	Arrival	Days	Ship	Navigation Method	Navigation Accuracy	Geodetic Datum	Muluti-beam system	Data source
FY2006_CSS13	2006/12/4	2006/12/20	17	S/V Shoyo	GPS without SA	26 m	WGS84	Seabeam 2112	HODJ
FY2007_CSS3	2007/5/17	2007/6/7	22	S/V Takuyo	GPS without SA	26 m	WGS84	Seabeam 2112	HODJ
FY2007_CSS4	2007/6/6	2007/6/25	20	S/V Shoyo	GPS without SA	26 m	WGS84	Seabeam 2112	HODJ
FY2008_CSS2	2008/4/16	2008/5/8	23	S/V Shoyo	GPS without SA	26 m	WGS84	Seabeam 2112	HODJ

HODJ = Hydrographic and Oceanographic Department of Japan

The 3 PEAKS and 7 SEAMOUNTS are named after mountain in each state in the Babeldaob Island (**Fig. 4, Table 2**). The 14 BASINS are named after Palau’s indigenous fishes, and 16 RIDGES after Palau’s indigenous birds and a bat (**Table 2**).

Task Force Officers

Chairman

Rebluud Kesolei

Members

Ramon Rechebei

David K Idip Jr.

Takamatsu Emesiochel

Nick Ngwal

John Gaylord

Advisor

Jerrold E. Knight



Republic of Palau TERRITORY AND BOUNDARY Task Force

Authorized by Executive Order No. 340 dated June, 17 2013

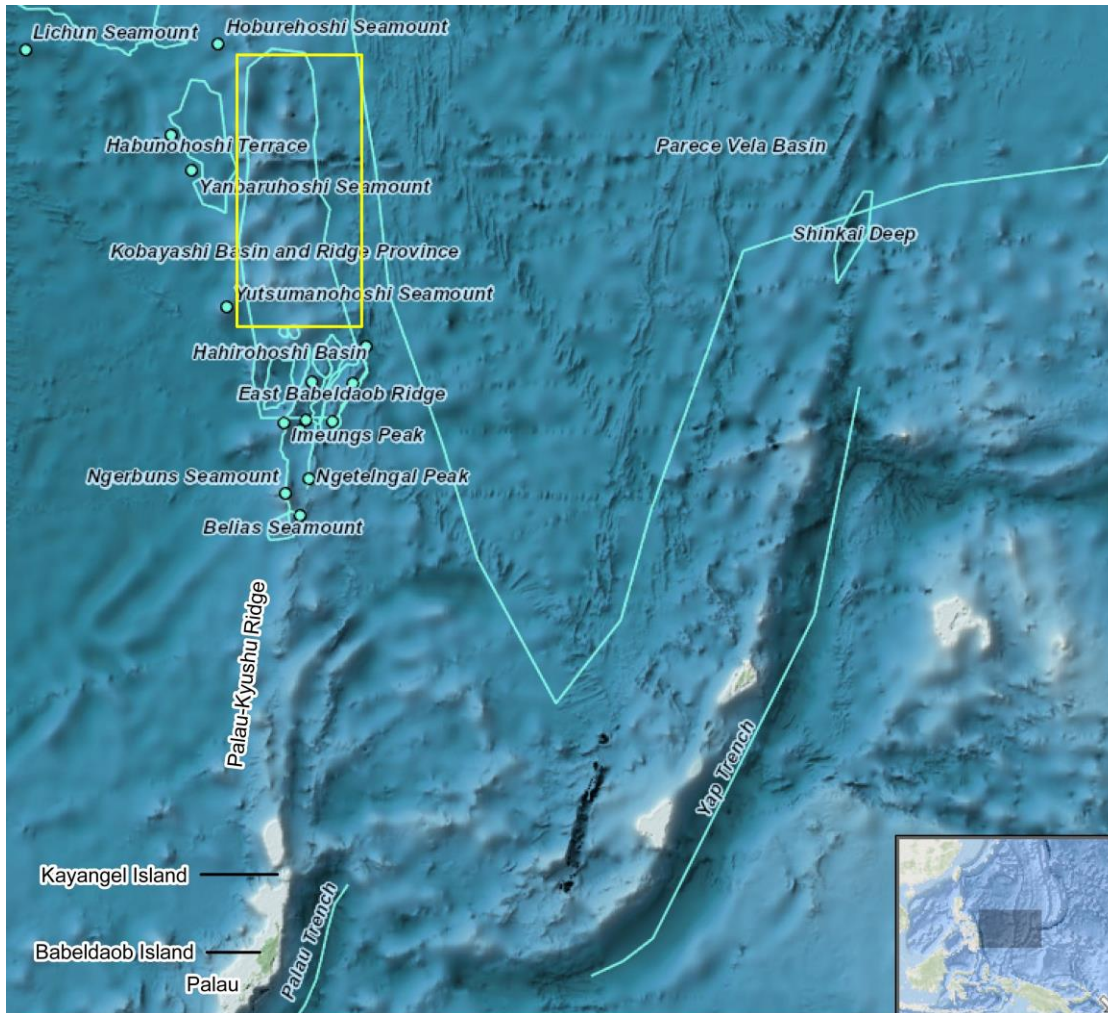


Fig. 1. Index map showing the location of the Republic of Palau. The yellow box indicates the approximate location of Figs. 2 and 3.

Task Force Officers

Chairman

Rebluud Kesolei

Members

Ramon Rechebei

David K Idip Jr.

Takamatsu Emesiochel

Nick Ngwal

John Gaylord

Advisor

Jerrold E. Knight

Republic of Palau TERRITORY AND BOUNDARY Task Force

Authorized by Executive Order No. 340 dated June, 17 2013

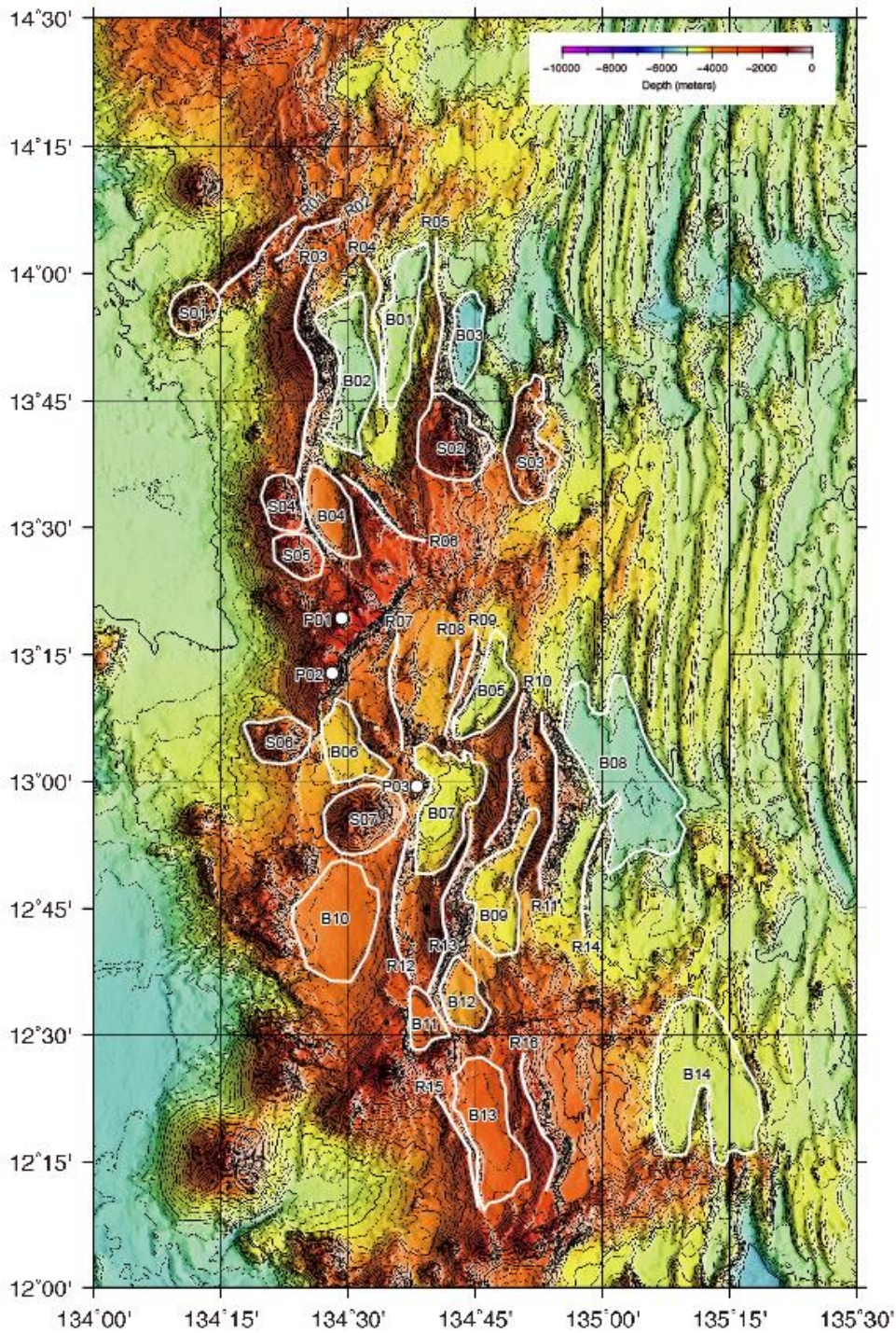


Fig. 2. Bathymetric map showing the proposed undersea feature names (see Table 2) by the Republic of Palau. Contours intervals are 100 m (see Fig. 3 for clearer contour image).

Task Force Officers

Chairman
Rebluud Kesolei

Members
Ramon Rechebei
David K Idip Jr.
Takamatsu Emesiochel
Nick Ngwal
John Gaylord

Advisor
Jerrold E. Knight



Republic of Palau
TERRITORY AND BOUNDARY
Task Force

Authorized by Executive Order No. 340 dated June, 17 2013

Task Force Officers

Chairman
 Rebluud Kesolei

Members
 Ramon Rechebei
 David K Idip Jr.
 Takamatsu Emesiochel
 Nick Ngwal
 John Gaylord

Advisor
 Jerrold E. Knight

Table 2. List of proposed undersea feature names as keyed to Figure 2

ID in Figure 2	Specific Name	Generic Name	Reason for choice of the name
B01	Baungor	BASIN	Palau's indgenous fish
B02	Bsall	BASIN	Palau's indgenous fish
B03	Berdebed	BASIN	Palau's indgenous fish
B04	Bsodech	BASIN	Palau's indgenous fish
B05	Bsukel	BASIN	Palau's indgenous fish
B06	Chedui	BASIN	Palau's indgenous fish
B07	Chelbesoi	BASIN	Palau's indgenous fish
B08	Chelbuil	BASIN	Palau's indgenous fish
B09	Chetitel	BASIN	Palau's indgenous fish
B10	Katuu Tiau	BASIN	Palau's indgenous fish
B11	Mokas	BASIN	Palau's indgenous fish
B12	Merebas	BASIN	Palau's indgenous fish
B13	Ochaieo	BASIN	Palau's indgenous fish
B14	Yaus	BASIN	Palau's indgenous fish
R01	Belochel	RIDGE	Palau's indgenous bird
R02	Biib	RIDGE	Palau's indgenous bird
R03	Charmbedel	RIDGE	Palau's indgenous bird
R04	Charmuderenges	RIDGE	Palau's indgenous bird
R05	Chebacheb	RIDGE	Palau's indgenous bird
R06	Chermelachull	RIDGE	Palau's indgenous bird
R07	Chesisebasech	RIDGE	Palau's indgenous bird
R08	Chesisebangiau	RIDGE	Palau's indgenous bird
R09	Chersoches	RIDGE	Palau's indgenous bird
R10	Kedam	RIDGE	Palau's indgenous bird
R11	Dudek	RIDGE	Palau's indgenous bird
R12	Sechosech	RIDGE	Palau's indgenous bird
R13	Laiib	RIDGE	Palau's indgenous bird
R14	Chesisualik	RIDGE	Palau's indgenous bat
R15	Ulerratel	RIDGE	Palau's indgenous bird
R16	Uek	RIDGE	Palau's indgenous bird
P01	Roischesar	PEAK	Mountain name in each state in the Babeldaob Island
P02	Roisersuul	PEAK	Mountain name in each state in the Babeldaob Island
P03	Malk	PEAK	Mountain name in each state in the Babeldaob Island
S01	Eldoech	SEAMOUNT	Mountain name in each state in the Babeldaob Island
S02	Ngellitel	SEAMOUNT	Mountain name in each state in the Babeldaob Island
S03	Roismelech	SEAMOUNT	Mountain name in each state in the Babeldaob Island
S04	Ngertebechel	SEAMOUNT	Mountain name in each state in the Babeldaob Island
S05	Chetiruir	SEAMOUNT	Mountain name in each state in the Babeldaob Island
S06	Kelbael	SEAMOUNT	Mountain name in each state in the Babeldaob Island
S07	Roisemiangel	SEAMOUNT	Mountain name in each state in the Babeldaob Island

Republic of Palau TERRITORY AND BOUNDARY

Task Force

Authorized by Executive Order No. 340 dated June, 17 2013

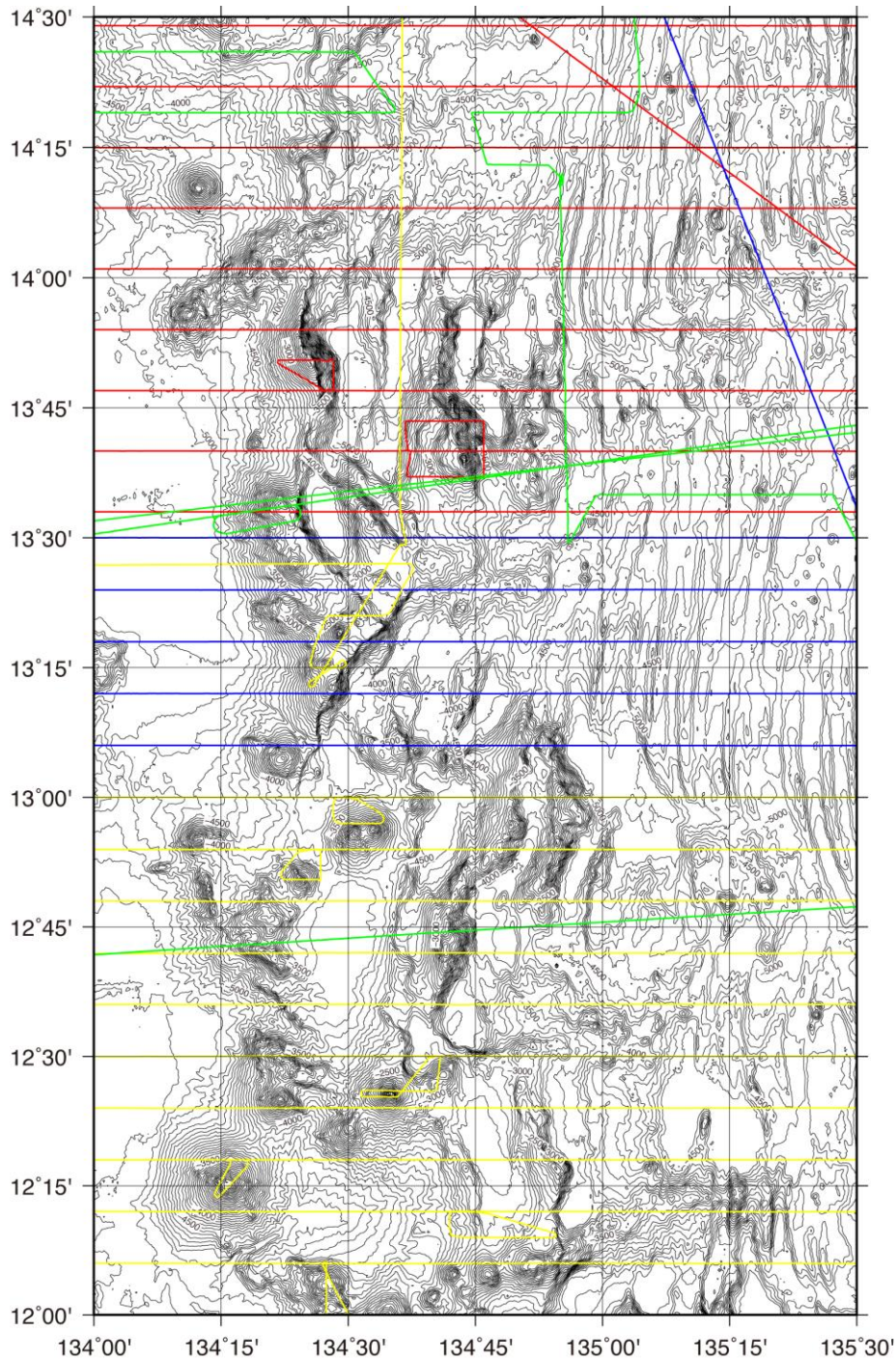


Fig. 3. Bathymetric map showing the cruise track lines used to reconstruct bathymetry data. Contour intervals are 100 m. Red = track line for FY2006_CSS13, Blue = FY2007_CSS3, Yellow = FY2007_CSS4, and Green = FY2008_CSS2 cruises by HODJ (see Table 1).

Task Force Officers

Chairman
Rebluud Kesolei

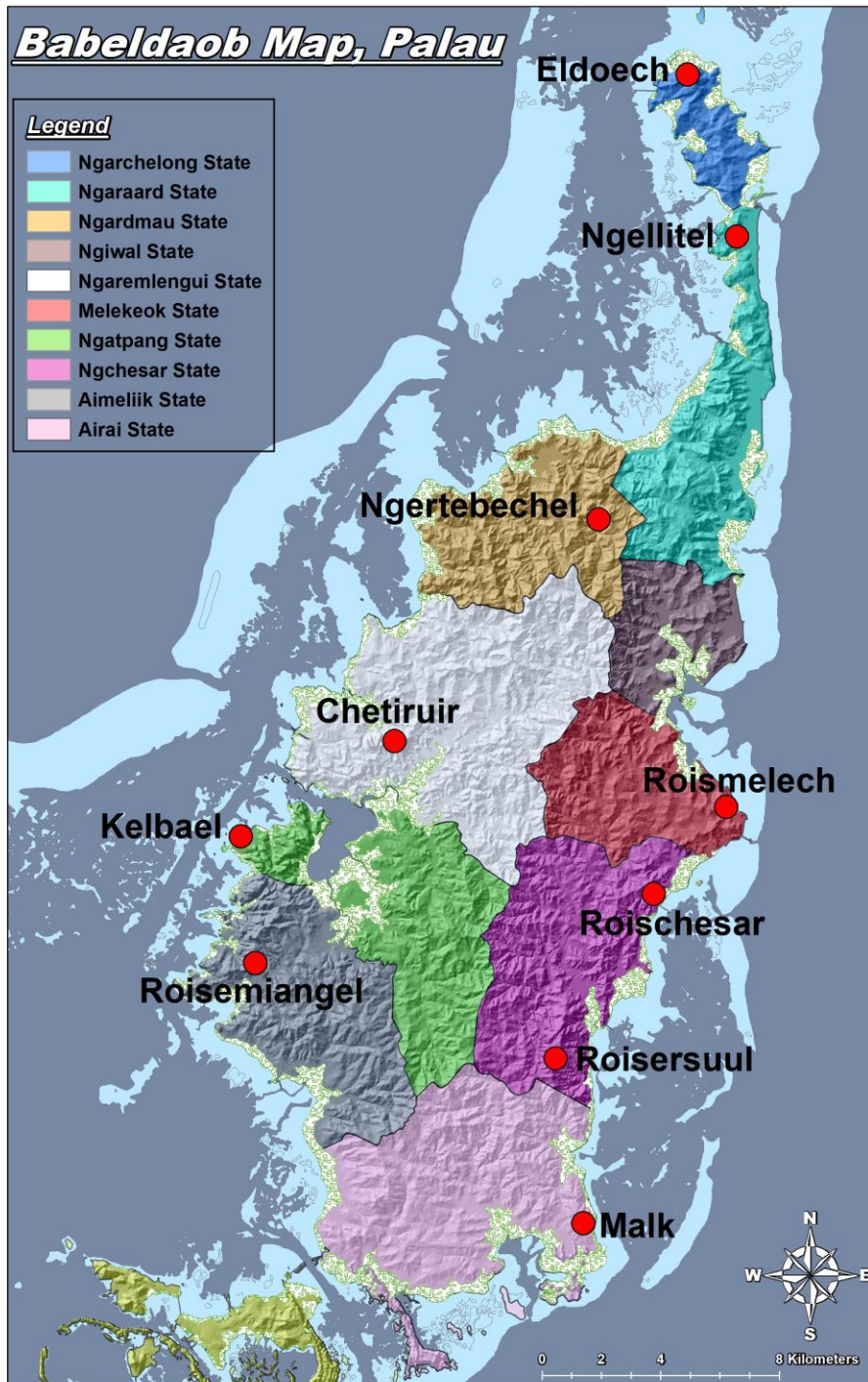
Members
Ramon Rechebei
David K Idip Jr.
Takamatsu Emesiochel
Nick Ngwal
John Gaylord

Advisor
Jerrold E. Knight

Republic of Palau
TERRITORY AND BOUNDARY

Task Force

Authorized by Executive Order No. 340 dated June, 17 2013



Task Force Officers

Chairman
Rebluud Kesolei

Members
Ramon Rechebei
David K Idip Jr.
Takamatsu Emesiochel
Nick Ngwal
John Gaylord

Advisor
Jerrold E. Knight

Fig. 4. Map showing the highest points in each state on Babeldaob Island.