

**UNDERSEA FEATURE NAME PROPOSAL**  
(See IHO-IOC Publication B-6 and **NOTE** overleaf)

Note: The boxes will expand as you fill the form.

<b>Name Proposed:</b>	Katmon Hill	<b>Ocean or Sea:</b>	Philippine Sea
-----------------------	-------------	----------------------	----------------

<b>Geometry</b> that best defines the feature (Yes/No):						
Point	Line	Polygon	Multiple points	Multiple lines*	Multiple polygons*	Combination of geometries*
Yes		Yes				

\* Geometry should be clearly distinguished when providing the coordinates below.

	Lat. (e.g. 63°32.6'N)		Long. (e.g. 046°21.3'W)	
<b>Coordinates:</b>	16° 45.6'N	(summit)	124° 34.5'E	(summit)
	16° 44.5'N	(bottom)	124° 31.7'E	(bottom)
	16° 46.4'N		124° 31.5'E	
	16° 48'N		124° 31.6'E	
	16° 48.4'N		124° 32.9'E	
	16° 48.4'N		124° 35.2'E	
	16° 48.2'N		124° 36.5'E	
	16° 46.9'N		124° 37.4'E	
	16° 46.9'N		124° 37.8'E	
	16° 46.6'N		124° 38.3'E	
	16° 45.8'N		124° 38.5'E	
	16° 44.2'N		124° 38.3'E	
	16° 43.5'N		124° 37.4'E	
	16° 43.8'N		124° 37.2'E	
	16° 44.3'N		124° 37'E	
	16° 44.5'N		124° 36.5'E	
	16° 44.3'N		124° 35.7'E	
	16° 43.2'N		124° 33.9'E	
16° 43.2'N		124° 32.5'E		
16° 44.5'N	(bottom)	124° 31.7'E	(bottom)	

<b>Feature Description:</b>	<b>Maximum Depth:</b>	2,479.84 m	<b>Steepness:</b>	9°
	<b>Minimum Depth:</b>	1,175.47 m	<b>Shape:</b>	Irregular
	<b>Total Relief:</b>	1,304.37 m	<b>Dimension/Size:</b>	9,995.21 m x 13,592.55 m

<b>Associated Features:</b>	Philippine Rise (Benham Rise)
-----------------------------	-------------------------------

<b>Chart/Map References:</b>	Shown Named on Map/Chart:	
	Shown Unnamed on Map/Chart:	Chart 4726A
	Within Area of Map/Chart:	Chart 4726A

<b>Reason for Choice of Name</b> (if a person, state how associated with the feature to be named):	<b>Katmon</b> (Dillenia Philippines) a medium-sized evergreen tree that grows as high as 10 to 15 meters. Its trunk is erect and the branches usually start midway of the trunk. The tree is buttress-forming, evergreen, and shade tolerant surface, and rough on the lower surface with tufts of stellate hairs. The shape of the seamount resembles a Katmon fruit.
--	--

<b>Discovery Facts:</b>	<b>Discovery Date:</b>	July 5, 2009
-------------------------	------------------------	--------------

	Discoverer (Individual, Ship):	NAMRIA
<b>Supporting Survey Data, including Track Controls:</b>	Date of Survey:	July 4-5, 2009
	Survey Ship:	BRP HYDROGRAPHER PRESBITERO
	Sounding Equipment:	Seabeam 2112
	Type of Navigation:	GPS with IMU
	Estimated Horizontal Accuracy, in nautical miles (nm):	0.027 nm (50 m)
	Survey Track Spacing:	2.5 nm
	Supporting material can be submitted as Annex in analog or digital form.	
<b>Proposer(s):</b>	Name(s):	Usec. PETER N. TIANGCO, PhD
	Date :	August 2018
	E-mail :	<a href="mailto:pntiangco@namria.gov.ph">pntiangco@namria.gov.ph</a>
	Organization and Address:	National Mapping and Resource Information Authority (NAMRIA) Lawton Avenue, Fort Andres Bonifacio, Taguig City, Philippines 1634
	Concurrer (name, e-mail, organization and address):	Department of Foreign Affairs (DFA), Roxas Boulevard, Pasay City, Philippines 1300 <a href="mailto:moao.div2@dfa.gov.ph">moao.div2@dfa.gov.ph</a>  Department of National Defense (DND), Camp Emilio Aguinaldo, Quezon City, Philippines 1110
<b>Remarks:</b>	The proposal was prepared by the Technical Working Group on Undersea Feature Names of the Hydrography Branch of NAMRIA, in cooperation with the National Institute of Geological Sciences – University of the Philippines and Mines and Geosciences Bureau.	

**NOTE:** This form should be forwarded, when completed:

- a) **If the undersea feature is located inside the external limit of the territorial sea:**  
- to your "National Authority for Approval of Undersea Feature Names" (see Publication B-6) or, if this does not exist or is not known, either to the IHO or to the IOC (see addresses below);
- b) **If at least 50 % of the undersea feature is located outside the external limits of the territorial sea:**  
- to the IHO or to the IOC, at the following addresses:

International Hydrographic Organization (IHO) 4b, Quai Antoine 1er B.P. 445 MC 98011 MONACO CEDEX <u>Principality of MONACO</u> Fax: +377 93 10 81 40 E-mail: <a href="mailto:info@iho.int">info@iho.int</a> Web: <a href="http://www.iho.int">www.iho.int</a>	Intergovernmental Oceanographic Commission (IOC) UNESCO Place de Fontenoy 75700 PARIS France Fax: +33 1 45 68 58 12 E-mail: <a href="mailto:info@unesco.org">info@unesco.org</a> Web: <a href="http://ioc-unesco.org/">http://ioc-unesco.org/</a>
---	--

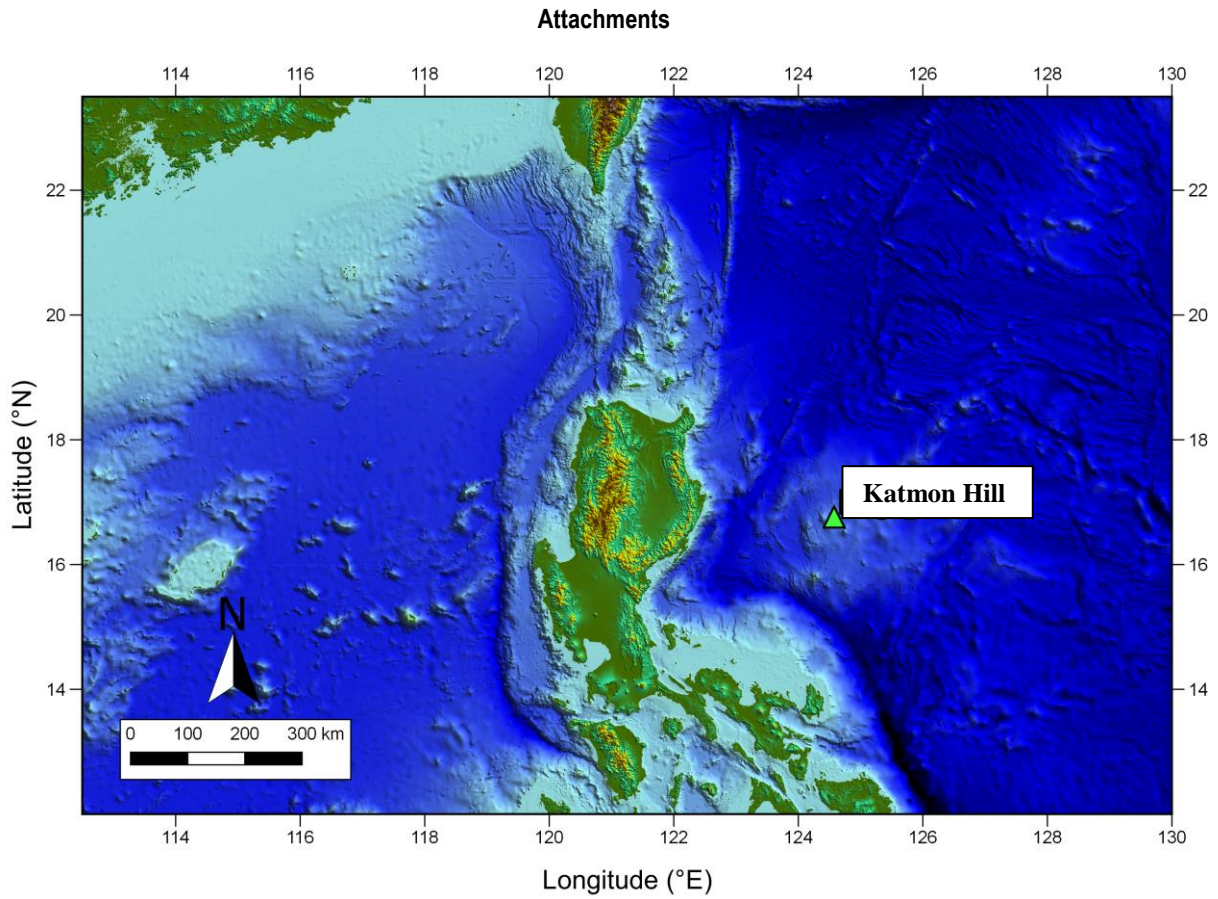


Fig. 1. Index map showing the location of Katmon Hill.

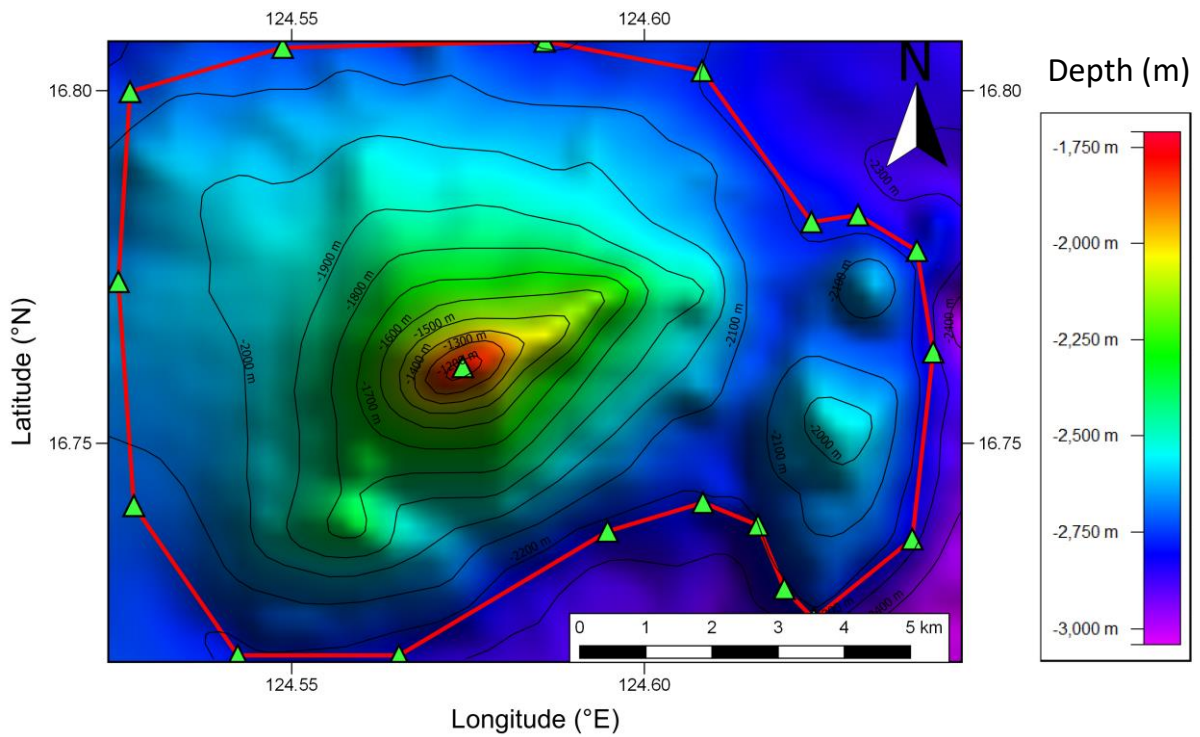


Fig 2. Bathymetric map of the Katmon Hill. Contour interval is 100 meters.

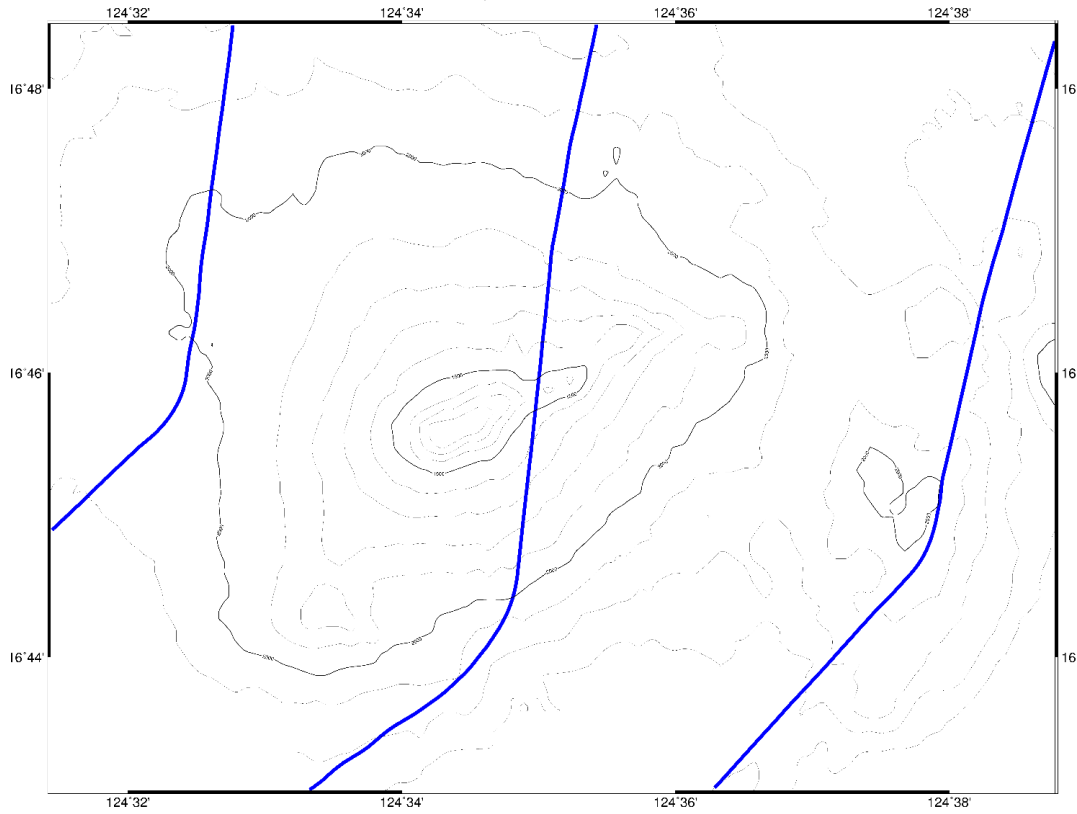


Fig 3. Bathymetric map of Katmon Hill showing track lines.

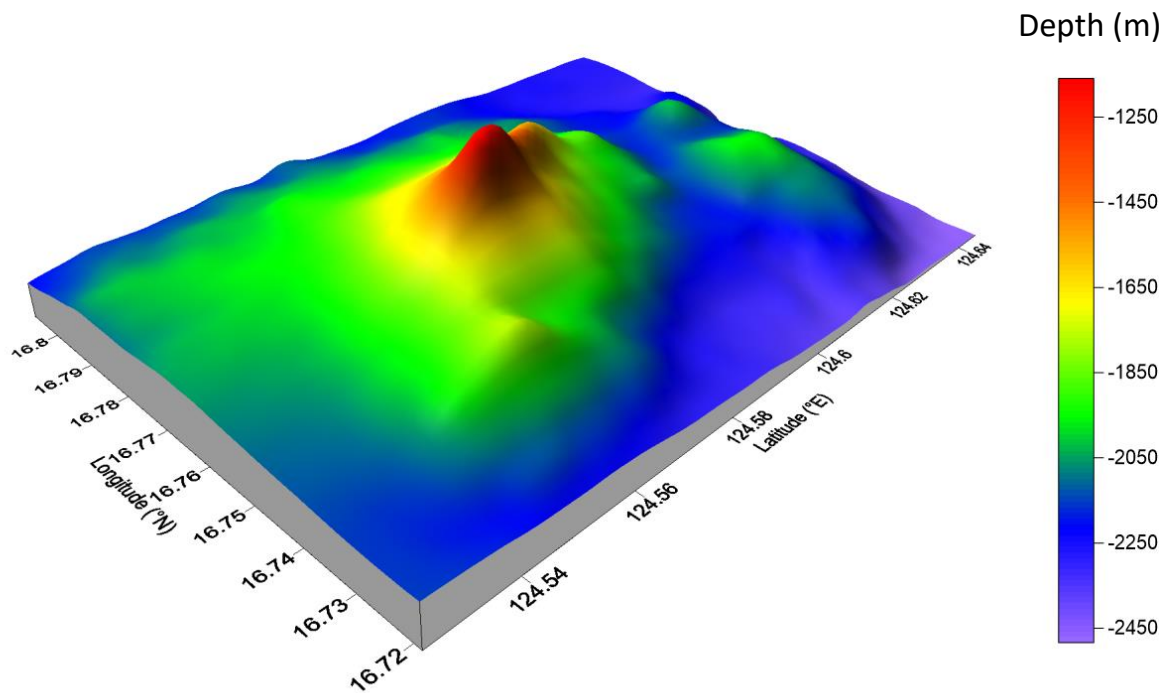


Figure 4. 3D bathymetric map of the Katmon Hill

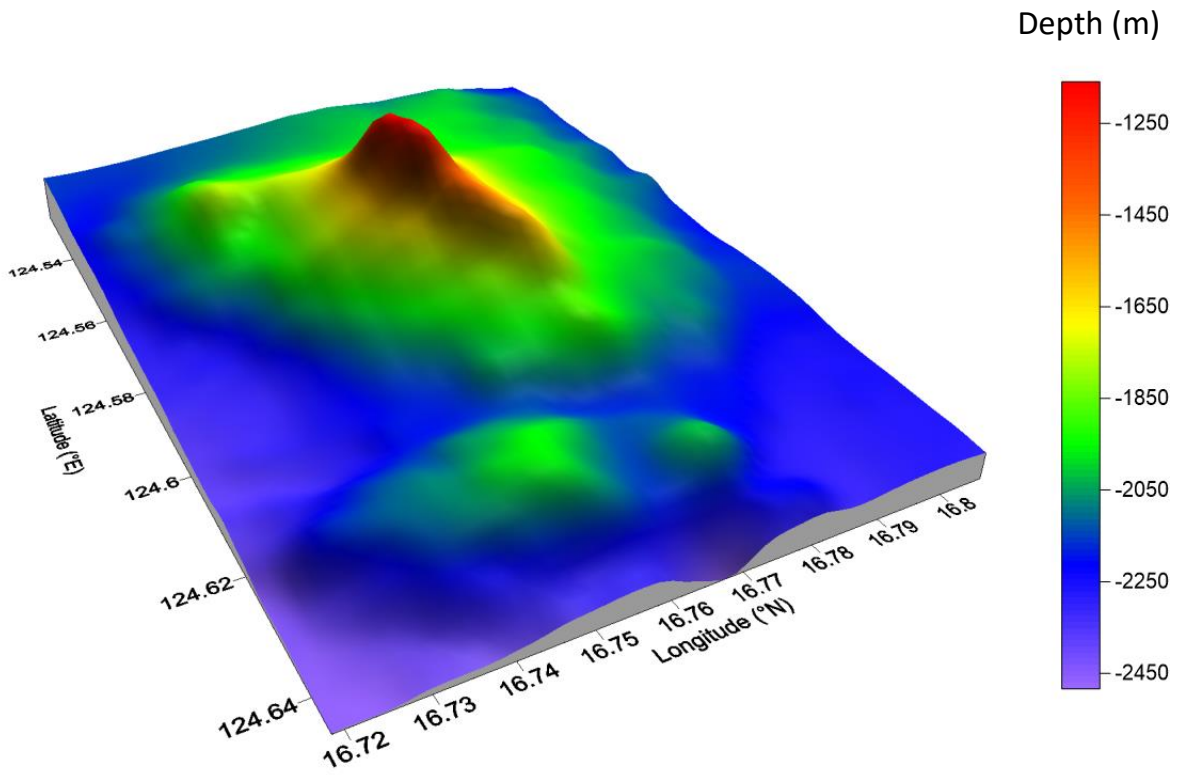


Figure 5. 3D bathymetric map of the Katmon Hill

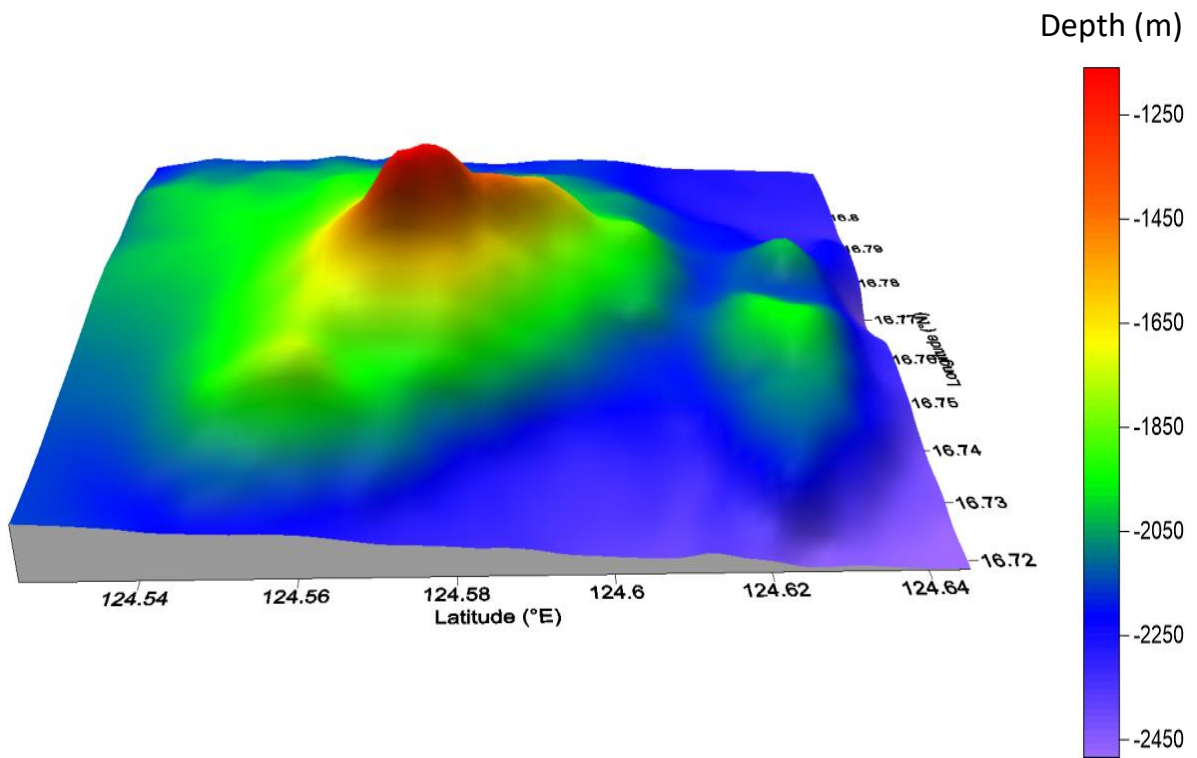


Figure 6. 3D bathymetric map of the Katmon Hill

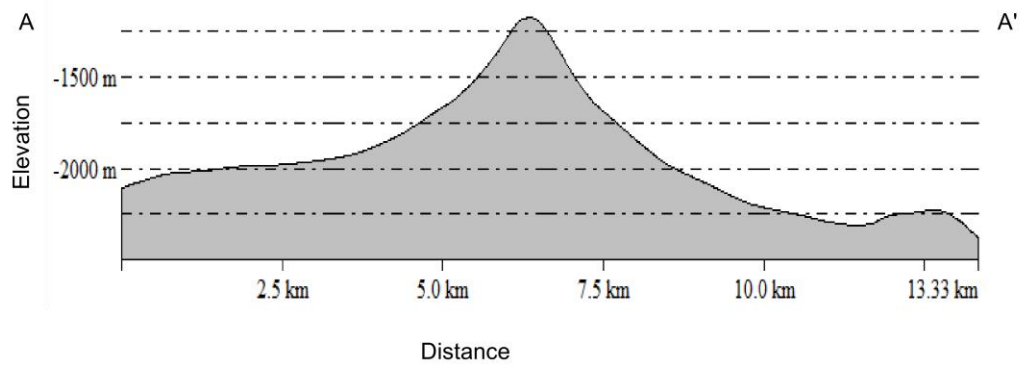
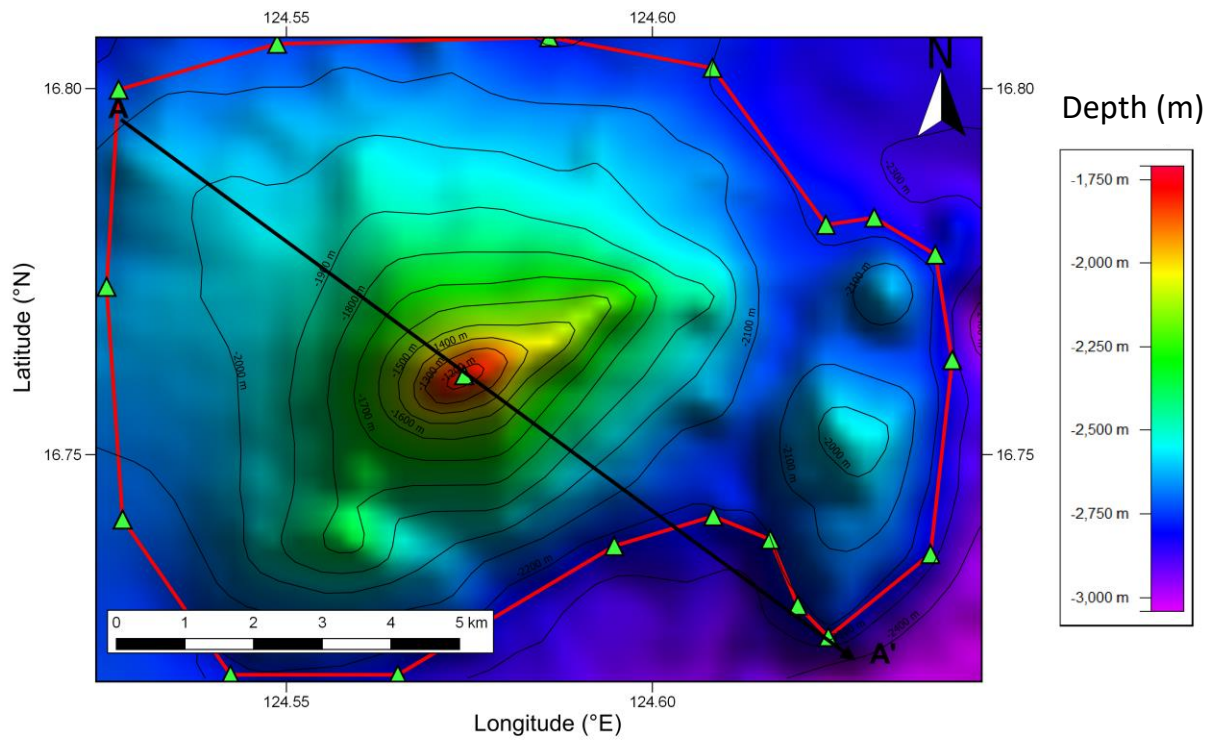


Fig. 7. Profile of Katmon Hill from the NW to SE edge (A-A').