

**UNDERSEA FEATURE NAME PROPOSAL**  
(See IHO-IOC Publication B-6 and **NOTE** overleaf)

Note: The boxes will expand as you fill the form.

<b>Name Proposed:</b>	Yakal Seamount	<b>Ocean or Sea:</b>	Philippine Sea
-----------------------	----------------	----------------------	----------------

<b>Geometry</b> that best defines the feature (Yes/No):						
Point	Line	Polygon	Multiple points	Multiple lines*	Multiple polygons*	Combination of geometries*
Yes		Yes				

\* Geometry should be clearly distinguished when providing the coordinates below.

<b>Coordinates:</b>	Lat. (e.g. 63°32.6'N)	Long. (e.g. 046°21.3'W)
	18°14.3'N (summit)	126°16.9'E (summit)
	18°21.6'N (bottom)	126°11.3'E (bottom)
	18°22'N	126°23.6'E
	18°19.5'N	126°24.1'E
	18°18.1'N	126°24.1'E
	18°12.4'N	126°23.2'E
	18°8.9'N	126°23.5'E
	18°6.6'N	126°20.7'E
	18°2.9'N	126°12.7'E
	18°2.8'N	126°7.7'E
	18°3.4'N	126°6'E
	18°6.7'N	126°2'E
	18°12.9'N	126°5.5'E
18°16.8'N (bottom)	126°10.5'E (bottom)	

<b>Feature Description:</b>	Maximum Depth:	5108.40 mm	Steepness:	9°
	Minimum Depth:	2407.25 mm	Shape:	Irregular Polygon
	Total Relief:	2,701.15 m	Dimension/Size:	36,221.25 m x 42,884.73 m

<b>Associated Features:</b>	Philippine Rise (Benham Rise)
-----------------------------	-------------------------------

<b>Chart/Map References:</b>	Shown Named on Map/Chart:	
	Shown Unnamed on Map/Chart:	Chart 4726A
	Within Area of Map/Chart:	Chart 4726A

<b>Reason for Choice of Name</b> (if a person, state how associated with the feature to be named):	<b>Yakal</b> ( <i>Shorea astylosa</i> ) is endemic to the Philippines. Its wood is hard and dark brownish-yellow. Branch are rather slender, blackish, and slightly hairy. Leaves are coriaceous, ovate to lanceolate or oblong-lanceolate or apex acuminate. Yakal is used for high-grade construction, bridges and wharves, mine timber, and other installations requiring high strength and durability. Yakal is commonly found in Luzon Island thus the seamount was named after.
--	---

<b>Discovery Facts:</b>	Discovery Date:	May 6, 2008
	Discoverer (Individual, Ship):	NAMRIA

<b>Supporting Survey Data, including Track Controls:</b>	Date of Survey:	May 6, 2008; June 9, 11, 14, 18, 2008; September 6, 2008;
--	-----------------	--

	Survey Ship:	BRP HYDROGRAPHER PRESBITERO
	Sounding Equipment:	Seabeam 2112
	Type of Navigation:	GPS with IMU
	Estimated Horizontal Accuracy, in nautical miles (nm):	0.027 nm (50m)
	Survey Track Spacing:	4.5 nm
	Supporting material can be submitted as Annex in analog or digital form.	

<b>Proposer(s):</b>	Name(s):	Usec. PETER N. TIANGCO, PhD
	Date :	August 2018
	E-mail :	<a href="mailto:pntiangco@namria.gov.ph">pntiangco@namria.gov.ph</a>
	Organization and Address:	National Mapping and Resource Information Authority (NAMRIA) Lawton Avenue, Fort Andres Bonifacio, Taguig City, Philippines 1634
	Concurrer (name, e-mail, organization and address):	Department of Foreign Affairs (DFA), Roxas Boulevard, Pasay City, Philippines 1300 <a href="mailto:moao.div2@dfa.gov.ph">moao.div2@dfa.gov.ph</a>  Department of National Defense (DND), Camp Emilio Aguinaldo, Quezon City, Philippines 1110

<b>Remarks:</b>	The proposal was prepared by the Technical Working Group on Undersea Feature Names of the Hydrography Branch of NAMRIA, in cooperation with the National Institute of Geological Sciences – University of the Philippines and Mines and Geosciences Bureau
-----------------	--

**NOTE:** This form should be forwarded, when completed:

- a) **If the undersea feature is located inside the external limit of the territorial sea:**  
- to your "National Authority for Approval of Undersea Feature Names" (see Publication B-6) or, if this does not exist or is not known, either to the IHO or to the IOC (see addresses below);
- b) **If at least 50 % of the undersea feature is located outside the external limits of the territorial sea:**  
- to the IHO or to the IOC, at the following addresses :

International Hydrographic Organization (IHO) 4b, Quai Antoine 1er B.P. 445 MC 98011 MONACO CEDEX Principality of MONACO Fax: +377 93 10 81 40 E-mail: <a href="mailto:info@iho.int">info@iho.int</a> Web: <a href="http://www.iho.int">www.iho.int</a>	Intergovernmental Oceanographic Commission (IOC) UNESCO Place de Fontenoy 75700 PARIS France Fax: +33 1 45 68 58 12 E-mail: <a href="mailto:info@unesco.org">info@unesco.org</a> Web: <a href="http://ioc-unesco.org/">http://ioc-unesco.org/</a>
--	--

### Attachments

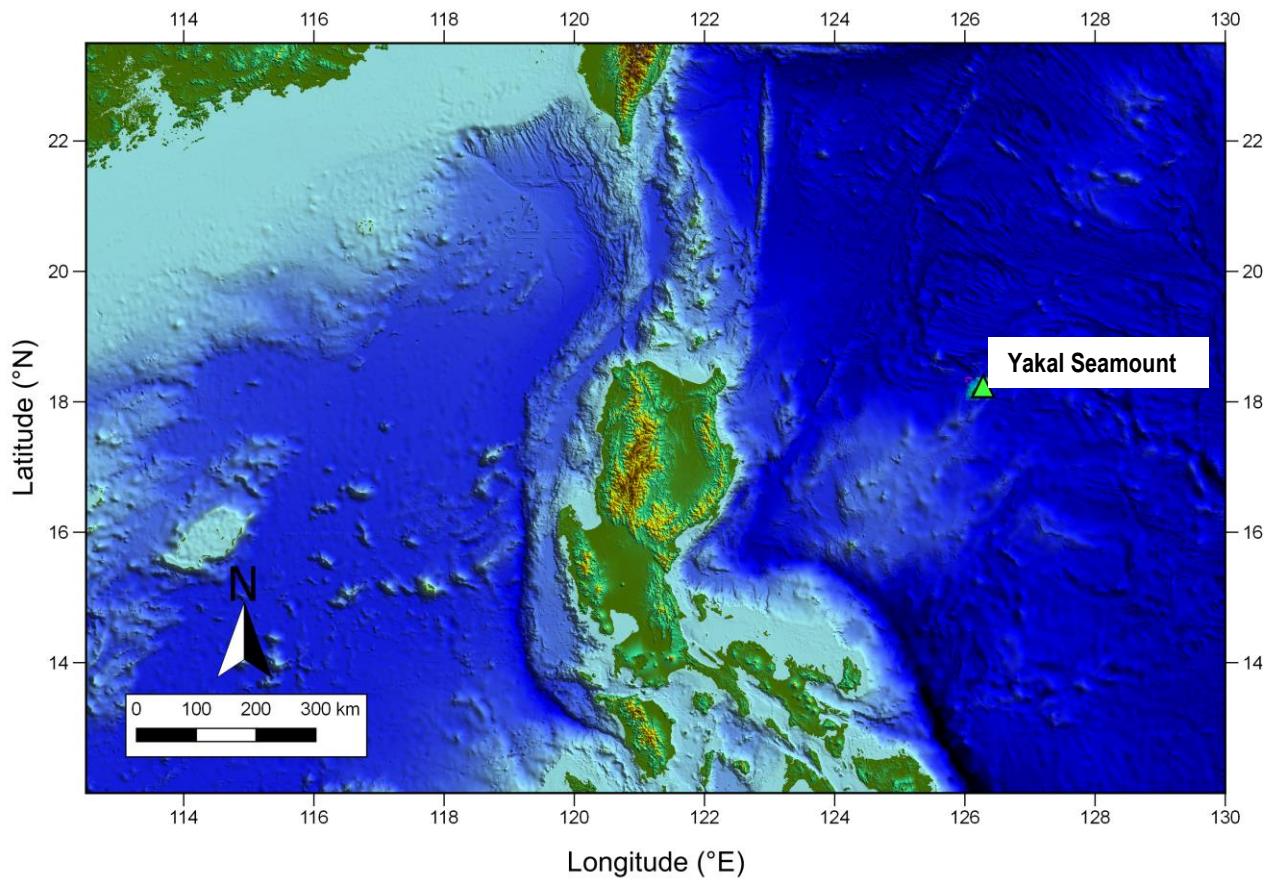


Fig. 1. Index map showing the location of Yakal Seamount.

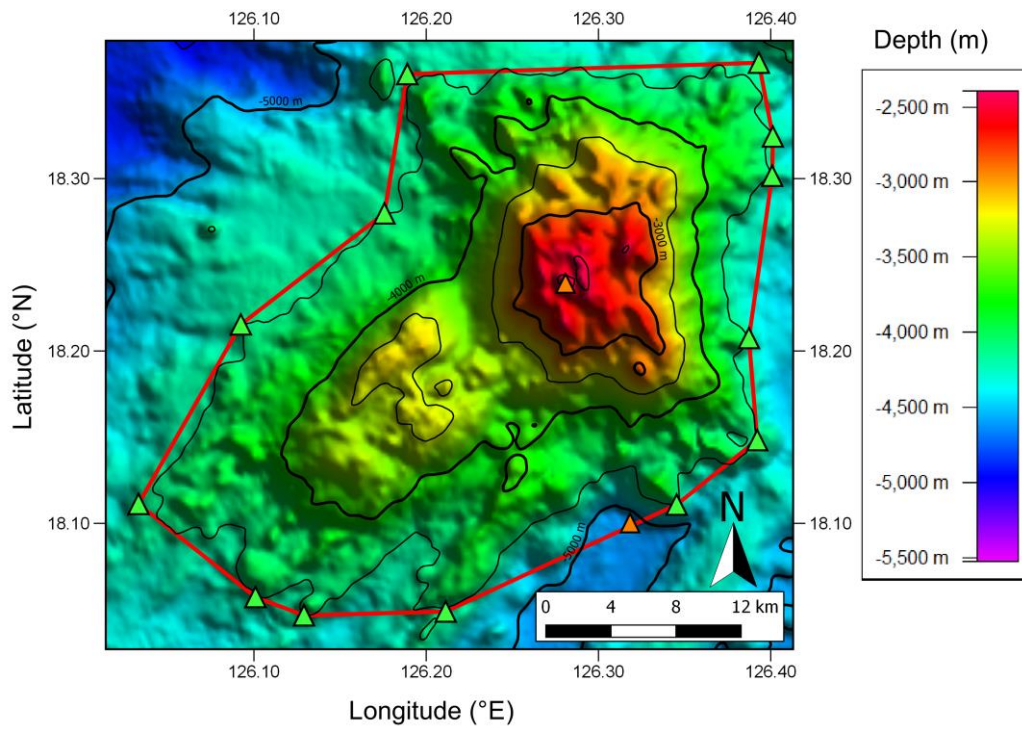


Fig. 2. Bathymetric map of the Yakal Seamount. Contour interval is 500 meters.

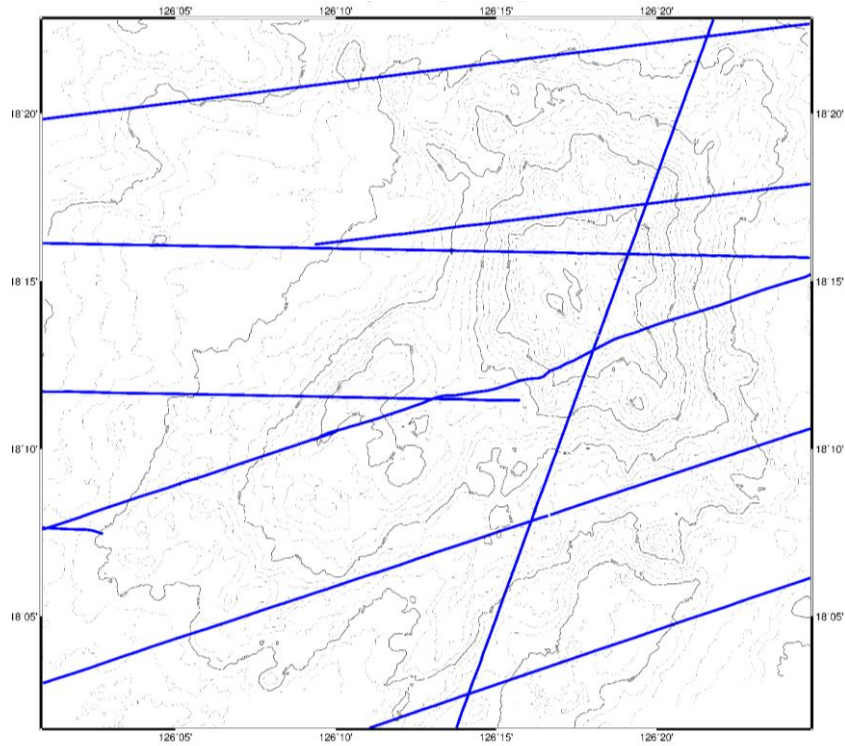


Fig 3. Bathymetric map of Yakal Seamount showing track lines

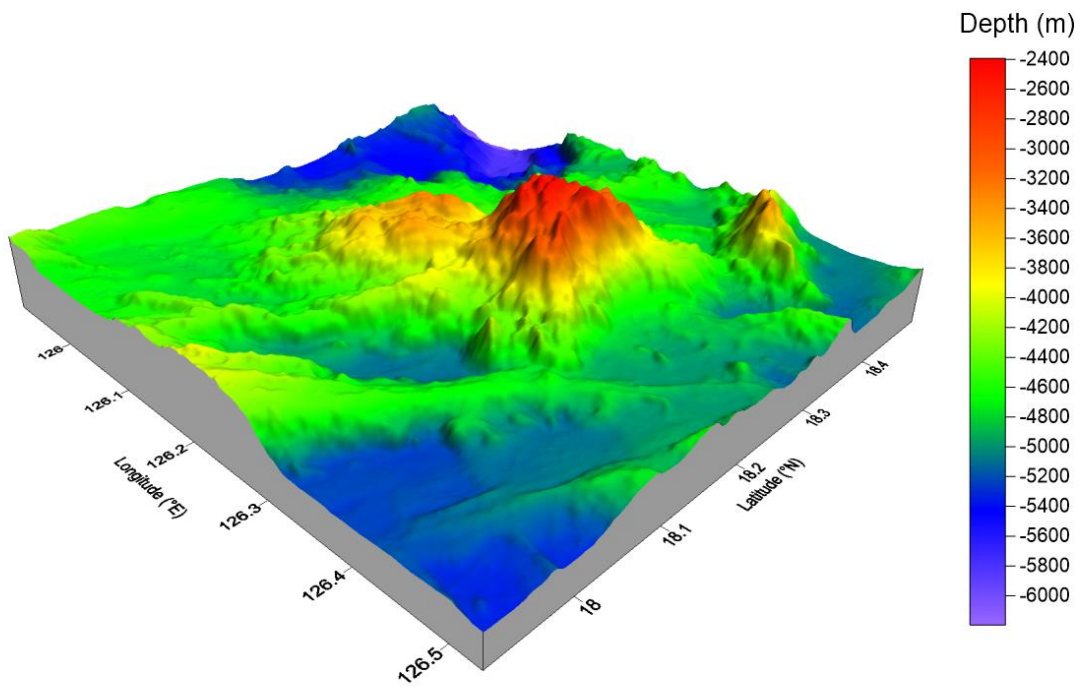


Figure 4. 3D bathymetric map of the Yakal Seamount. View looking northwest.

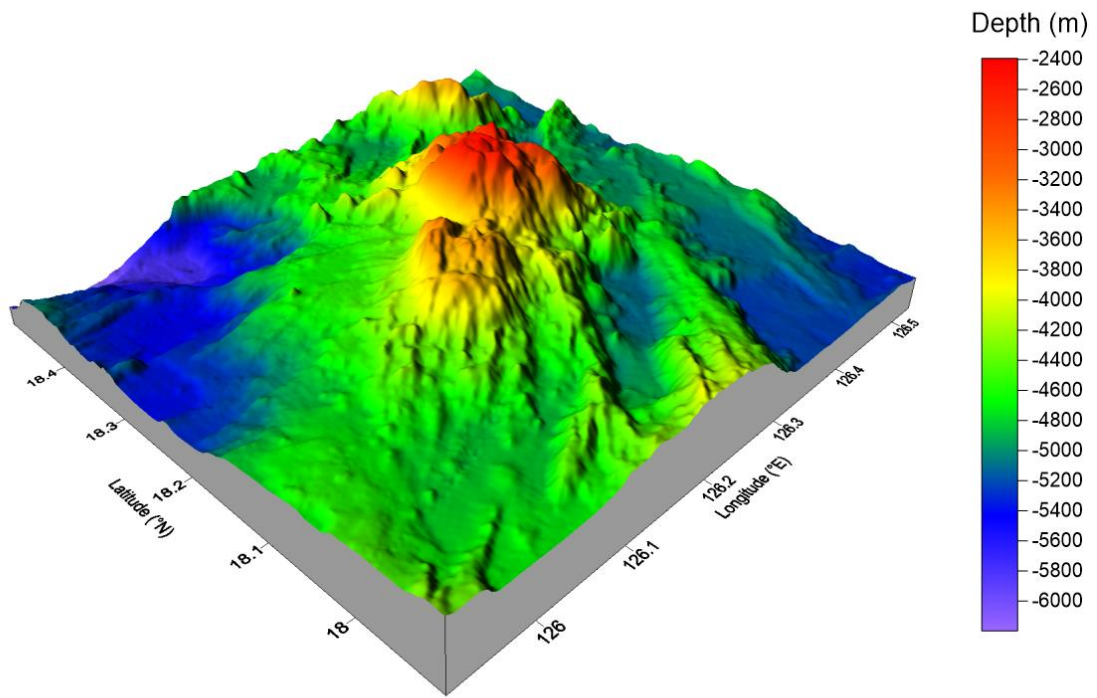


Figure 5. 3D bathymetric map of the Yakal Seamount. View looking northeast.

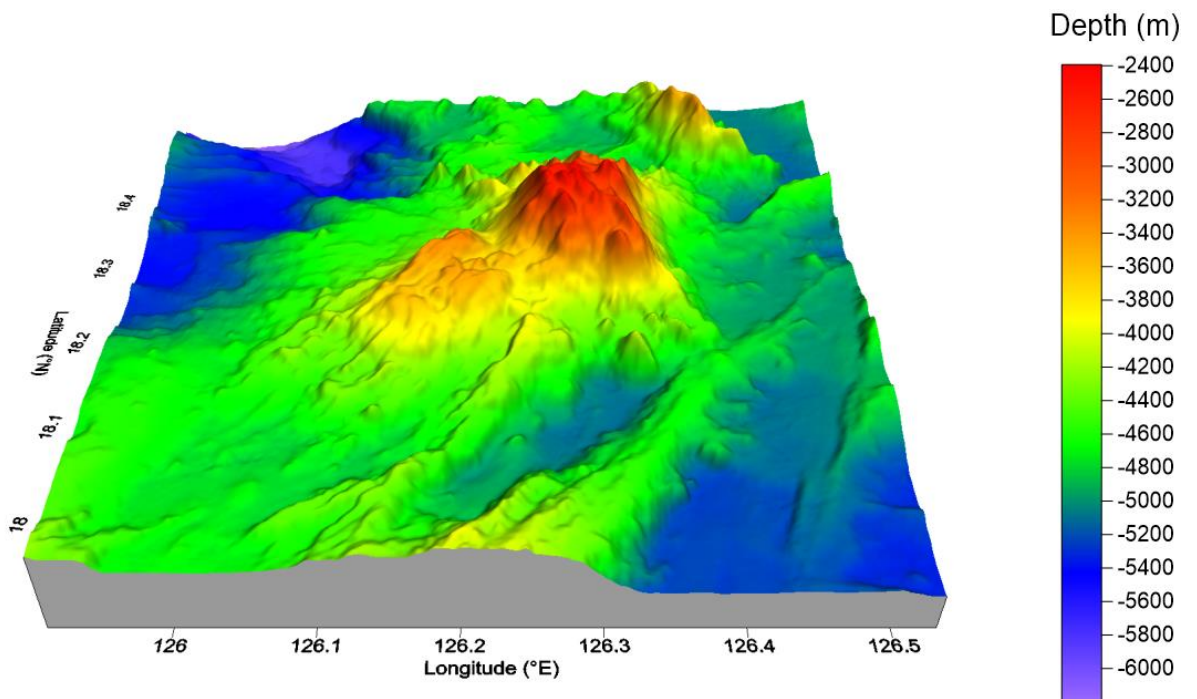


Figure 6. 3D bathymetric map of the Yakal Seamount, view looking north.

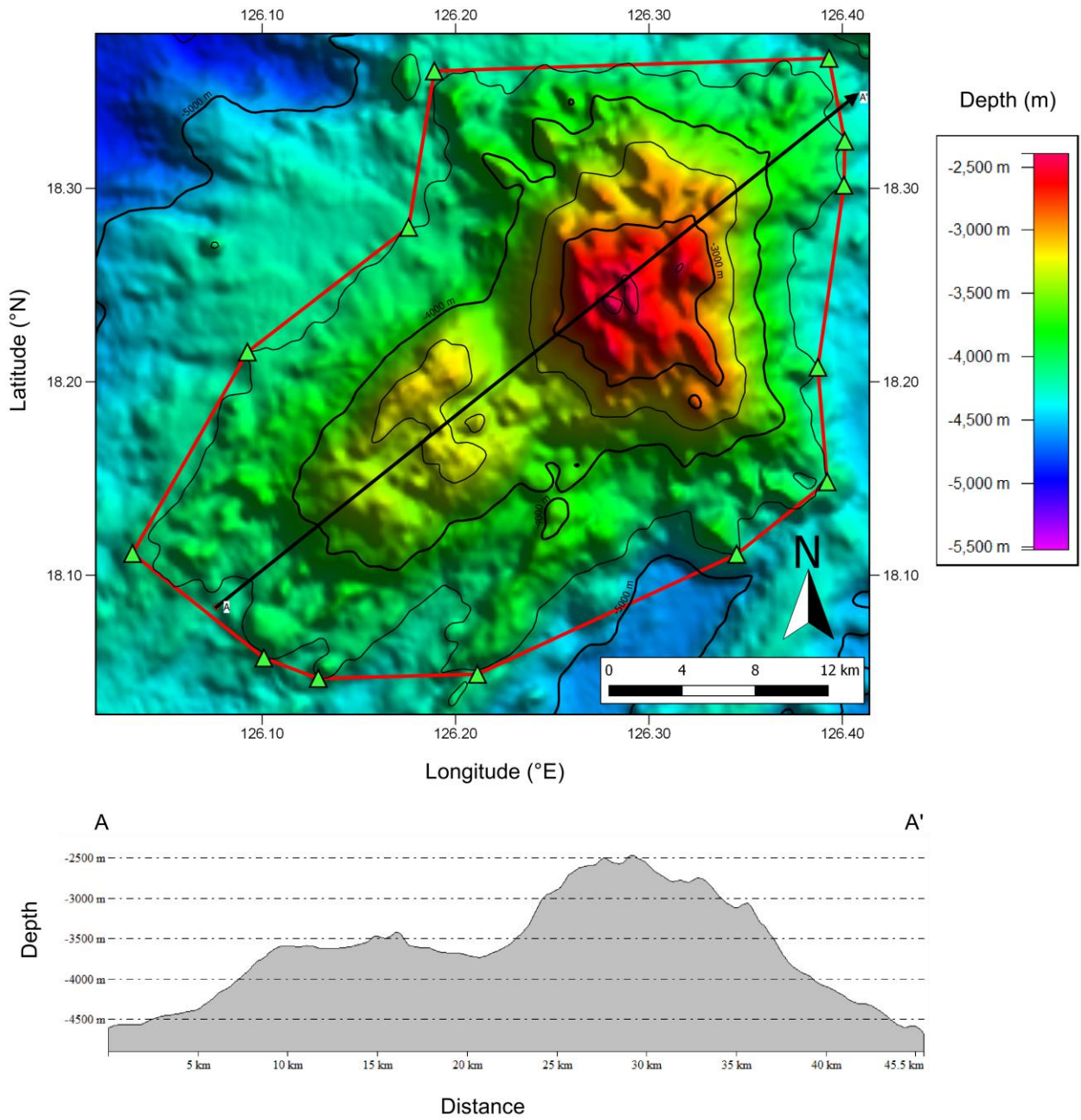


Fig. 7. Profile of Yakal Seamount from the south to north edge (A-A'). Vertical exaggeration is 4.5.