

UNDERSEA FEATURE NAME PROPOSAL
(See IHO-IOC Publication B-6 and **NOTE** overleaf)

Note: The boxes will expand as you fill the form.

| | | | |
|-----------------------|-------------------|----------------------|----------------|
| Name Proposed: | Mahogany Seamount | Ocean or Sea: | Philippine Sea |
|-----------------------|-------------------|----------------------|----------------|

| | | | | | | |
|--|------|---------|-----------------|-----------------|--------------------|----------------------------|
| Geometry that best defines the feature (Yes/No) : | | | | | | |
| Point | Line | Polygon | Multiple points | Multiple lines* | Multiple polygons* | Combination of geometries* |
| Yes | | Yes | | | | |

* Geometry should be clearly distinguished when providing the coordinates below.

| | Lat. (e.g. 63°32.6'N) | | Long. (e.g. 046°21.3'E) | |
|---------------------|-----------------------|-------------|-------------------------|----------|
| Coordinates: | 18° 18.6'N | (summit) | 123° 16.5'E | (summit) |
| | 18° 26.8'E | (bottom) | 123° 11.2'N | (bottom) |
| | 18° 27.7'E | | 123° 13.3'N | |
| | 18° 26.1'E | | 123° 21.8'N | |
| | 18° 24.4'E | | 123° 23.5'N | |
| | 18° 21.5'E | | 123° 21.5'N | |
| | 18° 17.3'E | | 123° 20.4'N | |
| | 18° 12.3'E | | 123° 19.8'N | |
| | 18° 10.5'E | | 123° 18.7'N | |
| | 18° 12.5'E | | 123° 10.4'N | |
| | 18° 13.8'E | | 123° 9.6'N | |
| 18° 25.3'E | (bottom) | 123° 10.4'N | (bottom) | |

| | | | | |
|-----------------------------|-----------------|----------|------------------|------------------------------|
| Feature Description: | Maximum Depth: | 4246.5 m | Steepness : | 11.3 ° |
| | Minimum Depth : | 2620.5 m | Shape : | Square |
| | Total Relief : | 1626 m | Dimension/Size : | 31,817.09 m x 25,685.94 m |

| | |
|-----------------------------|-------------------------------|
| Associated Features: | Philippine Rise (Benham Rise) |
|-----------------------------|-------------------------------|

| | | |
|------------------------------|-----------------------------|-------------|
| Chart/Map References: | Shown Named on Map/Chart: | |
| | Shown Unnamed on Map/Chart: | Chart 4726A |
| | Within Area of Map/Chart: | Chart 4726A |

| | |
|--|--|
| Reason for Choice of Name (if a person, state how associated with the feature to be named): | Mahogany tree in the Philippines has become a common reforestation species in the Philippines. Its average height is 30 meters but it can grow as high as 60 meters. Its large leaves make it a good shade for crops such as coffee and cacao. Mahogany is also prized throughout the world for its reddish wood which is widely used for carpentry, veneers and cabinet-making. The shape of the seamount is similar to an upright Philippine mahogany tree. |
|--|--|

| | | |
|-------------------------|--------------------------------|--------------|
| Discovery Facts: | Discovery Date: | June 8, 2008 |
| | Discoverer (Individual, Ship): | NAMRIA |

| | | |
|--|-----------------|-----------------------|
| Supporting Survey Data, including | Date of Survey: | May 5-7, June 8, 2008 |
|--|-----------------|-----------------------|

| | | |
|------------------------|--|--------------------------------|
| Track Controls: | Survey Ship: | BRP HYDROGRAPHER PRESBITERO |
| | Sounding Equipment: | Seabeam 2112 |
| | Type of Navigation: | GPS with IMU |
| | Estimated Horizontal Accuracy, in nautical miles (nm): | 0.027 nm (50 m) |
| | Survey Track Spacing: | 1.6 nm |
| | Supporting material can be submitted as Annex in analog or digital form. Note: Topex UCSD was partially used. | |

| | | |
|---------------------|---|---|
| Proposer(s): | Name(s): | Usec. PETER N. TIANGCO, PhD |
| | Date : | August 2018 |
| | E-mail : | pntiangco@namria.gov.ph |
| | Organization and Address: | National Mapping and Resource Information Authority (NAMRIA) Lawton Avenue, Fort Andres Bonifacio, Taguig City, Philippines 1634 |
| | Concurrer (name, e-mail, organization and address): | Department of Foreign Affairs (DFA), Roxas Boulevard, Pasay City, Philippines 1300 moao.div2@dfa.gov.ph Department of National Defense (DND), Camp Emilio Aguinaldo, Quezon City, Philippines 1110 |

| | |
|-----------------|---|
| Remarks: | The proposal was prepared by the Technical Working Group on Undersea Feature Names of the Hydrography Branch of NAMRIA, in cooperation with the National Institute of Geological Sciences – University of the Philippines and Mines and Geosciences Bureau. |
|-----------------|---|

NOTE: This form should be forwarded, when completed:

- a) **If the undersea feature is located inside the external limit of the territorial sea:**
- to your "National Authority for Approval of Undersea Feature Names" (see Publication B-6) or, if this does not exist or is not known, either to the IHO or to the IOC (see addresses below);
- b) **If at least 50 % of the undersea feature is located outside the external limits of the territorial sea:**
- to the IHO or to the IOC, at the following addresses :

| | |
|--|--|
| International Hydrographic Organization (IHO) 4b, Quai Antoine 1er B.P. 445 MC 98011 MONACO CEDEX Principality of MONACO Fax: +377 93 10 81 40 E-mail: info@iho.int Web: www.iho.int | Intergovernmental Oceanographic Commission (IOC) UNESCO Place de Fontenoy 75700 PARIS France Fax: +33 1 45 68 58 12 E-mail: info@unesco.org Web: http://ioc-unesco.org/ |
|--|--|

Attachments

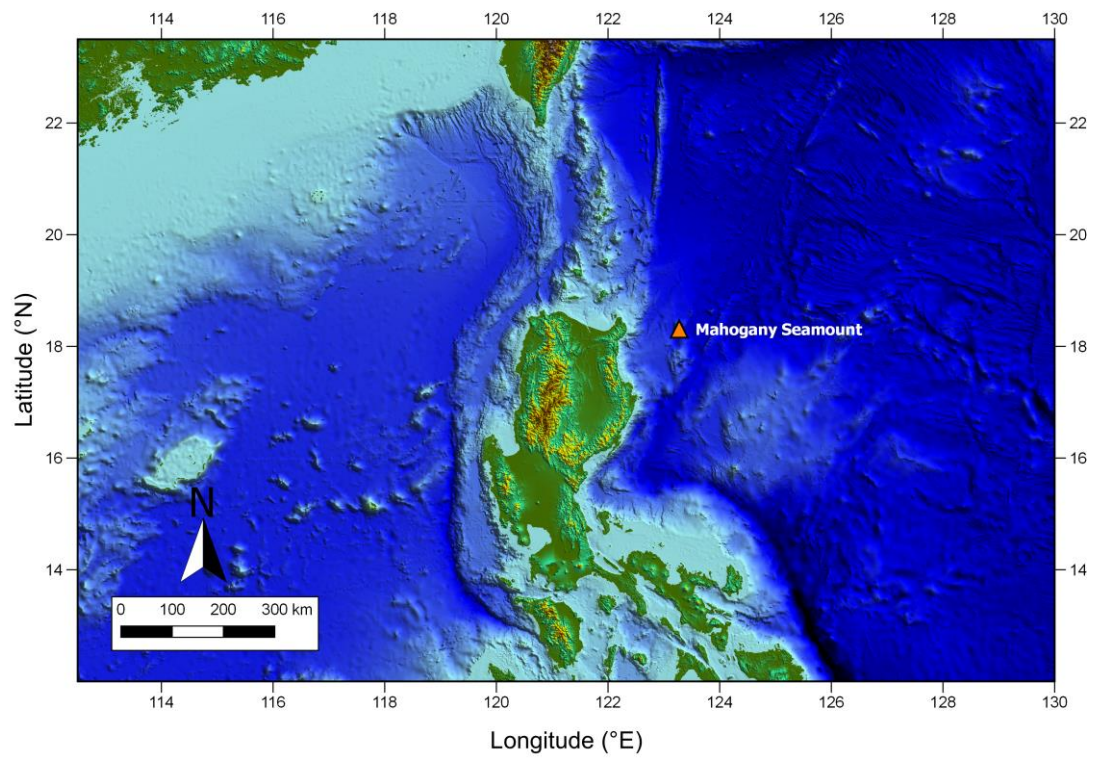


Fig. 1. Index map showing the location of Mahogany Seamount.

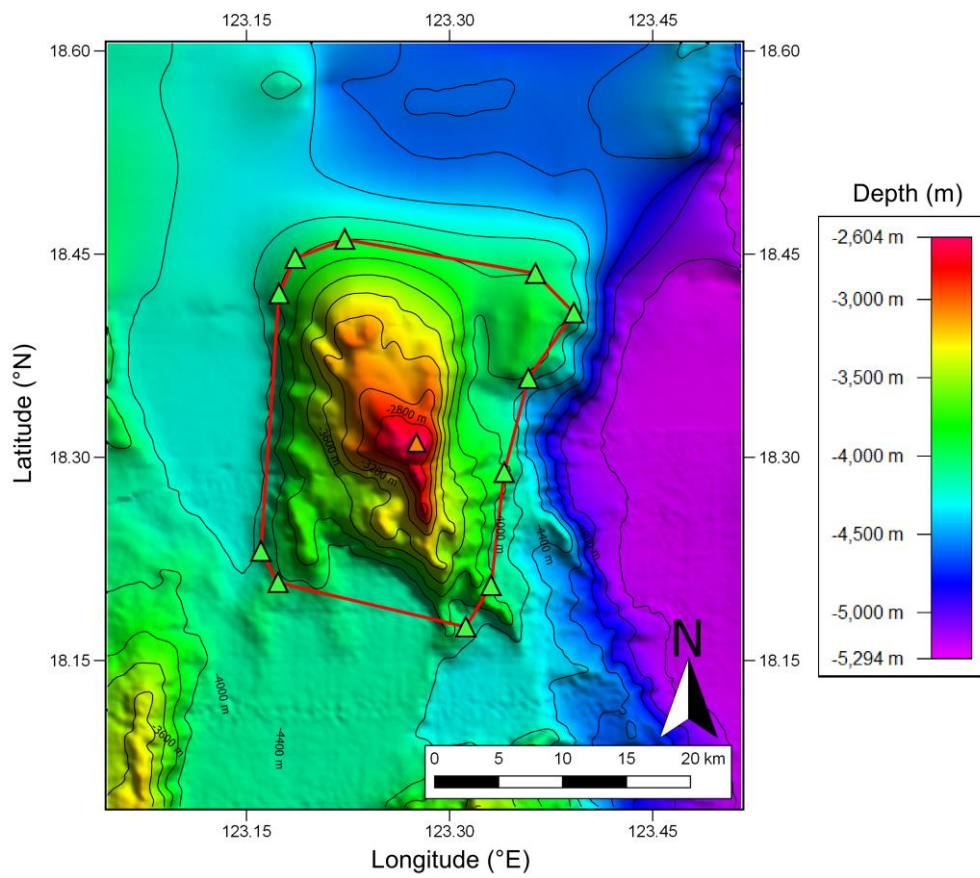


Fig. 2. Bathymetric map of the Mahogany Seamount. Contour interval is 200m.

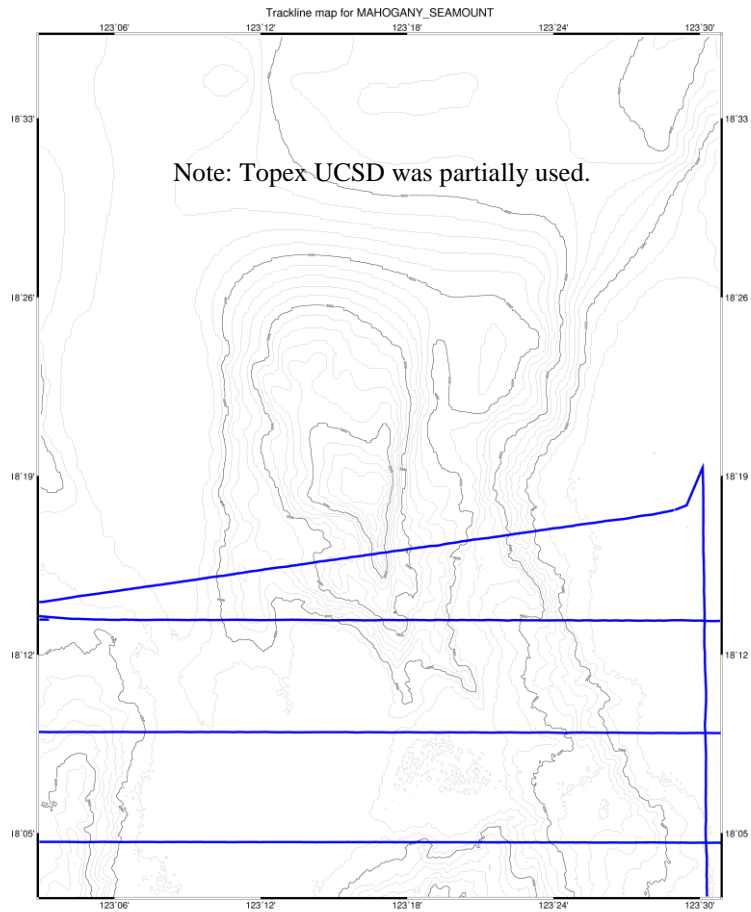


Fig 3. Bathymetric map of Mahogany Seamount showing track lines.

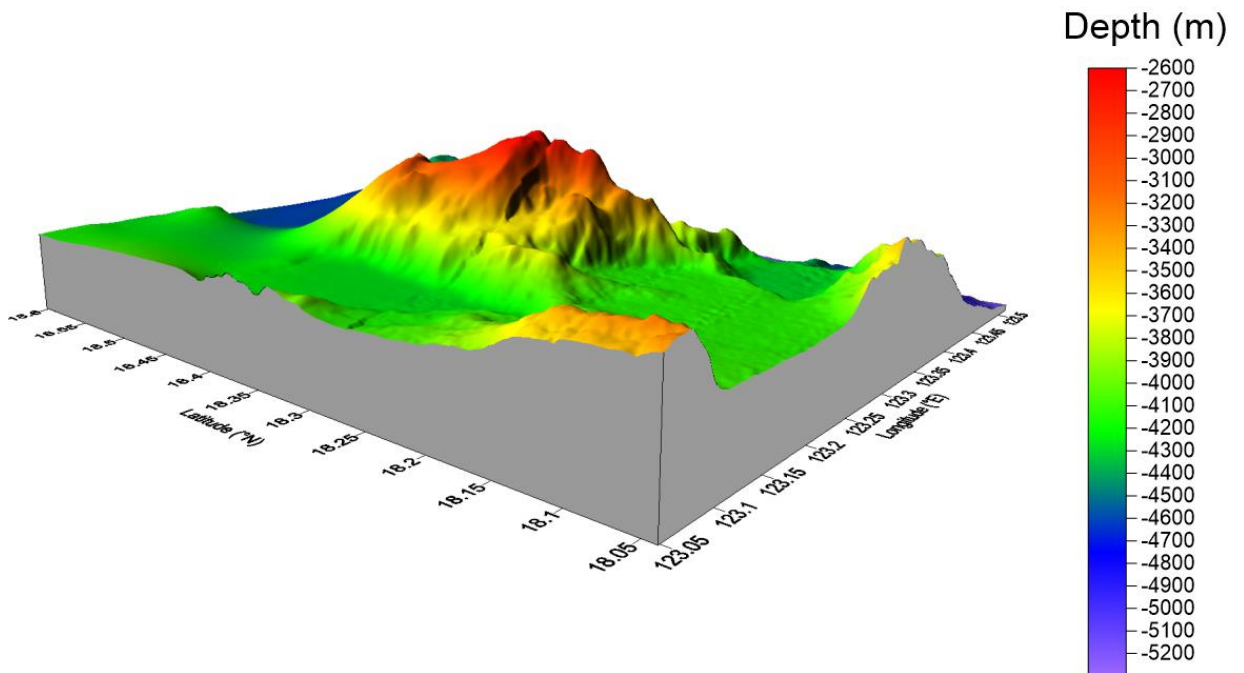


Figure 4. 3D bathymetric map of the Mahogany Seamount. View looking northeast.

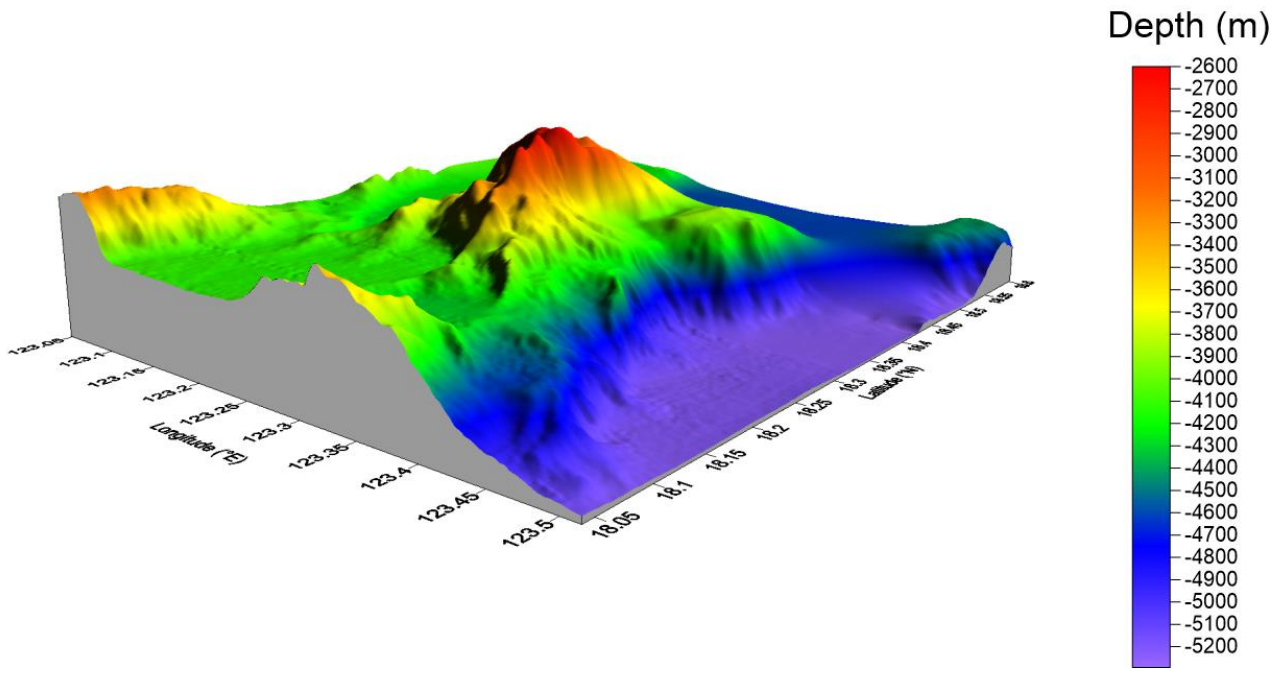


Figure 5. 3D bathymetric map of the Mahogany Seamount. View looking northwest.

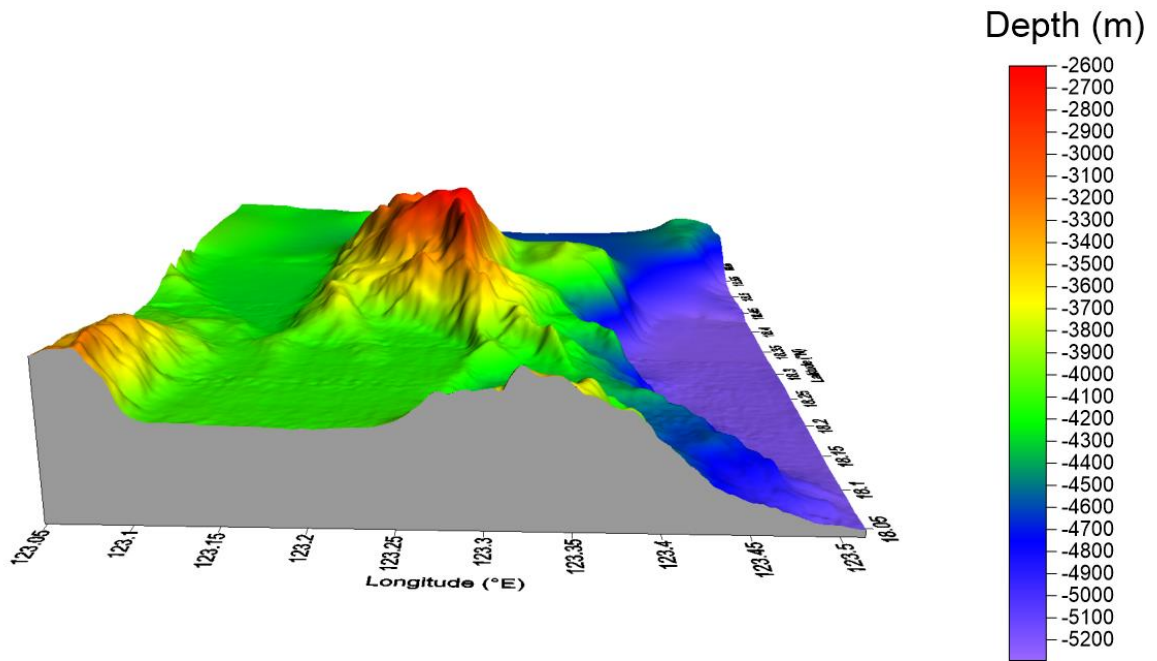


Figure 6. 3D bathymetric map of the Mahogany Seamount, view looking north.

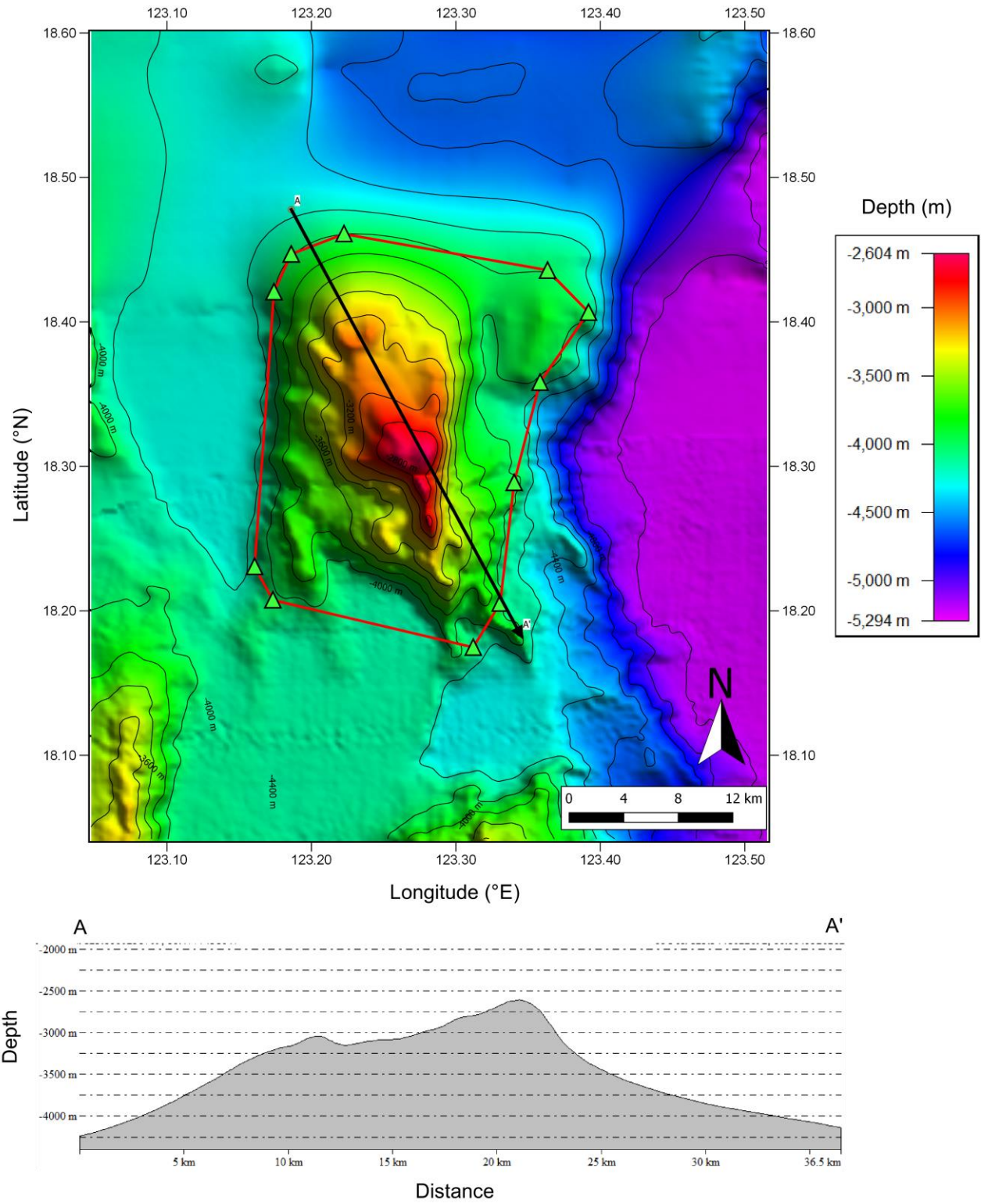


Figure 7. Profile A-A' of the Mahogany Seamount is shown with the bathymetric map with vertical exaggeration of 3.