

| | |
|--|---|
| International Hydrographic Organization | Intergovernmental Oceanographic Commission |
|--|---|

Naming Proposal Form of Undersea Features on the International Seabed

Note: The form unit can be expanded when filling out this form.

| | | | |
|-------------|-------------------|---------------|--------------------|
| To be named | Wenpi Hill | Located Ocean | East Pacific Ocean |
|-------------|-------------------|---------------|--------------------|

| | | | | | | |
|--|------|---------|--------------|--------------|-------------------|---------------------------------|
| The geometry that best delimits the undersea features(Y/N) | | | | | | |
| Point | Line | Polygon | Multi-points | Multi-lines* | Multiple polygons | Multiple geometric combinations |
| | | Y | | | | |

* The geometry should be clearly reflected when the following coordinates are provided.


| | Latitude (e.g. 63°32.6'N) | Longitude (e.g. 046°21.3'W) |
|----------------------|---------------------------|-----------------------------|
| Coordinates | 10° 40.4' N(Vertex) | 155° 19.0' W (Vertex) |
| | 10° 39.8' N (Bottom) | 155° 20.0' W (Bottom) |
| | 10° 40.3' N | 155° 20.0' W |
| | 10° 40.7' N | 155° 19.8' W |
| | 10° 41.0' N | 155° 19.5' W |
| | 10° 41. 1' N | 155° 19.1' W |
| | 10° 41.2' N | 155° 19.0' W |
| | 10° 41.6' N | 155° 18.9' W |
| | 10° 41.8' N | 155° 18.7' W |
| | 10° 42.1' N | 155° 18.6' W |
| | 10° 42.2' N | 155° 18.4' W |
| | 10° 42.1' N | 155° 18.2' W |
| | 10° 42.1' N | 155° 17.8' W |
| | 10° 41.7' N | 155° 17.4' W |
| | 10° 41.3' N | 155° 17.2' W |
| | 10° 41.1' N | 155° 17.3' W |
| | 10° 41.1' N | 155° 17.4' W |
| | 10° 41.2' N | 155° 17.8' W |
| | 10° 40.9' N | 155° 18.0' W |
| | 10° 40.5' N | 155° 17.6' W |
| | 10° 40.1' N | 155° 17.3' W |
| | 10° 39.3' N | 155° 17.5' W |
| | 10° 38.9' N | 155° 17.8' W |
| 10° 38.7' N | 155° 18.4' W | |
| 10° 38.7' N | 155° 19.1' W | |
| 10° 39.1' N | 155° 19.7' W | |
| 10° 39.8' N (Bottom) | 155° 20.0' W (Bottom) | |

| | | | | |
|----------------------------------|---------------------|-------|-------|--|
| Description of Undersea Features | Maximum water depth | 5136m | Slope | |
| | Minimum water | 4564m | Shape | |

| | | | | |
|--|--------|------|-------|---------|
| | depth | | | |
| | Height | 572m | Scale | 6km×5km |

| | |
|--|---|
| Description of Related Undersea Features | Wenpi Hill is located about 94km northwest of Daxitong Knoll, with an overlooking shape of kettle. |
|--|---|

| | | |
|---------------------|---|------------|
| Reference Chart/Map | Chart/Map labeled with the named undersea feature | |
| | Chart/Map labeled with the unnamed undersea feature | GEBCO 5.07 |
| | Chart/Map labeled with area of the undersea feature | |

| | |
|---|---|
| Reason for choosing the name (if it is a person's name, the relationship with the entity to be named should be stated): | <p>Wenpi is a kettle carried by ancient Chinese soldier. The kettle can be filled with water or alcohol. This hill has an overlooking shape of this kettle. So we name it Wenpi Hill.</p>  |
|---|---|

| | | |
|--------------------|---------------------------------|---|
| Facts of Discovery | Discovery date | Sept. to Nov., 2017 |
| | Discoverer (individual, vessel) | Xiangyanghong06, Chinese scientific research ship |

| | | |
|---|--|---|
| Obtained Survey Data Supporting for This Discovery, Including Line Control: | Survey date | Sept. to Nov., 2017 |
| | Survey vessel | Xiangyanghong06, Chinese scientific research ship |
| | Sounding equipment | Multibeam sounding system (EM122) |
| | Navigation type | GPS |
| | Estimated horizontal accuracy (nautical miles) | ≤0.08 nm |
| | Line spacing (nautical mile) | 5nm |
| | Support materials can be submitted as attachments in mock or digital form: see | |

| | |
|--|------------|
| | attachment |
|--|------------|

| | | |
|----------------|------------------|---|
| NamingProposer | Name | China Minmetals Corporation |
| | Date | Apr. 8, 2018 |
| | E-mail: | support@minmetals.com |
| | Unit and address | Block A, Minmetals Plaza, No. 3 Chaoyangmen North Street, Dongcheng District, Beijing |

| | |
|---------|---|
| Remarks | This proposal has been reviewed and approved by China Subcommittee on Undersea Feature Names (CCUFN). No.64 Fuchengmennei Street, Xicheng District, Beijing, China, 100812 heyunxu@sina.com |
|---------|---|

Appendix

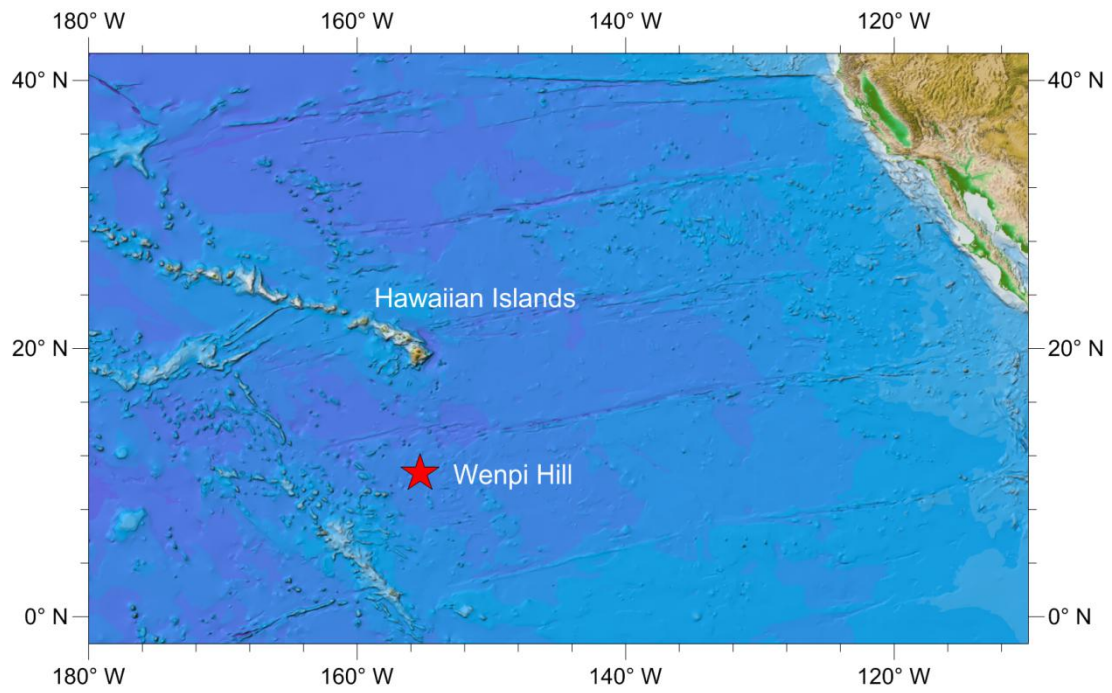


Fig.1 Wenpi Hill location index map

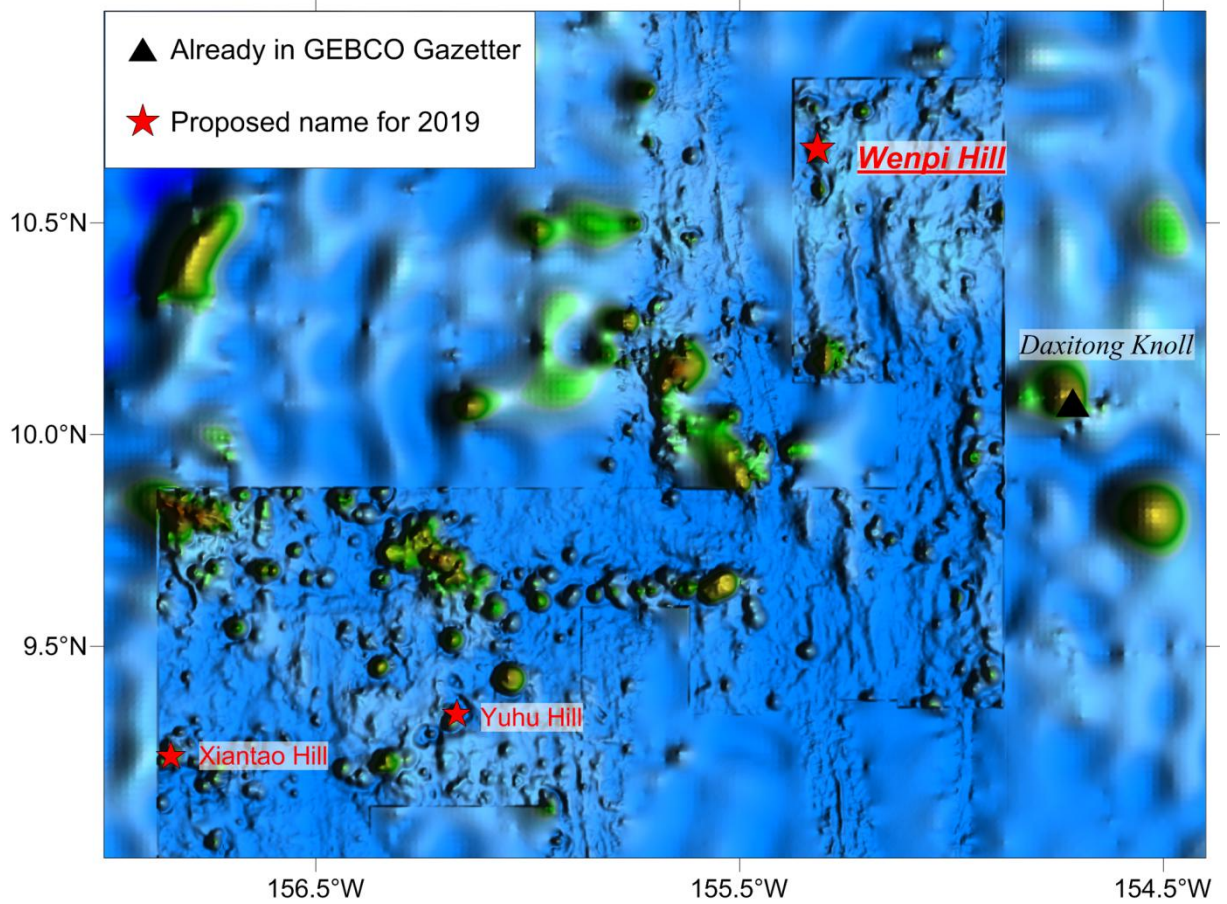


Fig.2 Regional bathymetry map with nearby features of Wenpi Hill

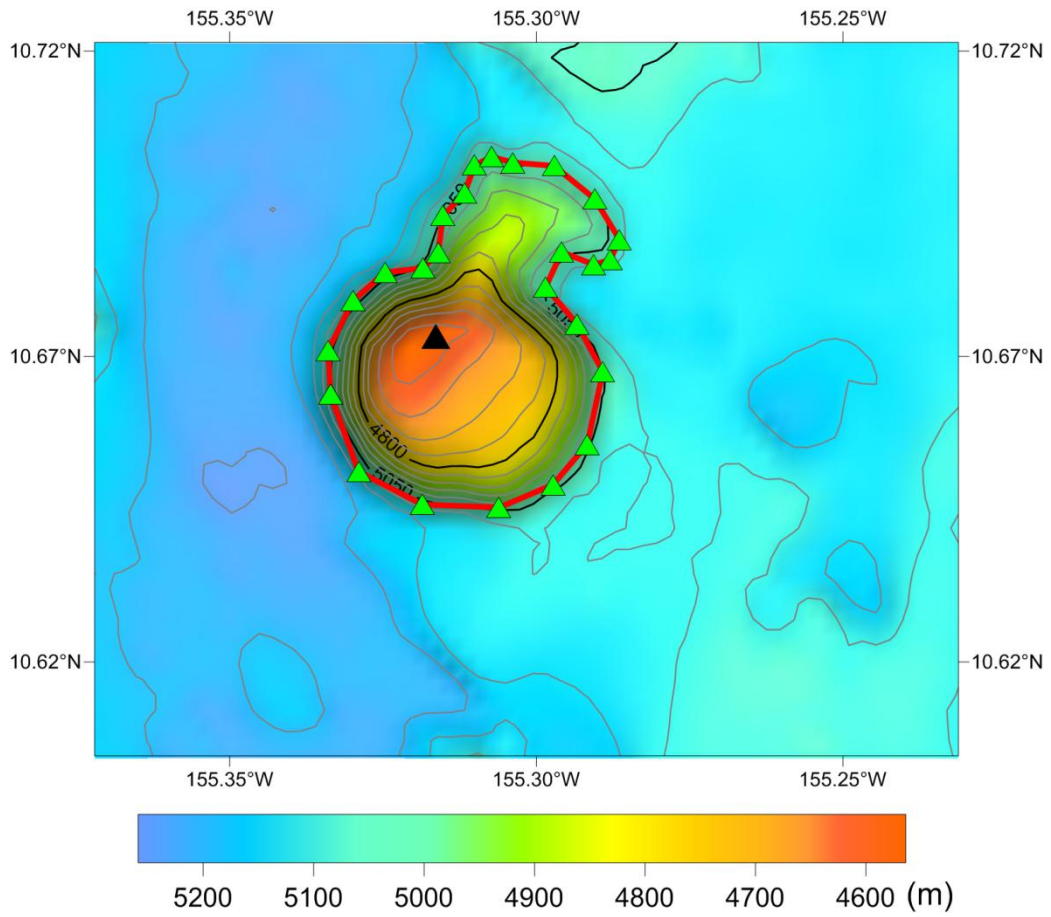


Fig.3 Wenpi Hill topographic map (isobath line spacing of 50m)

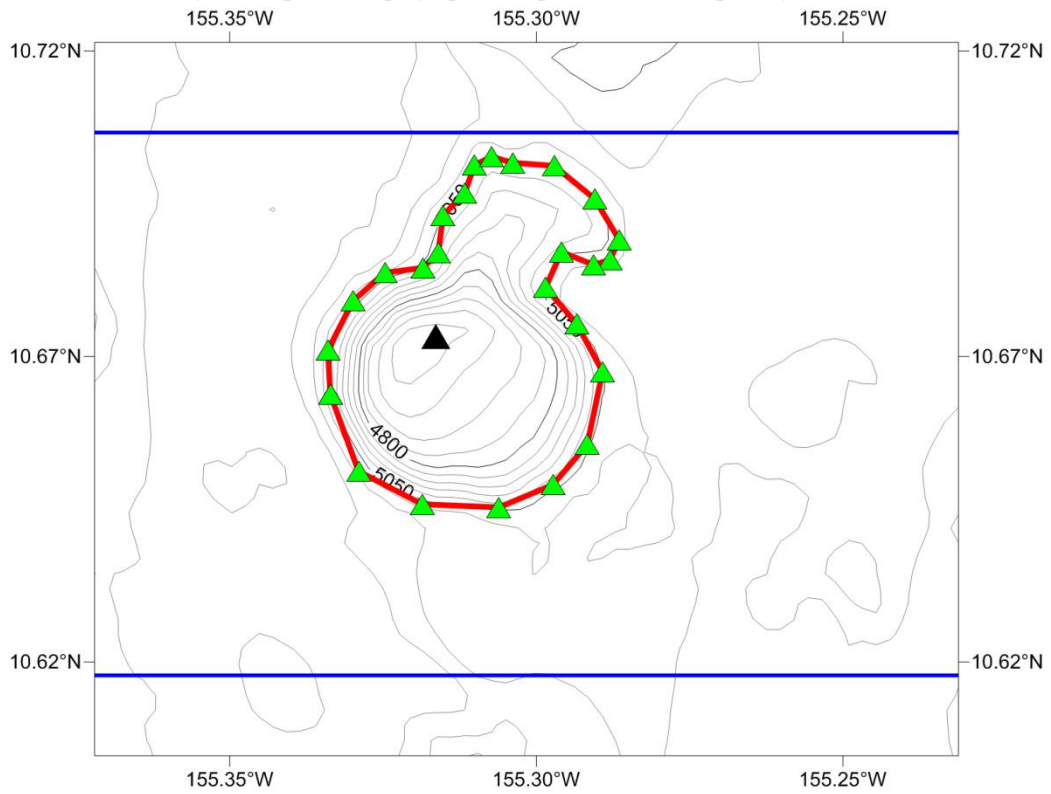


Fig.4 Wenpi Hill isobath line and survey line map (the isobath line spacing is 50m, the blue line is the survey line)

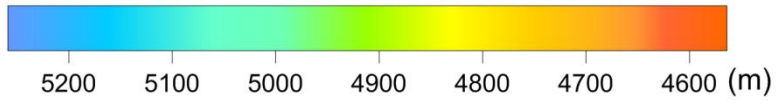
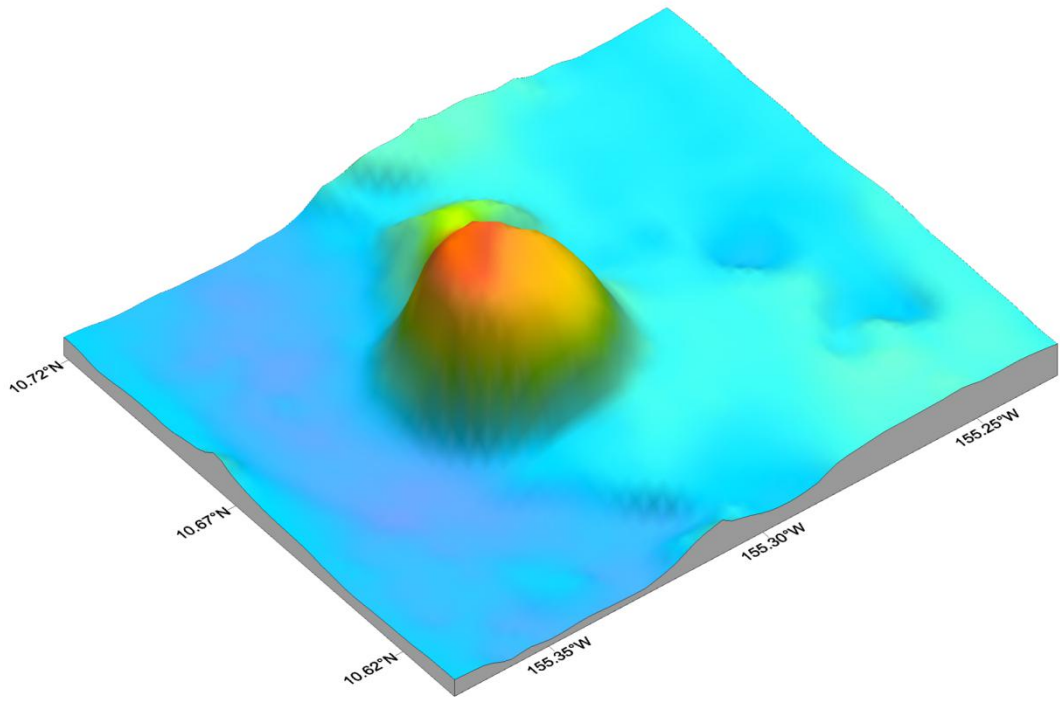


Fig.5 Three-dimensional topographic map of Wenpi Hill

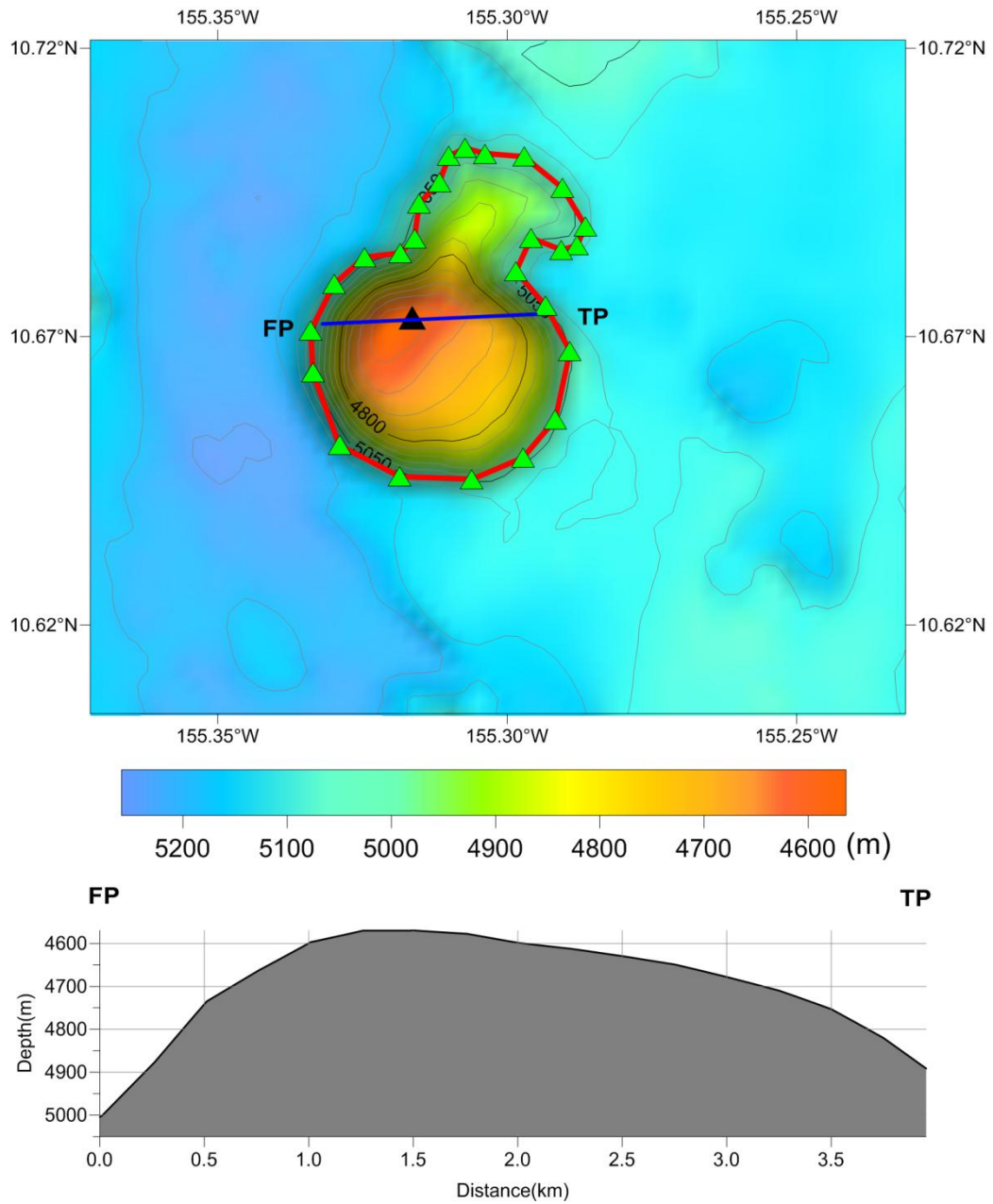


Fig.6 Terrain profile of Wenpi Hill