

International Hydrographic Organization	Intergovernmental Oceanographic Commission
--	---

Naming Proposal Form of Undersea Features on the International Seabed

Note: The form unit can be expanded when filling out this form.

To be named	Yuhu Hill	Located Ocean	East Pacific Ocean
-------------	------------------	---------------	--------------------

The geometry that best delimits the undersea features(Y/N)						
Point	Line	Polygon	Multi-points	Multi-lines*	Multiple polygons	Multiple geometric combinations
		Y				

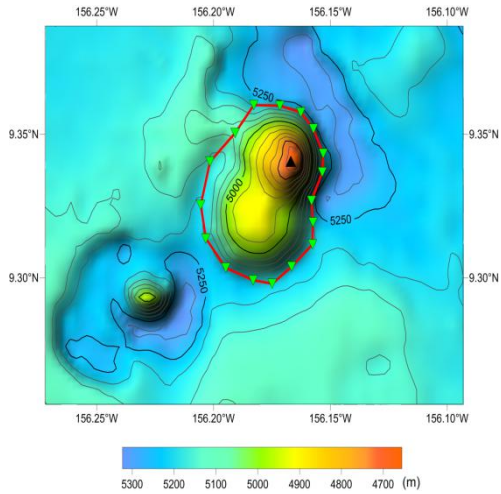
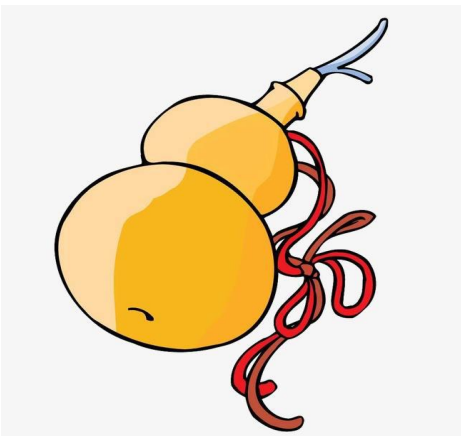
* The geometry should be clearly reflected when the following coordinates are provided.

	Latitude (e.g. 63°32.6'N)	Longitude (e.g. 046°21.3'W)
Coordinates	09°20.4'N(Vertex)	156°10.0'W(Vertex)
	09°21.0'N(Bottom)	156°11.4'W(Bottom)
	09°21.6'N	156°11.0'W
	09°21.6'N	156°10.3'W
	09°21.5'N	156°09.8'W
	09°21.1'N	156°09.4'W
	09°20.6'N	156°09.2'W
	09°20.2'N	156°09.2'W
	09°19.6'N	156°09.5'W
	09°19.2'N	156°09.5'W
	09°18.7'N	156°09.5'W
	09°18.2'N	156°10.0'W
	09°17.9'N	156°10.5'W
	09°18.0'N	156°11.0'W
	09°18.2'N	156°11.7'W
	09°18.8'N	156°12.2'W
	09°19.5'N	156°12.3'W
09°20.4'N	156°12.1'W	
09°21.0'N(Bottom)	156°11.4'W(Bottom)	

Description of Undersea Features	Maximum water depth	5241m	Slope	
	Minimum water depth	4655m	Shape	
	Height	586m	Scale	7km×5km

Description of Related Undersea Features	Yuhu Hill is located about 179 km southwest of Daxitong Knoll, with an overlooking shape of gourd.
--	---

Reference Chart/Map	Chart/Map labeled with the named undersea feature	
	Chart/Map labeled with the unnamed undersea feature	GEBCO 5.07
	Chart/Map labeled with area of the undersea feature	

<p>Reason for choosing the name (if it is a person's name, the relationship with the entity to be named should be stated):</p>	<p>The shape of this hill is like a calabash. Calabash is Yuhu in Chinese. So we name it as Yuhu Hill.</p>  
--	---

Facts of Discovery	Discovery date	Sept. to Nov., 2017
	Discoverer (individual, vessel)	Xiangyanghong06, Chinese scientific research ship

Obtained Survey Data Supporting for This Discovery, Including Line	Survey date	Sept. to Nov., 2017
	Survey vessel	Xiangyanghong06, Chinese scientific research ship
	Sounding equipment	Multibeam sounding system (EM122)
	Navigation type	GPS
	Estimated horizontal	≤0.08 nm

Control:	accuracy (nautical miles)	
	Line spacing (nautical mile)	5nm
	Support materials can be submitted as attachments in mock or digital form: see attachment	

NamingProposer	Name	China Minmetals Corporation
	Date	Apr. 8, 2018
	E-mail:	support@minmetals.com
	Unit and address	Block A, Minmetals Plaza, No. 3 Chaoyangmen North Street, Dongcheng District, Beijing

Remarks	<p>This proposal has been reviewed and approved by China Subcommittee on Undersea Feature Names (CCUFN).</p> <p>No.64 Fuchengmennei Street, Xicheng District, Beijing, China, 100812</p> <p>heyunxu@sina.com</p>
---------	--

Appendix

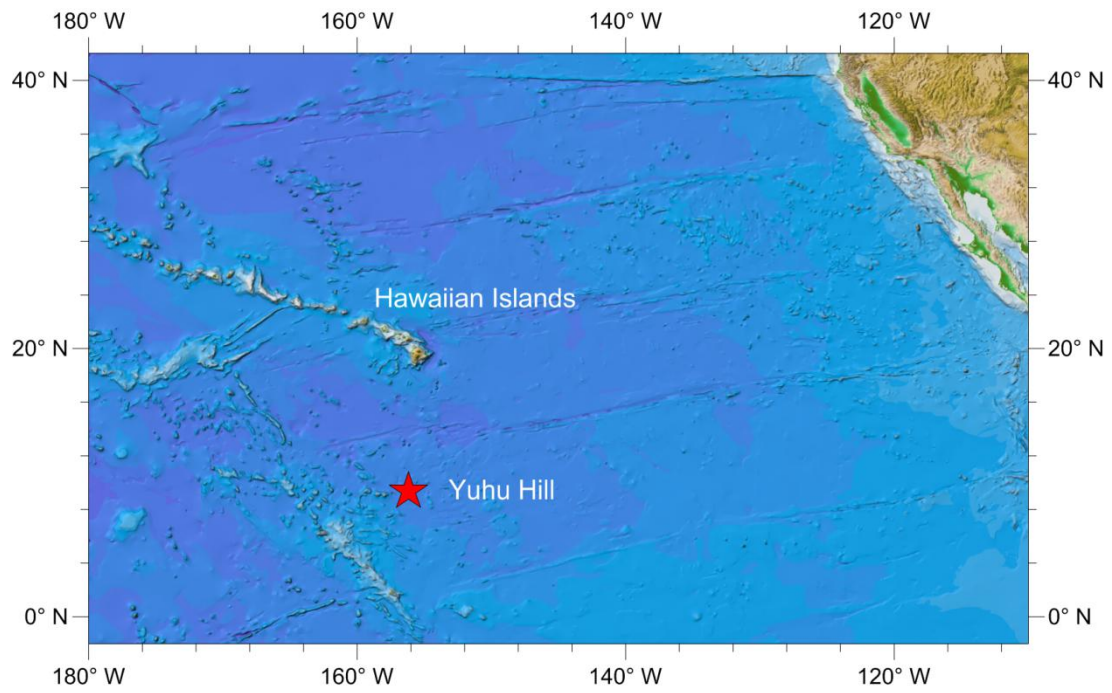


Fig.1 Yuhu Hill location index map

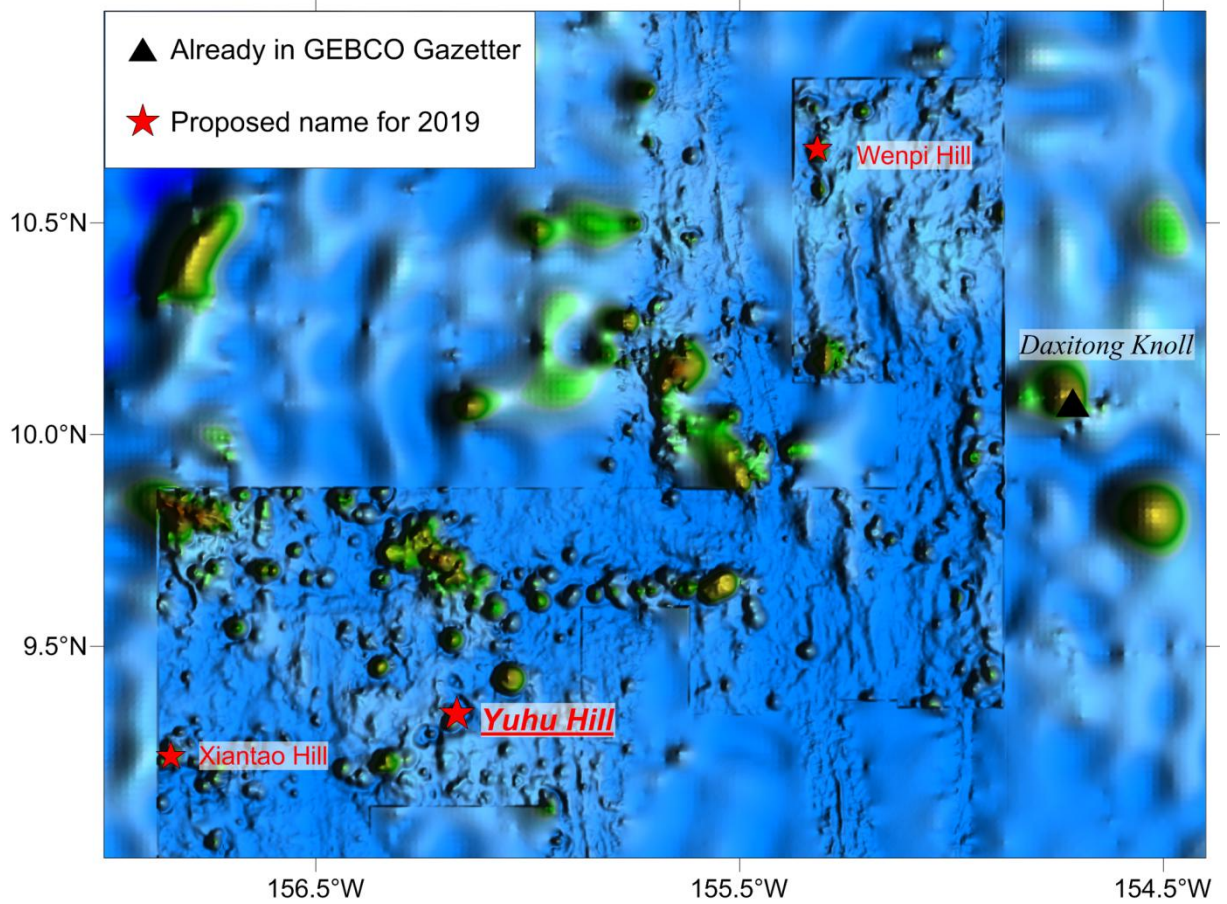


Fig.2 Regional bathymetry map with nearby features of Yuhu Hill

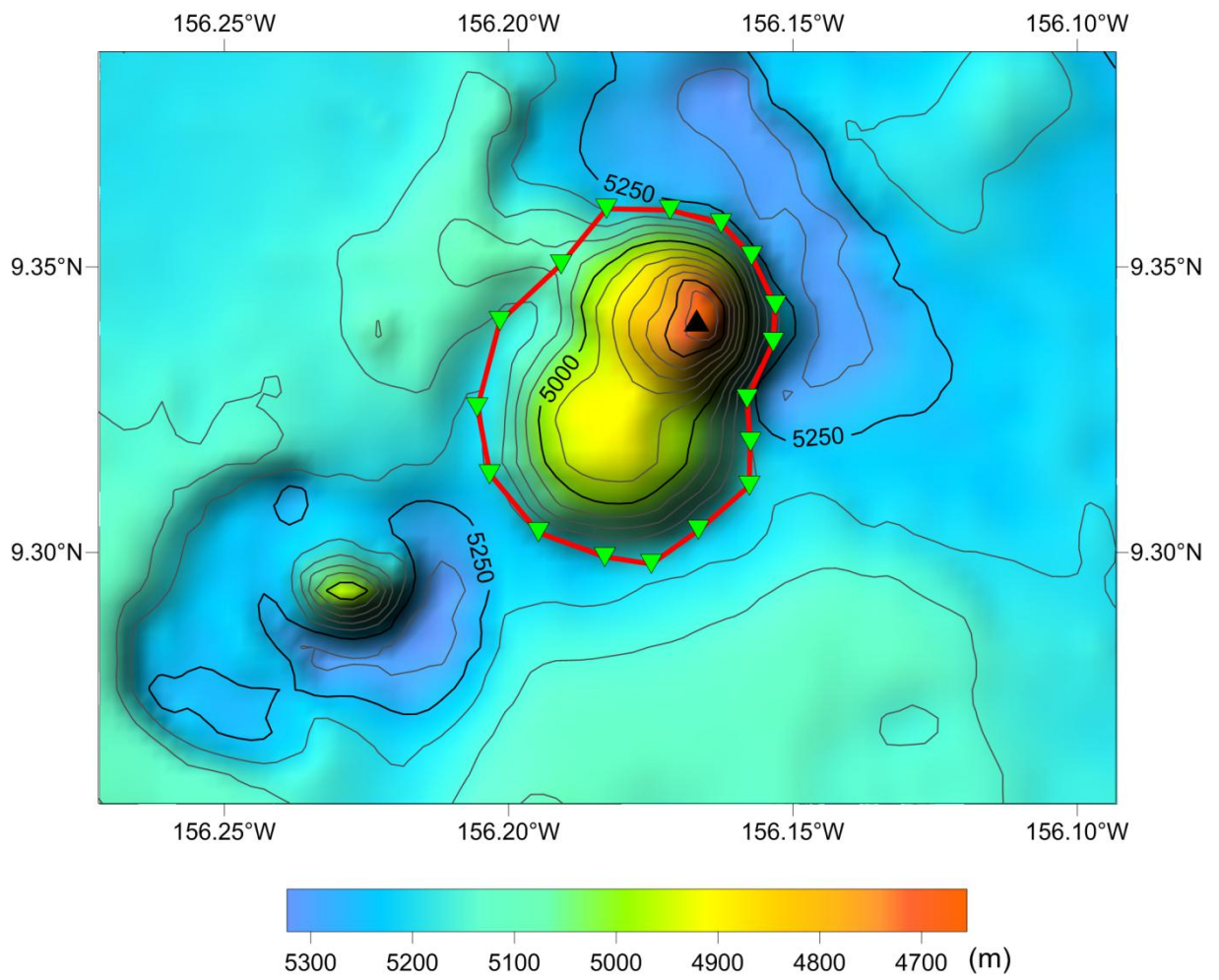


Fig.3 Yuhu Hill topographic map (isobath line spacing of 50m)

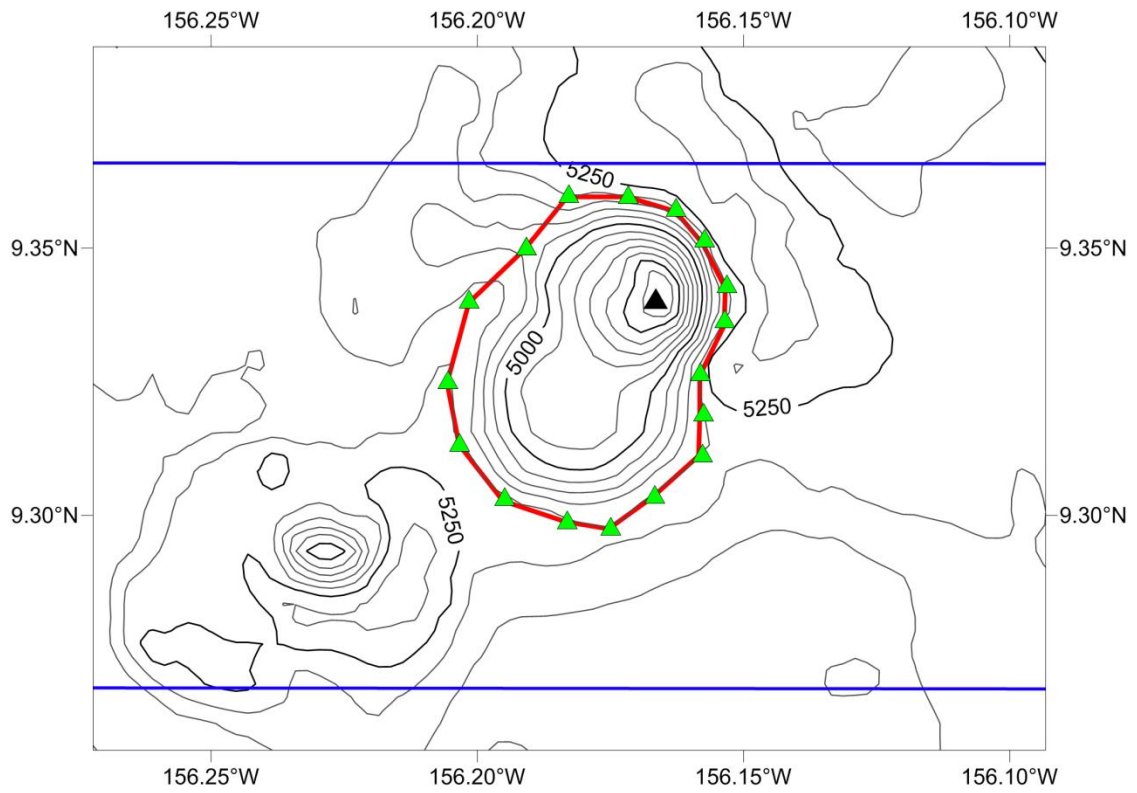


Fig.4 Yuhu Hill isobath line and survey line map (the isobath line spacing is 50m, the blue line is the survey line)

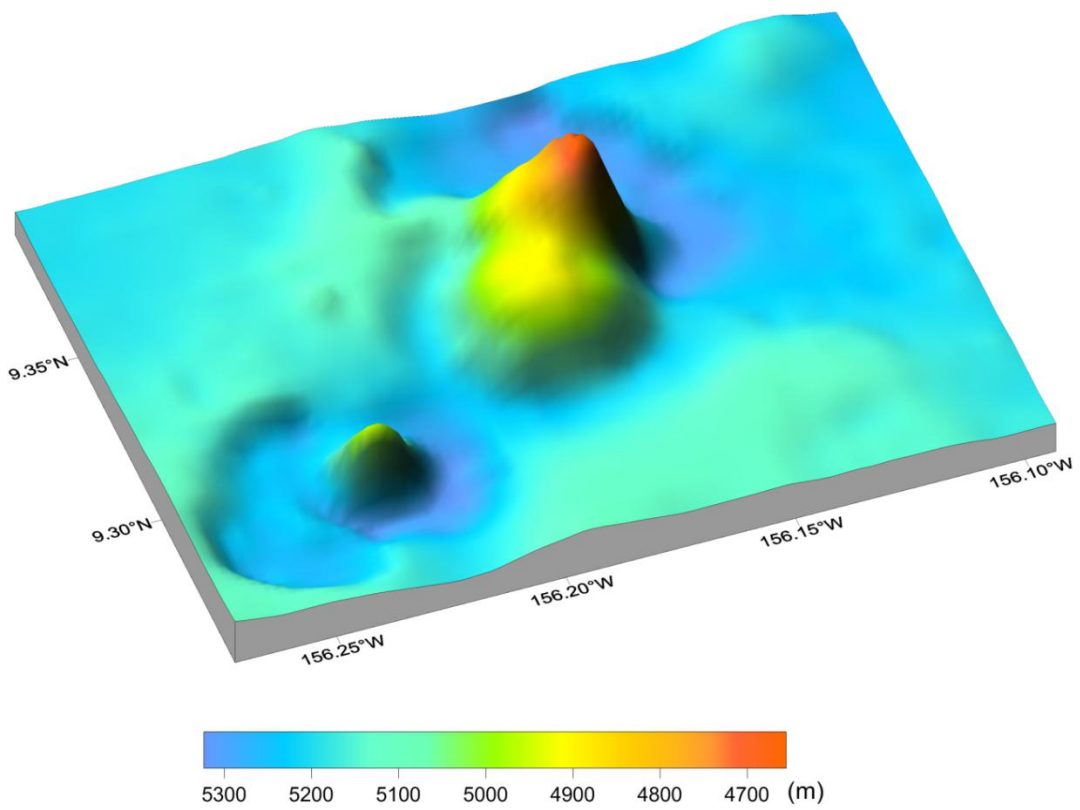


Fig.5 Three-dimensional topographic map of Yuhu Hill

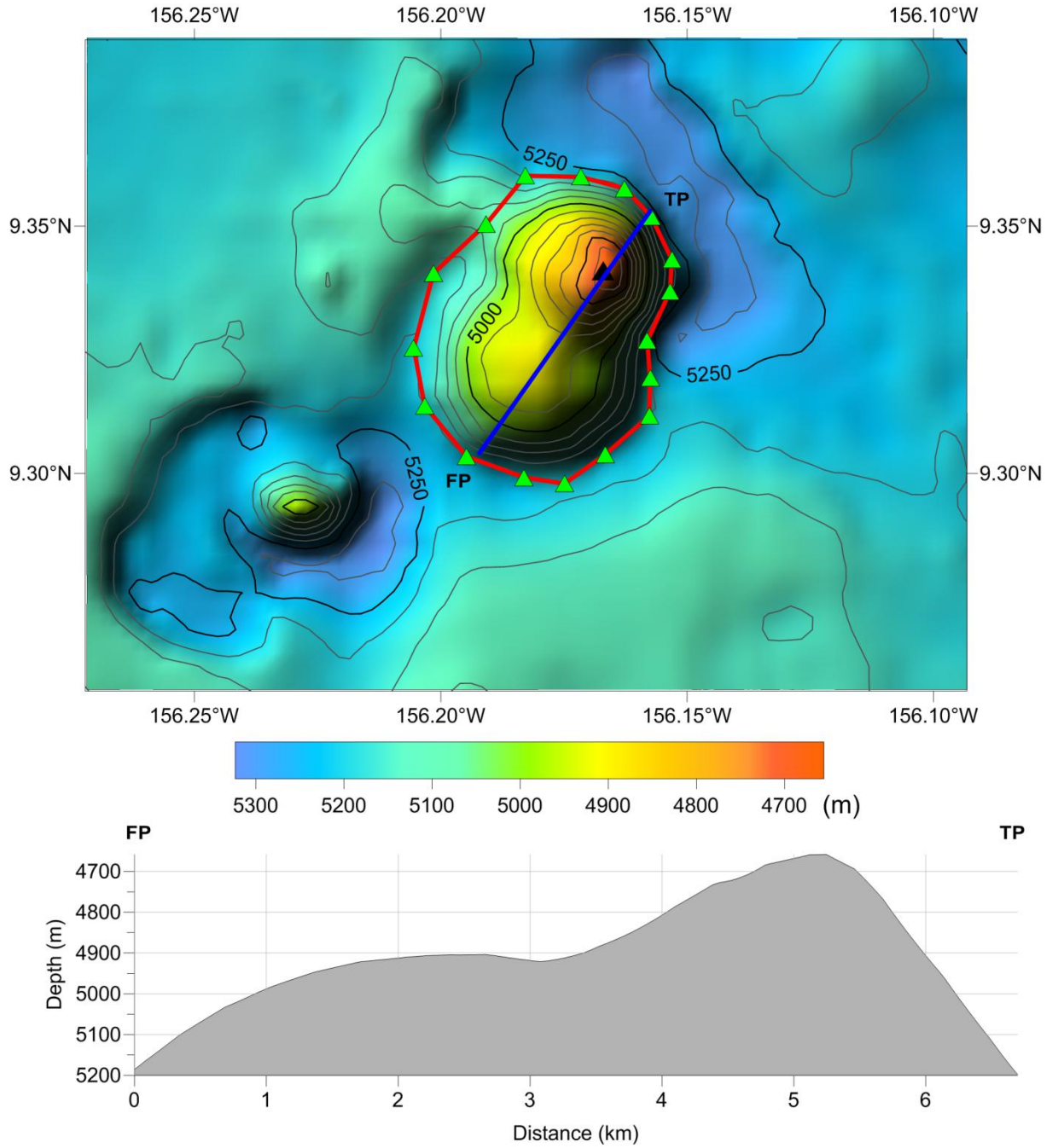


Fig.6 Terrain profile of Yuhu Hill