

International Hydrographic Organization	Intergovernmental Oceanographic Commission
--	---

Naming Proposal Form of Undersea Features on the International Seabed

Note: The form unit can be expanded when filling out this form.

To be named	Tianqing Hill	Located Ocean	East Pacific Ocean
-------------	----------------------	---------------	--------------------

The geometry that best delimits the undersea features(Y/N)						
Point	Line	Polygon	Multi-points	Multi-lines*	Multiple polygons	Multiple geometric combinations
		Y				

* The geometry should be clearly reflected when the following coordinates are provided.


	Latitude (e.g. 63°32.6'N)	Longitude (e.g. 046°21.3'W)
Coordinates	9°13.3'N (Vertex)	154°35.8'W (Vertex)
	9°12.2'N(Bottom)	154°35.8'W(Bottom)
	9°12.3'N	154°35.6'W
	9°12.5'N	154°35.1'W
	9°12.9'N	154°34.6'W
	9°13.4'N	154°34.4'W
	9°14'N	154°35.1'W
	9°14.2'N	154°35.5'W
	9°14.2'N	154°36'W
	9°14.1'N	154°36.3'W
	9°13.9'N	154°36.6'W
	9°13.6'N	154°36.8'W
	9°13.2'N	154°36.8'W
	9°12.8'N	154°36.8'W
	9°12.7'N	154°36.6'W
	9°12.5'N	154°36.5'W
9°12.3'N	154°36.2'W	
9°12.2'N(Bottom)	154°35.8'W(Bottom)	

Description of Undersea Features	Maximum water depth	5313m	Slope	
	Minimum water depth	4927m	Shape	Circular
	Height	386m	Scale	3.3km×4.0km

Description of Related Undersea Features	This hill is located in the central basin of Pacific Ocean, 41km northwest of Zhengtingfang Seamounts.
--	--

Reference Chart/Map	Chart/Map labeled with the named undersea feature	
---------------------	---	--

	Chart/Map labeled with the unnamed undersea feature	GEBCO5.07
	Chart/Map labeled with area of the undersea feature	

Reason for choosing the name (if it is a person's name, the relationship with the entity to be named should be stated):	<p>We name 7 features near to each other in this area after seven beautiful fairies in Chinese mythology. They are Tianchang, Tianxian, Tianqing, Tianyu, Tianshou, Tianyang and Tianrong. We name this feature after Tianqing, one fairy's name.</p> 
---	---

Facts of Discovery	Discovery date	Aug. 26, 2017
	Discoverer (individual, vessel)	XIANGYANGHONG 03, Chinese scientific research ship

Obtained Survey Data Supporting for This Discovery, Including Line Control:	Survey date	Aug. 26, 2017
	Survey vessel	XIANGYANGHONG 03, Chinese scientific research ship
	Sounding equipment	Seabeam3012
	Navigation type	VeriposWide area difference GPS
	Estimated horizontal accuracy (nautical miles)	≤0.08 nm
	Line spacing (nautical mile)	
	Support materials can be submitted as attachments in mock or digital form: see attachment	

NamingProposer	Name	China Ocean Mineral Resources R & D Association
	Date	May. 1, 2019
	E-mail:	comra@comra.org
	Unit and address	No. 1 Fuxingmenwai Street, Xicheng District, Beijing
	Co-sponsor (name, unit and address)	

Remarks	This proposal has been reviewed and approved by China Subcommittee on Undersea Feature Names (CCUFN). No.64 Fuchengmennei Street, Xicheng District, Beijing, China, 100812 heyunxu@sina.com
---------	---

Appendix

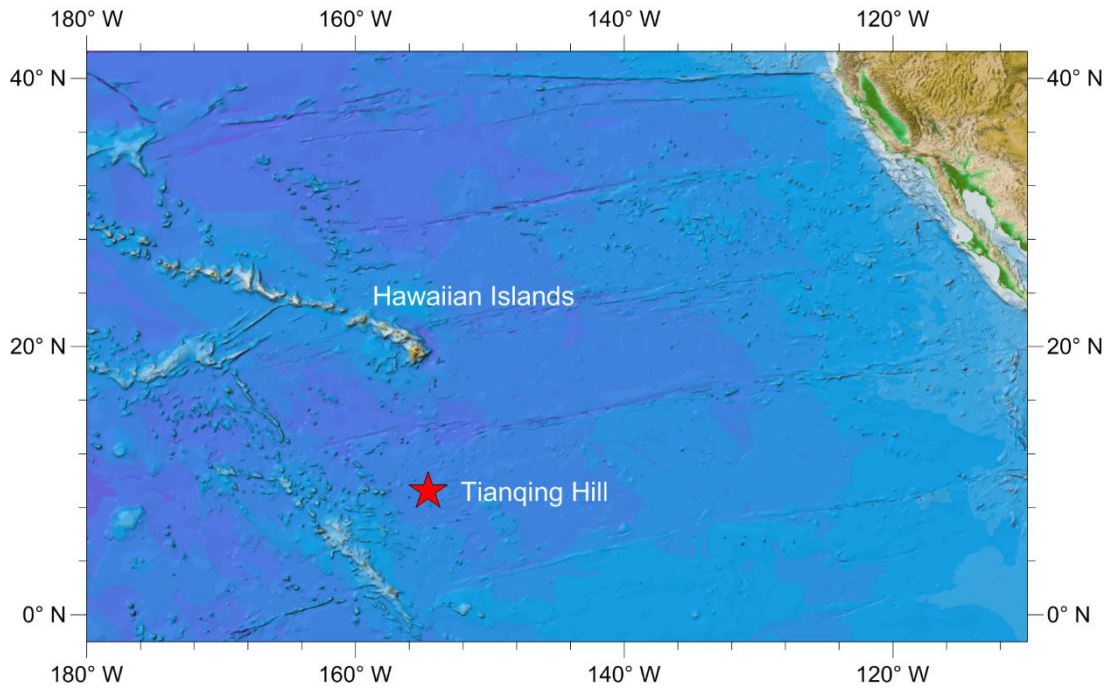


Fig.1 Tianqing Hill location index map

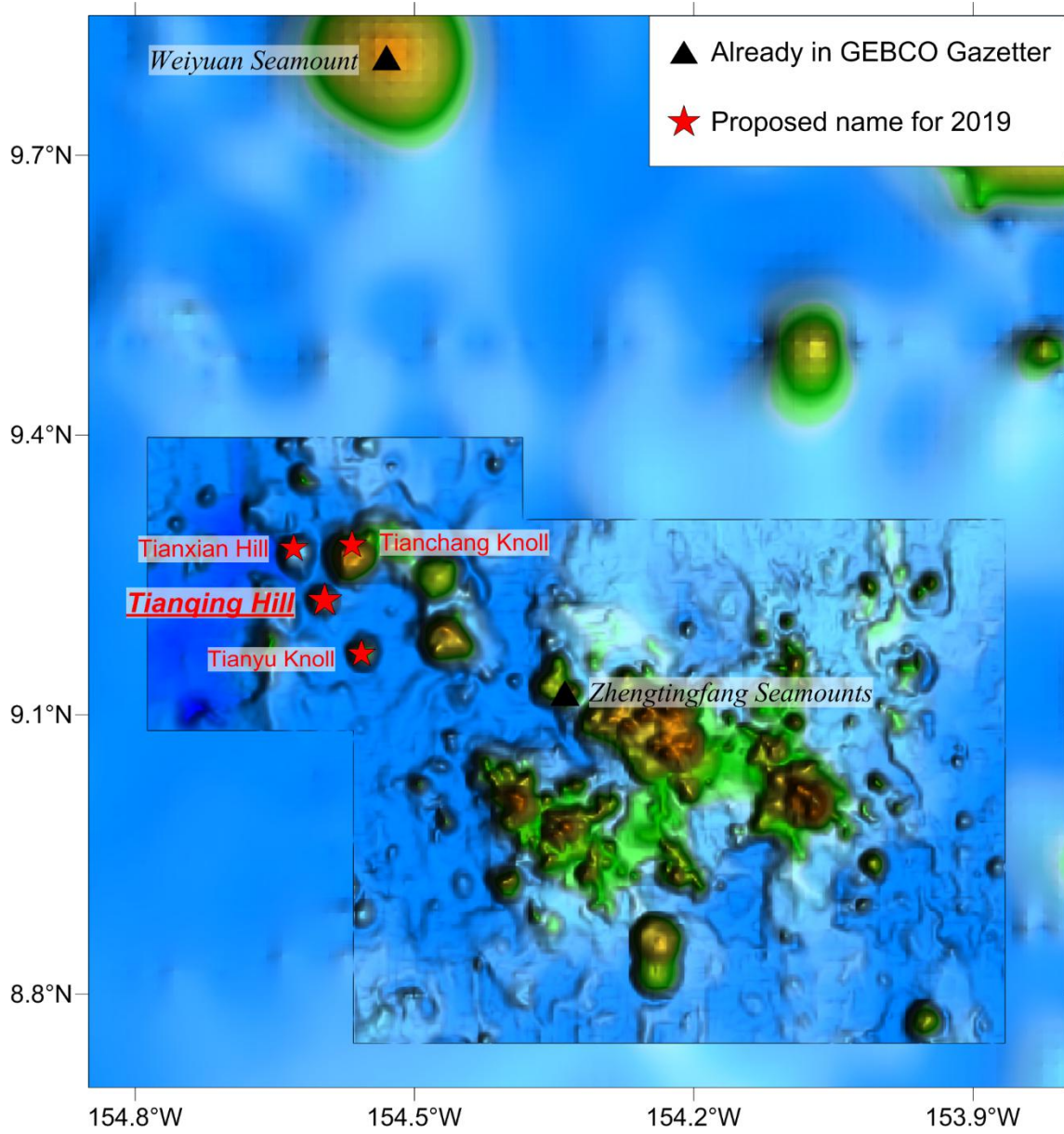


Fig.2 Regional bathymetry map with nearby features

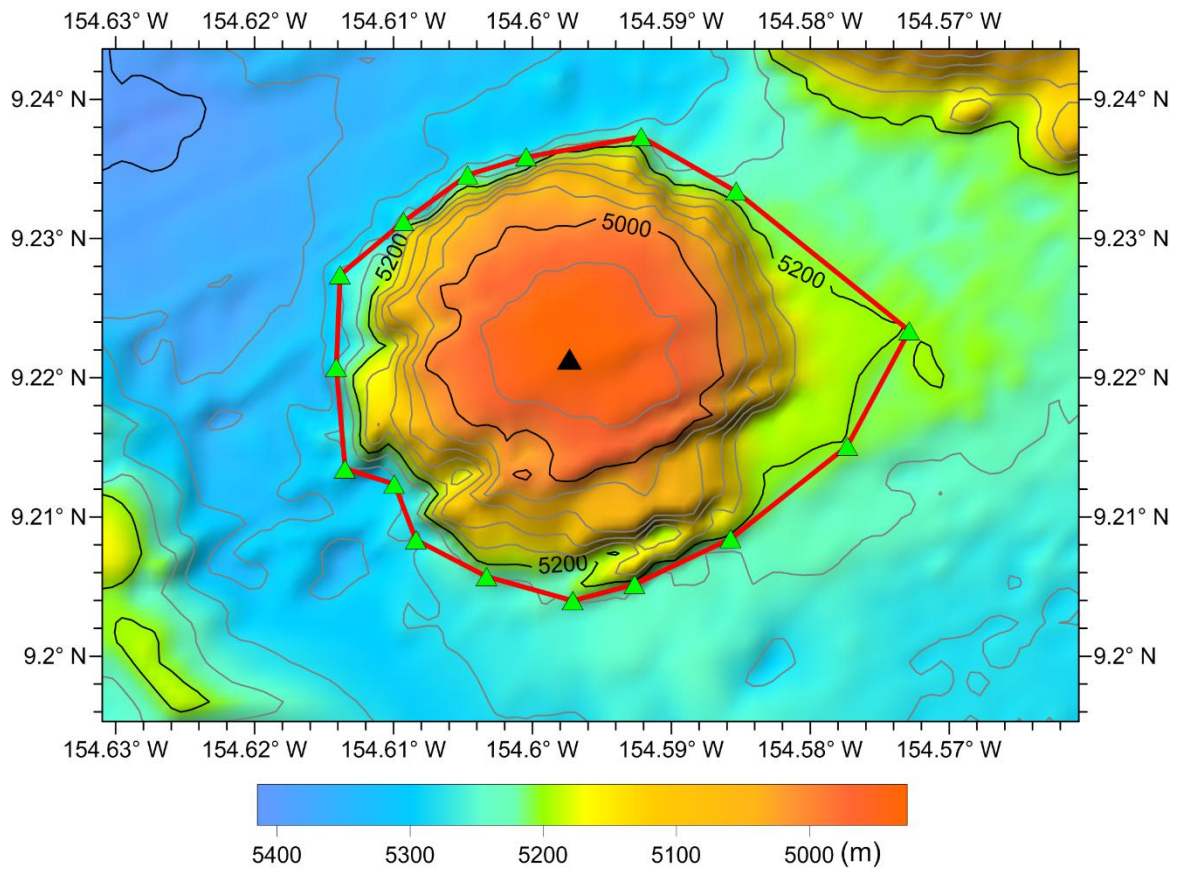


Fig.3 Tianqing Hill topographic map (isobath of 40m)

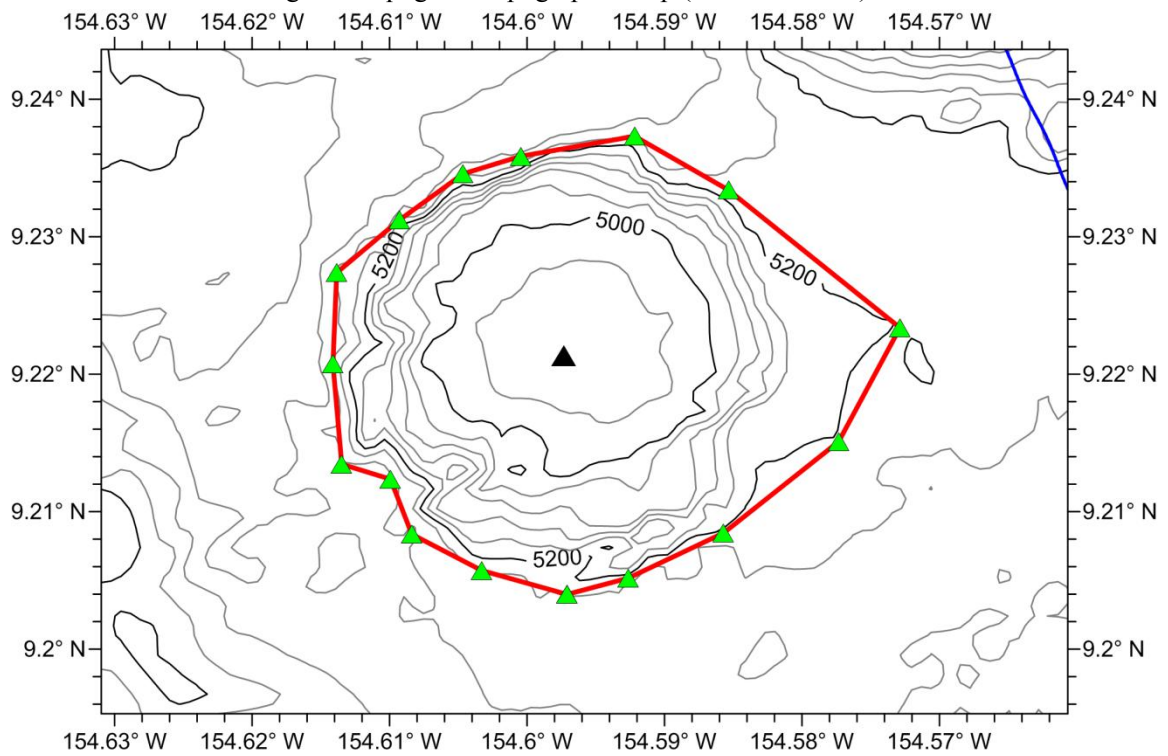


Fig.4 Tianqing Hill isobath line and survey line map (the isobath line spacing is 40m, the blue line is the survey line)

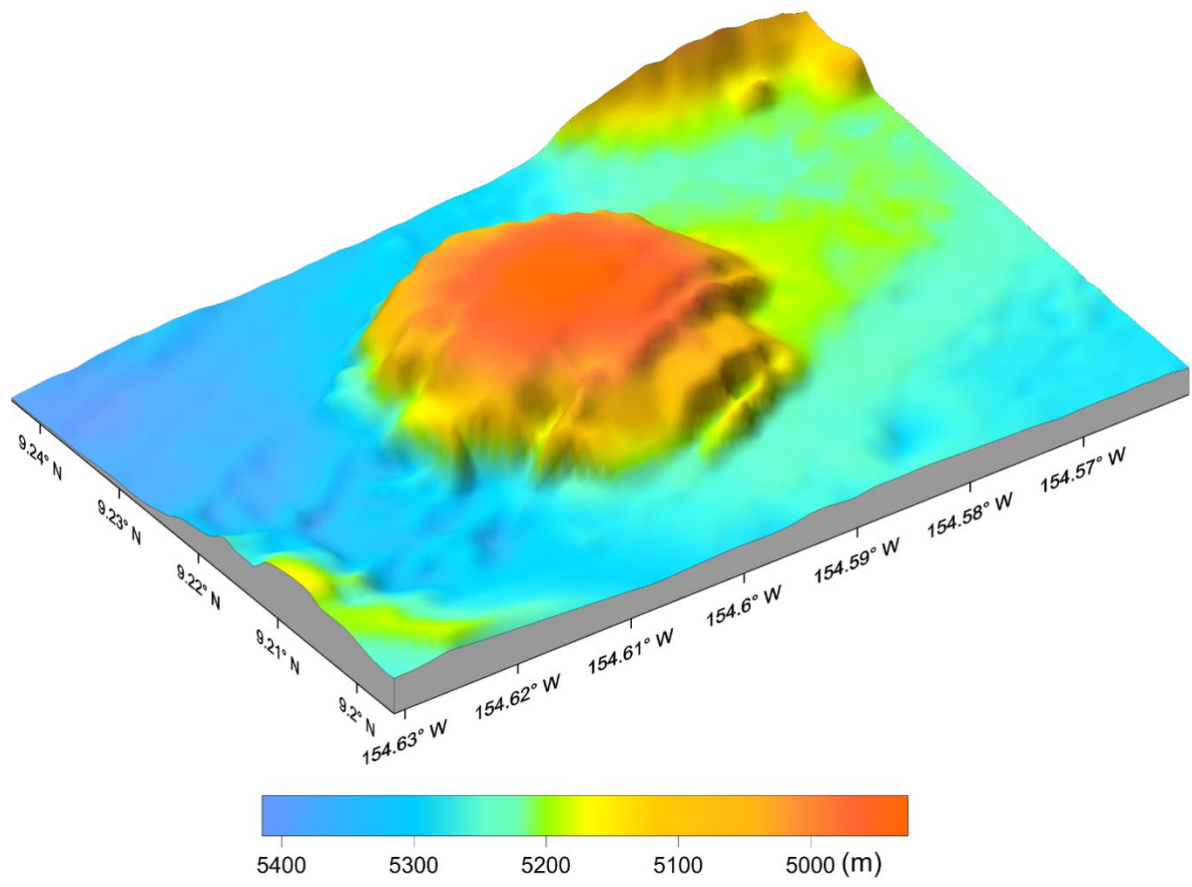


Fig.5 Three-dimensional topographic map of Tianqing Hill

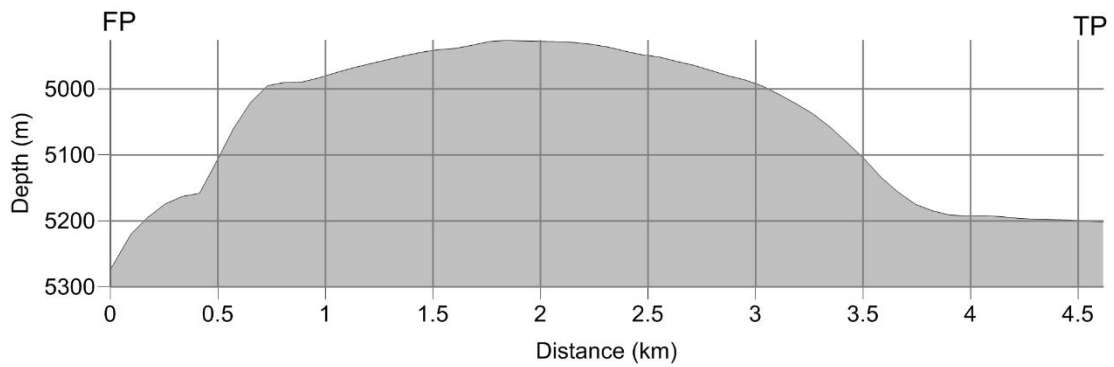
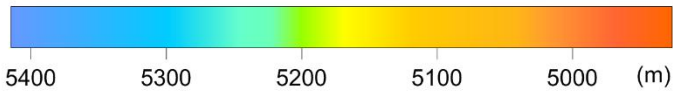
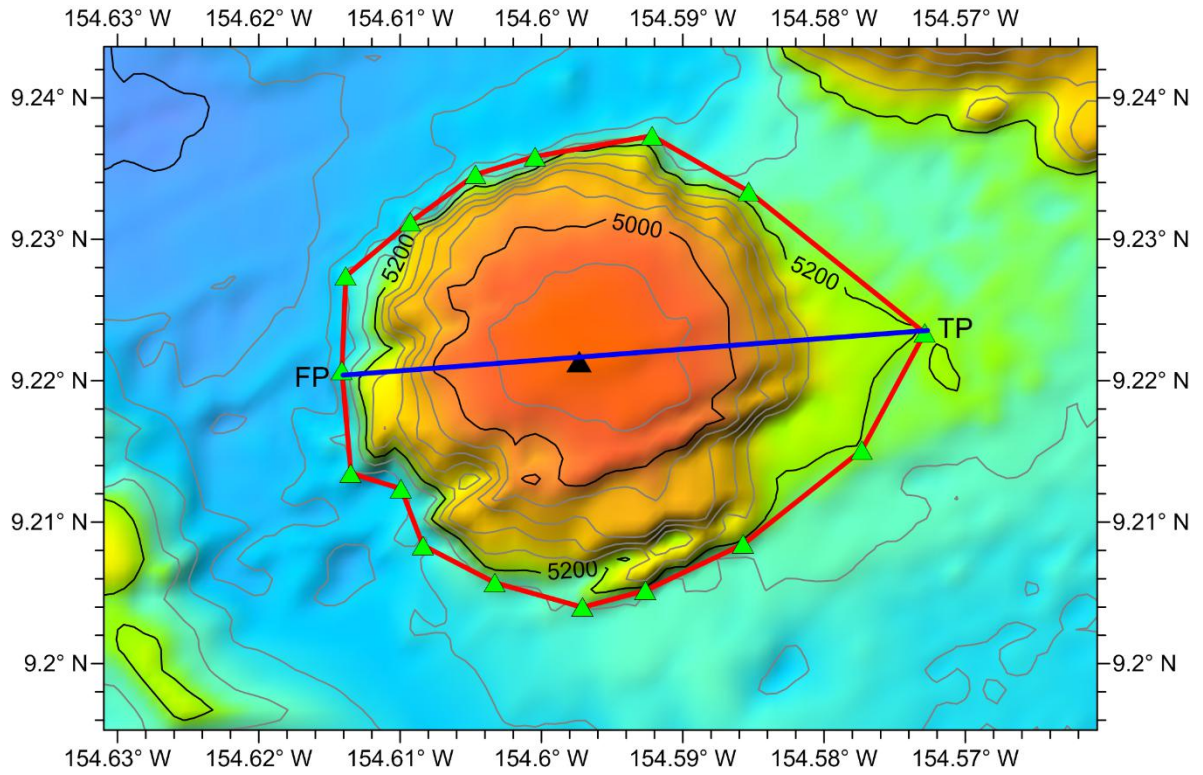


Fig.6 Terrain profile of Tianqing Hill