

<b>International Hydrographic Organization</b>	<b>Intergovernmental Oceanographic Commission</b>
--	---

**Naming Proposal Form of Undersea Features on the International Seabed**

Note: The form unit can be expanded when filling out this form.

To be named	<b>Baiyao Hill</b>	Located Ocean	East Pacific Ocean
-------------	--------------------	---------------	--------------------

The geometry that best delimits the undersea features(Y/N)						
Point	Line	Polygon	Multi-points	Multi-lines*	Multiple polygons	Multiple geometric combinations
		Y				


\* The geometry should be clearly reflected when the following coordinates are provided.

	Latitude (e.g. 63°32.6'N)	Longitude (e.g. 046°21.3'W)
Coordinates	12°00.1'N (Vertex)	142°16.4'W (Vertex)
	12°01.9'N (Bottom)	142°18.2'W (Bottom)
	12°02.4'N	142°17.0'W
	12°02.3'N	142°15.9'W
	12°01.8'N	142°14.9'W
	12°01.0'N	142°14.4'W
	11°59.8'N	142°14.5'W
	11°59.0'N	142°14.9'W
	11°58.1'N	142°15.9'W
	11°57.4'N	142°17.2'W
	11°57.0'N	142°18.0'W
	11°57.0'N	142°19.0'W
	11°57.7'N	142°20.3'W
	11°58.2'N	142°20.9'W
	11°58.7'N	142°21.4'W
	11°59.2'N	142°21.3'W
	12°00.2'N	142°21.1'W
	12°01.0'N	142°20.6'W
	12°01.4'N	142°19.8'W
	12°01.8'N	142°19.2'W
12°01.8'N	142°18.9'W	
12°01.8'N	142°18.3'W	
12°01.9'N	142°18.2'W	
12°01.9'N(Bottom)	142°18.2'W(Bottom)	

Description of Undersea Features	Maximum water depth	5037m	Slope	
	Minimum water depth	4325m	Shape	
	Height	712m	Scale	13km×9km

Description of Related Undersea Features	<b>Baiyao Hill</b> is located about 94km northwest of Egiazarov Seamount, with an overlooking shape of ellipse.
--	---

Reference Chart/Map	Chart/Map labeled with the named undersea feature	GEBCO 5.07
	Chart/Map labeled with the unnamed undersea feature	
	Chart/Map labeled with area of the undersea feature	

Reason for choosing the name (if it is a person's name, the relationship with the entity to be named should be stated):	<p>We name 6 features in this area after 6 kinds of seabird of family Hydrobatidae, which usually appear in the Pacific Ocean. The Leach's storm petrel is a typical oceanic seabird of family Hydrobatidae, order Procellariiformes. It is distributed in Pacific Ocean and other oceans. This hill is named after Baiyao, the name of the Leach's storm petrel in Chinese.</p> 
---	--

Facts of Discovery	Discovery date	Sep. to Nov., 2017
	Discoverer (individual, vessel)	Xiangyanghong06, Chinese scientific research ship

Obtained Survey Data Supporting for This Discovery, Including Line Control:	Survey date	Sep. to Nov., 2017
	Survey vessel	Xiangyanghong 06, Chinese scientific research ship
	Sounding equipment	Multibeam sounding system (EM122)
	Navigation type	GPS
	Estimated horizontal accuracy (nautical miles)	≤0.08 nm
	Line spacing (nautical mile)	5nm
Support materials can be submitted as attachments in mock or digital form: see attachment		

---

NamingProposer	Name	China Minmetals Corporation
	Date	April 8, 2018
	E-mail:	support@minmetals.com
	Unit and address	Block A, Minmetals Plaza, No. 3 Chaoyangmen North Street, Dongcheng District, Beijing
Remarks	This proposal has been reviewed and approved by China Subcommittee on Undersea Feature Names (CCUFN). No.64 Fuchengmennei Street, Xicheng District, Beijing, China, 100812 heyunxu@sina.com	

Appendix

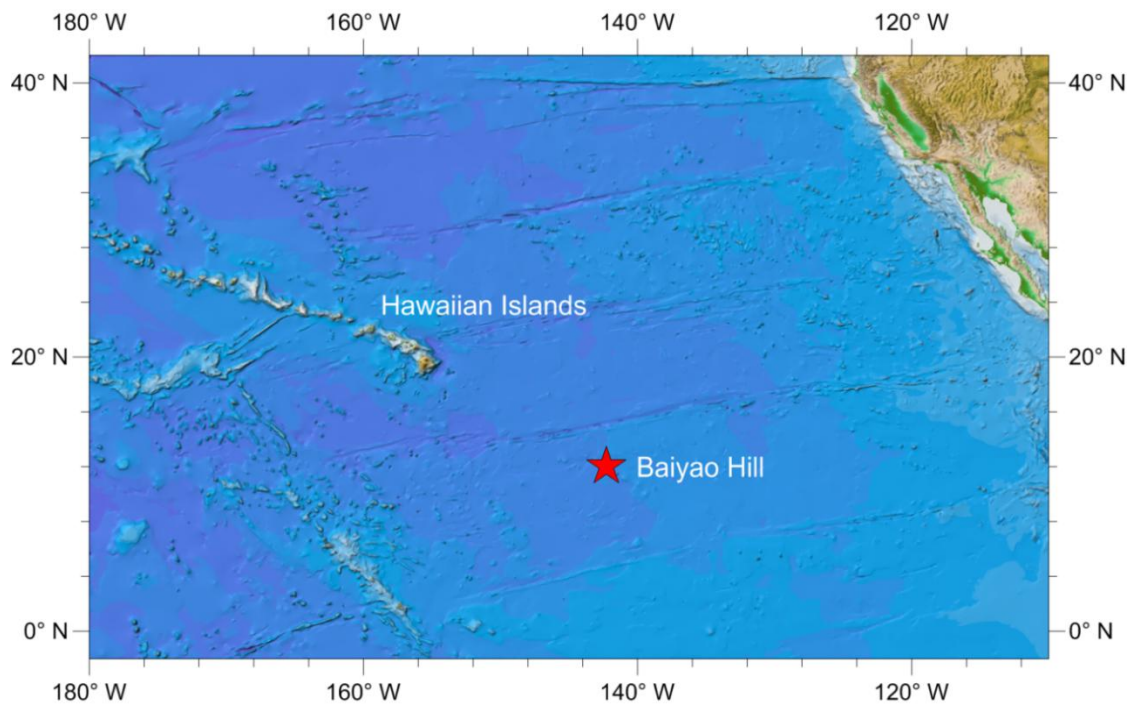


Fig.1 Baiyao Hill location index map

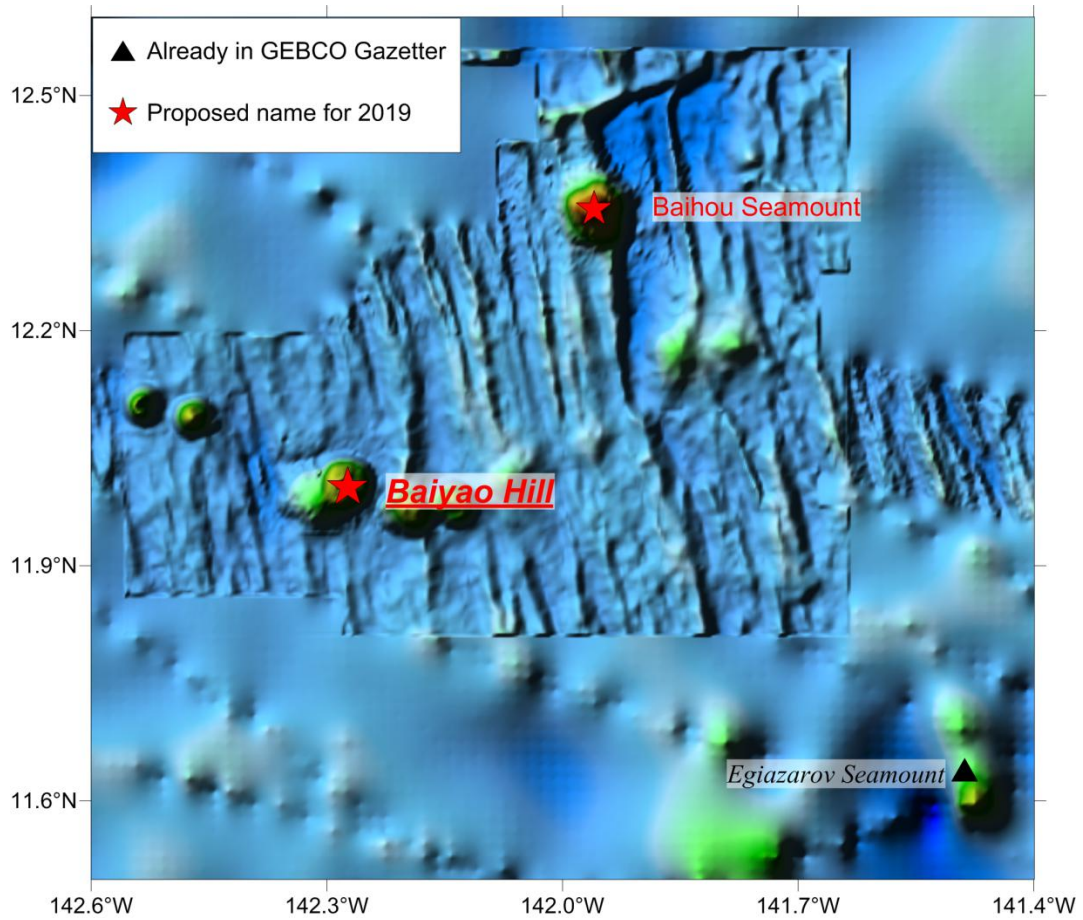


Fig.2 Regional bathymetry map with nearby features of Baiyao Hill

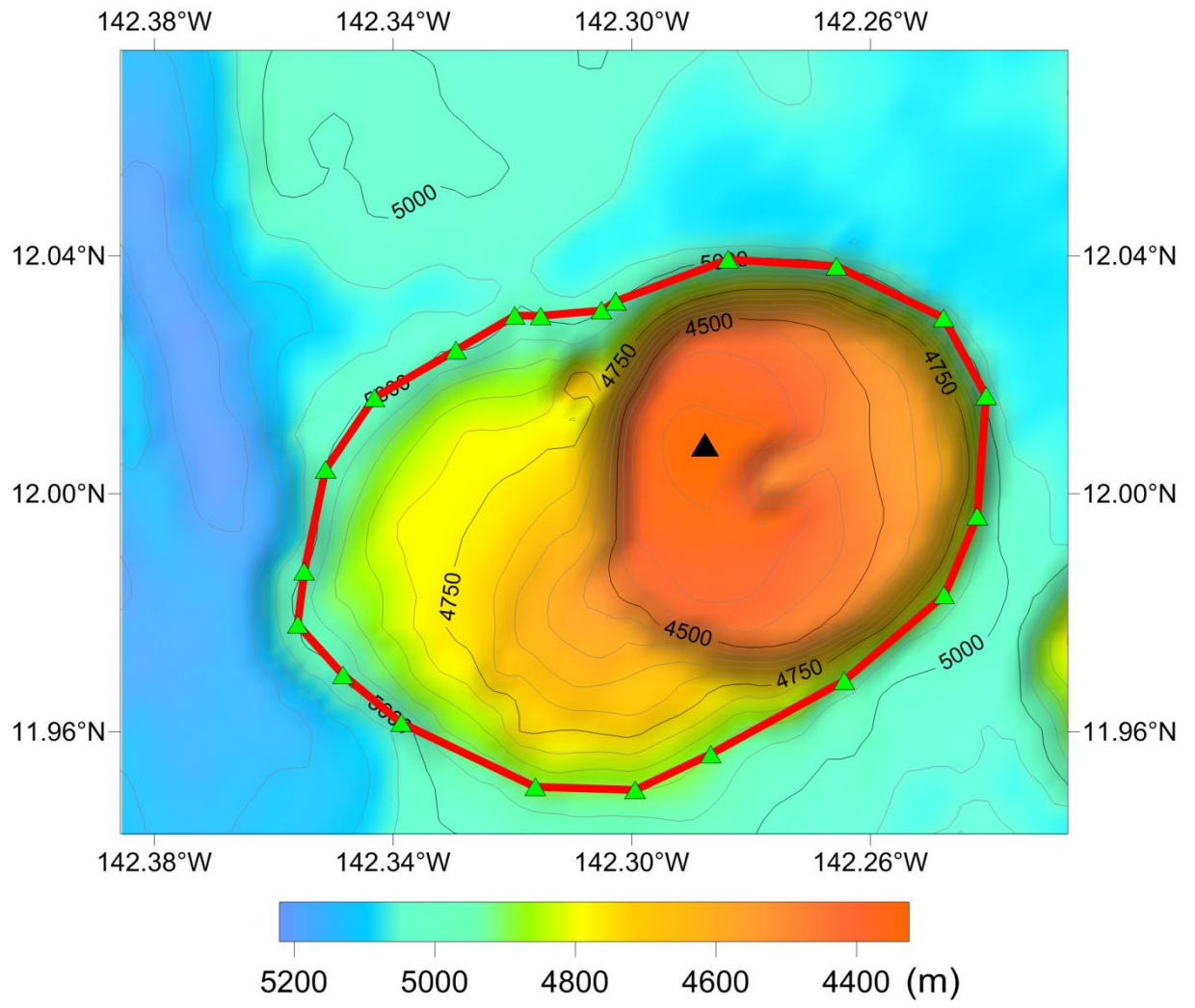


Fig.3 Baiyao Hill topographic map (isobath line spacing of 50m)

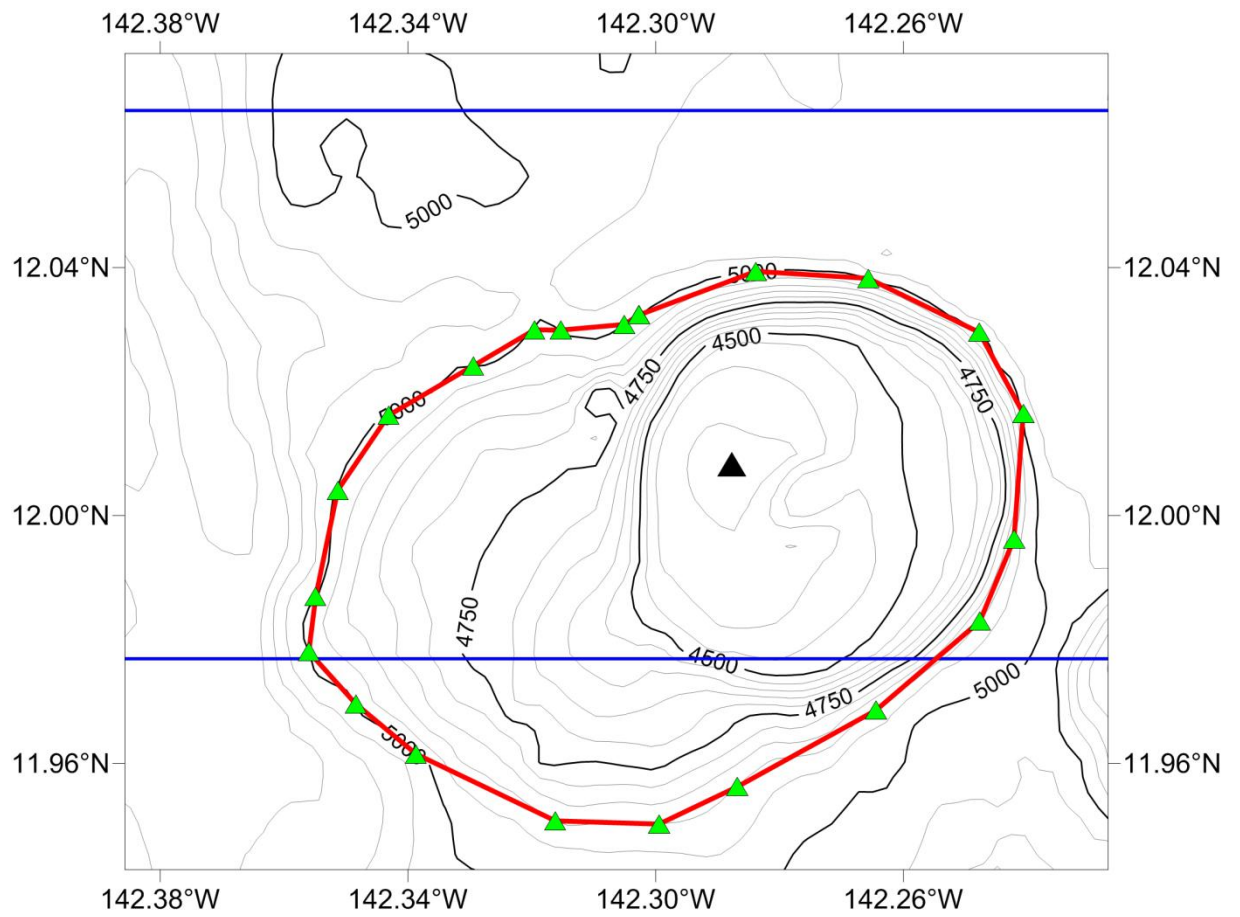


Fig.4 Baiyao Hill isobath line and survey line map (the isobath line spacing is 50m, the blue line is the survey line)

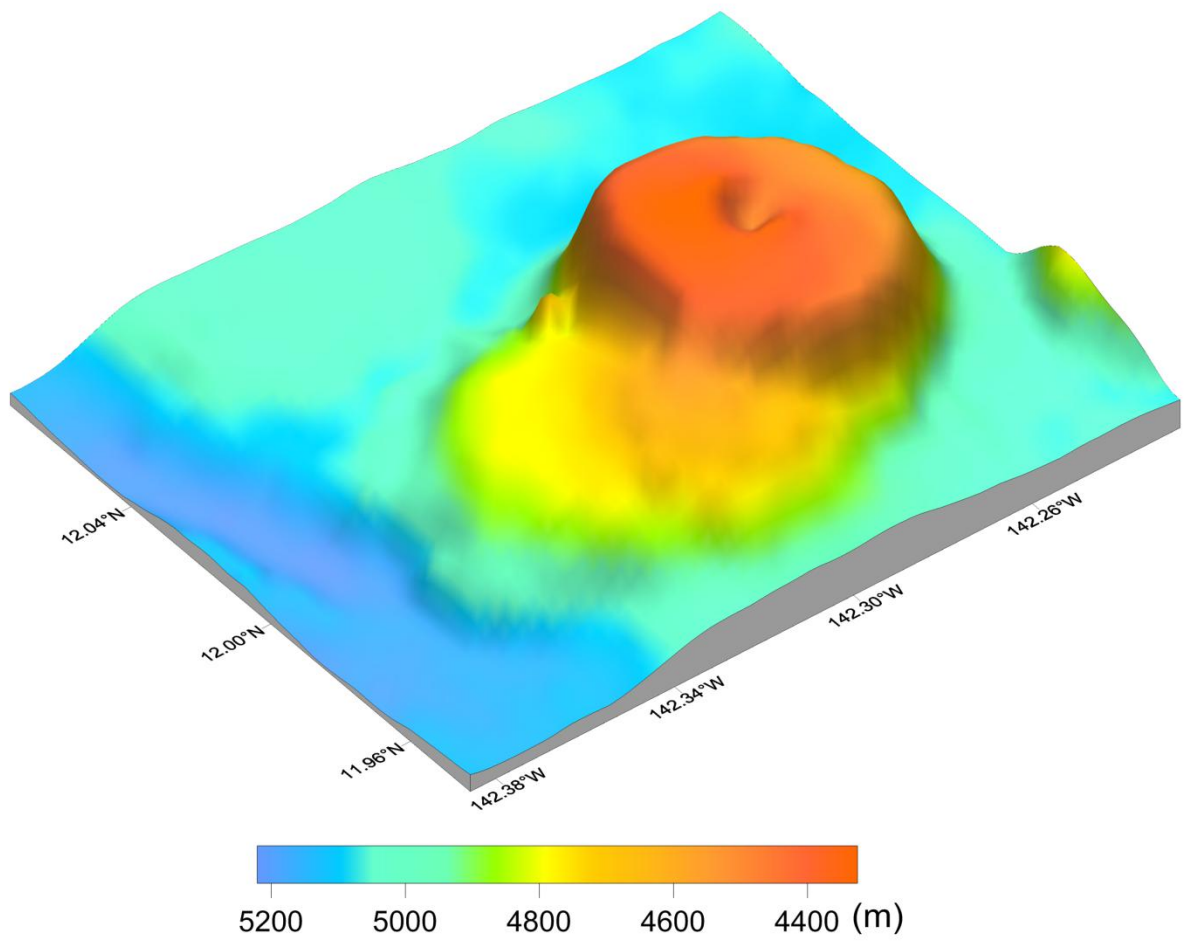


Fig.5 Three-dimensional topographic map of Baiyao Hill

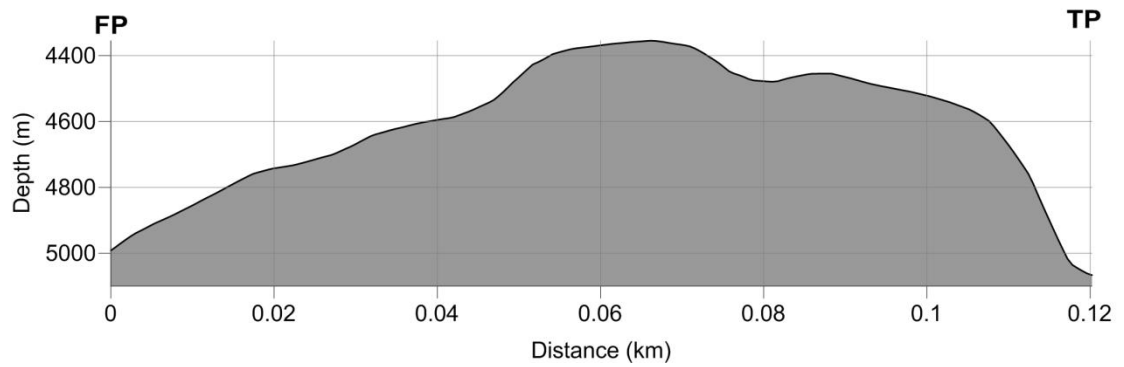
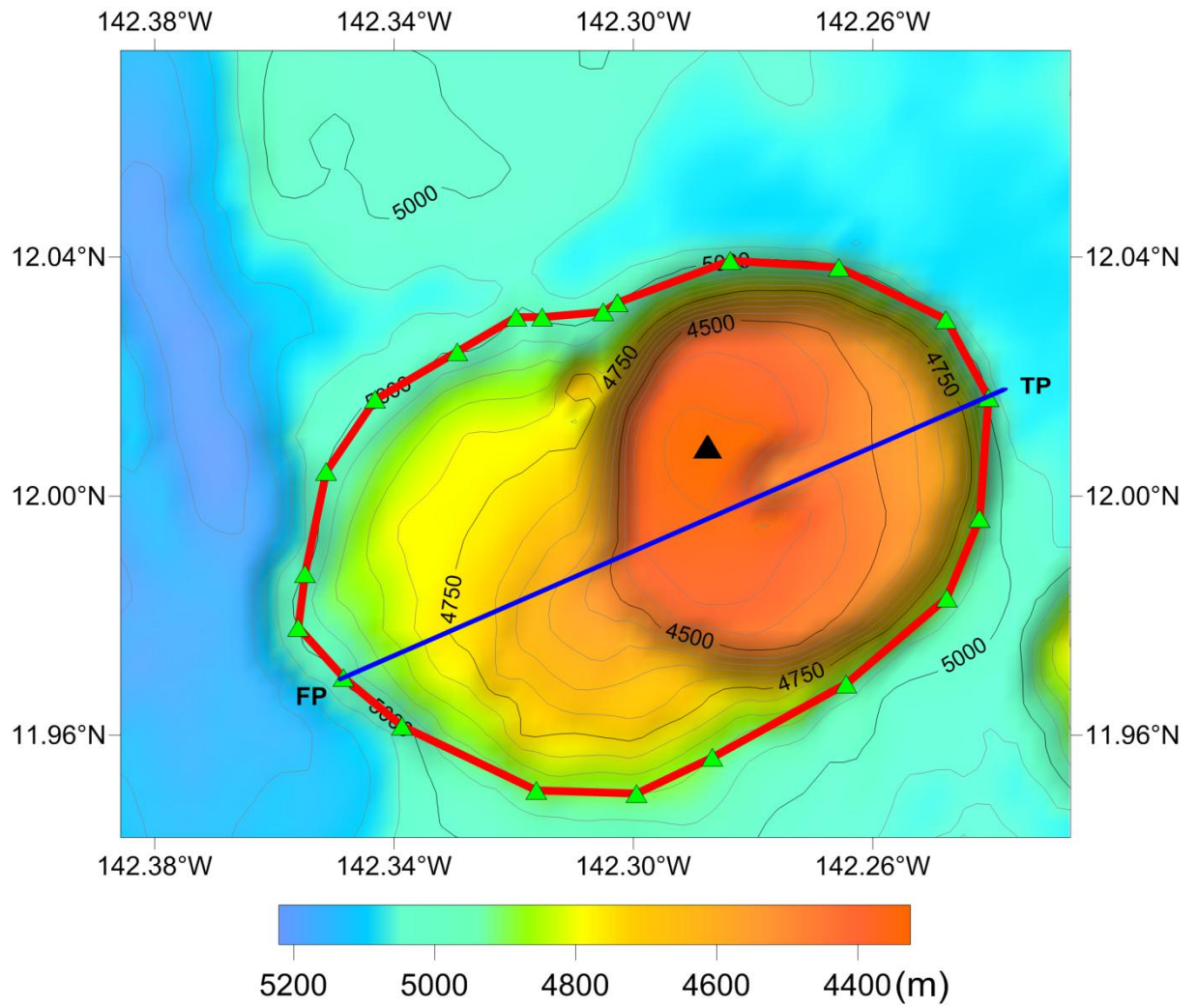


Fig.6 Terrain profile of Baiyao Hill