

UNDERSEA FEATURE NAME PROPOSAL
(See IHO-IOC Publication B-6 and NOTE overleaf)

Note: The boxes will expand as you fill the form.

Name Proposed:	Arrhenius Seamount	Ocean or Sea:	N/A
-----------------------	--------------------	----------------------	-----

Geometry that best defines the feature (Yes/No) :						
Point	Line	Polygon	Multiple points	Multiple lines*	Multiple polygons*	Combination of geometries*
		Yes				

* Geometry should be clearly distinguished when providing the coordinates below.

Coordinates:	Lat. (e.g. 63°32.6'N)	Long. (e.g. 046°21.3'W)
	24°17.68'N	159°10.40'E
	24°19.93'N	159°12.53'E
	24°20.90'N	159°16.91'E
	24°19.63'N	159°19.23'E
	24°16.40'N	159°20.63'E
	24°14.46'N	159°20.89'E
	24°13.54'N	159°19.03'E
	24°12.08'N	159°15.78'E
	24°12.63'N	159°12.93'E
	24°13.48'N	159°11.47'E

Feature Description:	Maximum Depth:	5,502 m	Steepness :	N/A
	Minimum Depth :	2,978 m	Shape :	Equidimensional
	Total Relief :	2,524 m	Dimension/Size :	15 km × 15 km

Associated Features:	Scripps Guyot
-----------------------------	---------------

Chart/Map References:	Shown Named on Map/Chart:	Japanese chart #6727 (to be revised in July 26, 2019)
	Shown Unnamed on Map/Chart:	
	Within Area of Map/Chart:	

Reason for Choice of Name (if a person, state how associated with the feature to be named):	Gustaf Arrhenius (1922-2019) was a Swedish-American oceanographer at the Scripps Institution of Oceanography from 1953-2005. He was considered one of Scripps' most distinguished scientists. His research into deep-sea sedimentation during the 1950s defined the major sedimentary processes and provinces of the ocean and opened the door for the studies of ocean and climate history that followed https://scripps.ucsd.edu/news/obituary-notice-gustaf-arrhenius-1922-2019 .
--	--

Discovery Facts:	Discovery Date:	Nov. 2000
	Discoverer (Individual, Ship):	Japanese survey vessel "Takuyo"

Supporting Survey Data, including	Date of Survey:	Nov. - Dec. 2000
--	------------------------	------------------

Track Controls:	Survey Ship:	Japanese survey vessel "Takuyo"
	Sounding Equipment:	Multibeam echo sounder Seabeam 2112
	Type of Navigation:	GPS without Selective Availability
	Estimated Horizontal Accuracy, in nautical miles (M):	0.014 nm (26 m)
	Survey Track Spacing:	10 nm
	Supporting material can be submitted as Annex in analog or digital form.	

Proposer(s):	Name(s):	JCUFN
	Date:	June 4, 2019
	E-mail:	ico@jodc.go.jp
	Organization and Address:	Hydrographic and Oceanographic Department, Japan Coast Guard Kasumigaseki 3-1-1, Chiyoda-ku, Tokyo 100-8932, Japan
	Concurrer (name, e-mail, organization and address):	U.S. BGN ACUF; underseafeatures@nga.mil; U.S. Board on Geographic Names Mail Stop: N62 7501 Heller Road Springfield VA 22150-3647 USA

Remarks:	The position of the summit is located in (24°15.78'N, 159°15.00'E).
-----------------	---

NOTE: This form should be forwarded, when completed:

- a) **If the undersea feature is located inside the external limit of the territorial sea:**
- to your "National Authority for Approval of Undersea Feature Names" (see Publication B-6) or, if this does not exist or is not known, either to the IHO or to the IOC (see addresses below);
- b) **If at least 50 % of the undersea feature is located outside the external limits of the territorial sea:**
- to the IHO or to the IOC, at the following addresses :

International Hydrographic Organization (IHO) 4b, Quai Antoine 1er B.P. 445 MC 98011 MONACO CEDEX Principality of MONACO Fax: +377 93 10 81 40 E-mail: info@iho.int Web: www.iho.int	Intergovernmental Oceanographic Commission (IOC) UNESCO Place de Fontenoy 75700 PARIS France Fax: +33 1 45 68 58 12 E-mail: info@unesco.org Web: http://ioc-unesco.org/
--	--

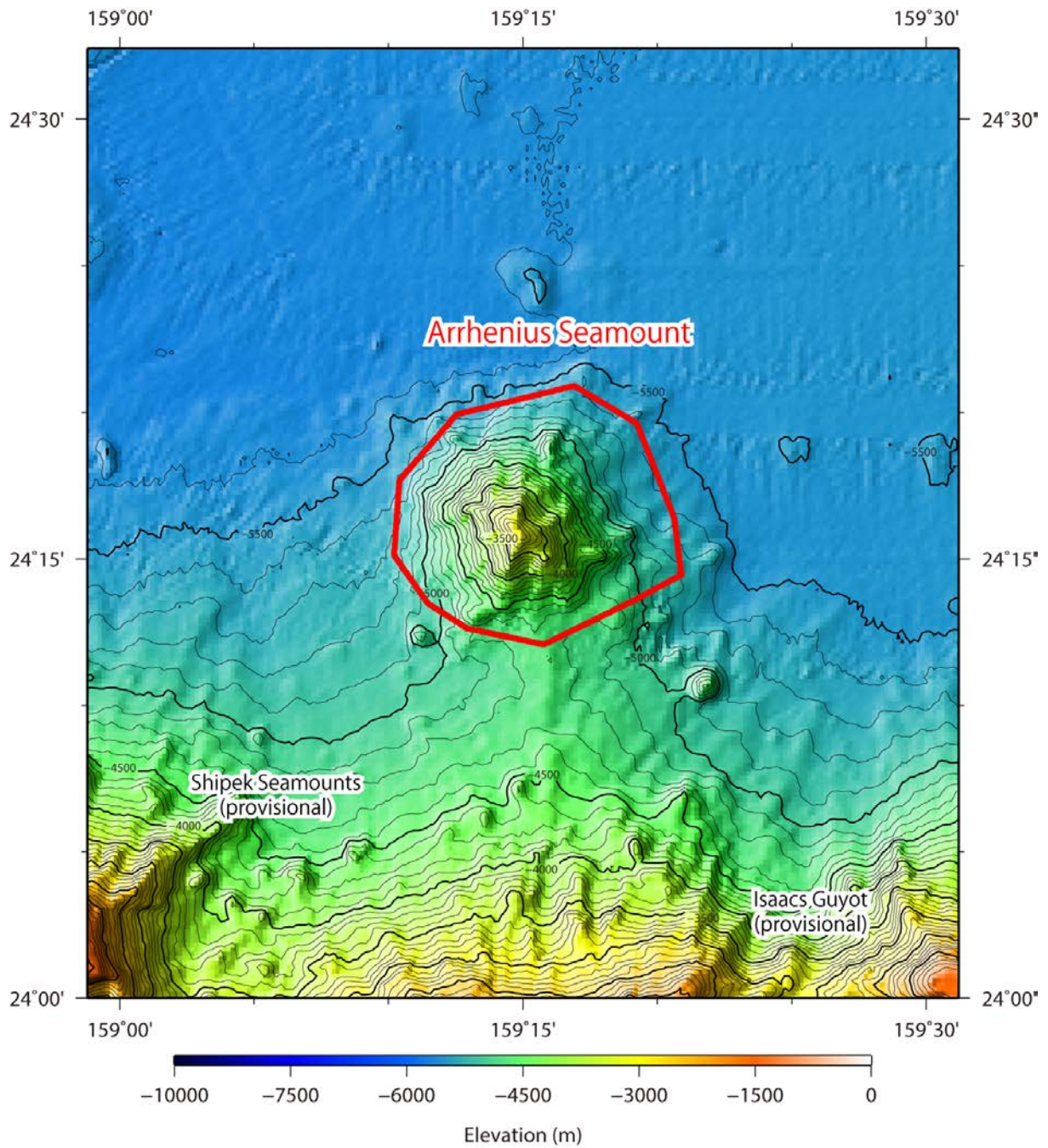


Fig. 1. Bathymetric map of the Arrhenius Seamount. Contours are in 100 m.

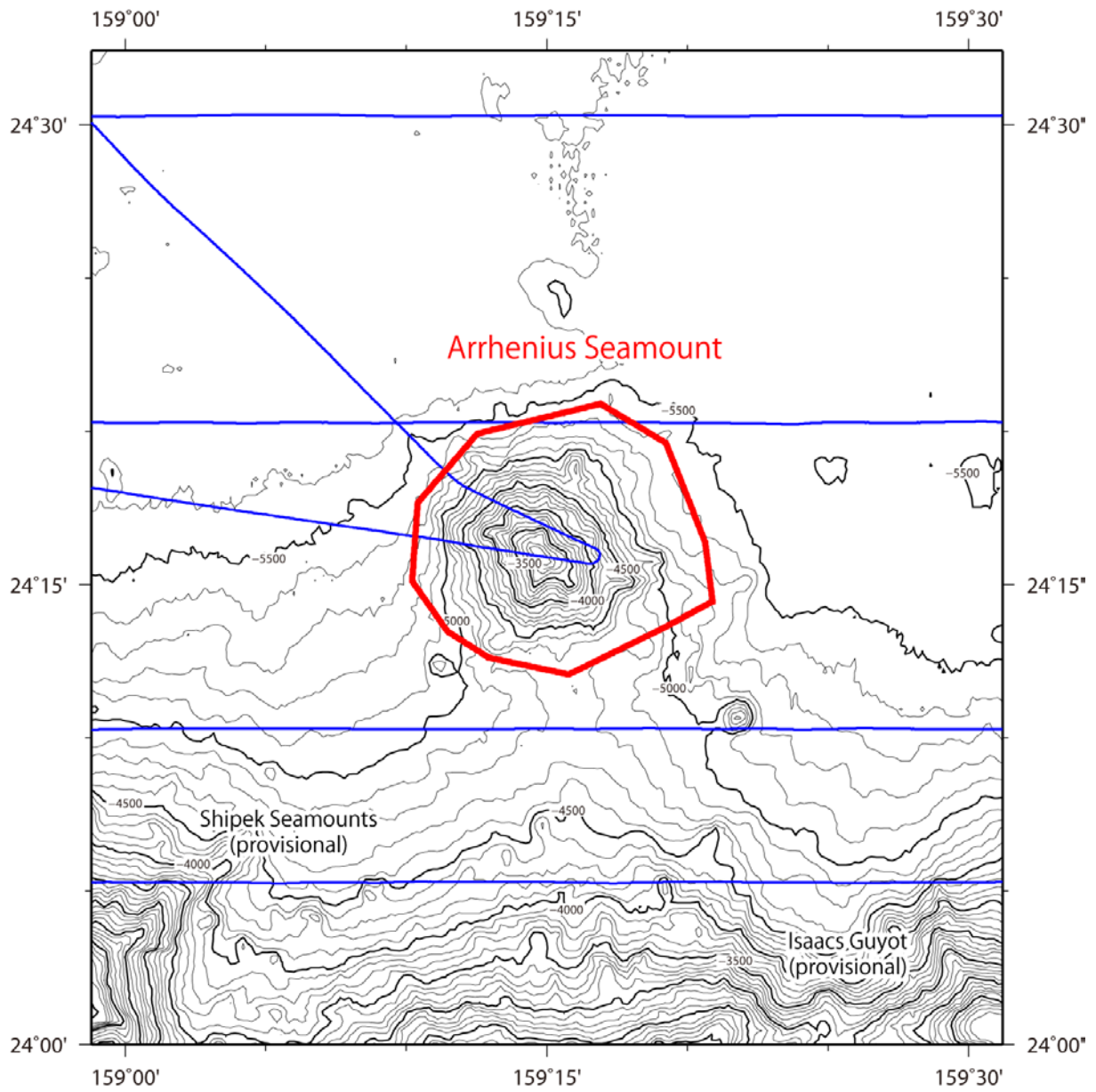


Fig. 2. Bathymetric map of the Arrhenius Seamount, shown with track lines. Contours are in 100 m.

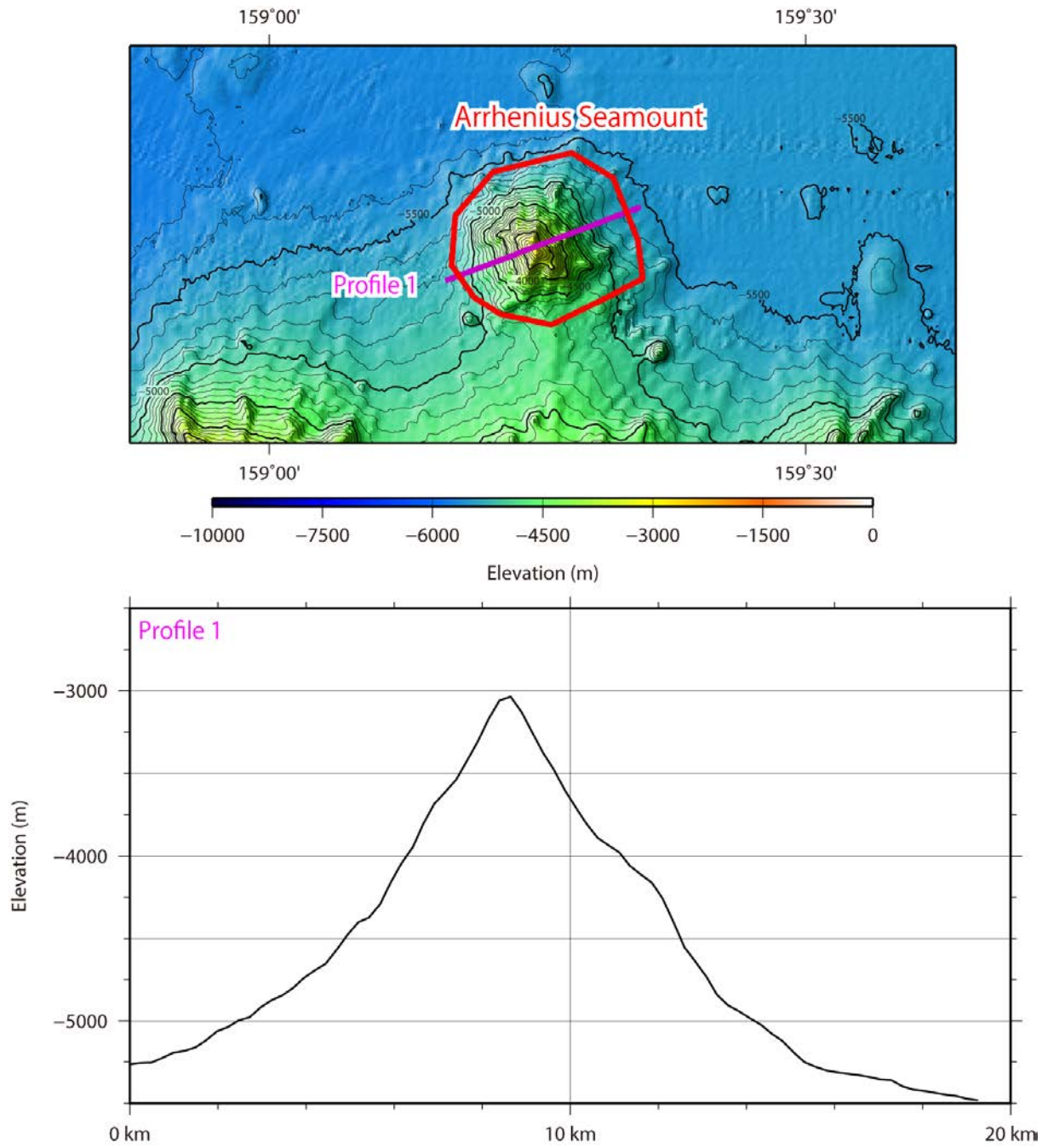


Fig. 3. Bathymetric profile across the Arrhenius Seamount.

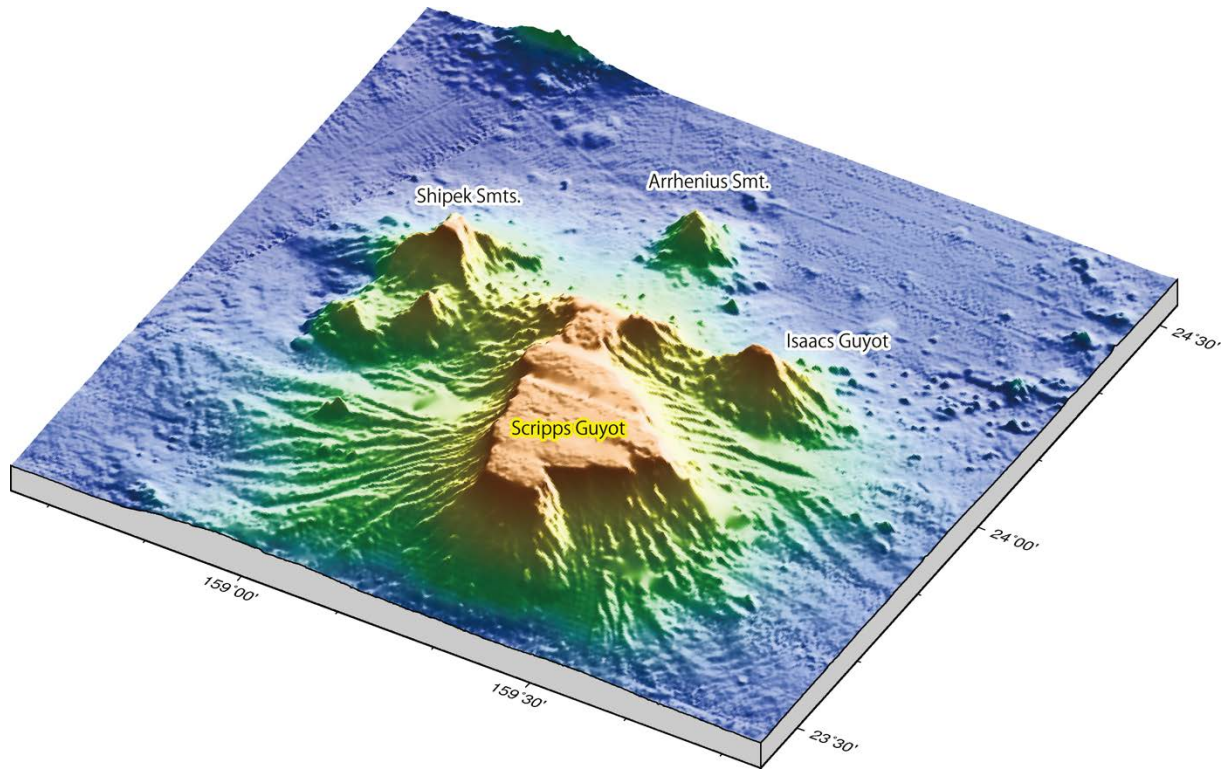


Fig. 4. 3D image of the Arrhenius Seamount and its vicinity. Names in yellow are already in GEBCO Gazetteer.