



**Republic of Palau**  
**TERRITORY AND BOUNDARY**  
**Task Force**

Authorized by Executive Order No. 340 dated June, 17 2013

Dear Sir,

The Republic of Palau kindly submits several proposals for the naming of undersea features to be considered at SCUFN 32. Your consideration and support of our proposals is highly appreciated.

The Republic of Palau comprises of about 350 islands and islets. Most of these surmount the Palau-Kyushu Ridge (also known as the Kyushu-Palau Ridge). The largest island is Babeldaob, and the northernmost one is Kayangel (**Fig. 1**). The proposed undersea feature names relate to the features in the Palau-Kyushu Ridge.

**Figure 1** displays the general location (Yellow Box) of the proposed features in relation to Palau’s location. In total, the Republic of Palau is submitting 11 proposals. The proposals include 1 BASIN, 3 RIDGES, 2 KNOLLS, and 5 HILLS (**Fig. 2**). All undersea feature names are relevant to Palau’s indigenous vegetation, fish and birds, following the primary naming rule written in “Standardization of Undersea Feature Names”, Publication B-6.

The Japanese government generously provided parts of the bathymetric data (**Fig. 3**). **Table 1** lists the sources and other relevant information of the multi-beam bathymetric datasets used for Palau’s undersea feature name proposals.

**Table 1. Source and relevant information of primary multi-beam bathymetric data used for Palau’s undersea feature name proposals**

Cruise ID	Embark	Arrival	Days	Ship	Navigation Method	Navigation Accuracy	Geodetic Datum	Multibeam System	Data Source	Map Key
FY2006_CSS13	12/4/2006	12/20/2006	17	S/V Shoyo	GPS w ithout SA	26 m	WGS84	Seabeam 2112	HODJ	Red
FY2007_CSS3	5/17/2007	6/7/2007	22	S/V Takuyo	GPS w ithout SA	26 m	WGS84	Seabeam 2112	HODJ	Black
FY2007_CSS4	6/6/2007	6/25/2007	20	S/V Shoyo	GPS w ithout SA	26 m	WGS84	Seabeam 2112	HODJ	Yellow
FY2008_CSS2	4/16/2008	5/8/2008	23	S/V Shoyo	GPS w ithout SA	26 m	WGS84	Seabeam 2112	HODJ	Green
MR00-K07_leg4	12/14/2000	200/12/19	6	R/V Mirai	GPS w ithout SA	26 m	WGS84	Seabeam 2112	JAMSTEC	Red (dotted)
MR01-K05_leg4	12/13/2001	12/20/2001	7	R/V Mirai	GPS w ithout SA	26 m	WGS84	Seabeam 2112	JAMSTEC	Green (dotted)
MR05-03_leg3	8/25/2005	9/5/2005	12	R/V Mirai	GPS w ithout SA	26 m	WGS84	Seabeam 2112	JAMSTEC	Pnk (dotted)
MR08-02	5/26/2008	6/30/2008	36	R/V Mirai	GPS w ithout SA	26 m	WGS84	Seabeam 2112	JAMSTEC	Black (dotted)
MR98-K02	12/22/1998	1/31/1999	41	R/V Mirai	GPS	100 m	WGS84	Seabeam 2112	JAMSTEC	Blue (dotted)
Y93-03	10/16/1993	11/18/1993	34	R/V Yokosuka	GPS	100 m	WGS84	HS-10	JAMSTEC	Red (thick)
Y95-06_Leg2	9/18/1995	10/3/1995	16	R/V Yokosuka	GPS	100 m	WGS84	HS-10	JAMSTEC	Blue (thick)
Y96-12	10/26/1996	11/13/1996	19	R/V Yokosuka	GPS	100 m	WGS84	HS-10	JAMSTEC	Green (thick)

HODJ=Hydrographic and Oceanographic Department of Japan  
 JAMSTEC = Japan Agency for Marine-Earth Science and Technology

The 2 KNOLLS and 5 HILLS are named indigenous vegetation (plants and trees) found in Palau (**Table 2**). The 1 BASIN is named after a Palauan indigenous fish, and 3 RIDGES after Palau’s indigenous birds. (**Table 2**).

**Task Force Officers**

**Chairman**  
 Rebluud Kesolei

**Members**  
 Ramon Rechebei  
 David K Idip Jr.  
 Takamatsu Emesiochel  
 Nick Ngwal  
 John Gaylord

**Advisor**  
 Jerrold E. Knight



# Republic of Palau TERRITORY AND BOUNDARY Task Force

Authorized by Executive Order No. 340 dated June, 17 2013

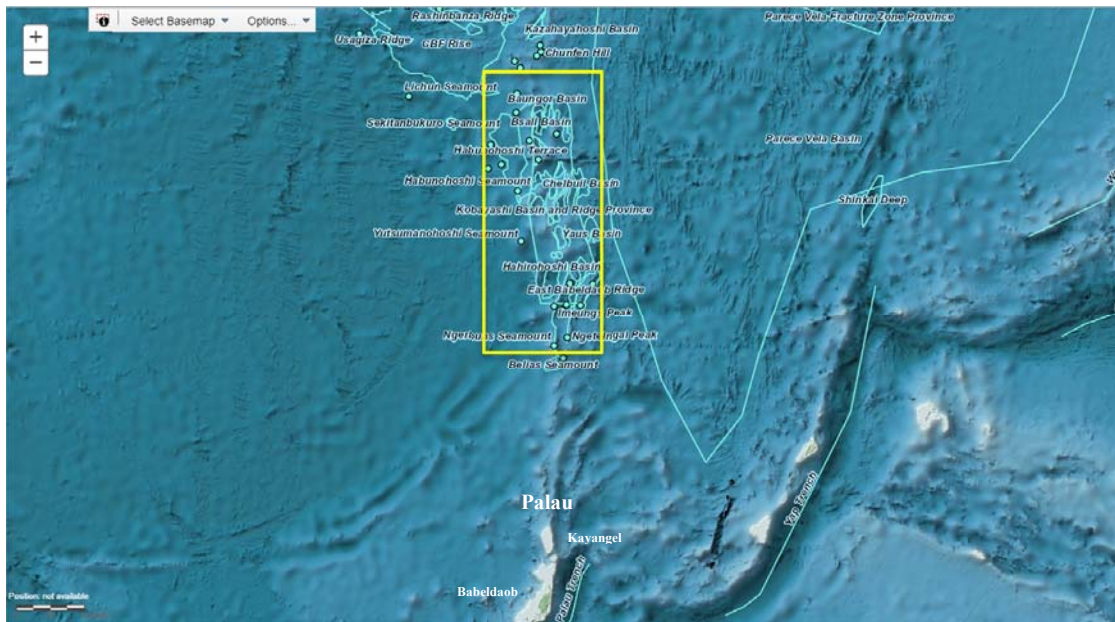
## Task Force Officers

**Chairman**  
Rebluud Kesolei

**Members**  
Ramon Rechebei  
David K Idip Jr.  
Takamatsu Emesiochel  
Nick Ngwal  
John Gaylord

**Advisor**  
Jerrold E. Knight

**Fig. 1. Index map showing the location of the Republic of Palau. The yellow box indicates the approximate location of Figs. 2 and 3.**



# Republic of Palau TERRITORY AND BOUNDARY Task Force

Authorized by Executive Order No. 340 dated June, 17 2013

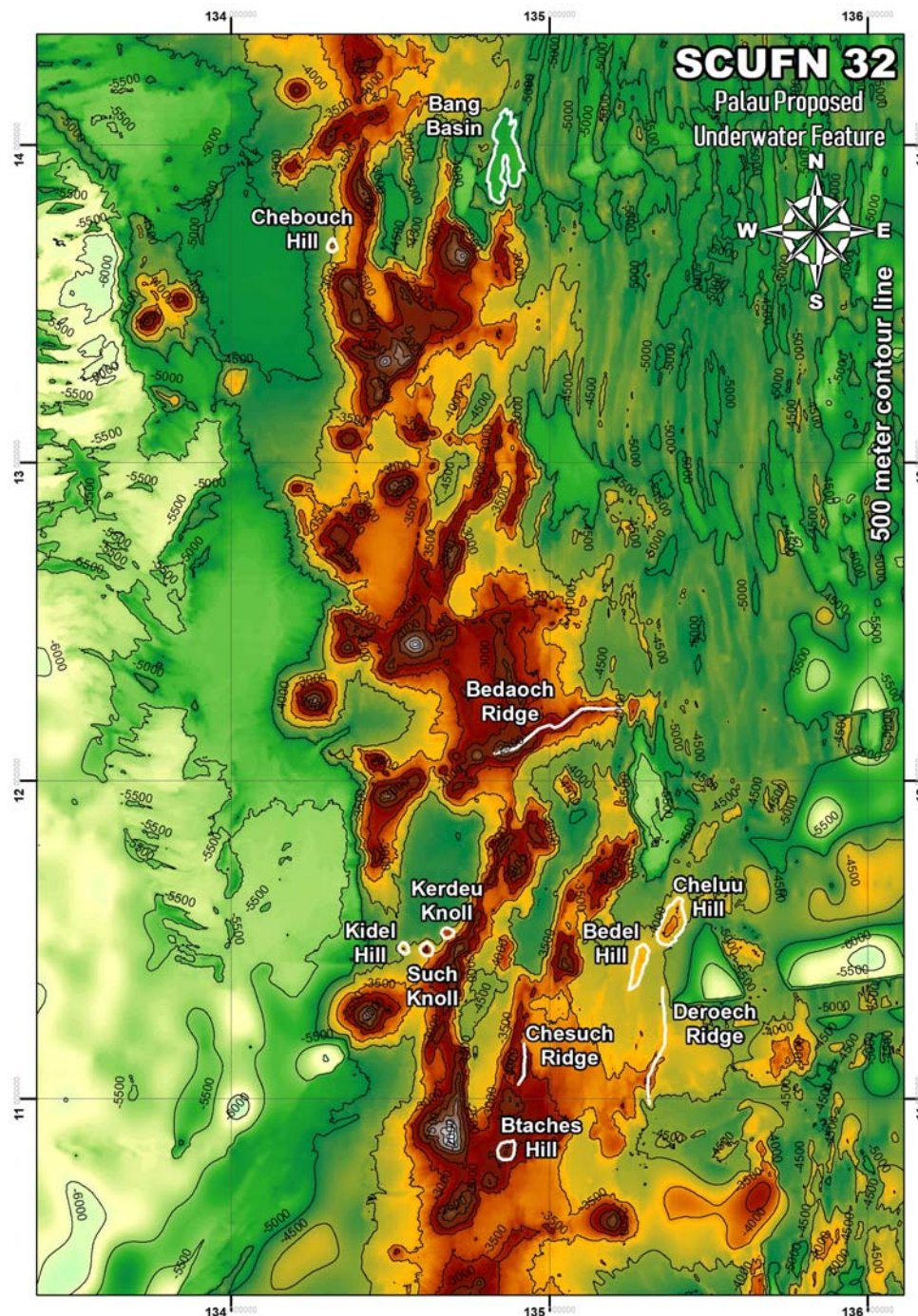


Fig. 2. Bathymetric map showing the proposed undersea feature names (see Table 2) by the Republic of Palau. Contours intervals are 500 m (see Fig. 3 for clearer contour image).

## Task Force Officers

**Chairman**  
Rebluud Kesolei

**Members**  
Ramon Rechebei  
David K Idip Jr.  
Takamatsu Emesiochel  
Nick Ngwal  
John Gaylord

**Advisor**  
Jerrold E. Knight



**Republic of Palau**  
**TERRITORY AND BOUNDARY**  
**Task Force**

Authorized by Executive Order No. 340 dated June, 17 2013

**Table 2. List of proposed undersea feature names as indicated in Figure 2**

<b>ID</b>	<b>Specific Name</b>	<b>Generic Name</b>	<b>Naming Convention</b>
SCUFN-32_1-B01	Bang	BASIN	Palau Indigenous Fish
SCUFN-32_2-K01	Such	KNOLL	Palau Indigenous Plant
SCUFN-32_3-K02	Kerdeu	KNOLL	Palau Indigenous Plant
SCUFN-32_4-R01	Deroech	RIDGE	Palau Indigenous Bird
SCUFN-32_5-R02	Bedaoch	RIDGE	Palau Indigenous Bird
SCUFN-32_6-R03	Chesuch	RIDGE	Palau Indigenous Bird
SCUFN-32_7-H01	Bedel	HILL	Palau Indigenous Plant
SCUFN-32_8-H02	Cheluu	HILL	Palau Indigenous Plant
SCUFN-32_9-H03	Chebouch	HILL	Palau Indigenous Plant
SCUFN-32_10-H04	Btaches	HILL	Palau Indigenous Plant
SCUFN-32_11-H05	Kidel	HILL	Palau Indigenous Plant

**Task Force Officers**

**Chairman**

Rebluud Kesolei

**Members**

Ramon Rechebei

David K Idip Jr.

Takamatsu Emesiochel

Nick Ngwal

John Gaylord

**Advisor**

Jerrold E. Knight



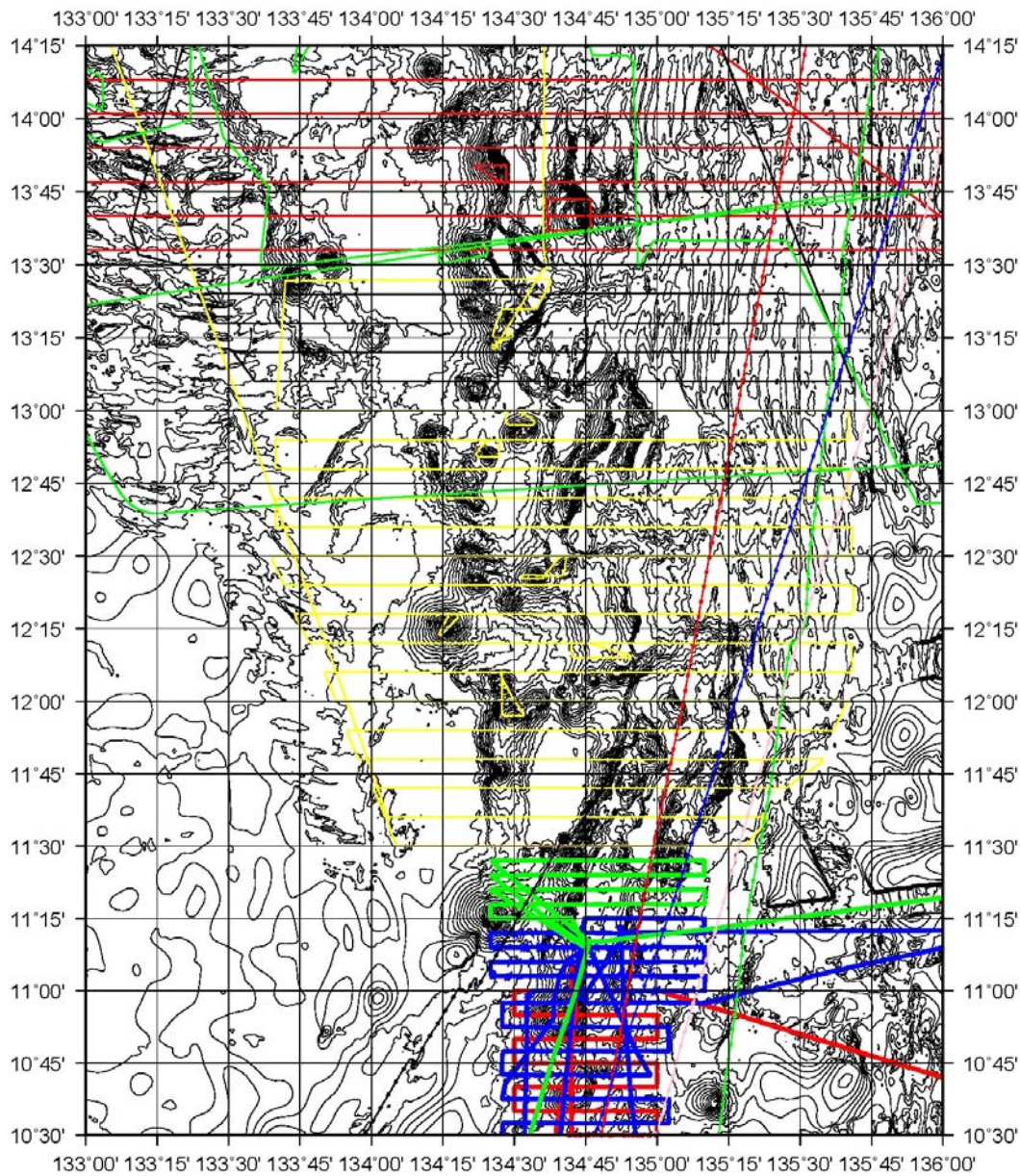
**Republic of Palau**  
**TERRITORY AND BOUNDARY**  
**Task Force**  
Authorized by Executive Order No. 340 dated June, 17 2013

**Task Force Officers**

**Chairman**  
Rebluud Kesolei

**Members**  
Ramon Rechebei  
David K I dip Jr.  
Takamatsu Emesiochel  
Nick Ngwal  
John Gaylord

**Advisor**  
Jerrold E. Knight



**Fig. 3. Bathymetric map showing the cruise track lines used to reconstruct bathymetry data. Contour intervals are 100 m. See Map Key in Table 1.**