

INTERNATIONAL HYDROGRAPHIC ORGANIZATION	INTERGOVERNMENTAL OCEANOGRAPHIC COMMISSION (of UNESCO)
--------------------------------------------	-----------------------------------------------------------

### UNDERSEA FEATURE NAME PROPOSAL

(See NOTE overleaf)

Note: The boxes will expand as you fill the form.

<b>Name Proposed:</b>	Bang Basin	<b>Ocean or Sea:</b>	Philippine Sea
-----------------------	------------	----------------------	----------------

<b>Geometry that best defines the feature (Yes/No) :</b>						
Point	Line	Polygon	Multiple points	Multiple lines*	Multiple polygons*	Combination of geometries*
		Yes				

\* Geometry should be clearly distinguished when providing the coordinates below.

	Lat. (degrees, north)	Long. (degrees, east)
	14° 06' 42.759" N	134° 51' 43.638" E
	14° 06' 43.638" N	134° 52' 00.776" E
	14° 06' 03.208" N	134° 52' 00.117" E
	14° 05' 50.903" N	134° 52' 03.633" E
	14° 06' 08.921" N	134° 52' 26.704" E
	14° 06' 13.315" N	134° 52' 48.457" E
	14° 04' 45.425" N	134° 52' 47.578" E
	14° 03' 57.964" N	134° 52' 33.296" E
	14° 03' 58.623" N	134° 52' 48.457" E
	14° 04' 14.443" N	134° 52' 58.345" E
	14° 04' 31.143" N	134° 53' 17.241" E
	14° 04' 36.855" N	134° 53' 37.236" E
	14° 03' 59.502" N	134° 53' 40.972" E
	14° 03' 04.790" N	134° 53' 25.151" E
	14° 02' 35.786" N	134° 53' 09.331" E
	14° 01' 53.379" N	134° 53' 09.331" E
	14° 01' 41.953" N	134° 52' 57.686" E
	13° 59' 35.171" N	134° 54' 01.846" E
	13° 59' 14.956" N	134° 54' 09.756" E
	13° 58' 25.298" N	134° 54' 18.984" E
	13° 57' 10.371" N	134° 54' 38.540" E
	13° 56' 23.569" N	134° 55' 07.983" E
	13° 55' 48.413" N	134° 55' 05.127" E
	13° 55' 20.947" N	134° 55' 22.485" E
	13° 55' 07.983" N	134° 54' 39.199" E
	13° 55' 05.786" N	134° 54' 26.895" E
	13° 54' 42.056" N	134° 54' 23.379" E
	13° 53' 34.380" N	134° 54' 19.863" E
	13° 52' 41.865" N	134° 54' 13.271" E
	13° 52' 20.332" N	134° 53' 55.254" E
	13° 52' 11.543" N	134° 53' 11.309" E
	13° 52' 23.188" N	134° 52' 44.063" E
	13° 53' 10.649" N	134° 52' 23.188" E
	13° 54' 24.038" N	134° 52' 10.225" E
	13° 54' 40.737" N	134° 52' 18.135" E
	13° 54' 52.163" N	134° 52' 20.332" E
	13° 55' 18.750" N	134° 52' 19.453" E
	13° 56' 10.605" N	134° 52' 06.709" E
	13° 57' 16.963" N	134° 52' 10.225" E
	13° 57' 54.976" N	134° 52' 00.117" E
	13° 58' 05.083" N	134° 51' 47.813" E

	13° 57' 59.370" N	134° 51' 26.279" E
	13° 57' 09.712" N	134° 51' 16.831" E
	13° 56' 40.269" N	134° 51' 13.315" E
	13° 55' 49.731" N	134° 51' 17.710" E
	13° 55' 05.127" N	134° 51' 18.369" E
	13° 54' 03.164" N	134° 50' 53.101" E
	13° 53' 36.577" N	134° 50' 50.903" E
	13° 52' 59.224" N	134° 51' 34.849" E
	13° 52' 44.063" N	134° 51' 42.759" E
	13° 50' 58.813" N	134° 51' 20.566" E
	13° 50' 58.813" N	134° 51' 03.208" E
	13° 50' 48.047" N	134° 50' 54.639" E
	13° 50' 21.460" N	134° 51' 00.352" E
	13° 50' 04.102" N	134° 51' 21.885" E
	13° 49' 48.281" N	134° 51' 23.423" E
	13° 49' 19.497" N	134° 51' 01.011" E
	13° 49' 08.071" N	134° 50' 38.818" E
	13° 49' 14.443" N	134° 50' 12.231" E
	13° 50' 02.783" N	134° 49' 03.018" E
	13° 51' 55.063" N	134° 48' 45.000" E
	13° 52' 50.435" N	134° 48' 47.197" E
	13° 53' 15.703" N	134° 48' 19.731" E
	13° 53' 49.541" N	134° 48' 24.126" E
	13° 55' 52.588" N	134° 48' 47.197" E
	13° 56' 50.376" N	134° 49' 08.071" E
	13° 58' 06.621" N	134° 49' 38.174" E
	13° 59' 14.297" N	134° 49' 43.228" E
	14° 00' 30.542" N	134° 50' 17.065" E
	14° 01' 24.595" N	134° 49' 29.604" E
	14° 02' 48.091" N	134° 49' 33.340" E
	14° 03' 24.785" N	134° 49' 48.281" E
	14° 05' 17.065" N	134° 50' 54.639" E
	14° 05' 40.137" N	134° 50' 48.926" E
	14° 06' 42.759" N	134° 51' 43.638" E

<b>Feature Description:</b>	Maximum Depth :	5312 m	Steepness :	N/A
	Minimum Depth :	5008 m	Shape :	Elongated Shape
	Total Relief :	304 m	Dimension/Size :	33 km x 8 km

<b>Associated Features:</b>	This feature is within the Kobayashi Basin and Ridge Province.
-----------------------------	----------------------------------------------------------------

<b>Chart/Map References:</b>	Shown Named on Map/Chart:	None
	Shown Unnamed on Map/Chart:	Japanese bathymetric chart #6728
	Within Area of Map/Chart:	None

<b>Reason for Choice of Name (if a person, state how associated with the feature to be named):</b>	Bang is the Palauan name for the Bright Saddled Goatfish which is found on reefs throughout Palau.
----------------------------------------------------------------------------------------------------	----------------------------------------------------------------------------------------------------

<b>Discovery Facts:</b>	Discovery Date:	Dec. 2006
	Discoverer (Individual, Ship):	S/V Shoyo (HODJ)

<b>Supporting Survey Data, including Track Controls:</b>	Date of Survey:	Dec. 2006, Jun 2007
	Survey Ship:	S/V Shoyo (HODJ)

	Sounding Equipment:	Multibeam echo sounder Seabeam 2112
	Type of Navigation:	GPS without Selective Availability
	Estimated Horizontal Accuracy (nm):	0.014 nm (26 m)
	Survey Track Spacing:	6 nm
	Supporting material can be submitted as Annex in analog or digital form.	

Proposer(s):	Name(s):	David K. Idip, Jr. and Takamatsu Emesiochel
	Date:	June 05, 2019
	E-mail:	davididip@gmail.com
	Organization and Address:	Territory and Boundary Task Force, Office of the President, Republic of Palau
	Concurrer (name, e-mail, organization and address):	

Remarks:	We used GMT and GeoMapApp software to visualize the bathymetric data. QGIS and ArcMap were the preferred GIS software.
----------	---------------------------------------------------------------------------------------------------------------------------

NOTE : This form should be forwarded, when completed :

- a) **If the undersea feature is located inside the external limit of the territorial sea :-**  
to your "National Authority for Approval of Undersea Feature Names" (see page 2-9) or, if this does not exist or is not known, either to the IHB or to the IOC (see addresses below);
- b) **If at least 50 % of the undersea feature is located outside the external limits of the territorial sea :-**  
to the IHB or to the IOC, at the following addresses :

International Hydrographic Bureau (IHB) 4, Quai Antoine 1er B.P. 445 MC 98011 MONACO CEDEX <u>Principality of MONACO</u> Fax: +377 93 10 81 40 E-mail: <a href="mailto:info@ihb.mc">info@ihb.mc</a>	Intergovernmental Oceanographic Commission (IOC) UNESCO Place de Fontenoy 75700 PARIS France Fax: +33 1 45 68 58 12 E-mail: <a href="mailto:info@unesco.org">info@unesco.org</a>
-----------------------------------------------------------------------------------------------------------------------------------------------------------------------------------------------------------------------	----------------------------------------------------------------------------------------------------------------------------------------------------------------------------------------------------

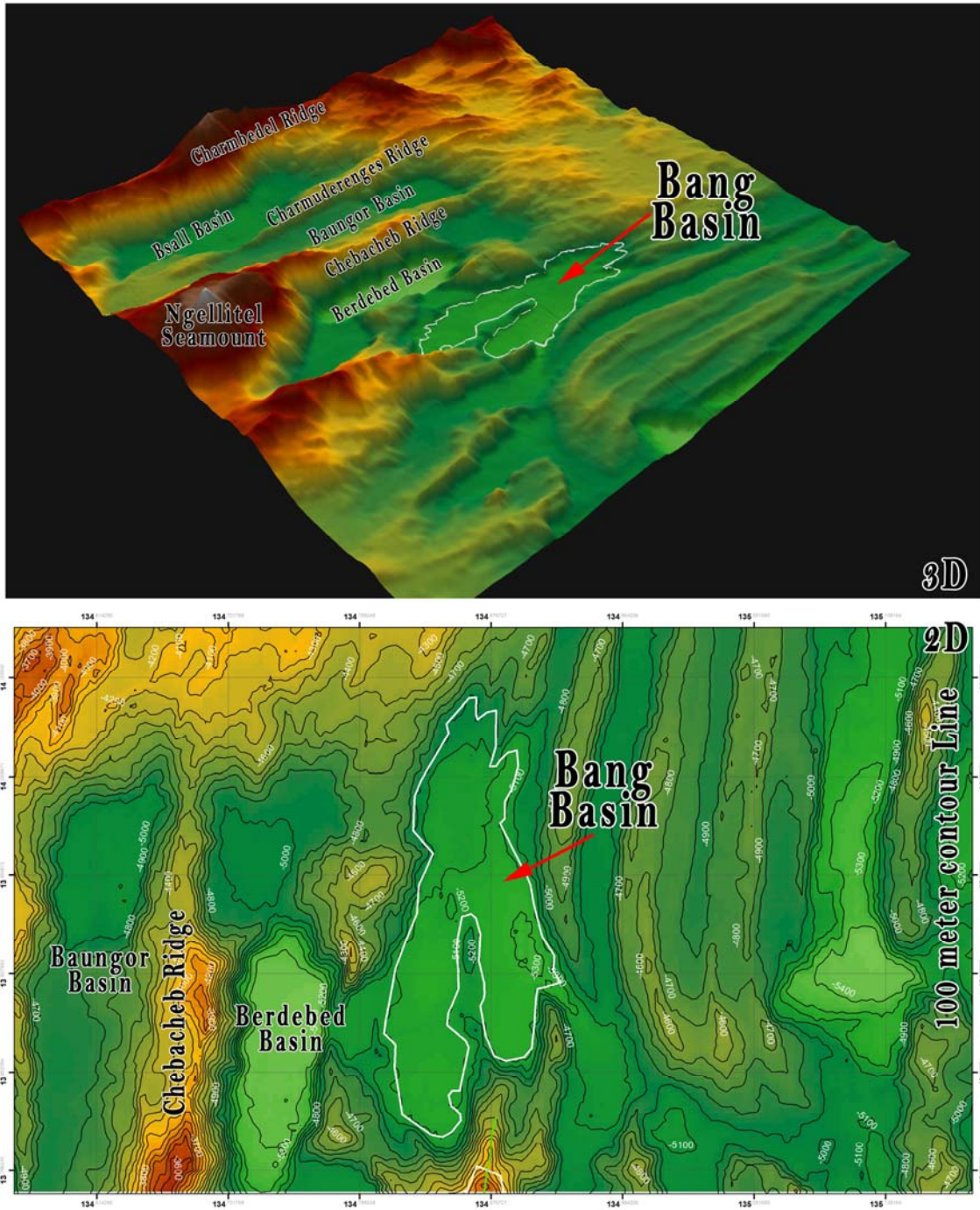


Fig. 1. Bathymetric 3D image of Bang Basin and its vicinity.



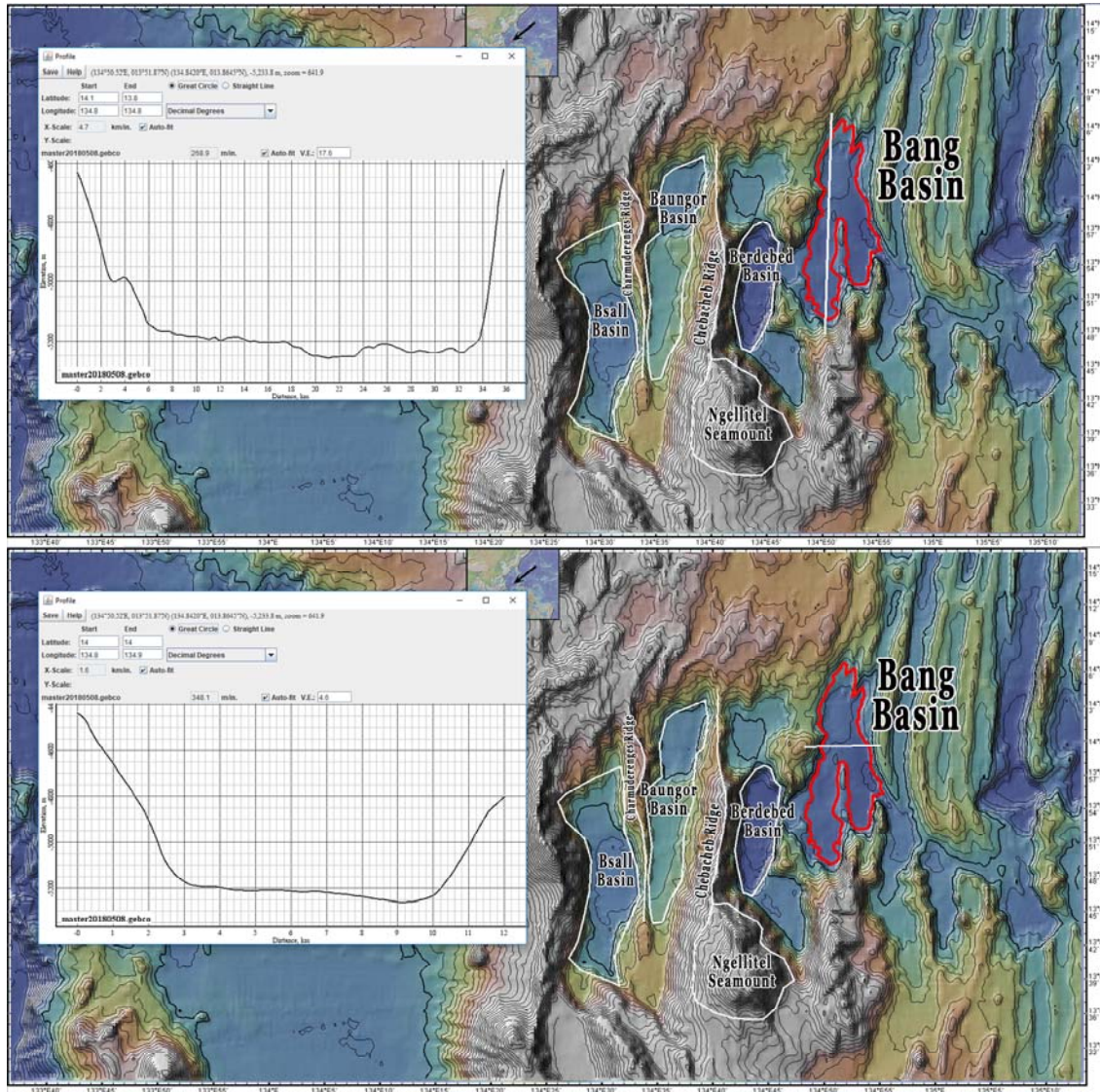


Fig. 2. Bathymetric profile across Bang Basin. The polygon that defines the basin is also shown. Contours in 100 m intervals.



Fig. 3. Picture of Bright Saddled Goatfish (Bang)