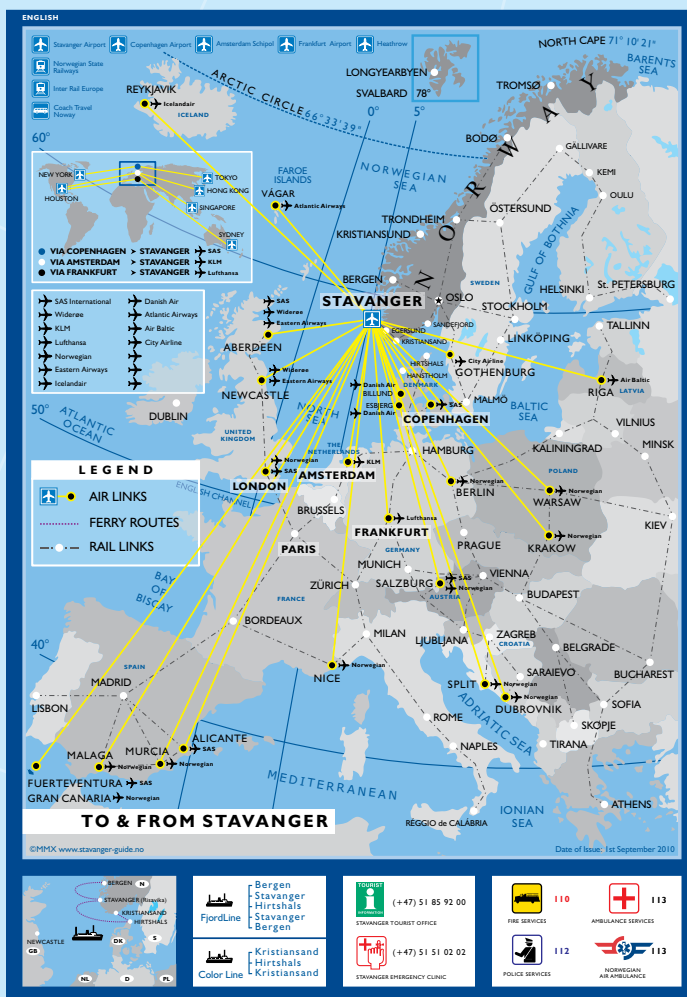


13th SNPWG meeting



Norwegian Mapping Authority – Hydrographic Service (NHS)
13th SNPWG meeting from 4 to 8 April 2011
Stavanger, Norway

NORWEGIAN MAPPING AUTHORITY
HYDROGRAPHIC SERVICE



The Norwegian Mapping Authority, Hydrographic Service (NHS) is pleased to welcome you to Stavanger for the 13th SNPWG meeting. NHS is also pleased to provide the following logistical information for the meeting. Should you require any additional information or assistance please contact NHS mail to: olav.haugen@statkart.no

Where is Stavanger?

Stavanger is located on the south-west coast of Norway. Today it's known to be the "oil capital" of Norway, where most of the oil companies have their offices.

Stavanger is the fourth largest city in Norway with about 120 000 inhabitants.

Since Stavanger is an international city a wide variety of restaurant can be found here.

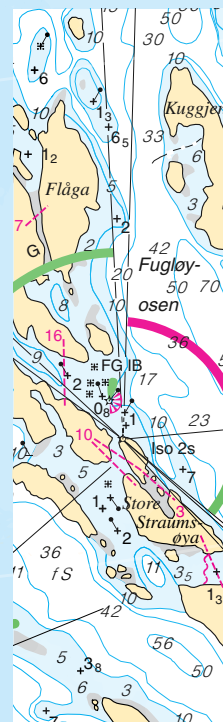


How to get to Stavanger:

The airport (Stavanger Airport, Sola) is 14 km from the town centre. The airport express bus runs every 20 min or you can take a taxi. The bus stops at most of the major hotels.

Bus: 90 NOK (every 20 min), traveling time (20-30 min).

Taxi: 300-400/400-600 NOK day/night, traveling time (15 min).



13th SNPWG meeting



NORWEGIAN MAPPING AUTHORITY
HYDROGRAPHIC SERVICE

Accommodation:

I have made a block booking at Victoria Hotel <http://www.victoria-hotel.no>. Please refer to the NHS agreement when making reservation. The price is NOK 1390 per night for a standard room, breakfast and internet included (Sat to Sun NOK 850). The price is higher than in most other countries, but it is standard price in Stavanger in the middle of a week. Cheaper hotels can be found outside town centre.



The block reservation is valid until the 26th of March, and the hotel prefers to get a list of the SNPWG participants. Please send an e-mail to olav.haugen@statkart.no with your conformation, including arrival and departure dates as soon as possible.

Meeting information

The meetings will be held at the Victoria Hotel on Mon-Tue and Thu-Fri. On Wednesday you are all invited to go on a sailing trip with M/S “Gann”. The ship, a former Norwegian coast liner “Hurtigruten”, is now a school training ship.

M/S “Gann” will leave from Stavanger at 9 o’clock, and will sail to Lysefjorden and around the islands near Stavanger. The trip on M/S “Gann” ends at the island Kvitsøy at 2:30. Lunch will be served onboard.

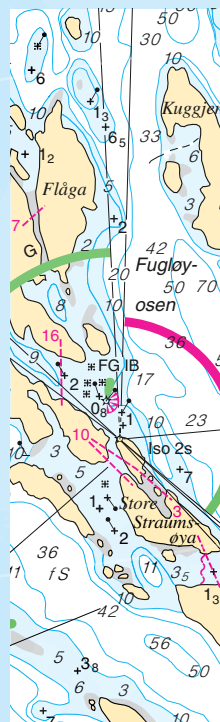
From the quay at Kvitsøy there will be a 10 minutes’ walk to the Kvitsøy VTS for a guided tour. We will return to Stavanger on a local ferry at around 5:30.

Electricity

The electricity in Norway is 230 V, 50 Hz, using the Europlug (type C & F) which has two round prongs.

Climate

In the beginning of April is early Spring in Stavanger and the average temperature is about 8°C. Be prepared for wind and rain, but hopefully the weather will be nice. See <http://www.yr.no/place/Norway/Rogaland/Stavanger/Stavanger/> for weather forecasts and weather statistics.



13th SNPWG meeting



NORWEGIAN MAPPING AUTHORITY
HYDROGRAPHIC SERVICE

Pulpit Rock

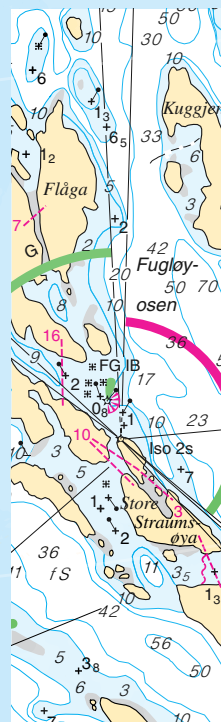
The Tour and Activity Committee at the NHC will arrange a trip to the Pulpit Rock on Sunday the 3rd of April. All members of the SNPWG are invited to join. For those who are interested there will be a pick up at the Victoria Hotel at 10 AM on Sunday. Pulpit rock is one of the most visited attractions in Norway. We go by ferry from Stavanger to Tau (50 min), then bus (20 min) to where the trail starts. This 1.5-2 hours walk on a marked trail takes us to the top of the Pulpit rock. Remember to bring good footwear and appropriate clothing.

The whole trip will take 6 to 7 hours.

Please give me an e-mail as soon as possible if you are interested in participate on the Pulpit rock trip.

Tourist information

More information about Stavanger and the Stavanger region can be found at <http://www.regionstavanger.com/en/>



SURROUNDING AREAS - STAVANGER



0 0.5 1 1.5 2
0 0.5 1 2
km Miles

7th Edition - SVG 02 District Map
Date of Issue: 27th September 2008



ACCOMMODATION

- 1 First Hotel Alstor
- 2 Hummeren Hotel
- 3 Rica Forum Hotel
- 4 Sola Strand Hotel
- 5 Stavanger Mosvangen Camping
- 6 St. Svithun Hotell
- 7 Viste Strandhotel



MMVIII © Kevin Paul Scarrott.
www.stavanger-guide.no

CAR PARK	SCENIC VIEW	MOTORWAY	TOURIST OFFICE (OPEN ALL YEAR)	BOTANICAL GARDENS	ROGALAND MUSEUM OF FINE ARTS	THREE SWORDS MONUMENT
SIGHTS OF INTEREST	STAVANGER AIRPORT (SOLA)	EUROPEAN ROAD	SIDDIS SENTERET CONFERENCE & EXHIBITION CENTRE	HISTORICAL AIRCRAFT MUSEUM	'ALEXANDER L. KIELLAND' MEMORIAL	COAST CULTURAL CENTRE
TOURIST INFORMATION	TOLL ROAD	PRIMARY ROUTES WITH SCENIC VIEW	DEEP SEA FISHING EXCURSIONS	TUNGENES LIGHTHOUSE MUSEUM	IRON AGE FARM	
BATHING	HOSPITAL	PRIMARY ROUTES		TUNGENES LIGHTHOUSE MUSEUM		
CAMPING SITE	CASUALTY CLINIC	OTHER ROADS		TUNGENES LIGHTHOUSE MUSEUM		
GOLF	BEACH	ROAD TUNNEL		TUNGENES LIGHTHOUSE MUSEUM		
MOBILE HOME SERVICE CENTRE	AREA OF NATURAL BEAUTY	SUB-SEA TUNNEL		TUNGENES LIGHTHOUSE MUSEUM		
ACCOMMODATION	CONSULATE	NORTH SEA CYCLEWAY		TUNGENES LIGHTHOUSE MUSEUM		
		RAILWAY		TUNGENES LIGHTHOUSE MUSEUM		
		COMMUNITY BOUNDARY		TUNGENES LIGHTHOUSE MUSEUM		



Victoria Hotel

- ### ACCOMMODATION
- 7 Best Western Havly Hotell
 - 8 Clarion Hotel Stavanger
 - 9 Comfort Hotel Grand
 - 10 Comfort Hotel Square - 07/2010
 - 11 Myhregaarden Hotel
 - 12 Park Inn Stavanger
 - 13 Radisson Blu Atlantic Hotel
 - 14 Radisson Blu Royal Hotel
 - 15 Rica Park Hotel
 - 16 Rogalandshimeim.
 - 17 Skagen Brygge Hotel
 - 18 Skansen Hotel
 - 19 Stavanger Bed & Breakfast
 - 20 Stavanger lille Hotel
 - 21 Thon Hotel Maritim
 - 22 Victoria Hotel Rica Partner
 - 23 First Hotel Alstor
 - 24 Rica Forum Hotel
 - 25 St. Svithun Hotell
 - 26 Stavanger Camping Mosvangen
 - 27 Stavanger Vandrerhjem Mosvangen

MMX© Kevin Paul Scarrott www.stavanger-guide.no Sola Sandnes Kristiansand 600m 1200m 1800m Hillveg Mariero Sandnes

CAR PARK	CAMPING SITE	STAVANGER CITY COUNCIL	MOTORWAY	TOURIST OFFICE (OPEN ALL YEAR)	WHARF WAREHOUSES	CULTURAL CENTRE, LIBRARY, CHILDREN'S MUSEUM & CINEMA	NORWEGIAN TELECOM MUSEUM	MAIN BUS & COACH TERMINAL	NORWEGIAN PETROLEUM MUSEUM
CYCLE PARKING	INTERNET & E-MAIL	CHEMIST/ DRUGSTORE	PRIMARY ROUTES	STAVANGER MARITIM MUSEUM	STAVANGER CATHEDRAL	ROGALAND MUSEUM OF FINE ARTS	MUSEUM OF ARCHAEOLOGY IN STAVANGER	LEDAAL	NORWEGIAN CANNING MUSEUM
CYCLE RENTAL	GUEST HARBOUR FACILITIES	CHURCH	OTHER ROADS	THE PRINTING MUSEUM	VALBERG TOWER & GUARDS MUSEUM	STAVANGER OLD TOWN	STAVANGER CONCERT HALL	POLICE HEADQUARTERS	FIRE STATION & FIRE MUSEUM
SIGHTS OF INTEREST	SCENIC VIEW	CONSULATE	ROAD TUNNEL	THE BLUE PROMENADE	STAVANGER MUSEUM	STAVANGER ART ASSOCIATION	ROGALAND ART CENTRE		
BAGGAGE LOCKERS	STAVANGER AIRPORT (SOLA 12KM)	POST OFFICE	PEDESTRIAN STREETS	RAILWAY	SHOPPING AREAS				
ACCOMMODATION	RAILWAY STATION	LIQUOR STORE	PATH, STEP & CYCLE ACCESS	AREA OF NATURAL BEAUTY	BUILT-UP AREA				
SWIMMING POOL	EXPRESS BOATS	THE NORWEGIAN EMIGRATION CENTRE	HARBOUR AREA	CATHEDRAL SQUARE	MARKET PLACE				
BATHING AREA	FERRIES, DOMESTIC	CATHEDRAL SQUARE		CUSTOM HOUSE	VÅLAND TOWER	ROGALAND THEATRE			
FISH MARKET	FOOT & CYCLE ACCESS								
PETROL STATION	STAVANGER COUNTY COUNCIL								