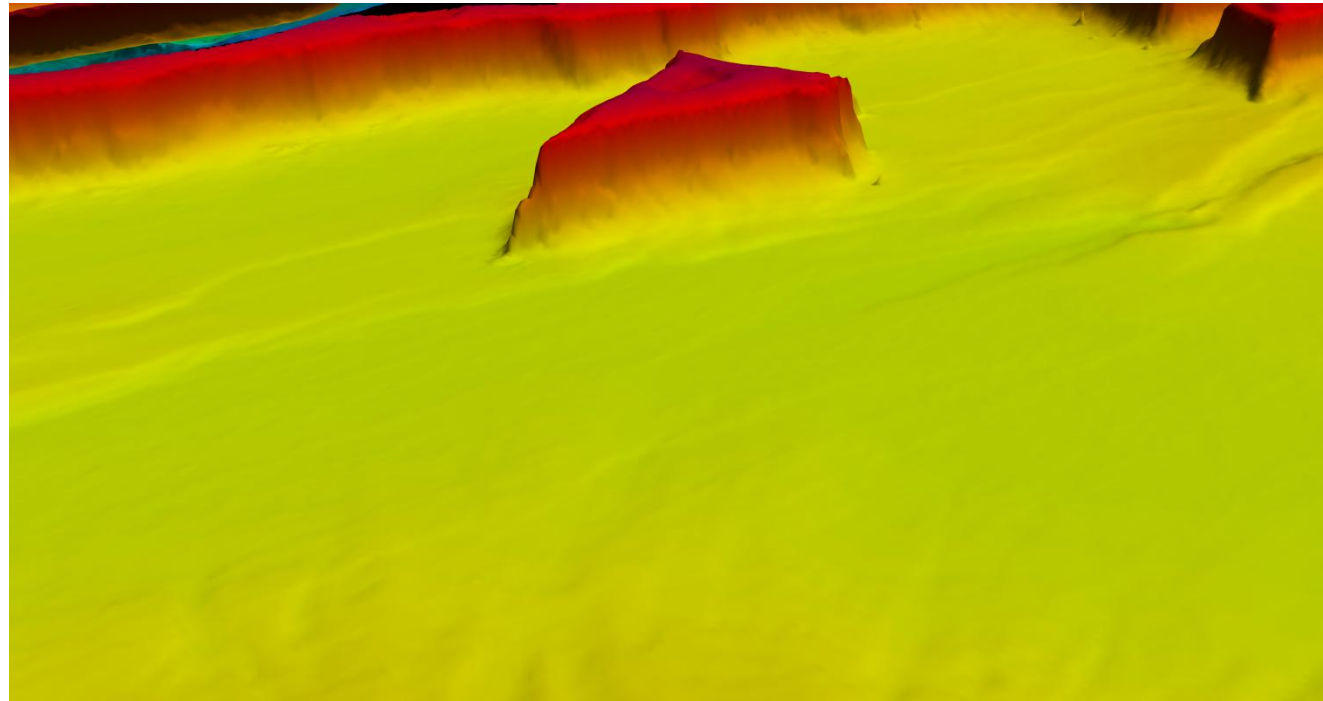




SEAMOUNT

19NM NW of Abū
Hijārah.

Height - 150m Approx.



Block_C4
20-54-49.84N 039-15-04.64E
Length – 1.75km
Shoalest Point – 37.61m
Surrounding Depths – 37.62m to 56.80m
Slope – 92.67m to 196.07m
General Depths – 300m

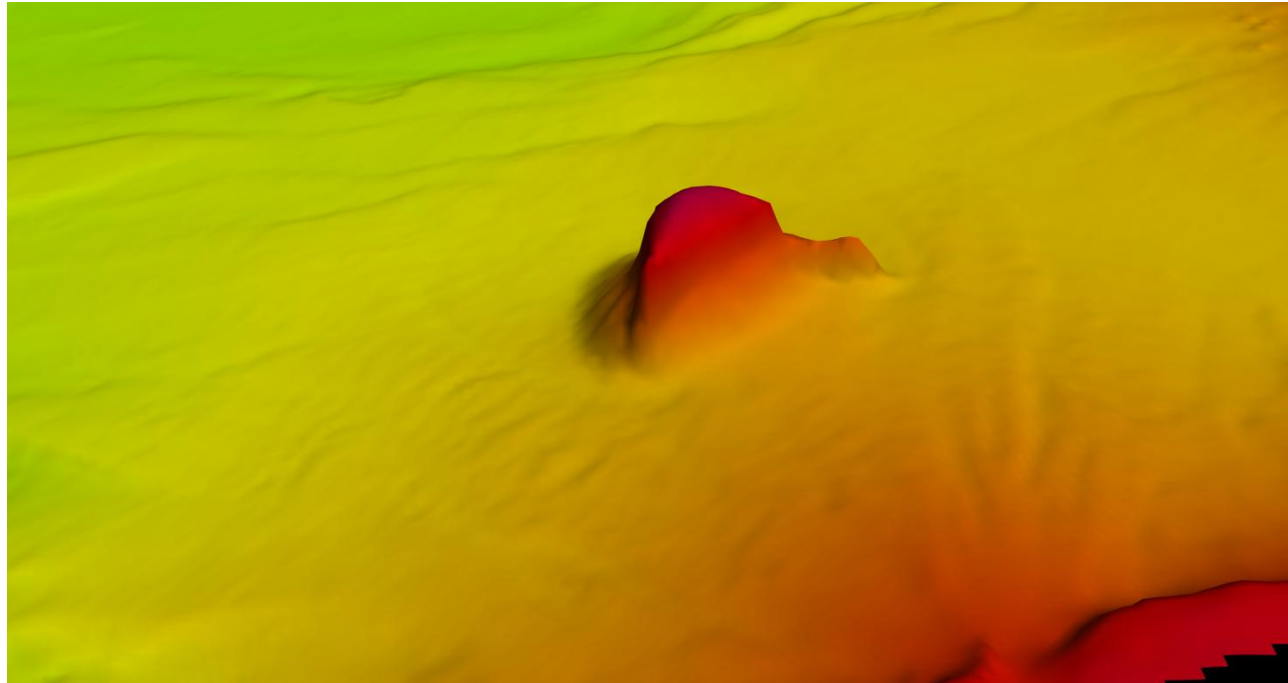




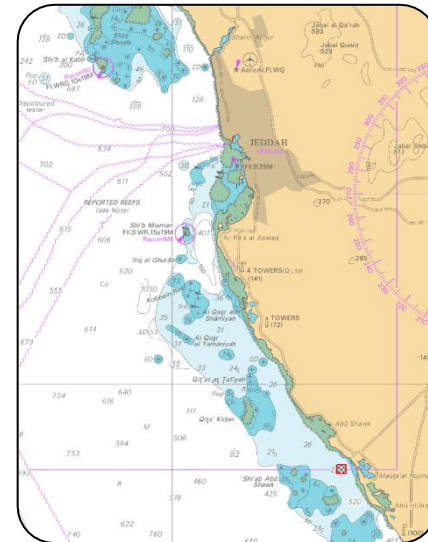
SEAMOUNT

9NM W of Abū Hijārah.

Height - 225m Approx.



Block_C6
20-48-59.99N 039-23-17.60E
Length – 850m
Shoalest Point – 36.29m
Surrounding Depths – 35m to 85m
Slope – 36m to 320m
General Depths – 300m

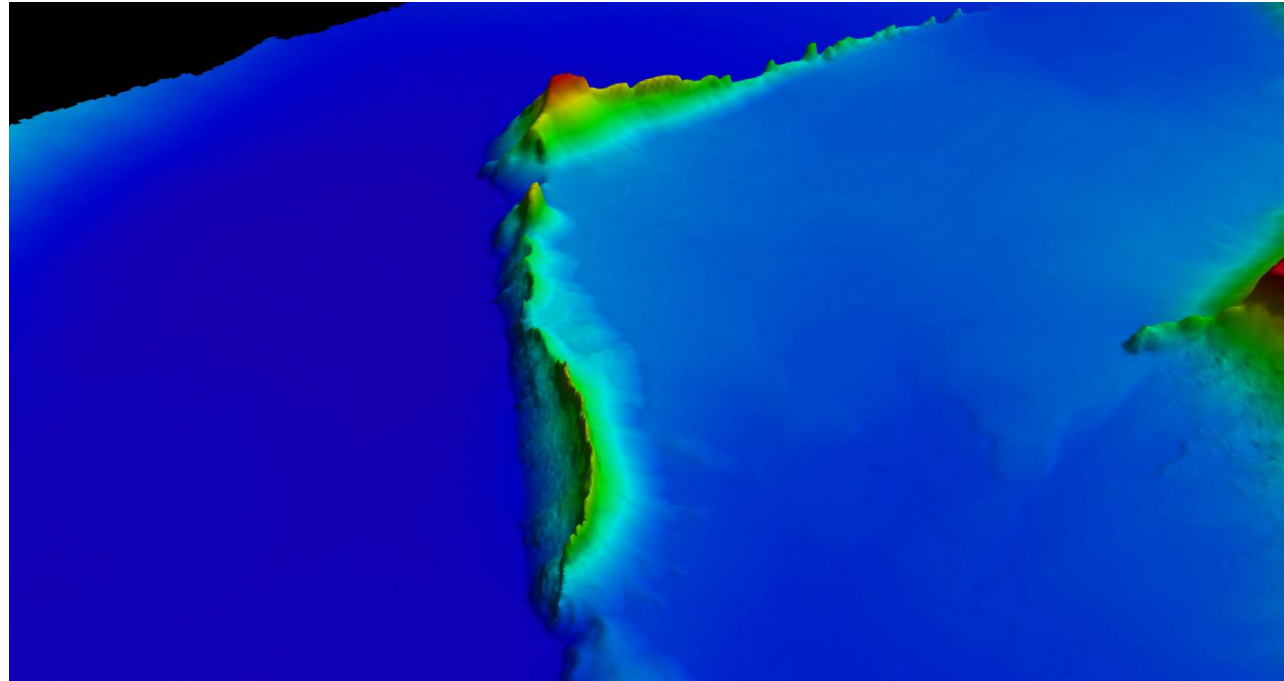




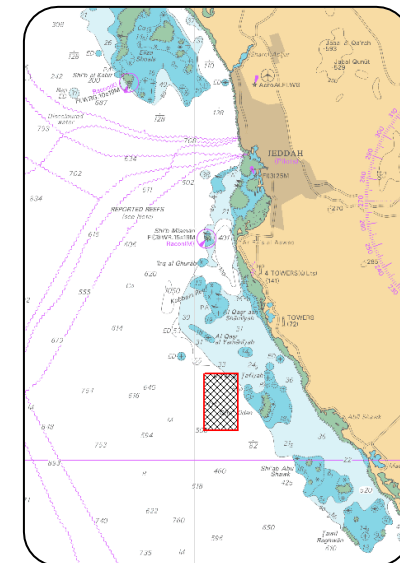
RIDGE

28NM SW of Jeddah.

Height - 730m Approx.



Block_C1
20-56-23.13N 039-02-36.46E
Length – 19.0km
Shoalest Point – 82.72m
Surrounding Depths – 81m to 109m
Slope – 100m to 600m
General Depths – 930m



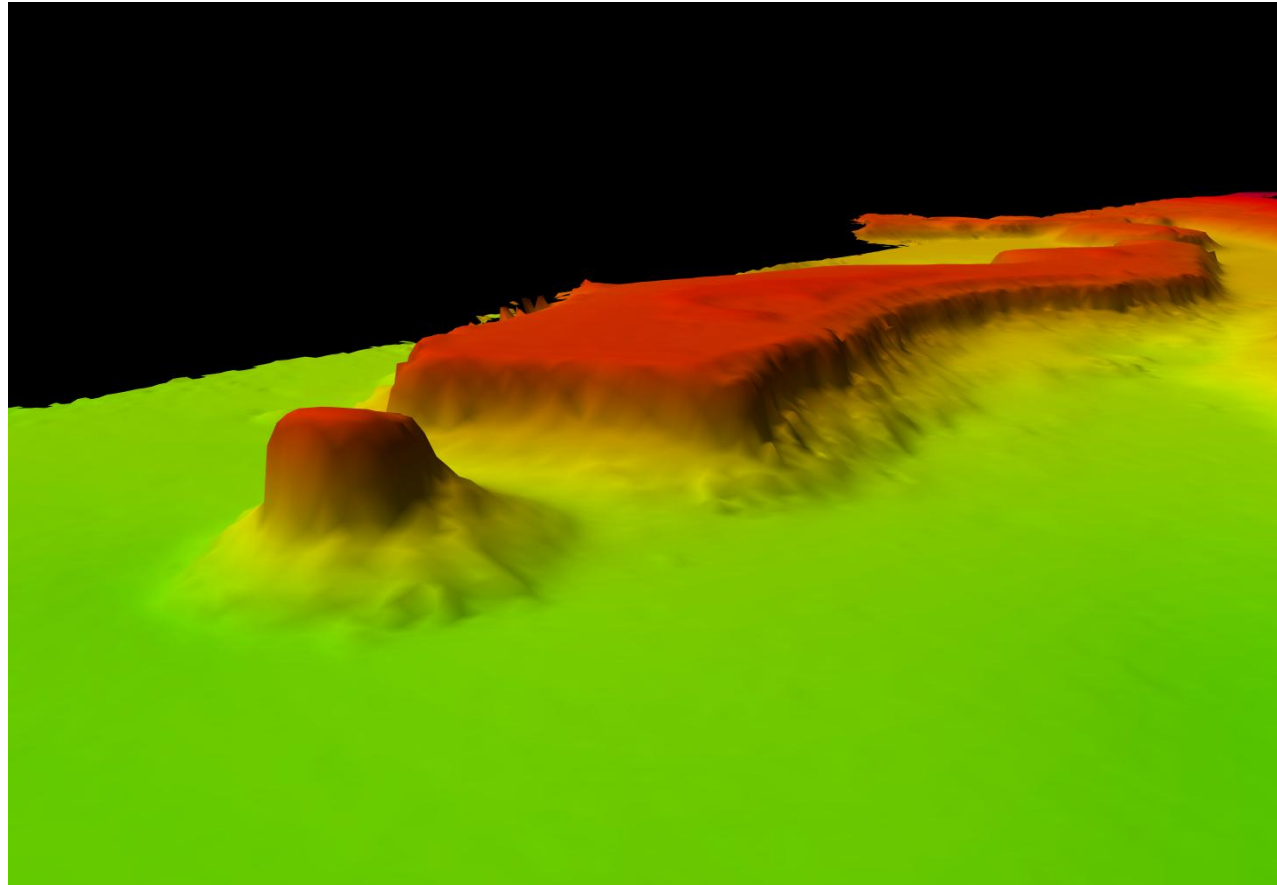


SEAMOUNT

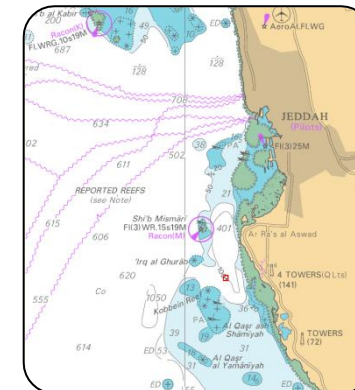
5NM SW of Ar

Ra's al Aswad.

Height - 110m Approx.



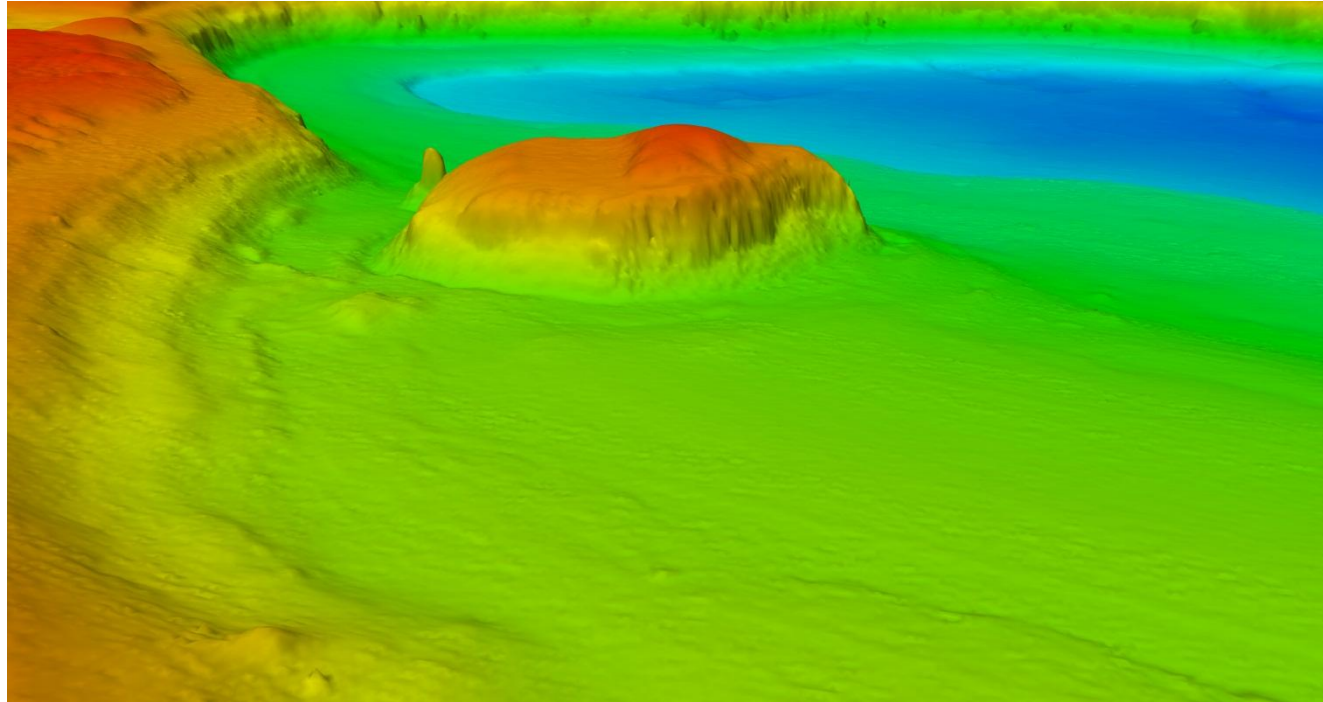
Block_B4
20-56-23.13N 039-02-36.46E
Length – 110km
Shoalest Point – 88.85m
Surrounding Depths – 87m to 110m
Slope – 88m to 100m
General Depths – 230m



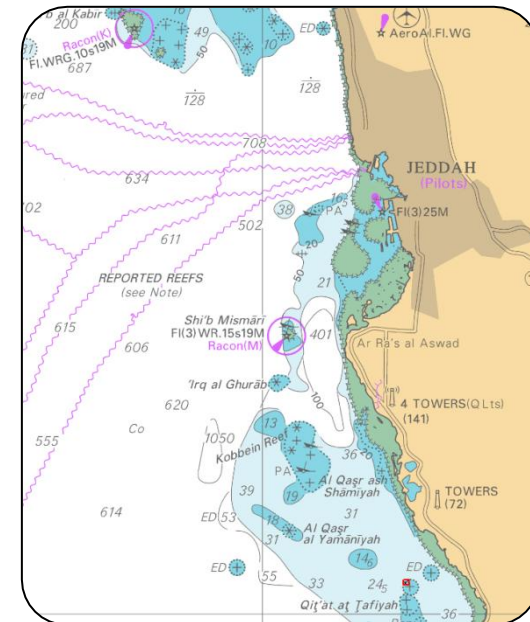


UNDERWATER ROCK

4NM SW of Hayyirah.
Height - 89m Approx.



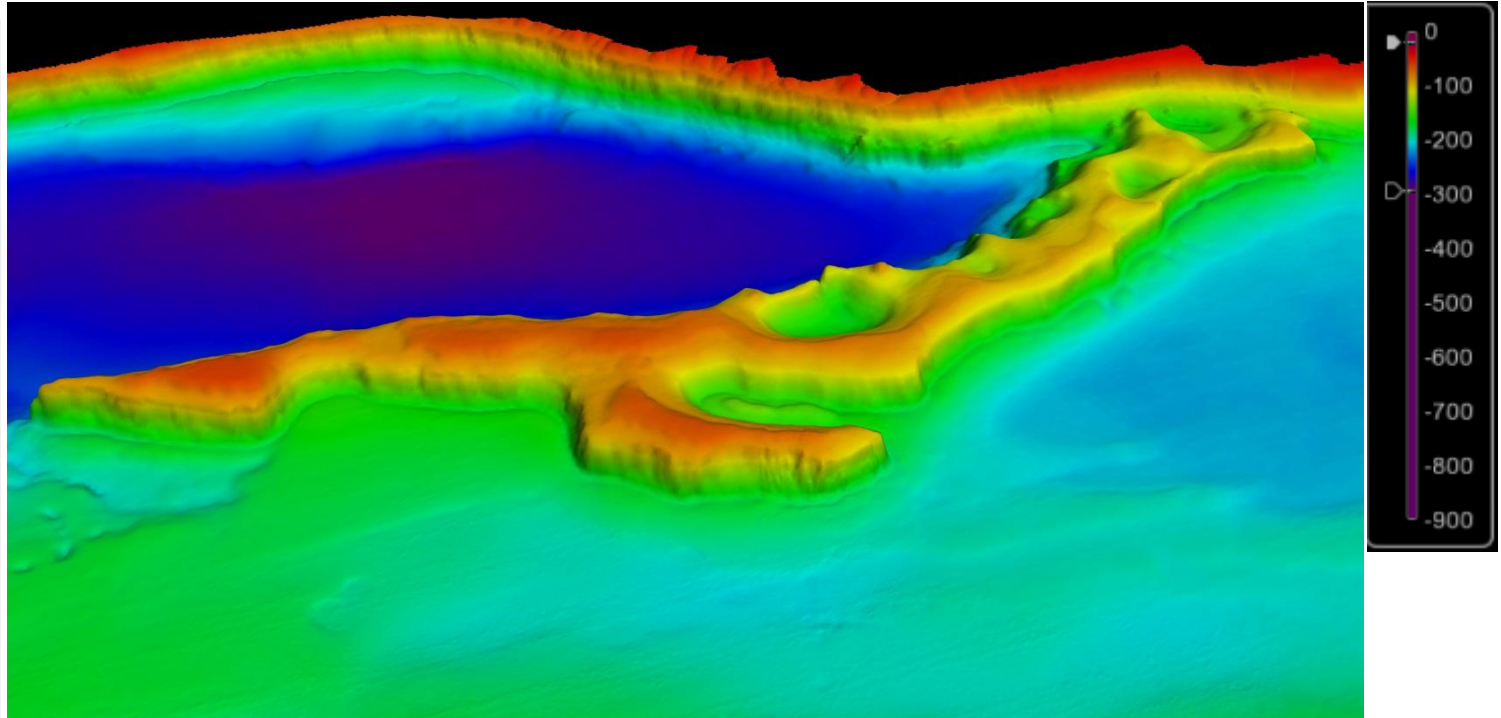
Block_B10
21-02-11.40N 039-10-45.91E
Length – 475m
Shoalest Point – 61.21m
Surrounding Depths – 62.34m to 80.99m
Slope – 92.12m to 136.28m
General Depths – 134m



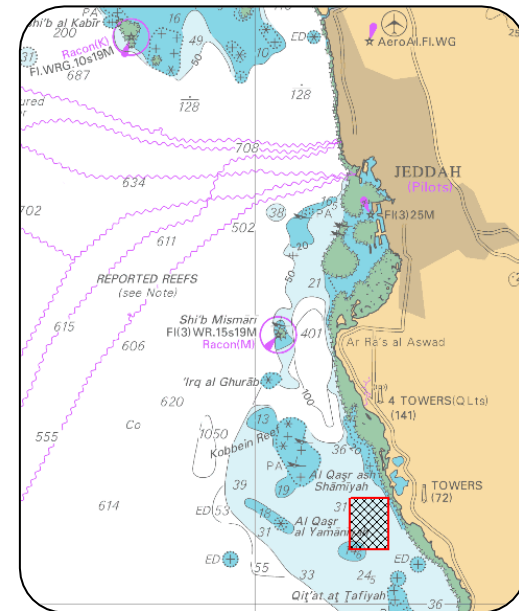


RIDGE

3.5NM W of Hayyirah.
Height - 60m Approx.



Block_B10
21-06-03.55N 039-08-44.21E
Length – 6.5km
Shoalest Point – 60.98m
Surrounding Depths – 61.50m to 87.81m
Slope – 61.35m to 185.06m
General Depths – 200m

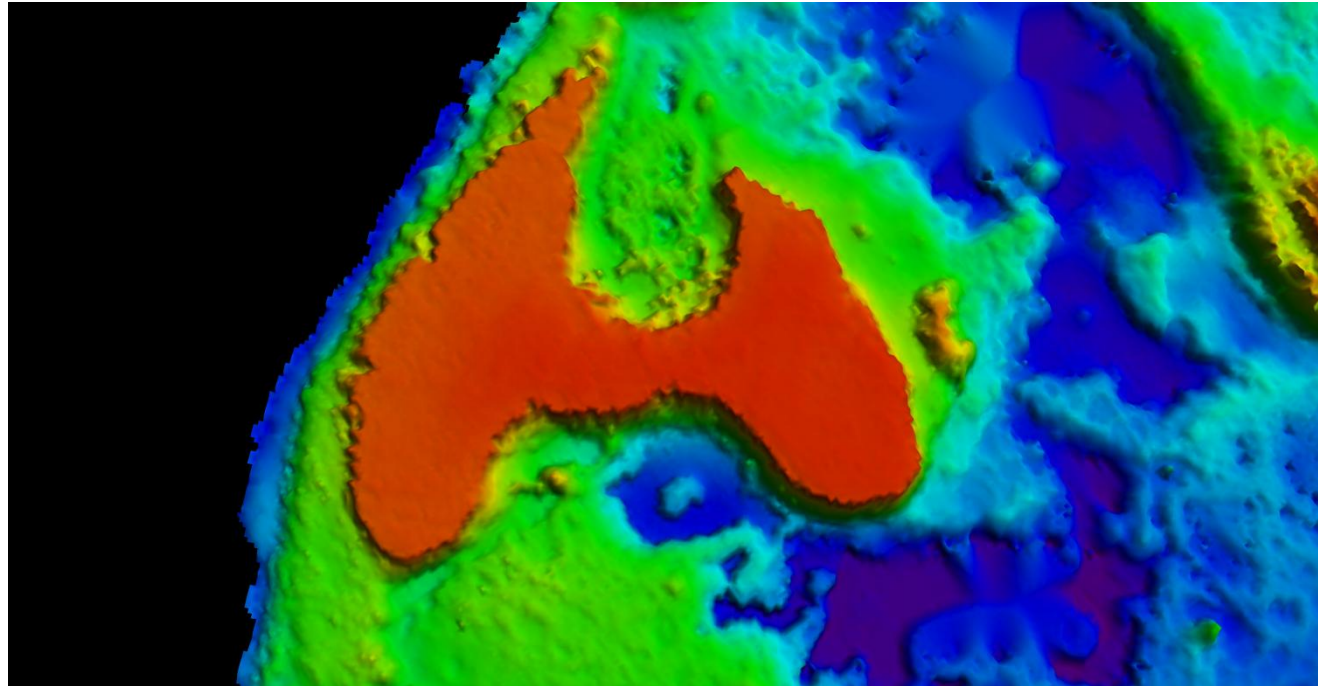




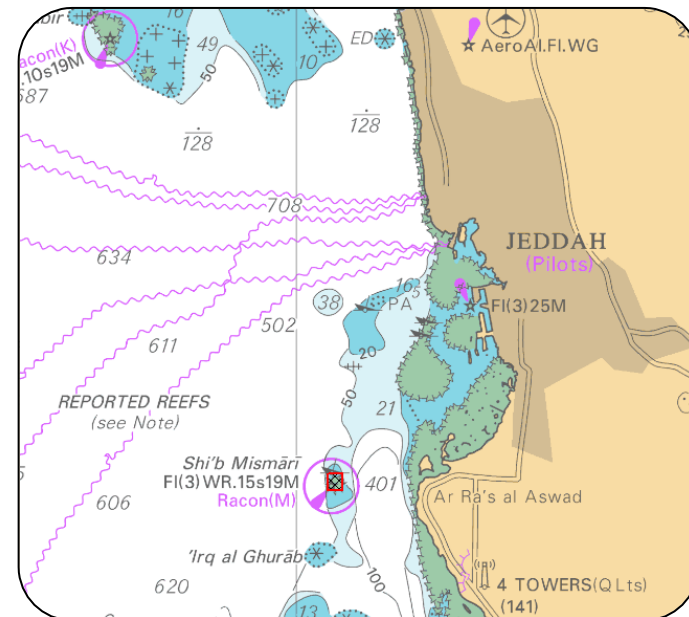
REEF

14NM south of Jeddah.

Width – 585m



Shi'b Mismāri Reef

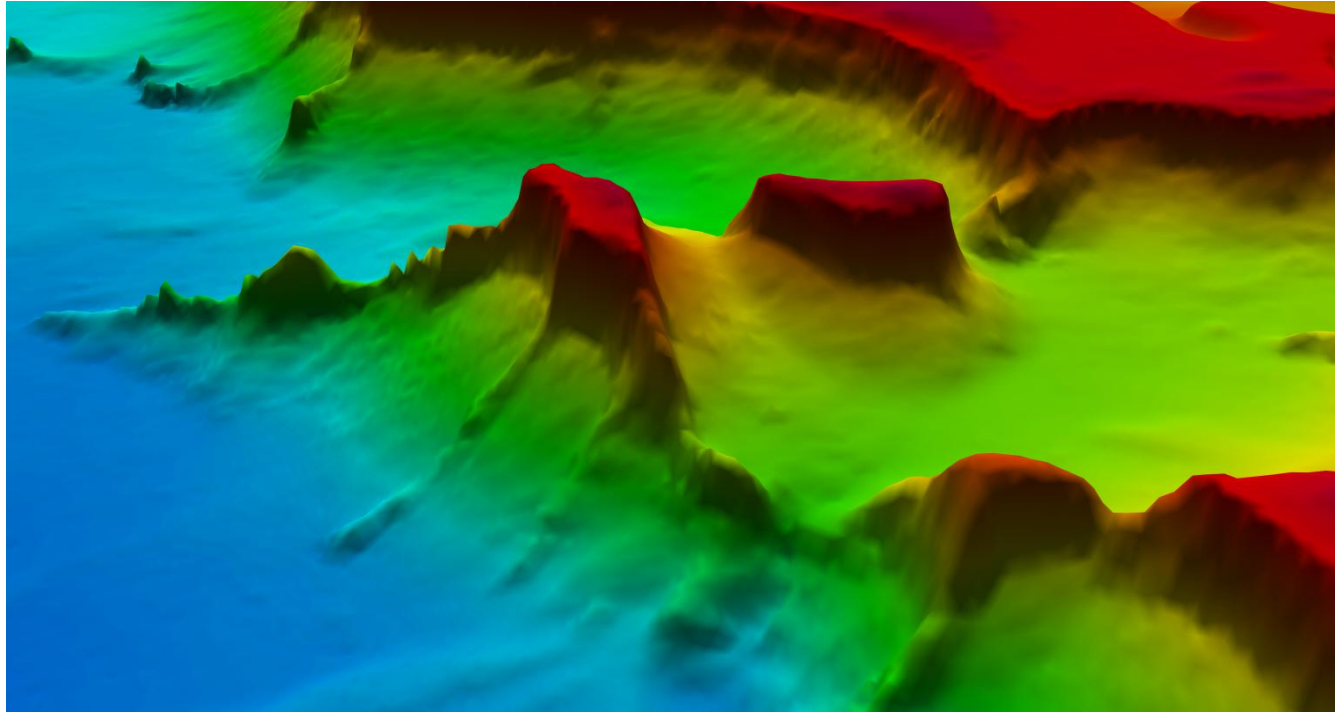




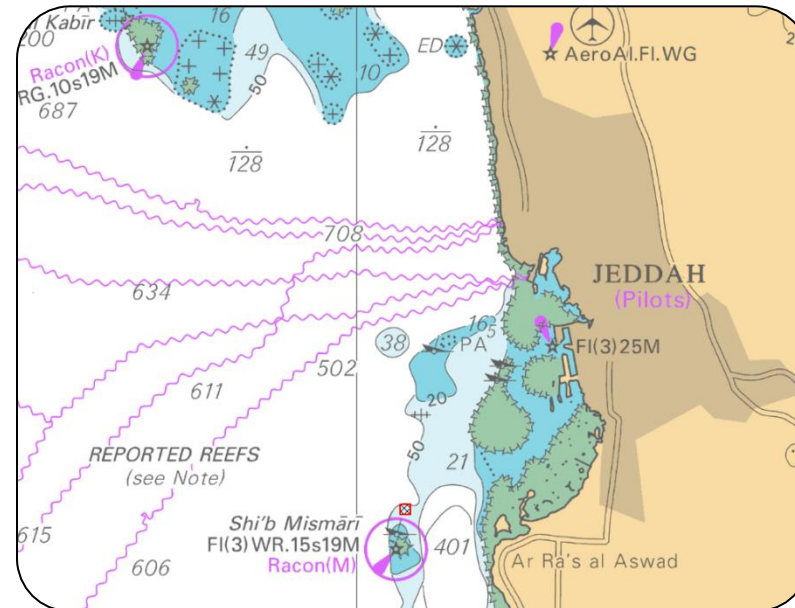
SEAMOUNT

4.6NM NW of Ar Ra's al Aswād.

Height - 70m Approx.



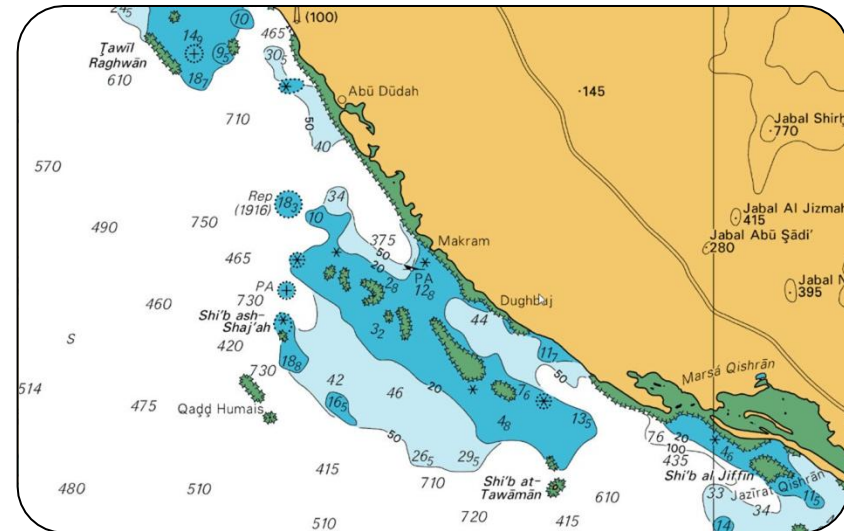
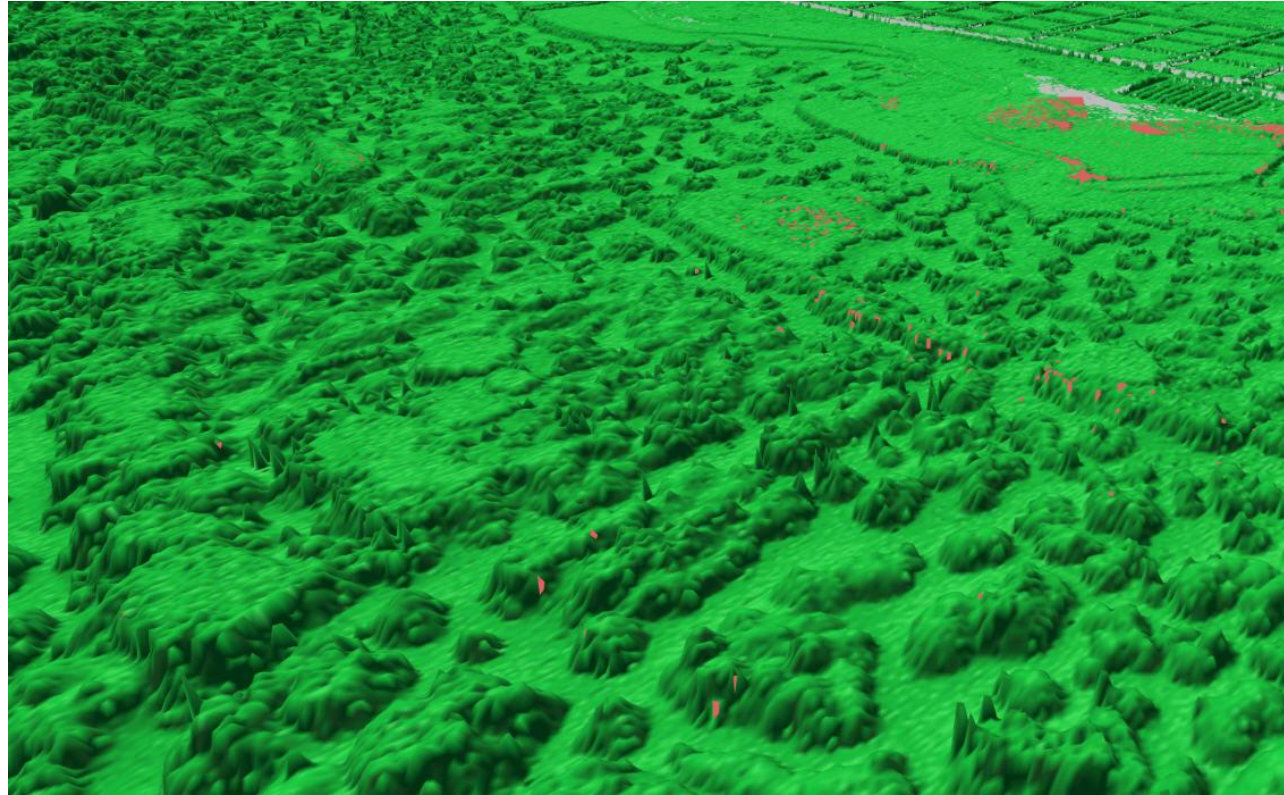
Block_A11
 21-21-08.97N 039-02-14.38E
 Length – 658m
 Shoalest Point – 52.45m
 Surrounding Depths – 55.29m to 64.35m
 Slope – 80.05m to 394.94m
 General Depths – 400m





MAKRAM REEFS

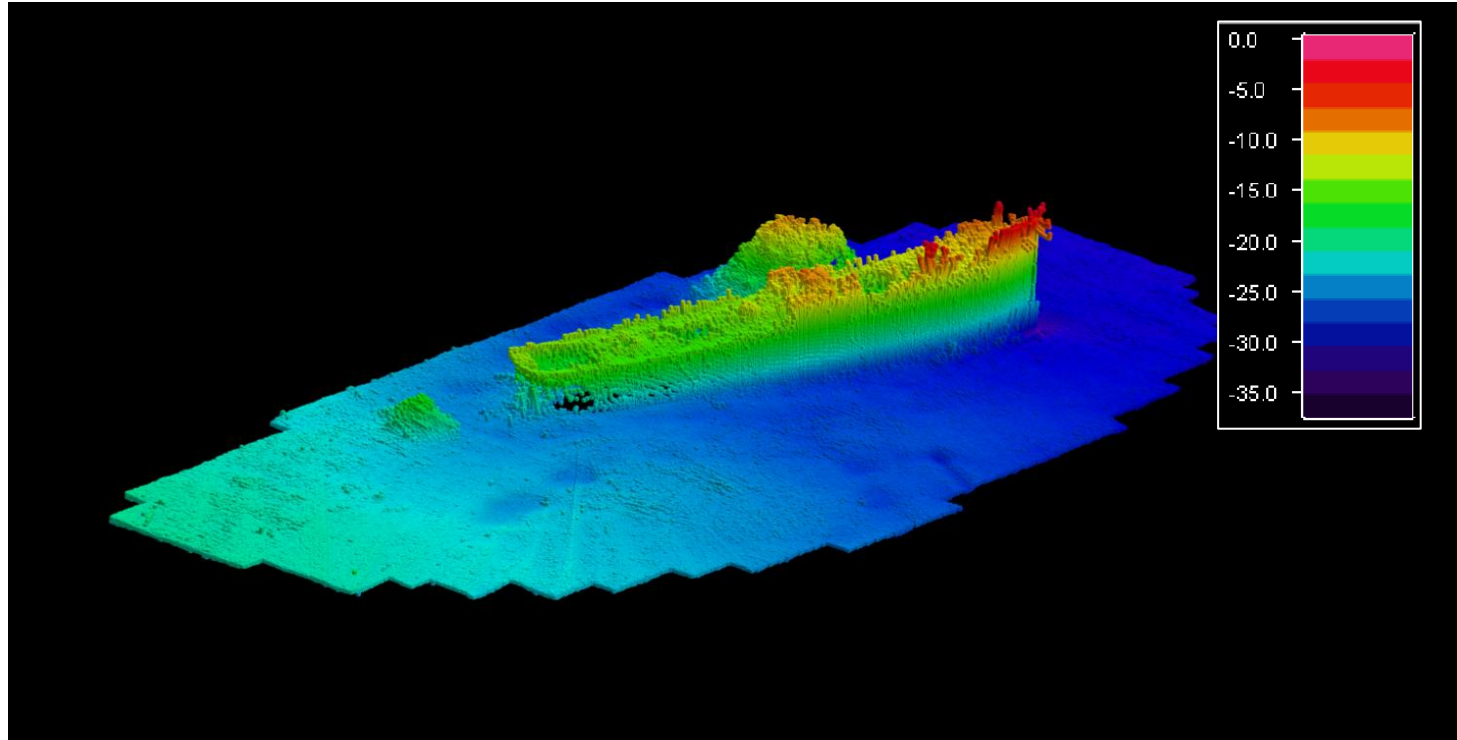
66 km NW of AL LITH.





WRECKS

JEDDAH HARBOUR.

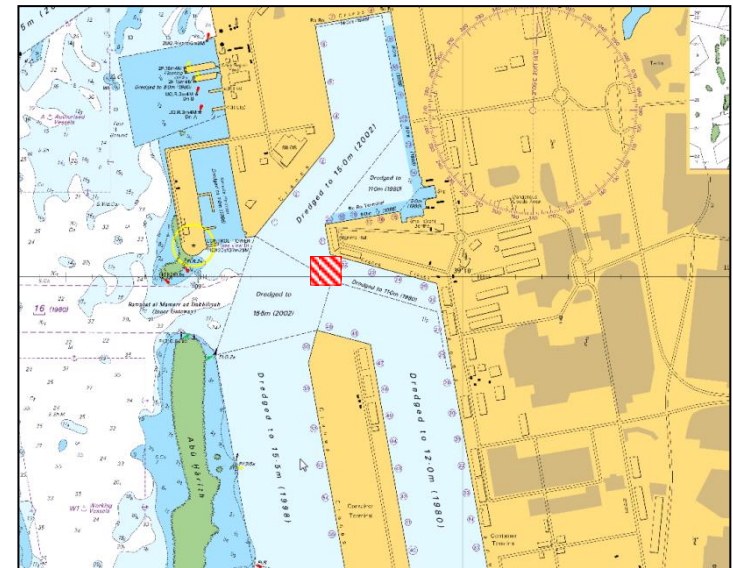


Position : $21^{\circ} 28' 01''.60$ N, $039^{\circ} 09' 23''.33$ E

Length : 104 M

Width : 12 M

Least depth : 11.6 M





WRECKS

JEDDAH HARBOUR.

Position : 21° 24' 47".43 N, 039° 08' 47".11 E

Length : 110 M

Width : 22 M

Least depth : 5.90 M

