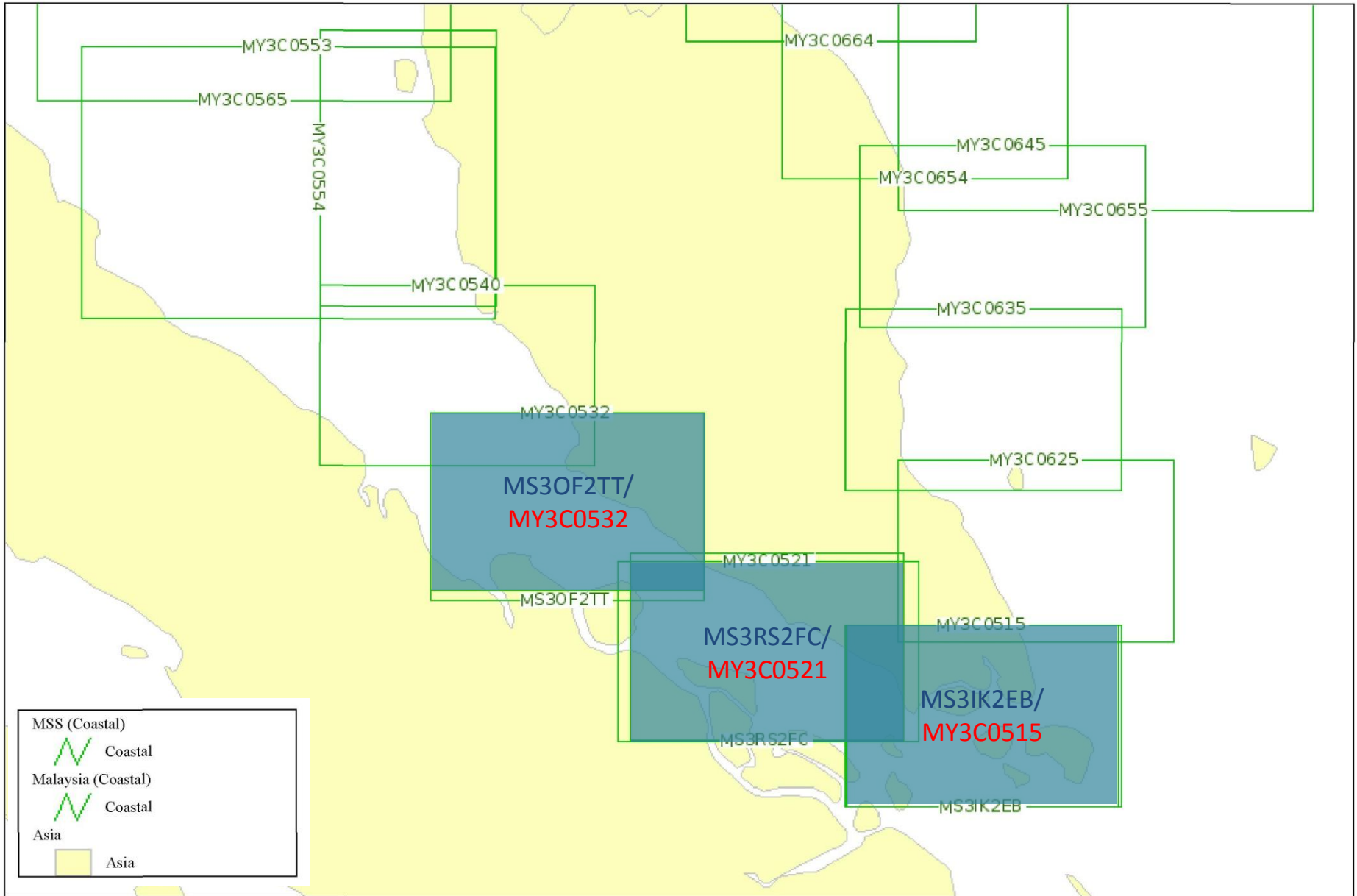


BAND 3 - COASTAL

Lat: 5°48.963', Long: 97°41.464'

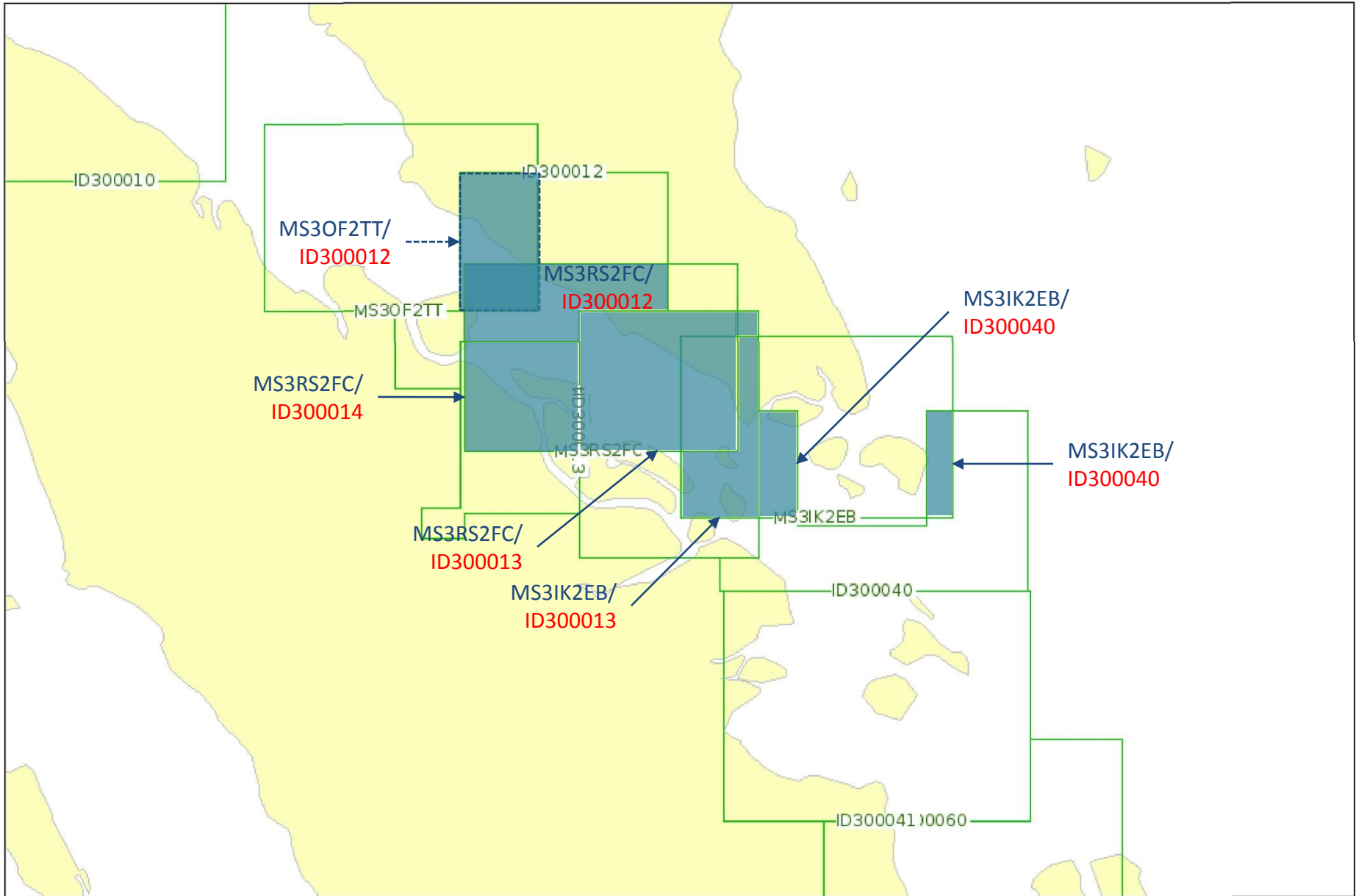
Scale 1:3'739'210



BAND 3 - COASTAL

Lat: 3°57.849', Long: 98°45.568'

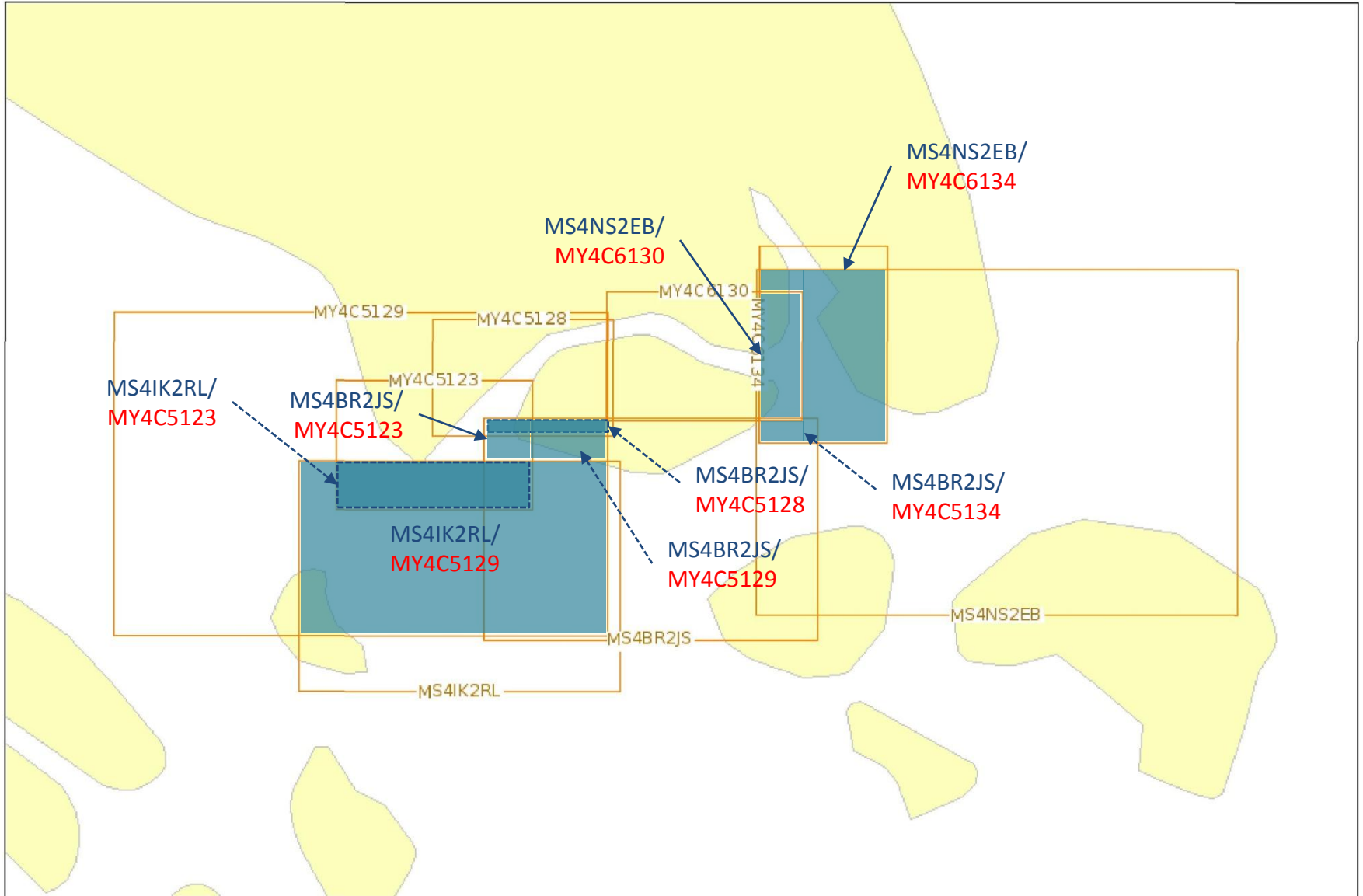
Scale 1:3'739'210



BAND 4 - APPROACH

Lat: 1°53.554', Long: 102°57.332'

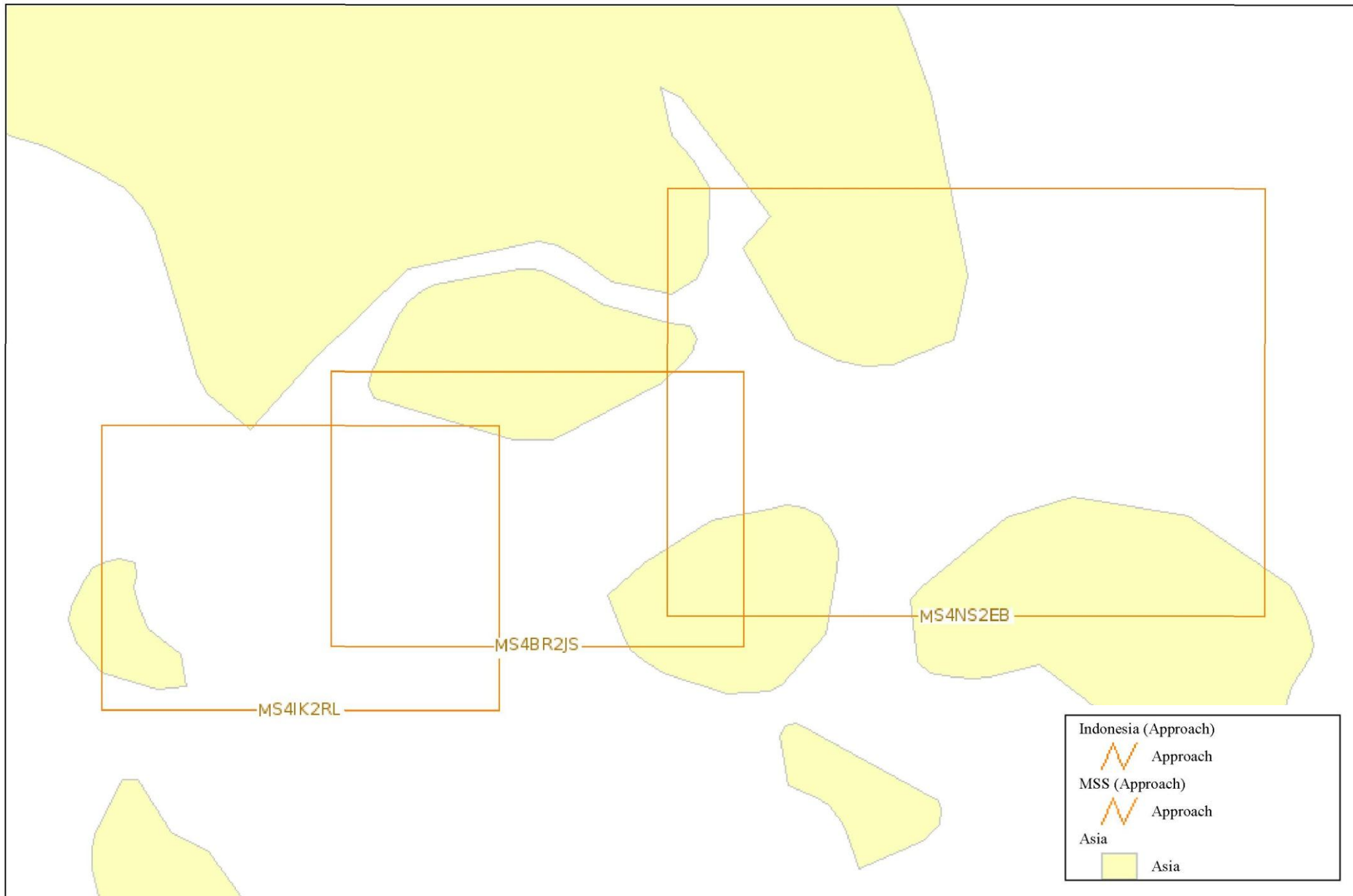
Scale 1:788'213



BAND 4 - APPROACH

Lat: 1°43.915', Long: 103°14.806'

Scale 1:636'049

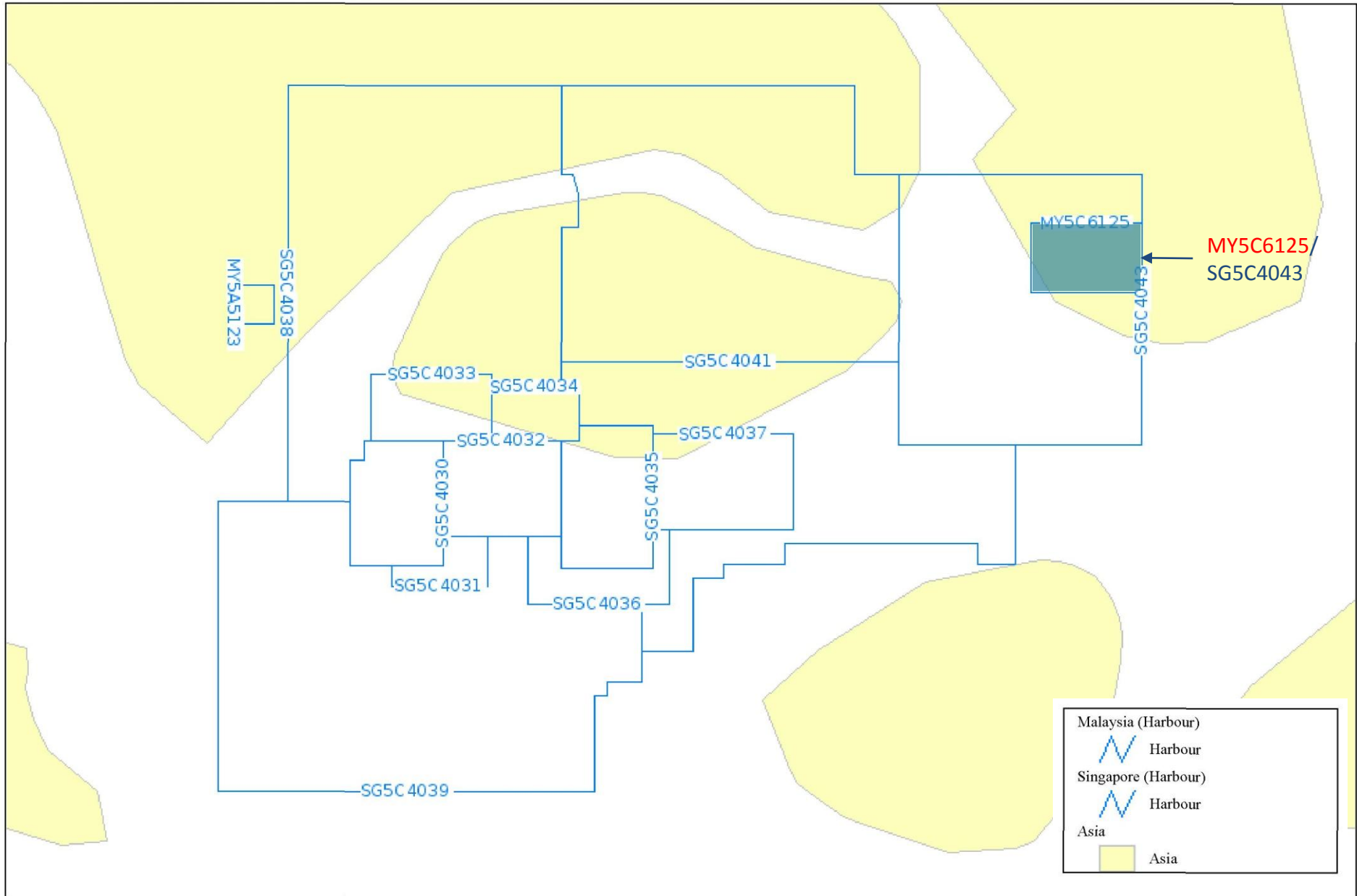


Indonesia (Approach)		Approach
MSS (Approach)		Approach
Asia		Asia

BAND 5 - HARBOUR

Lat: 1°34.599', Long: 103°22.315'

Scale 1:408'439



BAND 5 - HARBOUR

Lat: 1°37.035', Long: 103°18.383'

Scale 1:460'721

