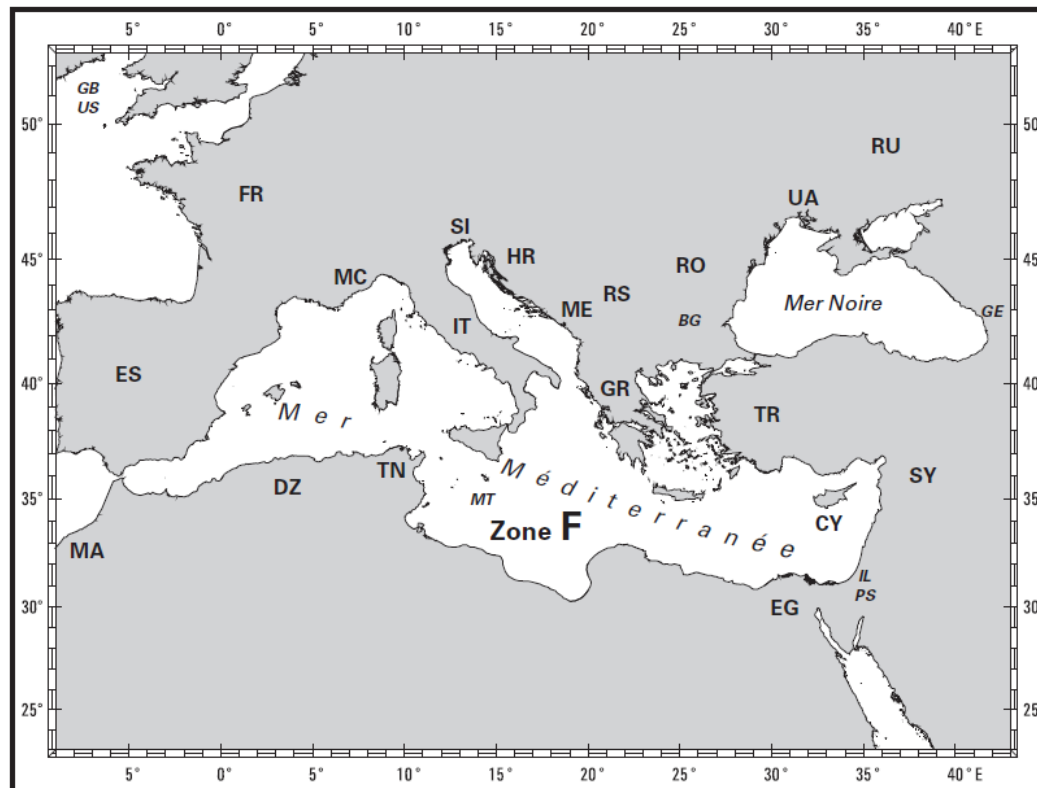




SHOM

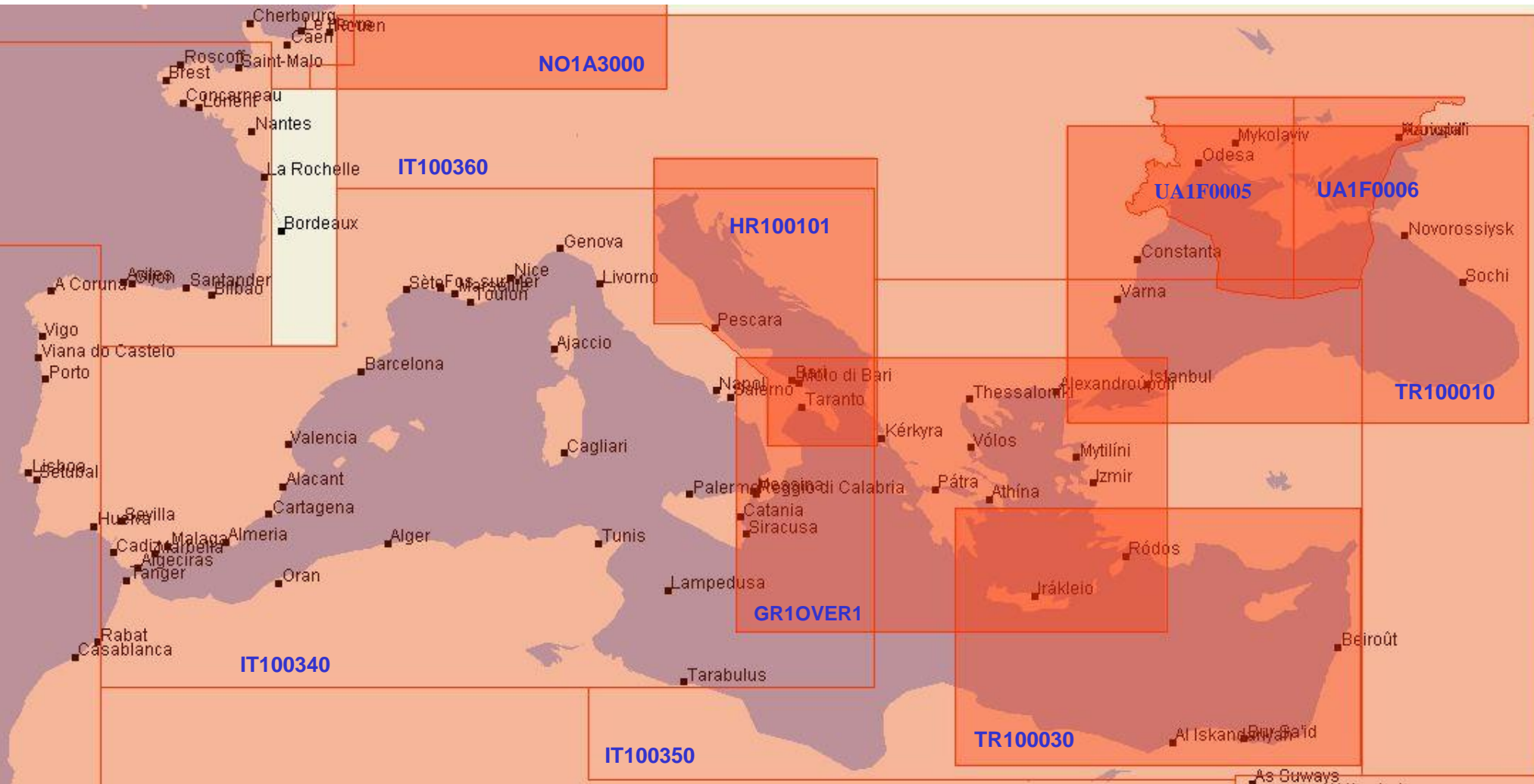
L'océan à la carte



Region F ICC WG

Status of the ENC scheme

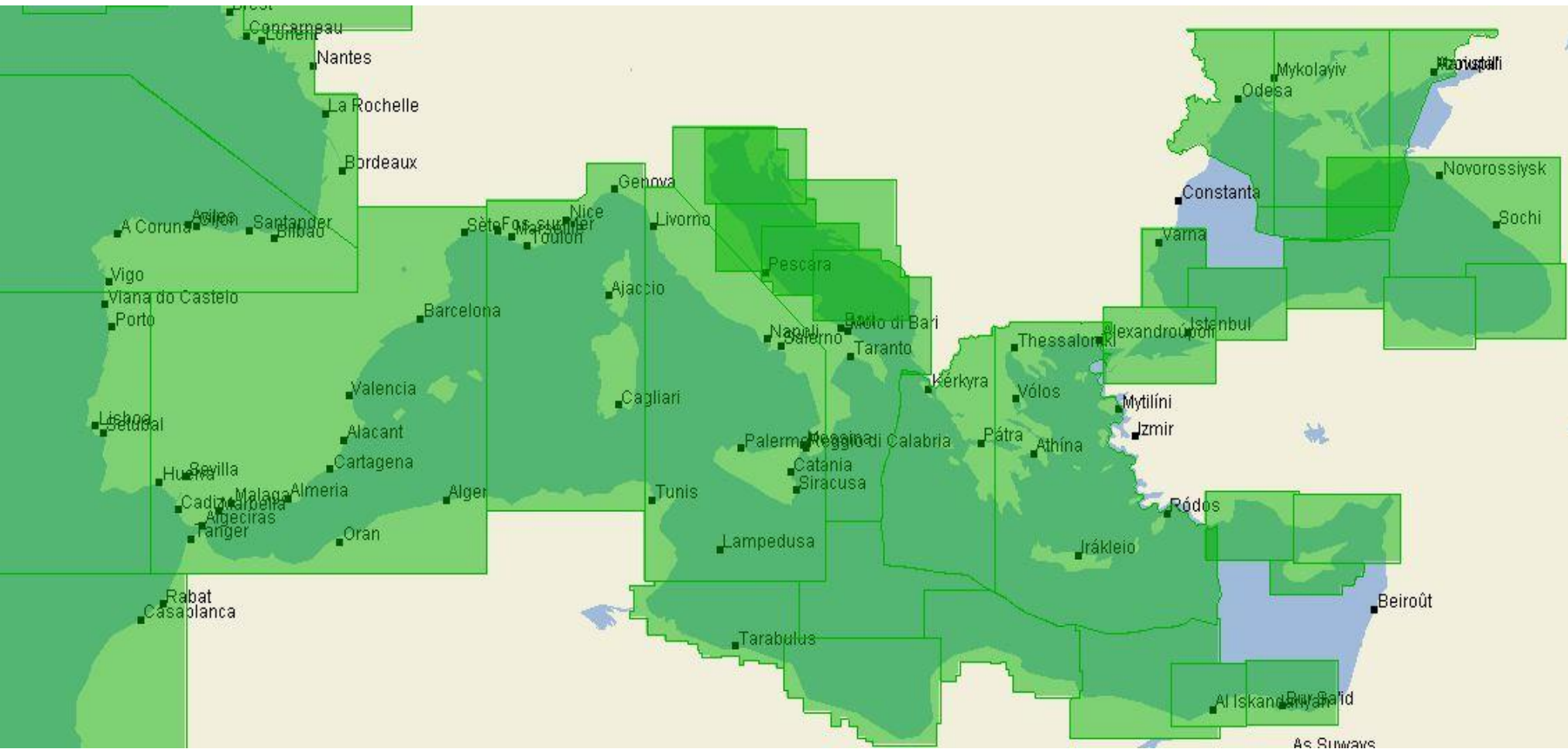
ENC UB 1 Status (Overview)



Source: Primar.org (2014)

WEND WG#6 – Region F&G overview – Stavanger (Norway)

ENC UB 2 Status (General)

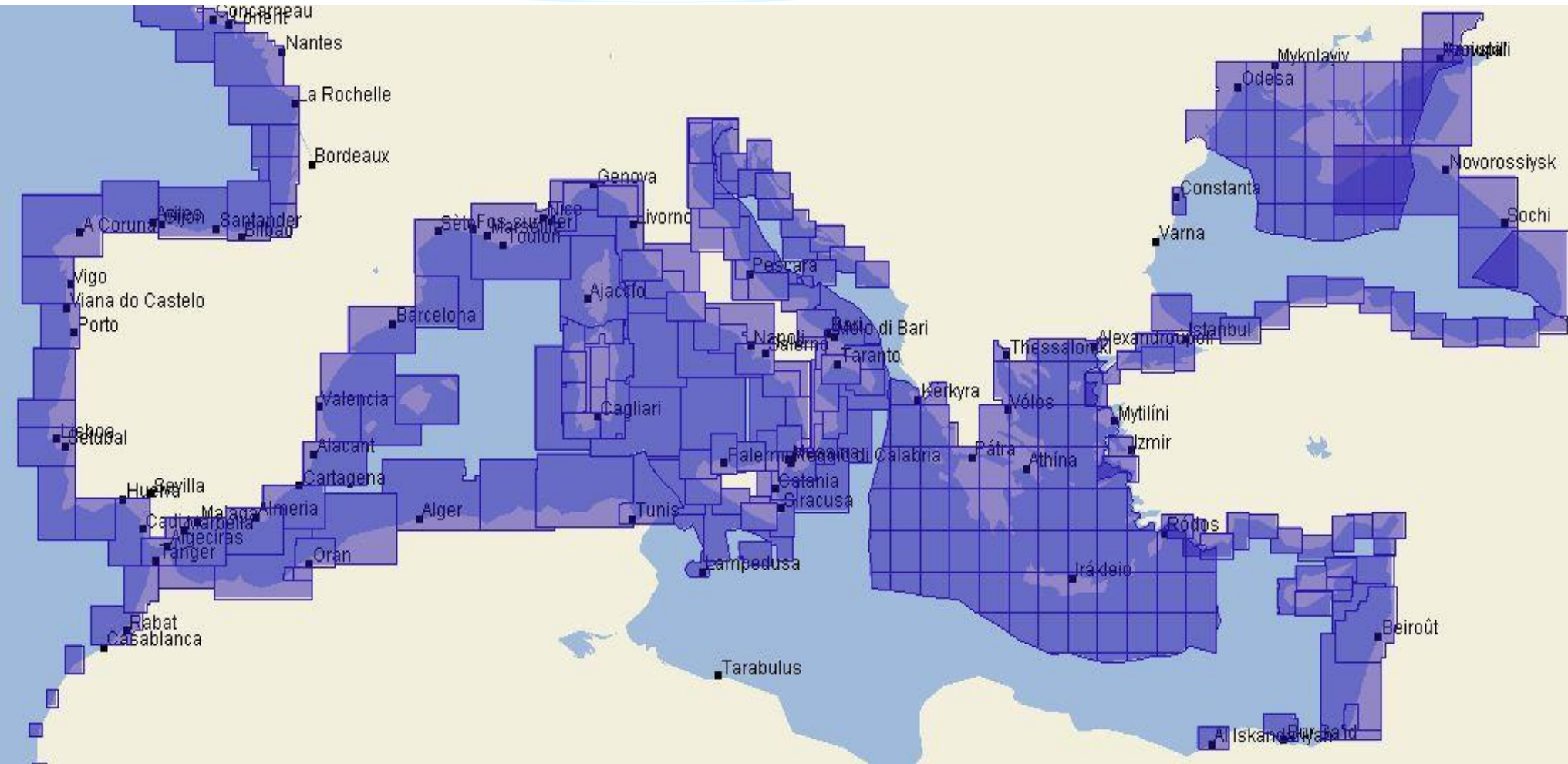


Source: Primar.org (2014)

WEND WG#6 – Region F&G overview – Stavanger (Norway)

March 8-10th 2016

ENC UB 3 Status (Coastal)



Source: Primar.org (2014)

WEND WG#6 – Region F&G overview – Stavanger (Norway)

Status of Region F ENC scheme

MBSHC19 (July 15, GE): Outcomes

- Full review of the UB1 overlapping cases was performed at the ICCWG side-meeting,
- Actual disparate UB1 scheme in contradiction with well-established small scale INT chart scheme covering the region,
- the persistency of those UB1 scheme overlapping cases and the significant domino effect associated with the resolution of UB2 and UB3 overlapping cases prevented the ICCWG from properly addressing UB2 and UB3 issues.

Status of Region F ENC scheme

MBSHC19 (July 15, GE): Decisions

→ **MBSHC19/27**: task all ENC producer nations concerned by those UB1 overlaps (HR, GR, IT and TR) to liaise with each other under the coordination of IT and to report back to RCC on the resolution of those overlapping cases by the end of the year.

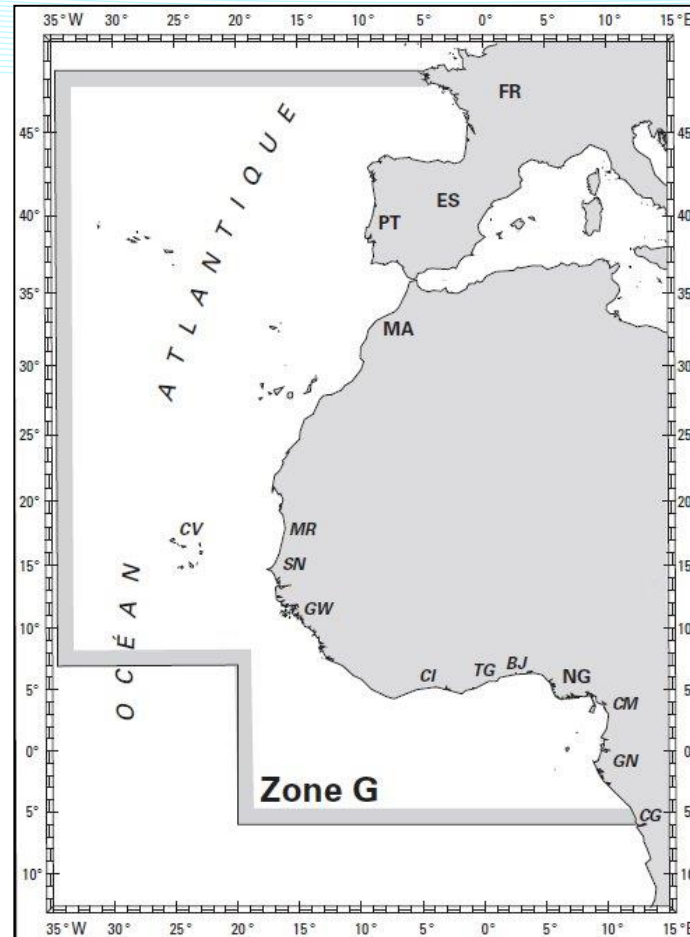
→ **MBSHC19/28**: RCC to report back to the MBSHC Chair in order to take proper action.

→ **MBSHC19/29**: focusing the work of ICCWG on the approval of larger scale usage bands, such as UB4-5-6, as an alternative to move forward on the approval of ENC schemes in the region.



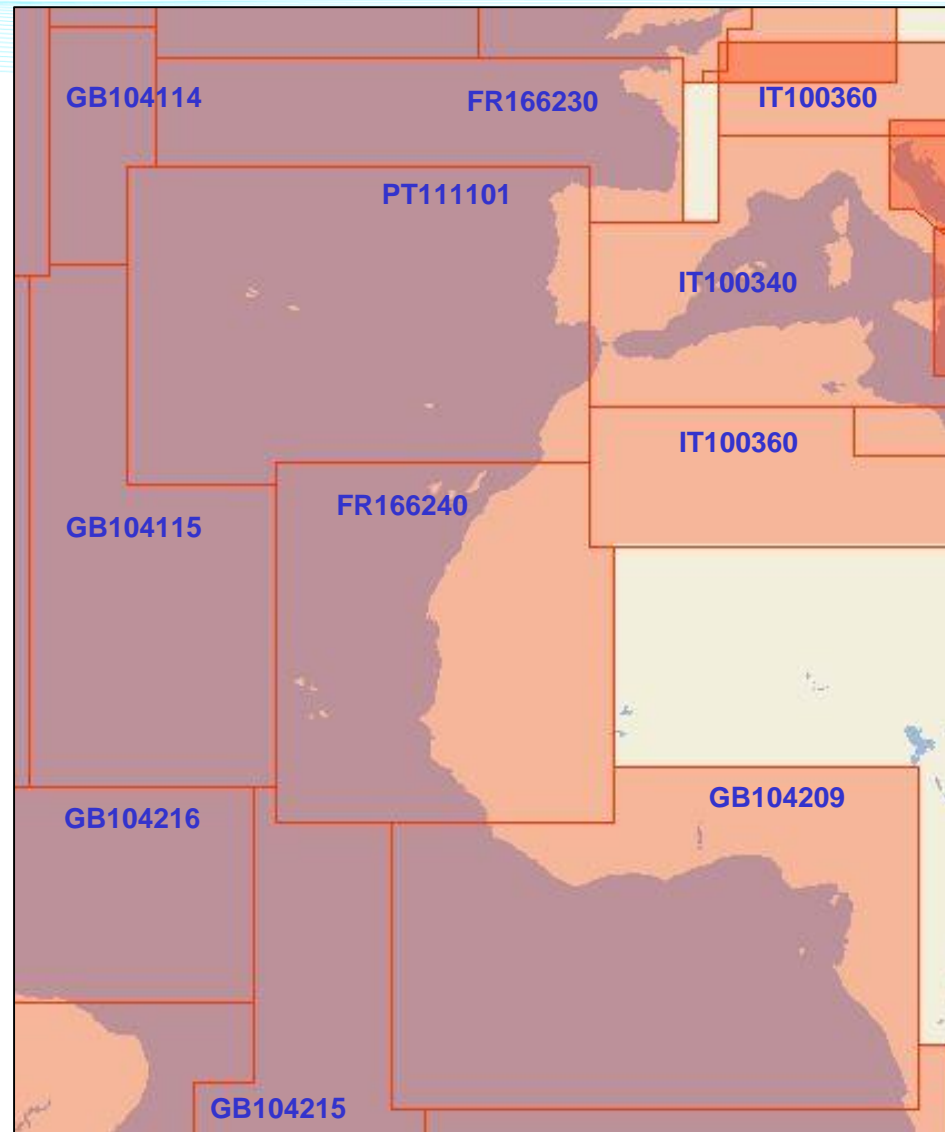
SHOM

L'océan à la carte



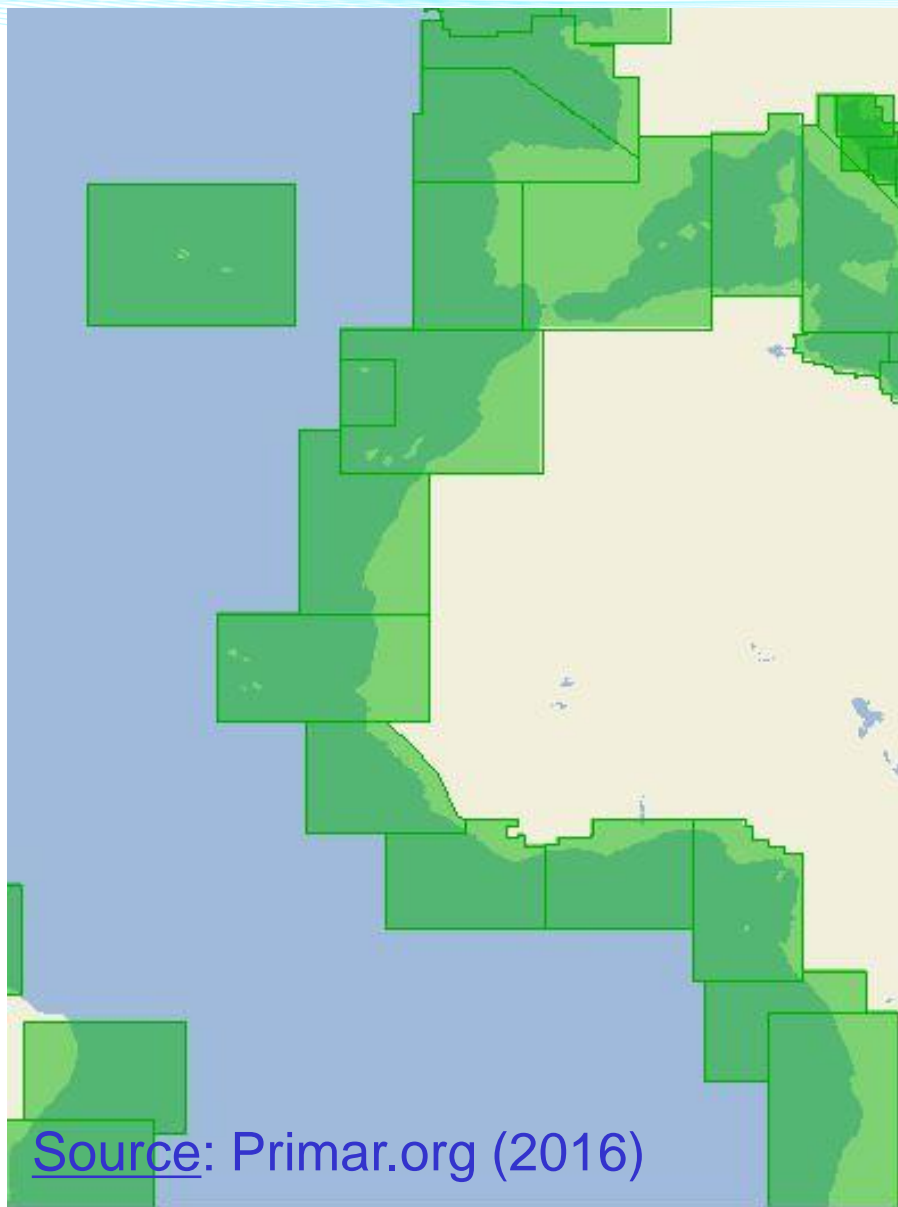
Region G ICC WG Status of the ENC scheme

ENC UB 1 Status (Overview)

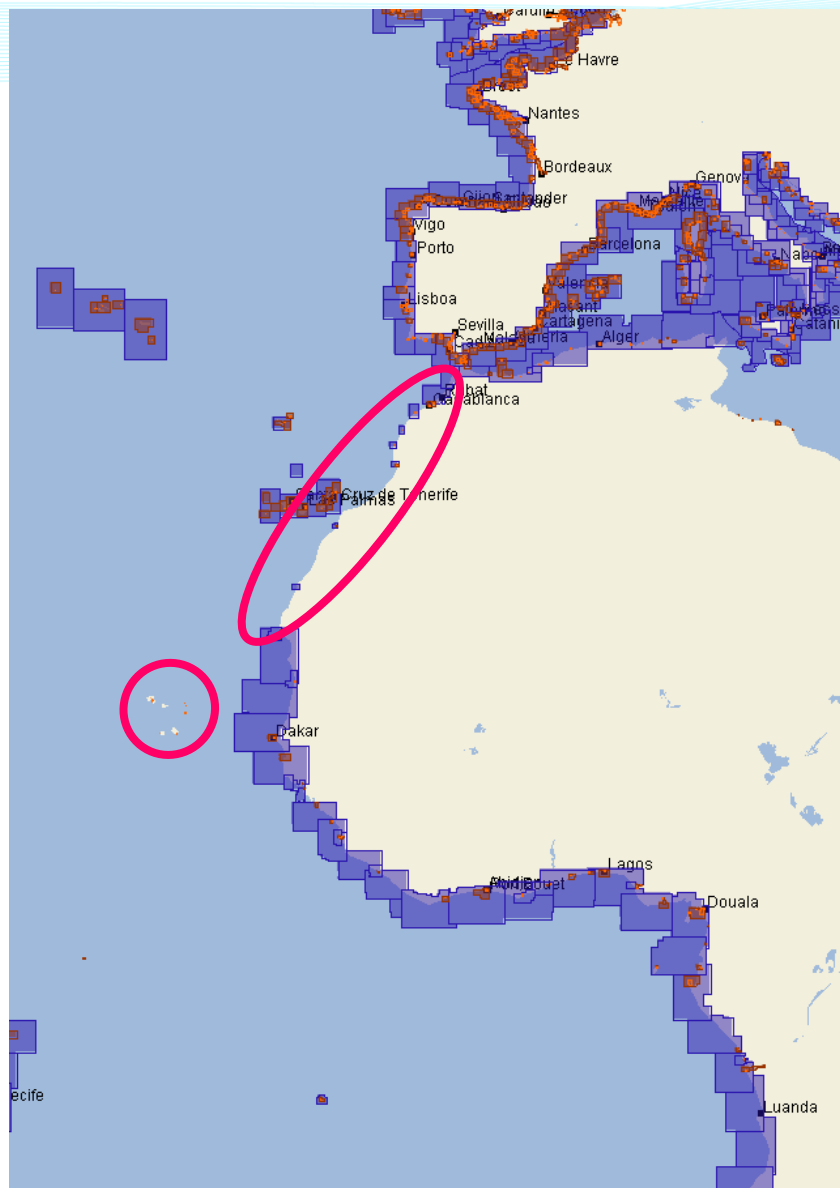


Source: Primar.org (2016)

ENC UB 2-3/4/5 Status (Overview)



Source: Primar.org (2016)



Status of Region G ENC scheme

- No pending overlapping cases in this region
(*Primar overlap checker verified*)
- UB1 and UB2 coverage completed.
- UB3 with gaps on African northwest coast (MA,MR,CV)