

WENDWG 6



Stavanger

Agenda

 **Who are we?**

 **Main Topic**

PresLib 4.0 – Consequences in Shipping

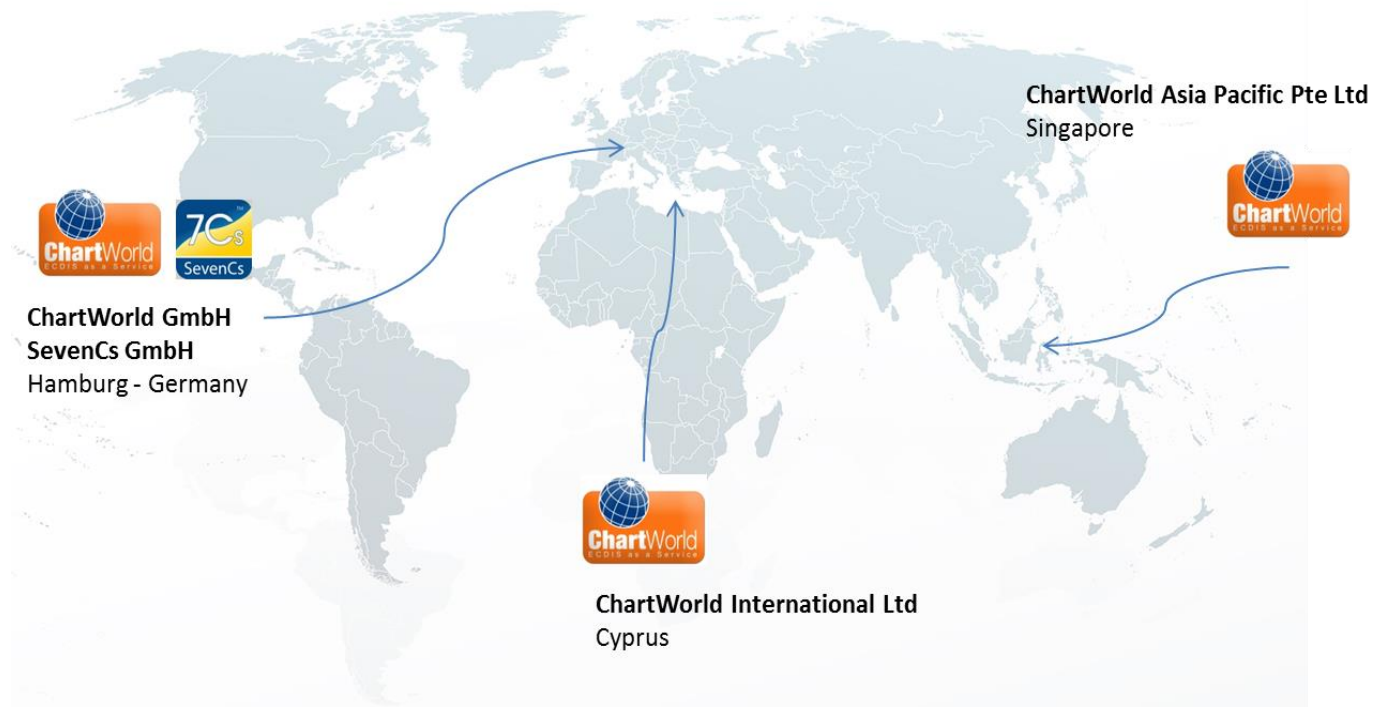
 **Q&A**



Who are we?

- 🌐 **Founded: 1992**
- 🌐 **Employees: 80+**
- 🌐 **Locations: 3**

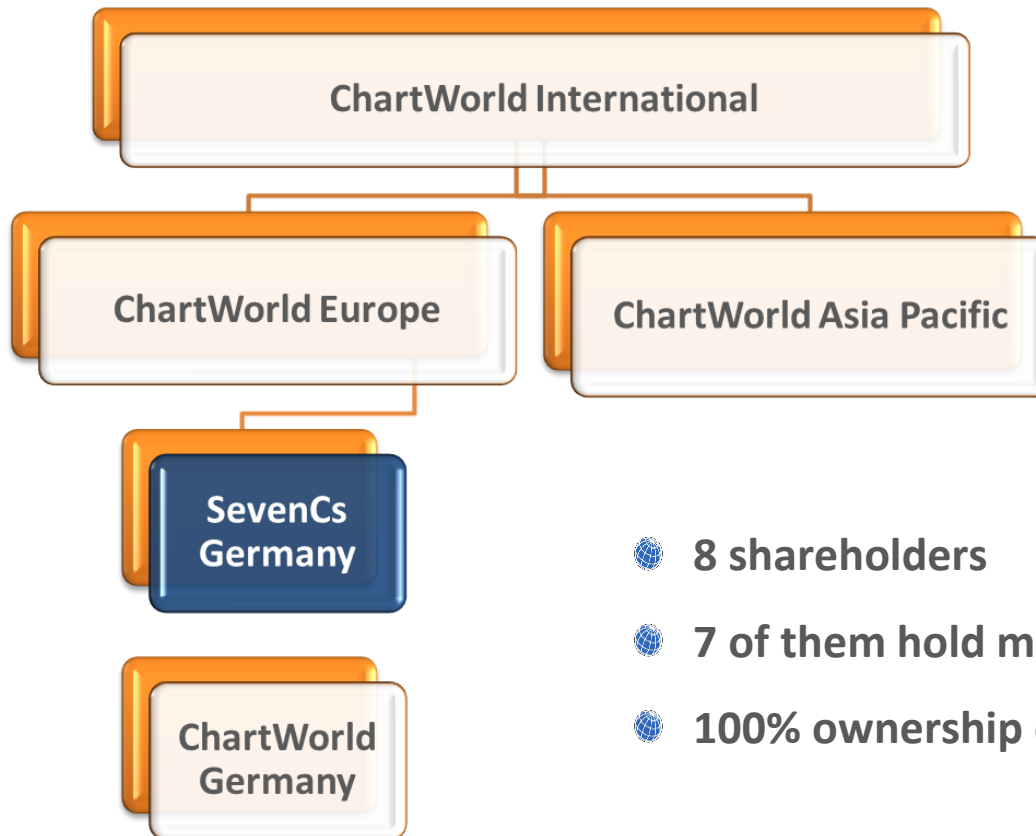
 **made
in
Germany**



- 🌐 **Creator of the ENC Standard S-52 & S-57**
- 🌐 **Member of IHO working groups (20+ years)**
- 🌐 **Member of Inland ENC Harmonization Groups & CIRM**

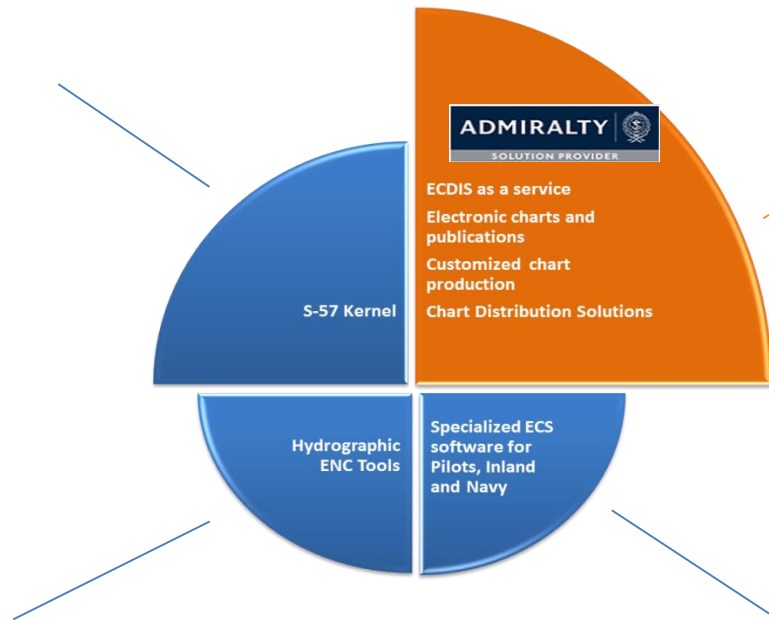
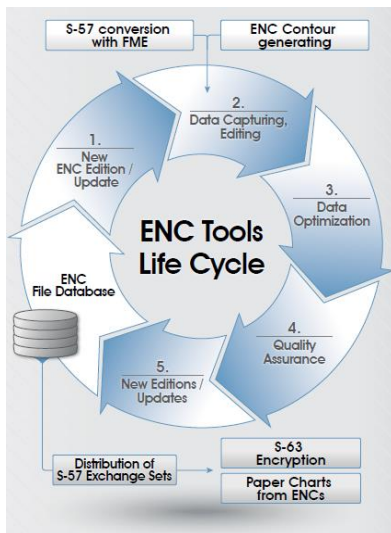
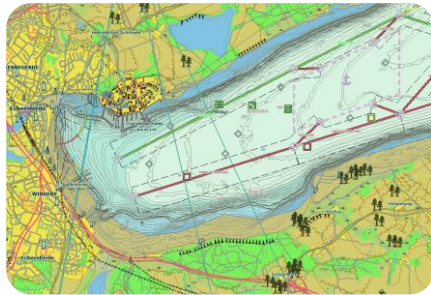


Who are we?



- 🌐 8 shareholders
- 🌐 7 of them hold more than 90%
- 🌐 100% ownership of daughter companies

Who are we?



Who are we?



- Shipping companies
- Hydrographic offices
- OEM (ECDIS, WECDIS, VTS etc.)
- Pilot Associations
- Defence companies
- etc.





Main Topic

Presentation Library

4.0

Consequences in Shipping

Main Topic

Timetable:

- 🌐 **Start: Summer 2015**
- 🌐 **End: Autumn 2016**
- 🌐 **Transas & SevenCs the first**
- 🌐 **Request for prolongation**
- 🌐 **Prolongation approved (last week)**

Main Topic

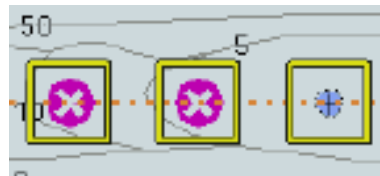
Positive:

- 🌐 Many clarifying changes
- 🌐 More details & clear specifications
- 🌐 Less room for interpretation, i.e. definition of dangers
- 🌐 S-64 Test Data Set very helpful
- 🌐 Simplified testing
- 🌐 Better argumentation towards TA

Main Topic

To think about:

- 🌐 Huge amount of development work, i.e. provide a full update history up to 23.11.2012
- 🌐 Many inconsistencies, i.e. danger highlighting



(underwater rock)

- 🌐 IHO S-64 / S-102 WG, February 2016 agrees: “There is a lot to do!”

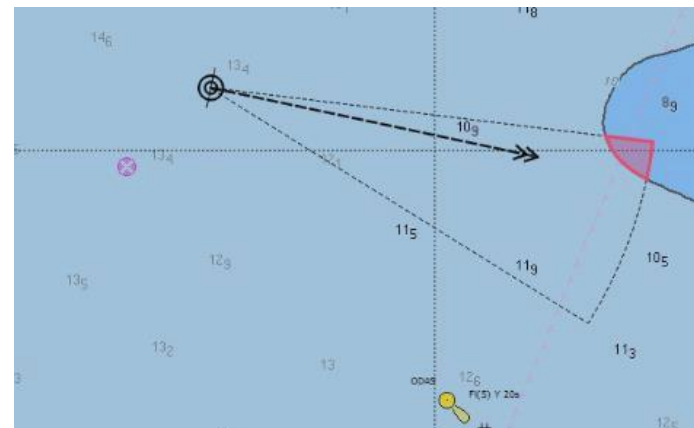
Main Topic

To think about:

- More contour lines (not only 2, 5, 10, 20...)
- Review alert reduction, i.e. rock approach (up to manufacturer)



Before PresLib 4.0

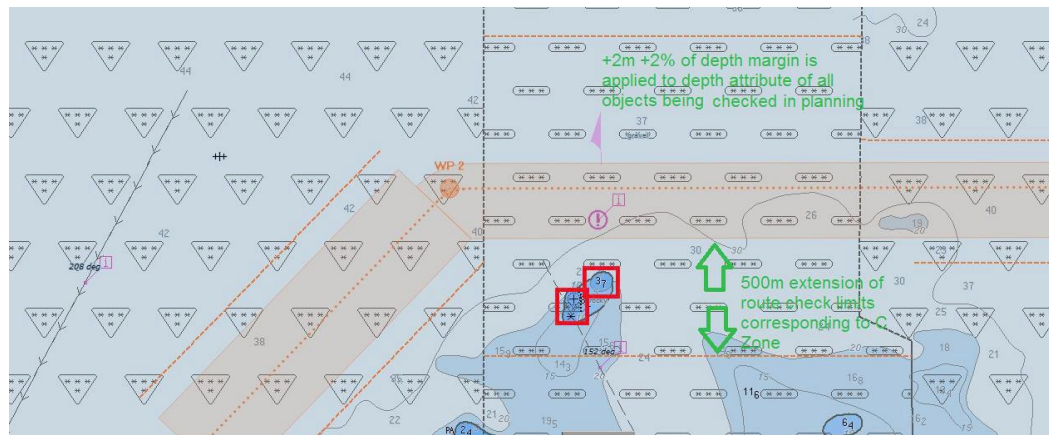


PresLib 4.0

Main Topic

To think about:

CATZOC, depending on HO's

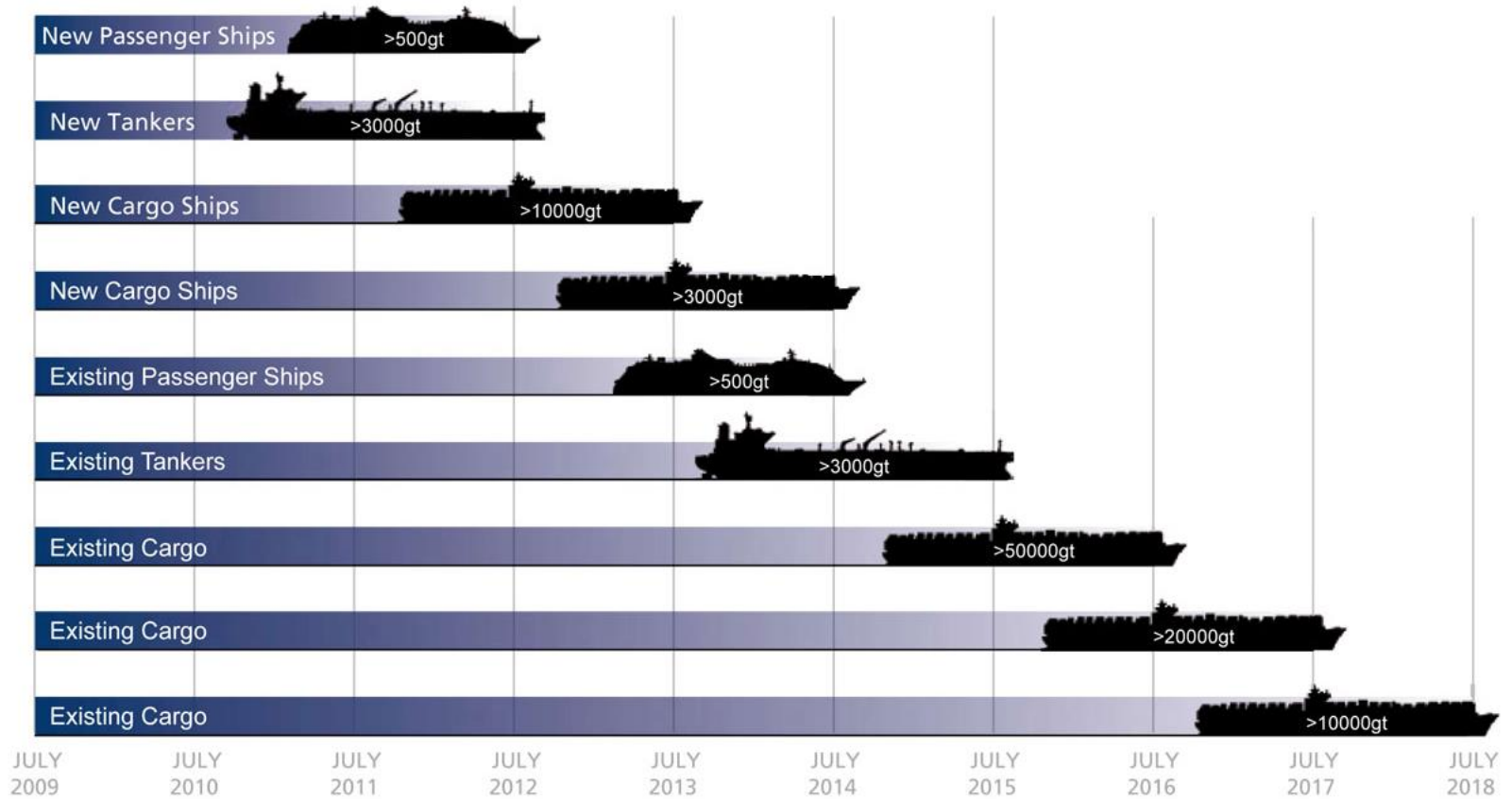


Goal = worldwide use

Situation improved dramatically

still far from sufficient

Main Topic



Main Topic

Economical Consequences:

- **General market downturn**
- **+ Carriage requirement costs**
- **+ Technical upgrade costs**
- **+ Crew training costs**
- **+ S-100 transformation costs**

Q&A

