

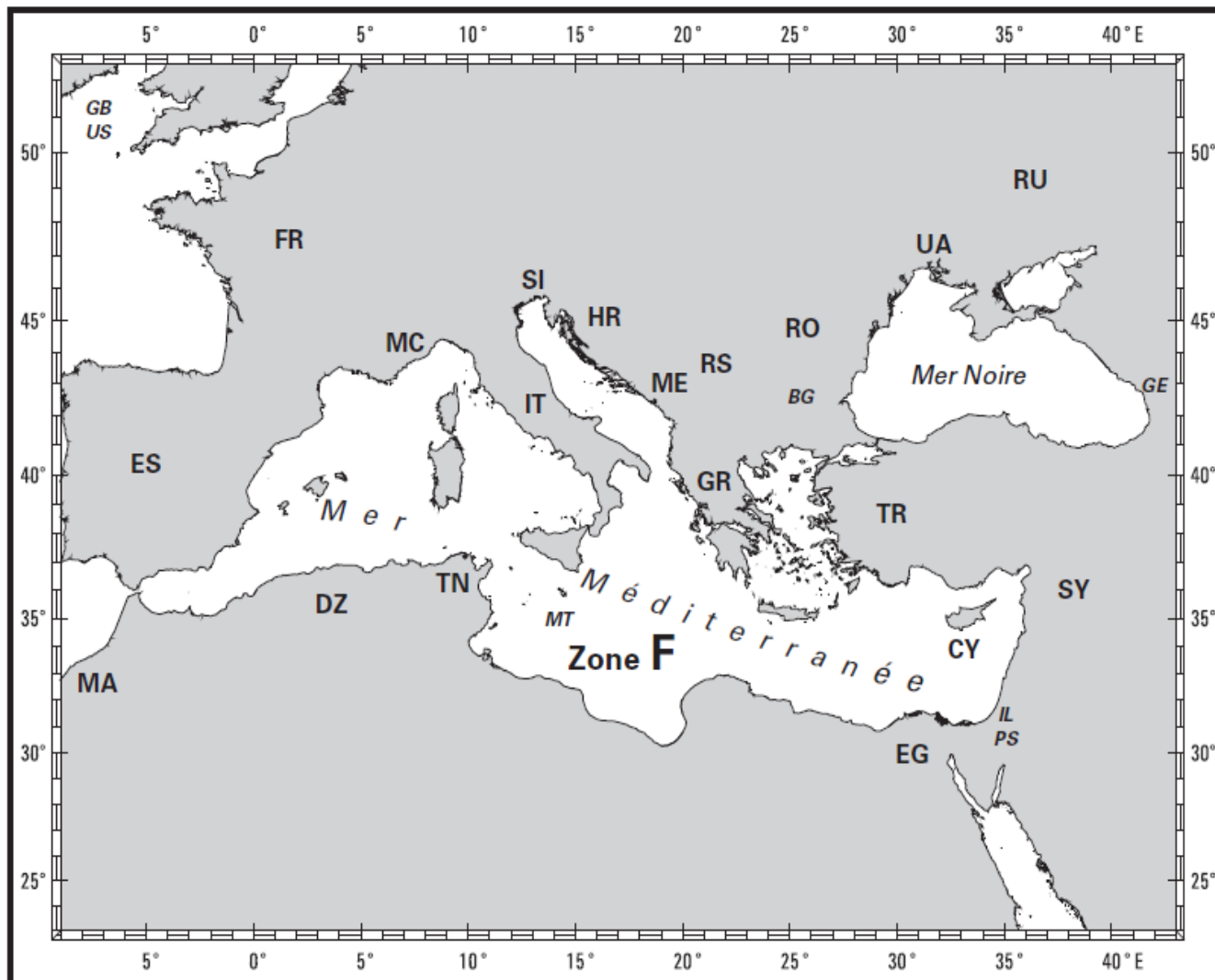


# ENC Status Regions F & G

WENDWG7-31Jan-2Feb 2017

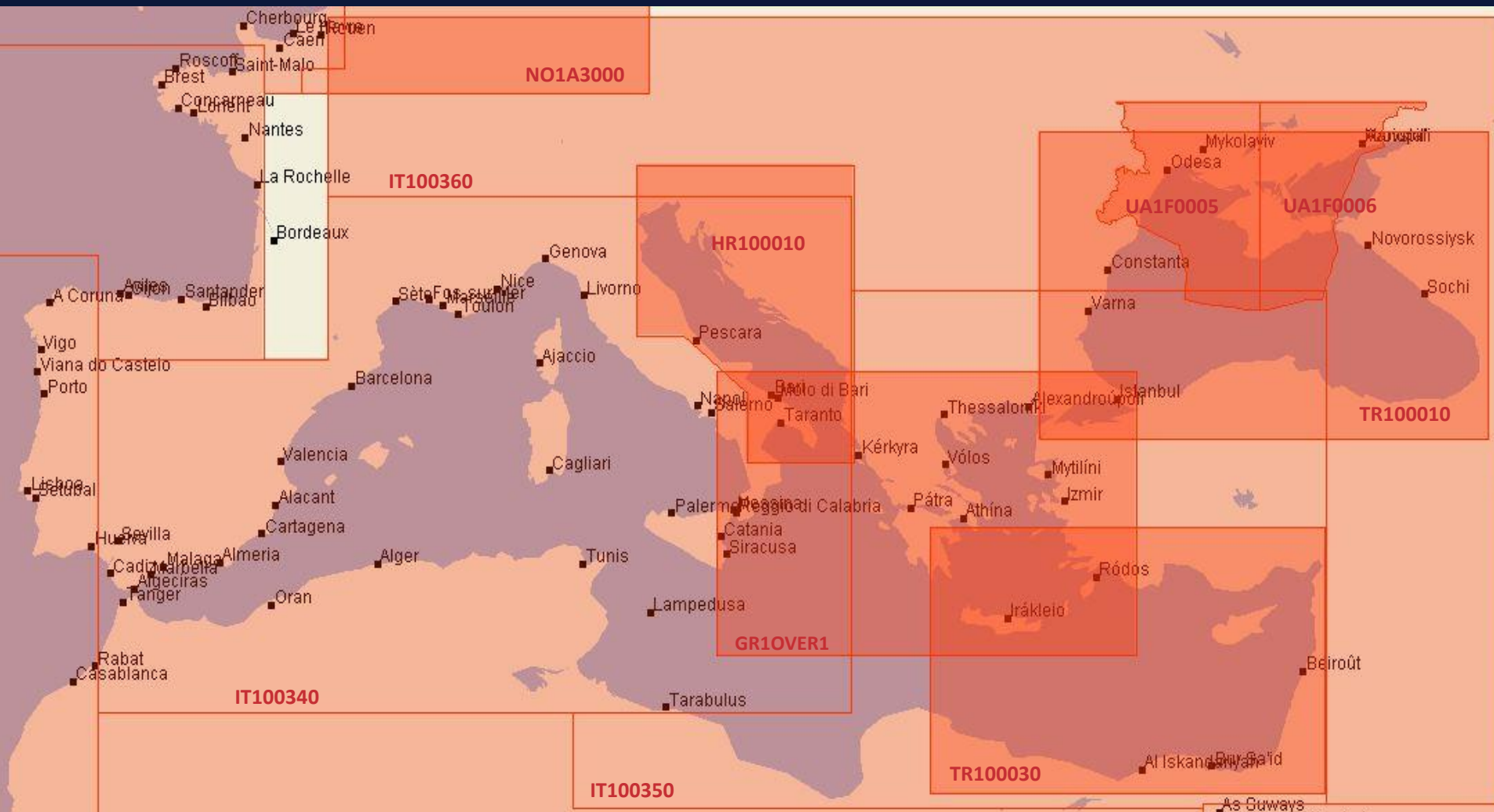
# REGION F ICC WG

## STATUS OF THE ENC SCHEME



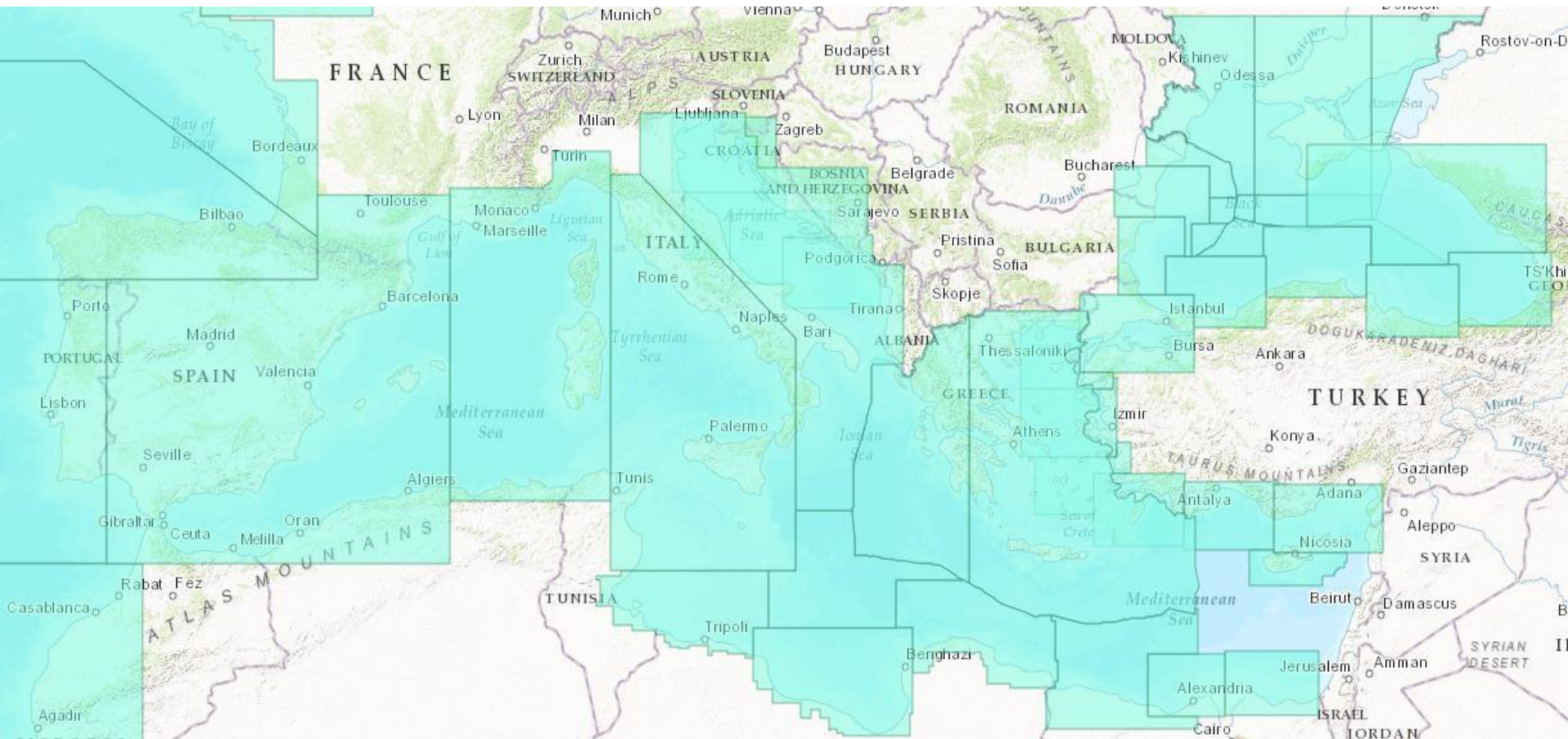
# ENC UB 1 STATUS (OVERVIEW)

SOURCE: PRIMAR.ORG (2017)



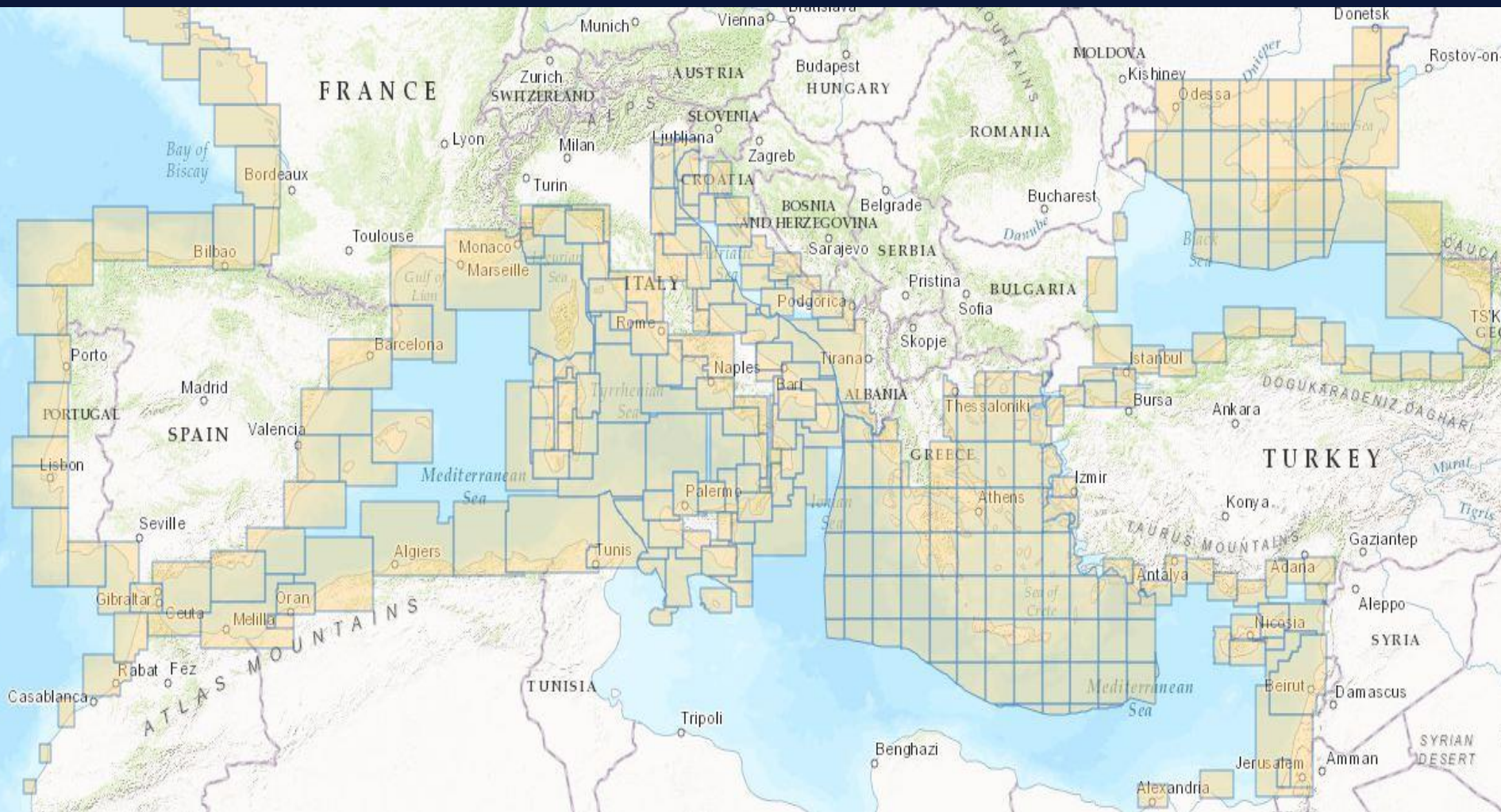
# ENC UB 2 STATUS (GENERAL)

SOURCE: ENC COVERAGE CATALOGUE (2017)



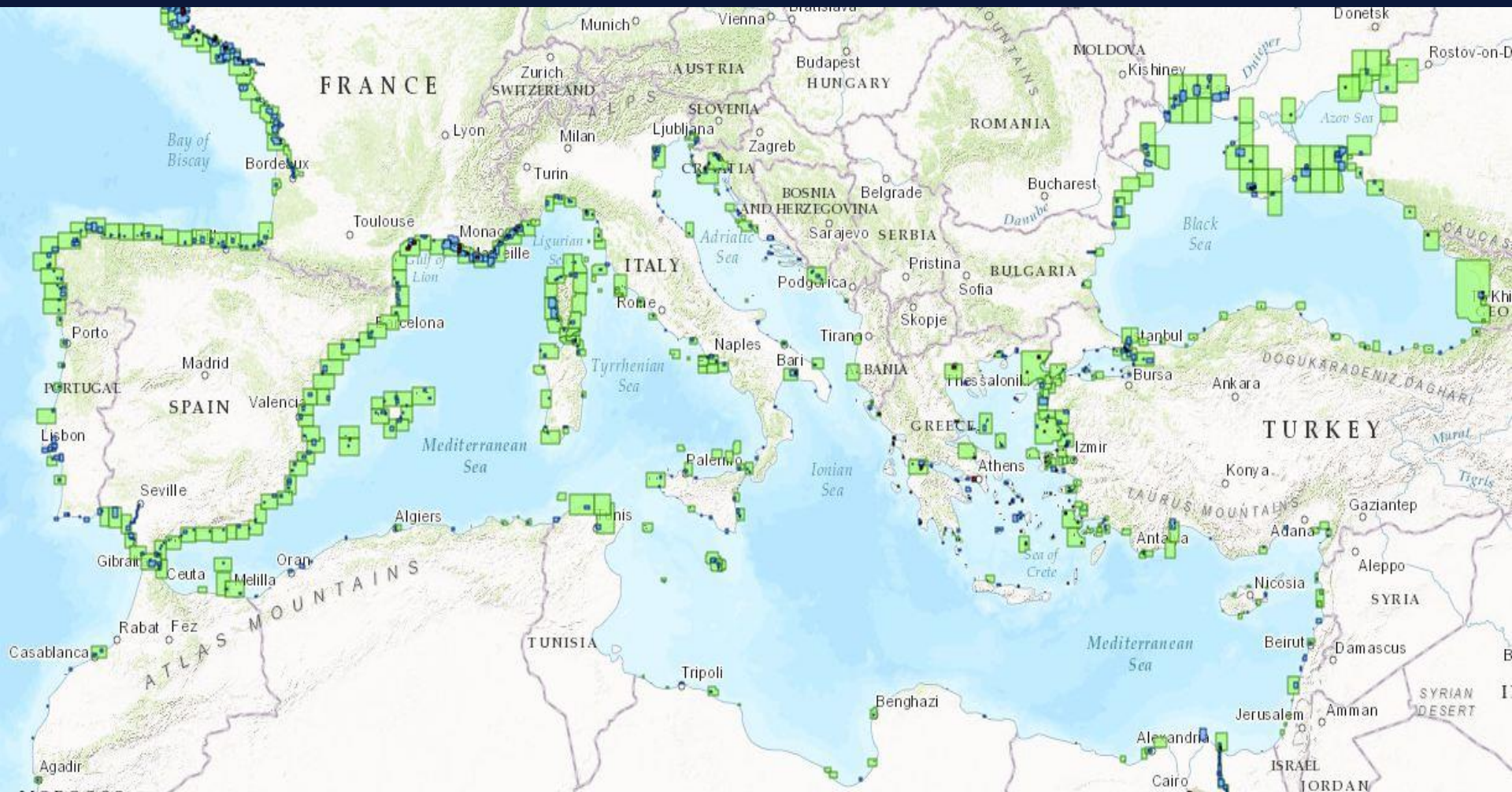
# ENC UB 3 STATUS (COASTAL)

SOURCE: ENC COVERAGE CATALOGUE (2017)



# ENC UB 4/5/6 STATUS

SOURCE: ENC COVERAGE CATALOGUE (2017)



# OVERLAP CHECKER 'HITS' COMPARISON



→ Based on Primar Overlap Checker 'Hits' of March 2015 and January 2017.

→ 1 'Hit' = 1 line in POC's result table

→ 'OO' = Own Overlap

Region F	2015	2017
UB1-2-3	91	93
UB4-5-6	119	56
Total	210	149
OO	80 (38%)	39 (26%)

## *MBSHC19/27*

**UB1** overlaps, **HR, GR, IT and TR** to **liaise with each other** under the **coordination of IT** and to report back to RCC on the resolution of those overlapping cases by the end of the year.

Italy reported back to the RCC that the **dialogue initiated with the Parties has not led to resolve any UB1 overlaps** so far

## *MBSHC19/29*

Focusing the work of ICCWG on the approval of **UB4-5-6**, as an alternative to move forward on the approval of ENC schemes in the region

Pending. Validation of those ENC schemes jeopardized by **high amount of overlap** cases (38% of total overlaps)



Persistency of UB1 overlapping cases

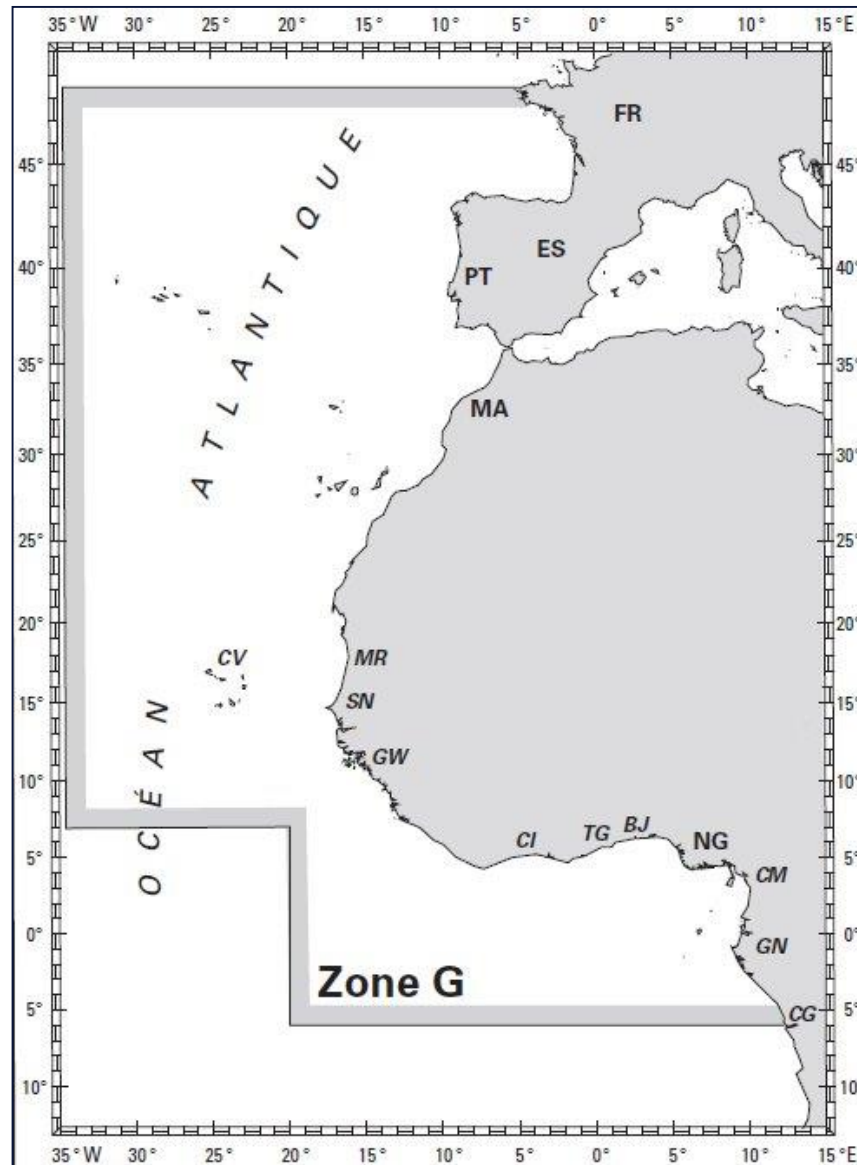
- Actual disparate UB1 scheme in contradiction with well-established small scale INT chart scheme,
- Obvious domino effect with the resolution of UB2/3 overlapping cases.

UB 4-5-6: many overlaps

**A Region F ICCWG side meeting is being scheduled alongside to the 1<sup>st</sup> IHO Assembly.**

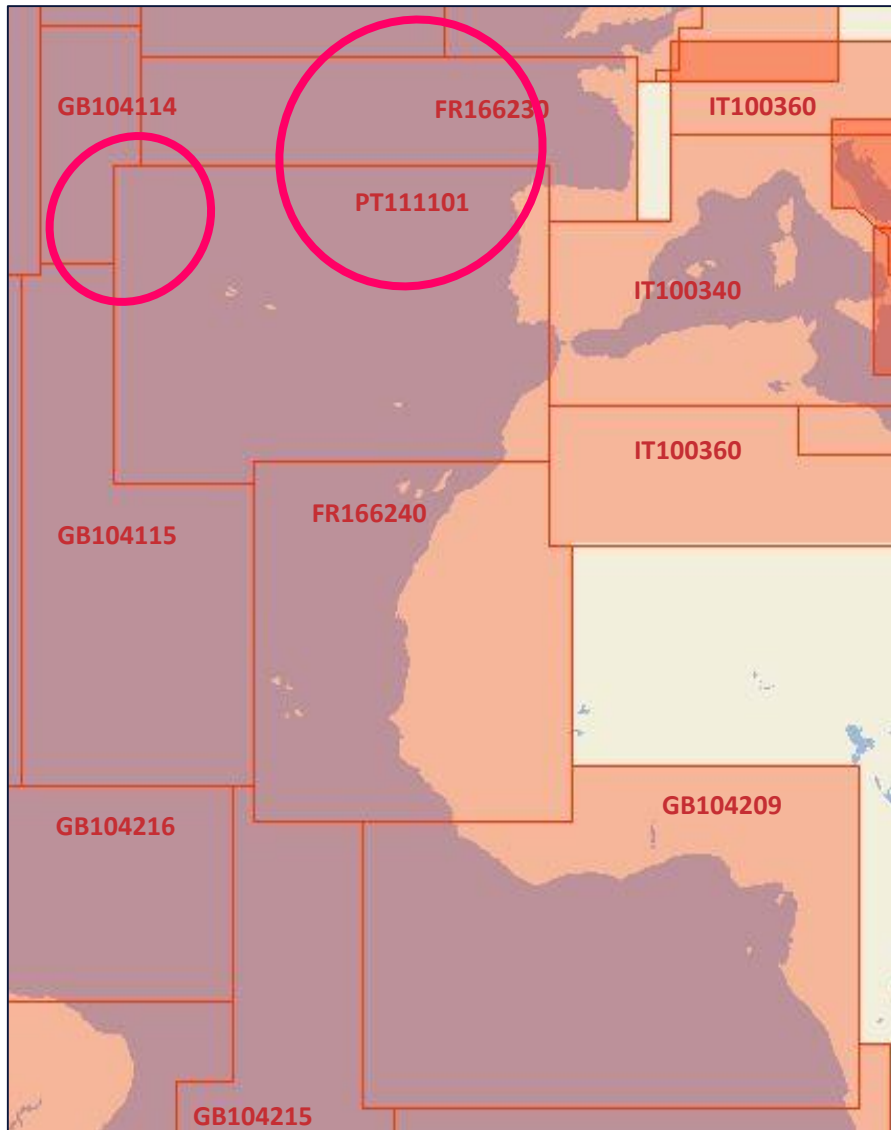
# REGION G ICC WG

## STATUS OF THE ENC SCHEME



# ENC UB 1 STATUS (OVERVIEW)

SOURCE: PRIMAR OVERLAP CHECKER



## Oct 2016:

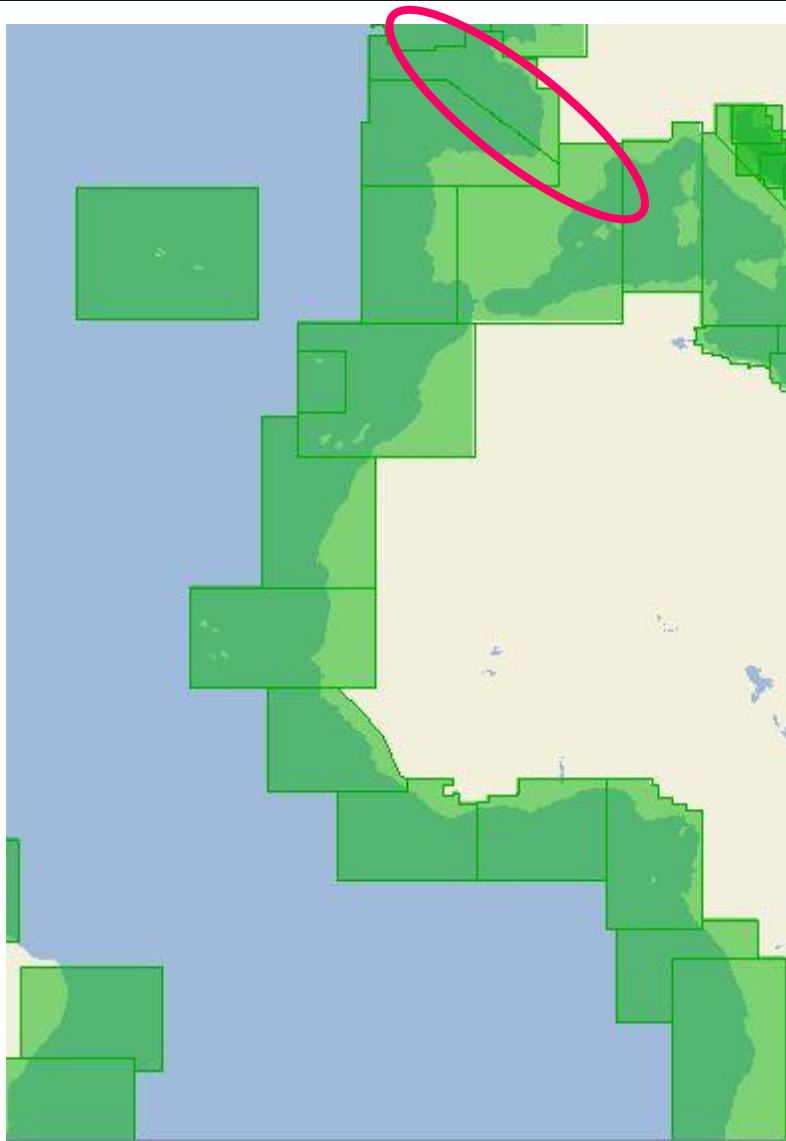
**FR/PT/RENCs dialogue to resolve an overlap between FR166230 and PT111101.**

**FR cells clipped and issued at the end of 2016 accordingly.**

**1 pending overlap between PT111101 and GB104114**

# ENC UB 2 STATUS (GENERAL)

SOURCE: PRIMAR.ORG (2017)



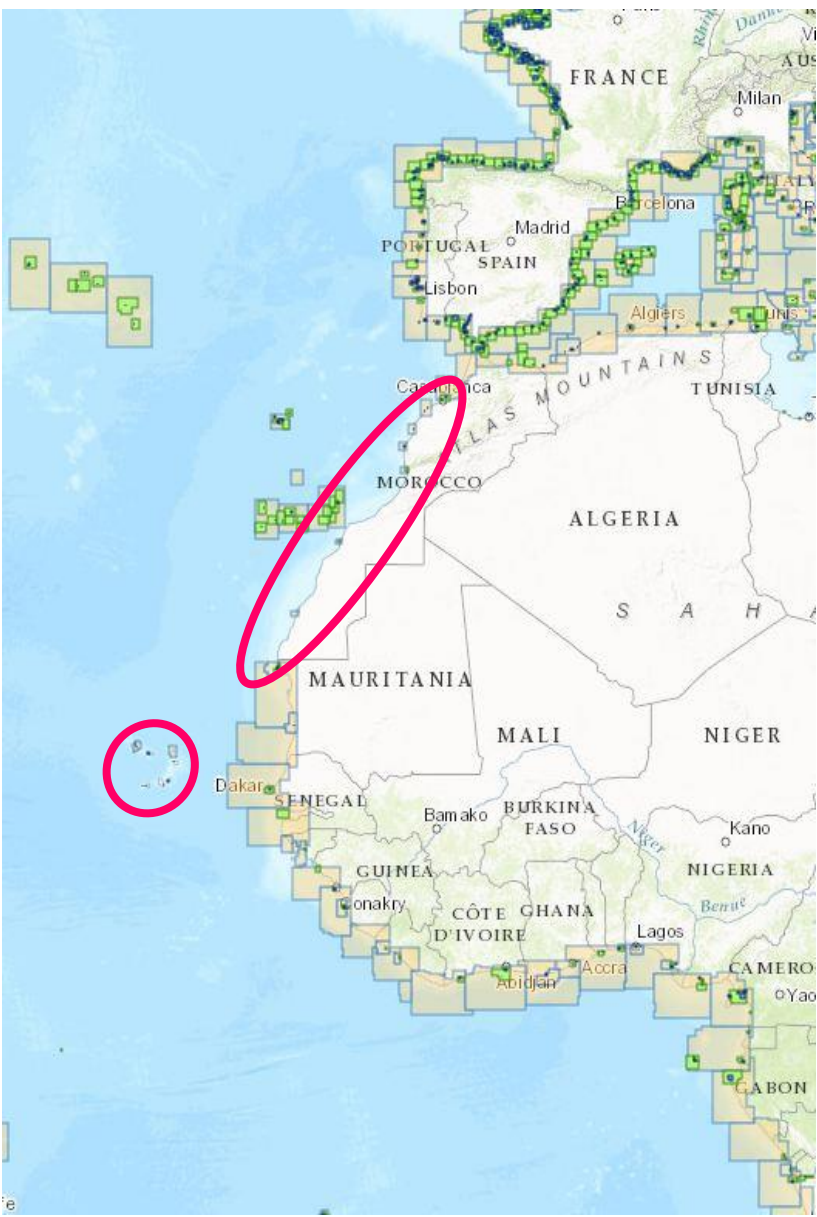
**Oct 2016:**

**FR/ES/RENCs dialogue to resolve an overlap between FR272110 and ES201080.**

**Edge matching with FR cell undertaken by ES.**

# ENC UB 3/4/5 STATUS

SOURCE: ENC ONLINE CATALOGUE (2017)



**Oct 2016:**

**Some persistent localized gaps  
in UB3/4/5/6 coverage**

# OVERLAP CHECKER 'HITS' COMPARISON



→ Based on Primar Overlap Checker 'Hits' of March 2015 and January 2017.

→ 1 'Hit' = 1 line in POC's result table

→ 'OO' = Own Overlap

Region G	2015	2017
UB1-2-3	5	2
UB4-5-6	4	0
Total	9	2
OO	4 (44%)	0

EAtHC14/11: INT & ENC Chart producers to **check** the **consistency of the existing set of ENC** with NOAA's list of cruise ship port coverage gaps and NGA's list of non-covered ports. To provide the regional charting coordinator with a set of proposals to complete large scales ENC schemes. (*Pending*)

EAtHC14/18: Regional G ICCWG to validate ENC schemes for UB1/2/3 and report back to the IHO Secretariat. (*Pending*)

**UB1 and UB2** coverage considered as **completed**.

*The 2 POC hits refers to a single edge matching overlap between PT111101 and GB104114, NW corner of the region.*

**UB3** coverage with persistent gaps over Northwest coast of Africa (MA,MR,CV).

Effort to complete **UB4/5/6** coverages based on NOAA's list of cruise ship port coverage gaps and NGA's list of non-covered ports (@EAtHC14/11).



Take note of that report.

Need for closer RENC/RCC cooperation to monitor ENC schemes :

- RENC to seek for RCC recommendations iaw WEND principles prior to new ENC release

*GE310300 released (5th EDTN) although corresponding GE11 is not an INT chart !*

- Use of INT numbers in cell names.

**Merci !**

