

WORLDWIDE ENC DATABASE WORKING GROUP (WENDWG)

Report of the representative of the EAtHC on the implementation of ENC Schemes

Laurent Louvart

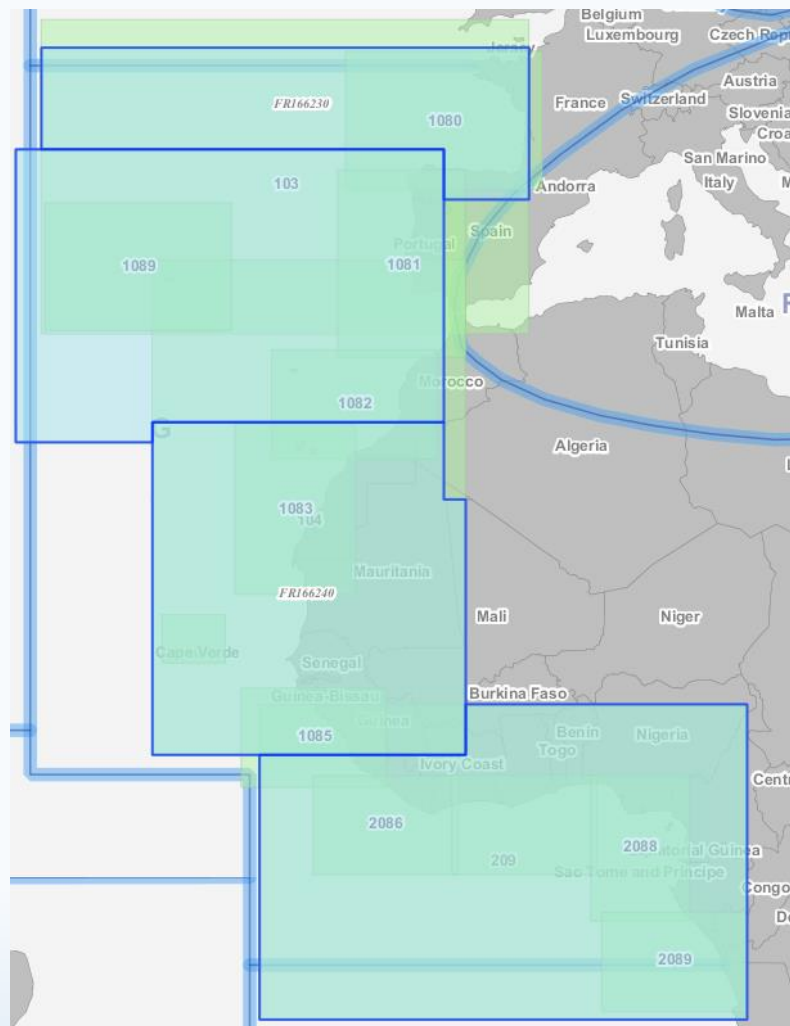
FR



Status of the ENC Scheme UB1 in the Region

- 4 ENCs

No new cell / WEND8



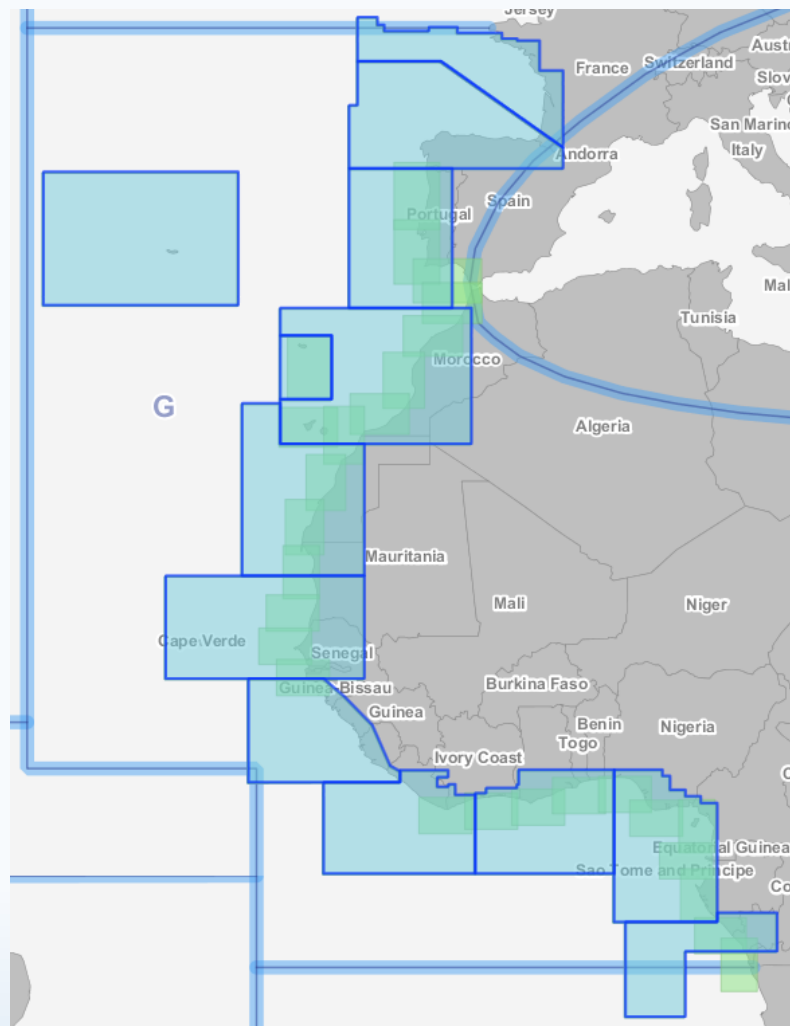
Source: IHO INTogIS II Beta (2019)



Status of the ENC Scheme UB2 in the Region

- 13 ENCs

No new cell / WEND8

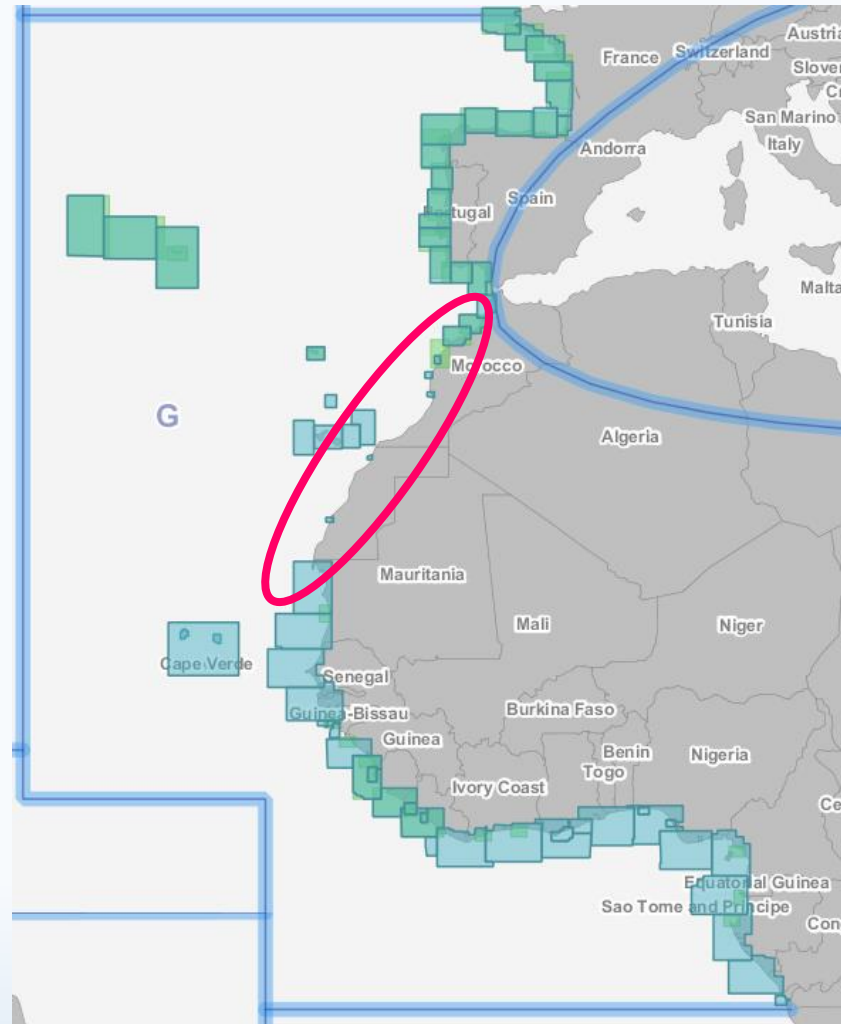


Source: IHO INToGIS II Beta (2019)



Status of the ENC Scheme UB3 in the Region

- 68 ENCs
5 new cells / WEND8
- Some persistent localized gaps



Including 2 Exclusive cells (non-RENC)

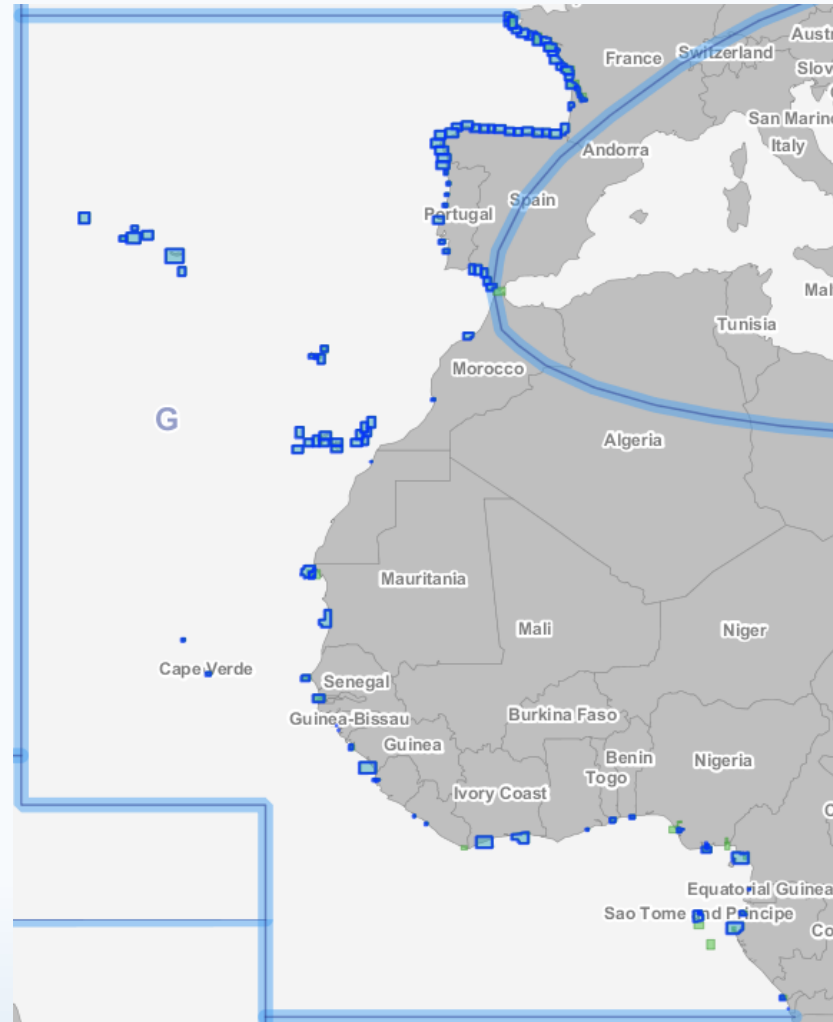


Source: IHO INToGIS II Beta (2019)



Status of the ENC Scheme UB4 in the Region

- **110 ENCs:**
 - 5 new cells / WEND8
 - 62 outside continental Europe (amongst 25 cover Azores, Canarias and Madera)
 - Only 37 covers western African continental approaches
- **Very limited availability along Western Africa coast**



Including 2
Exclusive cells
(non-RENC)



Source: IHO INTToGIS II Beta (2019)



Status of the ENC Scheme UB5 & UB6 in the Region

- **UB5: 232 ENCs**

 - 5 new cells / WEND8

 - 89 outside continental Europe (amongst 38 cover Azores, Canarias and Madera)

 - ➔ Only 51 covers western African continental harbours

- **UB6: 49 ENCs**

 - 2 new cells / WEND8

 - 14 outside continental Europe



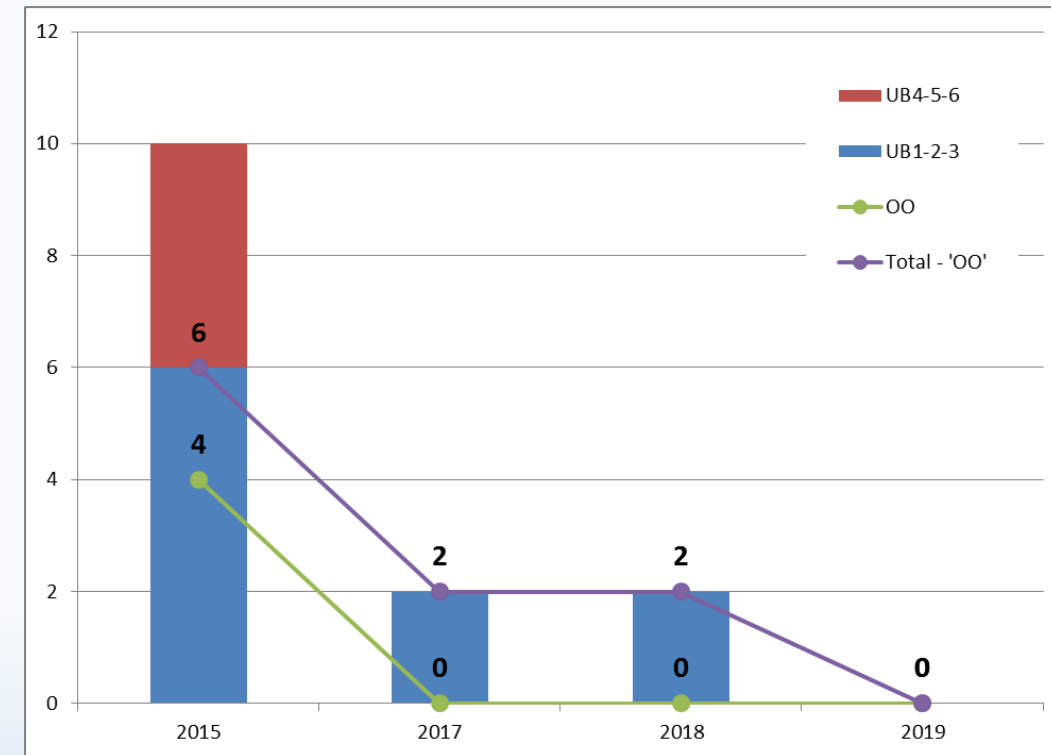
Source: IHO INTogIS II Beta (2019)



Existence of overlapping ENCs that may have an impact on safe navigation

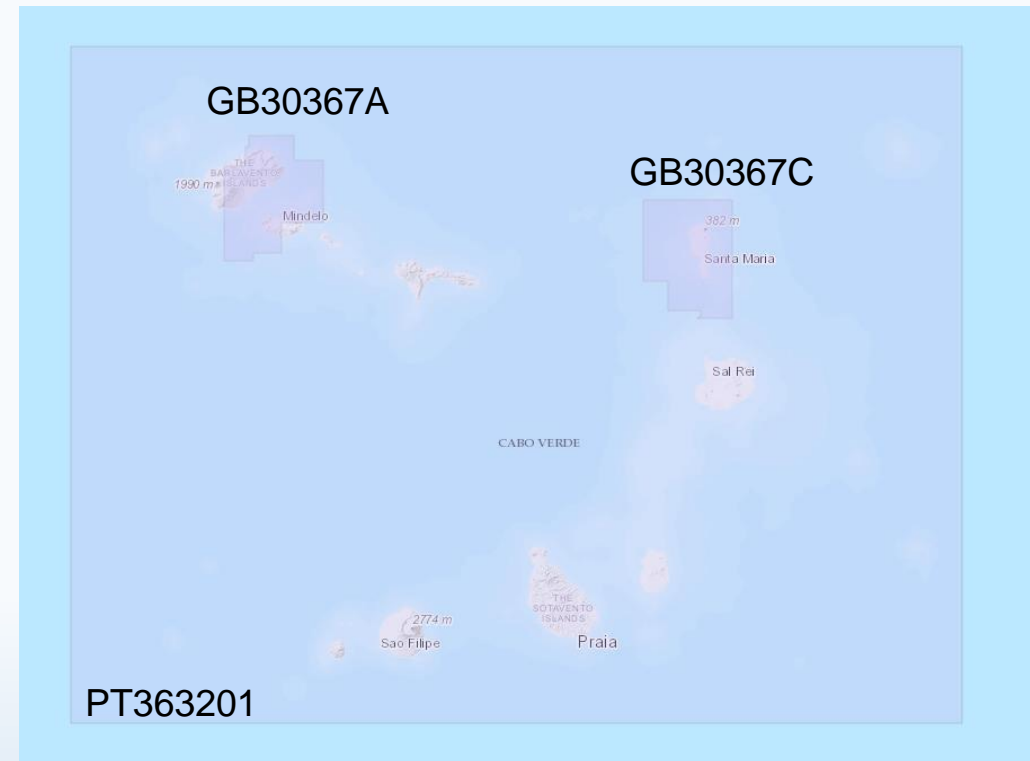
- Region F affected by very few overlaps
- Primar overlap checker 'Hits' (see Region F methodology)

| Region G | March 2015 | January 2017 | March 2018 | February 2019 |
|------------|------------|--------------|------------|---------------|
| UB1-2-3 | 6 | 2 | 2 | 0 |
| UB4-5-6 | 4 | 0 | 0 | 0 |
| Total | 10 | 2 | 2 | 0 |
| OO | 4 (40%) | 0 (0%) | 0 (0%) | 0 (0%) |
| Total - OO | 6 | 2 | 2 | 0 |



Existence of overlapping ENCs that may have an impact on safe navigation

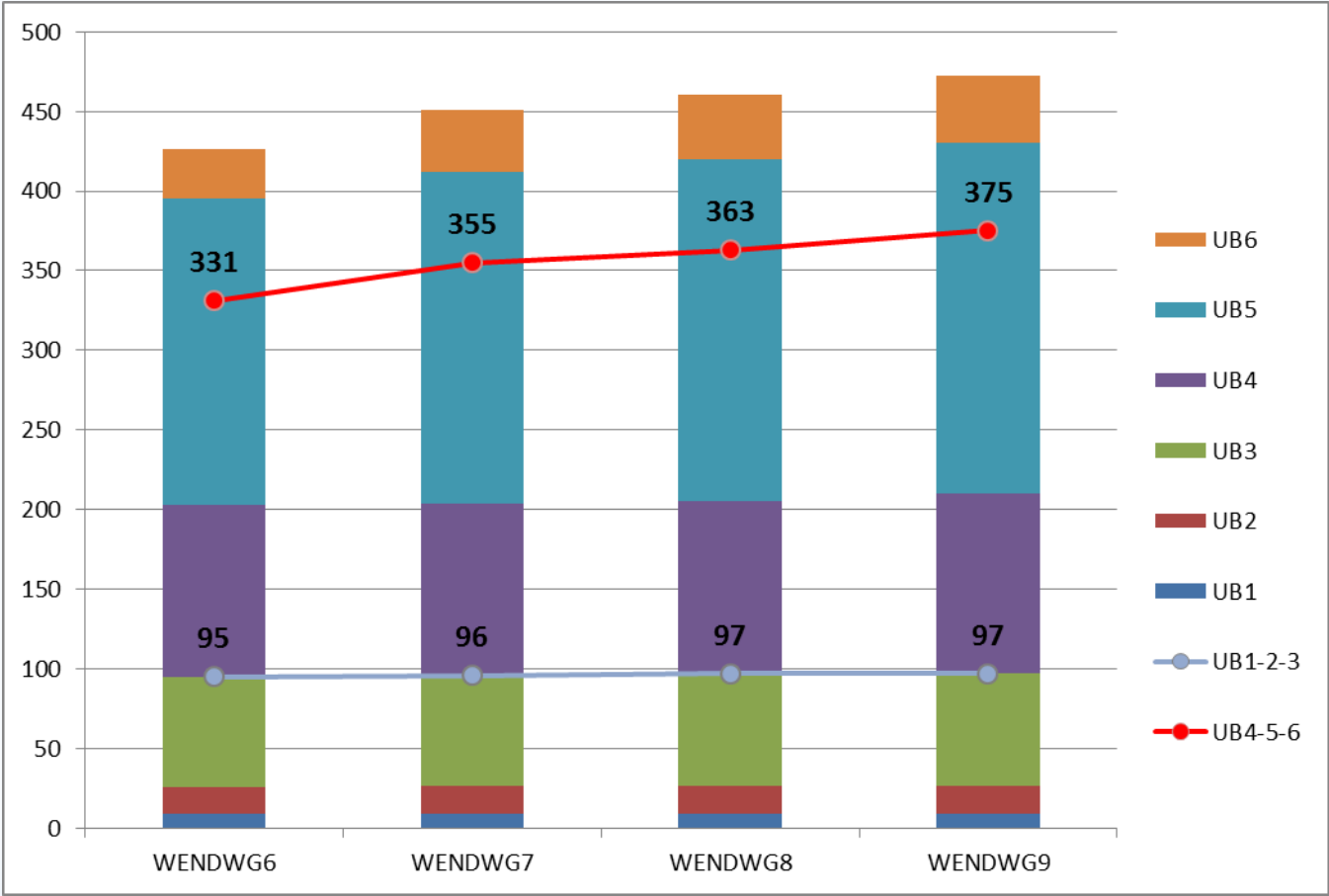
- ENC Global Coverage analysis (UKHO)
- Overlaps between PT363201 and GB30367A & GB30367C (exclusive cells)



Region G ENC Scheme

| Region G | WEND-6 | WEND-7 | WEND-8 | WEND-9 |
|--------------|------------|------------|------------|------------|
| UB1 | 9 | 9 | 9 | 9 |
| UB2 | 17 | 18 | 18 | 18 |
| UB3 | 69 | 69 | 70 | 70 |
| UB4 | 108 | 108 | 108 | 113 |
| UB5 | 192 | 208 | 215 | 220 |
| UB6 | 31 | 39 | 40 | 42 |
| Total | 426 | 451 | 460 | 472 |

- Number of UB1-2-3-4 ~ stable in the last 3 years
- UB4 ↗ 5% in the last 3 years (5% last year)
- UB5 ↗ 15% in the last 3 years (2% last year)
- UB6 ↗ 35% in the last 3 years (5% last year)



Source: WEND « Global ENC coverage »



Region G ENC Scheme

- UB1 and UB2 coverage considered as completed
- UB3 coverage with persistent gaps over Northwest coast of Africa
- UB4/5/6 : No improvement in port coverage (+2 ports)

| Port Name | Country | Port Size |
|-------------------------|---------|-----------|
| PENNINGTON OIL TERMINAL | NG | L |
| AVEIRO (new) | PT | M |
| ANTAN OIL TERMINAL | NG | S |
| OGUENDJO TERMINAL | GA | S |
| MALONGO OIL TERMINAL | AO | S |
| CABINDA (new) | AO | S |
| KENITRA | MA | S |
| ST LOUIS | SN | S |
| TAKULA TERMINAL | AO | S |

*Source: WEND « Global ENC coverage » (UKHO)
Based on NGA World Port Index (Pub 150)*



Actions requested of WENDWG/IRCC

- WENDWG is invited to note the report from EAthC

