



National Report of Iceland

This report gives a summary of the activities that has taken place within the Icelandic Coast Guard - Hydrographic Department (ICG-HD) in 2015 and 2016.

1. Hydrographic Department

The ICG-HD is moving the paper chart production from CARIS GIS to CARIS Paper Chart Composer and CARIS BASE Editor. As a part of that plan a training course was given by CARIS EMEA in Reykjavik March 2016 for the staff of the department.

One of Survey Section staff has finished 3 months' course, the CAT B, at Skilltrade in the Netherlands. One new staff member is now in training in the office.

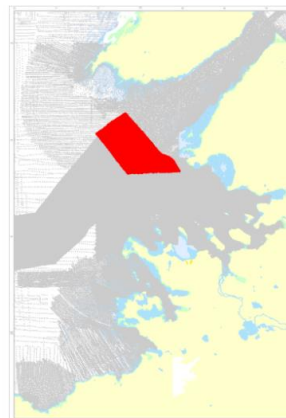
No changes have been in the organization for quiet some time and but the number of staff increased by one in the survey section to total of 8 peoples but 10 during the survey season.

2. Hydrographic Surveys in 2015

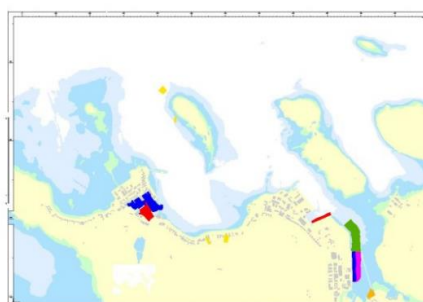
Scheduled hydrographic surveying was carried out for only 18 days in 2015. Areas surveyed were off the North-West coast of Iceland figure a, part of the entrance to Hvalfjörður, figure b, and round the south-western tip Reykjanes peninsula figure c. Additionally, some contract work for the Harbour Authorities in Reykjavík.



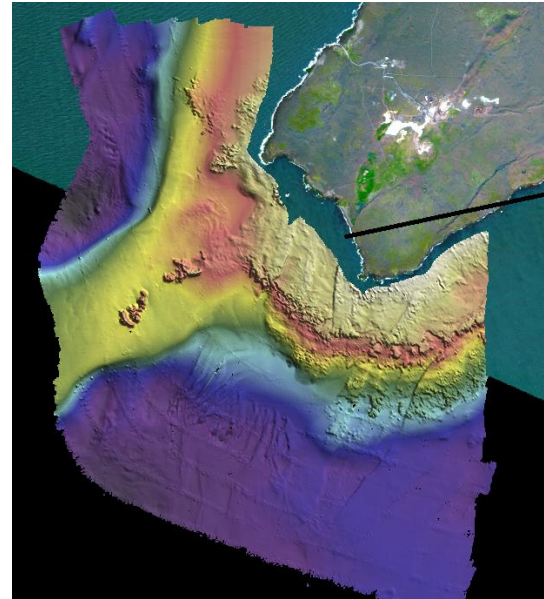
a) Off the North-West coast



b) The entrance to Hvalfjörður



d) Surveys for the Harbour Authorities in Reykjavík



c) Southwestern tip Reykjanes peninsula

3. Hydrographic Survey in 2016

This year's survey season was 72 days. Off the North - West Coast figure d) for a new chart of the area. In Eyjafjordur on the North Coast a survey was done.



Figure d) Survey area on the North West coast is within the red lines



Figure e) The area inside Eyjafjordur marked with red line



6th ARHC Meeting in Iqaluit, 3rd and 6th October 2016

On the South West Coast resurvey was done on three areas shown in red on the chart below.



4. Charts & Publications

Eleven New Editions have been published from last meeting, 8 harbour plans and 3 standard nautical charts. See the following table.

National No.	Name	Scale	Pub. month
33	Selvogur - Vestmannaeyjar	1:100 000	10/2015
515	Hólmavík	1:10000	11/2015
81	Stokksnes – Dyrhólaey INT 1102	1:300 000	12/2015
310	Vestmannaeyjar	1:10000	12/2015
365	Akranes - Hafnarfjörður	1:40 000	12/2015
313	Þorlákshöfn	1:10000	02/2016
522	Siglufjörður	1:10000	02/2016
518	Skagaströnd	1:10000	02/2016
524	Dalvík	1:10000	02/2016
516	Hvammstangi	1:10000	02/2016
613	Vopnafjörður	1:10000	09/2016



6th ARHC Meeting in Iqaluit, 3rd and 6th October 2016

5. Planned New Chart

One new chart is planned to be published early next year. Chart No. 45 Tálkni - Stigahlíð and scale 1:100 000 (see below.).

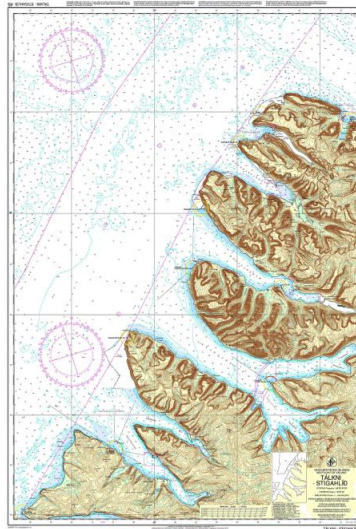
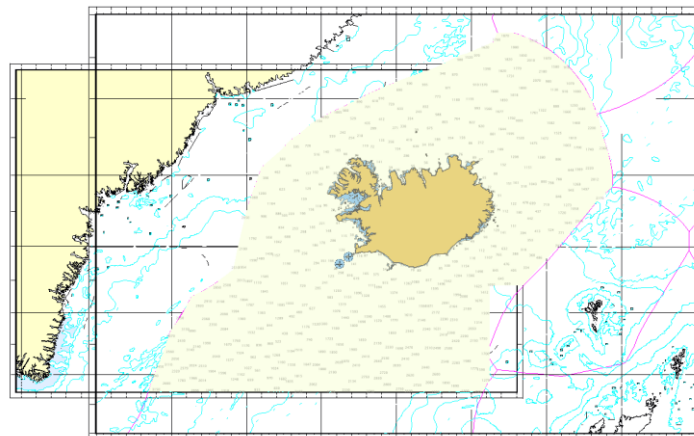


Chart No. 45 Tálkni - Stigahlíð

6 ENC production

ICG-HD took over the responsibility of publishing small scale ENC covering Icelandic waters in July 2015. UKHO did publish a Band 1 ENC of our waters. The coverage of this new cell was agreed on by Denmark, Norway, UK and Canada.



Coverage of IS100015. Background: IS10 and IS15.

Number of Icelandic ENC cells are now 71. The following table shows the number of ENCs in each Usage Band.

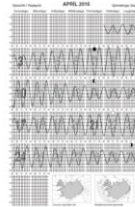
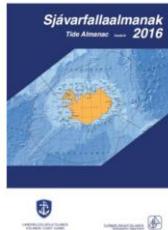
	Usage Band	Compilation scale	No of ENCs
1	Overview	1:1 500 000	1
2	General	1:700 000	1
3	Coastal	1:180 000	6
4	Approach	1:45 000	17
5	Harbour	1:8 000	46
6	Berthing		0



6th ARHC Meeting in Iqaluit, 3rd and 6th October 2016

6.1 Nautical Publications

The annual nautical publications, *Tide Tables* and *Tide Almanac*, are produced and published in the fall. About six issues of *Notices to Mariners* are published annually and sent by email and put on our website as pdf-publications also List of Lights and Catalogue of charts are available at www.lhg.is were updated.



7 Capacity Building

Iceland is not involved in any CB work.

6. C-55

There is no new information from Iceland for C-55 database

This report highlights the main activities of the Icelandic Coast Guard, Hydrographic Department.