

Maritime Administration of Latvia
Hydrographic Service
National Report to Baltic Sea Hydrographic Commission
2014

Executive summary

The Report gives an overview of the main activities of Hydrographic Service of Maritime Administration of Latvia in 2013 and 2014.

Highlights:

- Surveys on HELCOM carried out in area of 438 km² (2013) and 206 km² (2014) ;
- Improved Hydrographic survey database;
- New survey boat in May, 2014;
- All paper charts are available on HS POD service from June 10, 2014;
- Two national paper charts added to INT Chart portfolio;
- Most of HS publications are free and online;
- Increasing interest in HS ENC and Hydrographic data.

1. Hydrographic Office / Service:

Hydrographic Service (HS) is one of the Departments of the Maritime Administration of Latvia (MAL). MAL is civil organisation and is under the supervision of Ministry of Transport. To optimise resources and improve operational processes Maritime Administration of Latvia has a status of a State Stock Company.

HS consists of three divisions:

- Hydrography Division;
- Cartographic Division;
- Aids to Navigation Division.

Division of Aids to Navigation is responsible for Maritime Safety Information, NtMs, Control of Aids to Navigations in Latvian waters.

2. Surveys.

Coverage of new surveys.

Status of hydrographic data of all navigable waters, including internal waters, out to the limits of the EEZ:

	A	B	C
Depths < 200m	47.7 (May 2014)	11.1 (May 2014)	41.2 (May 2014)
Depths > 200m	0 (2014)	35 (2014)	65 (2014)

Survey coverage, where: A = percentage which is adequately surveyed; B = percentage which requires re-survey at larger scale or to modern standards; C = percentage which has never been systematically surveyed.

Hydrographic surveys.

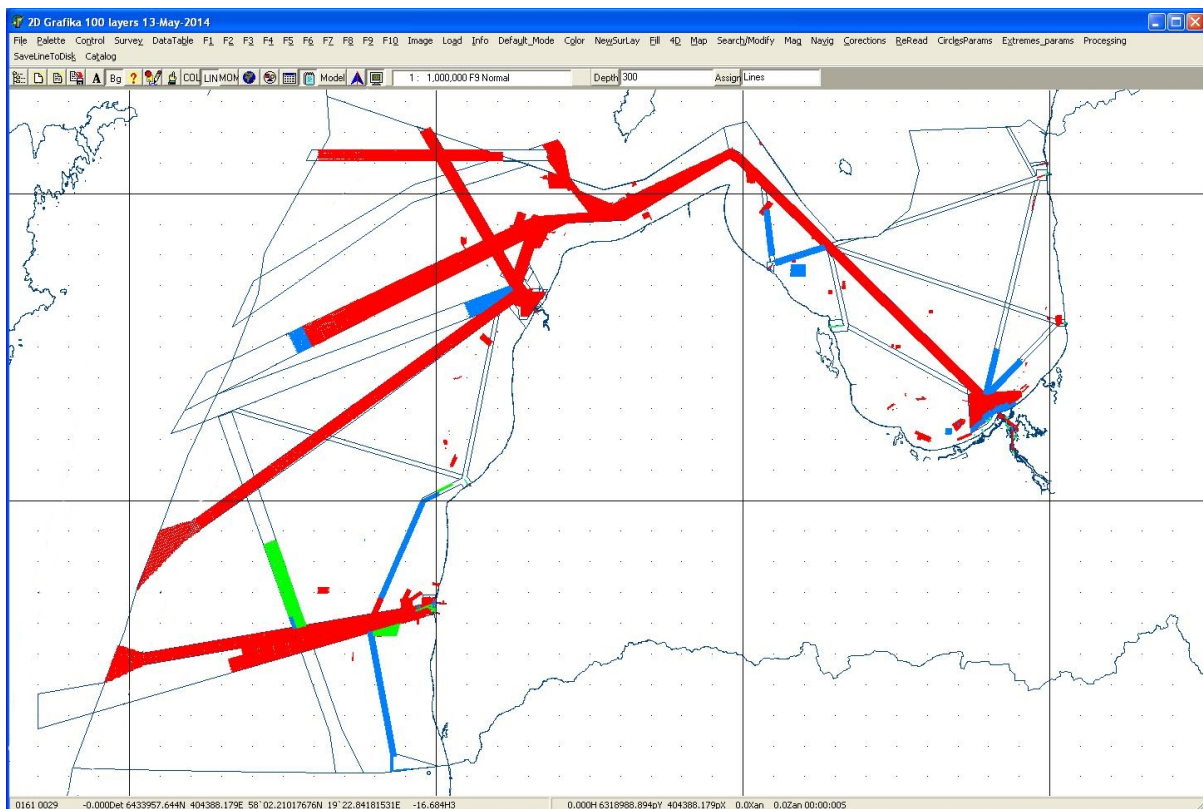
In 2013 hydrographic survey in Latvian waters was carried out as follows:

- 438 km² - on HELCOM routes in Gulf of Riga, the South Eastern, Central (Middle) Baltic (Liepaja) and Irbe strait (CAT II);
- 10 km²- harbour areas

In 2014 (May) hydrographic survey in Latvian waters was carried out as follows:

- 206 km² - on HELCOM routes in the Central (Middle) Baltic (Liepaja) (CAT II);
- 6.4 km²- Harbour areas

All surveys were carried out according the IHO S-44 standards.



Surveyed areas: 2001 to 2012- red, 2013-blue, 2014-green.

Survey vessels

The Hydrography Division (9 employees) deals with surveying (data collecting and post-processing).

For surveys the following hydrographic vessels are used:

- “Kristiāns Dāls” - 19 m twin hull survey vessel;
- “Blessor 505” – 5 m single-hull survey-boat on rivers, port and shallow coastal areas;
- New survey boat in May, 2014.

Detailed information regarding hydrographic vessels can be found in Annex 1.

3. New charts & updates.

Status of nautical charting within the limits of the EEZ:

Purpose/Scale	A	B	C
Offshore passage/Small	-	-	-
Landfall and Coastal passage/Medium	100	0	100
Approaches and Ports/Large	100	0	100
Percentage of Group A showing depths in metres	100		
Percentage of Group A referenced to a satellite datum	100		

Coverage of charts, where: A = percentage covered by INT series, or a paper chart series meeting the standards in S-4; B = percentage covered by Raster Navigational Charts (RNCs) meeting the standards in S-61; C = percentage covered by ENC's meeting the standards in S-57.

Amplifying notes: Latvia has no offshore passage / small scale charts.

Detailed information on Chart and ENC coverage can be found in Annex 2.

ENCs.

Total: 23 ENC cells in navigational purpose bands 2 to 6. ENC's are updated on a monthly basis with possible maintenance and new editions in between. Temporary (T) and preliminary (P) notices to mariners, when possible to encode, are also compiled into ENC's.

ENC distribution method.

ENC Distribution Agreements with PRIMAR (BA with Norwegian HS), Transas DataCo Ltd, Jeppesen Italia S.r.l.

ENC Derivation Agreements with Transas DataCo Ltd, Garmin LTD, Jeppesen Italia S.r.l, Bist LLC, ChartWorld, SeaPilot AB, OceanWise Ltd

RNCs.

Not produced.

INT charts.

15 of LV national charts are included in INT Series.

National paper charts.

There are 22 nautical charts, produced in accordance to international standards.

From June 10, 2014 all HS portfolio paper charts have been transferred to POD service. Chart portfolio is updated on a monthly basis, aligned with the issue of Latvian NtM publication.

Other charts.

Latest edition of collection of charts "Leisure Craft Charts. Baltic Sea, Latvia" was issued on May 2013. This edition includes Klaipeda (Lithuania) and Ruhnu (Estonia) port charts and information on services with cooperation with Lithuanian and Estonian HO. These charts are not updated with NtMs.

Problems encountered.

Nothing to report.

4. New publications & updates.

New Publications.

Publication No 3 “Symbols and Abbreviations on Latvian Navigational Charts” (INT1) in Latvian language is planned to be issued in autumn 2014.

Publication No 4 “Pilot of Baltic sea. Latvian Coast” is planned to be issued also in English in summer 2014.

Updated publications.

Updated publications No 1 “List of Aids to Navigation in the Republic of Latvia”, No 2 “Catalogue of Navigational Charts and Publications”, No 4 “Pilot of Baltic sea. Latvian Coast” (Latvian) are updated and maintained on monthly basis, available free of charge, digital online publications only. Publications are available at: www.lhd.lv and www.lja.lv.

Means of delivery.

All publication are in digital form only, except Paper Charts.

Publication "Notices to Mariners" - PDF online;

Publication No 1 "List of Aids to Navigation in the Republic of Latvia" - PDF online;

Publication No 2 “Catalogue of Navigational Charts and Publications” - PDF online;

Publication No 3 “Symbols and Abbreviations on Latvian Navigational Charts” - PDF online;

Publication No 4 "Pilot of Baltic Sea. Latvian coast" (Latvian) - PDF online.

Problems encountered.

Nothing to report.

5. MSI.

Existing infrastructure for transmission.

National GMDSS VHF network along coastline for local Navigational Warnings. Service is provided by the Maritime Rescue Coordination Centre of the Latvian Naval Flotilla Coast Guard Service (MRCC Riga) twice per day in English and Latvian.

NAVAREA I Baltic Sea Sub-Area Co-ordinator Sweden is responsible for NAVTEX Service over Latvian waters and messages are transmitted by Swedish and/or Estonian transmitters. NAVTEX messages are available at: www.navtex.lv.

Notices to Mariners are published every month, Shipping Regulations at the beginning of every calendar Year.

New infrastructure in accordance with GMDSS Master Plan.

Nothing to report.

Problems encountered.

Nothing to report

6. C-55.

IHO is informed on updates in 2014.

7. Capacity Building.

Recently HS received training for one cartographer through IHO Capacity Building, provided by UKHO. There is still need to have Cat B, Cat A and basic training for cartographers as well as hydrographic surveyors.

Shallow MBES, data processing, survey planning would be necessary.

8. Other activities.

Participation in IHO Working Groups.

HS is represented in all the working groups under BSHC.

HS is also participating in CSPCWG under the HSSC and in CBSC under the IRCC.

Meteorological data collection.

Collection of meteorological data is the responsibility of the State Ltd "Latvian Environment, Geology and Meteorology Centre".

Geospatial studies.

HS recognises the need of ENC and Hydrographic data in National and International activities other than navigation, therefore investigates the possible ways to reorganize the structure and flow of hydrographic and other marine data, the result of which to be presented in web based service.

HS is following IHO activities and also is engaged in National activities introducing INSPIRE, Marine Spatial planning, and National Geoportal.

On the web.

AtoN database and all of the nautical publications are available at: www.lhd.lv and www.lja.lv.

Nautical charts and other publications produced by MAL are available to overview and purchase at: www.lja.lv/mapshop.

New technologies and equipment.

Implemented CARIS BathyDatabase for surveys.

New ships.

New survey boat in May, 2014.

Problems encountered.

Nothing to report.

Annex 1

Detailed information regarding hydrographic vessels.

Vessel KRISTIĀNS DĀLS.



MMSI: 275027000

Call sign: YLAD

Home port: Riga, reg.Nr. 0123

Twin-hull Al 19.8x6.7x1.3; GT 33t; DWT 9t

Engine: 2x165kW IVECO, aux.: NANNI DIESEL 4.220 20 kW

Speed: 11 knots

Crew: 4

Autonomy: 3 days

Built: 2001, FINLAND UUDENKAUPUNGIN TYOVENE OY.

Nav. equipment: Furuno FRS 1000 - radar/plotter/sounder , KVH QUADRO - Compass, Furuno VHF FM 8500 - radiotelephone

Survey equipment: Reson SeaBat 7101 multibeam echosounder, Hemisphere Crescent VS110 GPS compass, Leica 530 RTK GPS, Octans EM 1000 motion sensor, SVP-15 sound velocity probe, GeoAcoustics Dual Frequency Side Scan Sonar.

Motorboat BLESSER 505 WA.



Home port: Riga; **reg.Nr.:** LV-7323

Hull: Mono - hull plastic; 5.05m x 2.40m x 0.40m

Engine: 2 x 50HP Suzuki; aux: Honda 0.9kW

Speed: 16 knots

Crew: 2+1

Autonomy: 1 day

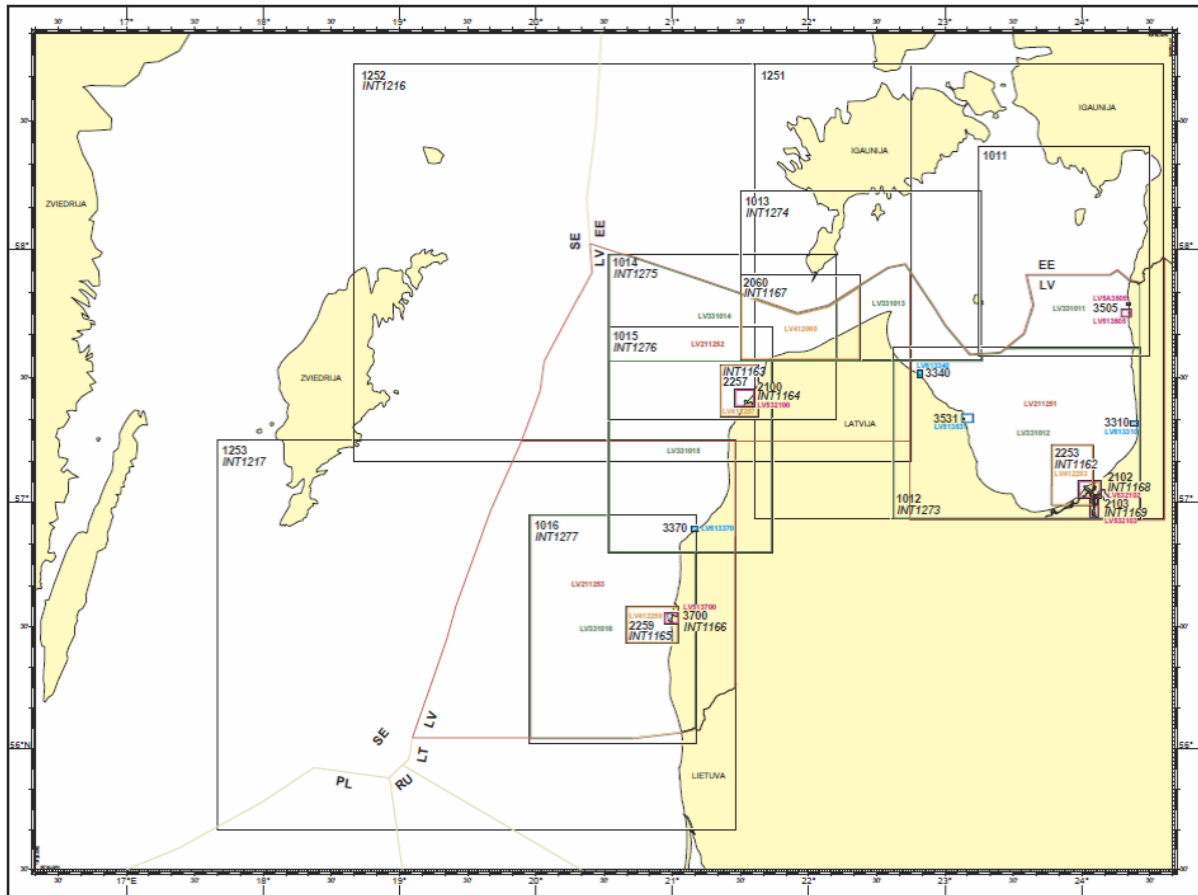
Survey equipment: Reson HYDROBAT multibeam or Deso Atlas 15 singlebeam; positioning system TRIMBLE SPS 461 or Hemisphere Crescent VS110 GPS compass; Sound velocity probe SVP-15, Marine Magnetics Explorer Mini Marine Magnetometer.

New Survey Boat.



Annex 2

Paper Chart and ENC coverage.



ENC and Paper Chart Catalogue can be found online: <http://www.lja.lv/index.php?action=739>.

Paper charts and other publications can be obtained at: <http://www.lja.lv/mapshop>.