

Maritime Administration of Latvia
Hydrographic Service
National Report to Baltic Sea Hydrographic Commission

2015

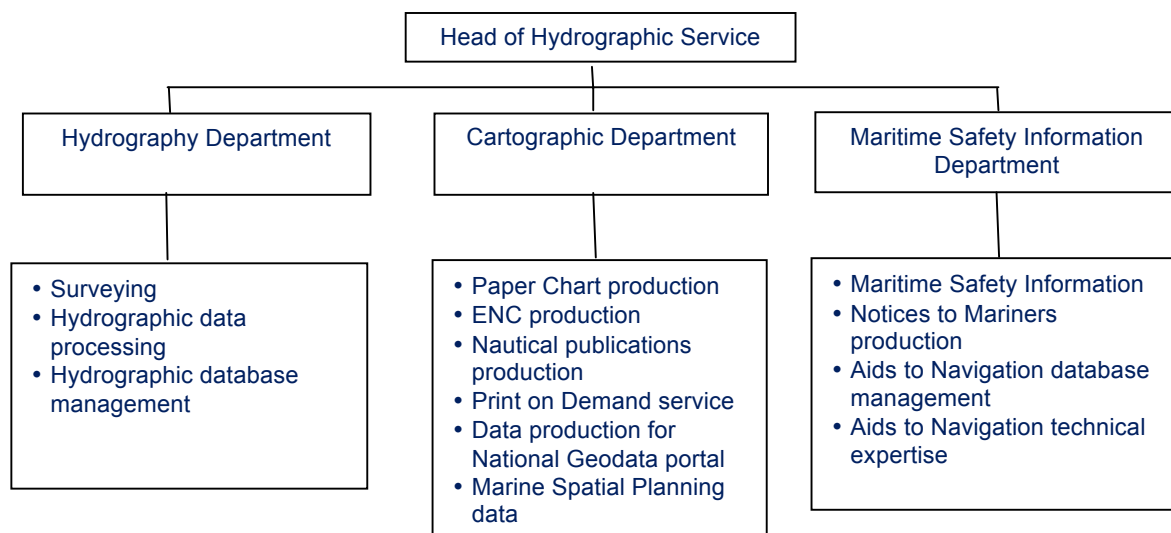
Executive summary

The Report gives an overview of the main activities of Hydrographic Service of Maritime Administration of Latvia in 2015.

1. Hydrographic Service

Hydrographic Service (HS) is one of the Departments of the Maritime Administration of Latvia (MAL). MAL is civil organisation - state stock company under the supervision of Ministry of Transport.

HS organisational structure and main functions:



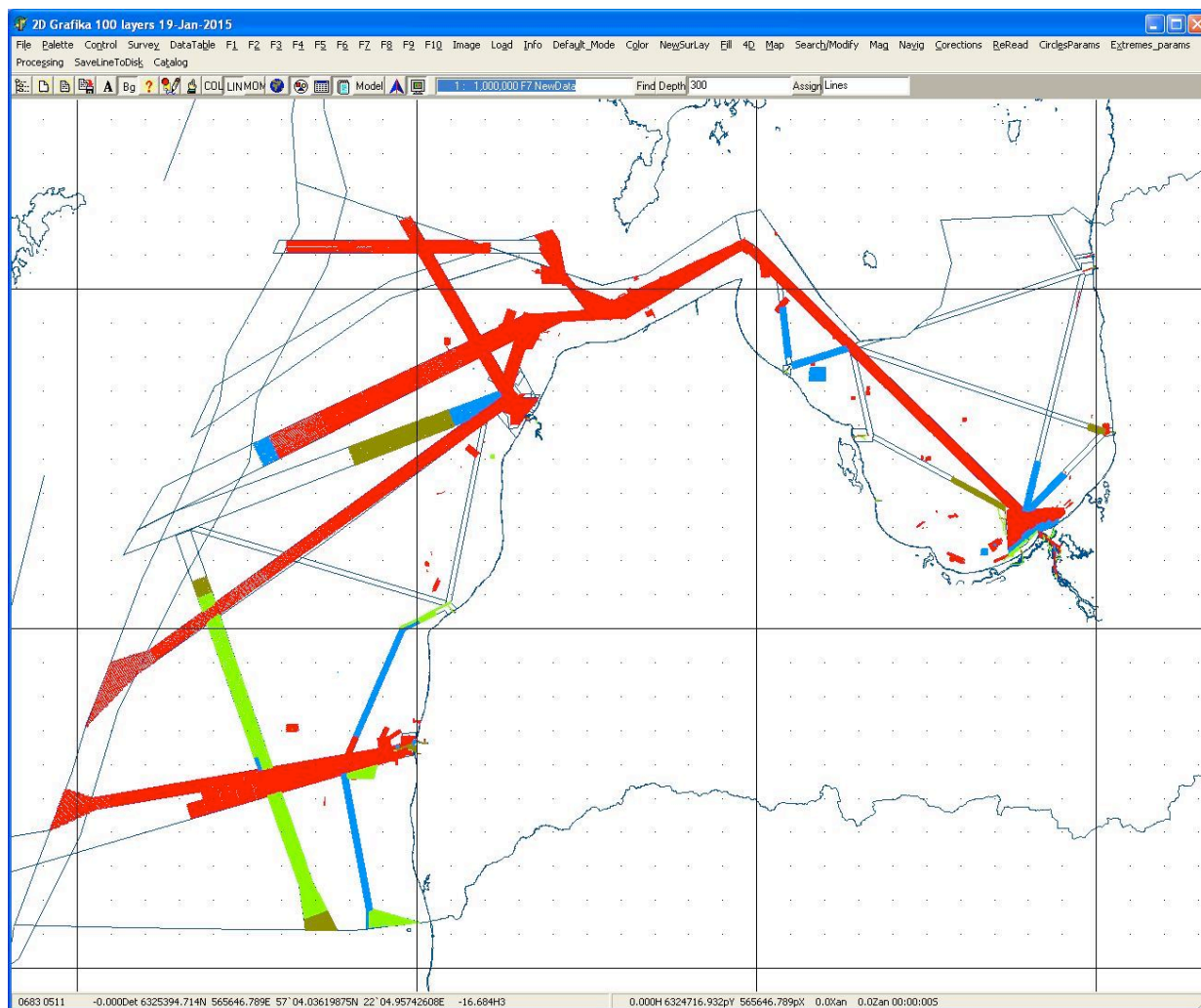
2. Hydrographic Surveys

Main surveying work in 2015 was within HELCOM Hydrographic re-Survey plan for Baltic Sea and in port areas. All surveys are carried out according the IHO S-44 standards. Surveys of HELCOM Hydrographic re-Survey plan and other surveys starting year 2002 are processed and made available for Hydrographic and Cartographic Departments via Hydrographic database.

Coverage of hydrographic surveys in 2015 (till September)

290.78 km² - on HELCOM routes in the Central (Middle) Baltic and the Gulf of Riga (CAT II);

10.68 km²- Harbour areas



Surveyed areas: 2001 to 2012- red, 2013-blue, 2014-green, 2015- dark yellow

Survey vessels

The Hydrography Division (11 employees) provide surveying, data collecting and post-processing.

Hydrographic vessels owned by MAL:

Kristiāns Dāls - 19 m twin hull survey vessel;

Blesser 505 - 5.5 m single-hull survey-boat on rivers, port and shallow coastal areas;

Sonārs - 7.25 m single-hull survey boat for port and coastal areas survey

For detailed information regarding hydrographic vessels see Annex 1.

3. New charts & updates

Paper Charts

Latvian waters are fully covered with charts of relevant navigational bands. All paper charts are produced and updated MAL Cartographic Department and incorporated in Print on Demand system.

Status of nautical charts within the limits of the EEZ:

Navigational Purpose/Scale	A Charts complying to IHO standard S-4 (Coverage in %)	B Raster navigational charts complying IHO standard S-61 (Coverage in %)	C ENCs (Coverage in %)
Offshore passage/Small*	-	-	-
Landfall and Coastal passage/Medium	100	0	100
Approaches and Ports/Large	100	0	100
Percentage of Group A showing depths in metres	100		
Percentage of Group A referenced to a satellite datum	100		

* Latvia has no offshore passage / small scale charts.

See Annex 2 for detailed information on Chart and ENC coverage.

INT charts

MAL folio contains 15 INT charts.

National charts

MAL chart folio contains 22 paper charts all of which are produced in accordance with IHO standard S-4. All paper charts are updated monthly and available in Print on Demand system. 11 new chart editions produced in 2014 - 2015, 3 new editions are in production.

ENCs

Latvia has 23 ENC cells in navigational purpose bands 2 to 6. ENCs are updated on a monthly basis in accordance with monthly Notices to Mariners, with possible maintenance and new editions in between. Temporary (T) and preliminary (P) notices to mariners are included into ENCs. In 2014 – 2015 all new paper chart editions were followed by new editions of relevant ENCs.

ENC distribution

MAL has ENC distribution agreements with PRIMAR (BA with Norwegian HS), Transas, Jeppesen Italia S.r.l. and ENC Derivation Agreements with Garmin LTD, Jeppesen Italia S.r.l, Bist LLC, ChartWorld, SeaPilot AB, OceanWise Ltd.

RNCs

RNCs are not produced by MAL.

Other charts

Collection of charts *Leisure Craft Charts. Baltic Sea, Latvia* was issued on May 2013. New edition is planned within next years. Leisure craft charts are not updated with NtMs, but HS is considering to incorporate next edition of Leisure craft charts in Notices to Mariners update system.

HS also provides production of special charts for governmental services.

4. New publications & updates

In 2014 English version of *Pilot of Baltic Sea. Latvian Coast* was published and is available on MAL website.

Publications *Notices to Mariners, List of Aids to Navigation in the Republic of Latvia, Catalogue of Navigational Charts and Publications, Pilot of Baltic Sea. Latvian Coast* are updated monthly and available for free download on MAL website.

5. MSI

Existing infrastructure for transmission.

National GMDSS VHF network along coastline for local Navigational Warnings. Service is provided by the Maritime Rescue Coordination Centre of the Latvian Naval Flotilla Coast Guard Service (MRCC Riga) twice per day in English and Latvian. Urgent Navigational Warnings are transmitted immediately on receiving them and then included in next MSI messages transmitted.

NAVAREA I Baltic Sea Sub-Area Co-ordinator - Sweden is responsible for NAVTEX Service over Latvian waters. Navigational Warnings and other messages for Latvian waters are transmitted by Swedish and/or Estonian transmitters. NAVTEX messages are available at: www.navtex.lv.

Notices to Mariners are published monthly. Each year first edition of Notices to Mariners edition is Shipping Regulations, which contains updated information regarding ports, on reporting requirements, as well as maritime safety information.

New infrastructure in accordance with GMDSS Master Plan.

Nothing to report.

6. C-55

IHO is informed on updates in 2014.

7. Capacity Building

-

8. Oceanographic activities

-

9. Other activities

INSPIRE directive

MAL takes a part according to the INSPIRE directive in the Geoportal of Latvia, that is a lane to the INSPIRE Geoportal. MAL HS provides metadata and geospatial data set in order to participate in National Geodata Portal and to meet the requirements of INSPIRE.

National Spatial Planning

MAL is participating in the Maritime Spatial Planning of Latvia waters as a developer of the graphical part, which is supervised by the Ministry of Environmental Protection and Regional Development. By basic data of MAL HS (like bathymetric data, information on aids to navigation) there are geospatial data of other institutions, what are interested in this planning project.

IHO Working Groups

MAL is participating in NCWG, BSICCWG, TEWG, BSHC.

Annex 1

Detailed information regarding hydrographic vessels.

Vessel KRISTIĀNS DĀLS.



MMSI: 275027000

Call sign: YLAD

Home port: Riga, reg.Nr. 0123

Twin-hull Al 19.8x6.7x1.3; GT 33t; DWT 9t

Engine: 2x165kW IVECO, aux.: NANNI DIESEL 4.220 20 kW

Speed: 11 knots

Crew: 4

Autonomy: 3 days

Built: 2001, FINLAND UUDENKAUPUNGIN TYOVENE OY.

Nav. equipment: Furuno FRS 1000 - radar/plotter/sounder , JLR-21 GPS Compass, Furuno VHF FM 8500 - radiotelephone

Survey equipment: Reson SeaBat 7101 multibeam echosounder, TRIMBLE GNSS SPS 855 with TRIMBLE GSM MSN 940 modem for RTK TRIMBLE VRS Now TEC corrections or Marinestar, Hemisphere Crescent VS110 GPS compass, Leica 530 RTK GPS, Octans EM 1000 motion sensor, SVP-15 sound velocity probe, GeoAcoustics Dual Frequency Side Scan Sonar.

Motorboat BLESSER 505 WA.



Home port: Riga; **reg.Nr.:** LV-7323

Mono - hull plastic; 5.05m x 2.40m x 0.40m

Engine: 2 x 50HP Suzuki; aux: Honda 0.9kW

Speed max: 16 knots

Crew: 2+1

Autonomy: 1 day

Survey equipment: Deso Atlas 15 singlebeam; Hemisphere Crescent VS110 GPS compass; Sound velocity probe SVP-15, Marine Magnetics Explorer Mini Marine Magnetometer, HYPACK software.

Survey boat SONĀRS – model Arronet 23.5 C



MMSI: 275041111

Call sign: YL2893

Home port: Riga, reg.Nr. 3100

Mono-hull Al 7.25m x 2.4m x 0.6m;

Engine: 110.3kW YAMAHA F150ATE, aux: Honda 0.9kW

Navigation equipment: FURUNO GP-32 GPS, ICOM-M323 VHF, FURUNO 1715 RADAR, SATELLITE EPIRB ACR RLB-38

Safety equipment: ARIMAR inflatable liferaft 4 pers., MARINE POOL automatic lifejackets, lifebuoys.

Speed max: 32 knots

Crew: 2+1 (max 8 pers.)

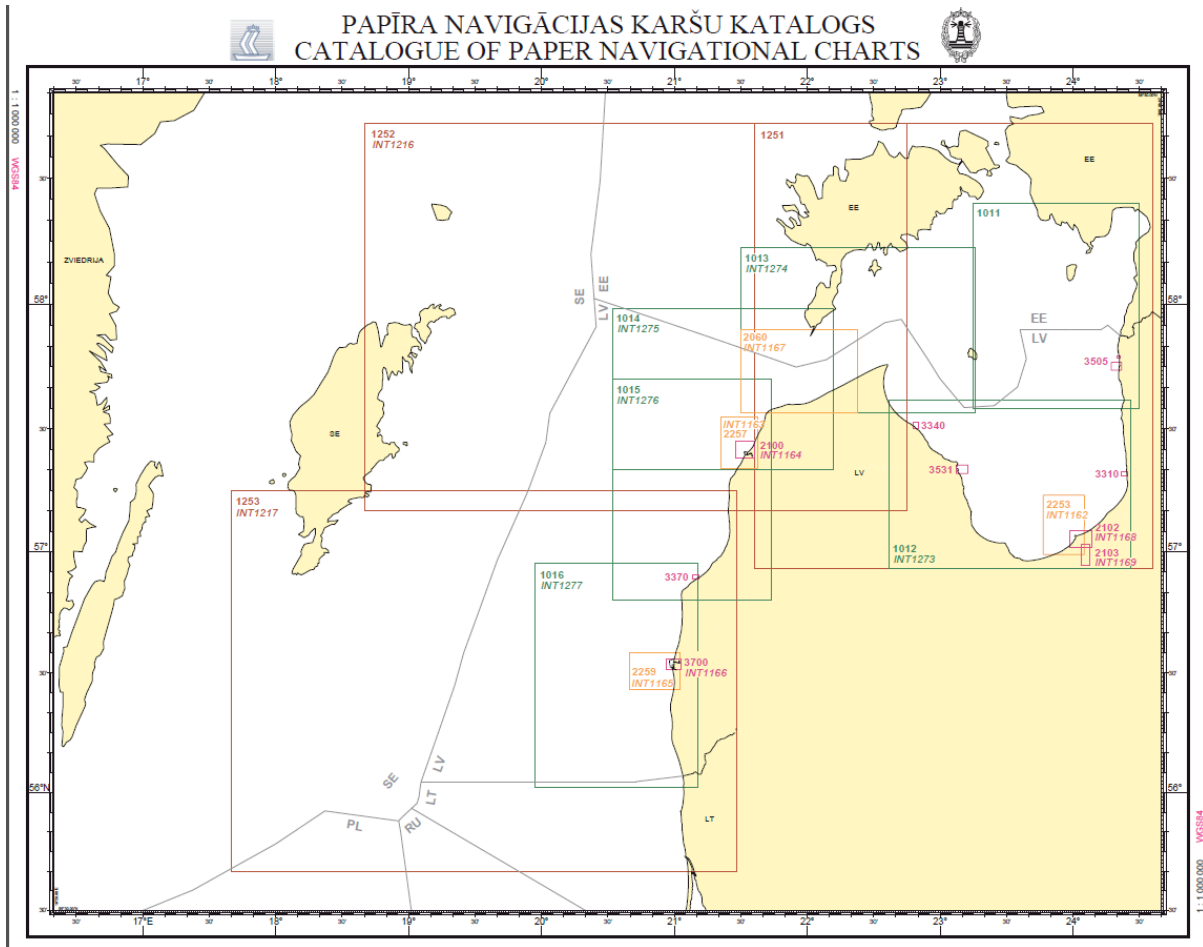
Autonomy: 1 day

Built: 2014, Arronet Teknik AB, Sweden

Survey equipment: Reson SeaBat T20-P multibeam system; positioning system TRIMBLE SPS 461 with TRIMBLE GSM MSN 940 modem for RTK TRIMBLE VRS Now TEC corrections or Marinestar; Sound velocity probe SVP-15, SVP-71; IMU SMC-108 motion sensor; Marine Magnetics Explorer Mini Marine Magnetometer; Teledyne PDS 3.9.5.2 software.

Annex 2

Paper Chart coverage.



ENC coverage.

