



Baltic Sea International Charting Coordination Working Group (BSICCWG)

BSICCWG Report to the BSHC 21st Conference

1. Background

The BSICCWG Terms of Reference and Rules of Procedure were agreed at the BSHC 15th Conference 2010. The paragraphs 2.6 and 3.10, request the BSICCWG to report annually to the BSHC at least the following issues:

- *An updated Regional INT Chart Catalogue*
- *An update of the ENC Catalogue relevant to the Region (if not undertaken by RENCs)*
- *Changes made to the scheme of INT Charts for the Region*
- *Changes made to the small / medium scale ENC scheme for the Region*
- *An updated Work Plan (if used)*
- *Status of BSEHWG Harmonisation recommendations*

2. Status of the work of BSICCWG

Mr Jarmo Mäkinen has acted as the Chair of the BSICCWG. There is no permanent secretary for the WG. *Ms Tuulia Soini* has acted as a secretary in the BSICCWG3 meeting.

The membership of the WG:

| | |
|------------------|------------------------------------|
| <i>Denmark</i> | <i>Ms Berit Holse</i> |
| <i>Denmark</i> | <i>Mr Peter Ladegaard Sørensen</i> |
| <i>Estonia</i> | <i>Ms Nele Savi</i> |
| <i>Finland</i> | <i>Mr Jarmo Mäkinen</i> |
| <i>Germany</i> | <i>Ms Sylvia Spohn</i> |
| <i>Latvia</i> | <i>Ms Linda Purina</i> |
| <i>Lithuania</i> | <i>Ms Viktoras Liulys</i> |
| <i>Poland</i> | <i>Mr Jacek Kijakowski</i> |
| <i>Russia</i> | <i>Capt Sergey Egorov</i> |
| <i>Sweden</i> | <i>Ms Anita Bodin</i> |

The BSICCWG3 meeting took place in Copenhagen, Denmark on 20-21 October 2015, and was kindly hosted by the Danish Geodata Agency. In total, 10 delegates from Estonia, Denmark, Finland, Germany, Poland and Sweden attended the meeting.

BSICCWG Circular Letters 2016

- BSICCWG Letter 1/2016 (February 22);
 - info of BSICCWG4 –meeting
 - final minutes and list of actions of BSICCWG3
 - note for gaps and overlaps analysis
 - proposal of accurate coordinates of Baltic Sea sub areas

- BSICCWG Letter 2/2016 (May 18):
 - info of INT-chart coordinators workshop
 - updating process of S-11, Region E database
 - new INT-numbers
 - note for IHO CL64/2015, monitoring of new INT charts
 - note for IHO CL89/2015, S-11 part B, on-line web based services
- A reminder to update S-11 database (July 1)



Actions from BSHC20:

Action # 12 To prepare and send out questionnaire on HO's future plans with regards to paper charts (BSICCWG)

- The exact formulation of action 12 was not in use at the BSICCWG 3 meeting. The issue was discussed, when reviewing BSHC paper chart questionnaire from the year 2015. The discussion on the BSICCWG subject focused more on how the traditional printing has been replaced / will be replaced every by POD service everywhere.
- The issue was also on the agenda of NCWG2. BSHC questionnaire was offered where necessary as background material.
- More detailed guidance is needed from the Commission.

Action # 13 To forward the first edition of new INT charts to Chair of BSICCWG for evaluation (All MS)

- See section 5.

3. BSICCWG3 meeting 20-21 October 2015, Denmark

BSICCWG3 meeting concentrated on the following work items;

- outcome of BSHC 20th Conference
- INTOGIS, S-11 Part B experimentation to database
- updating of S-11, Region E - updating process in the future
- discussion of results of paper chart questionnaire 2015 and POD
- Baltic Sea INT-Scheme (results of sub-group meeting in Rostock 2014)
- review of DE INT charts
- review of Polish INT-charts 1:150 000 and I:250 000
- review of Finnish INT charts 1:250 000
- new INT-numbers
- IHO CL64/2015 (Revised management, review and monitoring of INT charts)
- Baltic Sea ENC harmonisation
- Review and status of gaps and overlaps in Baltic Sea
- Overview ENC.
- Future work of BSICCWG

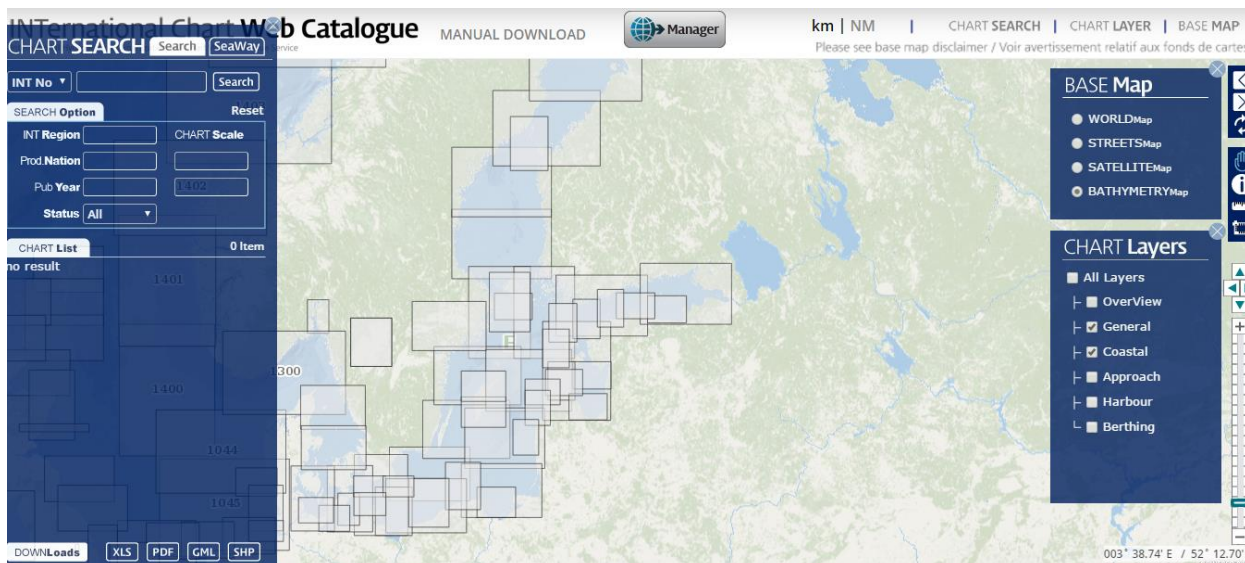
Some extracts from the actions after the meeting:

- Chair to give guidance for using Baltic Sea area names on chart titles
- all members to clarify a role of P&T notices in POD service
- member states to comment BSICCWG's Chair proposal to define more accurate coordinates for Baltic Sea sub-areas (areas approved by BSHC 2014). Some comments after Baltico meeting 2016 has also received.
- member states to make gaps and overlaps analysis according to the list of the last WENDWG and send feedback to the Chair
- DE, PL, and FI to send revised plan for possible changes in existing INT scheme
- for updating Baltic Sea overview, ENC- Member states will send their general ENC's after any new edition to Germany, who will compile and generalize updates of Baltic Sea overview ENC (and paper chart).
- member states to update the revised summary list of ENC harmonisation and send their comments of the recommendations to the Chair
- Chair to report to BSHC; New ENC related tasks for ICCWG (e.g. WENDWG6 action 06) -> need to increase ENC related skills in the WG.

Minutes and list of actions of BSICCWG3 can be found from Baltic Sea Internet domain:
www.bshc.pro



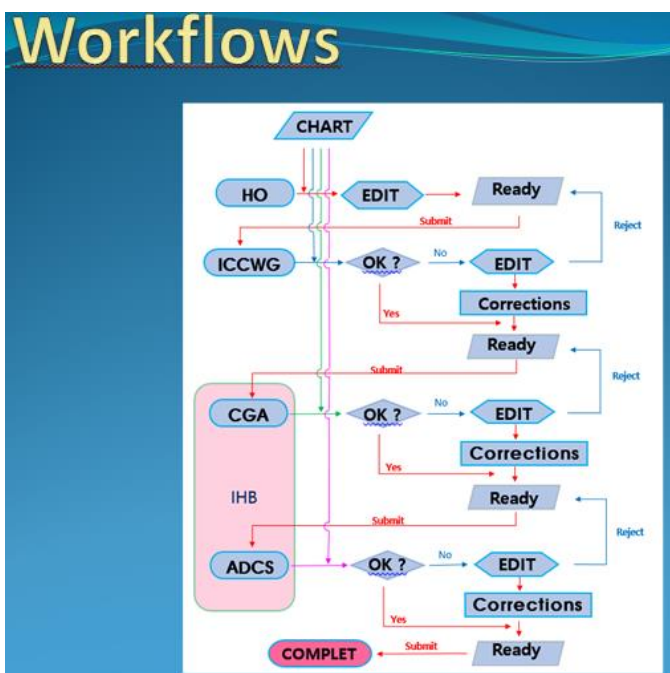
4. INT Chart Web Catalogue and INT Chart Web Manager Services. Updating S-11 Part B Region E



After experimentation phase (2014-15) and transition phase (Spring 2016), new INT Chart Web Catalogue and the associated INT Chart on-line Web Manager services Web based services are now in use (www.iho.int > Standards&Publications > S-11 > Part B)
Link: <http://chart.iho.int:8080/iho/main.do>

INT chart Producer and Printer Nations and INT Chart Coordinators/ICCWGs are now expected to maintain regional databases using INTOGIS. The IHB supervise the management of the regional databases.

Almost all the Baltic Sea member states have started to update their charts in Region E. The rules of updating procedure is as follows: HO-> Chart coordinator-> IHB. The existing database version of Region E is 3.0.7 – Aug 2016.





Development Phase II

A development phase II of the INTOGIS is currently under consideration between KHOA and the IHB.

If this phase II is approved, the extensions and development that could be expected from January 2017 are planned to be:

- ENC Scheming Management (in accordance with the new Edition of S-11 Part A – *in preparation* -)
- ENC Gap Finder (comparison between ENC coverage and INT Chart coverage, AIS shipping tracks and moorings, ports, etc.)
- export/import functions between INTOGIS II and the IHO ENC Catalogue
- statistics tools
- polar projections (Arctic & Antarctic) and GEBCO base maps
- additional layers (world ports, AIS, users' layers)
- user manuals updates, and web-based services

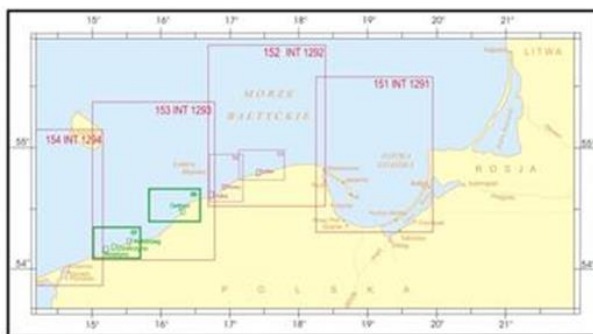
5. New INT charts/-numbers

Poland:

New INT-numbers (INT1340 and INT1341) have been reserved for the Polish Approach Charts in scale 1:50 000.

| | | | | | | |
|----------|------|----|----|--------|-----------------|-------------------------------|
| RESERVED | 1340 | PL | 56 | 50 000 | Southern Baltic | Approach to Darlowo harbour |
| RESERVED | 1341 | PL | 57 | 50 000 | Southern Baltic | Approach to Kolobrzeg Harbour |

| Chart No | INT No | Chart title | Scale Φ0 | Co-ordinates | BSICCWG | Planned implementation deadline |
|----------|--------|--|--------------------|--|-------------------------|---------------------------------|
| 56 | | Southern Baltic. Approach to Darlowo Harbour | 1:50 000 54°30' | 54°21,0'N 15°54,5'E 54°36,5'N 16°33,0'E | BSCCWG3 2015 October | 2016 |
| 57 | | Southern Baltic. Approach to Kolobrzeg Harbour | 1:50 000 54°30' | 54°05,6'N 15°03,5'E 54°21,8'N 15°42,0'E | BSCCWG3 2015 October | 2016 |



Estonia:

Estonian Chart EE 890 (Mõntu Harbour 1:2 000). New number is INT 1798. Due to some misunderstanding INT1313 was used for this chart. Number INT 1313 belongs to Region D, SE 937 (Idefjorden).

Finland:

Finland will produce INT 1210 (1:250 000) according to the original INT scheme and withdraw the proposal discussed in BSICCWG3. INT 1210 (FI 954) will be published in 2017.



New 5-digit INT-numbers have been reserved for 11 new Finnish harbour INT Charts in scales 1:10 000- 1:25 000. Previously, these harbour charts were printed on the reverse side of the approach INT charts. The first four digits refers to the Approach Chart from the same area. Reference: S-4, A-204.2.

3. In the event of 4 digits not providing sufficient INT numbers for a region, a 5th digit may be added at the unit end of the existing allocated 4 digit numbers. Alphabetical prefixes or suffixes should not be used.

| | | |
|-----|-------|---|
| 101 | 12461 | Haapasaari, Saukko & Orregrund, 1:20 000 / 1:25 000 |
| 103 | 12491 | Valko, Pellinki, Kilpilahti & Kalkkiranta Valkom, Pellinge, Sköldvik & Kalkstrand, 1:20 000 |
| 105 | 11881 | Lövsjär, Askgrund & Parainen Lövsjär, Askgrund & Pargas, 1:25 000 |
| 109 | 11921 | Kumlinge, Lappo, Jurmo, Vuosnainen & Lypyrntti Kumlinge, Lappo, Jurmo, Osnäs & Lypertö, 1:20 000 |
| 113 | 11351 | Merikarvia, Kristiinankaupunki & Kaskinen Sastmola, Kristinestad & Kaskö, 1:20 000 / 1:25 000 |
| 115 | 11391 | Veckargrund, Nygrund, Vaasa & Raippaluoto Veckargrund, Nygrund, Vasa & Replot, 1:20 000 |
| 117 | 11431 | Ykspihlaja & Rahja, Yxpila & Rahja, 1:20 000 |
| 119 | 11461 | Raahe & Oulu, Brahestad & Uleåborg, 1:20 000/ 1:10 000 |
| 127 | 11321 | Rauma, Raumo, 1:20 000/1:10 000 |
| 132 | 12511 | Porkkala - Kantvik, Porkkala - Kantvik, 1:25 000 |
| 167 | 11901 | Utö, 1:20 000 |

6. Revised management, Review and Monitoring of new INT Charts

Ref.; IHO CL 64/2015; two-year trial procedure for the review of new INT charts.

c. **All INT Chart Producer Nations** to provide first editions and new editions of INT charts to the relevant Regional INT Chart Coordinator (or ICCWG) three months prior to every RHC meeting to enable the Regional INT Chart Coordinator (or ICCWG) to validate the current INT chart scheme;

Action from BSHC 20:

Action # 13 To forward the first edition of new INT charts to chair of BSICCWG for evaluation (All MS)

Many of the member states have provided a printed copy or raster via ftp-service.

Basic check-list for INT Chart Coordinators when reviewing new INT charts have been provided by 8th August 2016 (action from NCWG2). Monitoring work has started. Results will be analysed and discussed in next BSICCWG-meeting.

All INT chart coordinators are requested to provide feedback to IHB, on the experimentation of this "basic" check-list by 31 March 2017.

7. INT chart coordinators workshop

A workshop for all Regional INT Chart/ENC Coordinators took place on 25 April, and was held back-to-back with the 2nd meeting of the NCWG at the IHB in Monaco. The meeting agenda included:



- Identification and review of the IHO documentation to be used by Coordinators – Role and Responsibilities
- Best practices, issues, examples, discussion (Self-assessment reports (INT Chart/ENC Coordinator)
- Identification and review of available tools and catalogues
- Identification and review of the new INT Chart Web Catalogue and INT Chart Web Manager Services
- In preparation of the future: ENC's & INT Charts, Recommendations

Link to the workshop material:

https://www.iho.int/mtg_docs/com_wg/NCWG/NCWG2/Workshop/Workshop_NCWG2_docs.htm

8. ENC harmonisation

The study of the gaps and overlaps in the Baltic Sea, according to the WENDWG report and with different tools, (e.g. Primar overlap checker) is an ongoing effort. It has been noted, that the gaps and overlaps analysis can have different results depending on the analysis tool.

Most of the Baltic Sea ENC harmonization recommendations are implemented or in process to be implemented by the member states. After the last BSICCWG meeting, member states were tasked to update the revised summary list of ENC harmonisation and send their comments on the recommendations to the Chair. See annex 1.

The meeting participants discussed the need for having an ENC specialists present at the next BSICCWG4 meeting when ENC harmonisation issues are handled or have a special meeting for ENC-issues.

9. Future work of BSICCWG

The future work of BSICCWG will include, among others:

- Testing INTOGIS tools
- Updating s-11 part B via INTOGIS tools
- Review and Monitoring of new INT Charts/ Testing of Check list provided by IHB
- Reviewing of ENC harmonization recommendations
- Reporting on how to solve overlaps
- Scheming issues
- New ENC related tasks for ICCWGs (e.g. WENDWG6 action 06) -> need to increase ENC related skills in the WG.

10. Next BSICCWG-meeting

The next BSICCWG –meeting will be held in Tallinn, Estonia on 30 NOV-1 DEC 2016.

11. Actions for the BSHC 21th Conference

- Note this report
- Give further guidance to WG on BSHC20 action 12
- Give guidance for recourses of ENC related tasks (item 7)

Annexes:

1. Status of Baltic Sea ENC Harmonisation recommendations.

 Status of Baltic Sea ENC harmonisation recommendations

Explanation of the status classes

| Status | Meaning | Example |
|--------------------------|---|---|
| <i>Completed</i> | Recommendation completed. No actions to BSHC members. No need to follow up any more. [Previously noted as "Completed", "Done", "Adopted"?] | Recommendation #14 has been completely done. Recommendation may be deleted in the Summary Table. |
| <i>Adopted</i> | Recommendation included in the ENC production process. [Previously noted as "Done", "Adopted"?] | Rec. #9: before releasing new cells or editions to check that there are no gaps or overlaps (over 5 m buffer) |
| <i>Partially Adopted</i> | Recommendation included partially in the ENC production process (e.g. for some scale ranges or some products). [Previously noted as "On-going"?] | Rec #3 implemented only for some scale ranges. |
| <i>Not applicable</i> | Recommendation not relevant to a MS or for the time being. | Rec #10 may be valid e.g. when S-101 is introduced into use |
| <i>Unclear</i> | No information available or information not clear. | No or unclear status information received from a MS. |

Revised Draft Summary Table (based on the classification above)

| Rec. # | Recommendation | Denmark | Estonia | Finland | Germany | Latvia | Lithuania | Poland | Russia | Sweden |
|--------|--|---------|---------|---------|---------|--------|-----------|--------|--------|--------|
| #1 | 1a) Overview navigational purpose should be in harmony with other navigational purposes within the producers' portfolios. 1b) The Overview cell should be harmonised with adjacent cells in the North Sea. | | | | | | | | | |
| #2 | The Harbour and Berthing navigational purposes should be in harmony with other navigational purposes within the producers' portfolios | | | | | | | | | |
| #3 | On the Baltic Sea, the following values for the compilation scales should be used: General - 180,000; Coastal - 90,000; Approach - 22,000. | | | | | | | | | |
| #4 | If a Hydrographic Office (HO) wants to use a compilation scale other than those recommended above, it may do so if all the following conditions are met: i) the value used is in line with the intention of the IHO CL 47/2004 ii) use of it is agreed bilaterally with neighbouring HO(s) concerned, in order to avoid inconsistencies at the border, and iii) every effort is made to minimise possible inconsistencies due to deviations from the recommended compilation scale. | | | | | | | | | |
| #5 | BSHC should adopt the guidelines as stated in the Annex J. | | | | | | | | | |
| #6 | 6a) The BSEHWG proposes that the BSHC establishes a Working Group to study possibilities for Harmonisation of the Conveying and Presentation of Depth Information for both ENCs and paper charts. 6b) Meanwhile, if the IHO recommended contour intervals are not applicable, or if additional intervals | | | | | | | | | |

| Rec. # | Recommendation | Denmark | Estonia | Finland | Germany | Latvia | Lithuania | Poland | Russia | Sweden |
|--------|---|---------|---------|---------|---------|--------|-----------|--------|--------|--------|
| | are needed, implementation should be agreed bilaterally/multilaterally so that possible inconsistencies to the mariners could be avoided. | | | | | | | | | |
| #7 | All BSHC countries should ensure that bilateral agreements are in place with their neighbouring countries concerning harmonisation of features continuing/extending over national borders. | | | | | | | | | |
| #8 | All BSHC countries should check and carry out harmonisation before launching updates or new editions of ENC. | | | | | | | | | |
| #9 | All BSHC countries should check that there are no gaps between cells at national borders by establishing a buffer zone of up to 5 metres, if necessary. | | | | | | | | | |
| #10 | The BSHC should agree on joint plans and time schedules for the adoption of new versions of ENC related standards (e.g. S-57 Ed. 3.1.1 or S-101). | | | | | | | | | |
| #11 | The BSHC should agree on joint plans and a time schedule for the adoption of new object classes on their products. | | | | | | | | | |
| #12 | 12a) BSHC should encourage all countries to make further studies of the use of objects in the Baltic Sea ENCs and report to the following BSHC meeting. 12b) BSHC should decide on proper actions to ensure ENC consistency as far as possible. | | | | | | | | | |
| #13 | If found necessary it is possible to deviate from the recommendations. When doing so, the relevant HO should make every effort to minimise the effect of any inconsistencies that may occur. This should be done through bilateral/multilateral agreements and through harmonisation of data in order to ensure that no serious disharmony is introduced to the ENCs. | | | | | | | | | |
| #14 | BSHC should ask the IHO Committee on | | | | | | | | | |

| Rec. # | Recommendation | Denmark | Estonia | Finland | Germany | Latvia | Lithuania | Poland | Russia | Sweden |
|--------|--|---------|---------|---------|---------|--------|-----------|--------|--------|--------|
| | Hydrographic Requirements for Information Systems (CHRIS) to consider appropriate actions to recommend other Regional Hydrographic Commissions (RHCs) to adopt regional implementations to IHO consistency recommendations within their sea areas. | | | | | | | | | |
| #15 | All relevant bodies are encouraged to continue the education of mariners regarding 'ECDIS', 'ECS', 'ENC' and 'Electronic chart'. | | | | | | | | | |
| #16 | All BSHC countries should follow the time schedule for the implementation of all relevant recommendations as stated in Annex L. | | | | | | | | | |
| #17 | Reporting of the implementation of the recommendations | | | | | | | | | |