

## **Allocation of future IHO Council seats to BSHC member states**

### References:

- A. IHO Circular Letter 28/2016 dated 7 June – Progress on the Approval of the Protocol of Amendments to the Convention on the IHO

The progress reported for the approval of the Protocol of Amendments to the Convention on the IHO at Reference A indicates that the Protocol will enter into force before the end of 2016. Due to the new General Regulations, the Council will be established as a new important organ during the first Assembly with the expectation to assemble in autumn 2017 for the first time. It is now up to the BSHC to set up its procedures for the selection process of the respective representatives to the Council as various RHC did already.

Germany proposes to adopt the selection procedures endorsed by the North Sea Hydrographic Commission at its recent meeting in Dublin in June 2016. A flow diagram and the full text of the proposed new Annex to the BSHC statutes are annexed to the EN.

### **The Commission is invited to**

- discuss the proposed adoption of the NSHC procedures;
- consider possible alternatives if the NSHC template does not enjoy sufficient support;
- make a final decision about the procedures to be applied to designation of Council seats as soon as the status of approval of the Protocol of Amendments to the Convention on the IHO requires this.

## **PROCEDURE FOR THE SELECTION OF MEMBER STATES BY THE NSHC FOR THE IHO COUNCIL**

Selection of Member States by the NSHC for the IHO Council shall be determined in compliance with IHO General Regulations Articles 2 and 16.

### **Role and Authority of Member States selected by the NSHC for the Council**

1. IHO Member States selected by the NSHC, shall occupy their seat on the Council for all sessions of the Council throughout the inter-sessional period between Assemblies.
2. All expenses connected with the participation of Member States selected for the Council shall be defrayed by their respective State, in accordance with IHO General Regulation Article 3.
3. In carrying out their role as a Member State selected by the NSHC for the Council, the selected Member States shall take into account the views of the Commission.

### **Selection Procedure (see also flowchart Appendix 1)**

4. Three months before an ordinary session of the Assembly, the Secretary-General shall inform the Chair of the NSHC of:
  - a. the number of seats allocated to the NSHC, and
  - b. those Member States that are eligible for selection by the NSHC.
5. If the number of Member States eligible for selection by the NSHC for the Council is equal to the number of seats on the Council assigned to the NSHC by the Secretary-General under the terms of clause 4 above, then the aforementioned eligible Member States will be selected by the NSHC.
6. If the number of Member States eligible for selection by the NSHC for the Council is greater than the number of seats assigned to the NSHC by the IHO Secretary-General under the terms of clause 4 above, then the Chair of the NSHC will invite those Member States that have been designated as eligible for selection to the Council to indicate if they wish to be considered as candidates for selection.
  - a. If the number of candidate Member States is equal to the number of seats on the Council assigned to the NSHC, then these candidate(s) will be selected by the NSHC.
  - b. If the number of candidate Member States is smaller than the number of seats on the council assigned to the NSHC, the candidate(s), if any, will be automatically designated and will be complemented by the eligible Member State(s) that have not been selected by the NSHC for the Council for the longest time. If this proves inconclusive, the Chair will designate eligible Members State(s) as selected by the NSHC.
  - c. If the number of candidate Member States is greater than the number of seats on the Council assigned to the NSHC, the candidate(s) to be selected by the NSHC for the Council will be designated through a voting procedure.

### **Voting Procedure**

7. The voting procedure will take place in the three months prior to the Assembly, preferably at a Conference of the NSHC otherwise by correspondence if no NSHC Conference is scheduled.

- a. Each Member State may submit one voting paper marking as many candidate Member States from the list as seats have been assigned to the NSHC (see example of voting paper in Appendix 2).
- b. The quorum for a valid voting procedure is set at 50% of Member States casting their vote. Member States of the NSHC taking a seat in the Council are then elected by simple majority. An incomplete or blank voting paper is a valid voting option and does not count against the quorum.
- c. If no quorum is achieved, the voting window is extended for two weeks and the Chair invites the missing Member States to cast their vote. The existing votes stand.
- d. If still no quorum has been achieved, the chair designates the Member States for the Council based on the votes cast.
- e. In case of a draw the candidate that has not been selected by the NSHC for the Council for the longest time is selected. If this proves inconclusive the Chair will designate a candidate as the selected Member State by the NSHC.

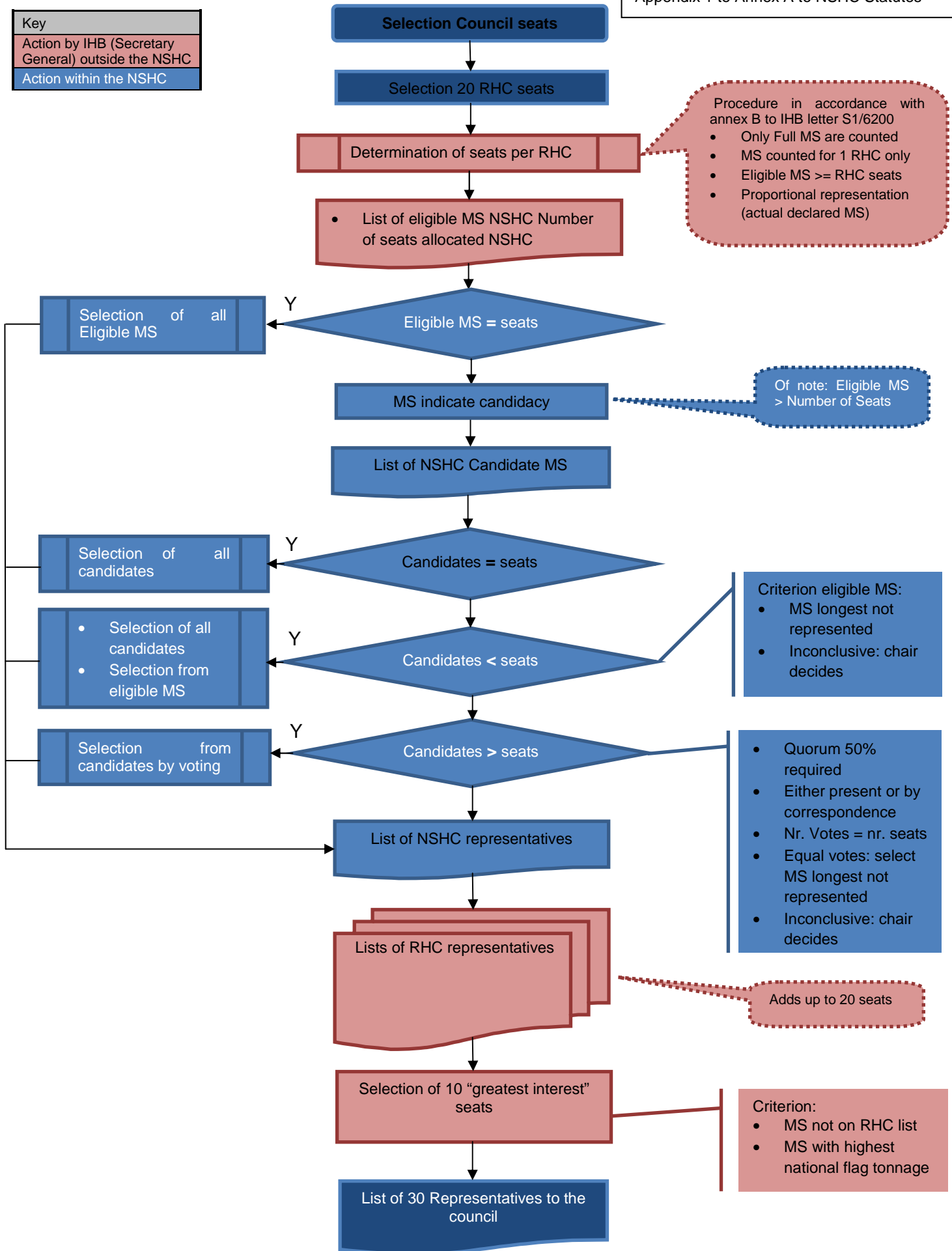
8. In order to warrant the integrity of the selection process, the Chair presents the voting forms to the observer of the secretariat of the IHO to the NSHC Conference, and requests this observer to confirm the integrity of the selection process.

### **Representation of Member State selected by the NSHC**

9. The Member States selected by the NSHC for the Council are normally represented by the head of the Hydrographic office. Each Member State shall inform the Chair of the NSHC and the Secretary-General of the IHO of the name of its official representative. An alternate may also be designated.

10. Member States selected by the NSHC shall inform the Chair of the NSHC and the Secretary-General of any changes in representation, whether permanent or temporary, as soon as practicable.

Key
Action by IHB (Secretary General) outside the NSHC
Action within the NSHC



**SELECTION OF MEMBER STATES BY THE NSHC FOR THE IHO COUNCIL**

**Example of Voting Paper**

**Part A**

Number of Seats on Council allocated to the NSHC: *Chair inserts number in here*

(This is the number of boxes that may be marked below)

**Part B**

To vote for a candidate State put an 'X' in the adjacent box. The number of boxes that may be marked is shown in Part A above.

<i>Chair inserts candidate State A in here</i>	<i>Votes indicated with an X here</i>
<i>Chair inserts State B in here</i>	<i>Votes indicated with an X here</i>
<i>Chair inserts State C in here</i>	<i>Votes indicated with an X here</i>
<i>insert other States if appropriate</i>	<i>Votes indicated with an X here</i>

Member State: ..... Date: .....

Authorised By: ..... Position: .....

(signature)