

PROCEDURE FOR THE SELECTION OF MEMBER STATES BY THE BSHC FOR THE IHO COUNCIL

Selection of Member States by the BSHC for the IHO Council shall be determined in compliance with IHO General Regulations Articles 2 and 16.

Role and Authority of Member States selected by the BSHC for the Council

1. IHO Member States selected by the BSHC, shall occupy their seat on the Council for all sessions of the Council throughout the inter-sessional period between Assemblies.
2. All expenses connected with the participation of Member States selected for the Council shall be defrayed by their respective State, in accordance with IHO General Regulation Article 3.
3. In carrying out their role as a Member State selected by the BSHC for the Council, the selected Member States shall take into account the views of the Commission.¹

Selection Procedure (see also flowchart Appendix 1)

4. Three months before an ordinary session of the Assembly, the Secretary-General shall inform the Chair of the BSHC of:
 - a. the number of seats allocated to the BSHC, and
 - b. those Member States that are eligible for selection by the BSHC.
5. If the number of Member States eligible for selection by the BSHC for the Council is equal to the number of seats on the Council assigned to the BSHC by the Secretary-General under the terms of clause 4 above, then the aforementioned eligible Member States will be selected by the BSHC.
6. If the number of Member States eligible for selection by the BSHC for the Council is greater than the number of seats assigned to the BSHC by the IHO Secretary-General under the terms of clause 4 above, then the Chair of the BSHC will invite those Member States that have been designated as eligible for selection to the Council to indicate if they wish to be considered as candidates for selection.
 - a. If the number of candidate Member States is equal to the number of seats on the Council assigned to the BSHC, then these candidate(s) will be selected by the BSHC.
 - b. If the number of candidate Member States is smaller than the number of seats on the council assigned to the BSHC, the candidate(s), if any, will be automatically designated and will be complemented by the eligible Member State(s) that have not been selected by the BSHC for the Council for the longest time. If this proves inconclusive, the Chair will designate eligible Members State(s) as selected by the BSHC.²

¹ As the Council is intended to speed up the decision process within the IHO, the members selected by a RHC have to be flexible and can't reassure their acting in the Council with the RHC. The wording "take into account the views of the commission" is meant to ensure the regional representation and the necessary flexibility.

² If there is no candidate, the Chair will designate MS(s) according to the regulations under 6b. If there are more than one seat for the BSHC and less candidates, the chair will designate additional MS according to the regulations under 6b.

- c. If the number of candidate Member States is greater than the number of seats on the Council assigned to the BSHC, the candidate(s) to be selected by the BSHC for the Council will be designated through a voting procedure.

Voting Procedure

7. The voting procedure will take place in the three months prior to the Assembly, preferably at a Conference of the BSHC otherwise by correspondence if no BSHC Conference is scheduled.

- a. Each Member State may submit one voting paper marking as many candidate Member States from the list as seats have been assigned to the BSHC (see example of voting paper in Appendix 2).
- b. The quorum for a valid voting procedure is set at 50% of Member States casting their vote. Member States of the BSHC taking a seat in the Council are then elected by simple majority. An incomplete or blank voting paper is a valid voting option and does not count against the quorum.
- c. If no quorum is achieved, the voting window is extended for two weeks and the Chair invites the missing Member States to cast their vote. The existing votes stand.
- d. If still no quorum has been achieved, the chair designates the Member States for the Council based on the votes cast.
- e. In case of a draw the candidate that has not been selected by the BSHC for the Council for the longest time is selected. If this proves inconclusive the Chair will designate a candidate as the selected Member State by the BSHC.

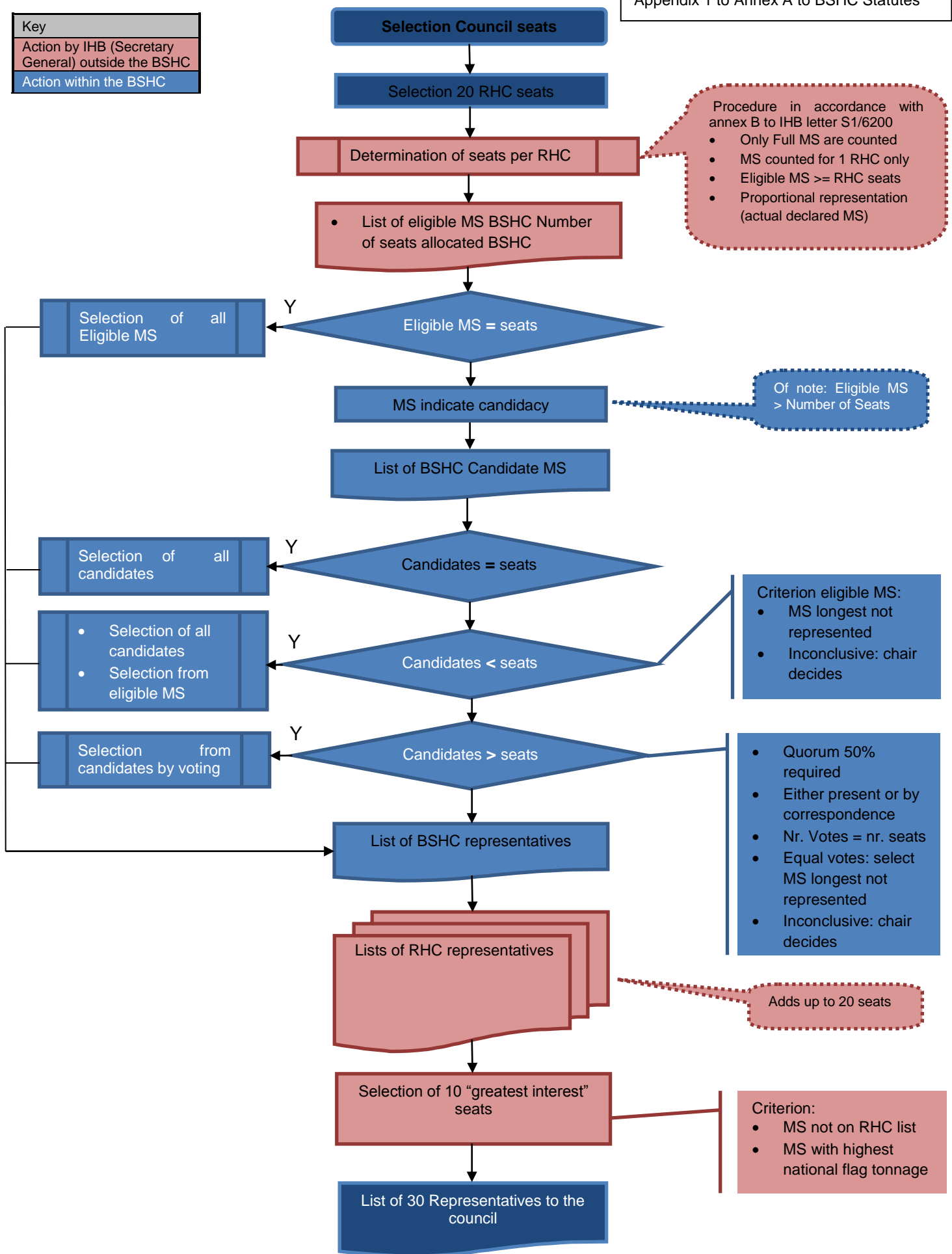
8. In order to warrant the integrity of the selection process, the Chair presents the voting forms to the observer of the secretariat of the IHO to the BSHC Conference, and requests this observer to confirm the integrity of the selection process.

Representation of Member State selected by the BSHC

9. The Member States selected by the BSHC for the Council are normally represented by the head of the Hydrographic office. Each Member State shall inform the Chair of the BSHC and the Secretary-General of the IHO of the name of its official representative. An alternate may also be designated.

10. Member States selected by the BSHC shall inform the Chair of the BSHC and the Secretary-General of any changes in representation, whether permanent or temporary, as soon as practicable.

Key
Action by IHB (Secretary General) outside the BSHC
Action within the BSHC



SELECTION OF MEMBER STATES BY THE BSHC FOR THE IHO COUNCIL

Example of Voting Paper

Part A

Number of Seats on Council allocated to the BSHC: *Chair inserts number in here*

(This is the number of boxes that may be marked below)

Part B

To vote for a candidate State put an 'X' in the adjacent box. The number of boxes that may be marked is shown in Part A above.

<i>Chair inserts candidate State A in here</i>	<i>Votes indicated with an X here</i>
<i>Chair inserts State B in here</i>	<i>Votes indicated with an X here</i>
<i>Chair inserts State C in here</i>	<i>Votes indicated with an X here</i>
<i>insert other States if appropriate</i>	<i>Votes indicated with an X here</i>

Member State: Date:

Authorised By: Position:

(signature)