



Baltic Sea International Charting Coordination Working Group (BSICCWG)

BSICCWG Report to the BSHC 22nd Conference

1. Status of the work of BSICCWG

Mr Jarmo Mäkinen has acted as the Chair of the BSICCWG. There is no permanent secretary for the WG. Mr Jukka Helminen has acted as a secretary in the BSICCWG4 meeting.

The membership of the WG:

<i>Denmark</i>	<i>Mr Peter Ladegaard Sørensen</i>
<i>Estonia</i>	<i>Ms Nele Savi</i>
<i>Finland</i>	<i>Mr Jarmo Mäkinen</i>
<i>Finland</i>	<i>Mr Jukka Helminen</i>
<i>Germany</i>	<i>Ms Sylvia Spohn</i>
<i>Latvia</i>	<i>Ms Linda Purina</i>
<i>Latvia</i>	<i>Ms Ilze Driksne</i>
<i>Lithuania</i>	<i>Ms Viktoras Liulys</i>
<i>Poland</i>	<i>Mr Jacek Kijakowski,</i>
<i>Poland</i>	<i>Mr Stanislaw Pietrzak</i>
<i>Russia</i>	<i>Capt Sergey Egorov</i>
<i>Sweden</i>	<i>Ms Anita Bodin</i>

The **BSICCWG4 meeting** took place in **Tallinn, Estonia 30 November-1 December 2016**. An invitation to the meeting was also sent to NSHC ICCWG coordinator, Mr Andy Hinton, but he was unable to attend BSICCWG4 meeting.





2. BSICCWG4-meeting 30 Nov-1 Dec 2016 in Tallinn, Estonia.

Participants:

<i>Ilze Driksne</i>	<i>Latvia</i>
<i>Dana Kuznetsova</i>	<i>Estonia</i>
<i>Nele Savi</i>	<i>Estonia</i>
<i>Olavi Heinlo</i>	<i>Estonia</i>
<i>Gabriela Kotsulim</i>	<i>Estonia</i>
<i>Lea Haabu</i>	<i>Estonia</i>
<i>Tõnis Siilanas</i>	<i>Estonia</i>
<i>Maris Akkerman</i>	<i>Estonia</i>
<i>Darja Günter (Day 2)</i>	<i>Estonia</i>
<i>Peter Ladegaard Sørensen (Day 1)</i>	<i>Denmark</i>
<i>Sylvia Spohn</i>	<i>Germany</i>
<i>Stanislaw Pietrzak</i>	<i>Poland</i>
<i>Andrzej Dolecki</i>	<i>Poland</i>
<i>Anita Bodin</i>	<i>Sweden</i>
<i>Jukka Helminen</i>	<i>Finland (Secretary)</i>
<i>Jarmo Mäkinen</i>	<i>Finland (Chair)</i>

The agenda of the BSICCWG4 meeting was divided into two parts; paper chart issues (first day) and ENC issues (second day).

Paper chart issues (first day)

Status of BSICCWG and its work

- minor editorial changes to BSICCWG TORs was made (names of working groups according new HSSC wg structure)
- some changes in WG membership (Berit Holse (DK) is not a member anymore. Ilze Driksne was added as a new member of Latvia)

Outcome of BSHC 21st Conference

- BSICCWG report was reviewed and draft actions from BSHC21 discussed.

Guidance for Preparation and Maintenance of International (INT) Chart and ENC Schemes

- Draft version of new IHO S-11 Part A was discussed. Monitoring of ENCs has included to the new version as a separate chapter.

INT Chart Web Catalogue; Updating of S-11 Part B, Region E

- Clarification of updating process was made. S11 Part B was reviewed step by step. The chair demonstrated how excel files can be downloaded and uploaded. There was a discussion on cycle of updating process, chart locking problems, chart rejecting process, printer nation status etc
- Timeframe for development phase II has not confirmed. ENC coverage as a new chart layer would be useful.
- link to [INT Chart Web Catalogue](#)

Status of Updates in Region E

- Web Catalogue and Tool are successfully used in EE, DE, LV, FI, SE. DK, RU updates are missing. Updates from Denmark and Russia are expected.
- INT chart Producer and Printer Nations and INT Chart Coordinators/ICCWGs are now expected to maintain regional databases using INTOGIS. Without that, catalogue will have old information of new editions etc.
- It was agreed that updating the S11 Web Chart tool should be a continuous part of the chart publishing process in every member state.
- latest version of database is: [S-11, Part B, Region E, Ed. 3.0.6.](#), June 2017, English



Baltic Sea INT Scheme- Status of New INT Charts/Numbers

- The need for the numbers for new INT charts was reviewed. Most of the new numbers have already been agreed before.
Estonia 1-7, Denmark 9, Germany 7, Poland 2, Sweden 5, Finland 11, Latvia 4.
- Germany reported planned changes to the Baltic Sea and North Sea. Germany was willing to give responsibility to produce chart INT1201 DE40 (1:250 000) for some other country. It was agreed that Sweden will take the chart to Swedish INT chart portfolio.
- Poland has published new INT charts 1340 and 1341 in 2016. Poland informed that INT charts 1294, 1218 and 1219 will stay as they are now.

Baltic Sea sub-areas Defining Exact Limits for Sub-areas

- The background for the project for defining the exact limits for sub-areas was discussed.. The process to finalize the accurate limits has been slow. Feedback from BALTICO was also discussed. Feedback for the limits has received now from DE, EE, LV and SE and FI. Examples how to use titles on charts was demonstrated.

Revised Management, Review and Monitoring of New INT Charts (IHO CL 64/2015)

- Monitoring of new INT charts finished after meeting in March 2017. Check list was reviewed in meeting. Chair will send feedback to IHO.

ENC issues (second day)

IHO ENC Catalogue

- ENC catalogue has been found useful. Members had experienced difficulties in finding the catalog from IHO websites and it was suggested that there could be a link to it from S11-A. Estonia informed that the IHO Catalogue has some incorrect metadata since the compilation scale is 10 000 on all cells. There was also discussion on how often the catalogue is being updated in IHO.

Status of ENC Coverage in Baltic Sea. Review of Baltic Sea ENC –scheme

- Baltic Sea ENC coverage was analysed by all member states. Finland will extend coastal coverage in the future. Finland will also extend ENC coverage to lake areas. Latvia will extend coastal coverage. Poland is planning new approach and berthing coverage.
- Estonia presented its project for changing the compilation scale for the Estonian approach cells.
- There was a brief discussion on how to inform changes in the ENC coverage. Information of all small changes was not seen important. Possibility to get an automatic e-mail, when ENC coverage is changing significantly will be discussed with Primar.

Gaps and Overlaps Analysis from WENDWG6

- There was a discussion about gaps and overlaps on ENC's in Baltic Sea and about analyzing the list from WENDWG6. Germany informed that the overlap between Baltic Sea and North Sea overview cell had been corrected. It was agreed that every member will comment to the chair how to solve overlaps by cells on the list.

Baltic Sea ENC Harmonisation Recommendations

- Review of the recommendations was started.
- Wording of recommendation 2 was modified.
- On recommendation it 3 was noted that Estonia is using two different compilation scales in approach level. Estonia is currently harmonizing the compilation scales on approach level.
- Estonia noted that recommendation 5 is still on progress in Estonia
- Recommendations 8 and 9 were adopted by every nation.
- On recommendation 10 it was discussed that this issue is highly dependent on the software developers.
- With recommendation 11 there was a brief discussion about new object classes and virtual AIS objects. It was agreed that recommendation 11 and recommendation 12 are still relevant because they are something that should be monitored.
- Recommendation 14 was suggested to be removed from the list.
- Work will be finalized in the next meeting.



3. Actions from BSHC21 (according a draft list of BSHC21 actions).

20.	D.1	Continue discussions on AIO layer mentioned in WENDWG Report to BSHC 21 st Conference.	BSICCWG Chair	BSHC 22	Done?
-----	-----	---	---------------	---------	-------

- AIO discussion was continued in WENDWG7 and in IRCC9.

21.	D.2	To clarify procedures for updating the INT Chart web Catalogue.	BSICCWG Chair	BSHC 22	Done?
-----	-----	---	---------------	---------	-------

- Updating procedure with INT Chart Web Catalogue was reviewed step by step in BSICCWG4

22.	D.2	MS are invited to nominate 2 delegates to BSICCWG for paper charts and ENCs.	All MS	BSHC 22	Done?
-----	-----	--	--------	---------	-------

- One or two delegates. More important is to have capacity for both paper chart and ENC issues. Two delegates/ member state, if needed.

23.	D.2	BSICCWG Chair to continue discussions within BSHC MS regarding future of paper charts.	BSICCWG Chair	BSHC 22	Done?
-----	-----	--	---------------	---------	-------

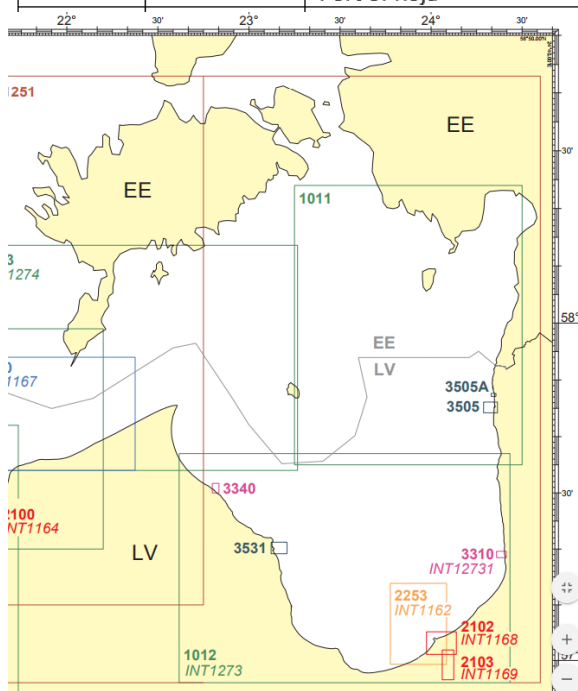
- Examination regarding future of paper charts is going on under IHO/NCWG.

4. New INT charts/-numbers

Latvia:

-4 small ports where the SOLAS vessels enters, have now got new INT numbers.

Chart No	INT No	Chart Title	Scale	Co-ordinates
3505	INT 12734	Baltic Sea, Gulf of Riga. Port of Salacgrīva	1:5000	57°44.20'N 24°17.30'E 57°46.10'N 24°22.20'E
3310	INT 12731	Baltic Sea, Gulf of Riga. Port of Skulte	1:3000	57°18.47'N 24°21.57'E 57°19.60'N 24°24.80'E
3531	INT 12733	Baltic Sea, Gulf of Riga. Port of Mērsrags	1:5000	57°19.20'N 23°07.32'E 57°21.20'N 23°12.50'E
3340	INT 12732	Baltic Sea, Gulf of Riga. Port of Roja	1:3000	57°30.00'N 22°47.90'E 57°31.70'N 22°50.10'E





5. Future work of BSICCCWG

The future work of BSICCCWG will include among other:

- Take INTOGIS tools into use in all the Baltic Sea countries
- To put continuously updating of S-11, Part B as a permanent process in member states.
- Review and Monitoring of new INT Chart according check list provided by IHB (IHO CI 64/2015). After two-year trial procedure it has proposed to standardize the procedure (*IRCC9-11B*).
- Identify, resolve, prevent and report how to solve ENC overlaps (and gaps) in Baltic Sea area (*IRCC9-07D3*).
- Finalize study of reviewing Baltic Sea ENC harmonization recommendations
- ENC scheming at the regional level (approval of new edition of S-11, Part A.
- New ENC related tasks for ICCWGs (e.g. WENDWG6 action 06) -> need to increase ENC related skills in the WG.

6. Next BSICCCWG-meeting

The next meeting(BSICCCWG5) will be held in Gdynia, Poland 21-22.11.2017.

7. Actions for the BSHC 22nd Conference

- note this report
- give further guidance on future work of WG.

ANNEX 1- point of contacts on ENC issues:

Name/Country	E-Mail	Phone
Ilze Driksne / Latvia	ilze.driksne@lhd.lv	+371 29188836
Dana Kuznetsova / Estonia	dana.kuznetsova@vta.ee	+372 6205623
Darja Günter / Estonia	darja.gynter@vta.ee	+372 6205634
Sven Feddersen /Germany (cc Sylvia Spohn)	sven.feddersen@bsh.de sylvia.spohn@bsh.de	+49-381-4563-767
Stanislaw Pietrzak /Poland	s.pietrzak@ron.mil.pl	+48 262266228
Hans Engberg / Sweden	hans.engberg@sjofartsverket.se	+46 104784883
Jukka Helminen /Finland	jukka.helminen@fta.fi	+358 295343461
Sergey Egorov /Russia	unio@mil.ru	

ANNEX 2- Status of Baltic Sea ENC Harmonisation recommendations

Status of Baltic Sea ENC harmonization recommendations 2017

Rec. #	Recommendation	Denmark	Estonia	Finland	Germany	Latvia	Lithuania	Poland	Russia	Sweden
#1	1a) Overview navigational purpose should be in harmony with other navigational purposes within the producers' portfolios. 1b) The Overview cell should be harmonised with adjacent cells in the North Sea.									
#2	The Harbour and Berthing navigational purposes should be in harmony with other navigational purposes within the producers' portfolios									
#3	On the Baltic Sea, the following values for the compilation scales should be used: General - 180,000; Coastal - 90,000; Approach - 22,000.									
#4	If a Hydrographic Office (HO) wants to use a compilation scale other than those recommended above, it may do so if all the following conditions are met: i) the value used is in line with the intention of the IHO CL 47/2004 ii) use of it is agreed bilaterally with neighbouring HO(s) concerned, in order to avoid inconsistencies at the border, and iii) every effort is made to minimise possible inconsistencies due to deviations from the recommended compilation scale.									
#5	BSHC should adopt the guidelines as stated in the Annex J.									
#6	6a) The BSEHWG proposes that the BSHC establishes a Working Group to study possibilities for Harmonisation of the Conveying and Presentation of Depth Information for both ENCs and paper charts.									

Status of Baltic Sea ENC harmonization recommendations 2017

Rec. #	Recommendation	Denmark	Estonia	Finland	Germany	Latvia	Lithuania	Poland	Russia	Sweden
	6b) Meanwhile, if the IHO recommended contour intervals are not applicable, or if additional intervals are needed, implementation should be agreed bilaterally/multilaterally so that possible inconsistencies to the mariners could be avoided.									
#7	All BSHC countries should ensure that bilateral agreements are in place with their neighbouring countries concerning harmonisation of features continuing/extending over national borders.									
#8	All BSHC countries should check and carry out harmonisation before launching updates or new editions of ENCs.									
#9	All BSHC countries should check that there are no gaps between cells at national borders by establishing a buffer zone of up to 5 metres, if necessary.									
#10	The BSHC should agree on joint plans and time schedules for the adoption of new versions of ENC related standards (e.g. S-57 Ed. 3.1.1 or S-101).									
#11	The BSHC should agree on joint plans and a time schedule for the adoption of new object classes on their products.									
#12	12a) BSHC should encourage all countries to make further studies of the use of objects in the Baltic Sea ENCs and report to the following BSHC meeting. 12b) BSHC should decide on proper actions to ensure ENC consistency as far as possible.									
#13	If found necessary it is possible to deviate from the recommendations. When doing so, the relevant HO should make every effort to minimise the effect of any inconsistencies that may occur. This should be done through bilateral/multilateral agreements and through harmonisation of data in order to ensure that no serious disharmony is introduced to the ENCs.									

Status of Baltic Sea ENC harmonization recommendations 2017

Rec. #	Recommendation	Denmark	Estonia	Finland	Germany	Latvia	Lithuania	Poland	Russia	Sweden
#14	BSHC should ask the IHO Committee on Hydrographic Requirements for Information Systems (CHRIS) to consider appropriate actions to recommend other Regional Hydrographic Commissions (RHCs) to adopt regional implementations to IHO consistency recommendations within their sea areas.									
#15	All relevant bodies are encouraged to continue the education of mariners regarding 'ECDIS', 'ECS', 'ENC' and 'Electronic chart'.									
#16	All BSHC countries should follow the time schedule for the implementation of all relevant recommendations as stated in Annex L.									
#17	Reporting of the implementation of the recommendations									

Explanation of the status classes

Status	Meaning	Example
Completed	Recommendation completed. No actions to BSHC members. No need to follow up any more.	Recommendation #14 has been completely done. Recommendation may be deleted in the Summary Table.
Adopted	Recommendation included in the ENC production process.	Rec. #9: before releasing new cells or editions to check that there are no gaps or overlaps (over 5 m buffer)
Partially Adopted	Recommendation included partially in the ENC production process (e.g. for some scale ranges or some products).	Rec #3 implemented only for some scale ranges.
Not applicable	Recommendation not relevant to a MS or for the time being.	Rec #10 may be valid e.g. when S-101 is introduced into use
Unclear	No information available or information not clear.	No or unclear status information received from a MS.