



XIII EAthC

SPAIN NATIONAL REPORT



**NATIONAL REPORT FOR THE 13th MEETING OF
THE EAST ATLANTIC HYDROGRAPHIC
COMMISSION (EAthC)
(NOV 2012 – SEP 2014)**

**INSTITUTO HIDROGRÁFICO DE LA MARINA
(IHM)**

CÁDIZ, SPAIN

Captain JOSÉ RAMÓN FERNANDEZ DE MESA TEMBOURY





XIII EAtHC SPAIN NATIONAL REPORT



HYDROGRAPHIC SERVICE: IHM
[HTTP://WWW.ARMADA.MDE.ES/IHM](http://www.armada.mde.es/ihm)

**INSTITUTO
HIDROGRAFICO
DE LA MARINA**

**Vista Virtual
del Instituto Hidrográfico de la Marina**

El Instituto Hidrográfico de la Marina es el organismo estatal español encargado de producir y mantener la cartografía y publicaciones náuticas de los puertos españoles y otros lugares de interés de utilidad para los navegantes. Una parte de los productos y servicios del Instituto se muestran a través de Internet pudiéndose por ejemplo obtener información y descargar o comprar actualizada de las Hojas de Carta Náutica de navegación marítima o datos sobre las cartas náuticas en vigor.

La información publicada en Internet está agrupada en siguientes apartados:

- * Presentación. Páginas de información general del Instituto: Página de entrada, Bienvenida, Reseña histórica, Misión y Contacto.
- * Productos y servicios. Accesos a los Navegantes, Catálogo Web de Cartas Náuticas, Publicaciones, Accesos de Venta y Distancia entre Puertos.
- * Informaciones de interés. Links de relación con la cartografía náutica y el resultado de búsquedas a bordo.
- * Enlaces a las páginas de Hojas Hidrográficas.

Esperamos que esta información sea de utilidad para el visitante y no dude en contactar con nosotros si tiene alguna sugerencia.





XIII EAthC SPAIN NATIONAL REPORT



SURVEYS

18 HYDROGRAPHIC CAMPAIGNS IN THE AREA OF EAthC to update Nautical Chart Scheme:

8 in the Gulf of Cádiz

10 in the North of the Iberian Peninsula





XIII EAthC SPAIN NATIONAL REPORT



SHIPS

2 "MALASPINA" CLASS



2 "ANTARES" CLASS



2 TRANSPORTABLE HYDROGRAPHIC
LAUNCHES





XIII EAthC SPAIN NATIONAL REPORT



SHIPS

2 "MALASPINA" CLASS



1 "ANTARES" CLASS



2 TRANSPORTABLE HYDROGRAPHIC
LAUNCHES



1 DEPLOYABLE BOAT





XIII EAthC SPAIN NATIONAL REPORT



SHIPS

1 Oceanic Research Vessel
For EEZ campaigns





XIII EAthC SPAIN NATIONAL REPORT



SHIPS

Cooperation agreements with Spanish State agencies to carry out hydrographic surveys in their ships



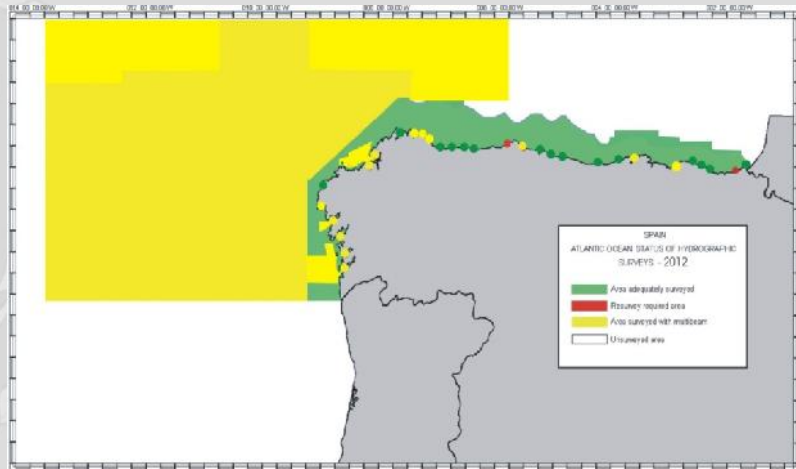


XIII EAthC SPAIN NATIONAL REPORT

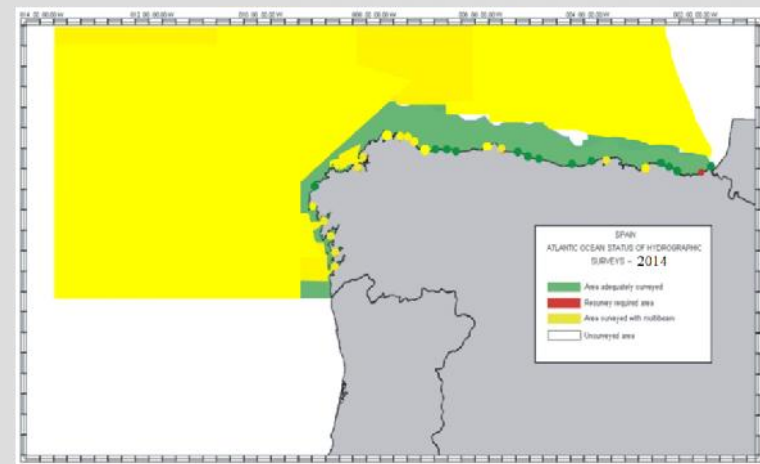


SURVEY STATUS NORTH

Green: Area adequately surveyed
Yellow: Area surveyed with multibeam
Red: Resurvey required area



2012



2014





XIII EAthC SPAIN NATIONAL REPORT

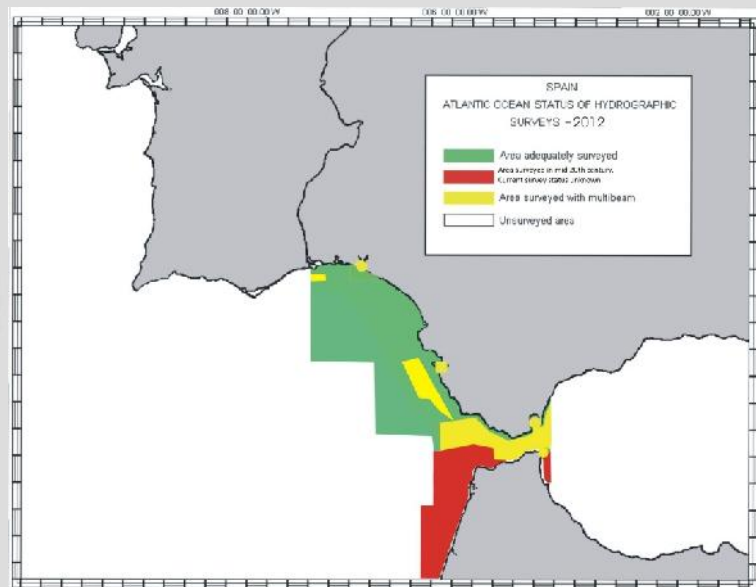


SURVEY STATUS SOUTH

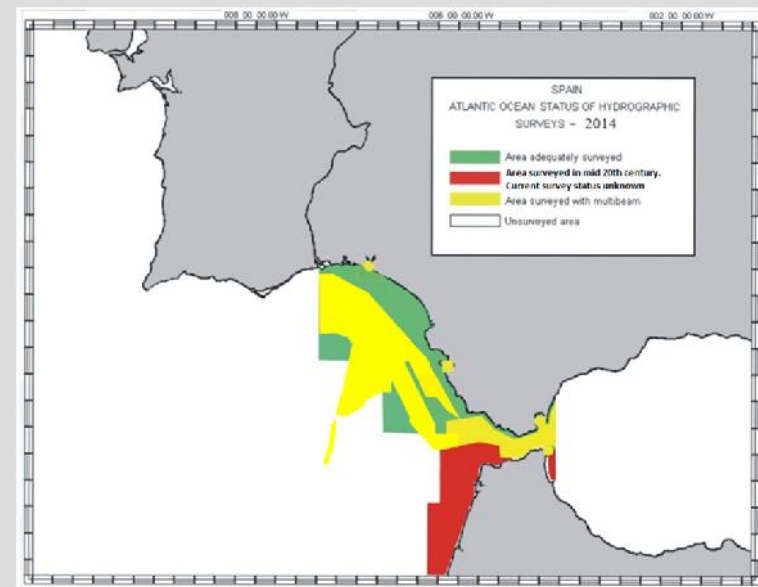
Green: Area adequately surveyed

Yellow: Area surveyed with multibeam

Red: Areas surveyed by IHM in mid 20th century. Current survey status unknown



2012



2014





XIII EAthC SPAIN NATIONAL REPORT

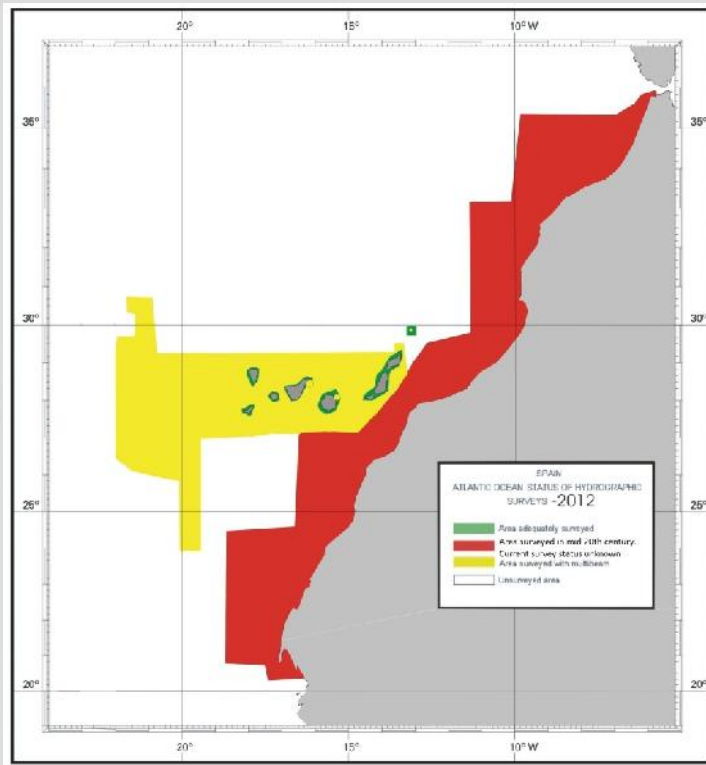


SURVEY STATUS NW AFRICA – CANARY ISLANDS

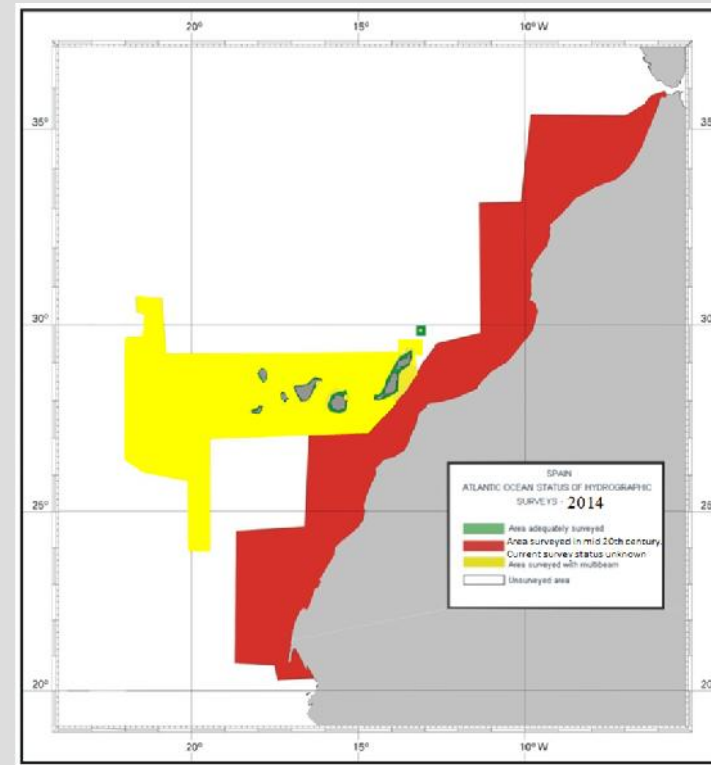
Green: Area adequately surveyed

Yellow: Area surveyed with multibeam

Red: Areas surveyed by IHM in mid 20th century. Current survey status unknown



2012



2014

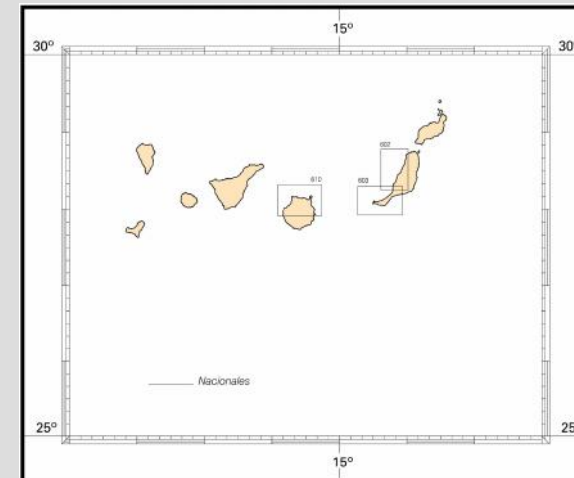
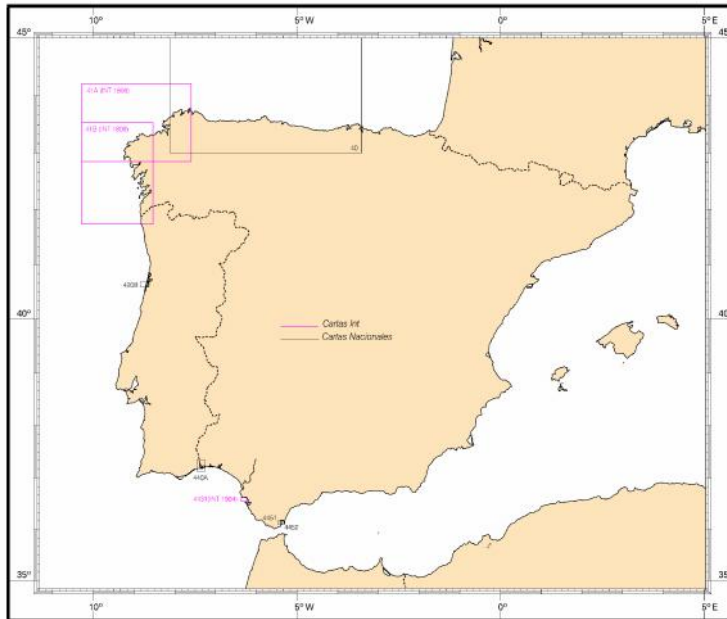




XIII EAtHC SPAIN NATIONAL REPORT



NEW CHARTS / UPDATES
PAPER CHARTS



3 NEW EDITIONS of INT CHARTS (in red)
4 NEW CHARTS and 4 NEW EDITIONS of NATIONAL CHARTS (in black)





XIII EAthC

SPAIN NATIONAL REPORT



NEW CHARTS / UPDATES ELECTRONIC NAVIGATIONAL CHARTS (ENCs)

Purpose 2 General	Purpose 3 Coastal	Purpose 4 Approach	Purpose 5 Harbour
4	11	38	51

EAthC ENC Production until July 5, 2014					
Purpose	Planned	Published	Pending	% Published	% Pending
2	4	4	0	100%	0%
3	11	11	0	100%	0%
4	38	38	0	100%	0%
5	94	51	43	54,26%	45,74%
Total	147	104	43	70,75%	29,25%



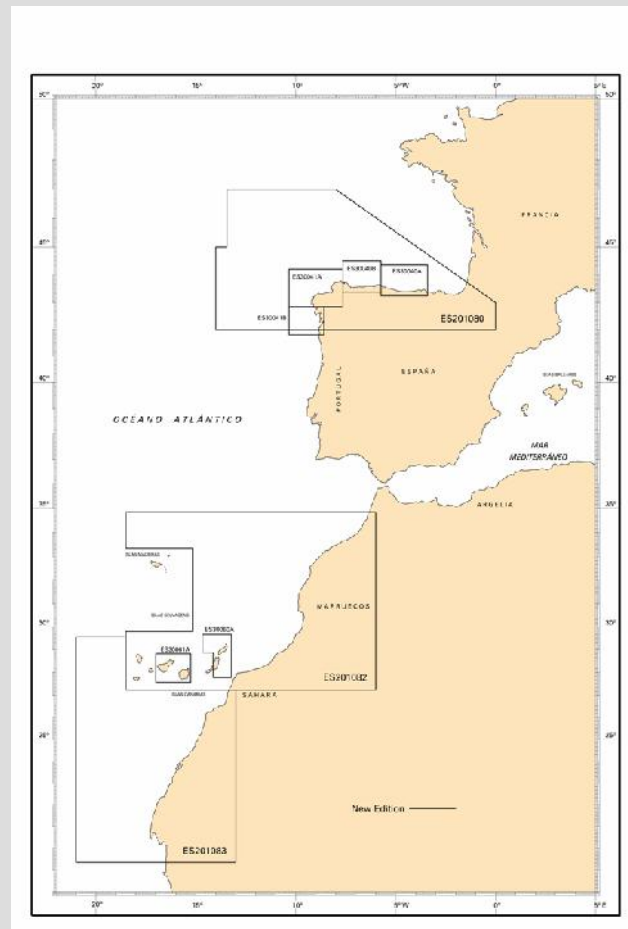


XIII EAtHC

SPAIN NATIONAL REPORT



NEW CHARTS / UPDATES ELECTRONIC NAVIGATIONAL CHARTS (ENCs)



9 New ENC editions for purposes 2 and 3



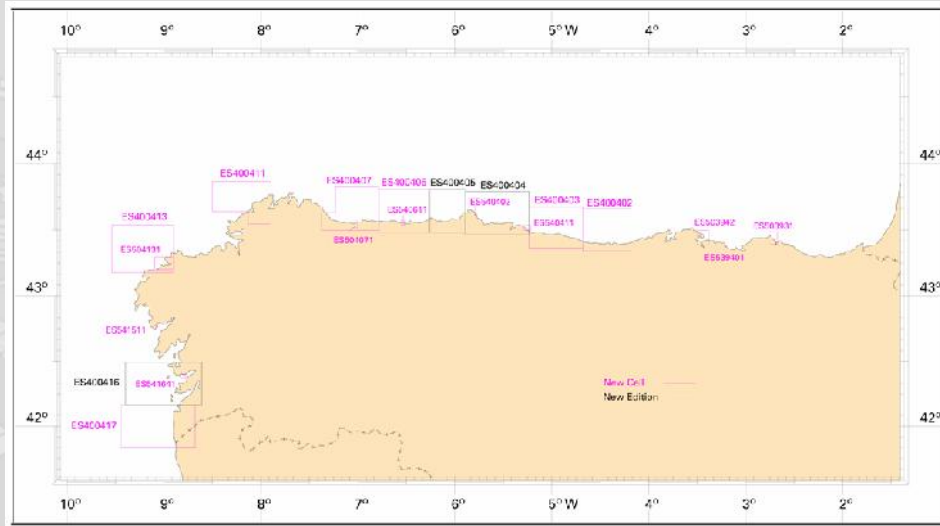


XIII EAtHC

SPAIN NATIONAL REPORT



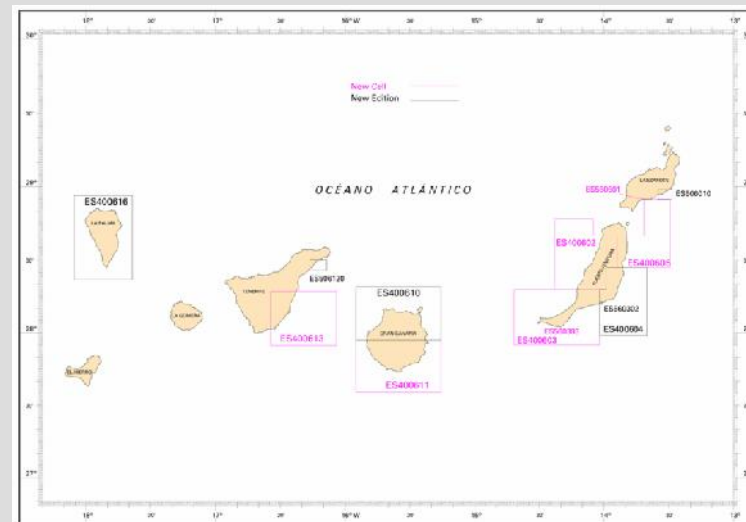
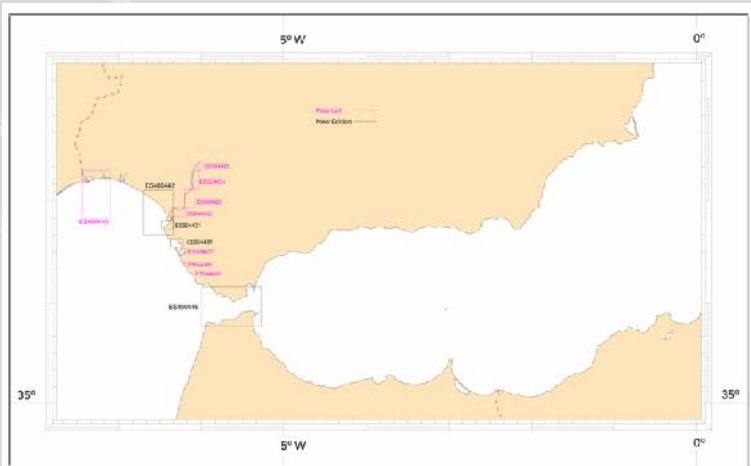
NEW CHARTS / UPDATES ELECTRONIC NAVIGATIONAL CHARTS (ENCs)



32 new ENC cells (in red)

13 new editions (in black)

for purposes 4 and 5



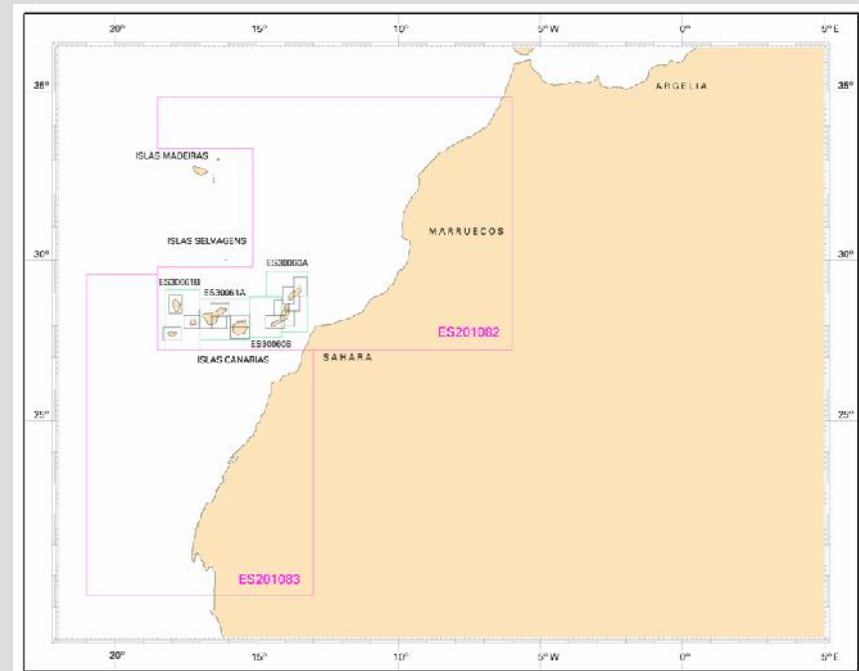
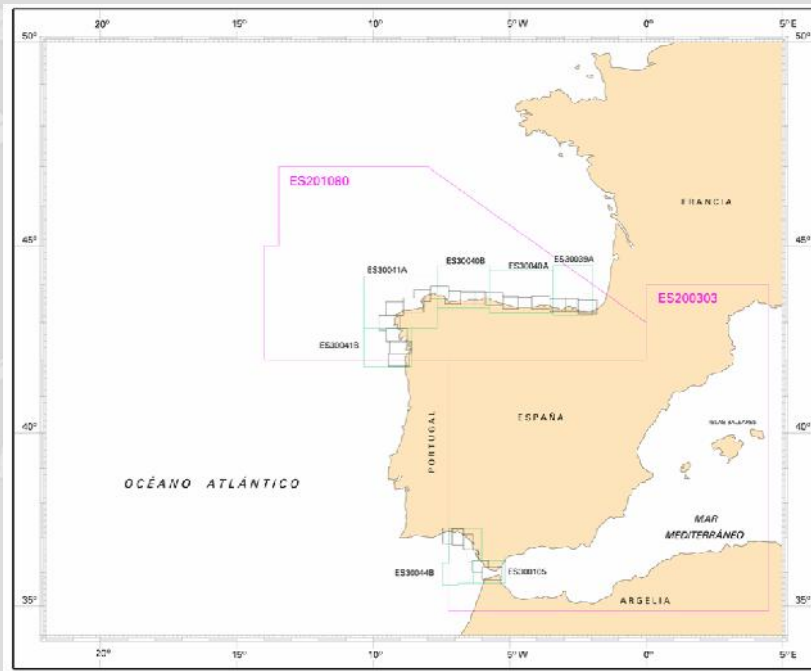


XIII EAtHC SPAIN NATIONAL REPORT



NEW CHARTS / UPDATES
ELECTRONIC NAVIGATIONAL CHARTS (ENCs)

Current Spanish ENC coverage in the area





XIII EAthC SPAIN NATIONAL REPORT



ENC Distribution





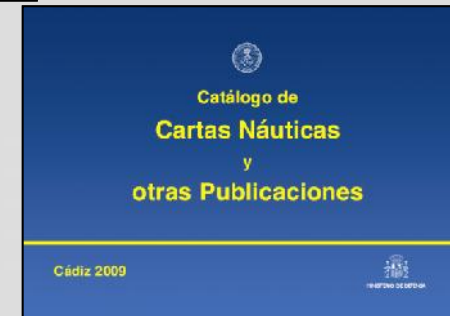
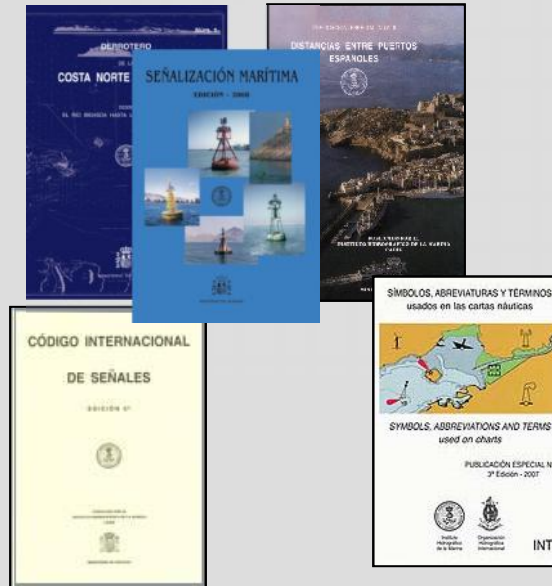
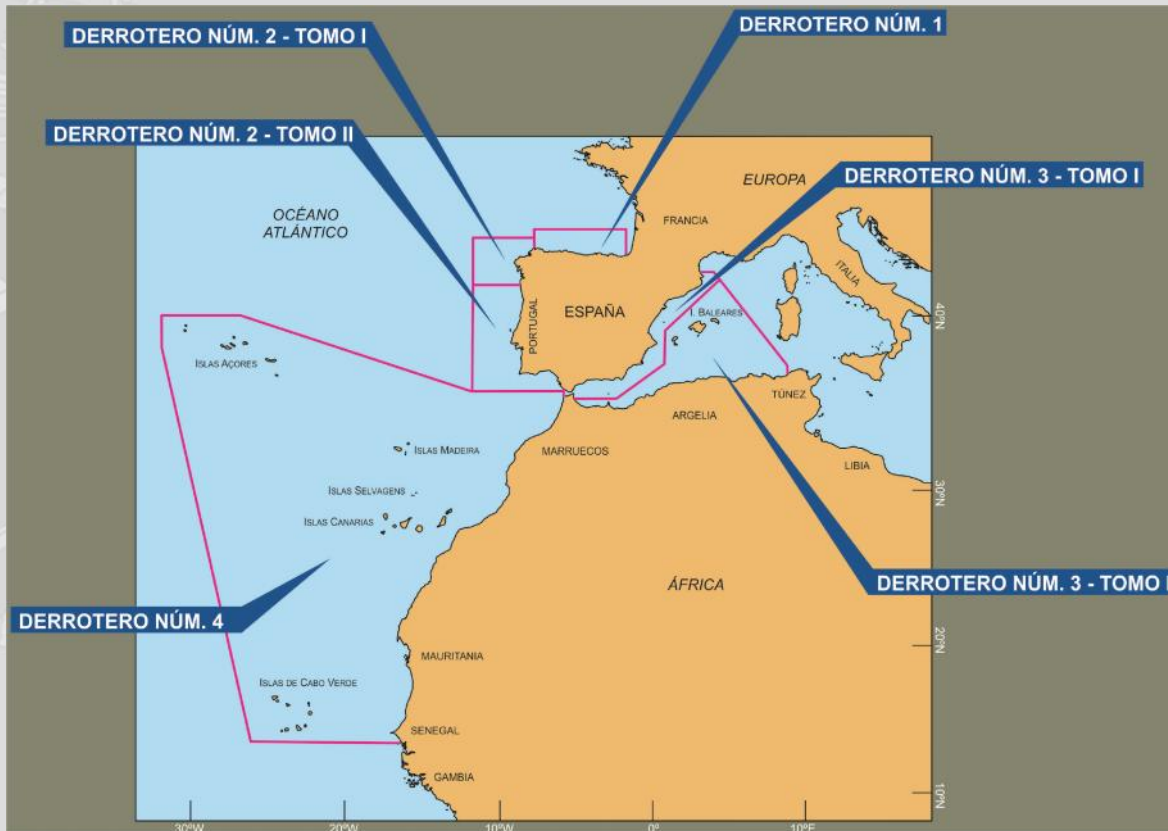
XIII EAtHC SPAIN NATIONAL REPORT



NEW PUBLICATIONS and UPDATES

No new publications

New editions: Please refer to the national report document to see the updates





XIII EAtHC SPAIN NATIONAL REPORT



NEW PUBLICATIONS and UPDATES

Means of delivery

interactive internet tool for the List of Lights and fog signals:

http://www.armada.mde.es/ihm/Aplicaciones/LibroFaros/LF_query/index.html

Boles de Niebla >> **Buscador**

Novedades Ayuda Contacto Salir

2: Del puerto de Güímar a la punta El Guindaste

búsqueda

Señal marítima: Selección Número Carta: Selección Carta

Fuente cartográfica WGS-84

IHM Google Lat: 28° 23.214' N Lon: 15° 53.962' W

Accesos rápidos

- 12630
- 12632
- 12632_2
- 12634
- 12634_2
- 12635
- 12636_2
- 12638
- 12639
- 12639_1
- 12639_2
- 12639_3
- 12640
- 12646
- 12648
- 12649
- 12649 L
- 12650
- 12652
- 12653
- 12657
- 12660
- 12670
- 12670 U
- 12675
- 12680
- 12682
- 12683
- 12684
- 12684
- 12694
- 12697
- 12698
- 12700
- 12703
- 12704
- 12706
- 12706
- 12707
- 12707
- 12710

ISLA	DESCRIPCIÓN	DE	Coordenadas	Altura (m)	Radio (m)	Material	Alcance (m)	Observaciones
ISLA FIENREVENTURA Puerto de RECARDO Para Punta García		DE	28 28.188 N 15 54.122 W	10/ 25	48	20	Torre cilíndrica blanca 4.1	0.3 - 4.5 Luz de reserva 100

Señal marítima seleccionada: 12649

ISLA DE TENERIFE
Puerto de SANTA CRUZ DE TENERIFE
Dársena pesquera
28 28.961 N 15 11.243 W
RUY Es. 3M

Imagen proporcionada por la Autoridad Portuaria, C.C.AA. etc.





XIII EAthC SPAIN NATIONAL REPORT



OCEANOGRAPHIC ACTIVITIES

IHM cooperates with other institutions in Spain to create a national tidal database, which will be available online in the future.



Cooperation with the Portuguese IHPT for an Iberian Peninsula oceanographic network





XIII EAthC

SPAIN NATIONAL REPORT



OTHER ACTIVITIES

IHM takes part in several committees and working groups of the IHO:

- Hydrographic Services and Standards Committee (HSSC)
- Standardization of Nautical Publications Working Group (SNPWG)
- Chart Standardization and Paper Chart Working Group (CSPCWG)
- Tidal and Water Level Working Group (TWLWG)
- Surface Current Working Group (SCWG)
- Marine Spatial Data Infrastructure Working Group (MSDIWG)
- World-Wide Navigational Warning Service Sub-Committee (WWNWS)
- Hydrographic Dictionary Working Group (HDWG)
- Finance Committee (FC)
- Hydrographic Commission on Antarctica (HCA)
- East Atlantic Hydrographic Commission (EAthC)
- Mediterranean and Black Sea Hydrographic Commission (MBSHC)





XIII EAthC SPAIN NATIONAL REPORT



OTHER ACTIVITIES Spatial Data Infraestructure (SDI)

IHM takes part in the national SDI programme <http://www.idee.es> along with other cartographic institutions



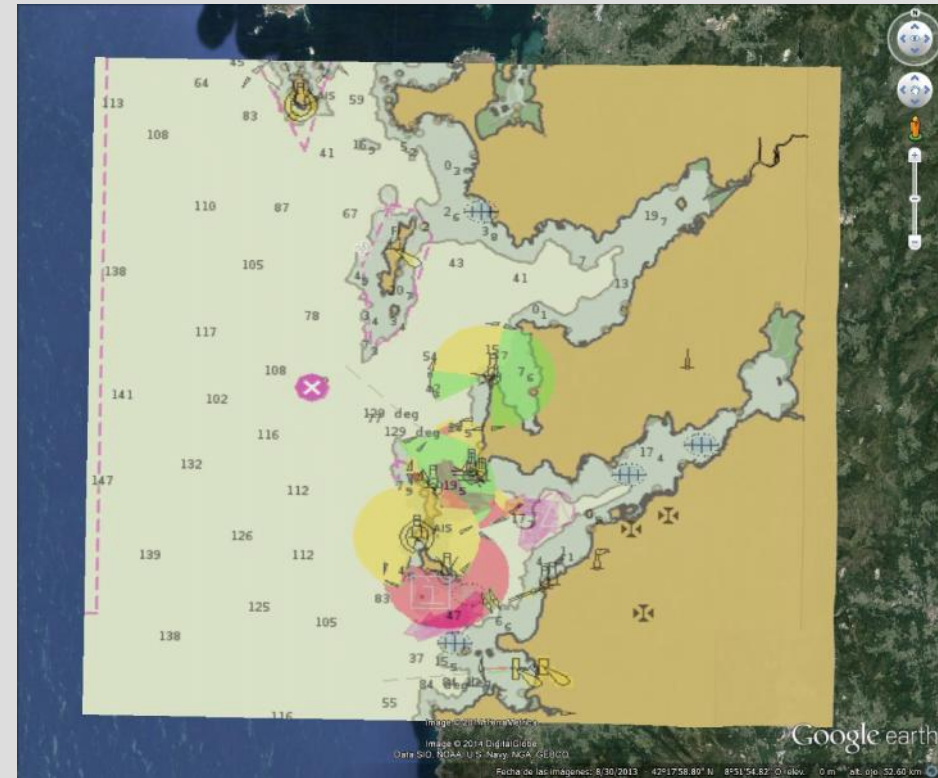
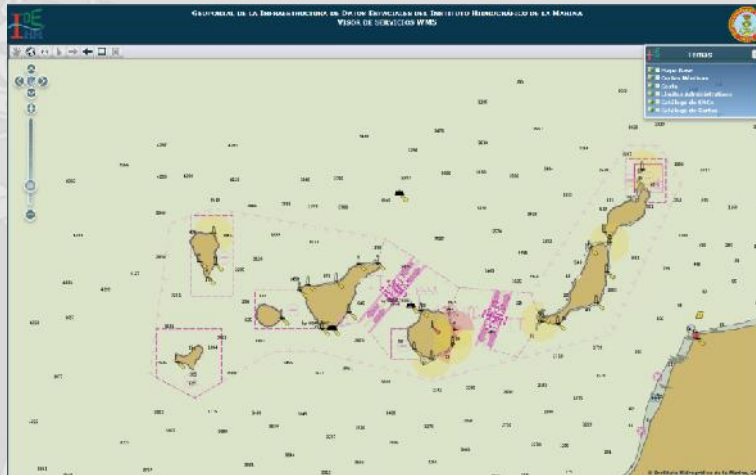


XIII EAthC SPAIN NATIONAL REPORT



OTHER ACTIVITIES Spatial Data Infraestructure (SDI)

Marine SDI IHM geoportal (viewer + Web Map Service)





XIII EAthC SPAIN NATIONAL REPORT



INTERNATIONAL COOPERATION

Joint survey campaigns with the Portuguese IHPT

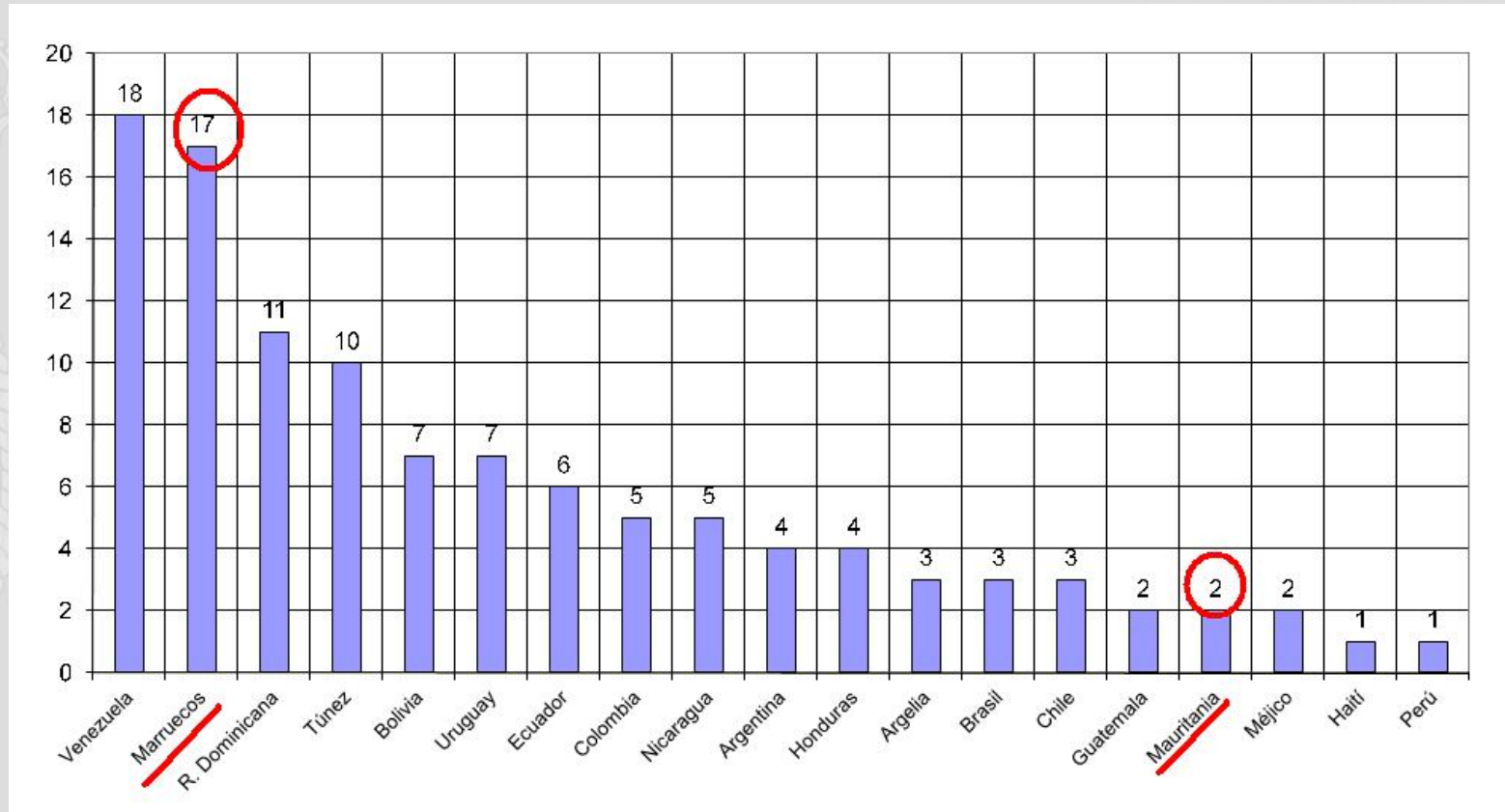




XIII EAthC SPAIN NATIONAL REPORT



CAPACITY BUILDING TRAINING OFFERED





XIII EAthC

SPAIN NATIONAL REPORT



CAPACITY BUILDING TRAINING RECEIVED

- One officer from IHM has completed the Nippon Foundation / GEBCO training program in Ocean Bathymetry at the University of New Hampshire, USA
- One officer from IHM is currently being trained at the UKHO, in the IHO – Nippon Foundation Cartography, Hydrography and Related Training Project.





XIII EAthC SPAIN NATIONAL REPORT

