

Region G ICC WG

Status of the INT scheme – Schéma INT pour la région G

Catalogue INT de la région G

Region G INT chart catalogue

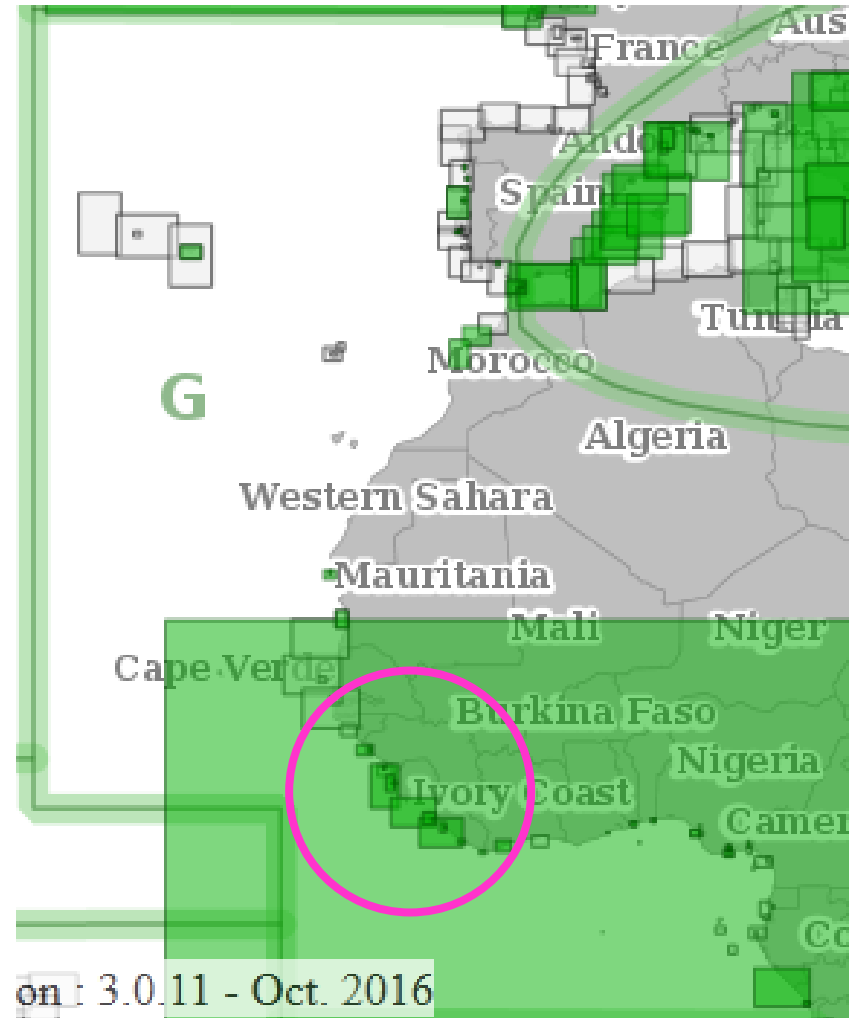
Depuis la dernière conférence: Changement de format du catalogue du ICCWG de la région G ou CHATINTCHART, désormais disponible via le portail INTToGIS.

Change of format of the Region G ICC WG/CHATINTCHART catalogue, which is now available through the INTToGIS portal.

CHAtO / <i>EAtHC</i>	13 th	14 th
Total Cartes INT <i>Total INT charts</i>	172	172
Cartes INT produites <i>Produced INT charts</i>	129	139
Cartes INT planifiées <i>Planned INT charts</i>	43	33
Ratio	75%	80%

Catalogue INT de la région G

Region G INT chart catalogue



INT Chart Proposals

France

→ FR7381 – ENC FR673810

Côte du Cameroun – Accès au port en eau profonde de Kribi

Echelle : 1/20 000 ;

→ FR7382 – ENC FR573820

Côte du Cameroun – Approches de Kribi

Echelle : 1/40 000.

→ FR7833 – ENC FR67833A/B

Ports et terminaux de Nouadhibou

cartouche A : Port de Nouadhibou (Port-Étienne) au 1 : 7 500 ;

cartouche B : Port minéralier de Nouadhibou (Cansado) au 1 : 7 500.

→ Portugal

→ PT66302 – Porte Grande (Mindelo – Ilha de Sao Vicente)

→ PT323 – Ilha do Principe

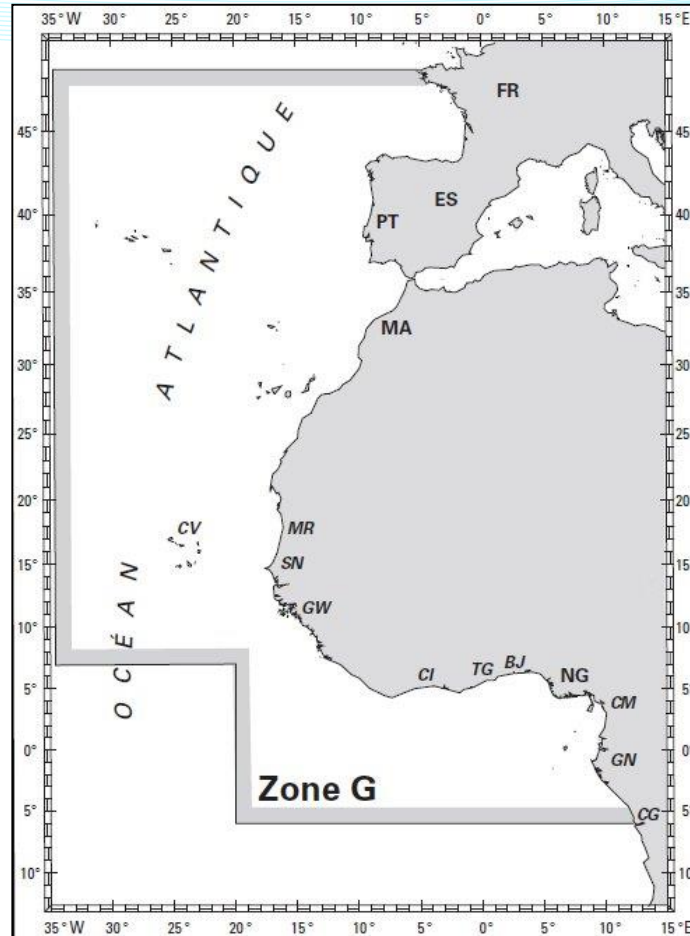


INT Chart collection management and monitoring

→ IRCC Recommendations

- a. **INT Chart Producer Nations** to provide INT chart (new publications and editions) to Regional INT Chart Coordinator (or ICCWG) **3 months prior to every RHC meeting**;
- b. **INT Chart Coordinators/ICCWGs** to manage the review of these charts and to check their compliance with IHO standards and report at every forthcoming RHCs meeting; then
- c. these charts, with the agreement of the **IHO INT Chart Producer Nation** to be subsequently transferred to the IHB for its chartroom reference collection and internal use (database validation, consultation, etc.);
- d. **IHO MS** to provide an update of the list of on-line chart catalogues, either directly or systematically when updating the Yearbook;
- e. On a case-by-case basis, when gaps in the collection are identified, the **IHB** to request **IHO INT Chart Producer Nations** to provide existing INT charts to the **IHB** directly in order to complete the IHB INT chart reference collection.



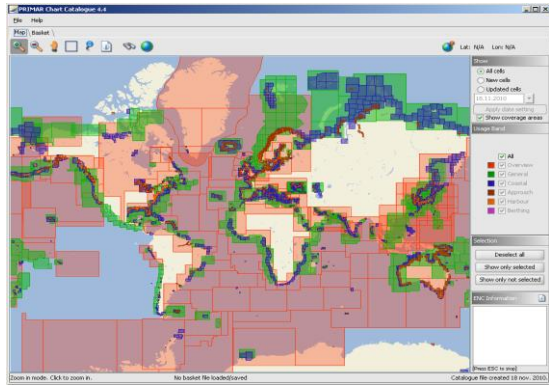
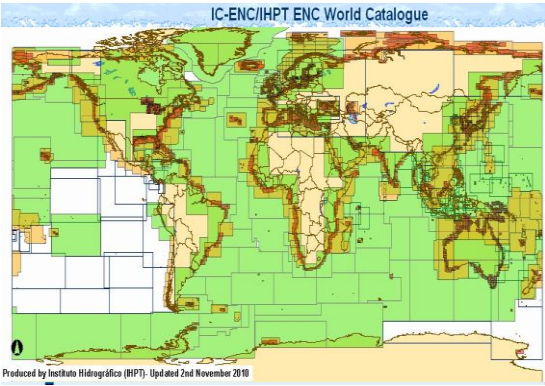
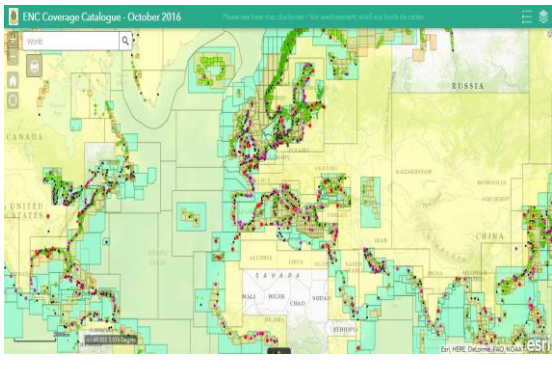


Region G ICC WG

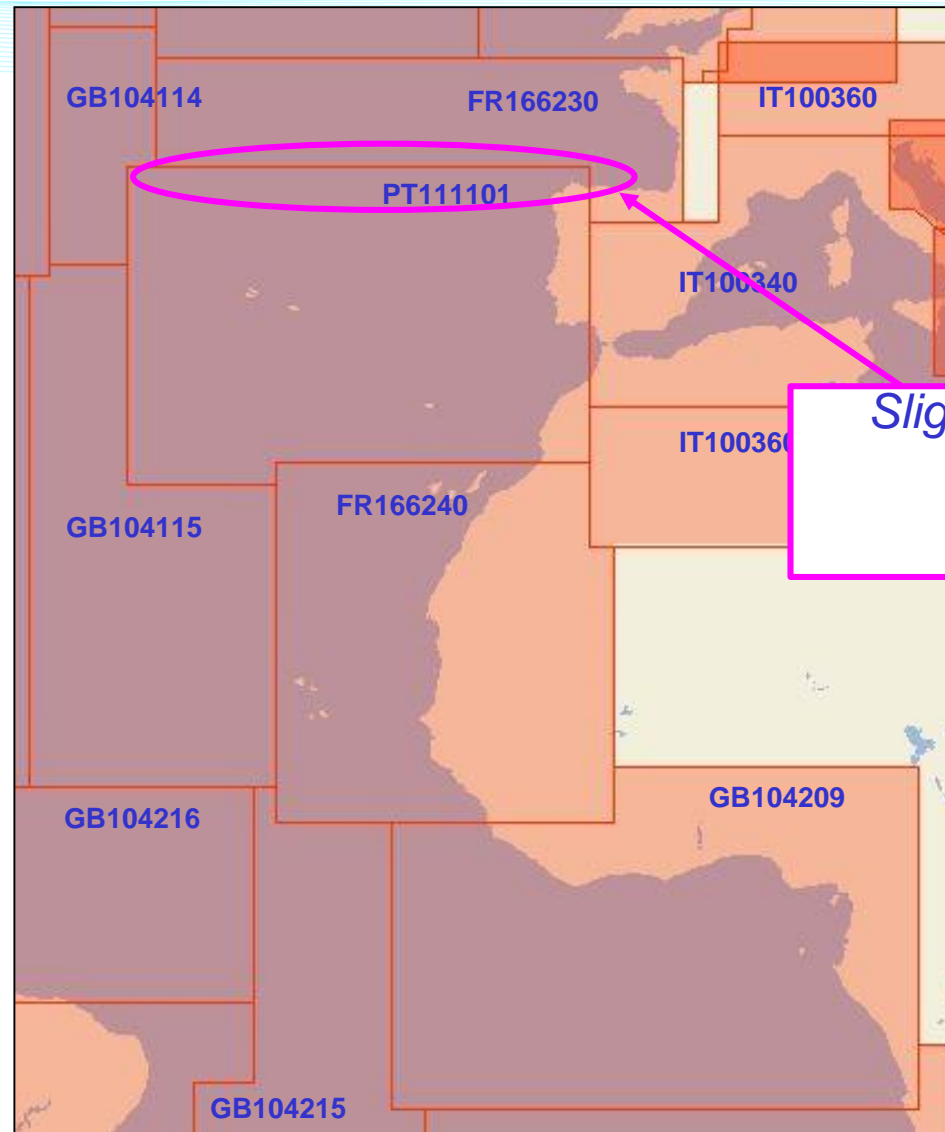
Status of the ENC scheme – Couverture ENC pour la région G

Catalogue ENC

ENC catalogue

<i>Primar</i>	<i>IC-ENC</i>	<i>IHO</i>
<p>http://www.primar.no</p>	<p>http://www.ic-enc.org</p>	<p>http://iho.maps.arcgis.com/apps/webappviewer/index.html?id=459311d1c7144a2696f44773b922d058</p>
		

ENC UB 1 Status (Overview)

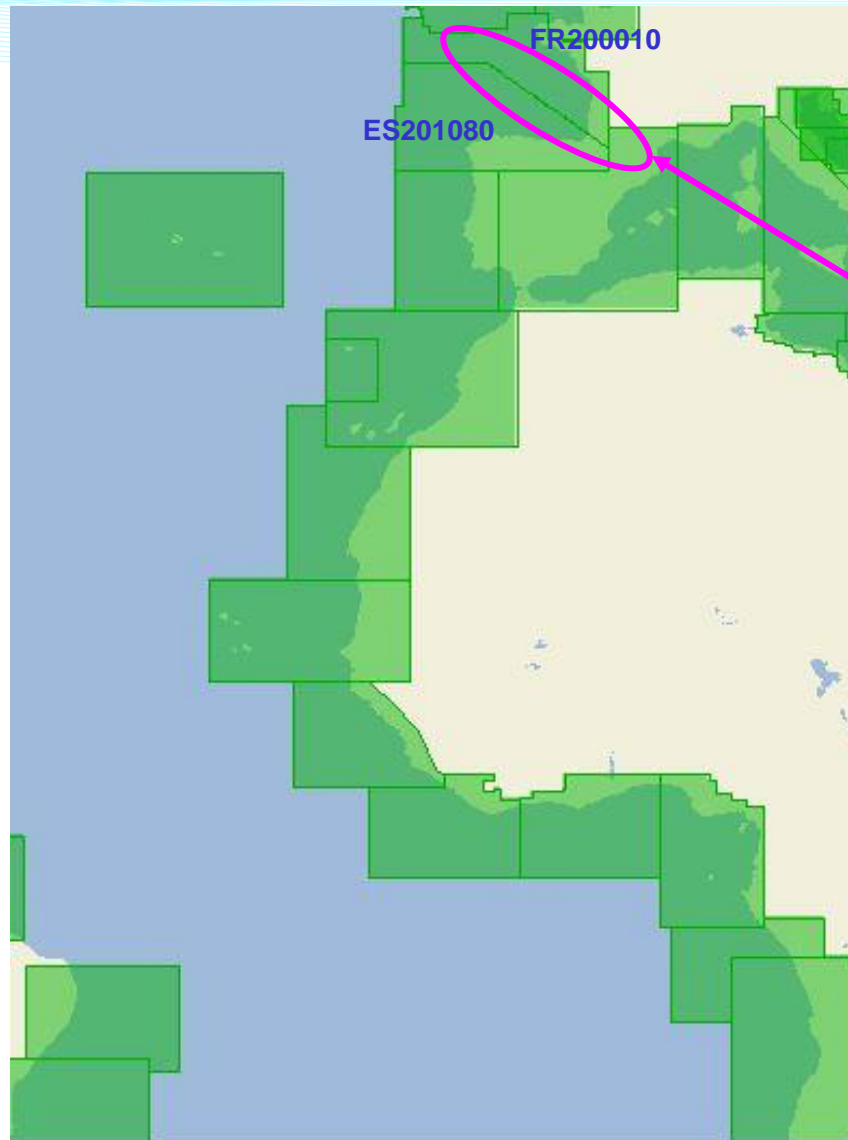


*Slight overlap between
FR166230
PT111101*

Source: Primar.org (2016)



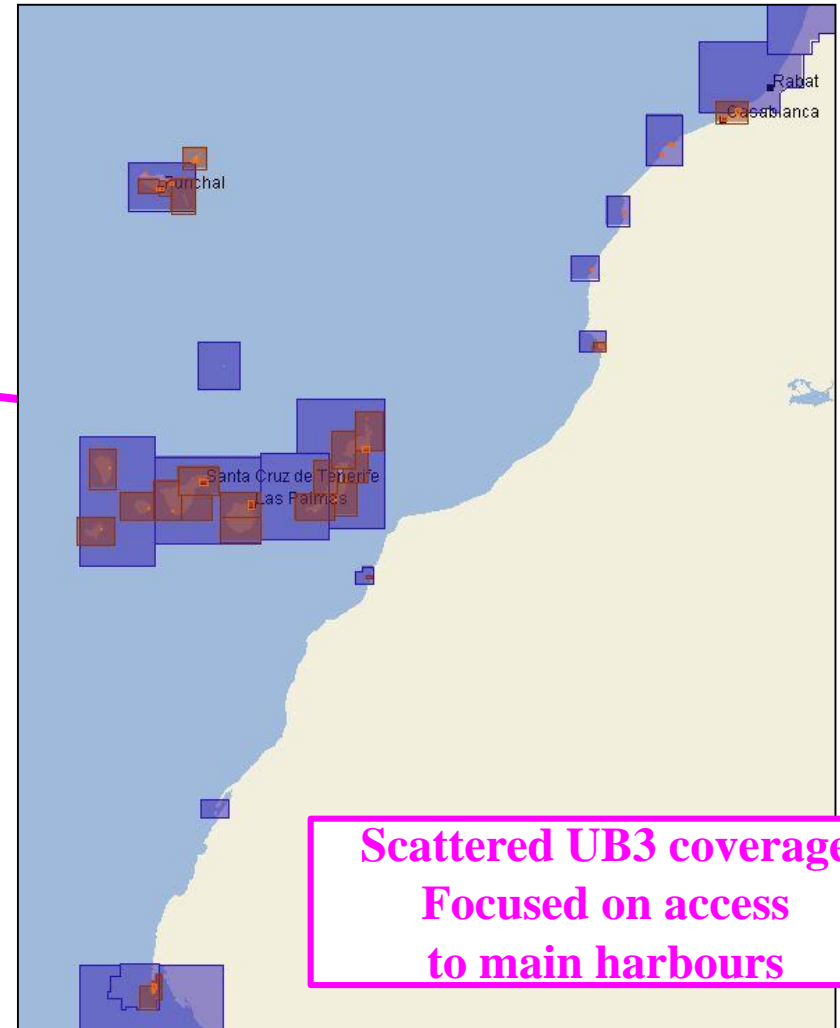
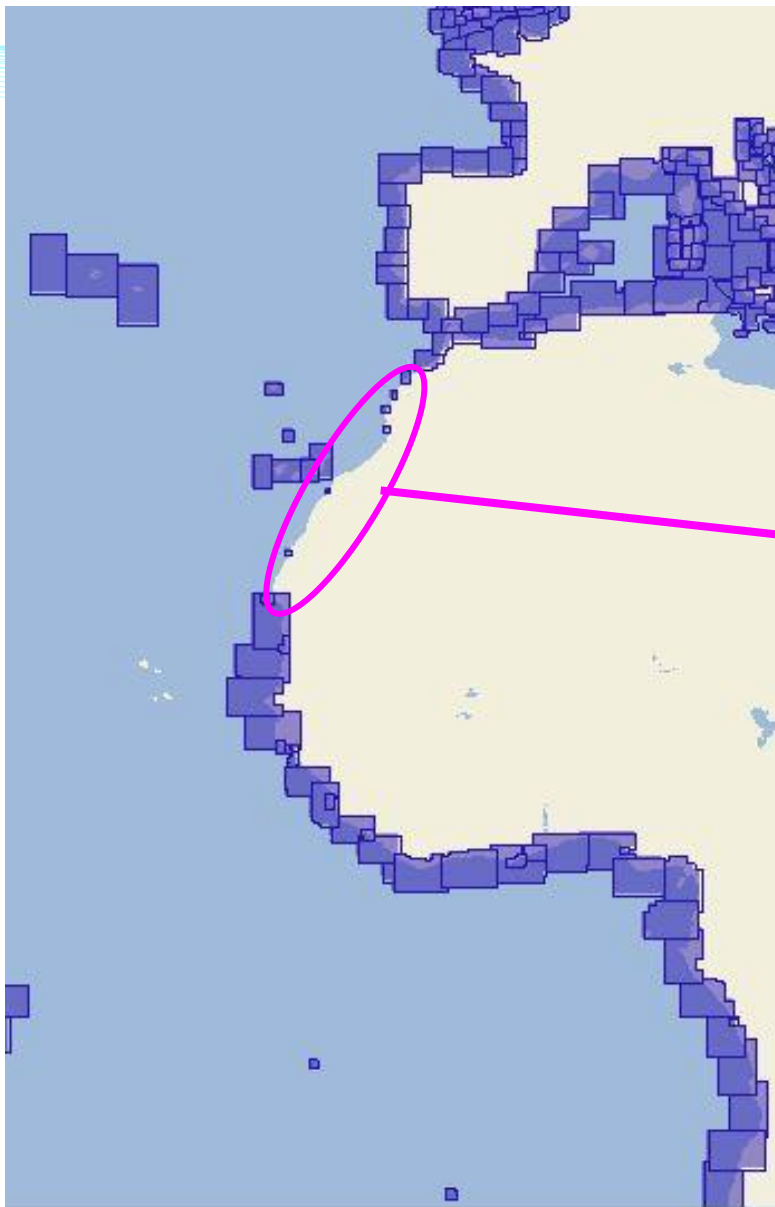
ENC UB 2 Status (General)



Slight overlap between
ES201080
FR200010

Source: Primar.org (2016)

ENC UB 3 Status (Coastal)

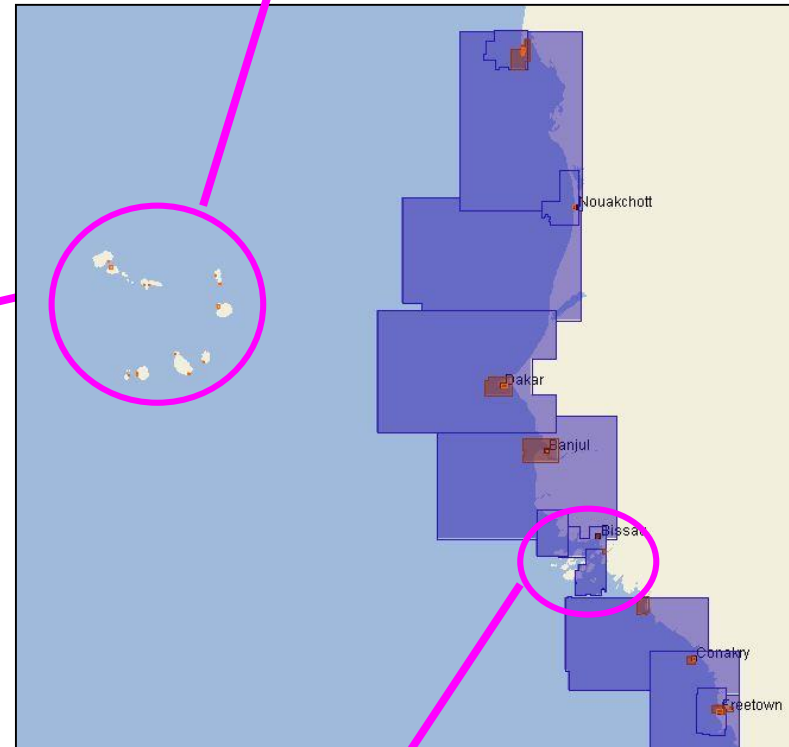


Source: Primar.org (2016)

ENC UB 3 Status (Coastal)



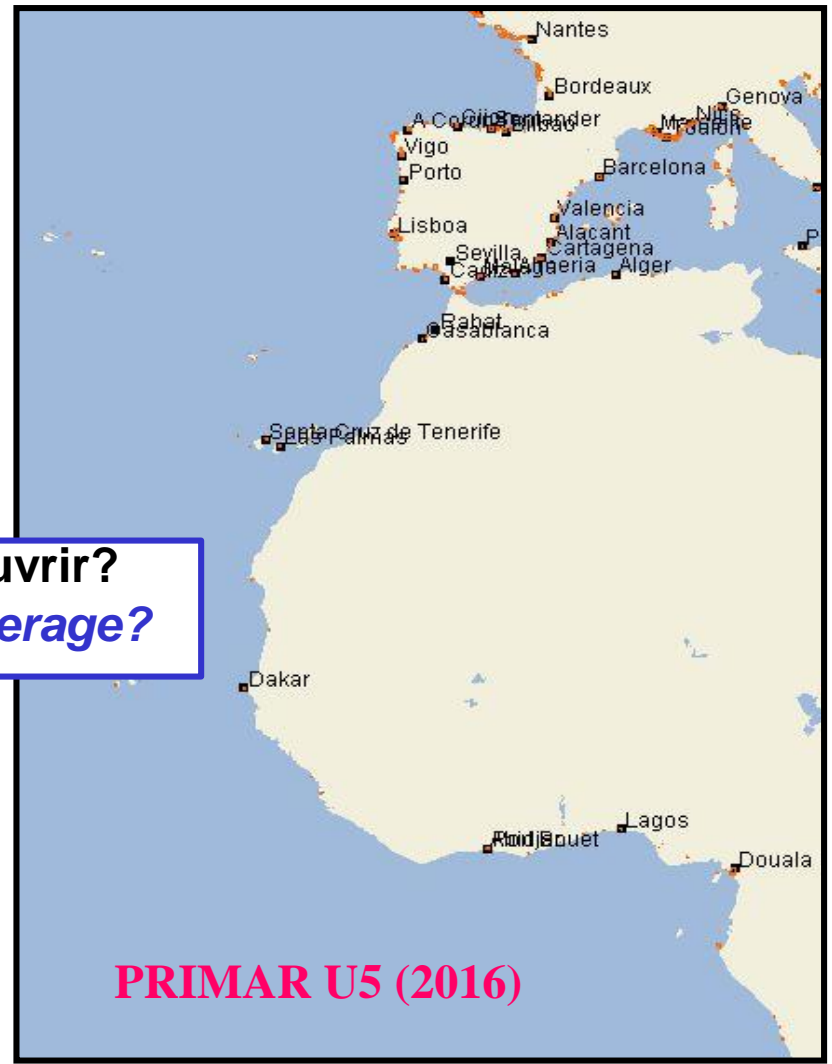
Lack of UB3 coverage
On Capo Verde



Missing cell on Guinea
Bissau (GB611)

Source: Primar.org (2016)

ENC Band 4/5





MesoAmerican Caribbean Sea Hydrographic Commission

MACHC Integrated Chart Committee



Enter address



Attribute Table

Cruise Ship Port Coverage Gaps (Worldwide)			
Location	Country	Long	Lat
San Salvador Island	Bahamas	74° 33' 19.731\" W	24° 3' 12.700\" N
Coco and Great Stirrup Cays	Bahamas	77° 55' 58.081\" W	25° 49' 52.676\" N
Gorda Cay	Bahamas	77° 32' 19.307\" W	26° 4' 41.250\" N
	Costa Rica	85° 42' 15.864\" W	10° 33' 48.516\" N
	Nicaragua	85° 53' 15.703\" W	11° 14' 58.901\" N
	Costa Rica	84° 10' 29.297\" W	9° 24' 57.217\" N



Actions required to EAtHC/ *Actions requises auprès de la CHAtO*

→ *Action CHAtO 14-XX (13-08)*

To the charting authorities in liaison with the coastal States to report to Region G ICC coordinator on NOAA's cruise ship ports gaps list.

Aux autorités cartographiques en liaison avec les Etats côtiers de rendre compte au coordinateur cartographique régional (Région G) au sujet de la liste des défauts de couverture des ports fréquentés par les bâtiments de croisière publiée par la NOAA.

→ *Action CHAtO 14-XX (13-13)*

To review the procedures for the transmission of survey data, in order to make sure that all relevant national organisations can access the survey data covering their national waters.

Revoir les procédures de transmission des données de sondage, afin de confirmer que l'ensemble des organismes nationaux concernées accèdent aux levés réalisés dans leurs eaux.



Actions required to EAtHC/ *Actions requises auprès de la CHAtO*

→ Action CHAtO 14-XX

INT chart producers to provide the regional charting coordinator with an update of the list of on-line chart catalogues, either directly or systematically when updating the Yearbook.

Aux États côtiers de fournir au coordinateur cartographique régional un exemplaire papier, numérique ou un accès en ligne à leur catalogue national.

→ Action CHAtO 14-XX

INT chart producers to provide Region G charting coordinator with a copy of their new INT charts (new publications and editions) iaw IRCC7 Decision3.

Aux producteurs cartographiques de fournir au Coordinateur cartographique régional un exemplaire de leur nouvelles cartes INT conformément à la décision 3 de l'IRCC7.

→ Action CHAtO 14-XX

Coastal States to update INT chart details (limits, scale, format) using INTToGIS web manager.

Aux États côtiers de mettre à jour les informations relatives aux cartes INT (emprise, échelle, format) via l'interface « web manager » du portail INTToGIS.



Actions required to EAtHC/ *Actions requises auprès de la CHAtO*

→ Action CHAtO 14-XX

Regional Charting Coordinator to submit the new INT proposals to the approval of the region G ICCWG.

Au Coordinateur cartographique régional de soumettre les dernières propositions de cartes INT à l'approbation du ICCWG de la région G.

→ Action CHAtO 14-XX

Regional G ICCWG to validate ENC schemes for UB1/2/3 and report back to the IHB

Au groupe de coordination cartographique régional de valider les couvertures des bandes d'usage ENC et de rendre compte au BHI.

→ Action CHAtO 14-XX (@13-16)

To submit to the region G ICCWG the priority list of large scale ENCs for region G not covering the main harbours for annual update.

Soumettre au region G ICCWG la liste dans l'ordre de priorité des principaux ports de la région G non encore couverts par des cartes électroniques de navigation (ENC) à grande échelle pour revue annuelle.