

REPUBLIC OF SOUTH AFRICA

HCA10-07.4Ah



SAN HYDROGRAPHIC OFFICE

NATIONAL REPORT

TO THE

IHO HYDROGRAPHIC COMMISSION ON ANTARCTICA (HCA)
10TH MEETING, BRITISH ANTARCTIC SURVEY (BAS), CAMBRIDGE,
UNITED KINGDOM

20 - 22 SEPTEMBER 2010

10TH HCA MEETING

REPORT BY THE REPUBLIC OF SOUTH AFRICA

1. SA Navy Hydrographic Office (SANHO)

The SA Hydrographic Service is a government-funded service and is part of the SA Navy. The major assets for the Hydrographic Service is as follows:

- a. One Hecla Class Hydrographic Survey Vessel namely **SAS PROTEA**. She carries on board two smaller survey launches that are deployed for shallow water surveys. There is an additional launch on a trailer and equipment that is used as a mobile survey unit (MSU).
- b. The Hydrographic Office, with the following principle functions: conduct hydrographic surveys, produce paper nautical charts, electronic navigational charts (ENC's) and publications including List of Lights and Radio Services, three volumes of Sailing Directions, maintain a tide gauge network and provide tidal information, collect GEBCO data, issue monthly Notices to Mariners, Radio Navigational Warnings and a Chart Depot service.
- c. The officers and ship's company of the survey vessel; and
- d. The staff members of the Hydrographic Office (SANHO) at Cape Town, in Tokai.

2. Oceanographic Activities

The South African geographical area of interest in Antarctica is concentrated in Dronning Maud Land and the South African Hydrographic Office has published paper chart SAN 2004 (INT 9056) – Approaches to Dronning Maud Land and an ENC, covering the region between 69° 10' 00"S to 71° 41' 00"S and 05° 30' 00"W to 00° 10' 00"W at a scale of 1:300 000. The standard land area (buff) has been substituted with a greyscale RADARSAT image supplied by the South African Satellite Application Centre (SAC). The main purpose of the chart is to cover the approaches to the area negotiated by scientific research vessels to land scientists and equipment for deployment at the South African Research Station SANAE IV. It is the intention to update this image every 2 years with a new RADARSAT image due to the constant movement of the ice shelf.

A new edition of SAN 2004 (INT 9056) was published in March 2009 based on a much-improved geo-referenced TerraSAR-X image of 2008 (*Figure 1*) and the corresponding ENC ZA300300 was released on 01 September 2010 (*Figure 2*).

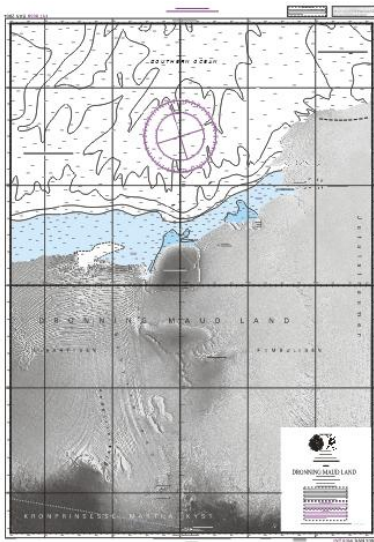


Figure 1. Paper Chart SAN 2004-INT 9056

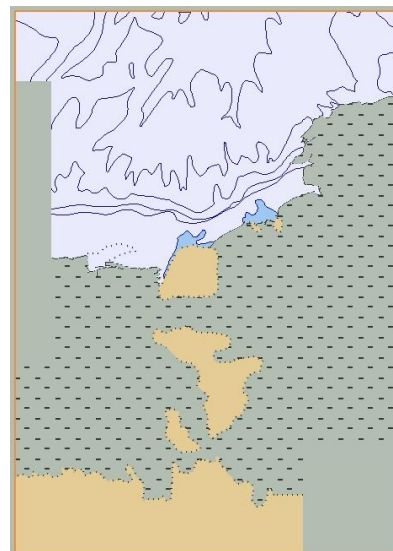


Figure 2. ZA300300

The bathymetric data within the area of the approaches to Dronning Maud Land is based on satellite derived altimetry and bathymetric contours from the Alfred-Wegener Institute, Germany and trackline bathymetric cruise data from the US National Geophysical Data Centre, Boulder, Colorado, USA (GEODAS) and the South African Department of Environment Affairs Directorate (DEA): Antarctica and Islands, Cape Town.

3. **M/V SA AGULHAS** (Figure 3).

The SA AGULHAS is the Research and Supply vessel used by DEA to transport equipment and supplies to the researchers at SANAE IV (Figure 4) and conducts research in the waters surrounding Antarctica. The ship services the South African National Antarctic Programme (SANAP) in research, which includes Antarctica, the Prince Edward Islands, Gough Island and parts of the Southern Ocean. The ship deploys once a year to Antarctica in the summer season and if their program allows it, gathers bathymetry in areas on request as specified by the SA Hydrographic Office. A replacement supply vessel is in the final stages of construction.



Figure 3. M/V SA AGULHAS ¹



Figure 4. SANAE IV

¹ All images courtesy of SA Department of Environment Affairs Directorate: Antarctica and Islands, Cape Town

4. Charts and Publications

a. Charts

International (INT) paper chart and ENC. South Africa is the co-ordinator for international charting within Region H but also the producer nation of a single paper chart and an ENC within charting Region M, which is based on the WGS 84 ellipsoid.

Region M:

INT Paper Chart No	SAN No	Title
9056	2004	Antarctica. Approaches to Dronning Maud Land

ENC

ZA300300, based on SAN 2004, was released for commercial use on 1 Sep 2010.

b. Publications

South Africa has since 2001 published, in its South African Sailing Directions Vol III (SAN HO-23) Chapter 10, information on the Antarctic Region. The scope of this chapter encompasses that part of NAVAREA VII south of the 60° parallel and the Antarctic Coast between 20°W and 80°E. It consists of seven sections that provide essential information on the regulations/Antarctic Treaty, aircraft operations, general scientific and environmental information, natural conditions, sea ice, navigation in ice and a section on Bouvet Island (Bouvetøya).

5. Maritime Safety Information (MSI)

NAVAREA VII – Co-ordinator

The Co-ordinator of NAVAREA VII in association with the South African Meteorological Service currently transmits all the necessary NAVAREA VII and METAREA VII (SafetyNET) Weather Information and Shipping Safety messages via the IOR and AOR-E satellites as far south as the Antarctic coast. These messages are backed up by HF transmissions from Cape Town Radio. No NAVAREA VII messages were transmitted during 2010 for the Antarctic Region (Sea Area A4) thus far, but it is well known for icebergs to be sighted well north of the 60° parallel during the summer season.

6. Capacity Building

Since the summer season of 2004/2005, the MV AGULHAS discharged cargo at the Akta-bukta in the vicinity of the German research station Neumayer. Due to the ever-increasing height of the ice-shelf in the vicinity of the abandoned SANAE III (E-Base), it has become **extremely dangerous** to back-load and discharge cargo from the +32 metre high and very unstable ice-shelf. South Africa and Germany has exchanged source information in preparation of their published adjoining paper charts INT 9057, INT 9055 and ENCs. This has enhanced the existing co-operation between South Africa and Germany.



Figure 5 Offloading SANAE III



Figure 6. Offloading Akta-bukta

South Africa will welcome any additional survey data including satellite imagery (geo-referenced) within their charting area from neighbouring countries to update chart SAN 2004 (INT 9056) and ENC ZA300300.

7. **IHO Special Publication C-55**

The South African Hydrographic Office acknowledges the importance of the constant review of C-55 to improve hydrographic services along the routes in the Antarctic. A full status assessment on the Antarctic Region was carried out in 2004 with no change emanating over the past years that will have any significant impact on the IHO database, at this time.

----- END -----

September 2010