

# HYDROGRAPHIC COMMISSION ON ANTARCTICA

HCA10-INF11



***IAATO 21<sup>st</sup> Annual Meeting  
Turin***

# ***IAATO request for simple access to National charts of Antarctica***

***Possible interim options to be accessed from links within IHO website:***

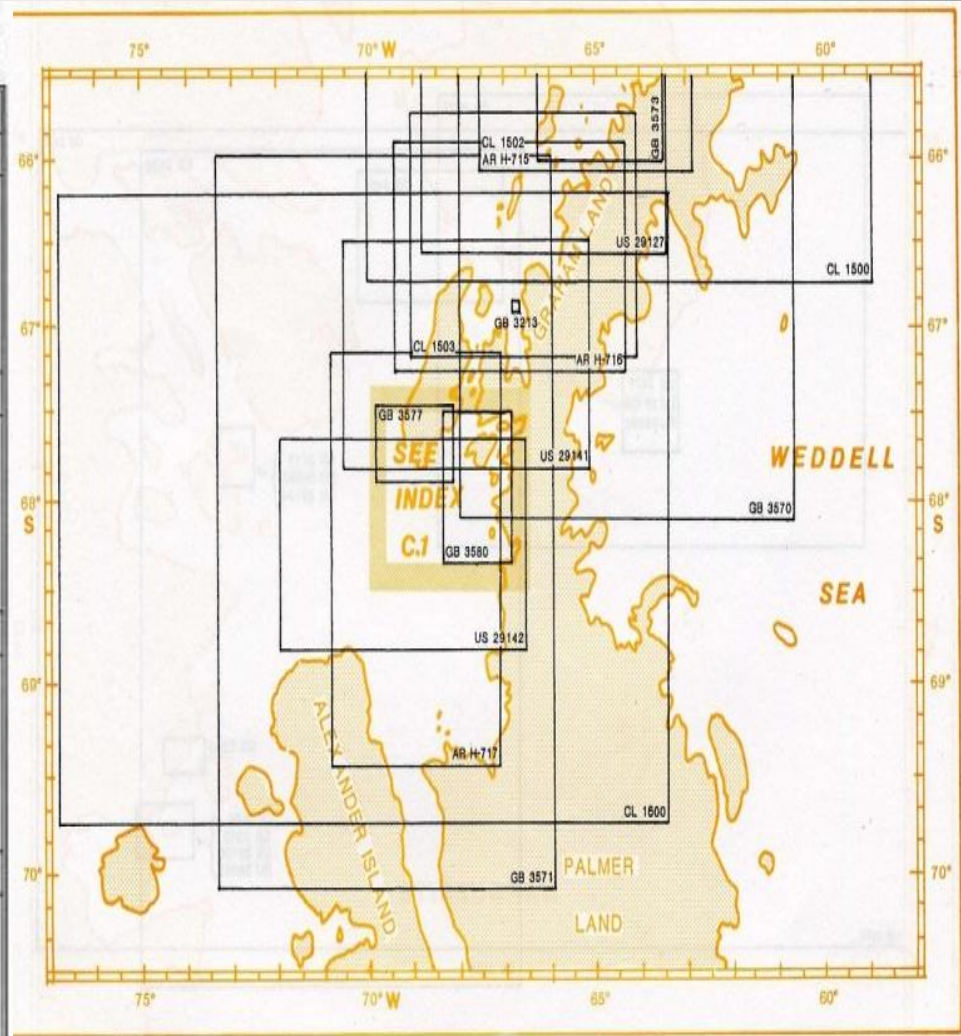
- ❖ ***Updated version of cancelled IHO publication S-59***
- ❖ ***Extracts from the chart catalogue of producer Nations***
- ❖ ***Link to producer Nation website***

# Updated version of cancelled S-59 publication

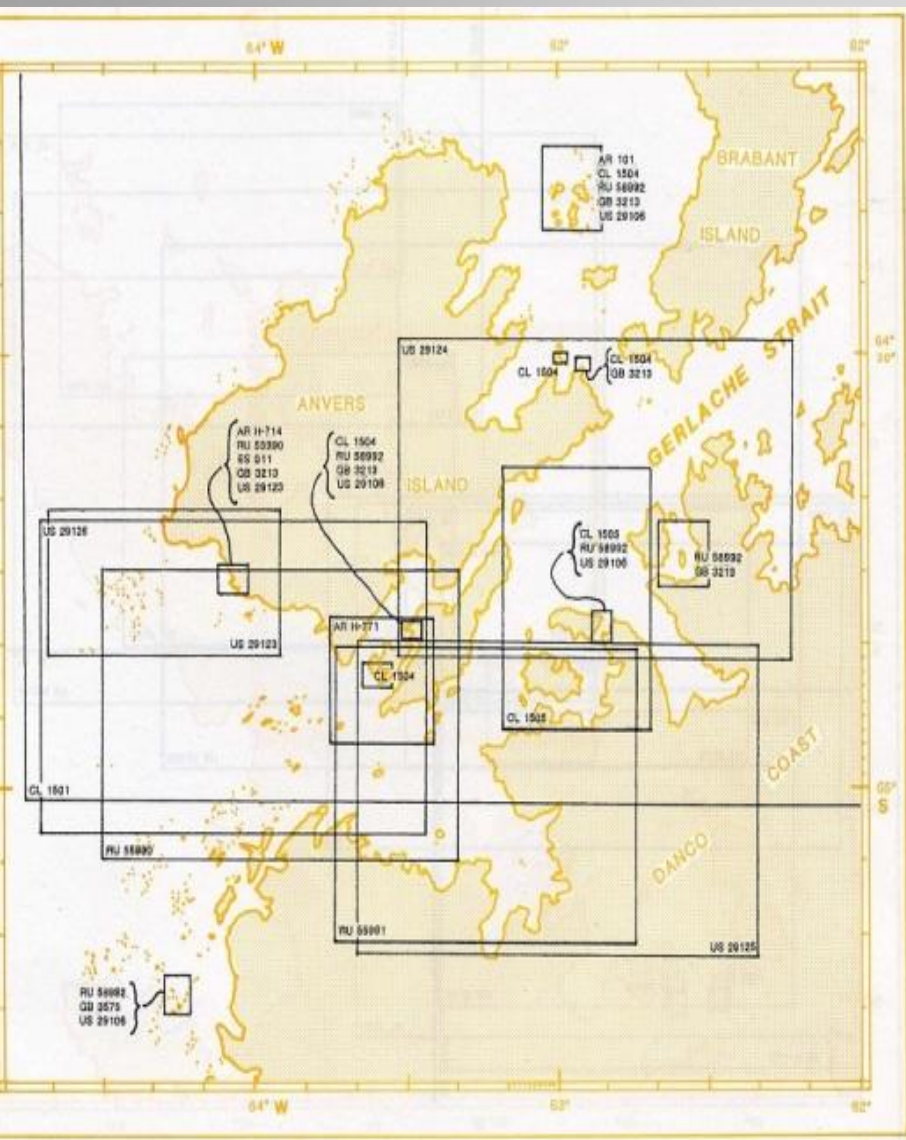
ANTARCTIC PENINSULA,  
GRAHAM LAND – PALMER LAND

PENINSULE ANTARCTIQUE,  
TERRE DE GRAHAM – TERRE DE PALMER

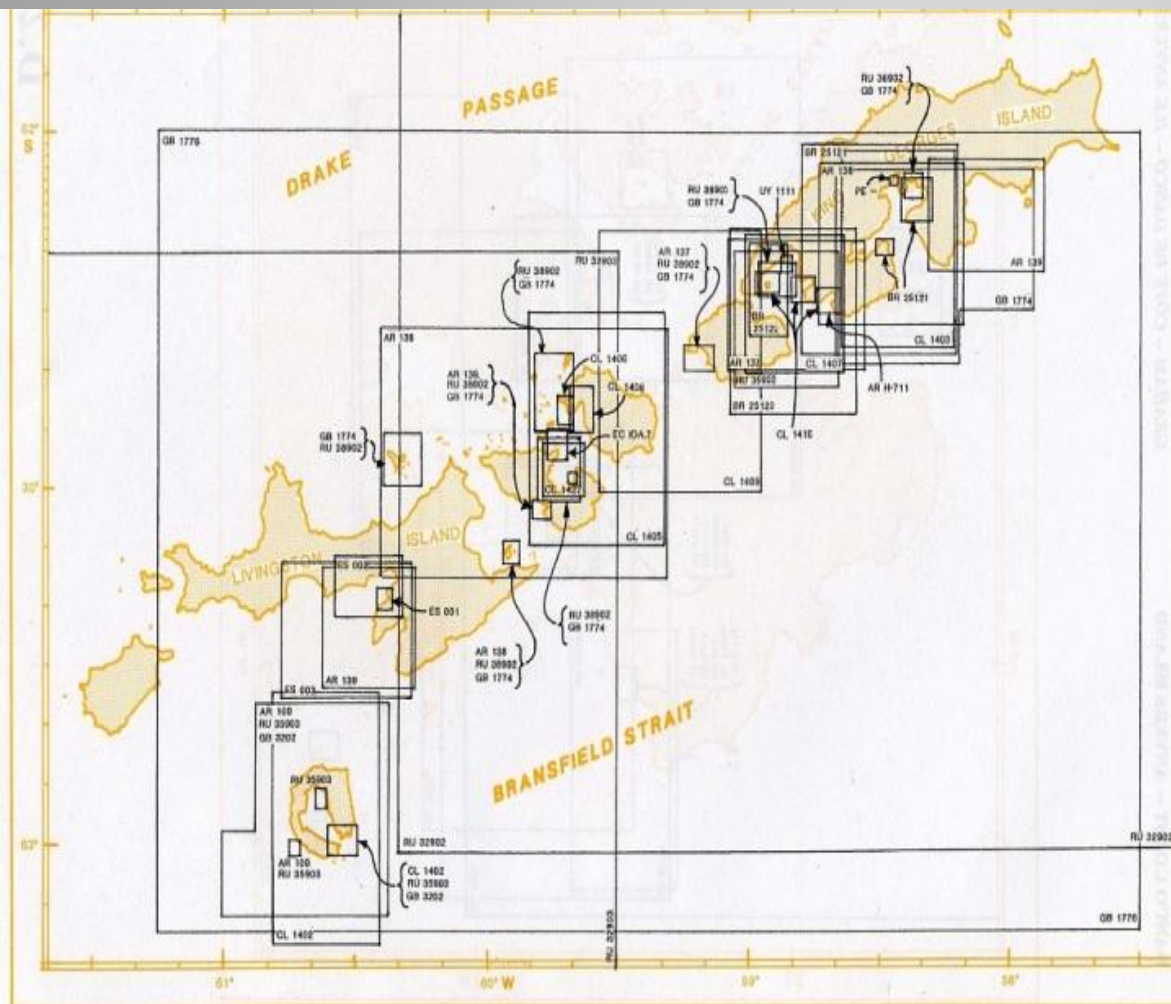
National No.	Title/Titre	Scale/Echelle	N. Edition	INT No.
<b>ARGENTINA/ARGENTINE (AR)</b>				
H-715	Canal Grandidier y estrechos de Bismark y Pendleton .....	1:200 000	1969	9159
H-716	Estrecho Pendleton y Matha, bahia Lallemand .....	1:200 000	1981	9160, 9161 9162
H-717	Bahia Margarita .....	1:250 000	1969	9161, 9162, 9163, 9164
<b>CHILE/CHILI (CL)</b>				
1500	Isla Trinidad a estrecho Matha .....	1:500 00	1963 (Corr. to 1972)	9159
1502	Canal Grandidier .....	1:200 000	1962 (Corr. to 1969)	9160, 9161, 9162
1503	Estrecho Pendleton a estrecho Matha .....	1:200 000	1963	9172
1600	Estrecho Matha a isla Rothschild .....	1:500 000	1963	9172
<b>UNITED KINGDOM/ROYAUME-UNI (GB)</b>				
3213	Detalle island .....	1:7.500	08/1973	
3570	Brabant island to Adelaide island .....	1:500 000	07/1991	9171
3571	Lavoisier island to Alexander island .....	1:500 000	09/1991	9172
3573	Grandidier channel .....	1:200 000	12/1987	9159
3577	Adelaide island, south western approaches .....	1:75 000	03/1995	9162, 9163
	Plan: Adelaide anchorage .....	1:30 000		
3580	Rothera point to Neny island .....	1:100 000	09/1995	9161, 9163
<b>USA (US)</b>				
29127	Matha strait to Argentine islands .....	1:200 000	07/1976	9159, 9160
29141	Square bay to Matha strait including Adelaide island .....	1:200 000	08/1988	9160, 9161 9162
29142	Alexander island to Square bay including Marguerite bay .....	1:200 000	06/1983	9163, 9164







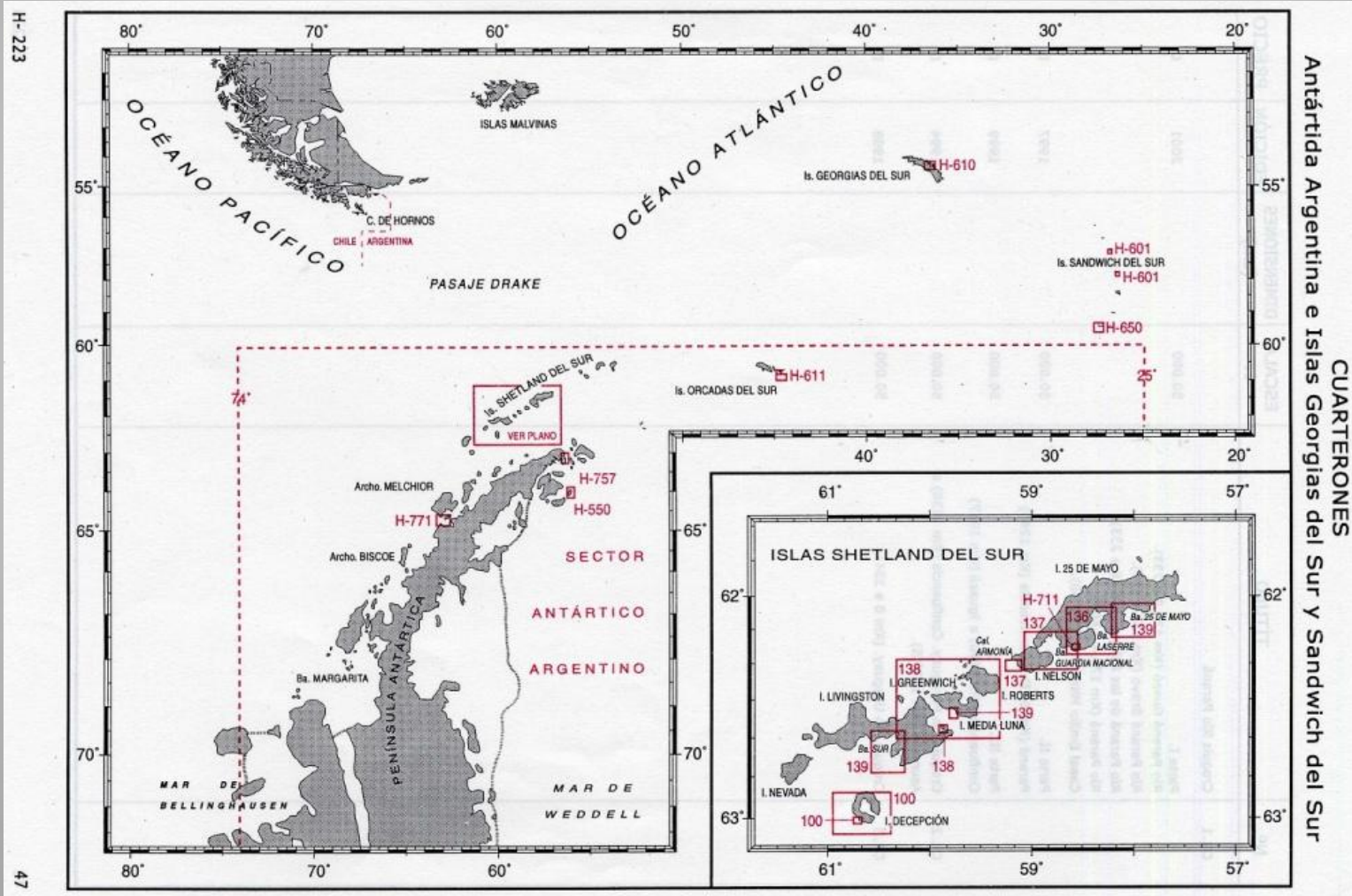
National No.	Title/Titre	Scale/Echelle	N.Edition	INT No.
<b>ARGENTINA/ARGENTINE (AR)</b>				
101	Archipiélago Melchior y alrededores	1:20 000	1957	
H-714 <sup>(1) (2)</sup>	Puerto Arturo	1:12 500	1990	9105, 9156
H-771	Canales Peltier y Neumayer	1:30 000	1964	
<b>CHILE/CHILI (CL)</b>				
1501 <sup>(1) (2)</sup>	Estrecho de Gerlache	1:200 000	1963 (Corr. to 1972)	
1504 <sup>(1)</sup>	Archipiélago Melchior	1:20 000	1955 (Corr. to 1969)	9101, 9158
	Bahía South	1:30 000		
	Seno Discovery	1:20 000		
	Puertos Angamos y Lockroy	1:10 000		
	Caleta Hackapike	1:15 000		
1505	Bahía Paraíso y Canales de Acceso	1:50 000	1951	9103, 9104
	Caleta Gloria	1:4 000		
<b>RUSSIAN FEDERATION/FEDERATION DE RUSSIE (RU)</b>				
55990	Bismarck strait	1:50 000	1993	9104, 9105
	Plan: Arthur harbour	1:12 500		
55991	Flandres bay and approaches	1:50 000	1986	9104
58992 <sup>(2)</sup>	Melchior islands	1:30 000	1985	9106, 9158
	Port Lockroy	1:10 000		
	Waterboat point	1:7 500		
	Argentine islands	1:15 000		
	Prospect point	1:50 000		
<b>SPAIN/ESPAGNE (ES)</b>				
011 ANT	Puerto Arturo	1:5 000	10/1991	9105



National No.	Title/Titre	Scale/Echelle	N. Edition	INT No.
<b>ARGENTINA/ARGENTINE (AR)</b>				
100	Isla Decepción Plan: Rada Pingüinera	1:25 000 1:4 000	1968	9120
136	Bahía Lasserre	1:30 000	1957	9125
137	Bahía Guardia Nacional Caleta Armonía	1:25 000 1:20 000	1957	9124
138	Estrecho Nelson, Espora y Mac Farlane Isla Media Luna	1:50 000 1:10 000	1957	9121
139	Cuarterones en las islas Shetland del Sur Plans: Isla Greenwich, puerto Yankee Isla 25 de Mayo, bahía 25 de Mayo Isla Livingston, bahías Sur y Falsa	1:10 000 1:50 000 1:30 000	1957	9121
H-711	Islas Shetland del Sur, isla 25 de Mayo, caleta Potter	1:10 000	1984	9123, 9124, 9151
<b>BRAZIL/BRESIL (BR)</b>				
25121	Baía do Almirantado Plans: Enseada Martel (Plano A) Estação Commandante Ferraz/ Fundeadouro Visca (Plano B)	1:40 000 1:20 000 1:5 000	10/1992	9125
25122	Baía Maxwell Plan: Baía Edgell e Enseada Ardley	1:40 000 1:20 000	9/1994	9123, 9124
<b>CHILE/CHILI (CL)</b>				
1402	Isla Decepción Bahía Yankee Caleta Balleneros	1:50 000 1:10 000 1:8 000	1953	9120
1403	Bahía Almirantazgo	1:50 000	1961 (Corr. to 1969)	9125
1405	Estrecho Inglés y paso Lautaro	1:40 000	1963 (Corr. to 1975)	
1406	Caleta Copper Mine	1:6 000	1958	
1407	Bahía Fildes	1:30 000	1975	9123, 9124
1408	Caleta Nailon	1:8 000	1975	
1409	Estrecho Nelson	1:40 000	1978	9123, 9124
1410	Caletas en Bahía Fildes Plans: Caleta Potter Caleta Ardley Caleta Marian	1:10 000 1:10 000 1:10 000	1980	
1427	Bahía Chile, Puerto Soberanía y Ensenadas Rojas e Iquique Plans: Bahía Chile Puerto Soberanía y Ensenadas Rojas e Iquique	1:50 000 1:20 000 1:50 000	1991	9122

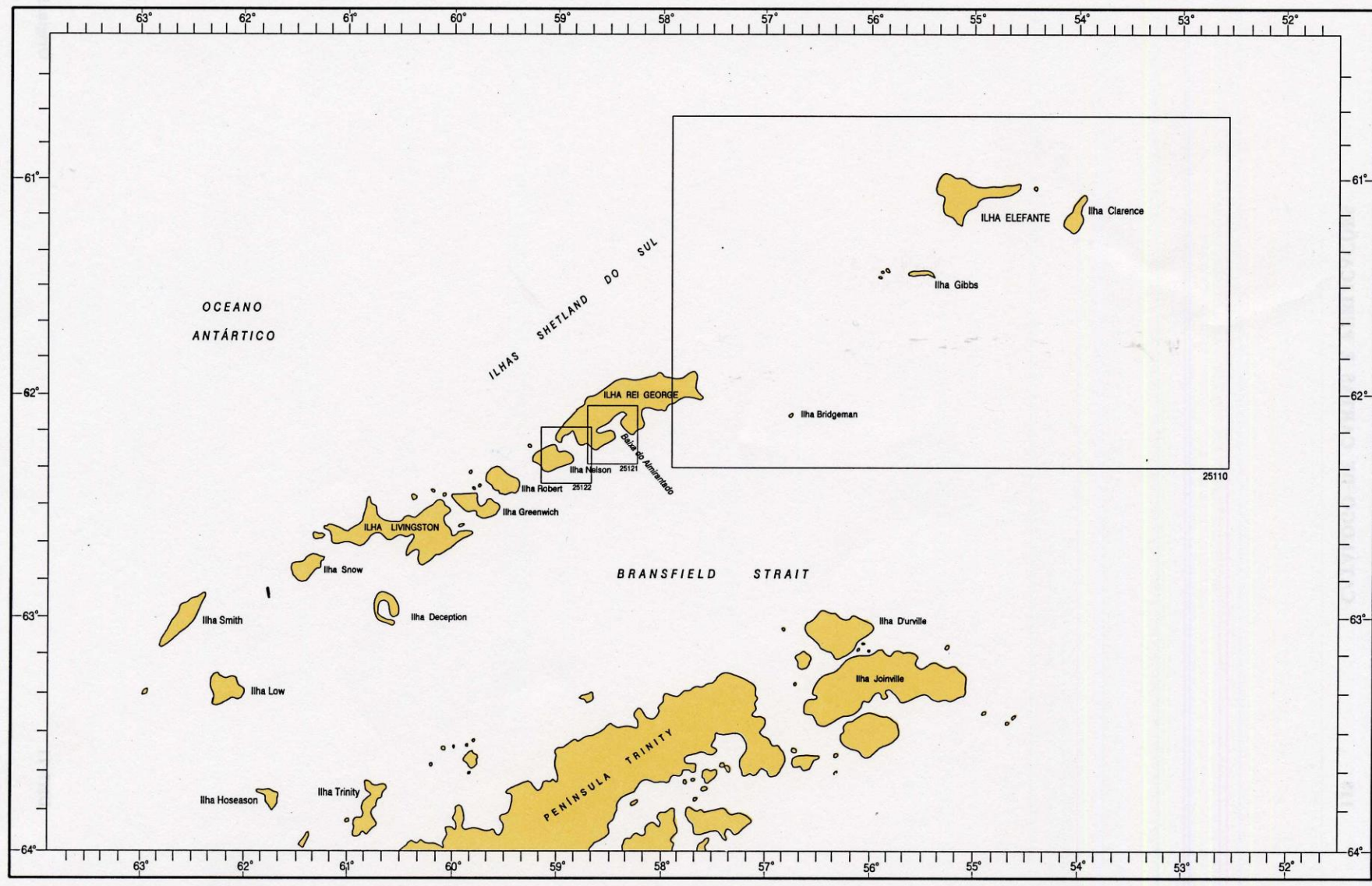


# Extracts from the chart catalogue of Producer Nations











***Link to producer Nation website:***

***www.shoa.cl***      ***www.ukho.gov.uk***

***www.shom.fr***      ***www.statkart.no***

***www.mar.mil.br***      ***www.linz.govt.nz***

***www.hidro.gov.ar*** ***www.hydro.gov.au***

***www.dhn.mil.pe***      ***Etc, etc, etc.....***