



Hydrographic Commission on Antarctica

Report

to

HCA12, October 2012

AUSTRALIA

Commodore Rod Nairn

Overview

★ Overview

- Australian focus has been primarily on completion of home waters ENC, 844 ENC cells published including 8 in the Antarctic.
- 22 ENCs (including 12 in Antarctic) remain to be published to complete Aus Charting Area Coverage of approximately 870 cells.
- These other remaining cells are plans to meet recreational boating needs and all will be complete by the end of 2013.
- Further new ENCs will continue to be produced after that to improve charting coverage.



Charting

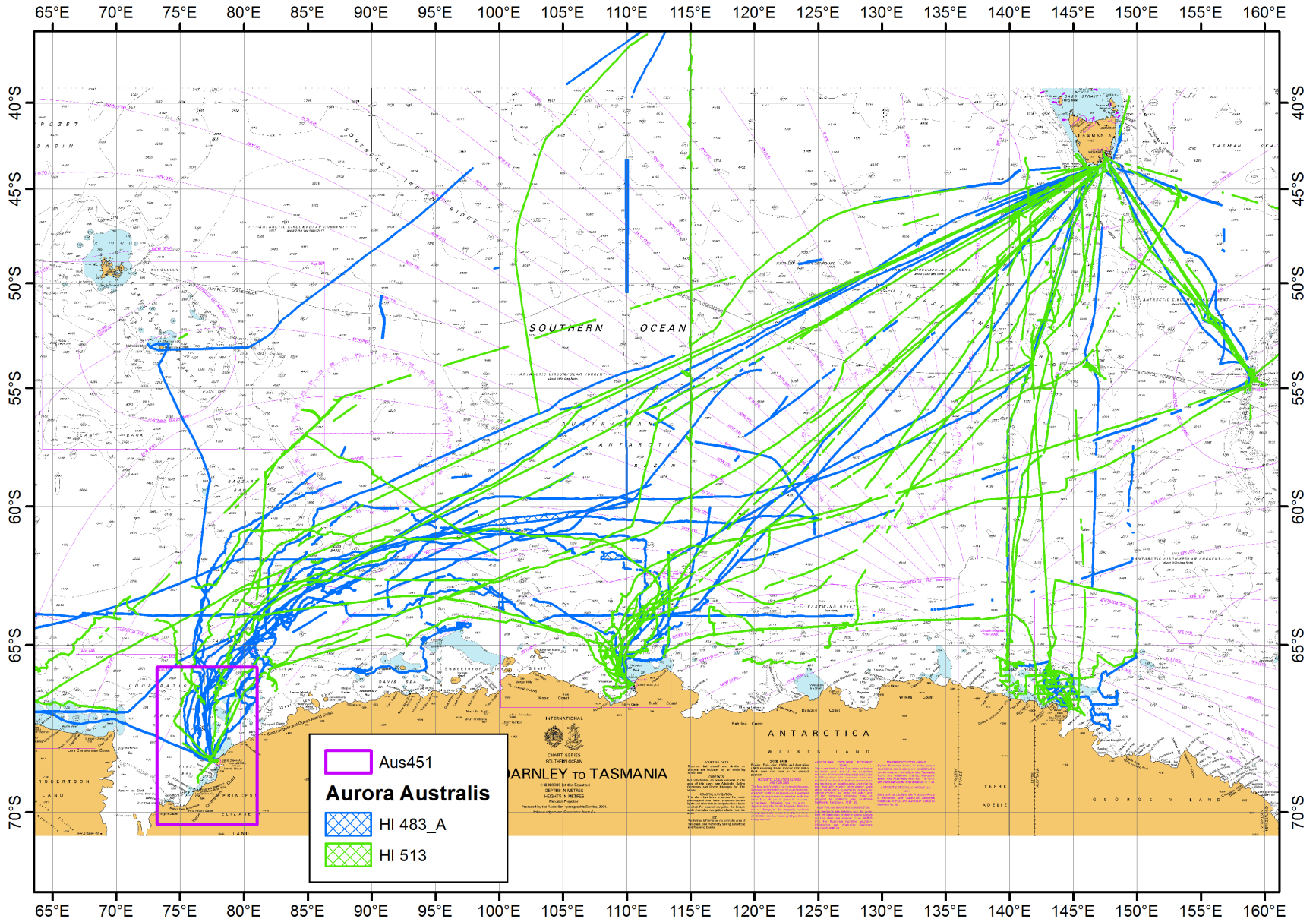
- New Chart Aus448 (INT 9038) Kirby Island to Magnet Bay Scale - 1:500,000 at lat 68 published 16 Dec 2011
- 14 New Charts/new editions (including 2 INT Charts) in the Antarctic are scheduled to be produced over the next 5 years (see table) some of these may be made available as INT charts – subject to HCA discussions

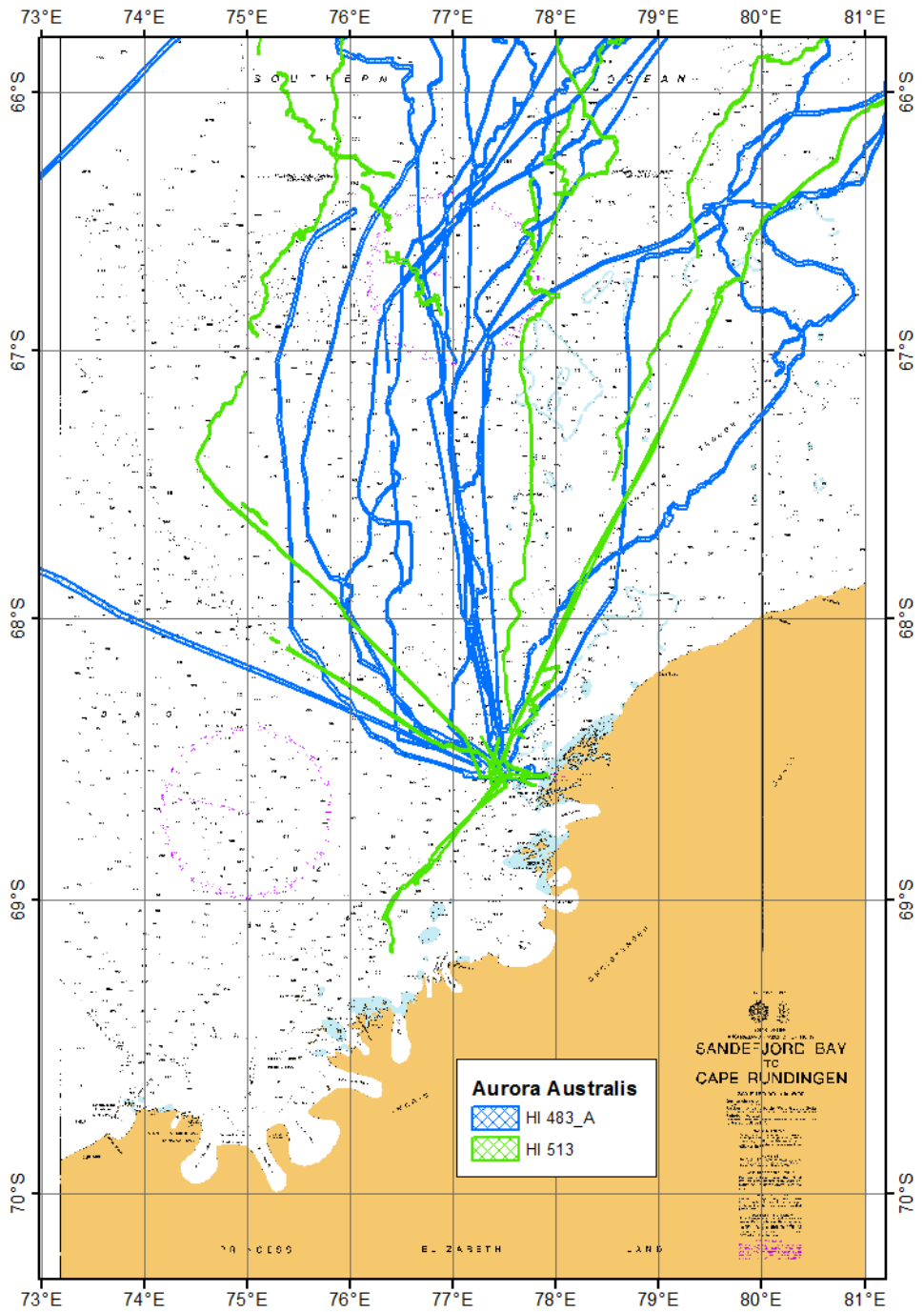


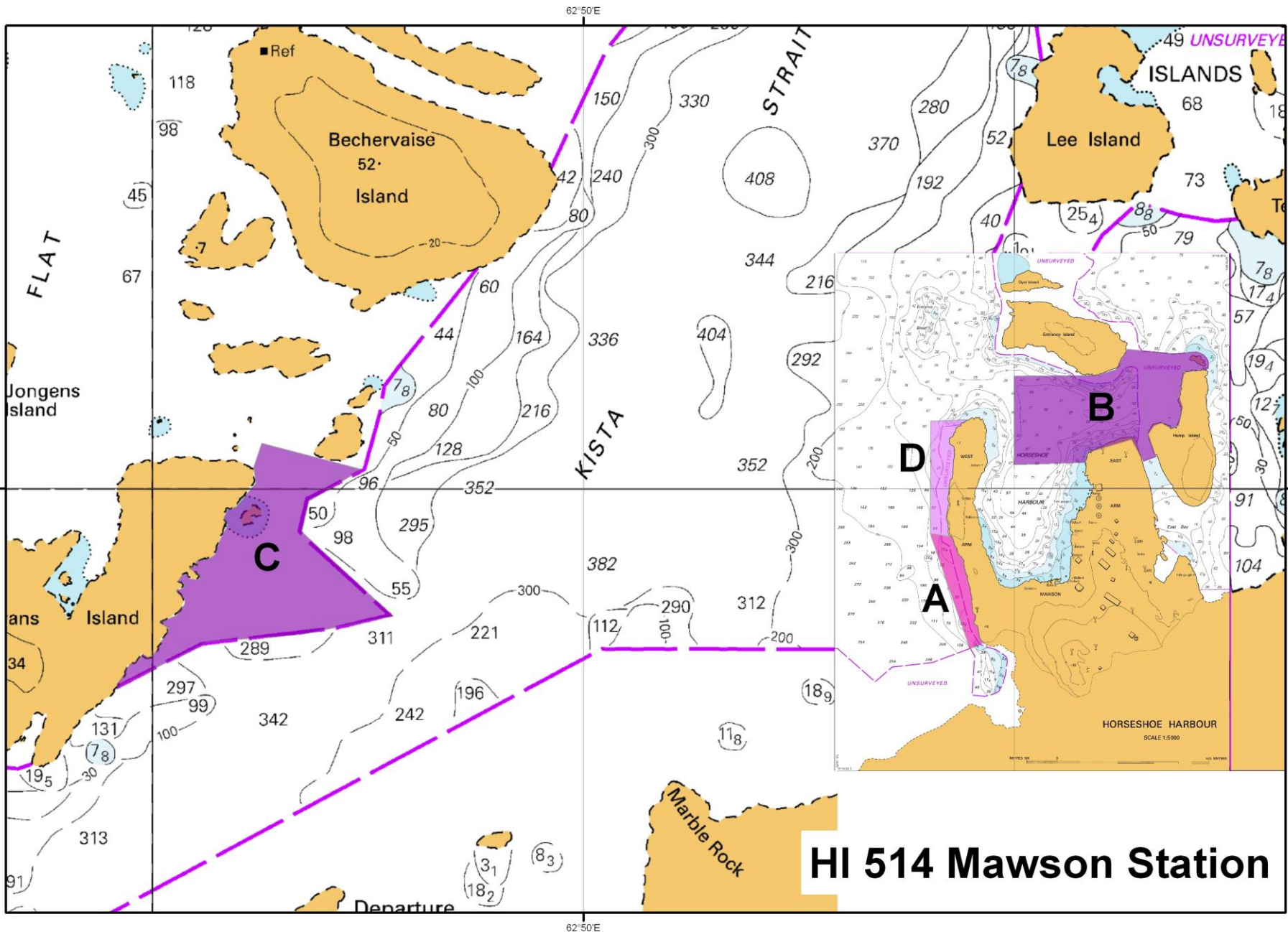
Survey Activities 2011-12

- ✦ Aurora Australis Passage sounding processing (1996-2012)
 - (done with deployed team onboard ship due to unique collection system/software)
- ✦ Multibeam Survey at Mawson Station
- ✦ Commonwealth Bay Survey – Iced out









HI 514 Mawson Station

Overlapping ENC outside Region M

- HCA Region M has a northern limit of 60 deg South – Region M ENC Producers should limit their production to 60DegS unless they have coordinated their production with the ENC Coordinator of the adjacent charting region.





70°E 80°E 90°E 100°E 110°E 120°E

AU160060 AU160090 AU160120

Chart info

Name
 Description
 Type Plotting Sheet
 Projection Mercator
 Chart datum
 Depth units
 Chart scale
 View Scale 1:25902073

Query

50° 9.952' S 176° 1.711' W

ID	Class	Geom.	Cell
646	DEPART	area	S57NZ114612
311	DEPOINT	line	S57NZ114612
241	OFFCONT	line	S57NZ114612

Move to Use filter

SORDAT 19990403
 SORDNO NZ,NZ_graph,Chart NZ14612
 VALDCO 2000

Display

- Overlays
- S63
- S67
- AU160060 ED2**
- AU160090 ED2**
- AU160120 ED2**
- HCRP
- A260052 P1
- AU54060 P1
- AU54060 P4
- AU54070 P1
- AU54070 P2
- AU54070 P3
- AU54070 P4
- AU54071 P3
- AU54071 P4
- AU54074
- NZ14060
- AU54603
- AU54708
- AU54709
- AU54710
- AU54714
- A04603P
- A04603J
- A04703P
- A04703J
- A04714P

60 deg 00.0 min S
 60 deg 18.0 min E



RU1A2K00

RU1B0PFO

Southern Ocean Limit

Cut back to here

80°E 90°E 100°E 110°E 120°E

70°E 80°E 90°E 100°E 110°E 120°E

Issues that HCA should act upon

- HCA Region M has a northern limit of 60 deg South – Region M ENC Producers should limit their production to 60DegS unless they have coordinated their production with the ENC Coordinator of the adjacent charting region.
- Request that HCA Members are urged to supply their relevant data to the Int Chart producer to enable best chart production.
- Consider a new approach scale INT chart for the Larsemann Hills region. Southern end of Int 9030. Where there are Scientific stations of China, India, Russia and Australia.

