



**INTERNATIONAL HYDROGRAPHIC ORGANIZATION
HYDROGRAPHIC COMMITTEE ON ANTARCTICA – HCA
12th MEETING – MONTEVIDEO, URUGUAY
OCTOBER 09 – 13, 2012**

**REPORT PREPARED BY THE HYDROGRAPHIC AND
OCEANOGRAPHIC SERVICE
OF THE CHILEAN NAVY (SHOA)**

SERVICIO HIDROGRÁFICO Y OCEANOGRÁFICO DE LA ARMADA DE CHILE

Siempre queda mucho por hacer...

TABLE OF CONTENTS

- **HYDROGRAPHIC ACTIVITIES**
- **CHARTS AND PUBLICATIONS**
- **MARITIME SAFETY INFORMATION**
- **OCEANOGRAPHIC ACTIVITIES**
- **OTHER ACTIVITIES**



Hydrographic activities

- This year Antarctic hydrographic activities were developed by SHOA from February 11th to March 14nd, 2012, on board Auxiliary Tug Fleet ATF “Lautaro” (see picture) for surveying the area from Useful Islet to Wednesday Island, Gerlache Strait, surveying phase 3 of 4, affecting national charts 15350 (Int. 9104), 15351 and 15352 which surveying activities are depicted below.
- Additionally, maintaining tasks to sea level and environmental stations at “Prat” and “O’Higgins” bases were carried out, considering also measurements of geodetic vertexes, stereoscopic points for photogrammetric support and updates for the Antarctic Sailing Directions.



ATF “LAUTARO”

INT. N°	SCALE 1:	YEARS OF SURVEYS
9104	50.000	2010 -2011 - 2012 - 2013
9103 (UKHO data)	50.000	2014 - 2015
9151	200.000	2016 - 2017
9157	150.000	2018 - 2019 - 2020



Cartographic scheme

Green: Published.

INT 9102 SHOA 14511

INT 9122 SHOA 14231

INT 9123 SHOA 14211

INT 9124 SHOA 14212

INT 9155 SHOA 14400

Orange: In process (phase 2/3).

INT 9104 SHOA 15350

/ 51 – 52

Blue: Planned.

INT 9103 (UKHO data)

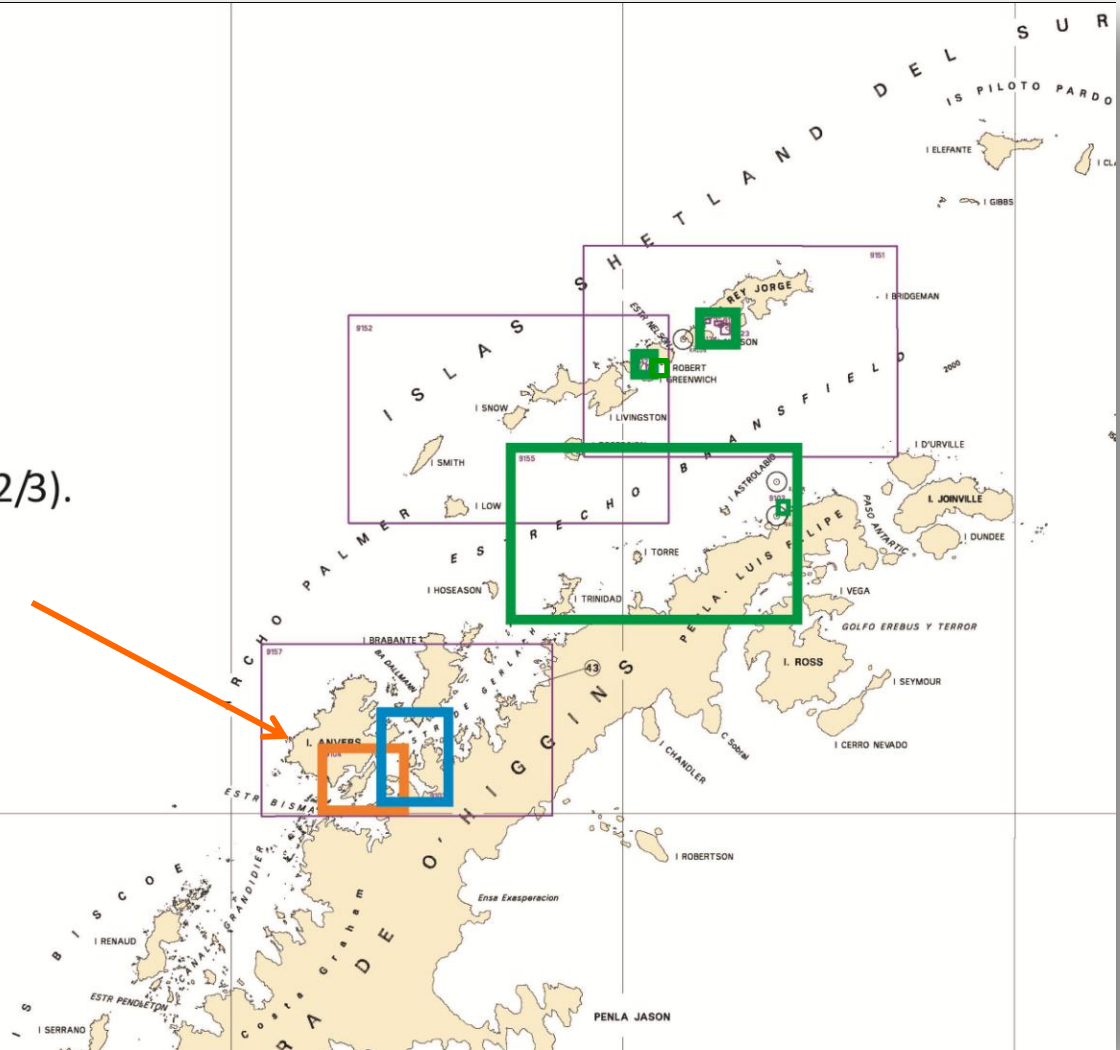


TABLE OF CONTENTS

- **HYDROGRAPHIC ACTIVITIES**
- **CHARTS AND PUBLICATIONS**



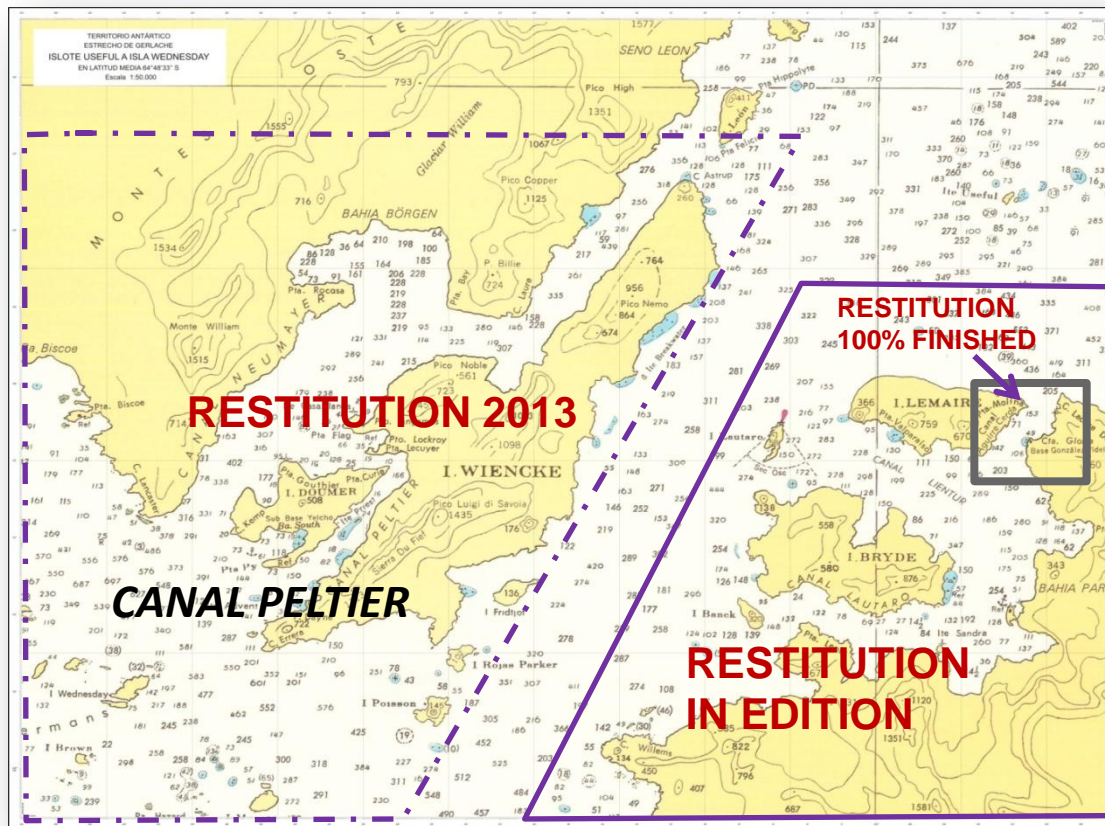
INTERNATIONAL CHARTS






INT No. 9104



Status of photogrammetric data for National 15350 (INT No. 9104)

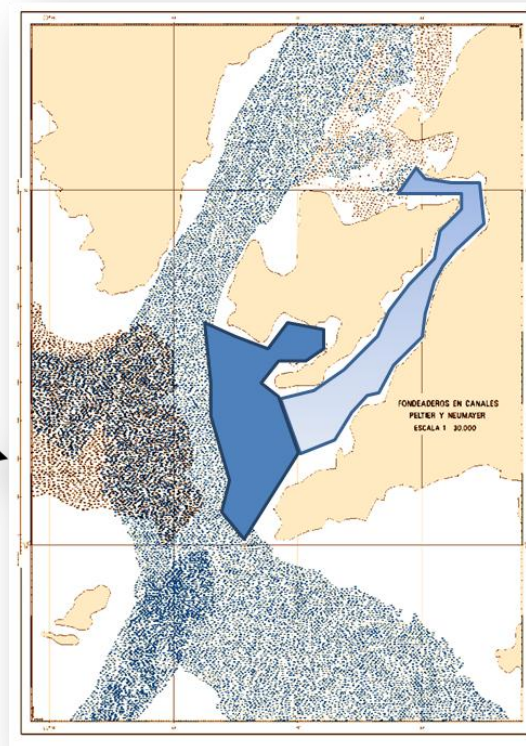
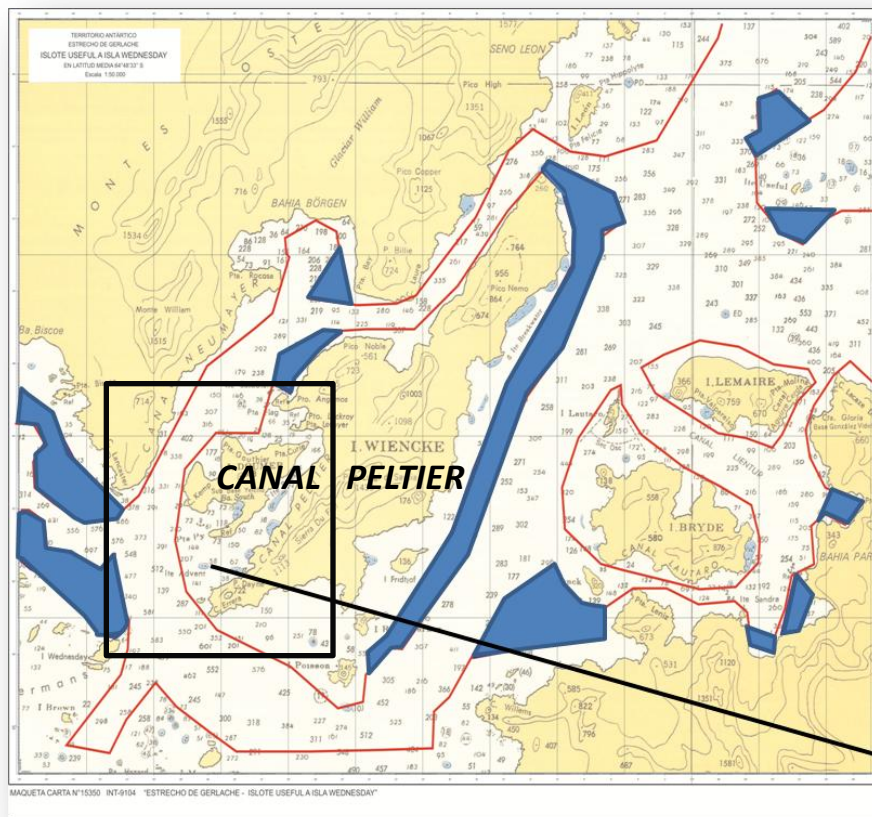





CALETA GLORIA

-  Photogrammetric work accomplished 100%
-  Photogrammetric work to be accomplished Dec. 2012 50%
-  Photogrammetric work to be accomplished 2013



Areas of collected bathymetric data for National 15350 (INT No. 9104)



-  Bathymetric data from SHOA
-  Bathymetric data from UKHO
-  Bathymetric survey to be accomplished 2012-2013



NATIONAL CHARTS



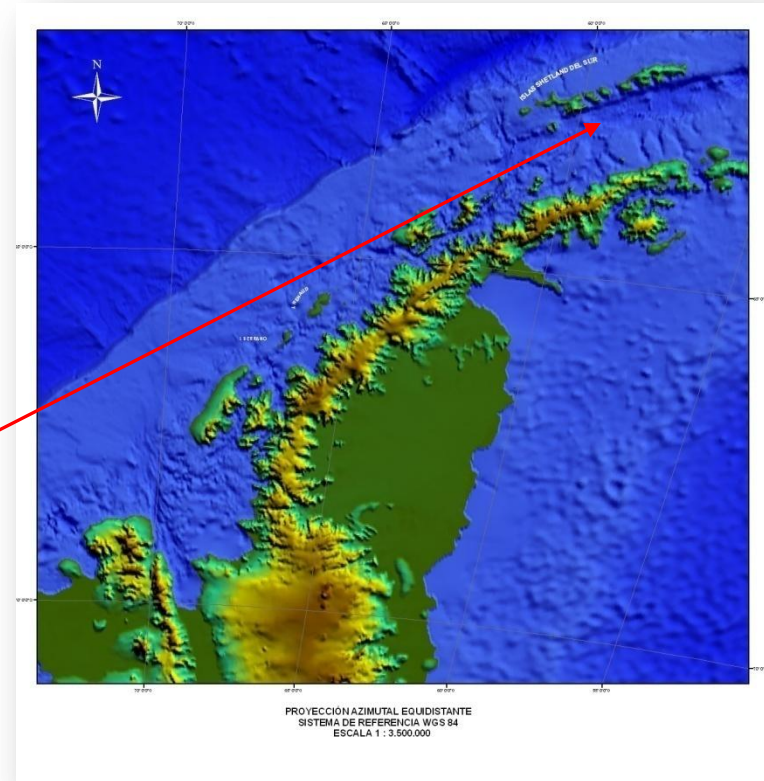
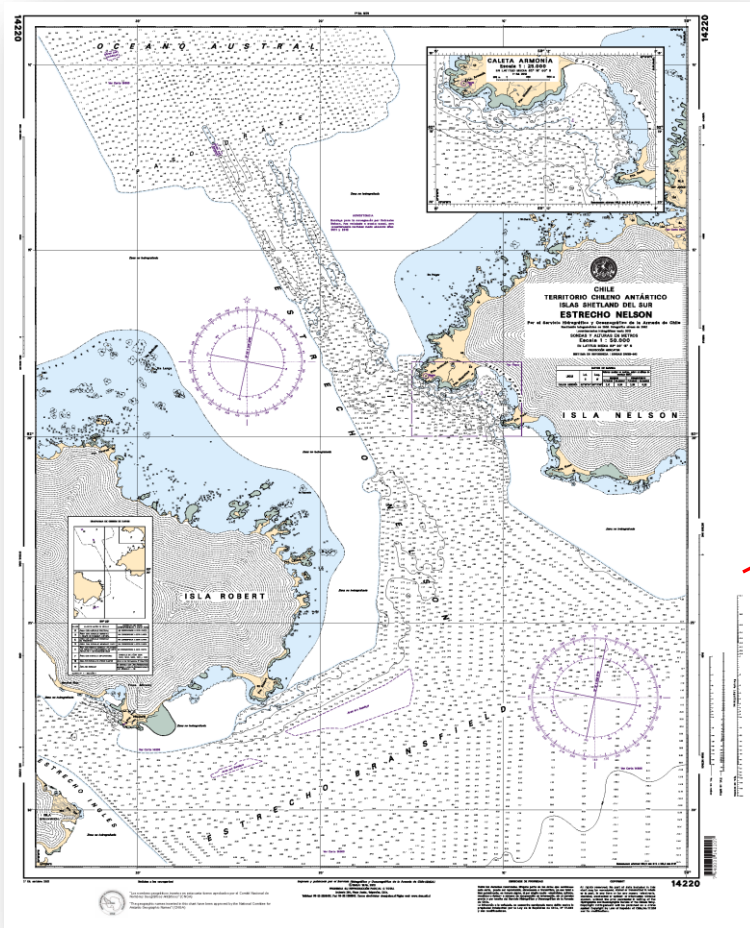
Estrecho Nelson & Caleta Gloria



Cartographic Scheme / National Charts

New Charts:

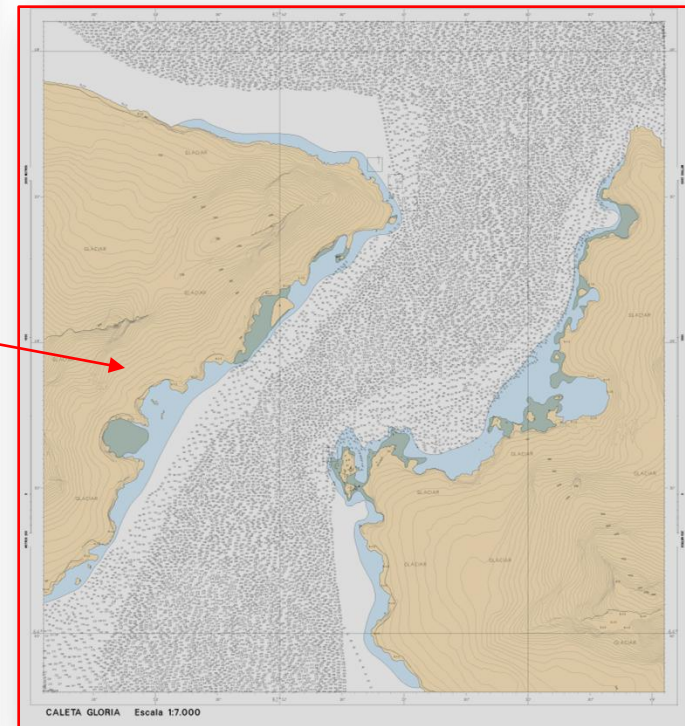
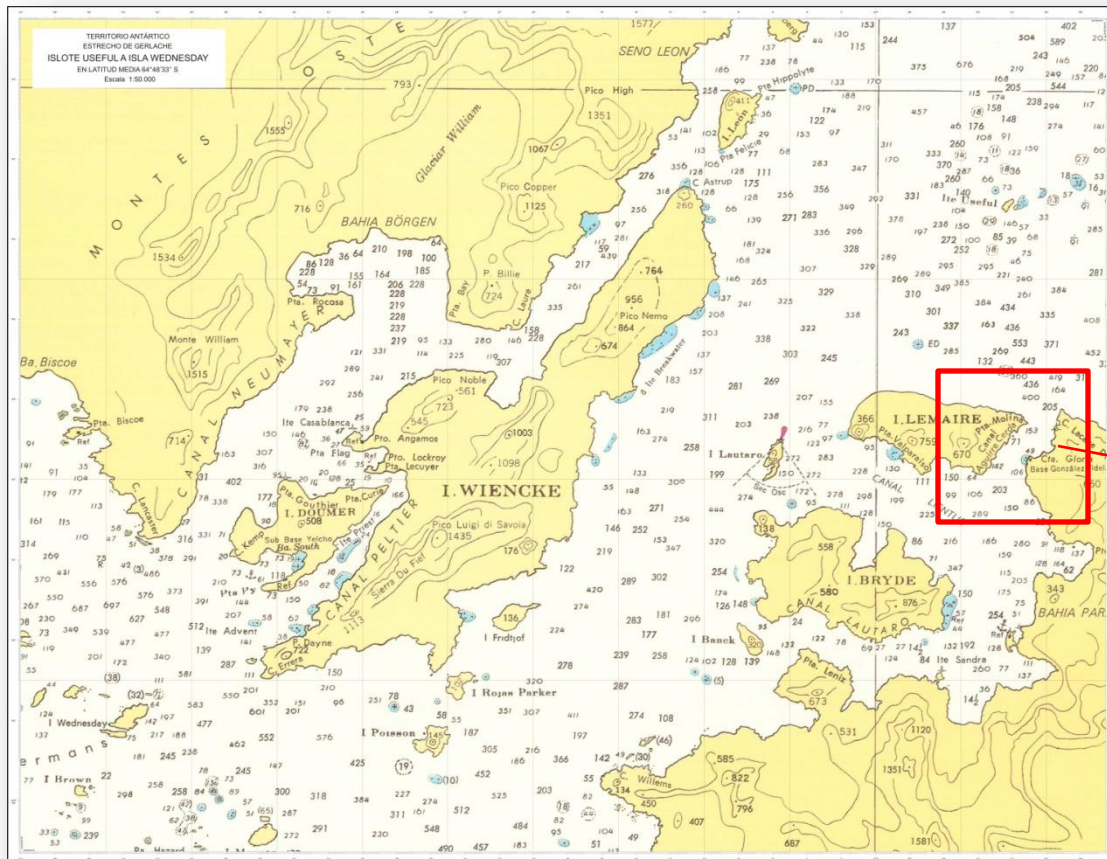
NELSON STRAIT, 1:50.000 (14220) Projected Dec. 2012.



Cartographic Scheme / National Charts

New Charts:

GLORIA CREEK, 1:7.000 (National Chart) Projected Dec. 2012.



ELECTRONIC NAUTICAL CHARTS & PUBLICATIONS



Cartographic Scheme / ENC & Publications

Electronic Nautical Charts:

New ENC's, projected 2013

14211 INT9123	"CALETAS EN BAHÍA FILDES"	
	Caleta Potter	1:12.000
	Caleta Ardley	1: 12.000
	Caleta Marian	1: 12.000
14212 INT9124	"BAHÍA FILDES"	1: 22.000

Publications:

Updating of SHOA Pub. 3006, "Antarctic Sailing Directions".



TABLE OF CONTENTS

- HYDROGRAPHIC ACTIVITIES
- CHARTS AND PUBLICATIONS
- **MARITIME AND SAFETY INFORMATION**



Maritime Safety Information

Chile operates an information infrastructure in accordance with the assigned area of responsibility IMO NAVAREA XV.



Maritime Safety Information

RadioAvisos - NAVAREA XV - Chile

➤ This area considers the Antarctic sector of the Chilean responsibility. Transmissions are made through NAVTEX and SafetyNet according to a pre-established schedule.

➤ Additionally, the Meteorological Service of the Navy broadcasts through NAVTEX and SafetyNet the navigational warnings about ice edges and plotting of drifting icebergs.

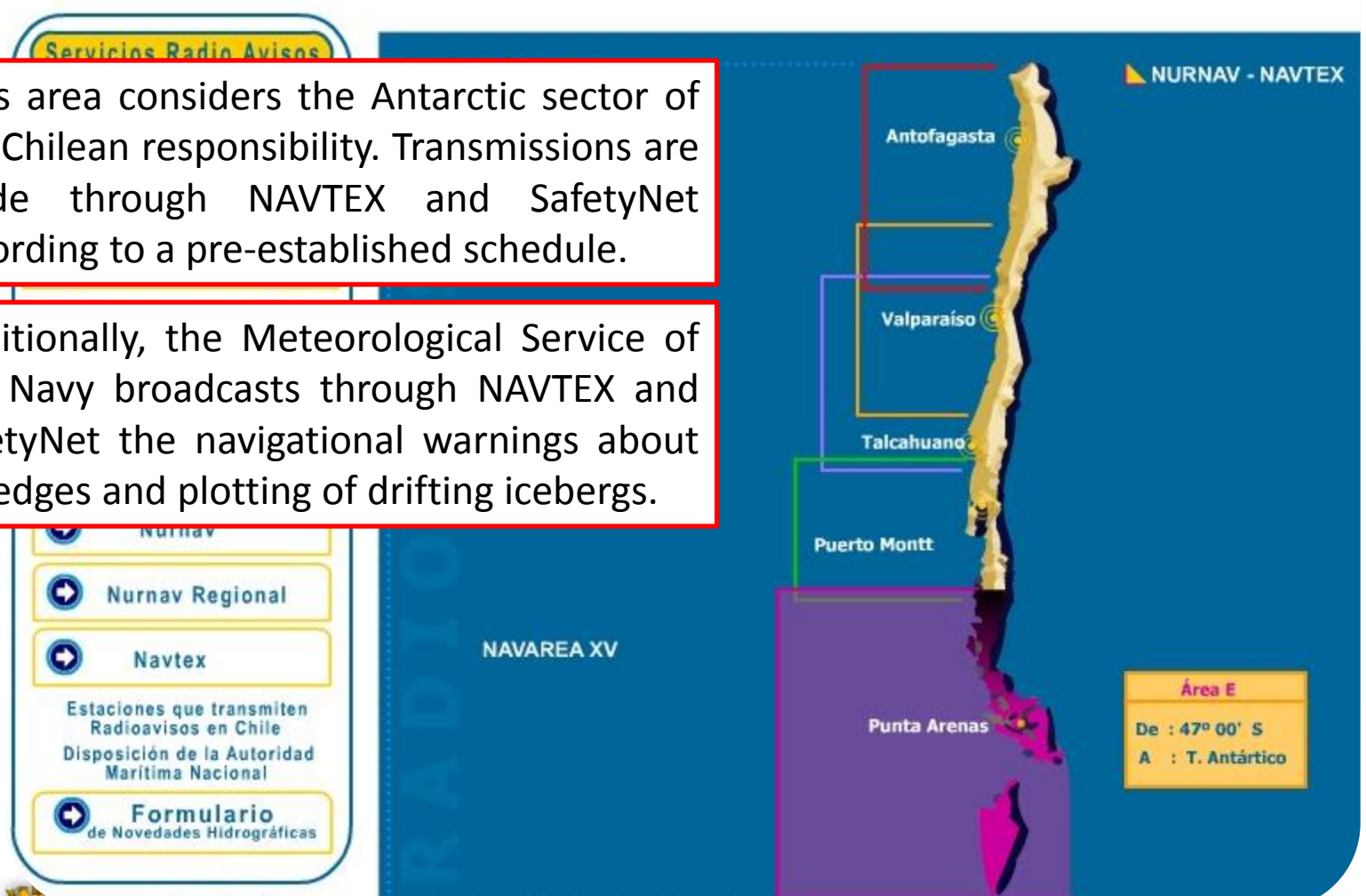


TABLE OF CONTENTS

- **HYDROGRAPHIC ACTIVITIES**
- **CHARTS AND PUBLICATIONS**
- **MARITIME SAFETY INFORMATION**
- **OCEANOGRAPHIC ACTIVITIES**



Oceanographic activities

TIDE GAUGE MAINTENANCE.

“Base Prat”.

“Base O’Higgins”.



BASE General O'higgins , Cabo Legoupil , Península Antártica

TIDE GAUGE INSTALLATION.

“Bahía Paraíso”.

“Bahía South”.



Base Gabriel González Videla, Bahía Paraíso , Península Antártica



TABLE OF CONTENTS

- **HYDROGRAPHIC ACTIVITIES**
- **CHARTS AND PUBLICATIONS**
- **MARITIME SAFETY INFORMATION**
- **OCEANOGRAPHIC ACTIVITIES**
- **OTHER ACTIVITIES**



Other activities

ANTARCTIC GEOGRAPHIC NAMES

The National Committee of Antarctic Geographic Names continuous its work in the Geographic Names Dictionary by checking the charts of the area.





REPORT PREPARED BY THE HYDROGRAPHIC AND OCEANOGRAPHIC SERVICE OF THE CHILEAN NAVY (SHOA)

SERVICIO HIDROGRÁFICO Y OCEANOGRÁFICO DE LA ARMADA DE CHILE

Siempre queda mucho por hacer...