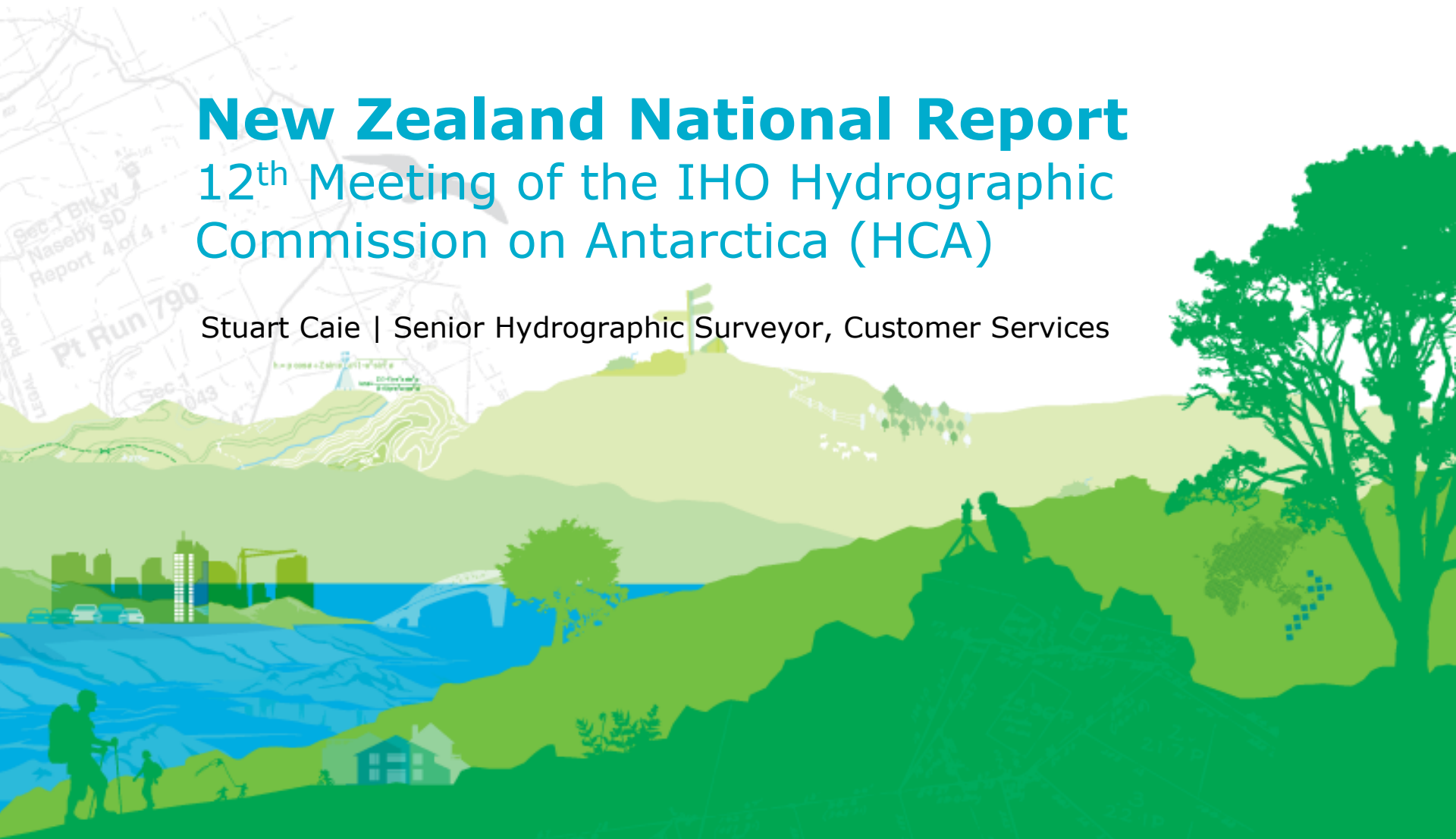


New Zealand National Report

12th Meeting of the IHO Hydrographic Commission on Antarctica (HCA)

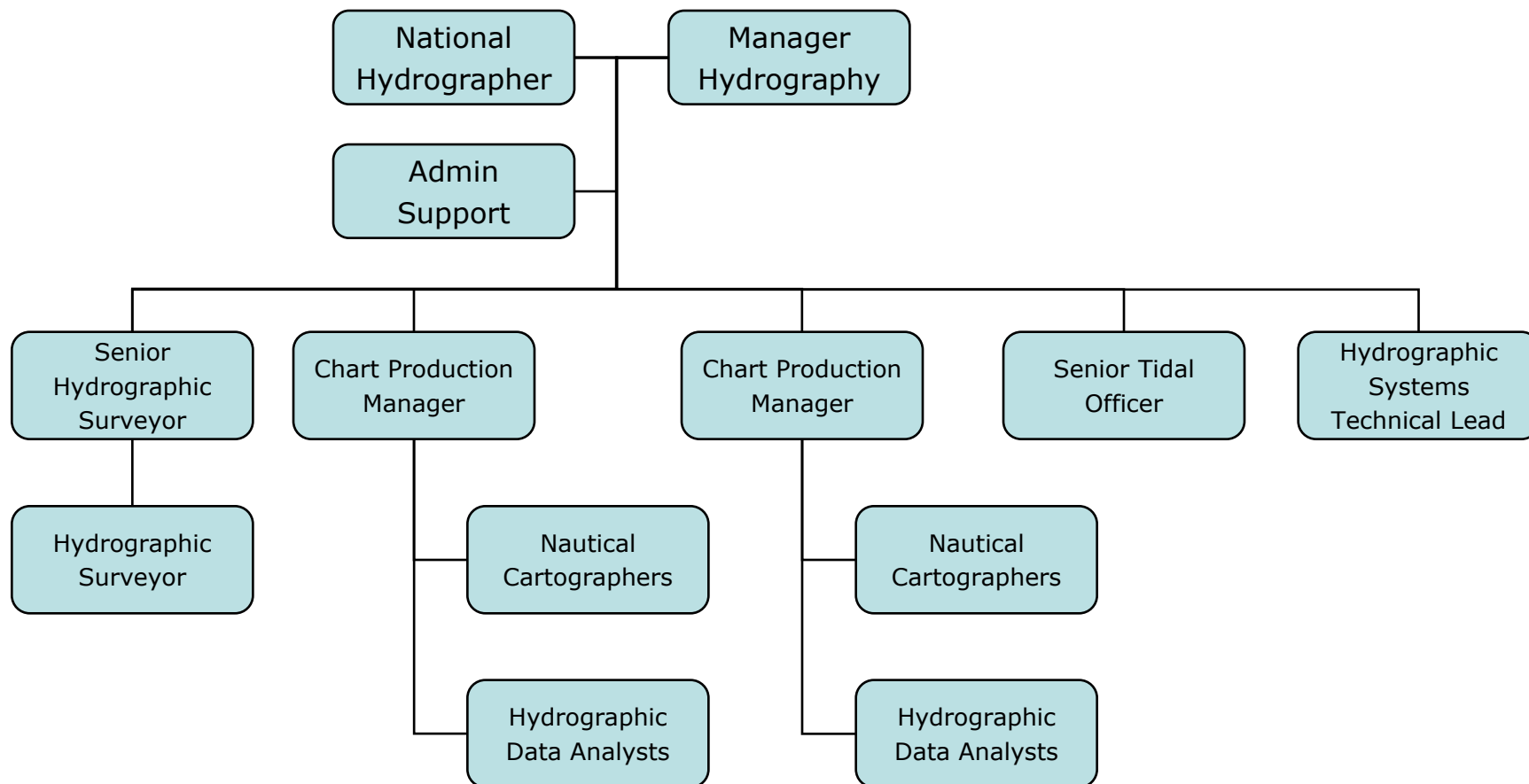
Stuart Caie | Senior Hydrographic Surveyor, Customer Services



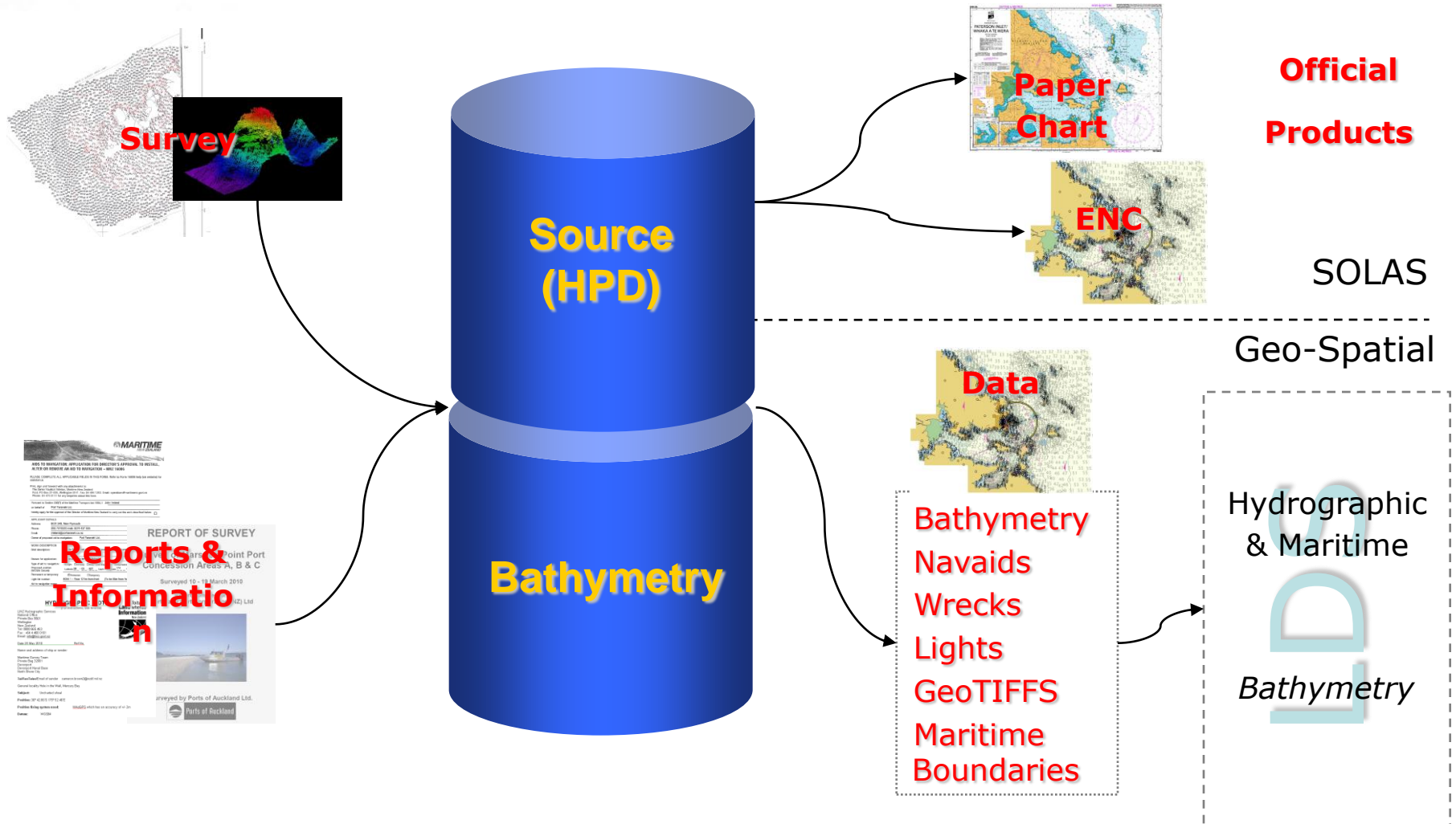
Highlights

- New Zealand Hydrographic Authority
 - Changes & update
- Hydrographic Surveys
- Nautical Charts
 - Paper
 - ENC
- Maritime Safety Information
- Tide Gauge Networks
- Other Activities
 - Protocol for Undersea Feature Naming
 - Co-operation and partnership

NZ Hydrographic Authority



Hydrographic Data Infrastructure (HDI)



Layers | Hydrographic & Maritime | GIS Data | LINZ Data Service - Windows Internet Explorer

http://data.linz.govt.nz/#/layers/category/hydrographic-maritime/

File Edit View Favorites Tools Help

Land Information New Zealand LINZ DATA SERVICE

Home Layers Tables Files Groups

Notice [LDS now has an incremental change set service](#) Dismiss

All Regions filter by region

All Hydrographic & Maritime

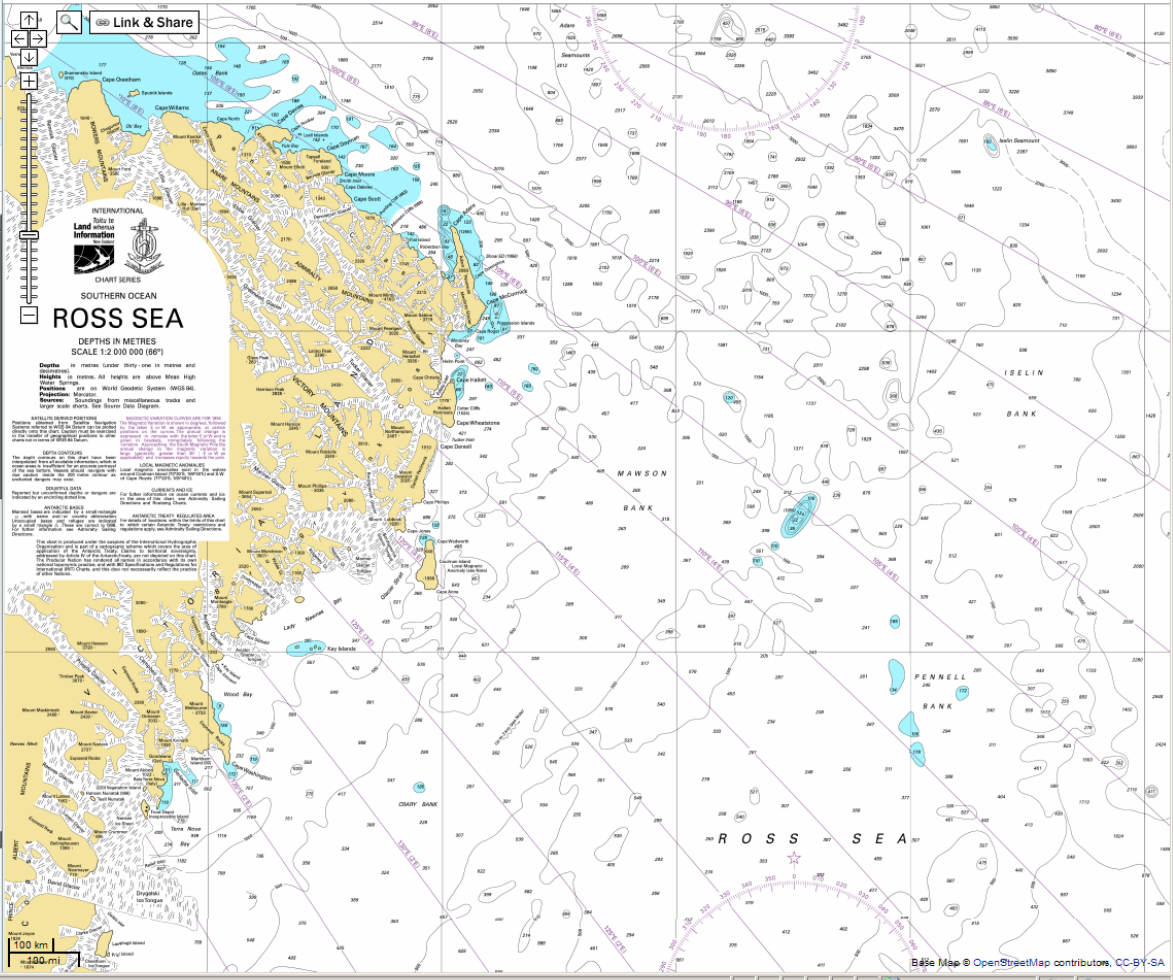
All Categories Most Popular Feed

- Geodetic (8)
- Hydrographic & Maritime**
- Approach Charts (1:22k - 90k) (121)
- Land Features (29)
- Marine Features (26)
- Marine Structures (21)
- Maritime Markers (45)
- Chart Images (312)
- Index (1)
- Coastal Charts (1:90k to 1:350k) (115)
- Land Features (29)
- Marine Features (26)
- Marine Structures (17)
- Maritime Markers (43)
- ENC Extents & Quality (5)
- General Charts (1:350k-1.5ml) (50)
- Land Features (14)
- Marine

▼Your Map 2 items, 756MB Crop Download or Order

- Chart NZ 14900 Ross Sea
- Antarctic Ant50k Maps

Dashboard Stuart Caie Help & Feedback Sign Out



**INTERNATIONAL
Tide to
Land Information
CHART SERIES
SOUTHERN OCEAN
ROSS SEA**

DEPTHS IN METRES
SCALE 1:2 000 000 (80%)

Depths in metres under sixty-one to metres and heights in metres. All heights are above Mean High Water. For use with Geoid System WGS 84. **Precaution:** Soundings from intermediate waters and large scale charts. See Notice Class Diagram.

DEPTHS CONTROLS:
The depth contours are derived from a combination of soundings and bathymetric data. The contours are based on the 1000m contour of the 1:2 000 000 chart. The contours are based on the 1000m contour of the 1:2 000 000 chart.

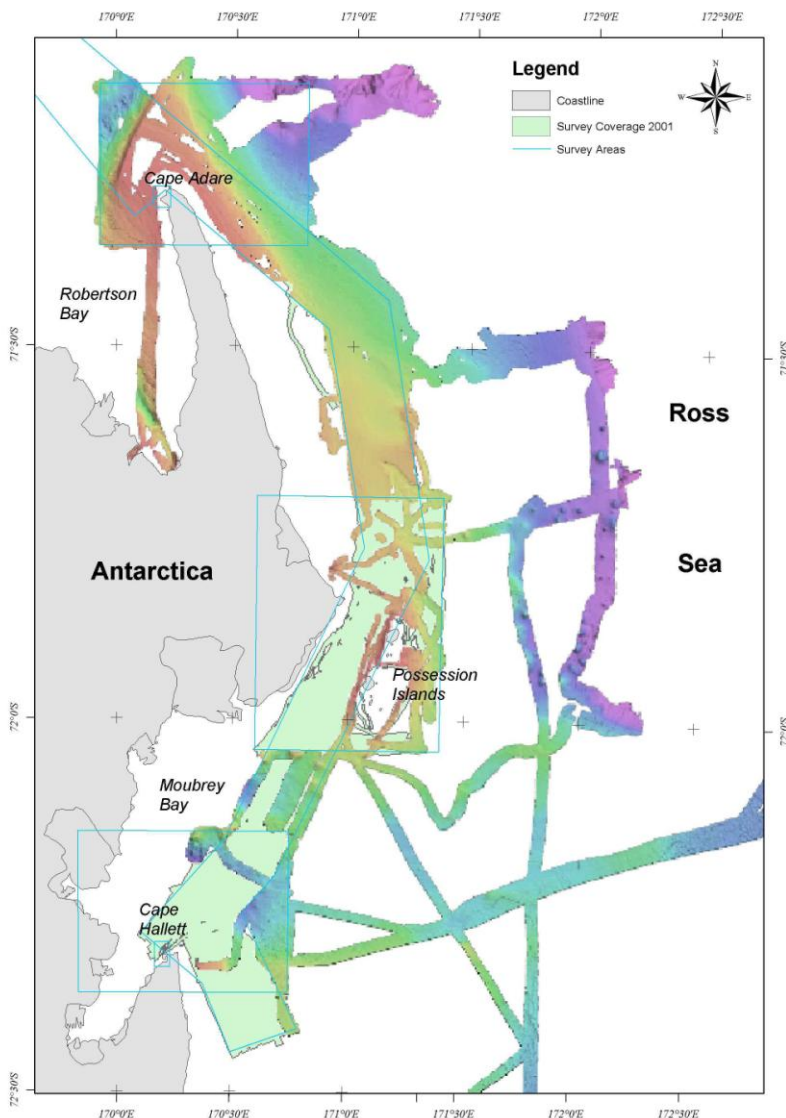
ANTARCTIC DATA:
The data is based on the 1:2 000 000 chart. The data is based on the 1:2 000 000 chart.

ANTARCTIC DATA:
The data is based on the 1:2 000 000 chart. The data is based on the 1:2 000 000 chart.

Base Map © OpenStreetMap contributors, CC-BY-SA

Local Intranet 100%

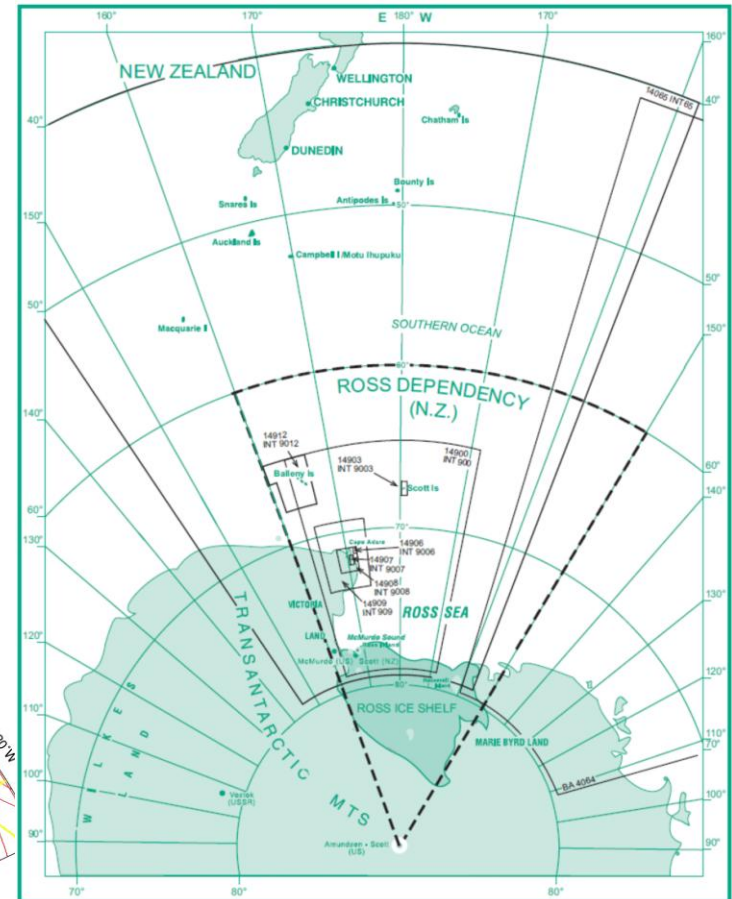
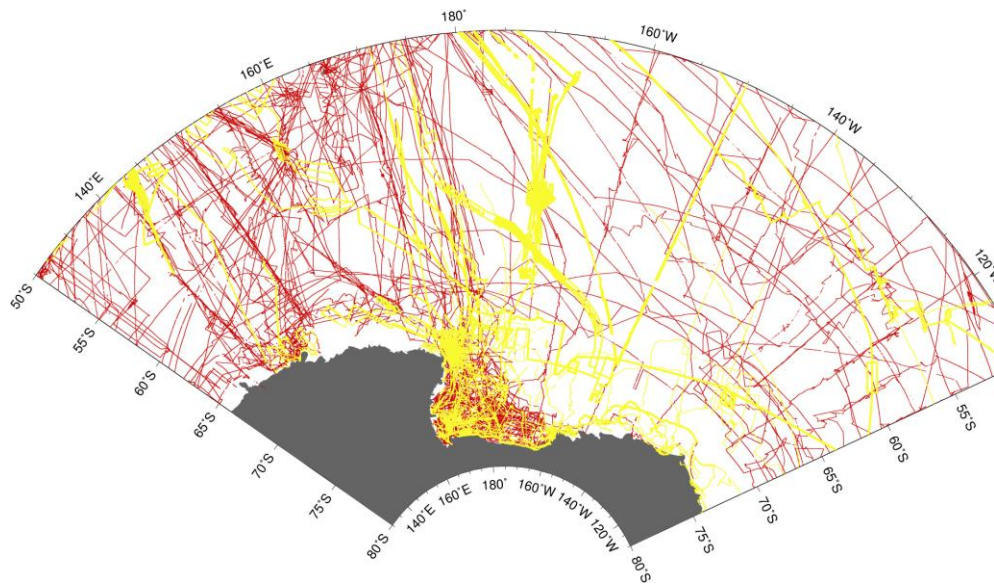
Hydrographic Surveys



- MBES surveys: 2001, 2004, 2006 & 2008
- Ad-hoc surveys by 3rd Parties (GNS)
- Investigating use of RNZN assets
- Discussions with IAATO vessel operators (HCA/2)

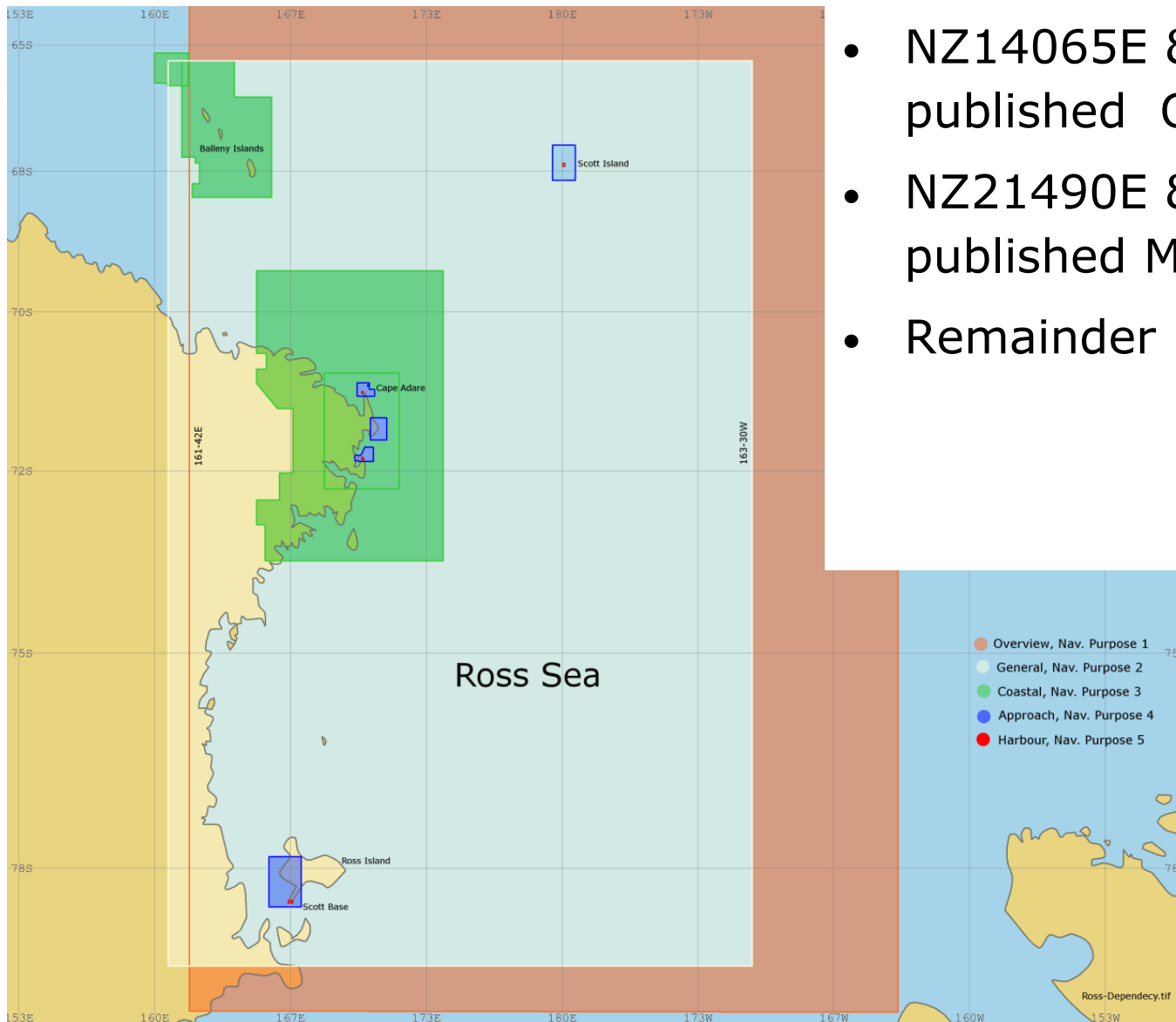
Nautical Charts

- GEBCO sounding sheets provided to NHS, Oct 2011 for INT 909 (HCA/5)
- Update for 3rd party data
- Raster chart format



ENC Coverage

- NZ14065E & NZ14065W published Oct 2011
- NZ21490E & NZ21490W published May 2012
- Remainder by Jun 2013



Maritime Safety Information

- NAVAREA XIV Co-ordinator
- 88 Warnings (Sept)
- Voluntary Ship Reporting System
- In-Force warnings on-line

Home > Charts & Hydrographic Services > Nautical information > NAVAREA XIV Radio Navigational Warnings

NAVAREA XIV Radio Navigational Warnings

Warnings In-Force at: 272130 UTC SEP 12

Number	Warning
76/12	ECDIS DISPLAY ANOMALIES
84/12	SOUTH PACIFIC, PUMICE
88/12	SOUTH PACIFIC AND SOUTHERN OCEAN, SPACE DEBRIS

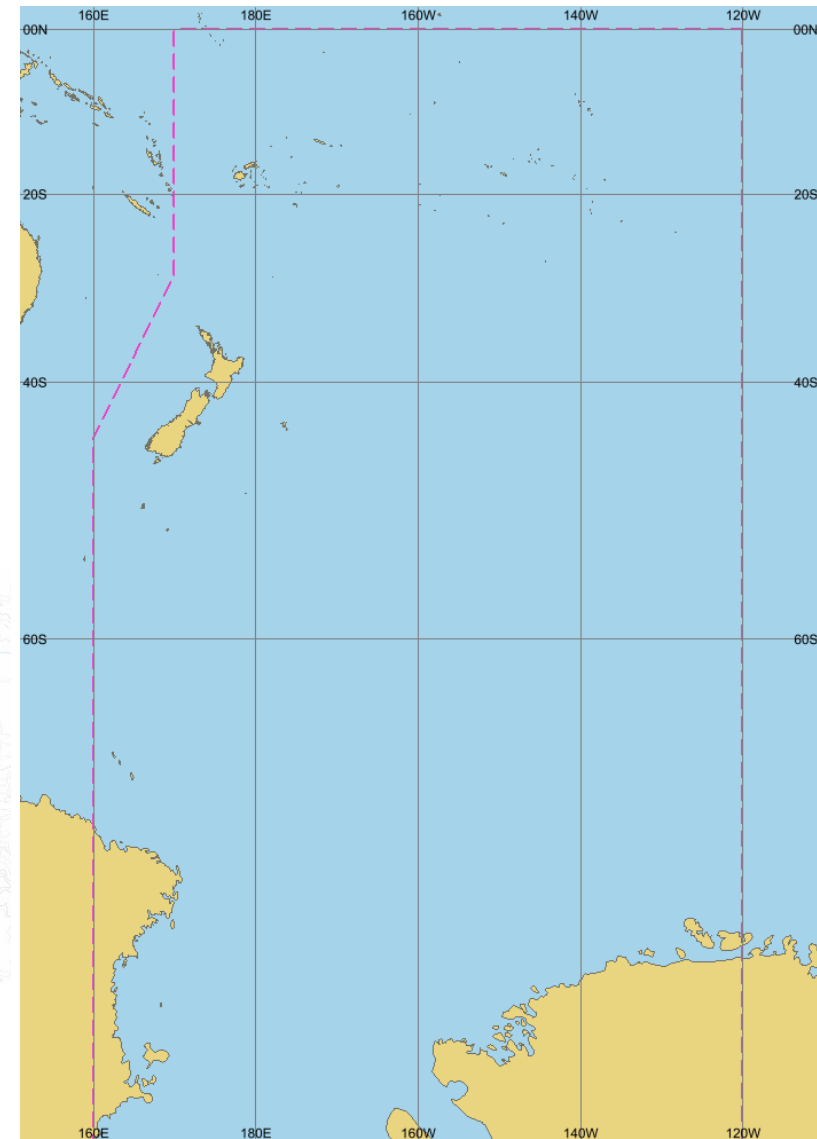
Find out more

For charts and hydrographic services

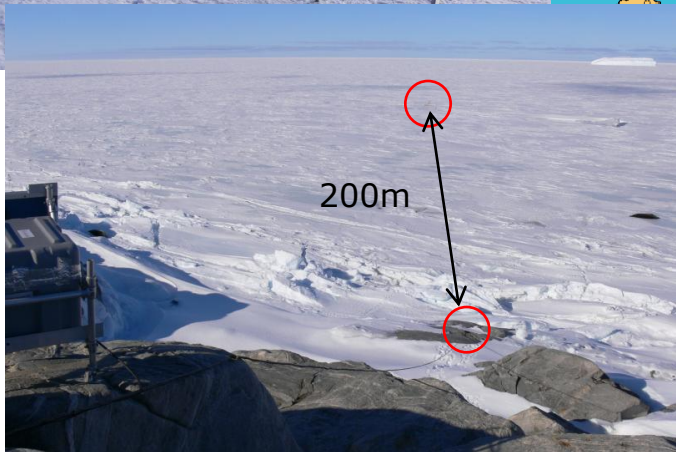
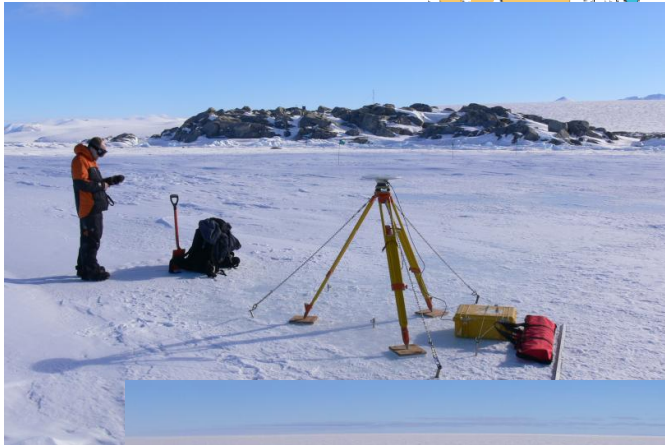
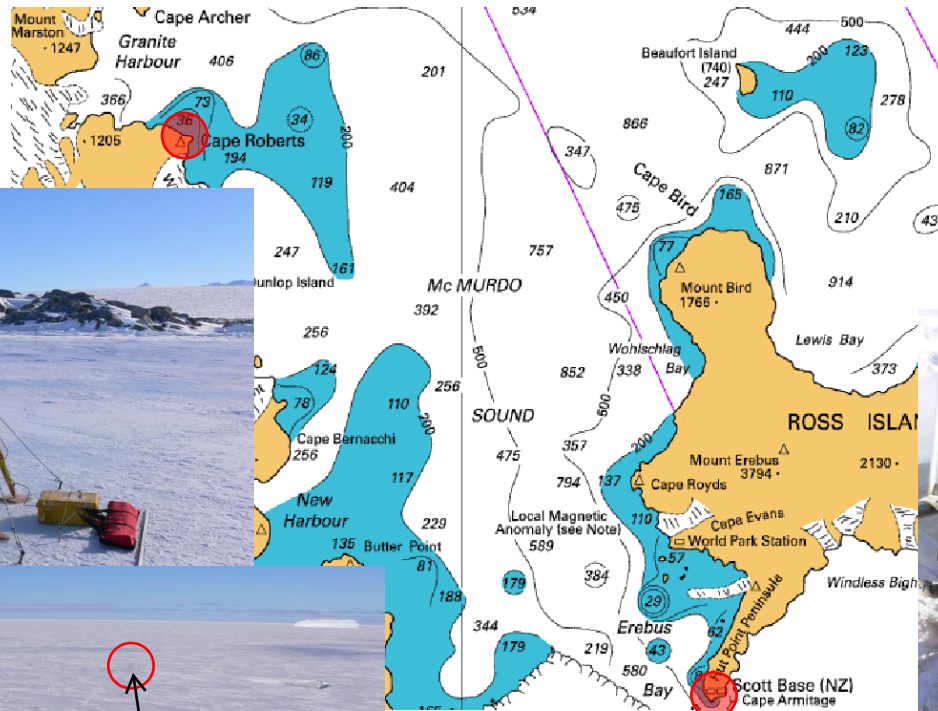
- [Safety at sea](#)
- [Where to buy charts](#)
- [Becoming a chart retailer](#)
- [LINZ's role in charts, tides & navigation](#)
- [LINZ Data Service](#)
- [Support for Emergency Services](#)

Most popular

- [NAVAREA XIV warnings](#)
- [Tide Predictions](#)
- [NZ 202 - Chart Catalogue](#)
- [Current edition of Notices to Mariners](#)



Tide Gauge Network

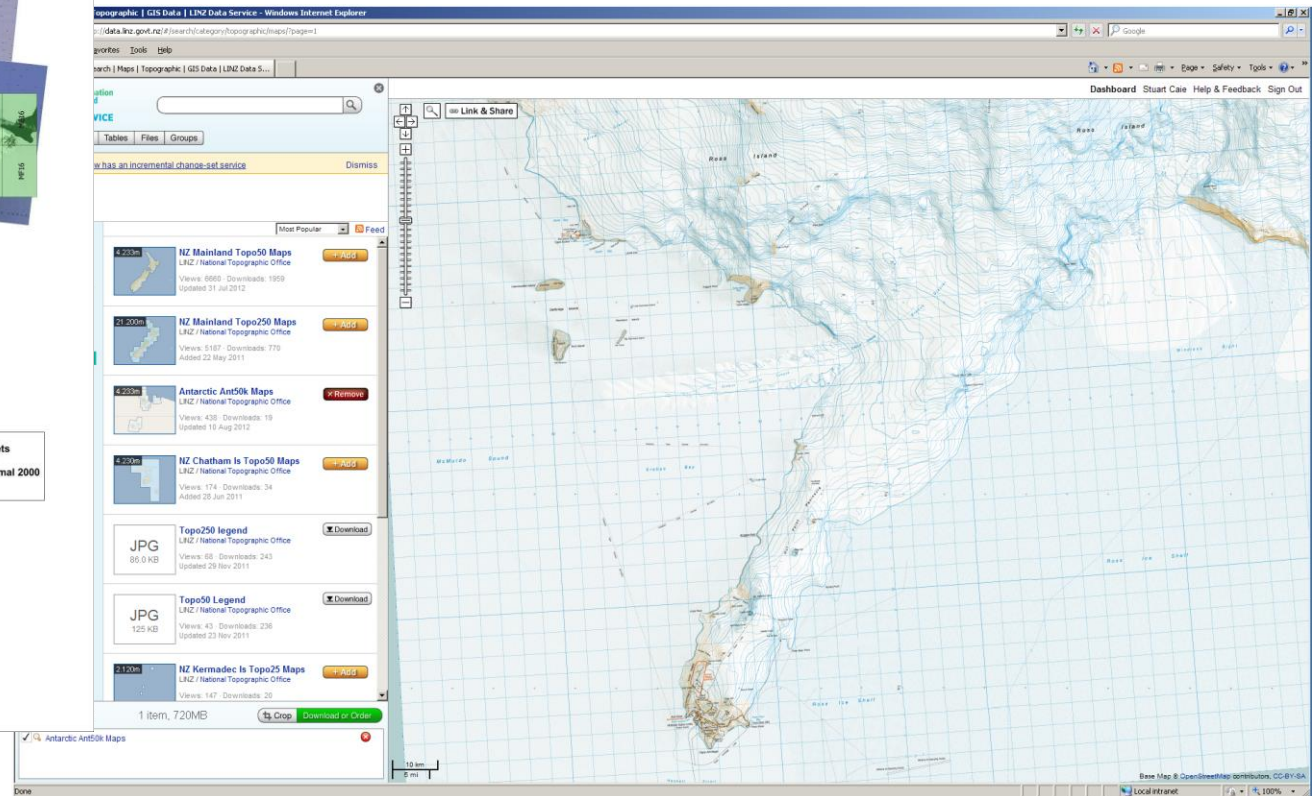
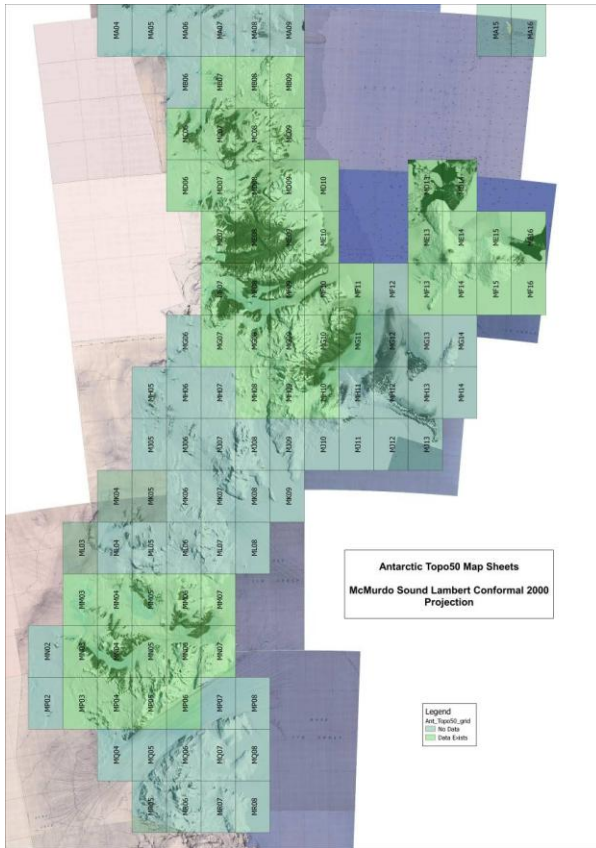


Other Activities

- Protocol for Undersea Feature Naming
 - August 2012 by NZ Geographic Board
 - SCUFN XXV, Wellington, NZ, Oct 2012
- South West Pacific Regional Hydrography Programme
 - LINZ/MFAT MOU
 - Risk assessment of adequacy & accuracy of nautical charts
- IHO Transfer Standard Maintenance and Application Development WG (TSMAD) – NZ, Jan 2012
- 6th International Conference on High-Resolution Surveys in Shallow Water
- Discussions with IAATO, Antarctica NZ, MFAT and NZDF
- 1:50,000 topographic maps available on-line



Topographic maps



topographic | GIS Data | LINZ Data Service - Windows Internet Explorer

Search | Maps | Topographic | GIS Data | LINZ Data 5...

Antarctic Ant50k Maps

1 item, 720MB

Antarctic Ant50k Maps

The screenshot shows the Land Information New Zealand website interface. The main content area displays a list of map products with their respective details:

- NZ Mainland Topo50 Maps**: LINZ / National Topographic Office, Views: 659, Downloads: 1959, Updated 31 Jul 2012. [Add]
- NZ Mainland Topo250 Maps**: LINZ / National Topographic Office, Views: 5187, Downloads: 770, Added 23 May 2011. [Add]
- Antarctic Ant50k Maps**: LINZ / National Topographic Office, Views: 438, Downloads: 19, Updated 18 Aug 2012. [Remove]
- NZ Chatham Is Topo50 Maps**: LINZ / National Topographic Office, Views: 174, Downloads: 34, Added 20 Jun 2011. [Add]
- Topo250 legend**: LINZ / National Topographic Office, Views: 68, Downloads: 243, Updated 28 Nov 2011. [Download]
- Topo50 Legend**: LINZ / National Topographic Office, Views: 43, Downloads: 236, Updated 23 Nov 2011. [Download]
- NZ Kermadec Is Topo25 Maps**: LINZ / National Topographic Office, Views: 147, Downloads: 20. [Add]

The interface also includes a search bar, navigation tabs (Tables, Files, Groups), and a sidebar with a 'Link & Share' button. The main map area shows a topographic map of New Zealand with a grid overlay. The bottom of the page features a scale bar (10 km, 5 mi) and a 'Local intranet' link.

Thank You & Questions

