

HYDROGRAPHIC COMMISSION ON ANTARCTICA



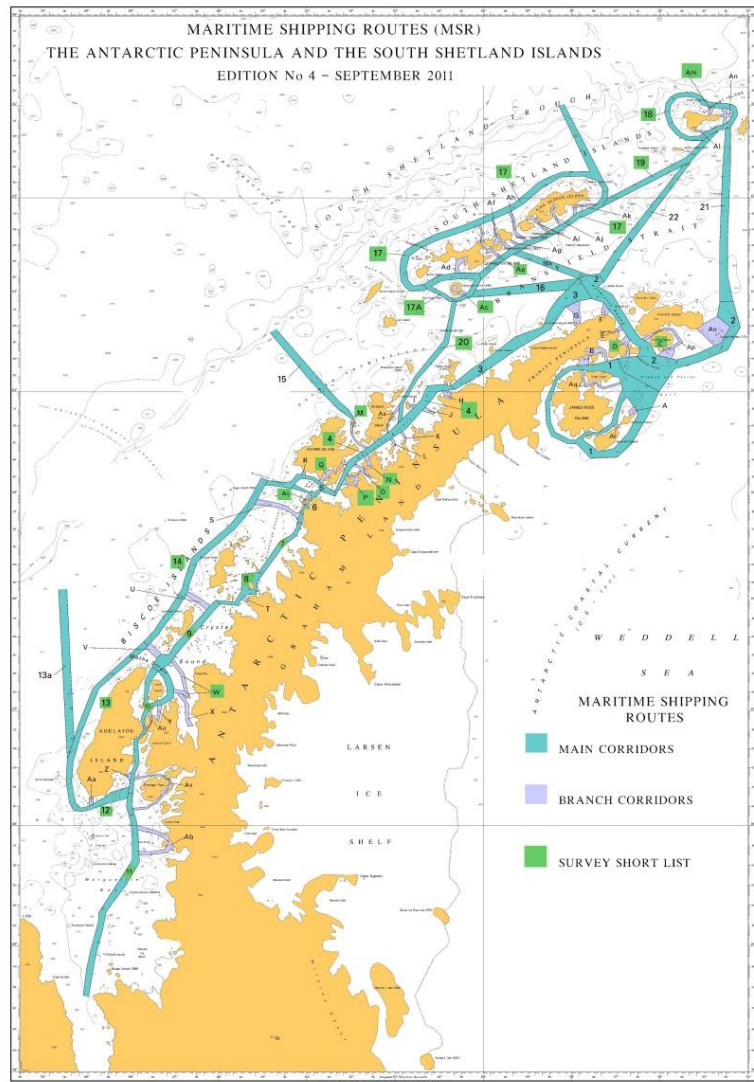
SURVEY PRIORITISATION WORKING GROUP
HCA 12 MONTEVIDEO, URUGUAY

MEMBERS AND OBSERVERS OF THE HCA

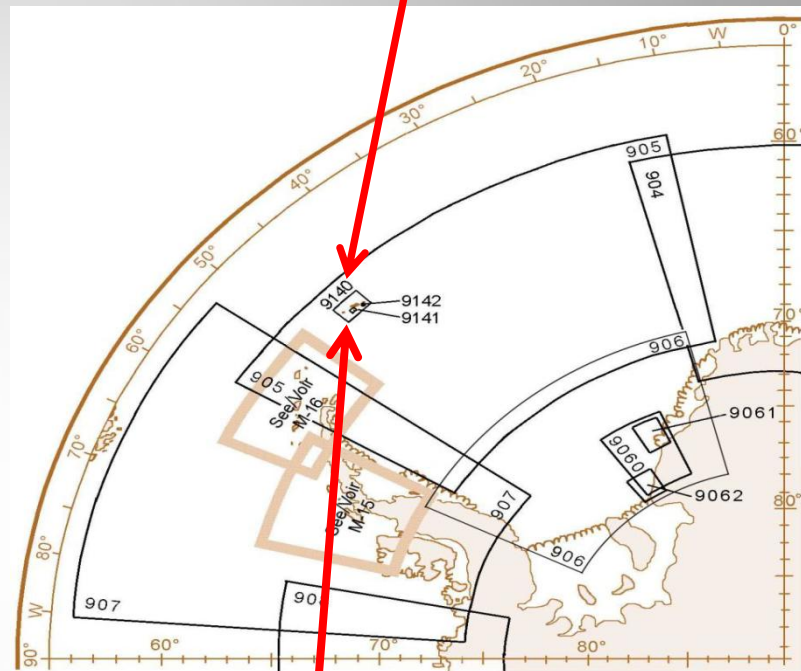
**DO WE NEED TO AMEND THE MSR ROUTES
AND SURVEY PRIORITIES TO INCLUDE
THE SOUTH ORKNEY ISLANDS ??**



EXISTING MSR ROUTES



SOUTH ORKNEY ISLANDS



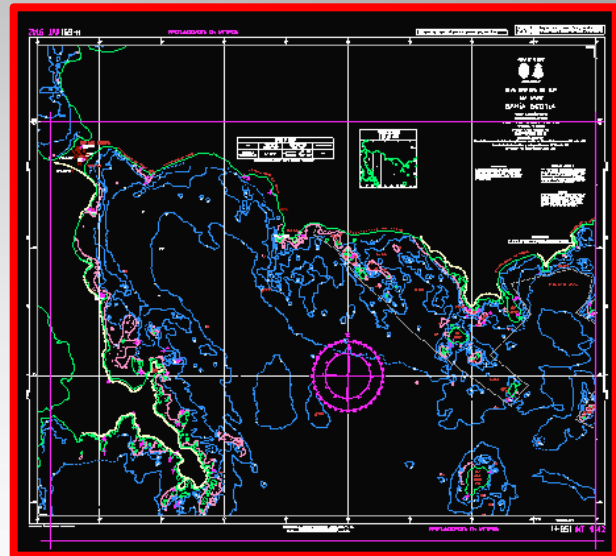
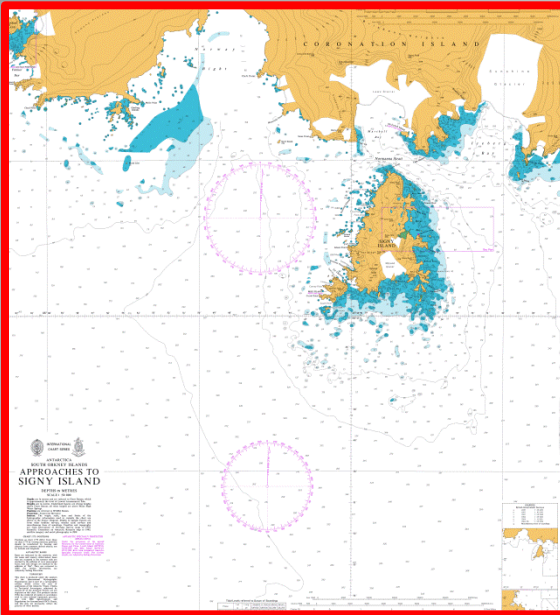
BELLINGSHAUSEN SEA TO WEDDELL SEA (90° - 0°W)

MER BELLINGSHAUSEN A MER DE WEDDELL (90° - 0°W)

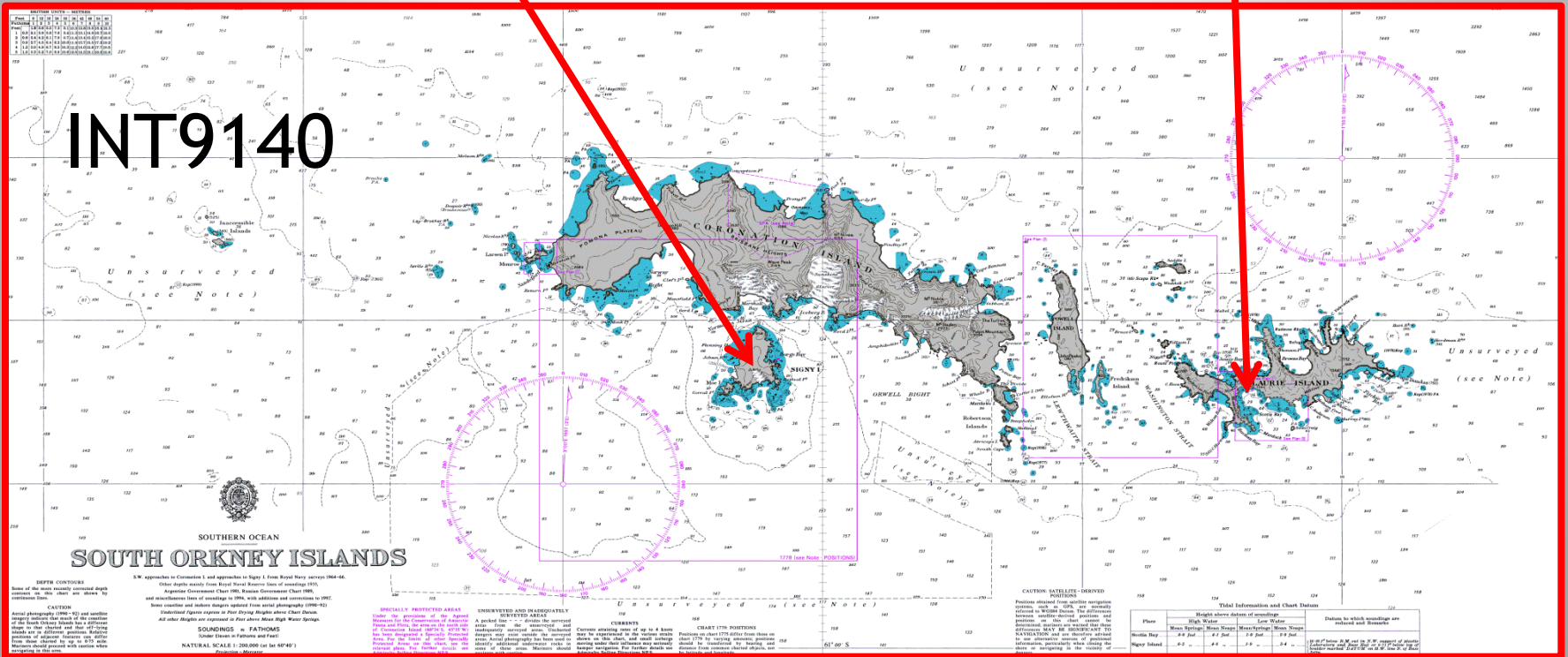
INT No.	Prod.	National No.	TITLE / TITRE	CHART LIMITS / LIMITES DE LA CARTE				Scale / Echelle	Date	Format	Printer (Nat. No. - Date NE)
				South/Sud	North/Nord	West/Ouest	East/Est				
904	See/Voir M.5										
905	DE		South Sandwich Islands	71°00.00'S	59°10.00'S	59°00.00'W	11°00.00'W	2 000 000	66°	Proj 13	
906	GB	4906	Weddell Sea	78°41.30'S	70°00.00'S	63°00.00'W	14°32.80'W	2 000 000	66°	05/	
907	GB	4907	Antarctic Peninsula	74°00.00'S	55°40.00'S	86°02.00'W	53°00.00'W	2 000 000	66°	00/	
908	See/Voir M.10										
9060	RU	31147	Cabo Rol to Valsel Bay	77°58.00'S	74°05.00'S	35°50.00'W	23°50.00'W	500 000	75°	00/10	
9061	GB	3629	Approaches to Halley Base	76°00.00'S	74°12.78'S	29°00.00'W	24°20.30'W	200 000	75°05'	05/	
9062	US	29742	Vashel Bay and Vicinity including Belgrano Station	78°20.00'S	76°50.00'S	37°30.00'W	31°30.00'W	200 000	77°35'	12/	
9140	AR		Islas Orcadas del Sur	61°10.00'S	60°10.00'S	46°55.00'W	44°08.00'W	150 000	60°40'	Post 15	
9141	GB	1779	Approaches to Signy Island Plan A - Borge Bay and Approaches	60°54.60'S	60°35.00'S	46°02.67'W	45°26.00'W	50 000		06/	
9142	AR	H-651	Bahia Scotia	60°42.90'S	60°41.50'S	45°58.00'W	45°38.64'W	10 000			
				60°47.10'S	60°43.40'S	44°45.00'W	44°36.00'W	10 000		12/	

INT9142

INT9141



INT9140

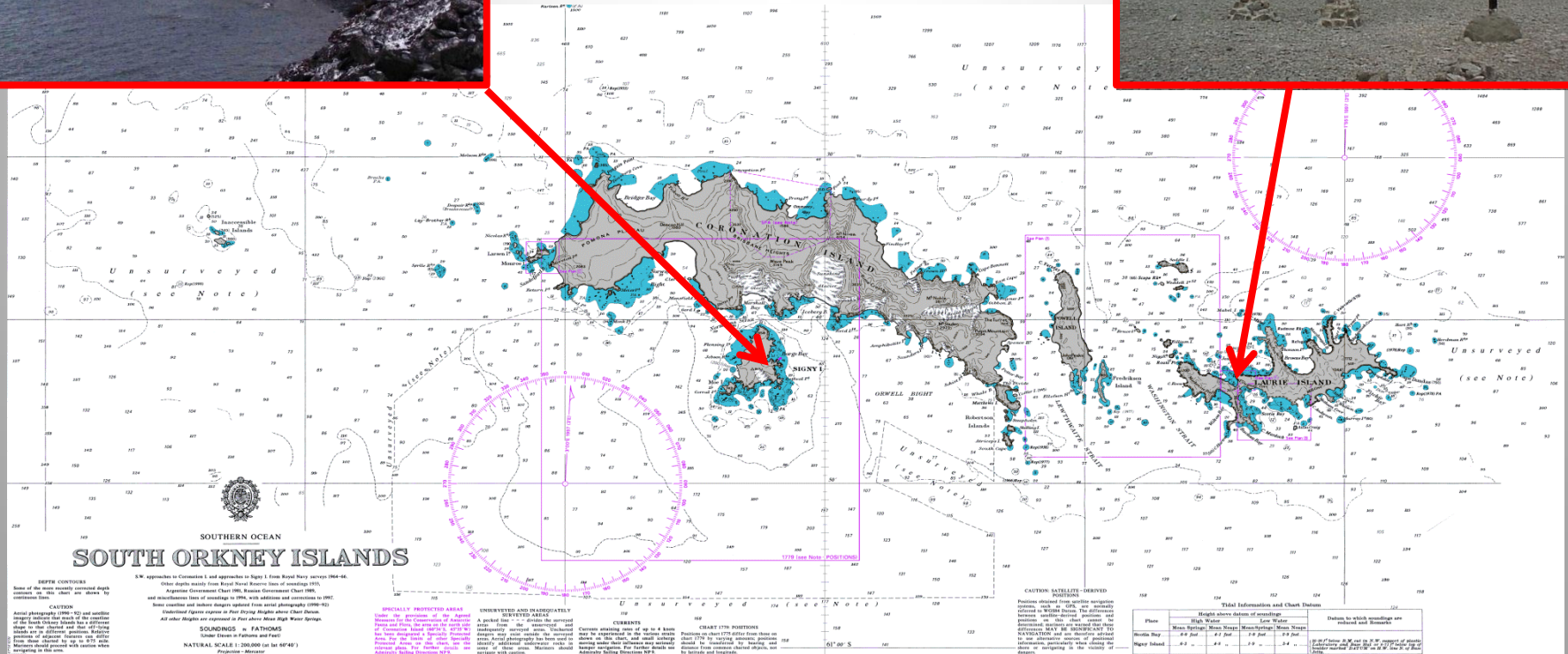


SCIENTIFIC BASES

SIGNY BASE (UK)

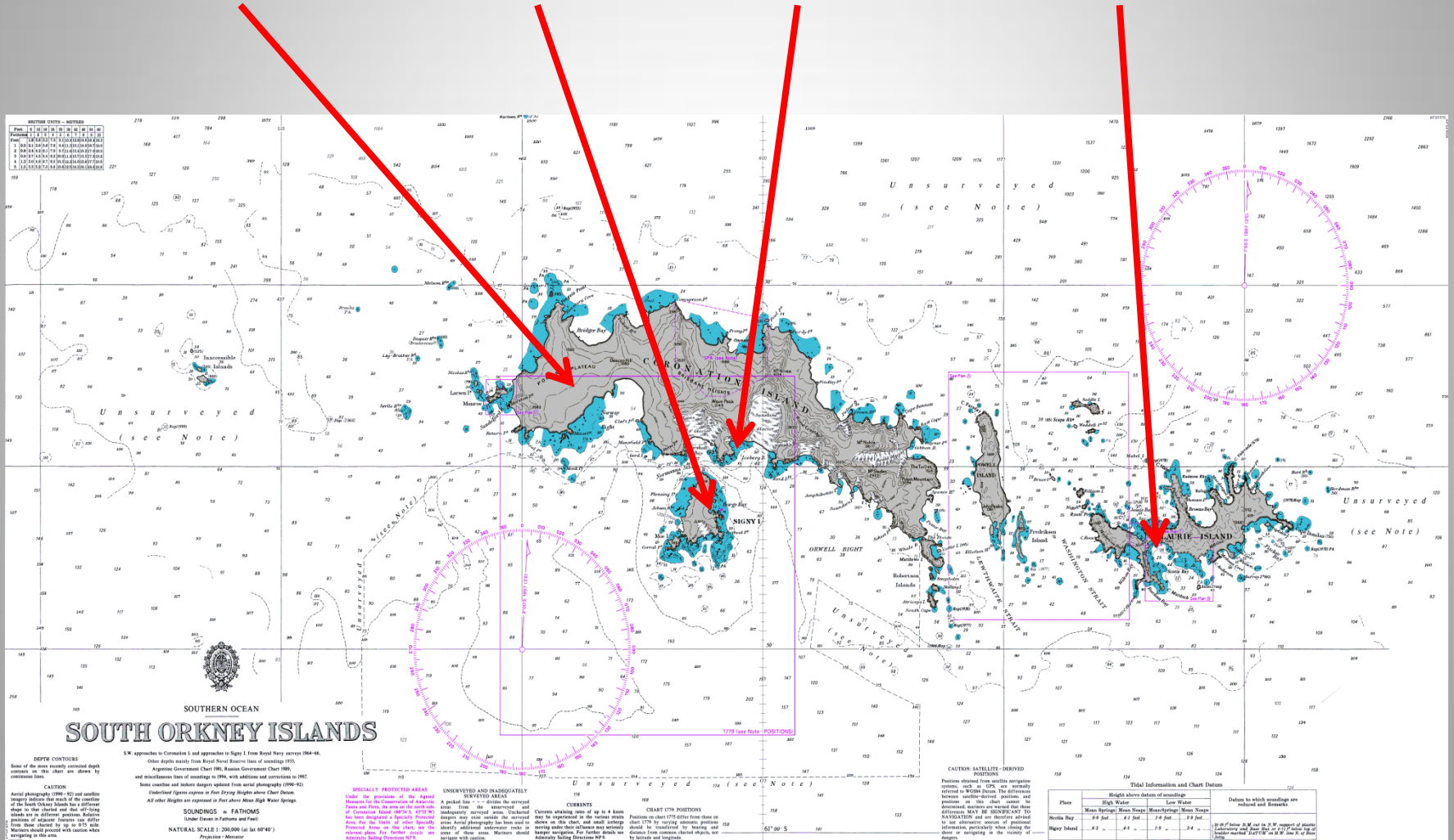


ORCADAS BASE (Argentina)

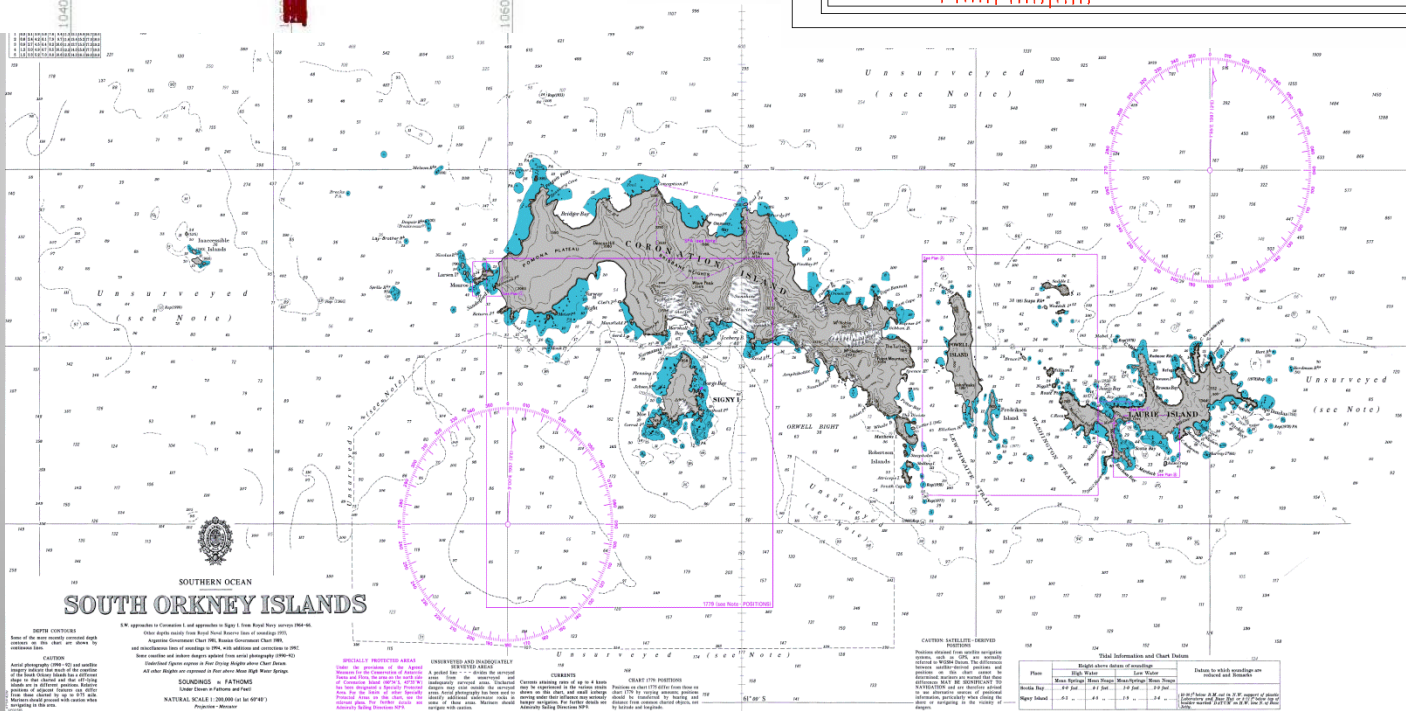
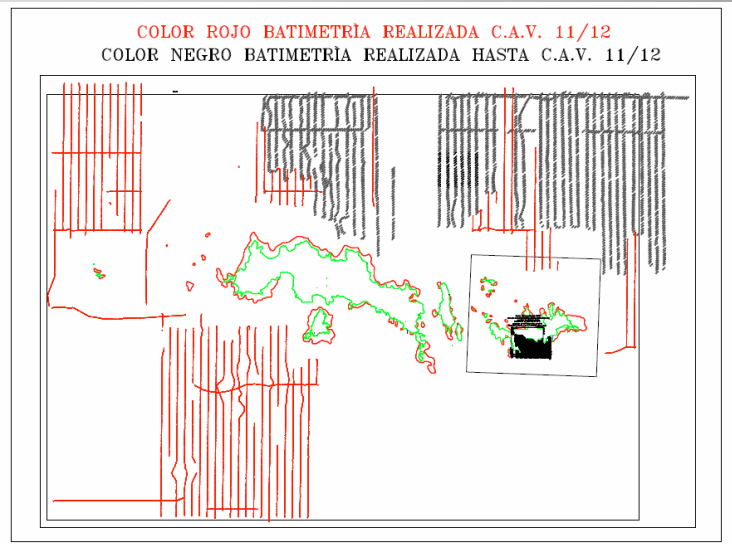
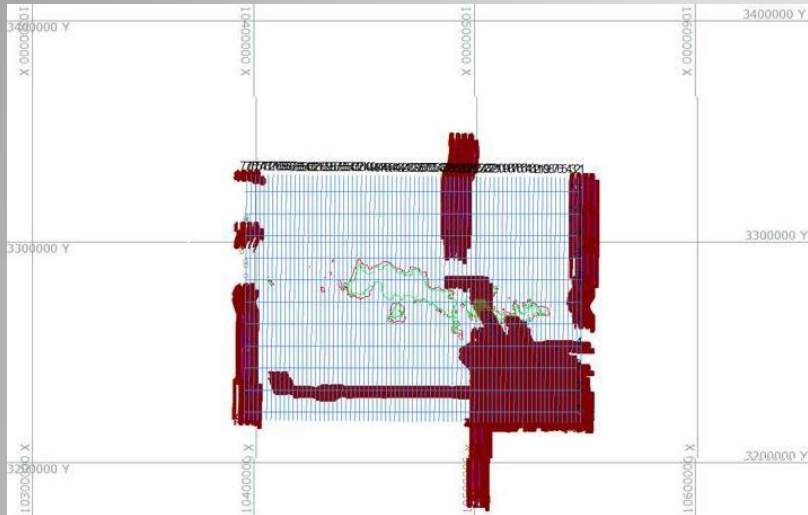


IAATO VISITOR STATISTICS 2011/12 SEASON

CORONATION IS. + SIGNY BASE + SHINGLE COVE + ORCADAS BASE = 2063



RECENT ARGENTINE SURVEYS



QUESTIONS??