



IBCSO v1.0

A new view on Antarctic bathymetry

Arndt, Jan Erik¹); Schenke, Hans Werner¹); Jakobsson, Martin²); Nitsche, Frank O. ³); Buys, Gwen⁴); Goleby, Bruce⁵); Rebesco, Michele⁶); Bohoyo, Fernando ⁷); Hong, Jong-Kuk ⁸); Black, Jenny ⁹); Greku, Rudolf ¹⁰); Udintsev, Gleb ¹¹); Barrios, Felipe ¹²); Reynoso-Peralta, Walter ¹³); Taisei, Morishita ¹⁴); Wigley, Rochelle ¹⁵);

¹) Alfred-Wegener-Institute; ²) Stockholm University; ³) Lamont-Doherty Earth Observatory; ⁴) British Antarctic Survey; ⁵) Geoscience Australia; ⁶) Istituto Nazionale di Oceanografia e di Geofisica Sperimentale; ⁷) Instituto Geológico y Minero de España; ⁸) Korean Polar Research Institute; ⁹) Institute of Geological and Nuclear Sciences; ¹⁰) Institute of Geological Sciences; ¹¹) Vernadsky Institute of Geochemistry and Analytical Chemistry; ¹²) Department of Hydrography, Chile; ¹³) Navy Hydrographic Service, Argentina; ¹⁴) Japan Coast Guard; ¹⁵) University of New Hampshire



Organization of the IBCSO



- Expert Group of SCAR since 2004



- Regional Mapping project of General Bathymetric Chart of the Oceans (GEBCO)



- Operates under the joint auspices of the Intergovernmental Oceanographic Commission (IOC) (of UNESCO) and the International Hydrographic Organization (IHO)



- Cooperation with the IHO Hydrographic Commission on Antarctica (HCA)



- Located at the Alfred Wegener Institute (AWI)

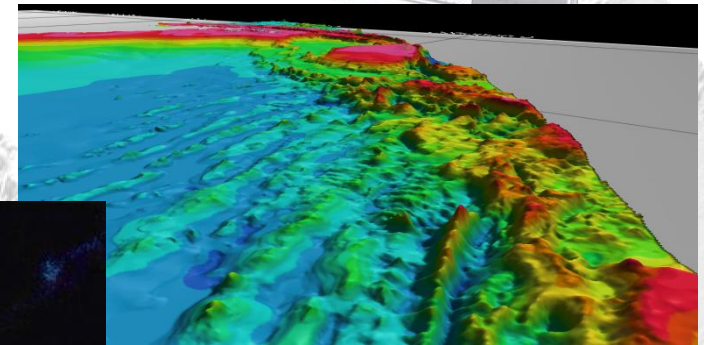
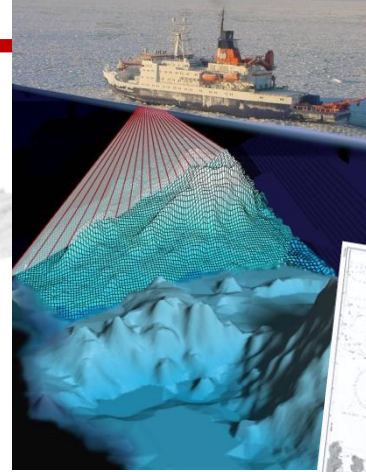


Data Contributors



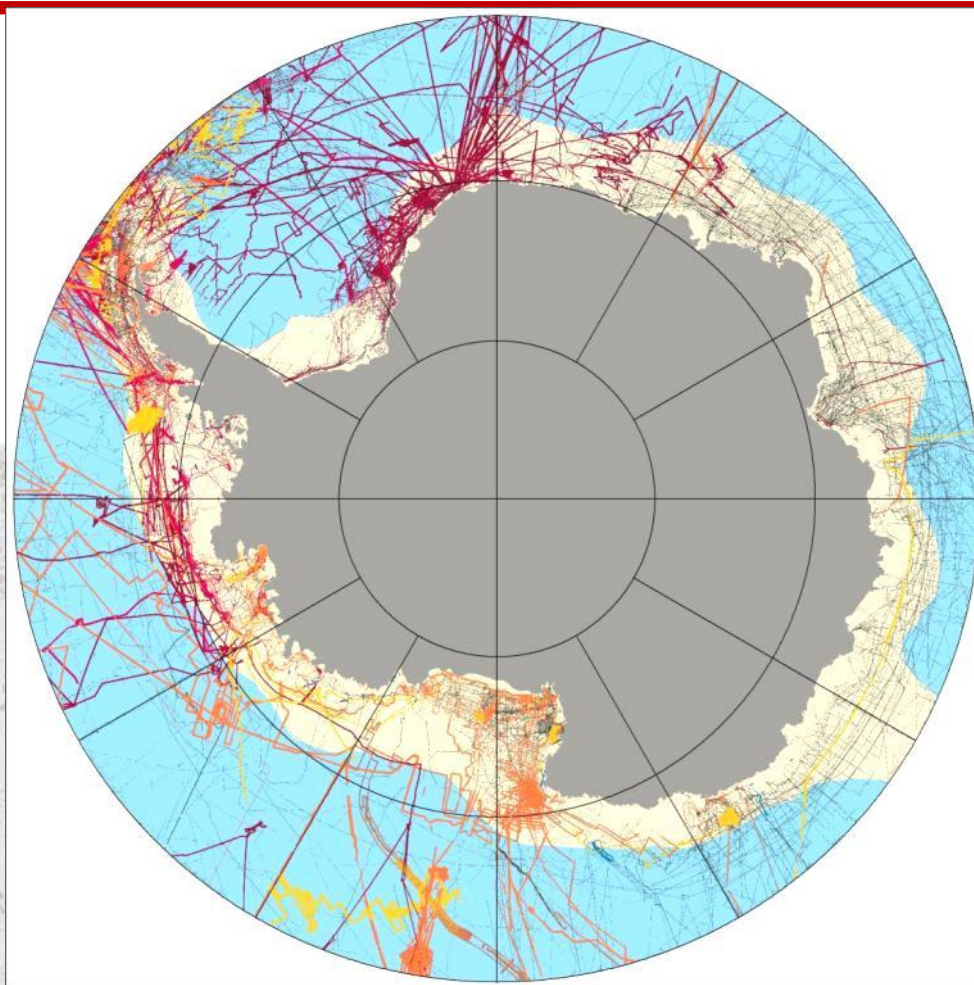
IBCSO Database

- Soundings
 - Multibeam
 - Singlebeam
- Nautical Charts
- Bathymetric Compilations
- Predicted bathymetry from satellite altimetry
- Continental Data



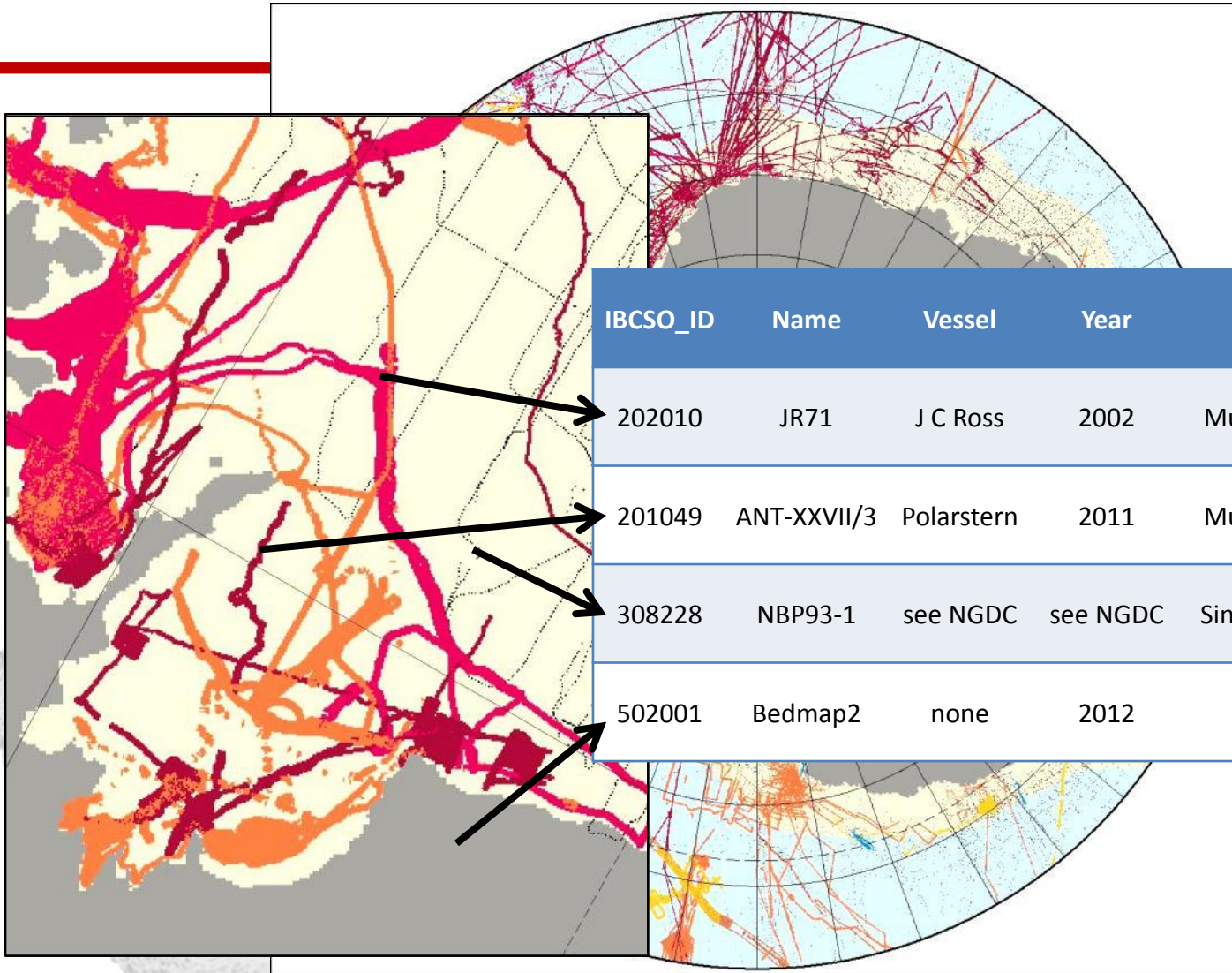
Data Distribution

- More than 4200 million soundings
- 15.4 % Multibeam
- 1.4 % Singlebeam



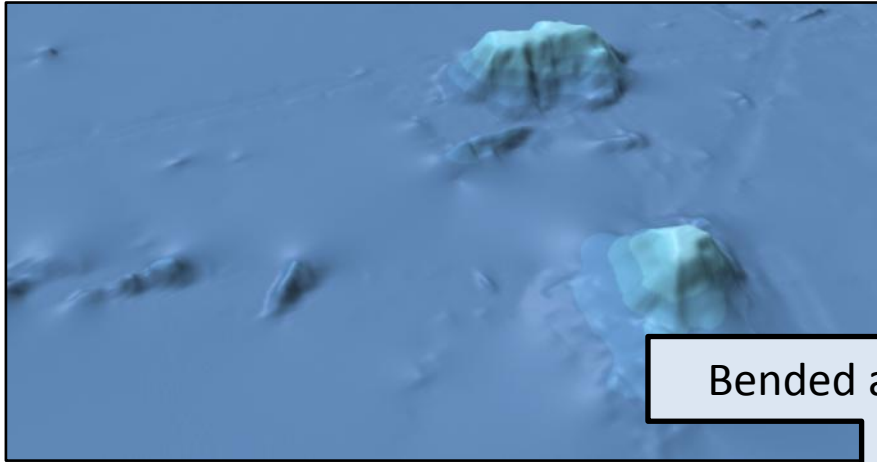
- Multibeam from AWI
- Multibeam from BAS
- Multibeam from MGDS & NGDC
- Multibeam from other institutions
- Singlebeam
- Various Data
- Interpolated
- GEBCO_08
- Bedmap2

Source Identifier (SID)

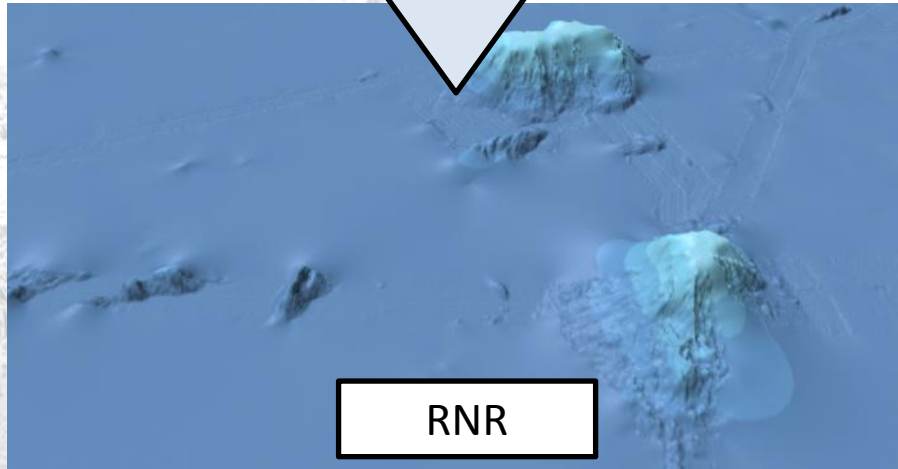


IBCSO_ID	Name	Vessel	Year	Type	Source	Reference (PI)
202010	JR71	J C Ross	2002	Multibeam	BAS	Pudsey
201049	ANT-XXVII/3	Polarstern	2011	Multibeam	AWI	Knust
308228	NBP93-1	see NGDC	see NGDC	Singlebeam	NGDC	see NGDC
502001	Bedmap2	none	2012	Other	BAS	Fretwell

Gridding (remove-restore)

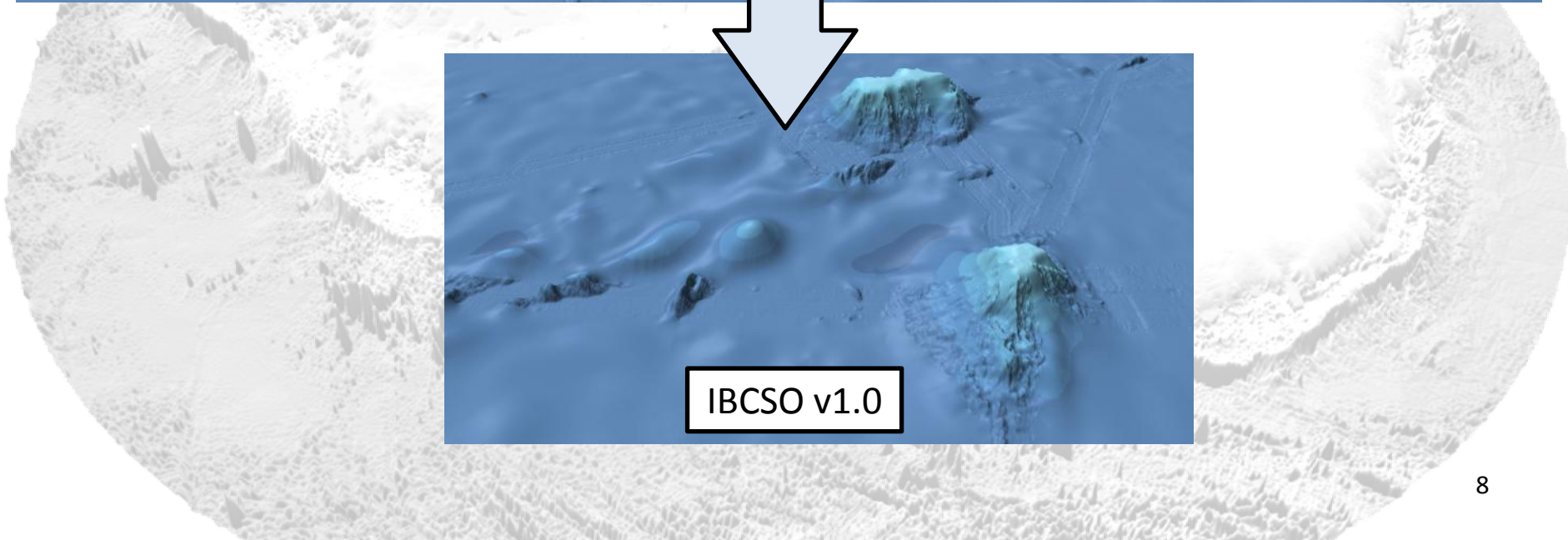
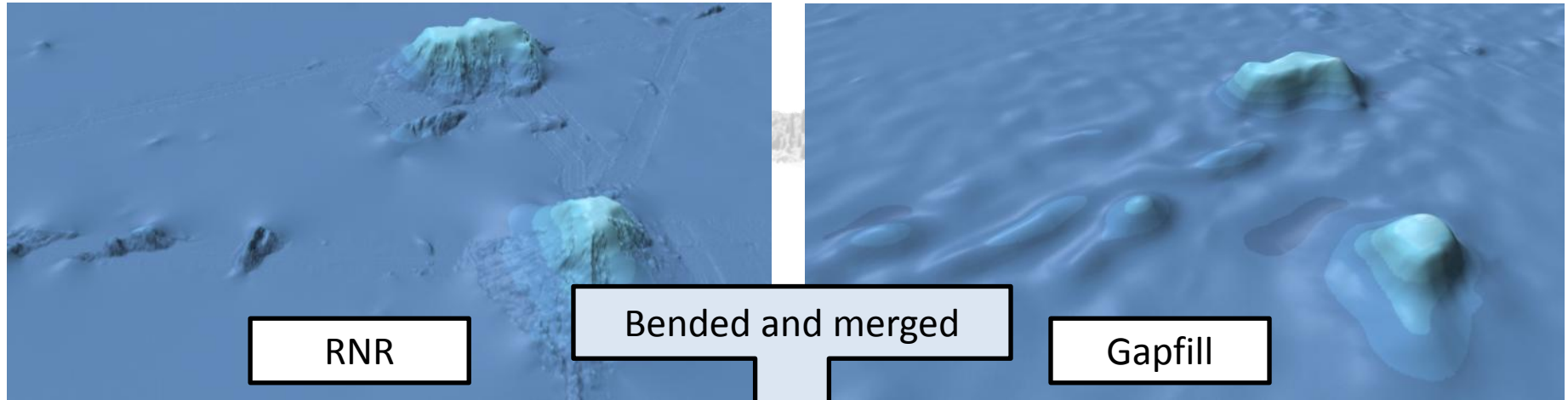


Bended and merged

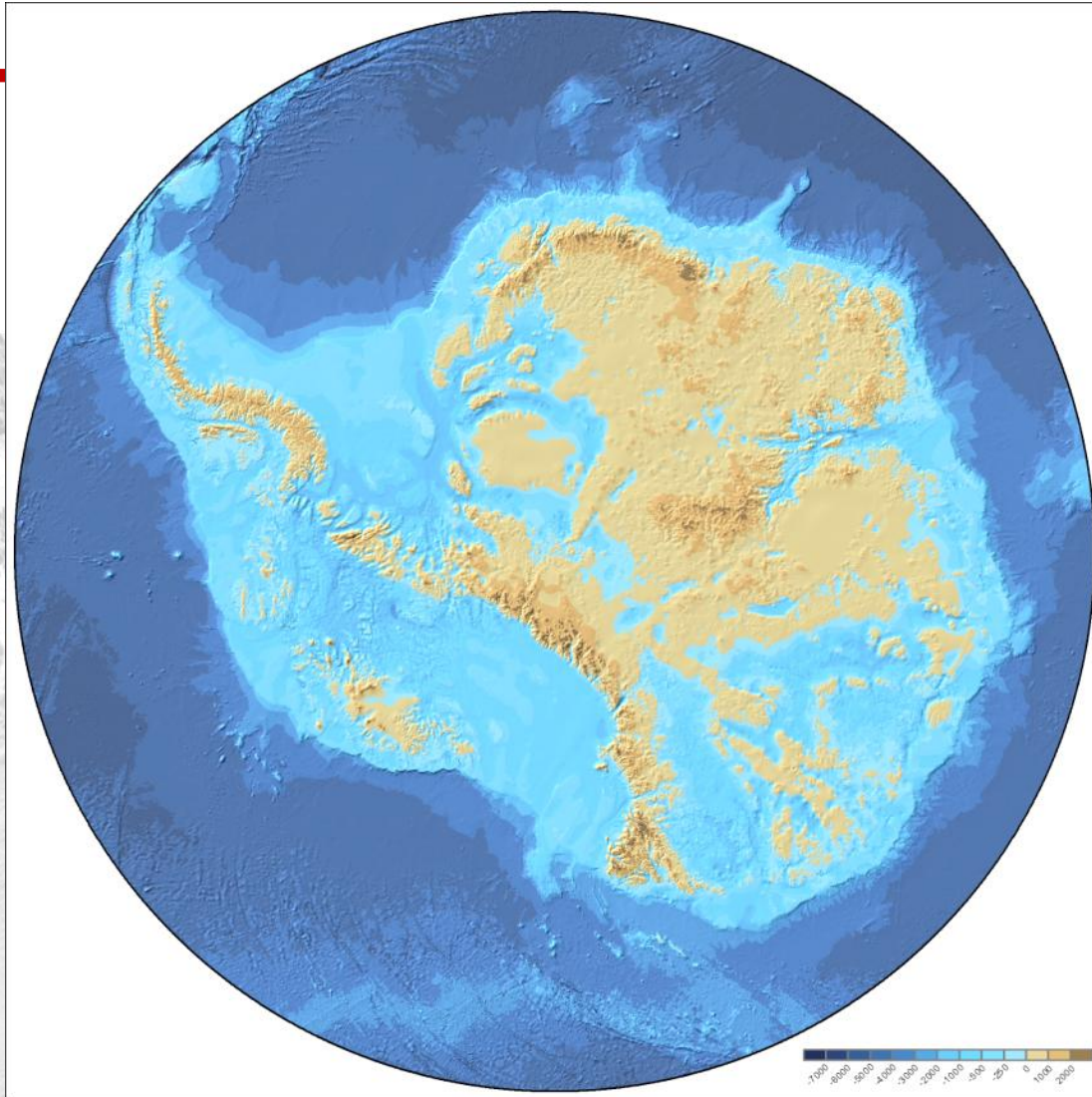


RNR

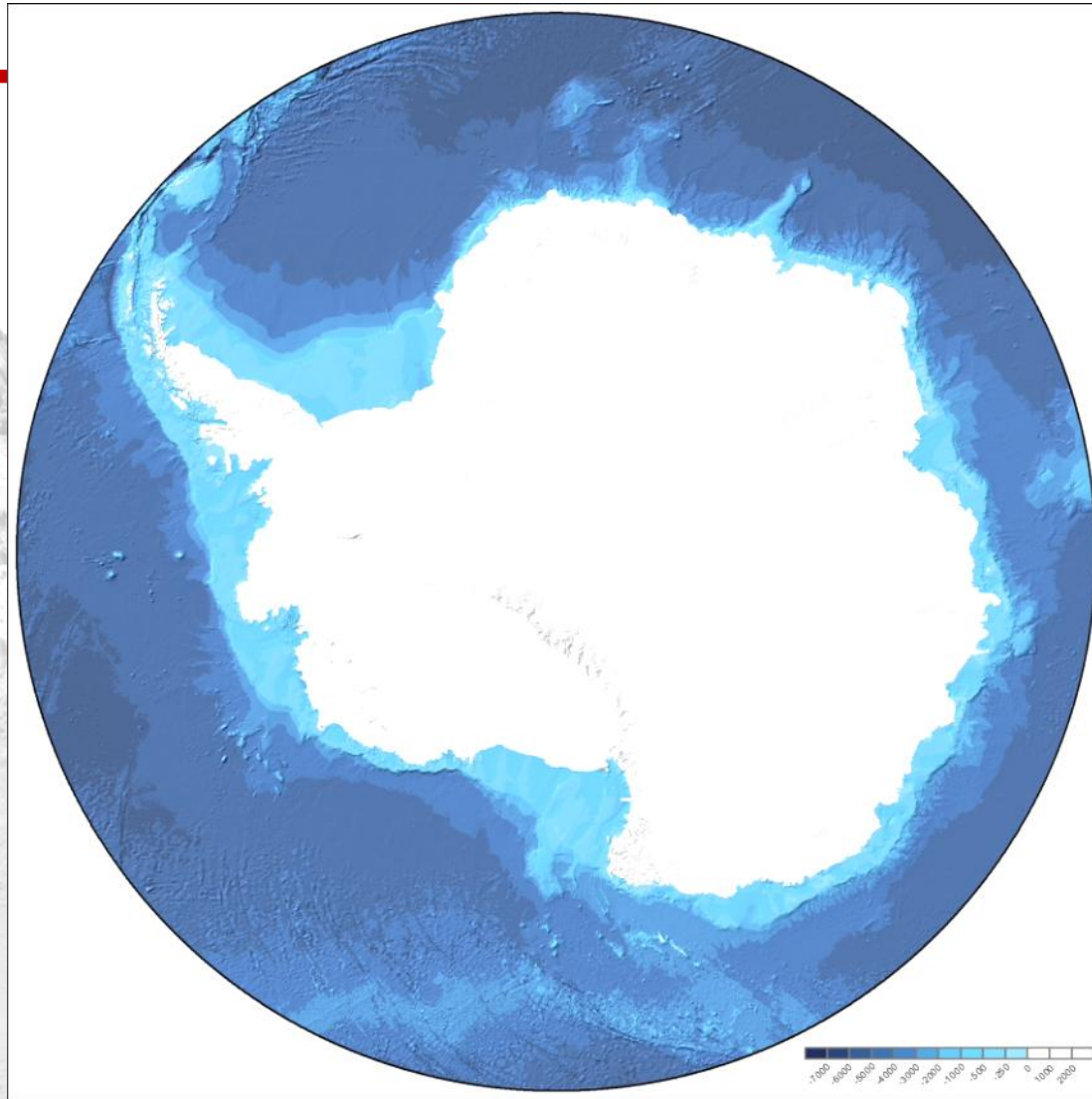
Gridding (gap-fill)



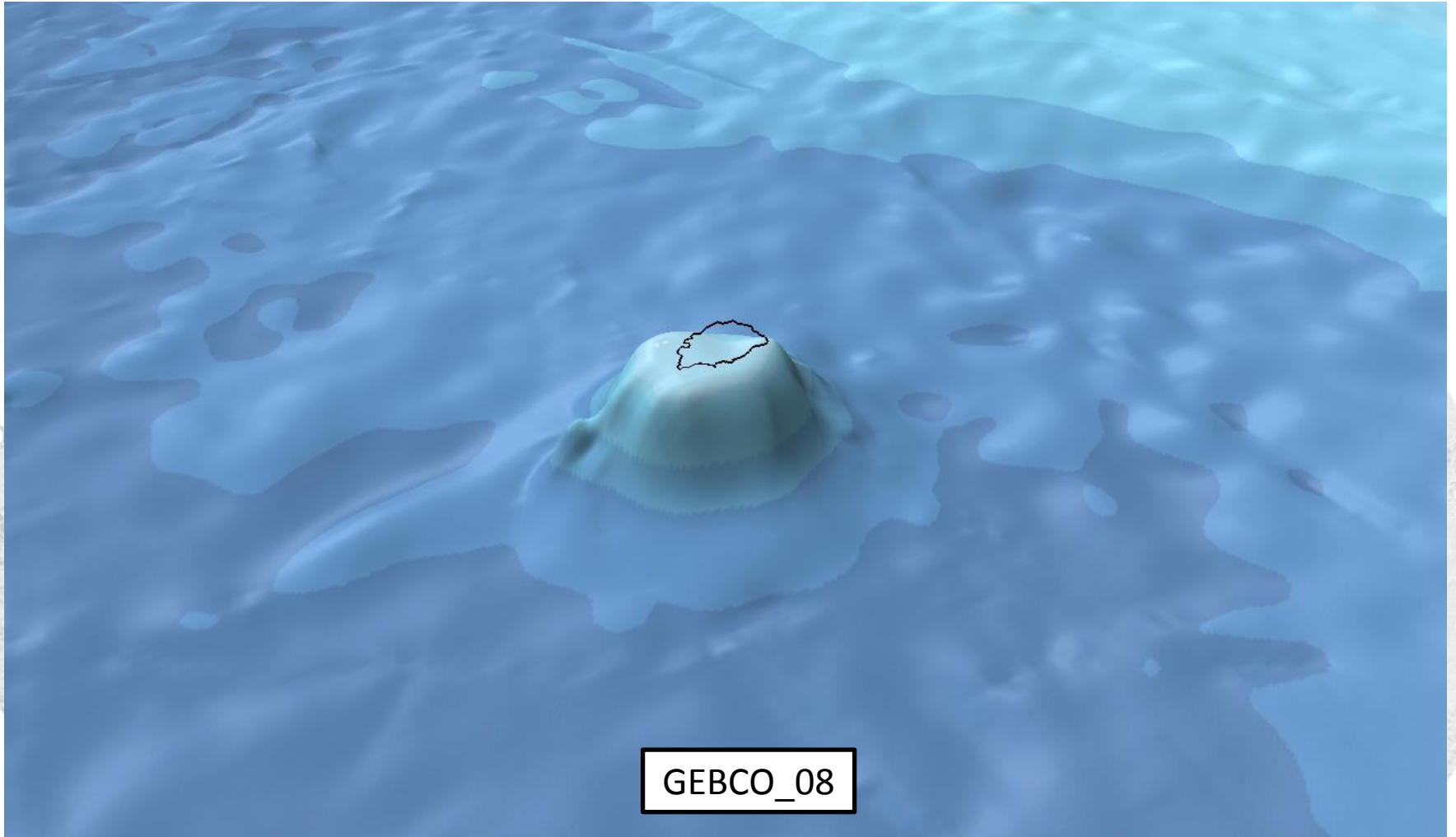
IBCSO Version 1.0



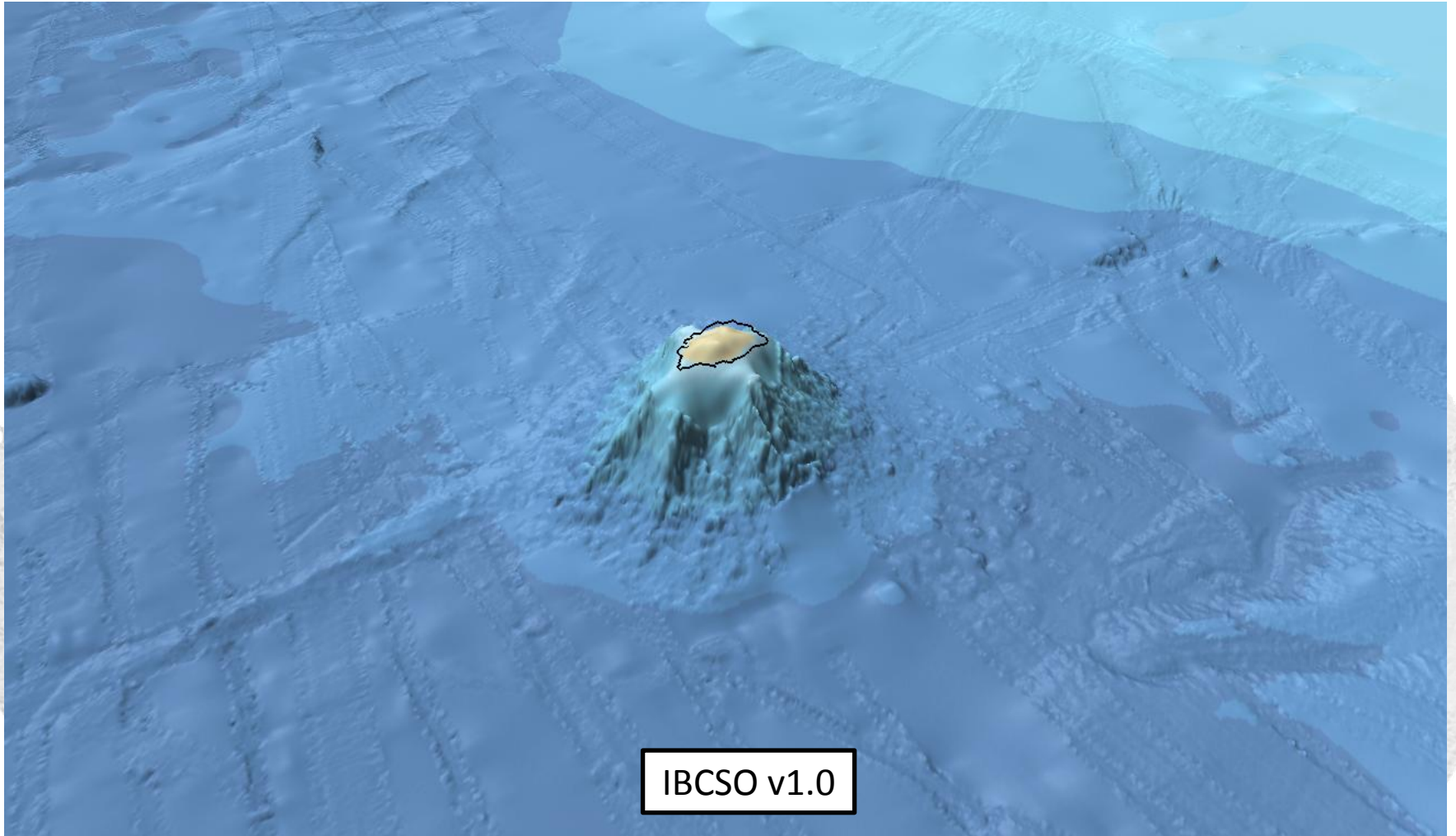
IBCSO Version 1.0



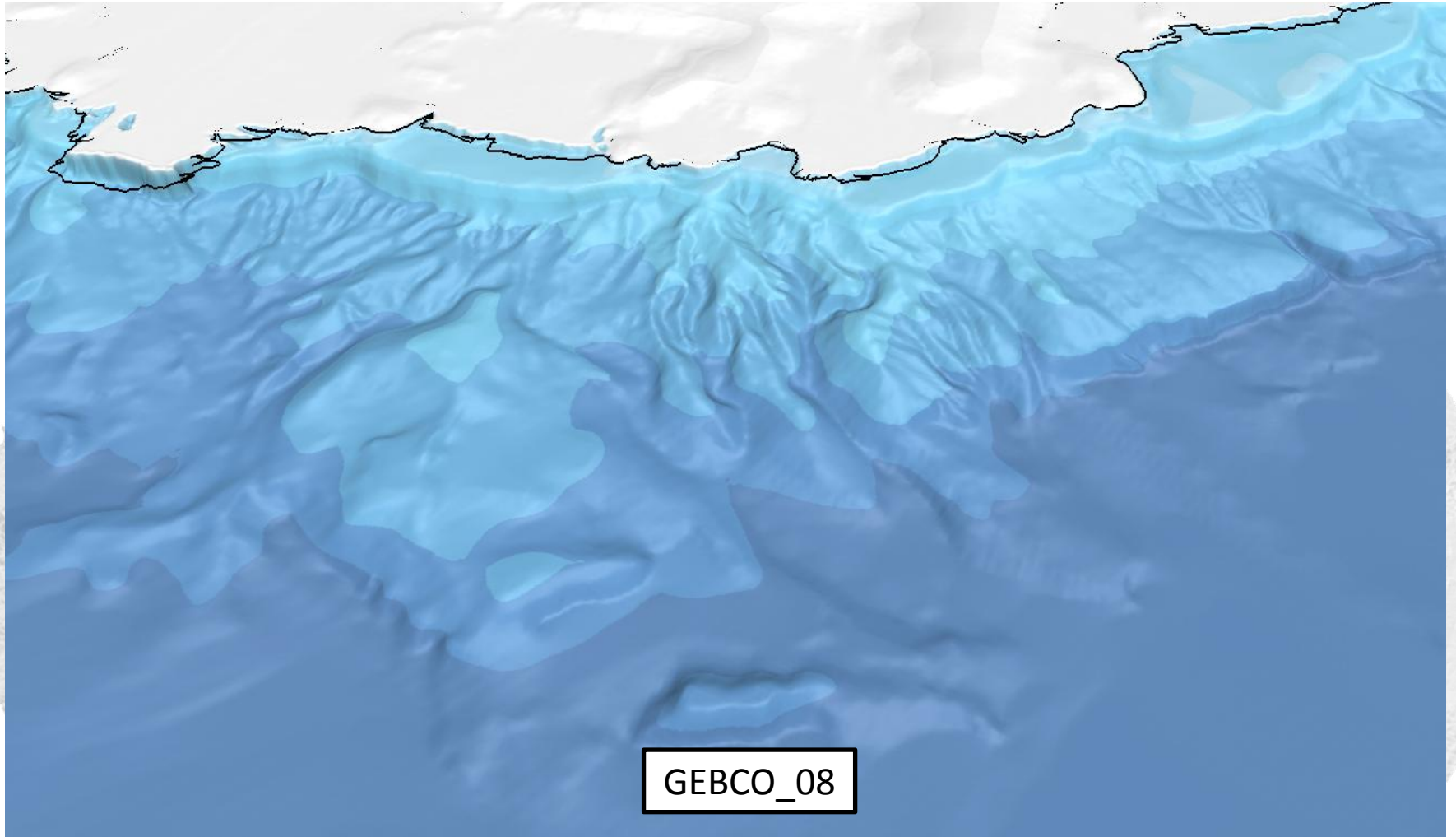
Comparison to GEBCO_08



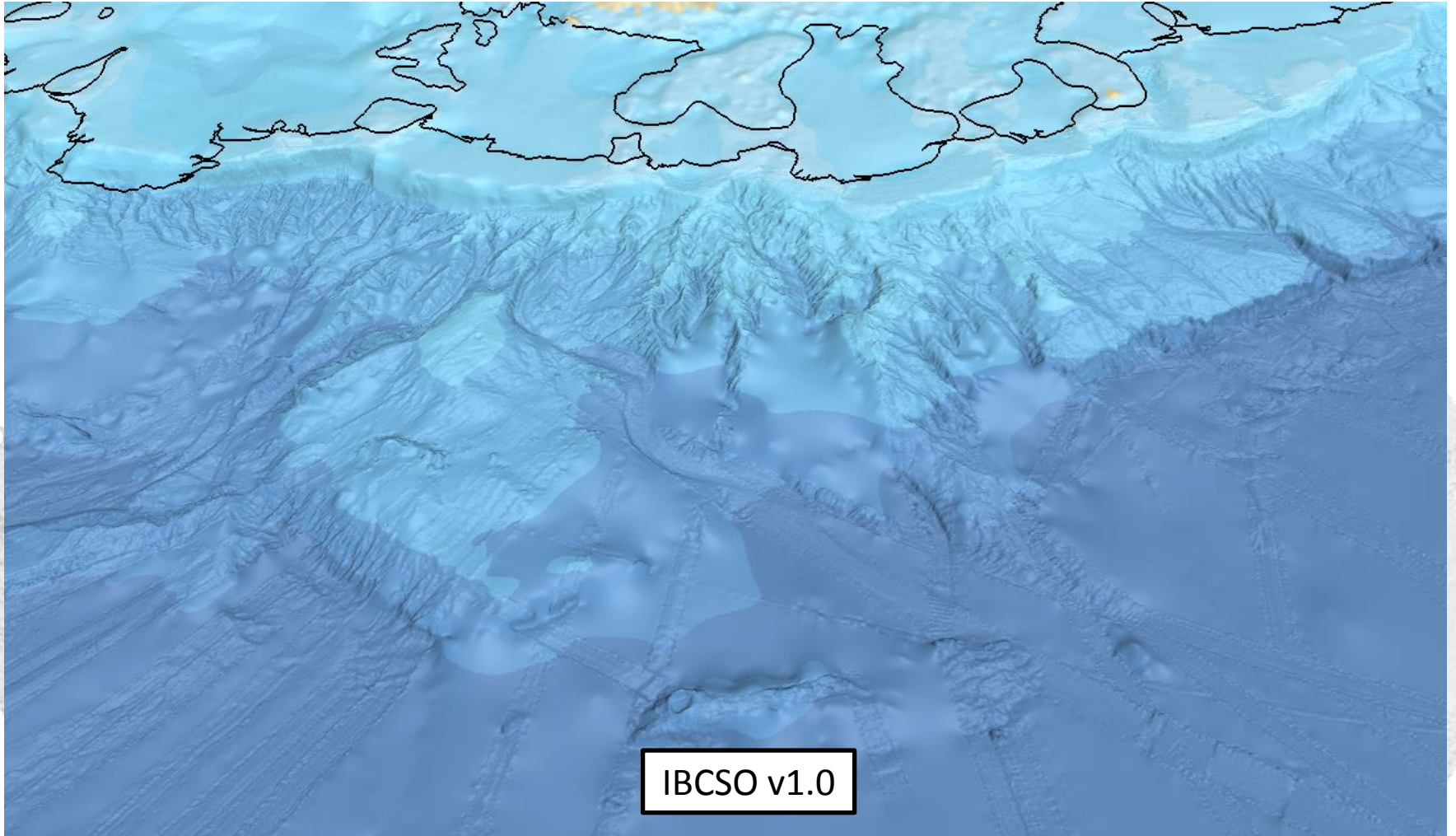
Comparison to GEBCO_08



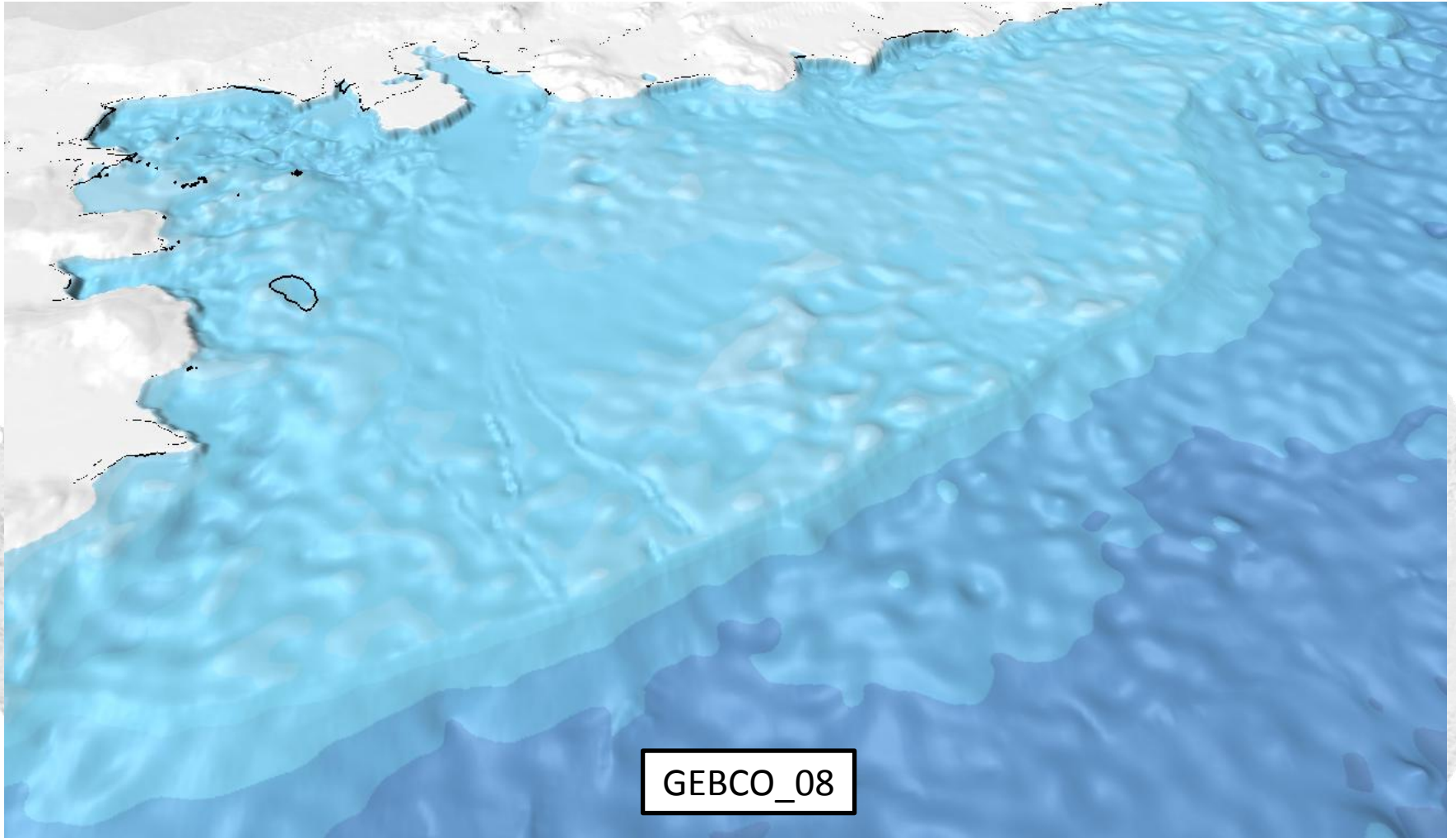
Comparison to GEBCO_08



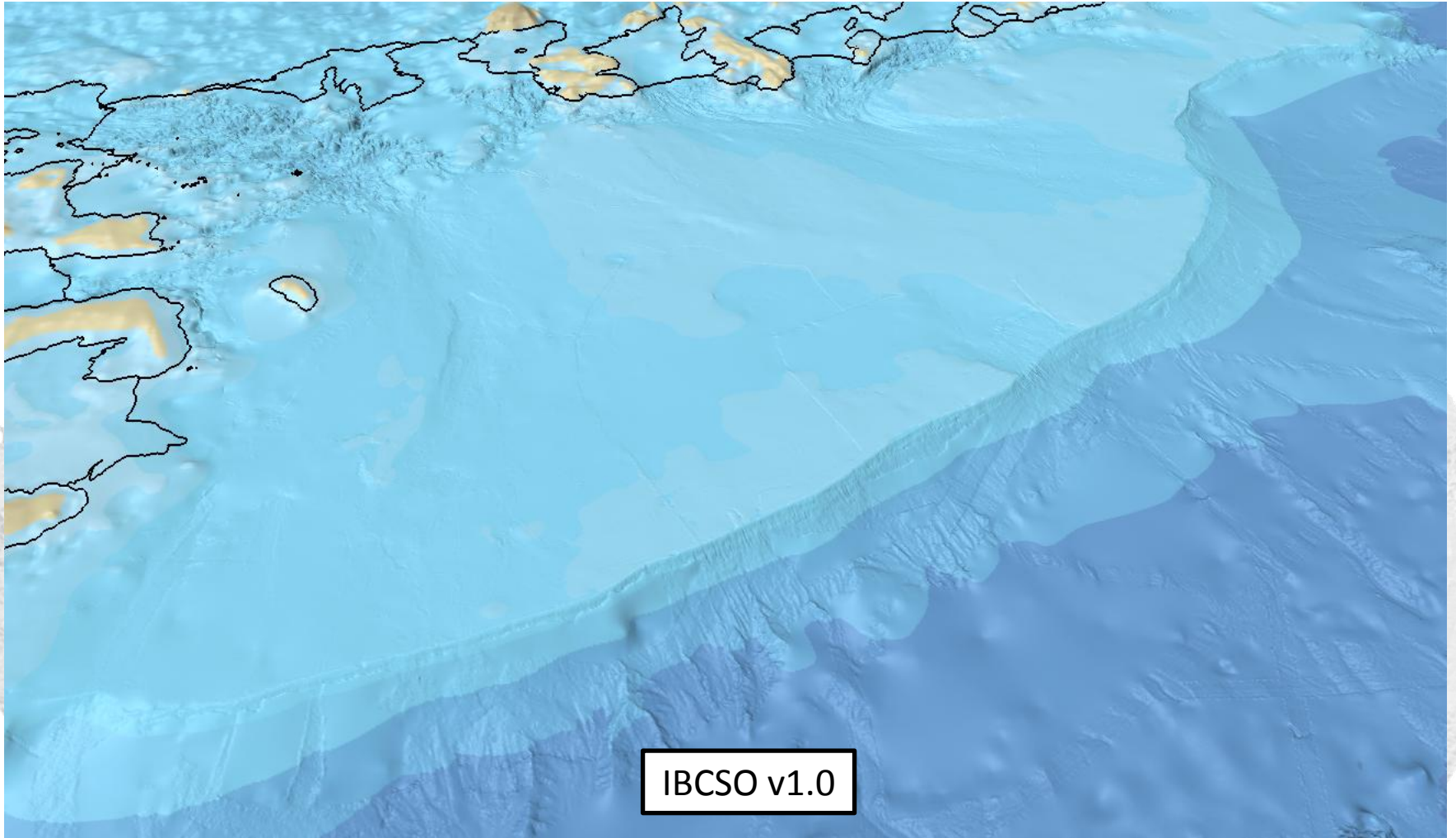
Comparison to GEBCO_08



Comparison to GEBCO_08



Comparison to GEBCO_08



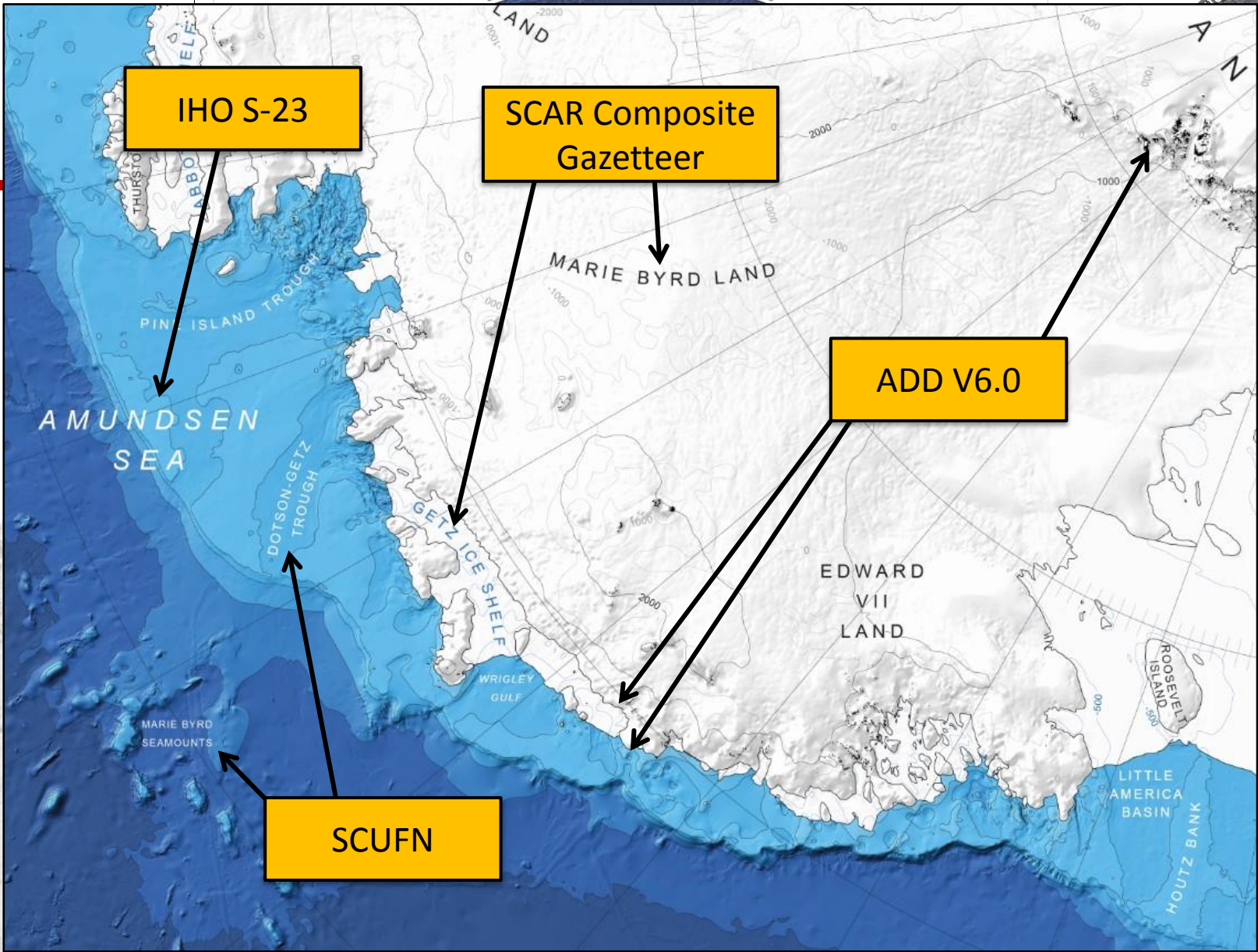
Data retrieval

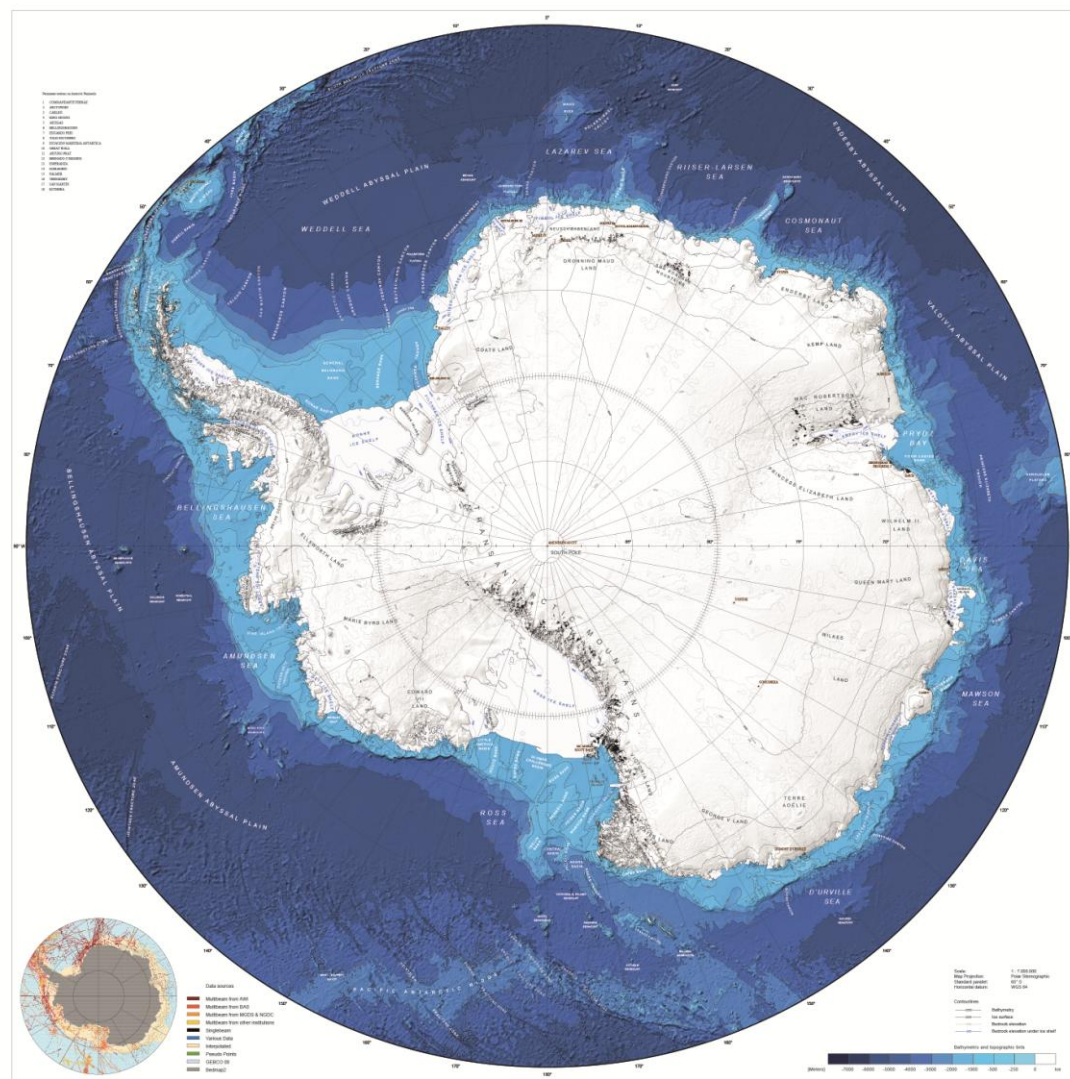
www.ibcso.org -> Data

www.pangaea.de -> IBCSO

Available Data Versions	
Projections	Polar stereographic with truescale 65°S Polar stereographic with truescale 71°S Geographic WGS84
Resolution	500 x 500 m 1 x 1 min
Dataformats	GeoTiff (ArcGIS) NetCDF (GMT) SD (Eledormaus)

Arndt et al. (2013) *Geophys. Res. Lett.*





THE INTERNATIONAL BATHYMETRIC CHART OF THE SOUTHERN OCEAN (IBCSO)

Chart Information: This chart is a bathymetric chart of the Southern Ocean, showing the bathymetry of the Southern Ocean and the continent of Antarctica. The chart is based on data from the International Bathymetric Chart of the Southern Ocean (IBCSO) project, which is a joint effort of the International Hydrographic Organization (IHO) and the International Oceanographic Commission (IOC). The chart is based on data from the IBCSO project, which is a joint effort of the International Hydrographic Organization (IHO) and the International Oceanographic Commission (IOC). The chart is based on data from the IBCSO project, which is a joint effort of the International Hydrographic Organization (IHO) and the International Oceanographic Commission (IOC).

Chart Generation: The chart is based on data from the IBCSO project, which is a joint effort of the International Hydrographic Organization (IHO) and the International Oceanographic Commission (IOC). The chart is based on data from the IBCSO project, which is a joint effort of the International Hydrographic Organization (IHO) and the International Oceanographic Commission (IOC).

Chart Users: The chart is based on data from the IBCSO project, which is a joint effort of the International Hydrographic Organization (IHO) and the International Oceanographic Commission (IOC). The chart is based on data from the IBCSO project, which is a joint effort of the International Hydrographic Organization (IHO) and the International Oceanographic Commission (IOC).

Chart Information: The chart is based on data from the IBCSO project, which is a joint effort of the International Hydrographic Organization (IHO) and the International Oceanographic Commission (IOC). The chart is based on data from the IBCSO project, which is a joint effort of the International Hydrographic Organization (IHO) and the International Oceanographic Commission (IOC).

Chart Generation: The chart is based on data from the IBCSO project, which is a joint effort of the International Hydrographic Organization (IHO) and the International Oceanographic Commission (IOC). The chart is based on data from the IBCSO project, which is a joint effort of the International Hydrographic Organization (IHO) and the International Oceanographic Commission (IOC).

Chart Users: The chart is based on data from the IBCSO project, which is a joint effort of the International Hydrographic Organization (IHO) and the International Oceanographic Commission (IOC). The chart is based on data from the IBCSO project, which is a joint effort of the International Hydrographic Organization (IHO) and the International Oceanographic Commission (IOC).





Thank you for your attention!

- For further information please visit www.ibcso.org
- or contact Jan.Erik.Arndt@awi.de