



HCA13-08.5.1Af

Hydrographic Commission on Antarctica
National Report by
France (SHOM)





Hydrographic Commission on Antarctica
National Report by
France (SHOM)

- ❖ Surveys: Crowd-Sourcing experimentations
- ❖ Charting progress in Antarctica
- ❖ Activities Planned for 2014
- ❖ Relevant information

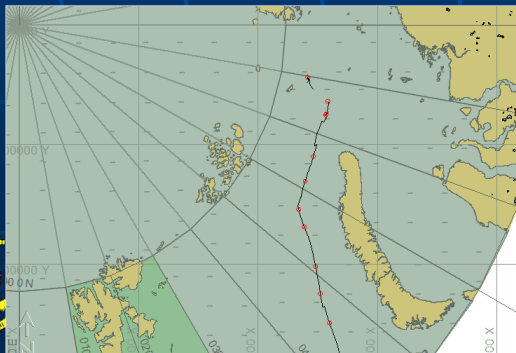
Crowd-sourcing experimentations

Target: Sounding acquisition during the Arctic expedition with the single beam echo sounder fitted



SHOM provides a Compact Turn-Key System:

- Methodology,
- Hydrographic software,
- Specific user manual,
- Rugged computer,
- Technical support.



Objective:

Test trusted crowd-sourcing and the capacities of use a semi-autonomous Hydrographic system during several months, on a not well known seabed.

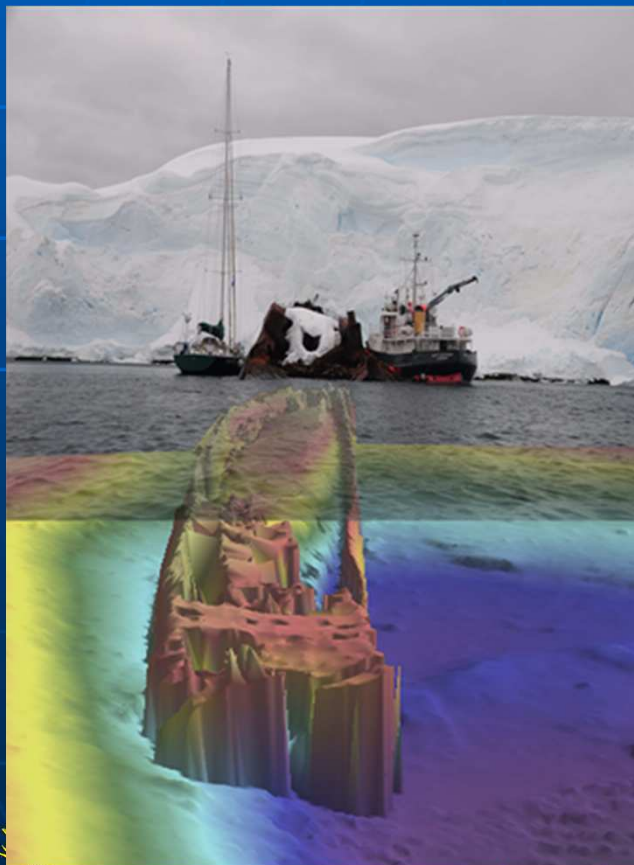
Crowd-sourcing experimentations

<http://www.tv.reson.com/video/8153079/hydrography-in-antarctica-on-sailboat>

Initiative by Xplore Expeditions (IAATO)

Reliability of MBES survey + sailing ship + Antarctica ?

➤ **Cat. B Hydro provided by SHOM**



→ 34 hours over 7 days of actual surveys,

→ 15 square nautical miles of S-44 compliant data (1b to 2 order)

Crowd-sourcing experimentations

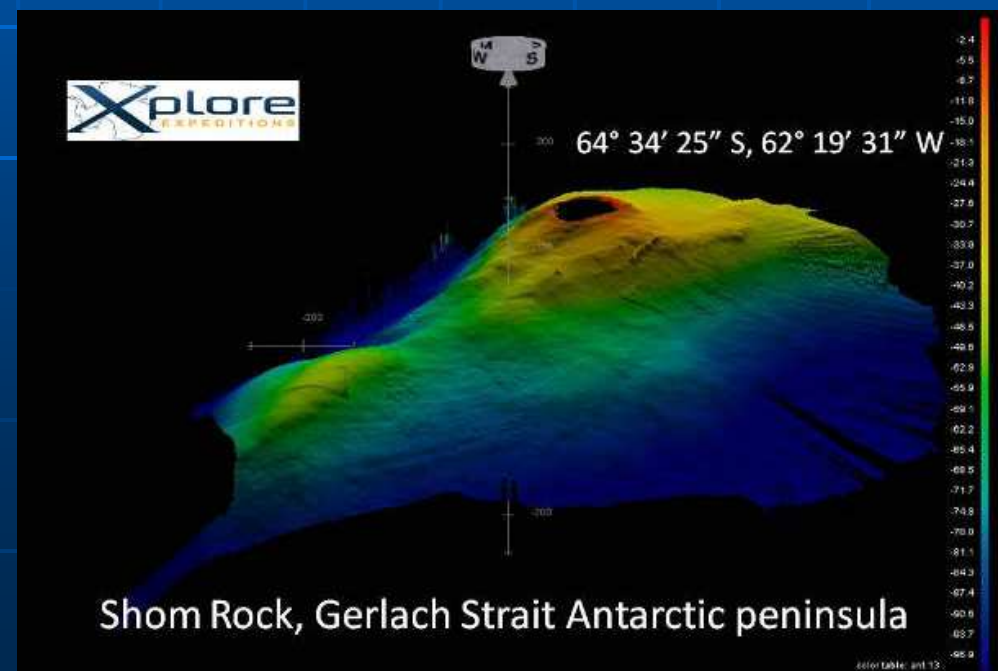


Only 6 months after...

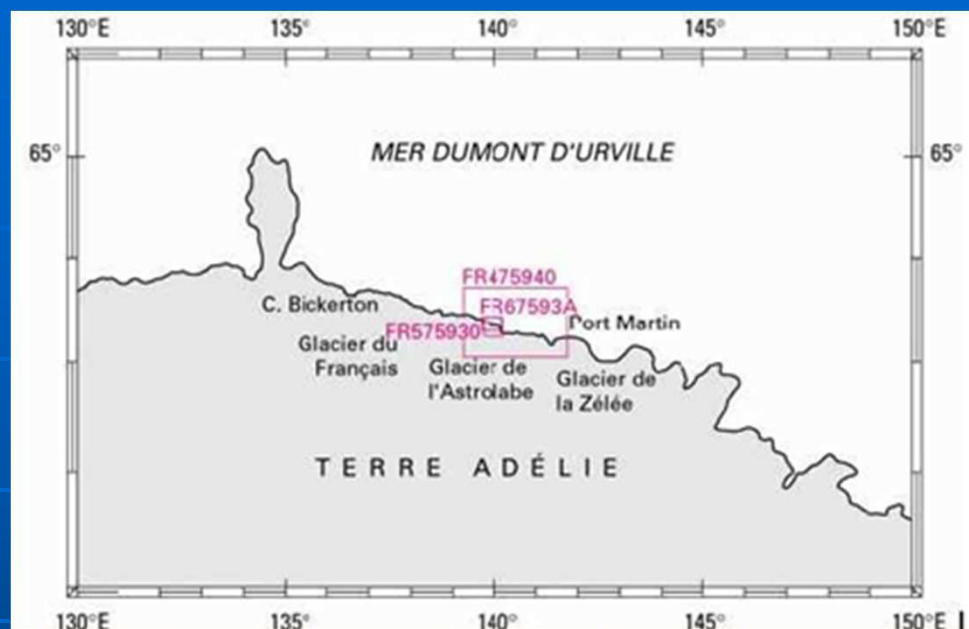
- WHD: Survey data handed over to HCA
- 7 Crafty charts as « aids to navigation »
- Expected Chart update by AR, CL, UK

MSI information

PA Rock in the Gerlach Strait,
Officially named « SHOM Rock »
Pointed on UK charts 3566 & 3570



Charting progress in Antarctica



New ENC	Scale 1:	Title
FR475940	100 000	De la pointe Ebba au cap de la Découverte
FR575930	20 000	De l'île Hélène au Rocher du Débarquement - Archipel de Pointe Géologie
FR67593A	7 500	Archipel de Pointe Géologie

→ Planned cells to be precised in 2015-2018 production scheme.



Planned activities for 2013/14



Dumont D'Urville Tide Gauge Station

- Installed in 1997
- Part of ROSAME network
- Operated by LEGOS

01/2012: full reinstallation including new sensors (Oxygen, PAR and Fluo).

01/2013: data transmission aborted due to some cable problem.

2014: Intervention to fix data transmission and data download.



SHOM's Maritime webportal: data.shom.fr

SHOM *L'océan à la carte*

DATA.SHOM.FR
Information géographique maritime et littorale de référence

Actualités | Aide | FR | EN
[Remonter une information](#)

Navigation
Affichage
Données
Abonné

Catalogue

- Levés bathymétriques au Multifaisceau
- Levés bathymétriques au Plomb
- MNT Golfe de Gascogne Manche - 1 km
- MNT Golfe de Gascogne Manche - 500 m
- MNT littoral HISTOLITT®

Catalogue des ENC
100 %

Carte sédimentaire mondiale
61 %

TERRE ADELIE
GEORGE

Maritime & coastal geographic information portal, INSPIRE compliant.

→ 2 additional services:

infonaut.data.shom.fr, cartodyn.data.shom.fr.

→ More information:

<http://www.shom.fr/les-services-en-ligne/portail-datashomfr/>



A scenic landscape featuring a bright sun or starburst in a dark sky, reflected in a body of water. The foreground shows snow-covered rocks and a calm water surface. The text "Thank you" and "Muchas gracias" is overlaid in yellow.

Thank you
Muchas gracias