



HCA13-08.5.1Ak

Hydrographic Commission on Antarctica

**National Report by
New Zealand**

Survey and charting progress in Antarctica since last meeting

- ✦ No new hydrographic surveys performed by LINZ in Antarctica since HCA12
- ✦ 12 ENC's to be published by end December

New Zealand – Ross Dependency			
Chart No.	Title	ENC Cell	Schedule
NZ 14065 (INT 65)	Ross Sea to New Zealand - East	*NZ14065E	10/2011
	Ross Sea to New Zealand - West	*NZ14065W	10/2011
NZ 14900 (INT 900)	Ross Sea - East	NZ21490E	05/2012
	Ross Sea - West	NZ21490W	05/2012
NZ 14901 (INT 9001)	Cape Royds to Pram Point	NZ414901	Q4 2013
NZ 14902 (INT 9002)	McMurdo Station and Scott Base	NZ514902	Q4 2013
NZ 14903 (INT 9003)	Approaches to Scott Island: Scott Island	NZ414903	Q4 2013
	Scott Island	NZ514903	Q4 2013
NZ 14906 (INT 9006)	Cape Adare	NZ414961 TBC	Q4 2013
	Cape Hallett	NZ414962 TBC	Q4 2013
	Ridley Beach	NZ514961 TBC	Q4 2013
	SeeBee Hook	NZ514962 TBC	Q4 2013
NZ 14907 (INT 9007)	Possession Islands	NZ414907	Q4 2013
NZ 14908 (INT 9008)	Cape Adare to Cape Daniell	NZ314908	Q4 2013
NZ 14909 (INT 9009)	Cape Hooker to Coulman Island	NZ314909	Q4 2013
NZ 14912 (INT 9012)	Balleny Islands	NZ314912	Q4 2013
	Balleny Seamount		

*NZ14065E and NZ14065W replace GB14065E and GB14065W.



Planned activities for 2013/14

- ✦ NZ currently has no planned activities for 2014
- ✦ Investigating collaboration opportunities with RNZN, CRIs (NIWA), IAATO
- ✦ Interest in Crowd Source data
- ✦ Risk Assessment for NZ Area of responsibility, incl. Ross Dependency – beyond 2013/14 TBC



Any other matters of relevance to HCA

✦ NZGB Protocol for Undersea Feature Naming

- 'There is significant benefit to be gained from mutual consultation by all interested parties in preparing and submitting proposals to SCUFN. The SCUFN encourages all national naming authorities to consult on undersea feature names in their mutual areas of interest prior to submitting proposals to SCUFN'
- Protocol to be presented at ATCM May 2014 & SC-AGI, September 2014

✦ SWP Hydrography Risk Assessment

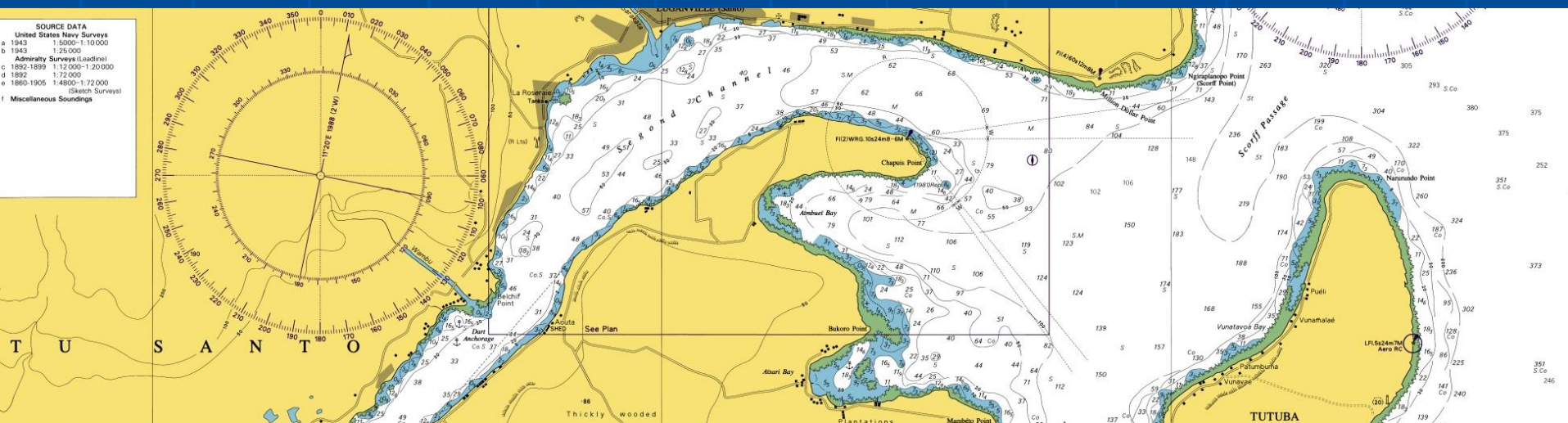
✦ HNote smartphone app launched July 2013

- Android & Apple
- Not just for NZ, concept is international



SWP Hydrography Risk Assessment - Background

- ✦ Maritime safety a major concern in the South West Pacific for a number of years
- ✦ December 2011 LINZ & MFAT signed MOU, to improve navigational & maritime safety in SWP region
- ✦ Overarching goal: achieve accurate & adequate charting coverage in SWP



SWP Hydrography Risk Assessment - Background

- ✦ Hydrographic services, including accurate and adequate navigational charts, form a corner-stone of maritime safety and are a critical enabler of other maritime activities
- ✦ Pacific Island Countries have been historically reliant on other nations to assist with their hydrographic services
- ✦ Due to low prioritisation of this work, overtime the underlying data has become increasingly obsolete
- ✦ Vessels are increasing in size and frequency of visits



Key deliverables

- ✦ A complete set of ENC's for Tonga, Samoa, Cook Islands, Niue & Tokelau for the NZ area of charting coverage
- ✦ An enduring Hydrography Risk Assessment Framework
- ✦ Methodology published and available from IHO website
http://iho.int/mtg_docs/CB/CBA/SWPHC-Risk_Assessment.htm.



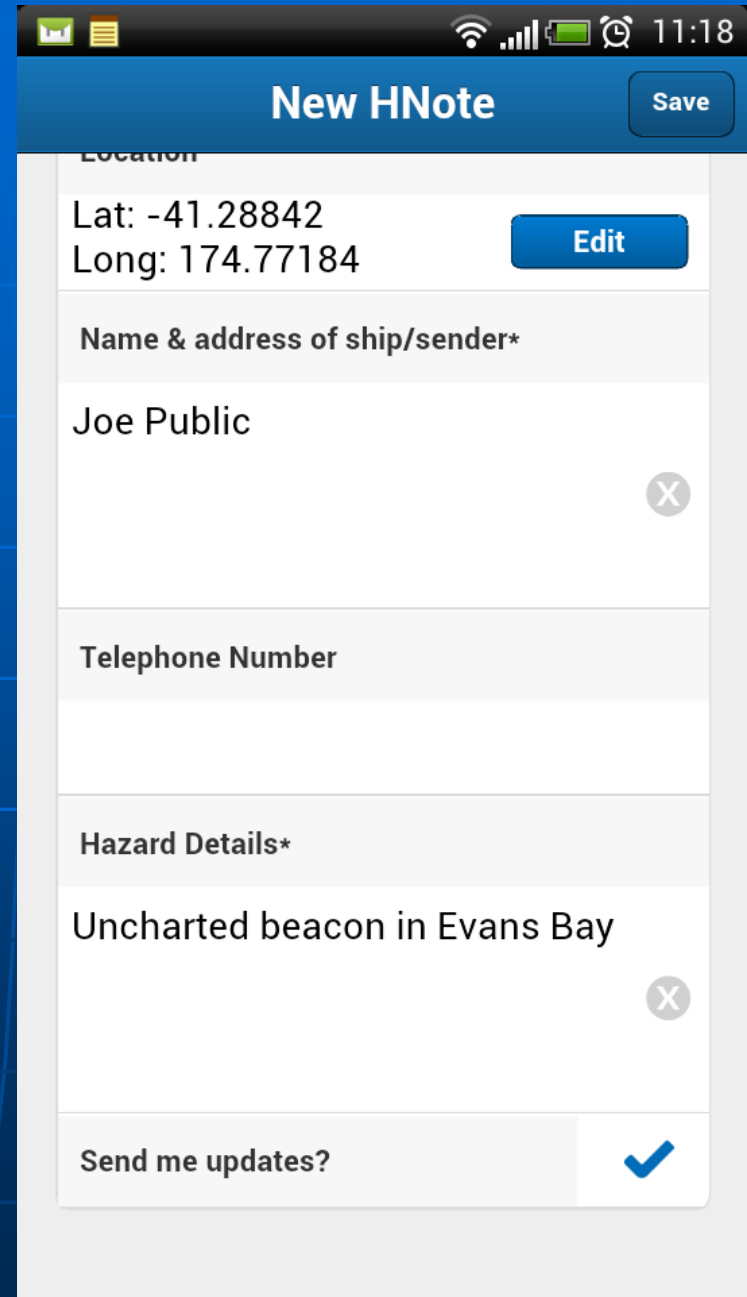
Activities completed

- ✦ Prototype Hydrography Risk Assessment Methodology developed
- ✦ Vanuatu pilot study (proof on concept)
 - In-country data gathering
 - S-AIS & domestic traffic analysis
 - Maritime Economic analysis
 - GIS Risk Assessment
 - Vanuatu Hydrography Risk Assessment results published
- ✦ Final Hydrography Risk Assessment Methodology published



HNote Mobile App

- List of existing HNotes
- About the App
- Create a new HNote
 - Select a category
- Acquire a location
- Enter your details



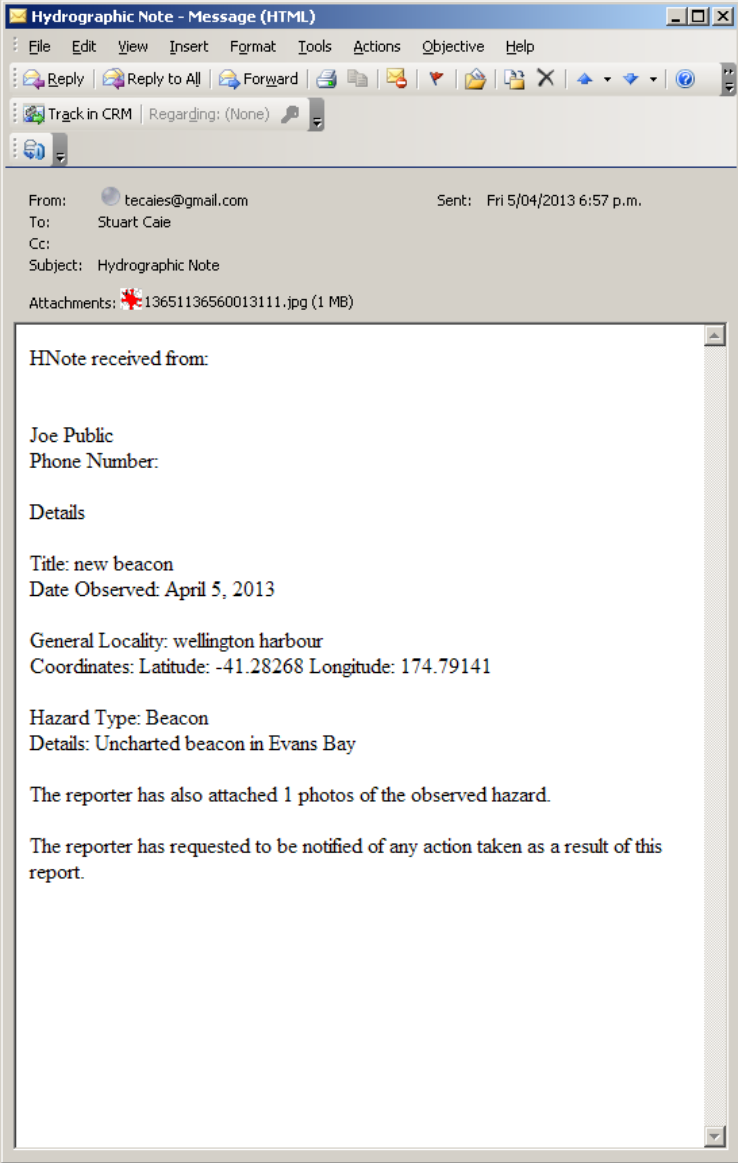
The screenshot shows the 'New HNote' form in a mobile application. The form is titled 'New HNote' and has a 'Save' button in the top right corner. The form fields are as follows:

- Location:** Lat: -41.28842, Long: 174.77184. There is an 'Edit' button next to the coordinates.
- Name & address of ship/sender*:** Joe Public. There is an 'X' button to the right of the text.
- Telephone Number:** (Empty field)
- Hazard Details*:** Uncharted beacon in Evans Bay. There is an 'X' button to the right of the text.
- Send me updates?:** (Checked checkbox with a blue checkmark).



HNote Mobile App

- Edit location
 - manual / re-acquire
- View on a map
- Move 'target'
- Location updates to 'target'
- Add photo's (5 max)
 - camera / album
- Send email
 - change / add addresses



Hydrographic Note - Message (HTML)

File Edit View Insert Format Tools Actions Objective Help

Reply Reply to All Forward

Track in CRM Regarding: (None)

From: tecaies@gmail.com Sent: Fri 5/04/2013 6:57 p.m.
To: Stuart Caie
Cc:
Subject: Hydrographic Note

Attachments: 13651136560013111.jpg (1 MB)

HNote received from:

Joe Public
Phone Number:
Details:
Title: new beacon
Date Observed: April 5, 2013
General Locality: wellington harbour
Coordinates: Latitude: -41.28268 Longitude: 174.79141
Hazard Type: Beacon
Details: Uncharted beacon in Evans Bay

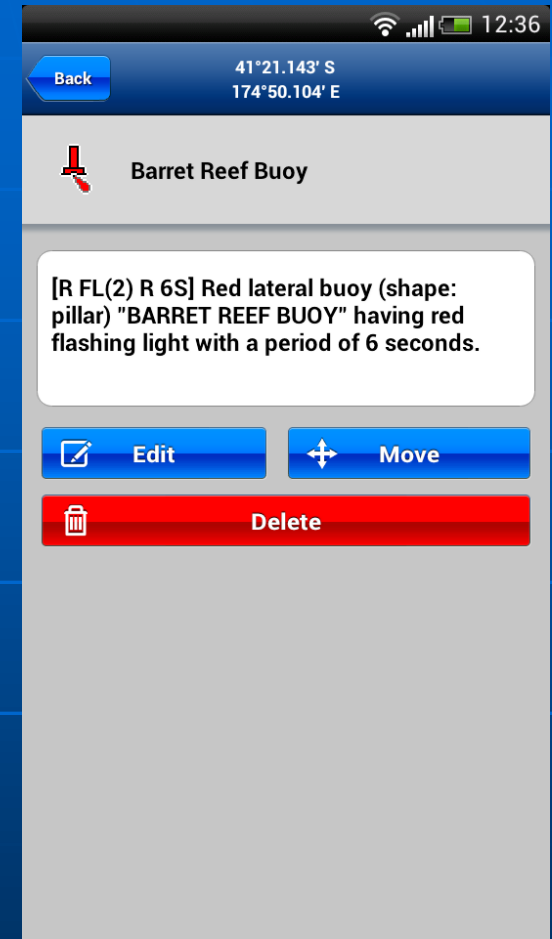
The reporter has also attached 1 photos of the observed hazard.

The reporter has requested to be notified of any action taken as a result of this report.



Future developments

- Vector charts
 - query objects, use position, include attributes
- Download charts & store locally
- Photo's viewing direction from compass



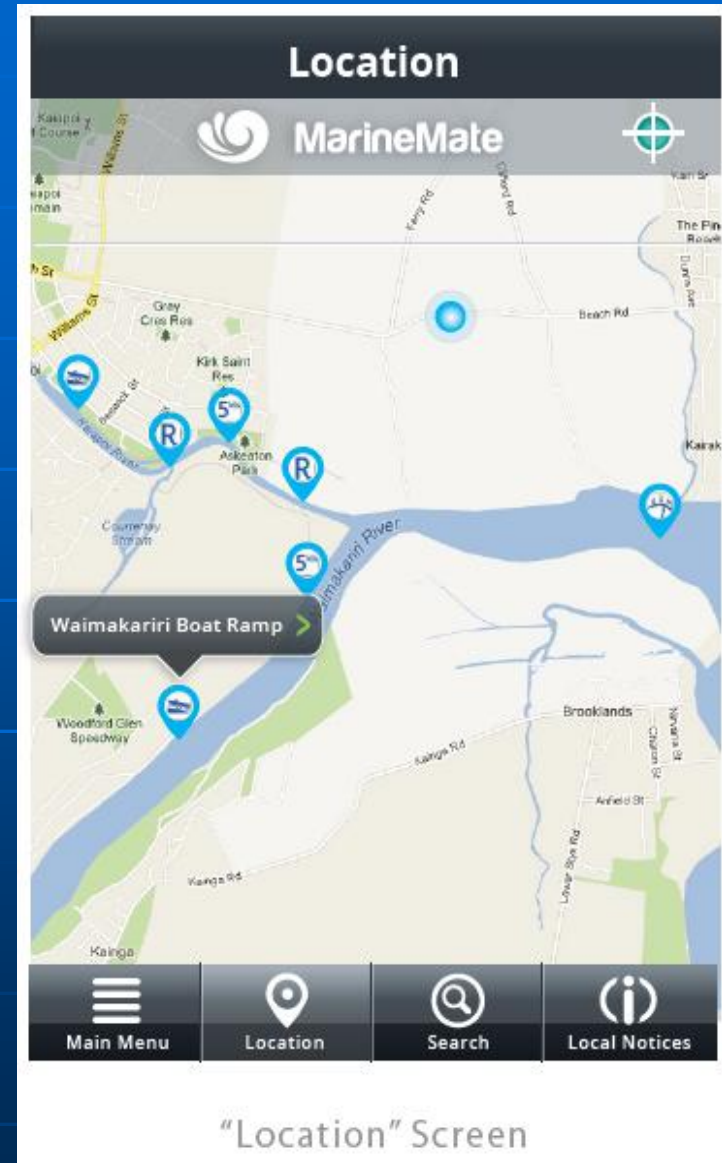
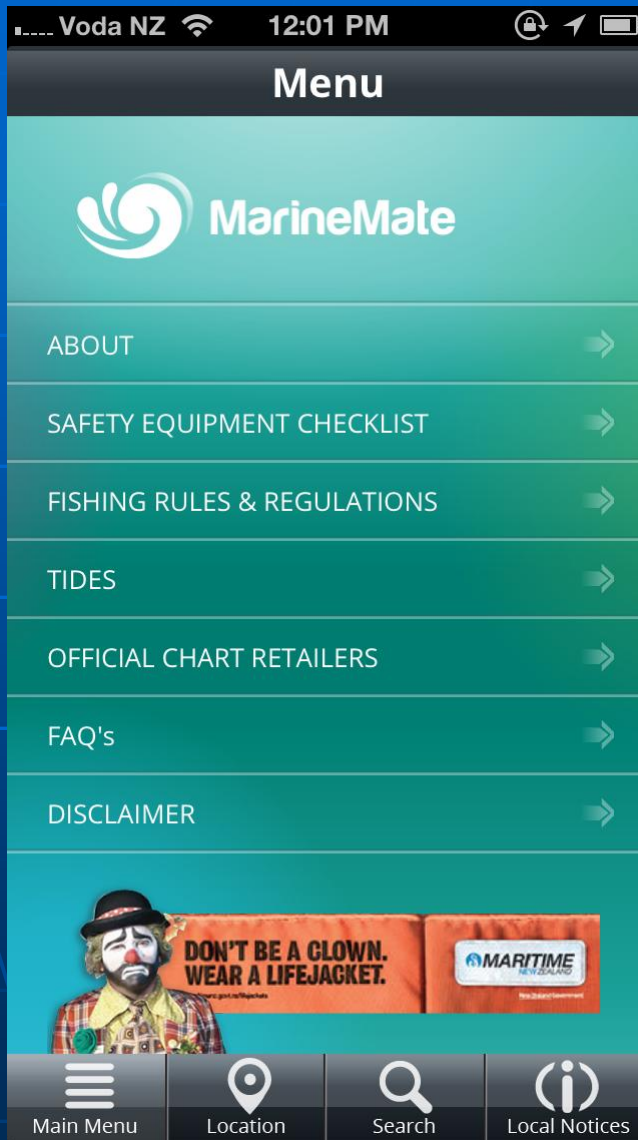
MarineMate



- Concept created by Waikato Regional Council
- Funded in conjunction with Maritime New Zealand & LINZ
- Platforms: Android & Apple
- Launch: November 2013



MarineMate



Notices to Mariners

Voda NZ 9:07 PM

Local Notices

Latest Notice

Date: Thursday 25 October

Message for Awakino River users. There is a new speed limit around the inlet area of 5kms/hour. For more info see our website

Old Notices:

Date: Thursday 20 September
Pod of Dolphins reported 2km off the east coast >> [Read More](#)

Date: Friday 10 August
Local fishing competition open to all the public >> [Read More](#)

Date: Friday 3 August
High winds and a bitter south west change expected this afternoon >> [Read More](#)

Date: Friday 13 July
Information about illegal activity in the area. >> [Read More](#)

Date: Monday 2 July
Message for Awakino River users. There is a new speed limit around the >> [Read More](#)

Main Menu Location Search Local Notices

Notice Details

Title: Scientific Instrument

Date: Thursday 25th October

Area: NZ 215(P)/12 NEW ZEALAND – North Island – East Coast – Napier Roads – Northwards –

Details:

1. A scientific monitoring buoy Fl(5)Y.20s, has been permanently deployed in position: 39° 23'.13S., 176° 56'.97E.
2. Mariners are requested to exercise caution when navigating in the area.
3. Charting action will take place in due course.

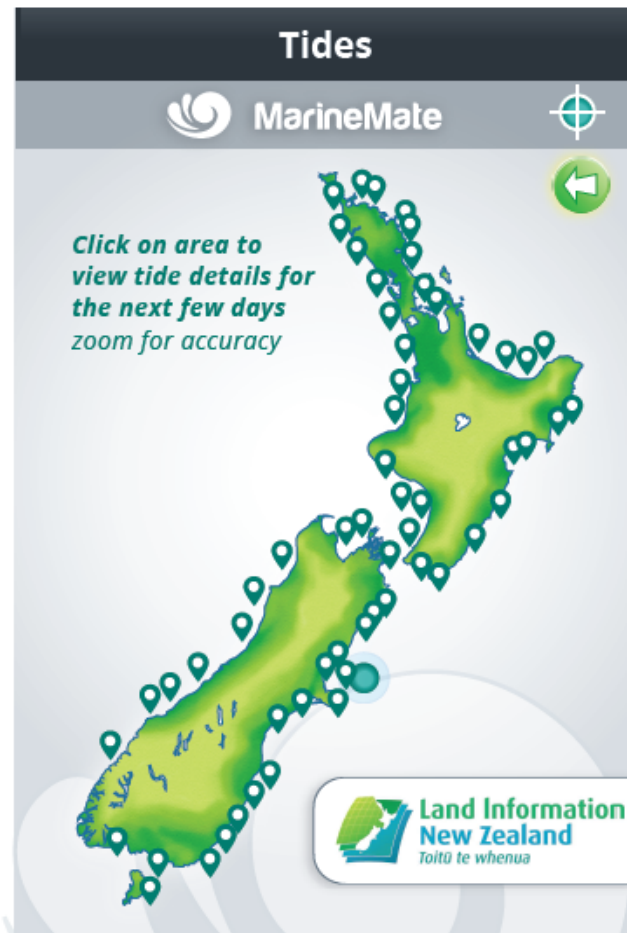
Charts Affected:
NZ 56, NZ 561, NZ 5612,
NZ300056, NZ400561, NZ505612

Issued by:
Hawke's Bay
Regional Council,
NI 260/2012

Main Menu Location Search Local Notices



Tides



"Tides" Screen



Akaroa Tides					
	High	Low	High	Low	High
11 Jan Friday	03:40 2.5m	09:59 0.7m	16:01 2.4m	22:20 0.6m	-
12 Jan Saturday	04:37 2.5m	10:55 0.7m	16:59 2.4m	23:17 0.6m	-
13 Jan Sunday	05:32 2.5m	11:51 0.7m	17:56 2.4m	-	-
14 Jan Monday	-	00:13 0.6m	06:27 2.5m	12:44 0.6m	18:52 2.4
15 Jan Tuesday	-	01:06 0.6m	07:21 2.5m	13:37 0.6m	19:48 2.3
16 Jan Wed	-	01:59 0.7m	08:14 2.4m	14:30 0.6m	20:41 2.3

"Tide Details" Screen





Hydrographic Commission on Antarctica

Gracias