



Hydrographic Commission on Antarctica

National Report by

CHINA

Survey and charting progress in Antarctica since last meeting (December 2013)

- ✦ new charts produced (INT, national, ENC)

No new charts published.

- ✦ areas surveyed

12Km² .

- ✦ risk assessment studies

No studies.

- ✦ impact of Polar Code on your activities

No impact.

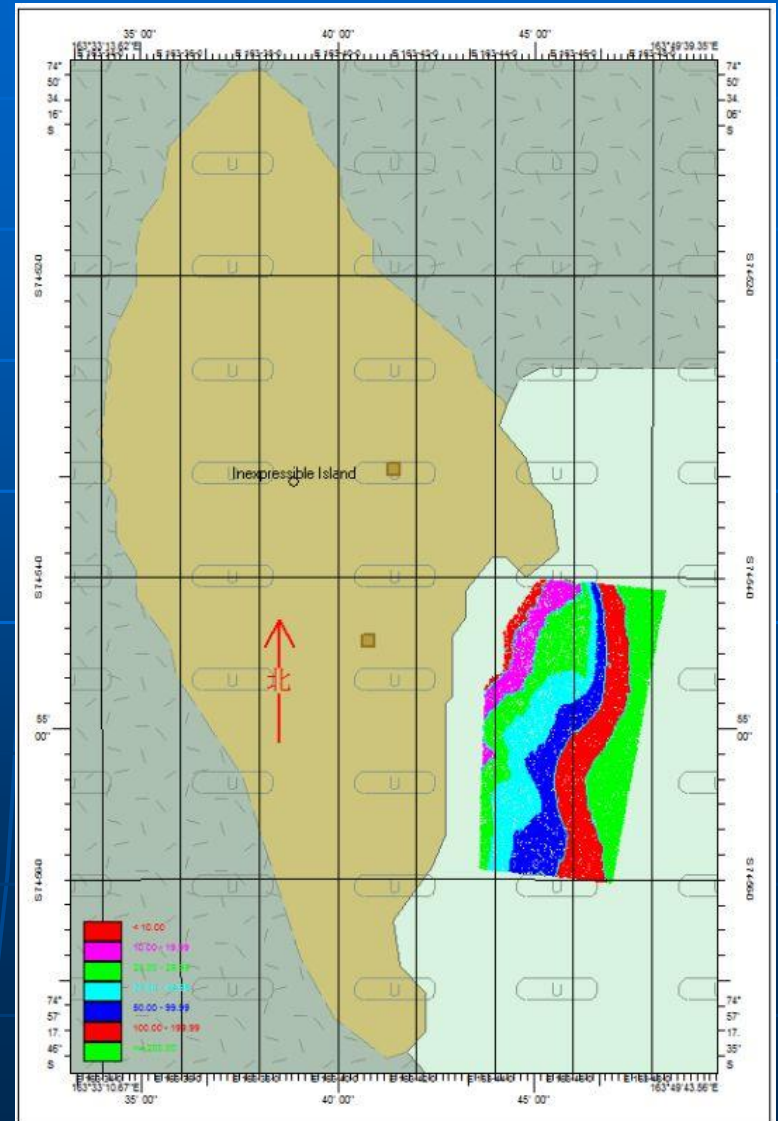


Survey and charting progress in Antarctica since last meeting (December 2013)

✦ areas surveyed

Totally 12^{km}2

nearby waters Eastern of Inexpressible island and Victoria Land.



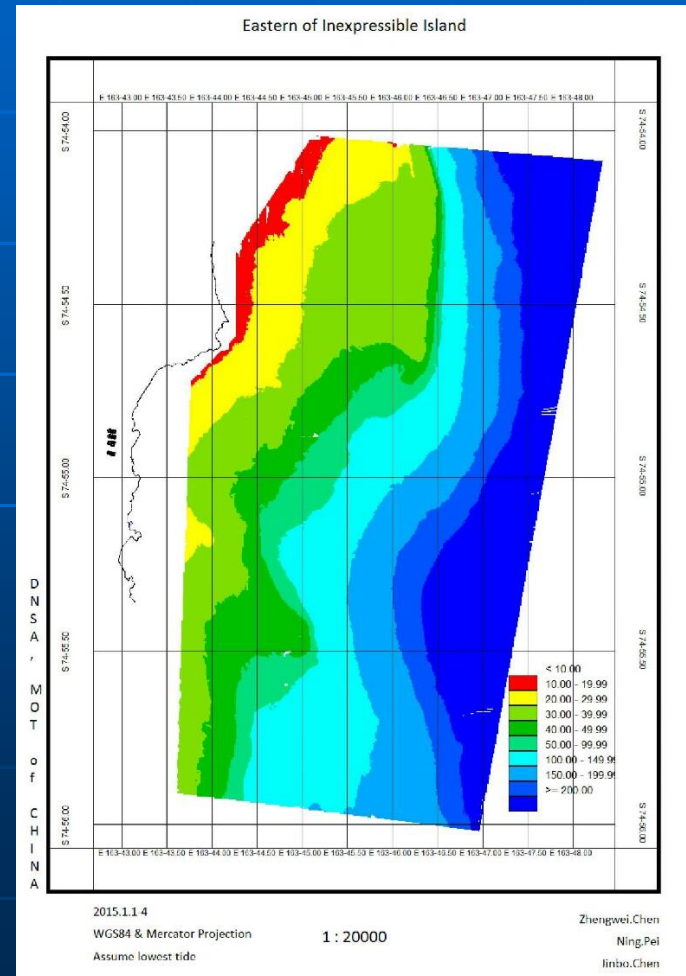
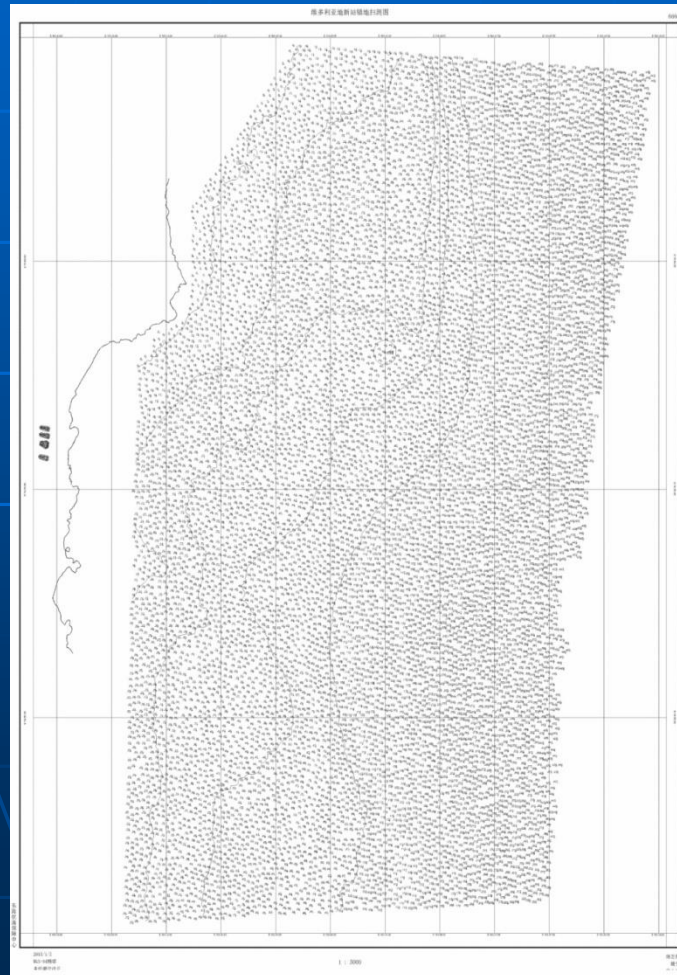
Survey and charting progress in Antarctica since last meeting (December 2013)

✦ areas surveyed



Survey and charting progress in Antarctica since last meeting (December 2013)

✦ areas surveyed



Survey and charting progress in Antarctica since last meeting (December 2013)

✦ areas surveyed

➤ Find an anchorage for scientific research ship.

➤ About 1.19^{km²}.

➤ Coordinates of this area

A: 74° 54'45"S, 163° 44'30"E

B: 74° 54'45"S, 163° 46'00"E

C: 74° 55'40"S, 163° 46'00"E

D: 74° 55'40"S, 163° 44'30"E



Survey and charting progress in Antarctica since last meeting (December 2013)

✦ areas surveyed

The depth are 30 to 50 meters there

The underwater terrain is relatively flat.

Temporarily named "Zhenghe".



Survey and charting progress in Antarctica since last meeting (December 2013)

✦ areas surveyed



Survey and charting progress in Antarctica since last meeting (December 2013)

✦ areas surveyed



Survey and charting progress in Antarctica since last meeting (December 2013)

✦ areas surveyed



Status of Relations with Other Organizations

- ✦ scientific and polar institutes
- Navigation Guarantee Center of East China Sea (NGCE) of China Maritime Safety Administration
- Polar Research Institute of China



中国极地研究中心
Polar Research Institute of China



Status of Relations with Other Organizations

- ✦ cruise vessels

Chinese ice-breaker, "XueLong" Ship.

Small dingey, "HaiXun 166-01"



Planned Activities for 2016-17

✦new surveys

According to the arrangement of the State Oceanic Administration, We plan to survey Adjacent sea area of ZHONGSHAN and GREAT WALL Station.



Particular Issues that may require HCA Consideration :

- ✦ Take note of this report.
- ✦ China is intend to provide hydrographic information to INT chart and ENC.

