

REPUBLIC OF KOREA

KOREA HYDROGRAPHIC AND OCEANOGRAPHIC  
AGENCY

NATIONAL REPORT

TO THE

IHO HYDROGRAPHIC COMMISSION ON ANTARCTICA (HCA)

14<sup>TH</sup> MEETING, TROMSØ, NORWAY, 28 - 30 JUNE 2016

## 1. Korea Hydrographic and Oceanographic Agency (KHOA)

KHOA ([www.khoa.go.kr](http://www.khoa.go.kr)) is a governmental organization under the Ministry of Oceans and Fisheries which carries out hydrographic survey and oceanographic observation in the Korean waters. It also produces nautical charts, publications, and other oceanographic data.

## 2. Surveys

2.1 KHOA did not carry out any survey activity within the HCA region.

2.2 Korea Polar Research Institute (KOPRI), a governmental supported research institute for polar region, has conducted swath bathymetric survey in HCA region. KOPRI operates an icebreaker, *Araon*, equipped with multibeam echosounder for swath bathymetry. In the austral summer of 2014-2016, multibeam data were collected in the Ross sea.

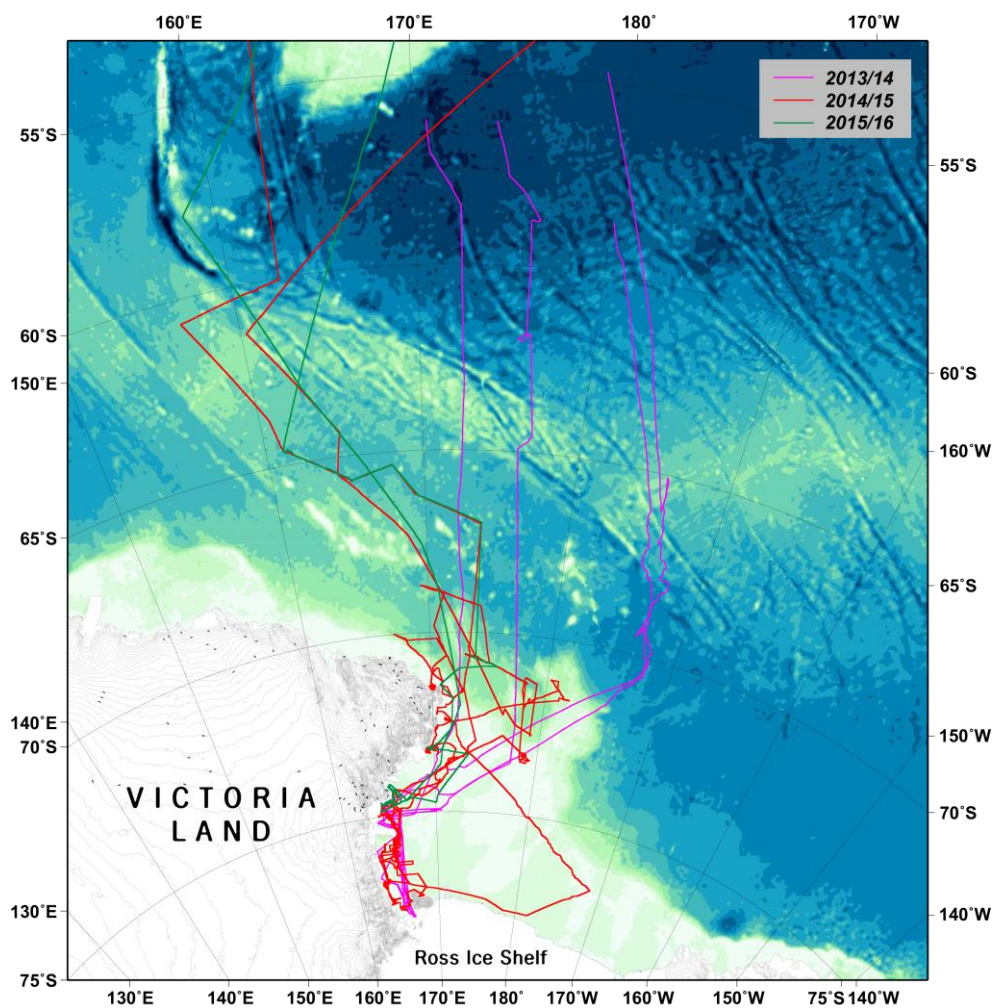


Fig. 1. Ship tracks on the Ross Sea surveyed in 2014-2016.

### 3. New Charts and Updates

From the beginning of 2016, KHOA launched a 5-year mapping program for the Ross Sea, Antarctica in 2016. The major purpose of the program is generating new charts around Jang Bogo research station, a Korean Antarctic station. In the region, KHOA already compiled a preliminary map using collected data by KOPRI (Fig.2). Because previous data were not collected based upon “IHO Standards for Hydrographic Surveys(S-44), new hydrographic survey and map production is required for the safe of navigation in this region.

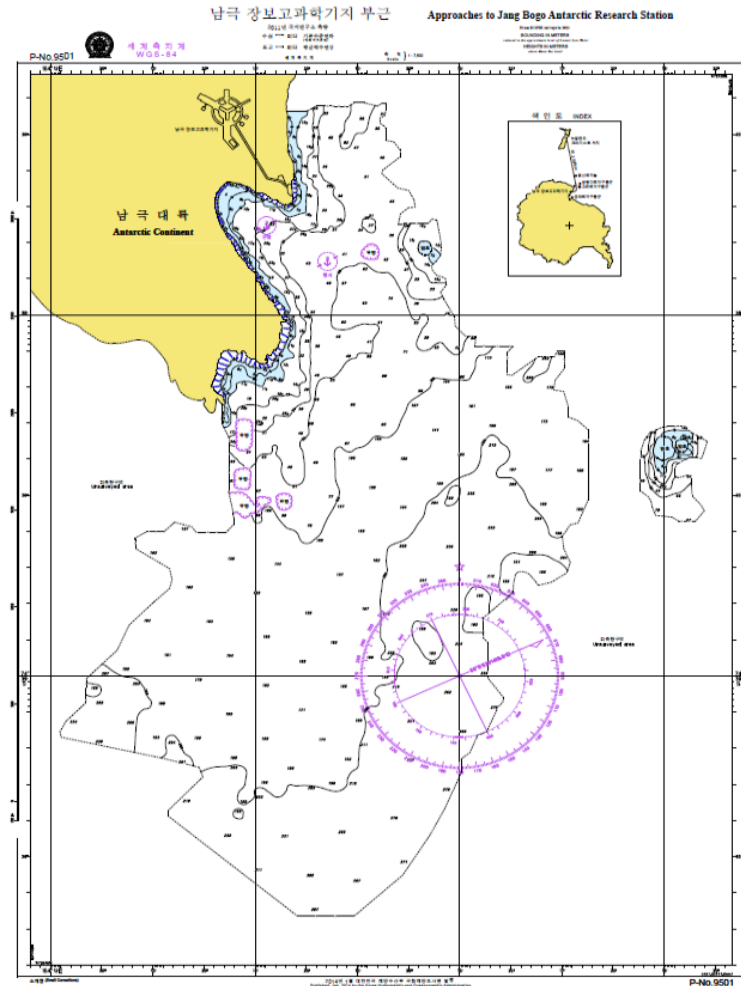


Fig.2 A preliminary navigation chart around Jang Bogo Station.

The program includes hydrographic and topographical survey and producing a new INT chart. Details of the program is as follows:

#### A. Hydrographic survey

The survey area is focused on the Korean station.

Table.1. Survey area

	Survey Area
> 200m from the Coast	3 km <sup>2</sup>
Depth < 100 m	19 km <sup>2</sup>
Depth > 100 m	17 km <sup>2</sup>

#### B. Topographical survey

The survey will be performed along the coast in the survey area and around Jang Bogo station. Fig.3. shows planned survey area including hydrographic and topographical survey.

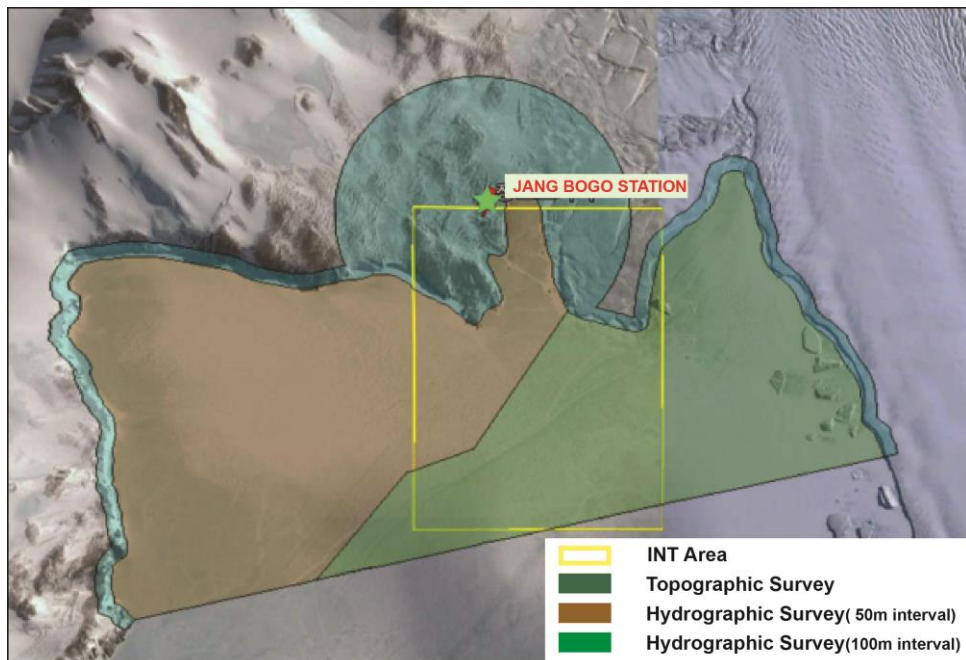


Fig. 3. Survey plan around Jang Bogo Station. Survey plan and INT area may be changeable depending on the field condition.

#### 4. New Publications

Nothing to remark

#### 5. Maritime Safety Information

Nothing to remark

#### 6. C-55

Nothing to remark

#### 7. Capacity Building

Nothing to remark

#### 8. Oceanographic Activities

In the austral summer of 2013/2014 and 2015/2016, *Araon* visited the Amundsen Sea. When she visited the Amundsen sea, scientific party conducted CTD casting, current measurement and mooring, sediment trap casting. In 2014/2015 season, *Araon* sailed on the Ross Sea. When she sailed the Ross Sea, swath bathymetric data as well as CTD data were collected.

#### 9. Other Activities

Nothing to remark